



# The Beauí

Newsletter of the Sarasota Shell Club

[www.Sarasotashellclub.com](http://www.Sarasotashellclub.com)

Meetings 2nd Thursdays, September-April at Fire Station #2, 2070 Waldemere St Sarasota.



## From the Prez

Welcome Back Shellers!

We are gearing up for another great year of shells and shelling! I hope to have a slew of wonder-ful trips for us this year including one to Matanzas pass on the east coast. We have three Carefree Learner trips already planned and one fossil trip. I would like to mention that I need help this year with the Beach and Breakfast trips. My responsibilities to my family have increased greatly and I just can-not do everything I'd like to do. Could someone please help me with these local trips?

Our first meeting is coming up Thursday, September 8, and the program will be *Show and Tell*, so pick out a few shells you picked up this past year and show 'em off! —Sally Peppitoni

**Next meeting**  
**Thursday, September 8**  
**at 7:00 pm.**

Refreshments are served at each meeting. Bring your own beverage!

Some members will have shells for sale at the meeting.

**Program: Show and Tell**

[www.Sarasotashellclub.com](http://www.Sarasotashellclub.com)

## This Month's Program

depends on you! It's Show and Tell... Bring some shells you got last year to show off. It doesn't matter if they're not perfect, just that you're glad you got them.

## Videos Online

**A Harp shell eating a crab that had just shed its shell:**

<https://www.facebook.com/fundivecn/videos/821817197944700/>

**Coral spawning:** [http://www.nytimes.com/2016/06/21/science/coral-reproduction-survival.html?](http://www.nytimes.com/2016/06/21/science/coral-reproduction-survival.html?em_pos=large&ref=headline&te=1&nl=science-times&emc=edit_sc_20160626)

[em\\_pos=large&ref=headline&te=1&nl=science-times&emc=edit\\_sc\\_20160626](http://www.nytimes.com/2016/06/21/science/coral-reproduction-survival.html?em_pos=large&ref=headline&te=1&nl=science-times&emc=edit_sc_20160626)

## IN MEMORIAM

Long time member Rachel Mann passed away during the summer. Her sunny smile will be missed.



## Field Trips, Etc

*Sally Peppitoni*

Trips must be paid for by check made out to Sarasota Shell Club. I will **always** send out an e-mail of pertinent information before

the trip goes.

**Dec. 16** – Carefree Learner, the boat will leave the dock about 8 am. Low tide is 9:04 am at -.6 ft.

**Jan. 12** – Carefree Learner, the boat will leave the dock about 6:15 am. Low tide is 7:12 am at -.8 ft.

**Jan. 27** – Carefree Learner, the boat will leave the dock about 6:15 am. Low tide is 7:15 am at -.6 ft.

**March 18** – Fossil trip, more info to come later.

More information about field trips will be available at the September meeting

## Historian

*by Duane Kauffmann*

### 50 Years Ago in Sept.



Thirty members and several guests attended the Sept. 8, 1966 meeting of the Sarasota Shell Club held at the Palmer National Bank Building. A balance of \$777.81 was in the Club treasury.

The Club program chair announced a full slate of programs for the coming meetings of the Club. It was announced that the practice of having a raffle at the meetings would be reinstated.

Harold Rathrum gave a presentation and then led a discussion of tides, shelling places, and collecting practices.

### 25 Years Ago

The regular September meeting of SSC was held at Mote Marine.

It was announced that judges for the shell show had been finalized: Walter Sage and Harry Lee for scientific and Esther Rossito and Virginia Hausted for artistic.

Programs for the monthly meetings were announced.

The sale of Helene Avellant's shell collection, which had been donated to the club, netted \$500.

Peggy Williams gave the program on "mollusk environments".

## COA 2016: Chicago

*by Duane Kauffmann*

The annual meeting of the Conchologists of America came to the Midwest in late July. For me it was only 3 hours from my home in Goshen, IN. Some one hundred and seventy members of COA attended the convention whose opening banquet was eaten in the shadow of Sue, the Field Museum's *Tyrannosaurus rex*. Among the more interesting presentations were those covering molluscs from deep sea vents, Caribbean land snails, and shells of Australia and New Zealand. The oral auction generated more than \$13,000 and the silent auctions were competitive as always. The bourse was its usual grand presentation.

The only collecting field trip occurred at the end of the convention. It entailed a 2-day trip west to the Rock and Mississippi Rivers. A few terrestrial collecting opportunities were also included. I was able to go on this trip with a group of 12 led by Stephanie Clark and Jochen Gerber. It was an educational experience with a variety of species collected (including a few micros!). Trip also included a stop at the Pearl Button Museum in Muscatine, Iowa.

Make note of the next COA: August 15-19 in Key West.

## TIME FOR MEMBERSHIP RENEWAL

Plan to renew your Sarasota Shell Club membership at the upcoming membership meeting on Thursday or send check and membership form to:

Mary Jo Bopp, Membership Co-Chair  
5207 10th Ave Dr W  
Bradenton, FL 34209

## Field Observation

Where I live, in south Texas, the most common medium to large gastropods in Corpus Christi Bay is the sinistral lightning whelk, but Florida horseconchs are also common (medium-sized ones). The most common hermit crab is *Clibanarius vittatus*; it inhabits both sinistral and dextral shells.

I do not know if once a juvenile hermit crab settles into a shell of a certain orientation if it can later use a shell with a different orientation. My guess is that it cannot, because once I found a clean, empty dextral shell (*Busycotypus canaliculatus*) near hermit crabs in lightning whelk shells. The only empty lightning whelk shells I find in the bays are either very small, very large (rare), or old and encrusted shells.

The other day I saw something interesting. At first I thought I had caught a bunch of hermit crabs killing a lightning whelk, but then some colleagues suggested that the gastropod may have been moribund and its decaying body attracted the hermit crabs. I do not know for sure if they did kill the gastropod. The literature apparently has only few documented cases of hermit crabs killing a gastropod for its shell; pretty much most papers I have seen mention hermit crabs only use empty shells.

However, what I saw was new to me: one of the hermit crabs had jumped into the shell while the (probably dead) gastropod was still attached to it. The crabs were working together to try to remove the gastropod, all the while having some morsels to eat.

I posted some photos at: <http://www.inaturalist.org/observations/3656662>

Fabio Moretzsohn, on Conch-L

### • More from Carole Marshall:

Hermit crabs WILL kill a mollusk for its shell. Not all of them will, but the nasty yellow legged variety here in FL. will. It has yellow legs with a dark brown stripe down them.

## The Acrobatic Leopard Slug

by Dave Taft in the NY Times (edited)

The leopard slug is about as beautiful as a slimy garden pest can be, and at nearly five inches long, is impressive if not quite lovely. An import originally native to southern Europe, it has easily adapted to life in North America, and is common under a wide variety of boards, rocks and flowerpots in New York City.

The leopard slug is an overall tawny brown. It is attractively spotted and streaked with darker brown (effective camouflage, if you live under a rock). All slugs are slimy, but the leopard is especially so, giving it a highly unappealing and wonderful defense against predators. If you choose to pick one up, be ready to do some serious scrubbing afterward.

Probably the last animal on earth you might suspect of living a wild sex life, the leopard slug (*Limax maximus*) is a hermaphrodite, and during any mating encounter, it is possible, even likely, that the two partners will leave their one-night stand pregnant. Shortly after, each will crawl off to a damp, dark spot and deposit about 200 relatively large, clear eggs.

The leopard slug engages in an acrobatic aerial coitus that would make Caligula blush. Upon meeting, two slugs race at what passes for super-slug speed to a ledge, overhang or low branch. Intertwined, they melodramatically let go, suspending themselves on a kind of long bungee cord spun from their most persistent slime. Then, enwrapped in each other's well-lubricated embrace and suspended yards above the ground, they extend

penises and exchange spermatophores.

The only modest thing about these slugs' love life is that their encounters happen exclusively after dark.

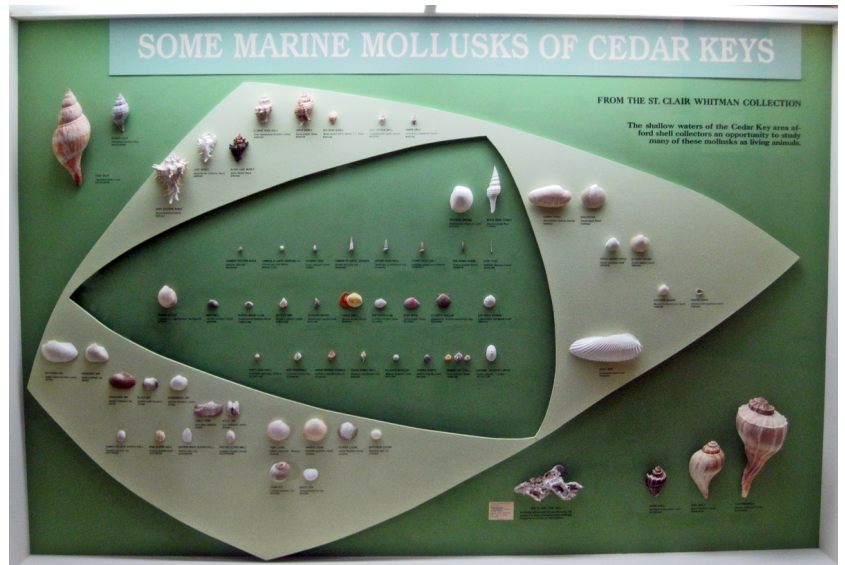




# Cedar Key Museum

*by Ron Bopp*

While vacationing on the Gulf Coast town of Cedar Key, Florida in mid June, 2017 our party of six RV'ers came across the Cedar Key Museum located at the Cedar Key Museum State Park. Cedar Key today is known as a tourist destination but early in the 19<sup>th</sup> century it was noted for its production of cedar pencils. One of the pencil giants was a St. Clair Whitman, who apparently was also an amateur malacologist. The museum has several displays of Whitman's shell collection. The first display (below) is encountered upon entering the museum at which I noted it was directly in the path of incoming sunlight, potentially causing a fading problem in the future. Inside the museum where there was subdued lighting were two more well-done displays (right). All the displays were very nice and showed some great



shells. Mary Jo and I scoured the waters around our RV Park and only found scallops and an occasional Crown Conch.



## SARASOTA SHELL CLUB MEETING

April 14, 2016

Sally Peppitoni, President opened the meeting at 7:07 at the Waldemere Fire Station. She noted this was the last meeting of the season. 31 Members were present and 2 guests.

Peggy Williams had the program for the evening on "Shells of Baja Mexico". Peggy noted that she has been to 32 different countries collecting shells.

March meeting minutes were printed in Beauui. Angela Sampogna moved to accept the minutes as printed, Karen Huether (2<sup>nd</sup>), minutes accepted.

Bruce Paulsen gave the Treasurers Report. Bruce stated that there is a printed report upon member's request. He spoke to the financial report for the Shell Show. At this time he is unsure whether we will be able to have a show in 2017 secondary to a price increase at the convention center, including the center gave away any dates we are able to have a show to others shows that book a longer time. He had looked into some other venues, costs of all have risen and most have the first 3 months of the year booked already. Venice municipal auditorium is also booked for first 3 months of the year. Shriners Hall did not have any dates available until April or May. They told us there might be a possibility in 2018. Devyn has requested \$9000. Upfront payment, board members do not feel this would be a wise decision. At this time a show for 2017 is undetermined.

Members continued discussion about dates and notifying dealers. Also spoke to the importance of increasing advertising if there will be a show. If Bradenton Convention Center becomes available the members agreed we should do a show.

Collections and donations to the Club for awards to date; \$1107.00 for Wolenik and \$110.00 for Tom Cassin.

Sally announced that the Club's books will be audited by Karen Huether and Pete Steelman.

Nancy Marini, Artisans group announced that the group has joined the Surface Guild which is a part of the FAB art show. This will

allow the Artisans to create some high end shell objects and be juried into their show.

Linda Greiner, Librarian will be available to the summer and will meet any member at the Library to view or pick up books.

Duane Hoffmann, Historian noted 50 years ago the Shell Show budget was \$600.00. 25 years there was a purchase of leis for a Hawaiian potluck dinner.

Membership booklets are available with sticker updates.

Field Trips, please let Sally know if there are places you'd like to shell or heard are good for shelling for our members, she will plan a walk or a trip.

Sunshine – No Report

Old Business: Election process was initiated by Sally. Donna Cassin nominated Jeanne Corbin for the Recording Secretary. No other nominations were given. Angela Sampogna, Election Chair announced the current officers and board members that are currently in place and have agreed to continue their service. Angela requested Donna Bartels, Recording Secretary to cast a unanimous ballot for the nominees. All members accepted the ballot by saying "Aye"

**Officers:** Sally Peppitoni, President

Nancy Marini, Vice President

Bruce Paulsen, Treasurer

Jeanne Corbin, Recording Secretary

Peggy Williams, Corresponding Sec'ty

**Board Members:** Donna Cassin 1 year

JoAnn Mancuso 1 year

Donna Krusenoski 1 year

Roseann Roble 1 year

Harry Barryman 2 years

Karen Paulsen 2 years

New Business: Annual Donations recommended by Board are as follows"

\$1000.00 New College

\$100.00 Delaware Museum

\$200.00 Bailey Matthews Museum

\$1500.00 Carefree Learner

Peggy Williams made a motion that we accept Board recommendations, Nancy Marini (2<sup>nd</sup>), motion carried. Treasurer will issue and mail donations.

Sally closed the meeting at 8:35 p.m.

Donna Bartels

Recording Secretary

## Board Members

Sally Peppitoni	President
Nancy Marini	Vice President
Bruce Paulsen	Treasurer
Donna Bartels	Recording Sec'y
Peggy Williams	Corresponding Sec'y

**Board:** Donna Krusenoski-1, Deborah Deam-1, Donna Cassin-2, JoAnn Mancuso-2, Harry Berryman-3, Karen Paulsen-3

## Committee Chairmen

Artisans:	Nancy Marini
Beauti:	Peggy Williams 355-2291
Historian:	Duane Kauffmann
Field Trips:	Sally Peppitoni
Librarian:	Linda Greiner 993-5161
Membership:	Mary Jo Bopp
Shell Show:	Board
Sunshine:	Karen Ciffin
Webmaster	Bruce Paulsen

## Calendar

**Sep 17-18** NC Shell Show Wilmington  
**Oct 22-23** Philadelphia Shell Show

### More info on Calendar Events

available from Peggy Williams.

## More New Shells

Two more shells in the Turridae group have been named for Peggy Williams. Since there were only one of each species available for a type, they are holotypes and are in the Smithsonian. Peggy just has photos!

## To Find Sarasota Tides

<http://tbone.biol.sc.edu/tide/tideshow.cgi?site=Sarasota%2C+Sarasota+Bay%2C+Florida+%28%29>

Site will show the week's tides. Go to prediction options below for one-month calendar. Choose options: Suppress, Suppress, Show, Show; Start at desired year & month. Choose hour format, show day.

### Meetings on the

second Thursday of Sept through April at 7:00 p.m., at Waldemere Fire Station, 2070 Waldemere St. in Sarasota. Park in small lot on the right or in nursing home lot across the street.



**Dues:** New Single Members \$21.50 New Family Members (2+ at same address) \$33.00.

**Renewals:** \$15.00 for Single, \$20.00 for Family (2+ at same address).

**If you want your newsletter printed and mailed add \$15.00.**

## Sarasota Shell Club

P.O. Box 4124  
Sarasota, FL 34230-4124  
Editor: [Peggy@Shelltrips.com](mailto:Peggy@Shelltrips.com)  
[www.Sarasotashellclub.com](http://www.Sarasotashellclub.com)