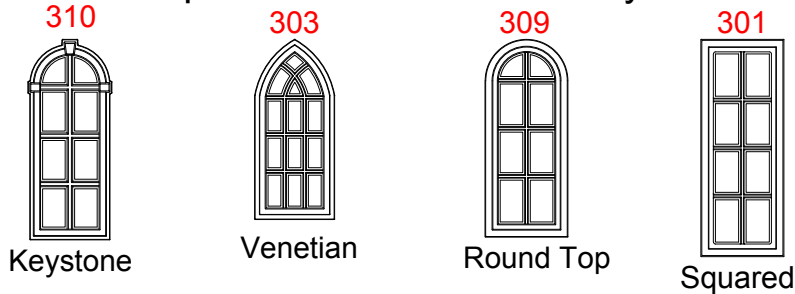


Cupola Data

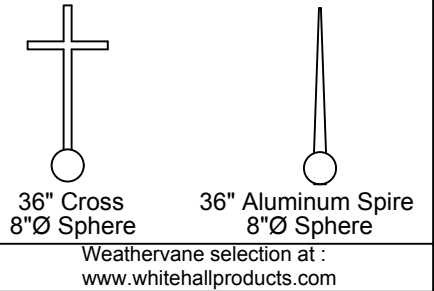
Overall Height = 11' 10 3/16"
 Base Width = 6'
 Unit Weight = 800 lbs.

Optional Window Panel Styles

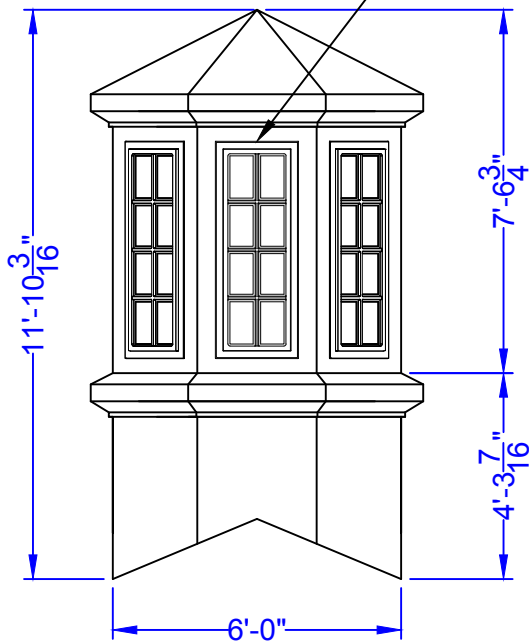


Note: Windows also available without panes.

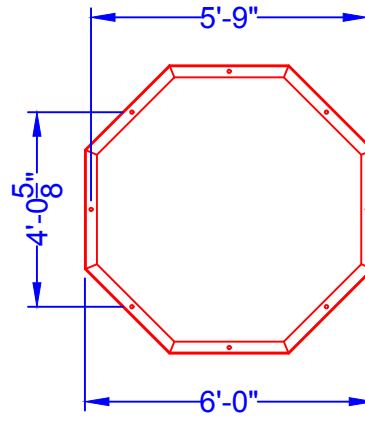
Optional Cupola Finials



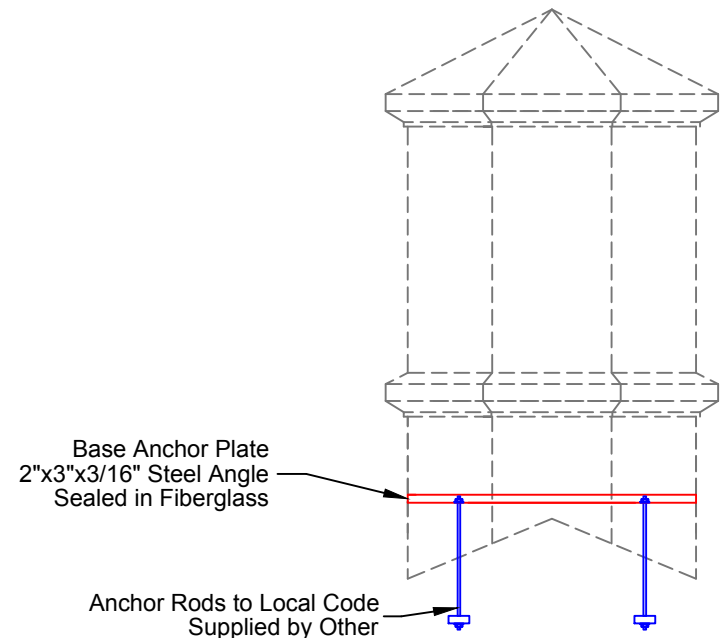
Base Panels - WPK Model Standard
 with (8) K-glass Windows. Optional
 Window Panel Styles Listed Above.



Elevation View



Mounting Detail



Skeleton View



PIEDMONT
 COMPOSITES & TOOLING

33 Lewittes Rd.
 Taylorsville, NC 28681
 Phone: 828-632-8883
 Fax: 828-632-5585
 www.piedmontcomposites.com

Model :

CUPOLA
600WPK

Scale:
 N/A
 Drawn by:
 K.SHERRILL
 Created On
 N/A
 Updated On
 05/08/19

Note: All drawings are the property of Piedmont Composites & Tooling, LLC. Variation in material thickness, dimension and weight may occur. PCT reserves the right to change or modify design at anytime without notice.