



# Chronic Wasting Disease Update

# CWD Results (as of Feb 2017)

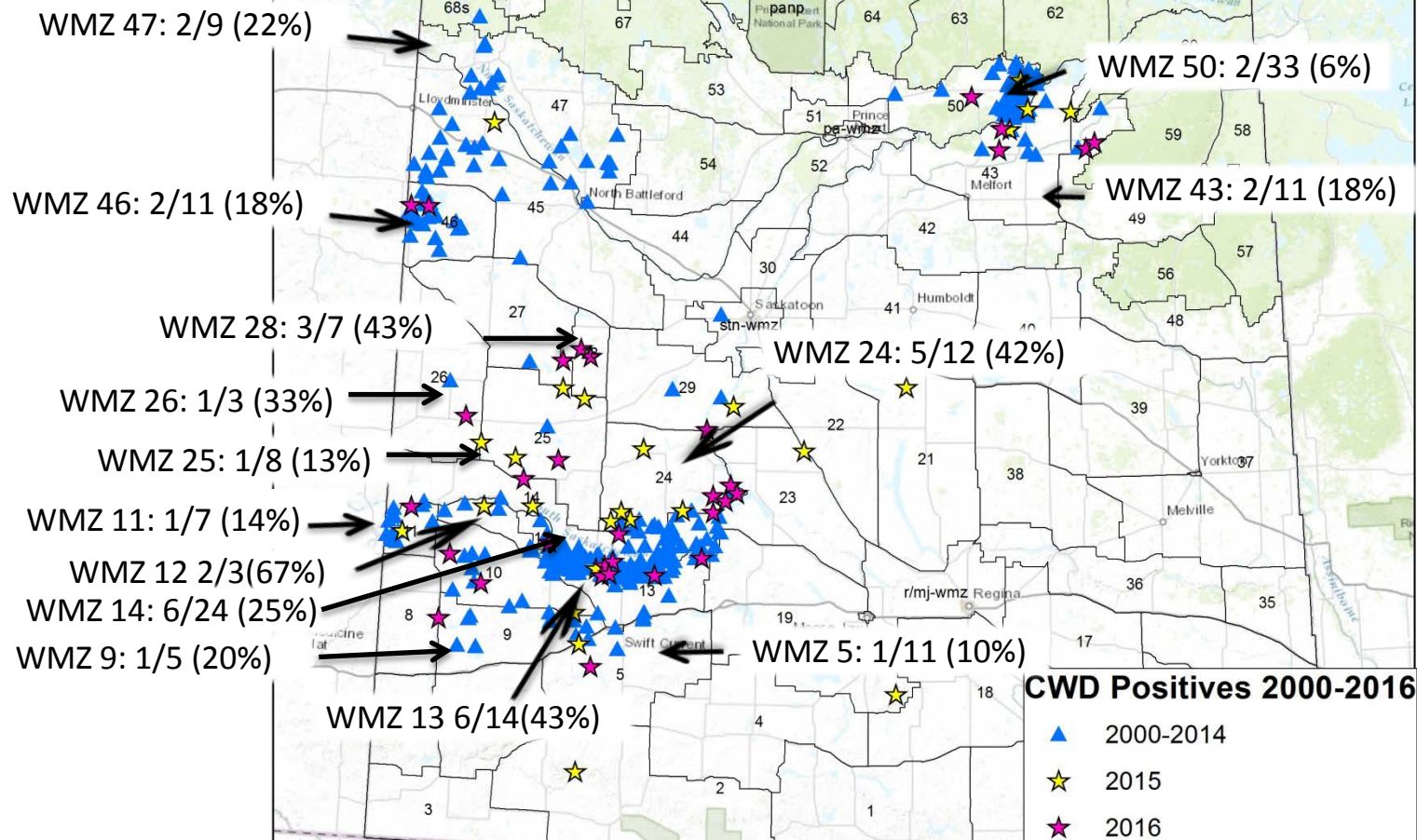
	2015	2016
Total tested	245	367
Heads tested (hunter)	19 / 202 (~10%)	30 / 325 (~9%)
Diagnostics (CO)	7 / 43 (~16%)	10 / 42 (~24%)
New WMZs	4 (2W, 18, 21, 23)	1 (WMZ 28)

*\*MD 20, WTD 5, Moose 1*

*MD 27, WTD 13*



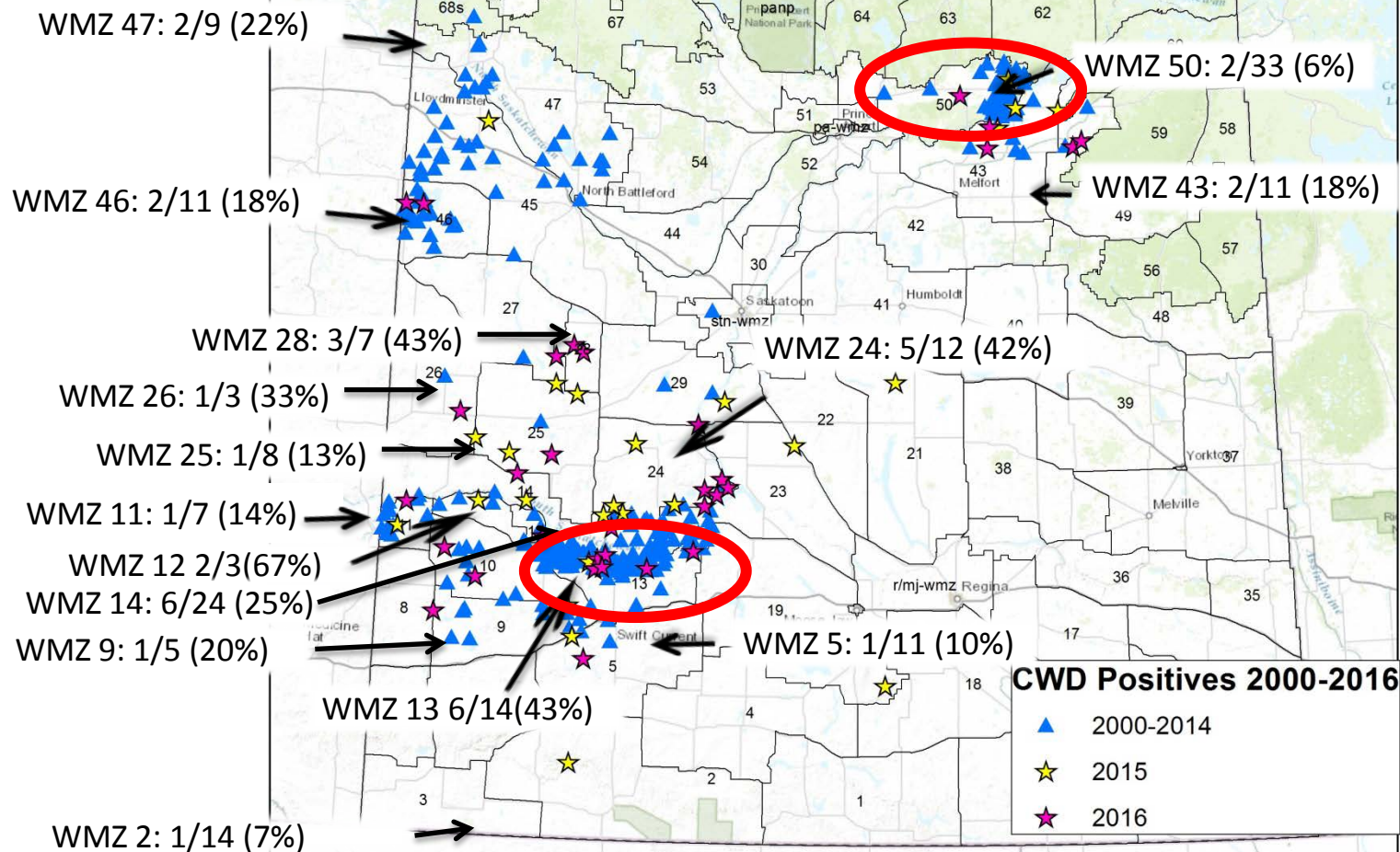
# CWD positives 1997-2003: 12 / 11,221 samples



Map generated February 16, 2017

Sources: Esri, DeLorme, NAVTEQ, TomTom, Intermap, increment P Corp., GEBCO, USGS, FAO, NPS, NRCAN, GeoBase, IGN, Kadaster NL, Ordnance Survey, Esri Japan, METI, Esri China (Hong Kong), swisstopo, and the GIS User Community

# CWD positives 1997-2003: 12 / 11,221 samples



Map generated February 16, 2017

Sources: Esri, DeLorme, NAVTEQ, TomTom, Intermap, increment P Corp., GEBCO, USGS, FAO, NPS, NRCAN, GeoBase, IGN, Kadaster NL, Ordnance Survey, Esri Japan, METI, Esri China (Hong Kong), swisstopo, and the GIS User Community



# Literature...

- Empirical evidence of population declines
  - Wyoming
    - 10% annual decline WTD (30% prevalence)  
Edmunds et al. 2016; PLoS ONE 11(8): e0161127. doi:10.1371/journal.pone.0161127
    - 19% annual decline MD (40% prevalence)
  - Shift in age ratio
- Loss of hunting opportunity  
Foley et al.2017; PLoS ONE 11(10):e0163592. [ttp://dx.doi.org/10.1371/journal.pone.0163592](http://dx.doi.org/10.1371/journal.pone.0163592)
- Longer the disease persists, rate of infectivity will increase



# CWD Working Group

- Ministry of Environment
  - Ministry of Agriculture
  - Ministry of Health
  - CWHC
  - APAS
  - Regina Game and Fish
  - SARM
  - SK Wildlife Federation
  - SK Bowhunters Association
  - SK Outfitters Association
  - Nature Saskatchewan
  - Parks Canada
- 
- Purpose is provide recommendations on CWD actions



# Objectives of the CWD Plan

- Eradicate CWD – not feasible at current time.
- Minimize impacts of CWD (populations, ecosystems, hunting)
- Prevent / slow the spread of CWD (**farmed, wild**)
- Evaluate effects of CWD (populations, prevalence)
- Reduce exposure of CWD (humans, domestic animals)

# Potential Management Options:

- Manage deer populations for optimal ecosystem health
- Reduce aggregations of deer
  - ban supplemental feeding and baiting
  - Improve agricultural practices
- Reduce deer densities (caribou range)
- Moratorium on new game farms
- Continued research to assess management impacts





# We need your feedback!

© Hamilton Greenwood  
Earthsong Gallery

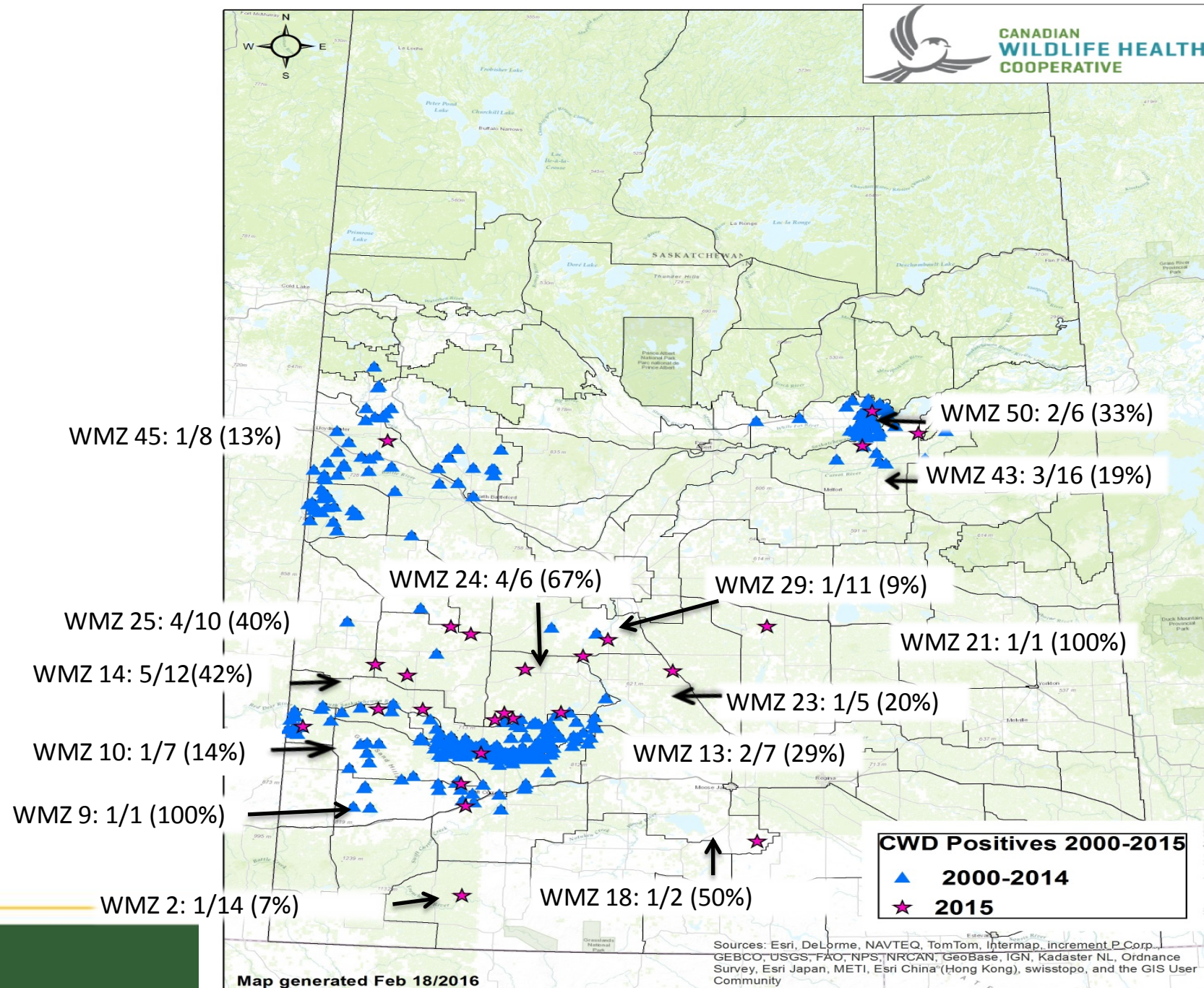


# THANK YOU



• Hamilton Greenwood  
Earthsong Gallery







# 2015 CWD Results (245 heads tested)

202 heads tested (hunters)

- **19** CWD positives (~10% of heads received)

43 diagnostics (COs, non-hunter)

- **7** CWD positives (~16%)

4 new zones (2W, 18, 21, 23)

MD **20**, WTD **5**, Moose **1**



Government  
— of —  
Saskatchewan

# 2016 CWD Results (367 heads tested)

*\*Feb 2017*

325 heads tested (hunters)

- **30** CWD positives (~9% of heads received)

42 diagnostics (COs, non-hunter)

- **10** CWD positives (~24%)

1 new zone (WMZ 28)

MD **27**, WTD **13**



Government  
— of —  
Saskatchewan