



ANY ELECTRICAL AND MECHANICAL ITEMS SHOWN ARE DIAGRAMMATIC AND ARE SHOWN FOR THE LIMITED PURPOSE OF INDICATING LOCATIONS OF REQUIRED FIXTURES. MECHANICAL AND ELECTRICAL INSTALLATIONS SHALL BE THE RESPONSIBILITY OF THE CONTRACTOR. THE CONTRACTOR SHALL OBTAIN ALL NECESSARY PERMITS AND REGULATIONS REQUIRED BY THE AUTHORITY HAVING JURISDICTION. CONTRACTOR SHALL COORDINATE THE INSTALLATION OF NEW SYSTEMS WITH EXISTING SYSTEMS.

Project:
THE **Σ** **NU**
SIGMA NU
RENOVATIONS
630 DUBUQUE STREET
IOWA CITY, IOWA

Project number: 09.03

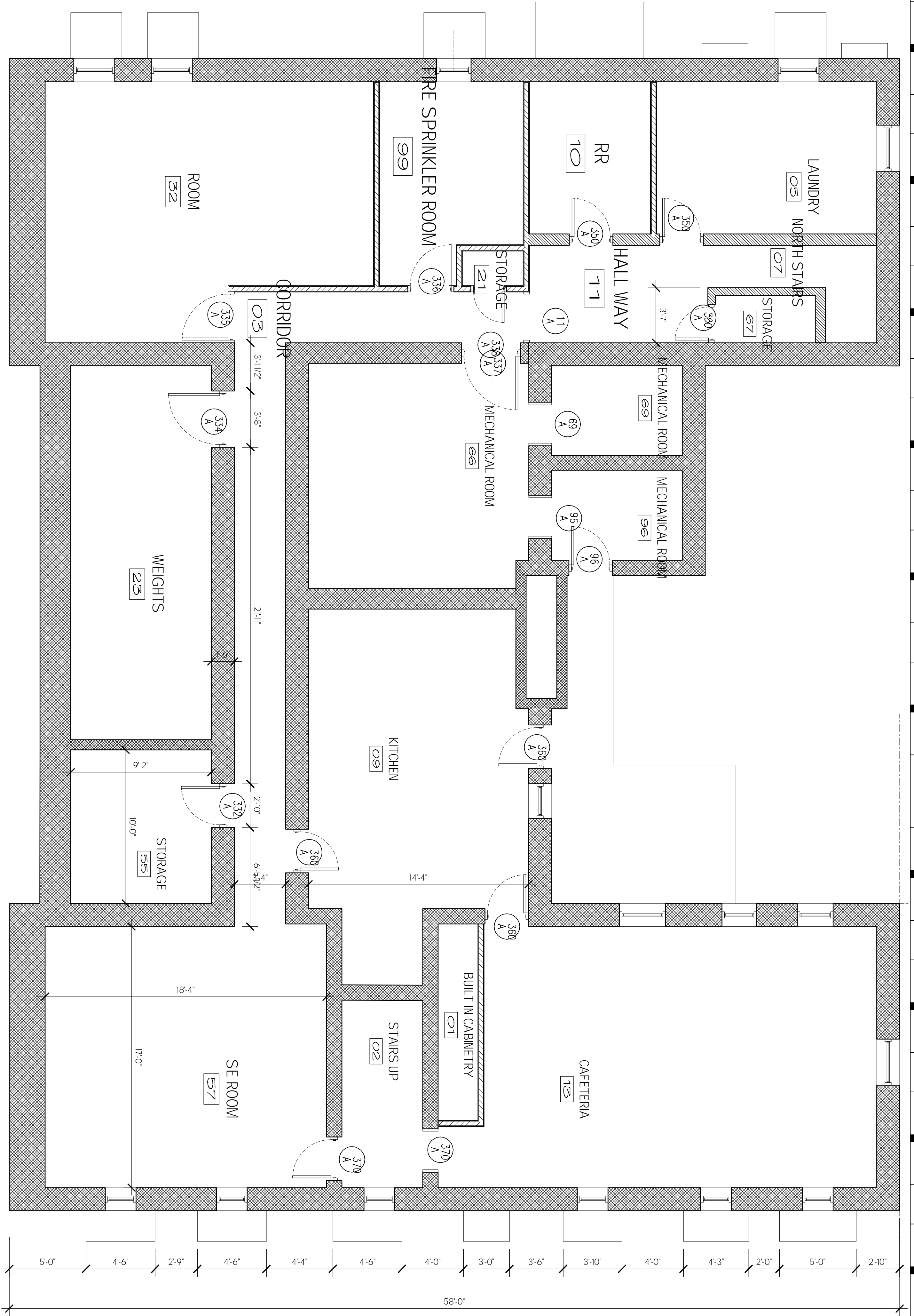
Note: © COPYRIGHT
 UNAUTHORIZED COPYING,
 DISCLOSURE OR CONSTRUCTION
 WITHOUT WRITTEN PERMISSION
 BY THOMAS MCINERNEY, ARCHITECT,
 IS PROHIBITED.

Issue date:
Date **Description**
 2011.04.14 PERMIT REVIEW

Sheet Title:
basement
plan

Sheet Number:

a-100



BASEMENT FLOOR PLAN
 1/4" = 1'-0"
 PLAN NORTH

AREA SCHEDULE

Number	Room Name	Net Area
01	BUILT IN CABINETRY	39 SF
02	STAIRS UP	80 SF
03	CORRIDOR	188 SF
05	LAUNDRY	142 SF
07	NORTH STAIRS	33 SF
09	KITCHEN	306 SF
10	RR	78 SF
11	HALL WAY	74 SF
13	CAFETERIA	434 SF
21	STORAGE	10 SF
23	WEIGTHS	223 SF
32	ROOM	329 SF
35	STORAGE	92 SF
57	SE ROOM	313 SF
66	MECHANICAL ROOM	209 SF
67	STORAGE	18 SF
69	MECHANICAL ROOM	50 SF
96	MECHANICAL ROOM	50 SF
99	FIRE SPRINKLER ROOM	114 SF
		2,781 SF

DOOR AND FRAME SCHEDULE

NO.	ROOM	STYLE	SIZE:PR WxH	Fire Rating	NOTES
10A	RR	Hinged - Single Flush	2'-6" x 6'-8"	20 MINUTE	-
11A	HALL WAY	Casred Opening	3'-0" x 7'-8"	-	-
13A	CAFETERIA	Casred Opening	2'-6" x 6'-8"	-	-
1A	BUILT IN CABINETRY	Hinged - Single Flush	2'-6" x 6'-8"	-	-
21A	STORAGE	Hinged - Single Flush	2'-0" x 6'-8"	20 MINUTE	-
23A	WEIGTHS	Hinged - Single Flush	3'-4" x 6'-8"	20 MINUTE	-
32A	ROOM	Hinged - Single Flush	3'-0" x 6'-8"	20 MINUTE	-
55A	STORAGE	Hinged - Single Flush	2'-6" x 6'-8"	20 MINUTE	-
5A	LAUNDRY	Hinged - Single Flush	2'-6" x 6'-8"	20 MINUTE	-
66A	MECHANICAL ROOM	Hinged - Single Flush	3'-6" x 6'-8"	20 MINUTE	-
67A	STORAGE	Hinged - Single Flush	2'-2" x 6'-8"	90 MINUTE	-
69A	MECHANICAL ROOM	Casred Opening	2'-6" x 6'-8"	-	-
96A	MECHANICAL ROOM	Hinged - Single Flush	2'-6" x 6'-8"	20 MINUTE	-
99A	FIRE SPRINKLER ROOM	Hinged - Single Flush	2'-8" x 6'-8"	20 MINUTE	-
9A	KITCHEN	Hinged - Single Flush	2'-6" x 6'-8"	20 MINUTE	-
9A	KITCHEN	Hinged - Single Flush	2'-6" x 6'-8"	20 MINUTE	-