

## Linked little squares.

Video tutorials available on Youtube.com/bethintx1



I was inspired to create a pattern that looks like you made hundreds of little granny squares and joined them together, but it is made in one piece. This is what I came up with.

This pattern is written and charted to make it 15 squares, but you can shrink or expand it to make in any size.

I recommend using the hook size recommended on the yarn label.

Refer to diagrams and videos for clarification.

Terms:

RS- Right side

WS- Wrong side.

Shell- Group of 3 dc in one space.

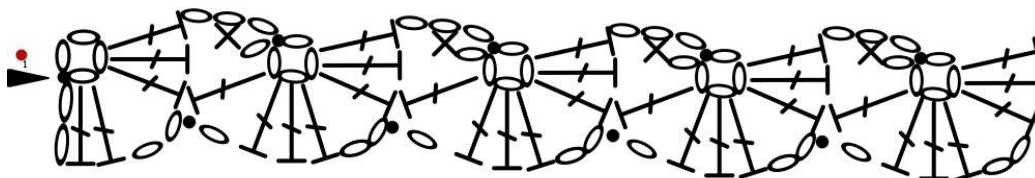
See the chart key at [http://www.craftyarnCouncil.com/chart\\_crochet.html](http://www.craftyarnCouncil.com/chart_crochet.html)

Crochet abbreviations: <http://www.craftyarnCouncil.com/crochet.html>

Begin with the lower left square.

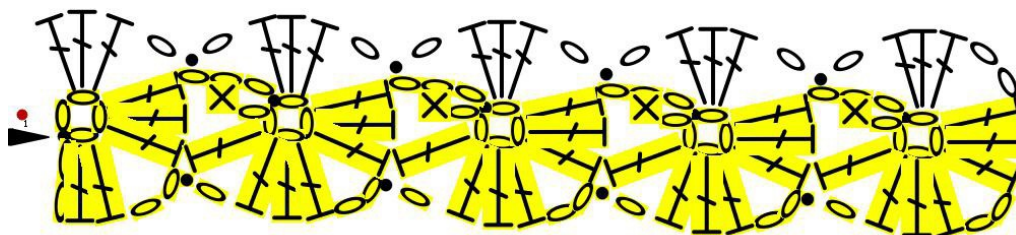
Row 1: a)

Ch 4. Sl st in 4<sup>th</sup> ch to form a ring. Ch 2, (2 dc, ch 2, 3 dc) in ring. *Half (2 shells) of first square made. (RS)* \*Ch 7, Working in the back bump on the chain and the loop above it, sl st in 4<sup>th</sup> ch to form ring. Ch 1, sc in 2<sup>nd</sup> unworked ch. *WS* (counts as 2 dc) Turn to RS, dc into ring. *One shell made.* Hold WS of shell just made back-to-back with the WS of shell of previous square. Sl st in ch-2 sp. Of previous square, Ch 1. *RS* (3 dc, ch 2, 3 dc) in ring. Repeat from \* 3 more times to make 5 squares. (To make piece wider, repeat more times).



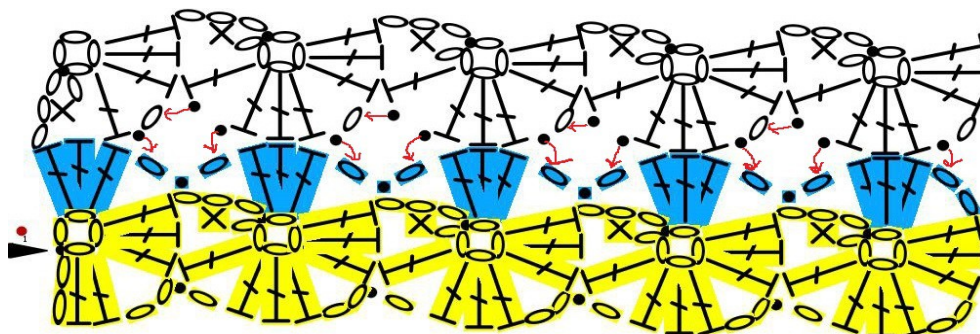
Row 1: b) Worked on RS.

\*(Ch 1, 3 dc) in next ring, ch 1 sl st in ch between squares. Repeat from \* across to last square. (Ch 1, 3 dc) in last ring.



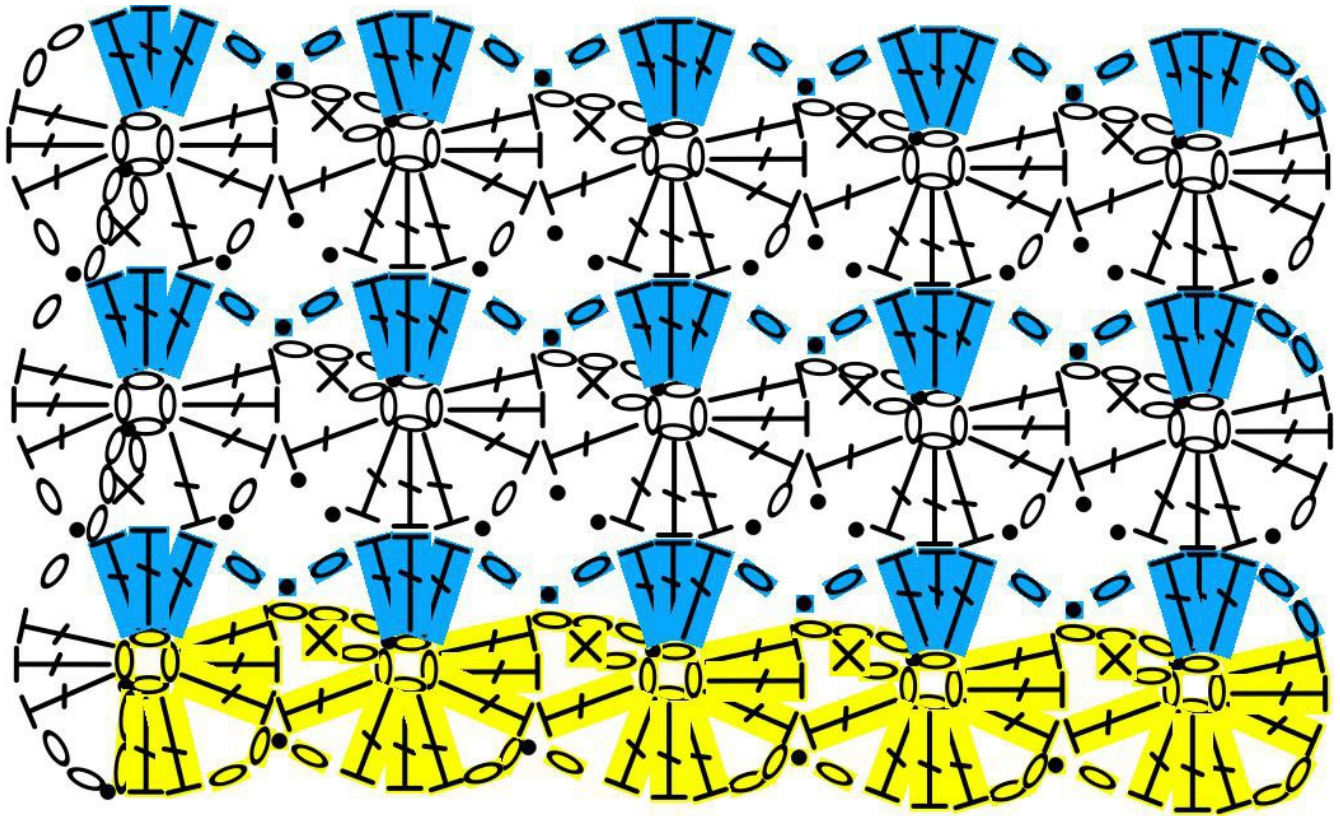
Row 2: a) Ch 7, Working in the back bump on the chain and the loop above it, *WS*, sl st in 4<sup>th</sup> ch to form ring. Ch 1, sc in 2<sup>nd</sup> unworked ch. (counts as 2 dc) Turn to RS, dc into ring. *One shell made.* Hold WS of shell just made back-to-back with the WS of previous square. Sl st in ch-2 sp. Ch 1. *RS* 3 dc in ring.

\*Ch 7, Working in the back bump on the chain and the loop above it, sl st in 4<sup>th</sup> ch to form ring. Ch 1, sc in 2<sup>nd</sup> unworked ch. *WS* (counts as 2 dc) Turn to RS, dc into ring. *One shell made.* Hold WS of shell just made back-to-back with the WS of shell of previous square. Sl st in ch-2 sp. Of previous square, sl st into first ch-sp of next square of previous row. Working on RS, 3 dc in ring. Sl st in WS of second ch sp of same square as *last sl st.* ch 1, turn to RS, 3 dc in ring. Repeat from \* across.



Row 2: b)  
Repeat row 1b.

Row 3:  
Repeat row 2 a & b (Continue to repeat until piece is desired length.)



Finish the ends of the rows:

Repeat Row 1 B. End with ch 2, sl st in top of beginning ch-2.

*Elizabeth Ham January, 2015*