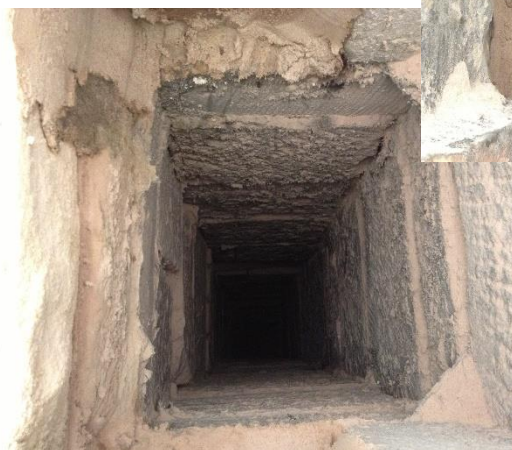




St Mary's in the Marketplace Phase 6 (Week 11)

The funnel of the gas boiler was placed in the original chimney many years ago, and can be seen here, before the chimney is recapped



Next to the old chimney is the second flue, which has obviously been built and lined at a different stage in its history. It serves the same purpose and will enable there to be some

sort of live fireplace to be put onto the Rector's Vestry in due course



Work has continued on the roof this week but not without a rather tricky cutting job! Andy has had to take great care when handling the stainless steel sheets because of the razor sharp edges. Having cut these 8 feet long strips out to plan, and folded them into the right shape, he then had to work out a way of getting them

up from the choir vestry onto the roof without bending them! By the look on his face he obvious likes his job!



A special material covering has been laid on the wooden panelling above the Choir Vestry, prior to the stainless steel finish to the roof. This would, in former times, have been covered in lead. The enormous coping stones on the steeply pitched gables of the Rector's Vestry are commonly known as Saddle stones, and seen from the back are attractively, if simply, carved in a curve.



Marcus and Paul are pleased to see another piece of the gable above the Oratory Chapel placed safely in

position, hoisted up by a time honoured method, a hoist, operated up by Paul *on the right*.



The chimney was found to be in good enough condition not to need any major work doing to it. It awaits a capping stone, placed on smaller blocks of stone, to allow ventilation to the chimneys shafts. It will look particularly handsome when it is finished and repointed, as will the whole building.



Marcus, the site foreman is not contemplating going down the chimney! He is admiring the work done to clear the two chimney shafts which have now been completely cleared, one of which reaches down straight into the Rector's Vestry!