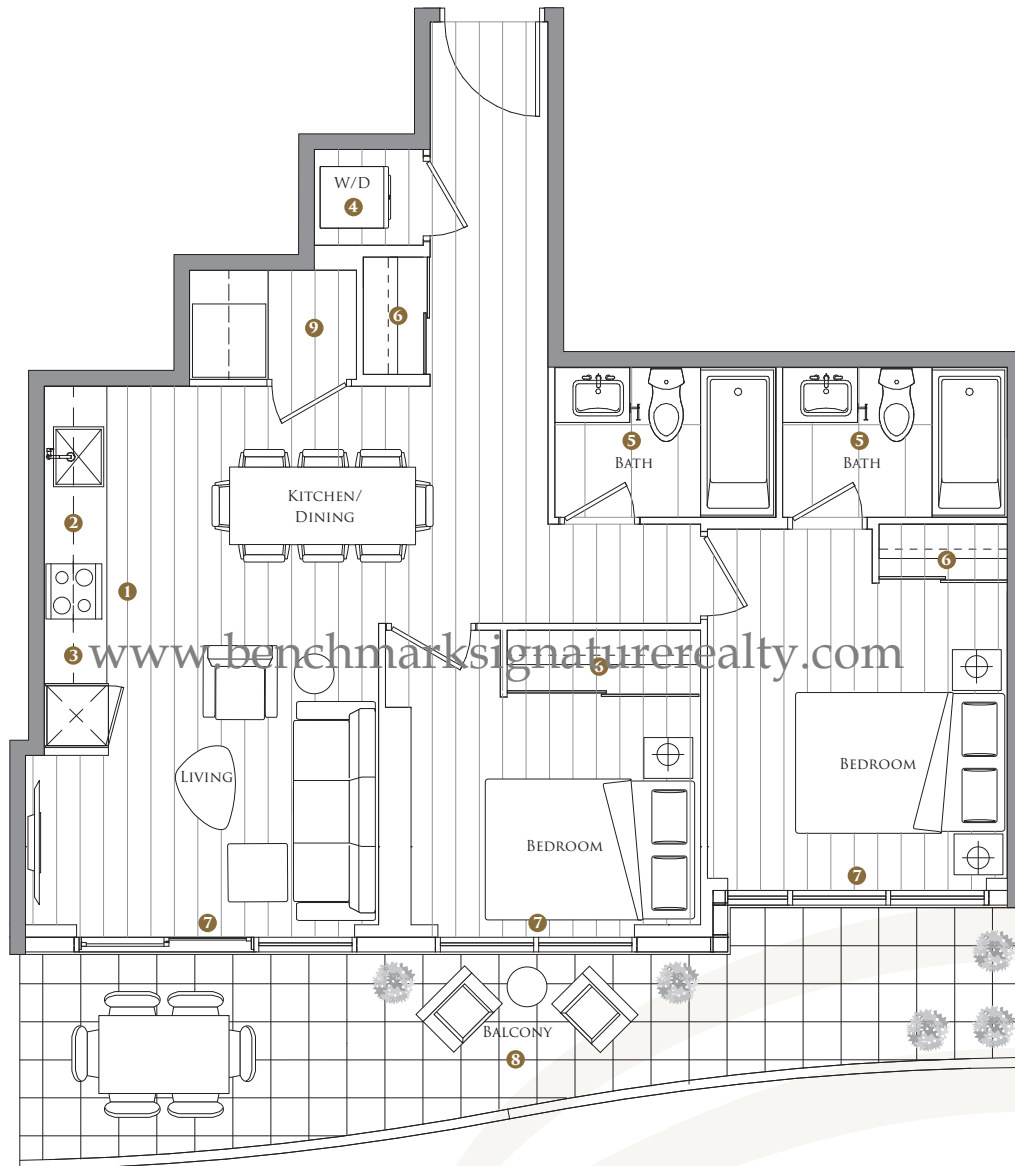
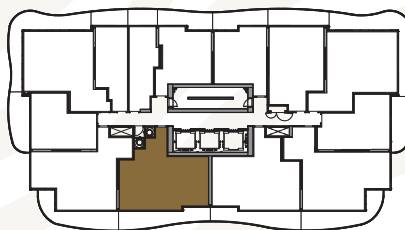


# KING'S LANDING



## SUITE 01 TWO BEDROOMS

TOTAL AREA 988 SQ.FT.	
800 SQ.FT. INDOOR AREA	188 SQ.FT. OUTDOOR AREA



## FEATURE HIGHLIGHTS

- 1 MIELE APPLIANCES
- 2 KITCHEN STORAGE ORGANIZER
- 3 BLUM KITCHEN HARDWARE
- 4 MIELE WASHER/DRYER
- 5 KOHLER/GROHE BATHROOM PLUMBING FIXTURES
- 6 CLOSET ORGANIZER SYSTEM
- 7 ROLLER - SHADES
- 8 COMPOSITE WOOD DECKING
- 9 WINE CELLAR

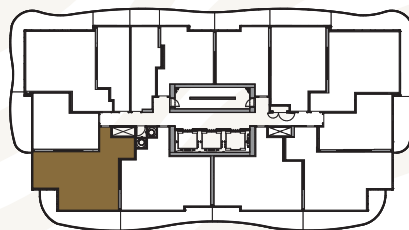
The developer reserves the right to make minor revisions to interior wall locations and exterior window system. All materials and drawings are approximate. Information is subject to change without notice. Actual square footage may vary from the stated floorplan. Furniture and upgrades shown on plans are for illustration purposes only and are not included. E.&O.E.

# KING'S LANDING



## SUITE 02 TWO BEDROOMS

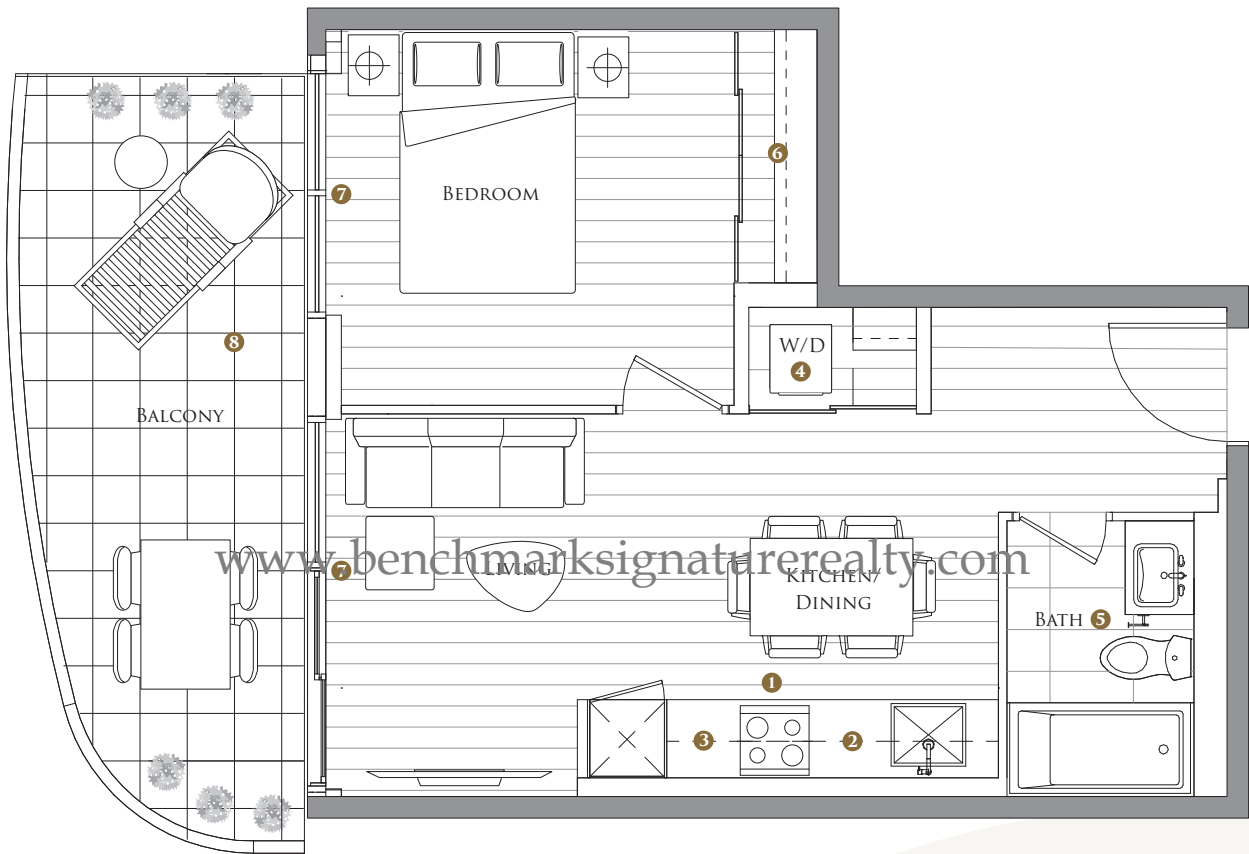
TOTAL AREA 978 SQ.FT.	
780 SQ.FT. INDOOR AREA	198 SQ.FT. OUTDOOR AREA



## FEATURE HIGHLIGHTS

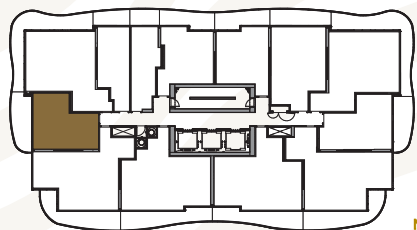
- 1 MIELE APPLIANCES
- 2 KITCHEN STORAGE ORGANIZER
- 3 BLUM KITCHEN HARDWARE
- 4 MIELE WASHER/DRYER
- 5 KOHLER/GROHE BATHROOM PLUMBING FIXTURES
- 6 CLOSET ORGANIZER SYSTEM
- 7 ROLLER - SHADES
- 8 COMPOSITE WOOD DECKING
- 9 WINE CELLAR

The developer reserves the right to make minor revisions to interior wall locations and exterior window system. All materials and drawings are approximate. Information is subject to change without notice. Actual square footage may vary from the stated floorplan. Furniture and upgrades shown on plans are for illustration purposes only and are not included. E.&O.E.



## SUITE 03 ONE BEDROOM

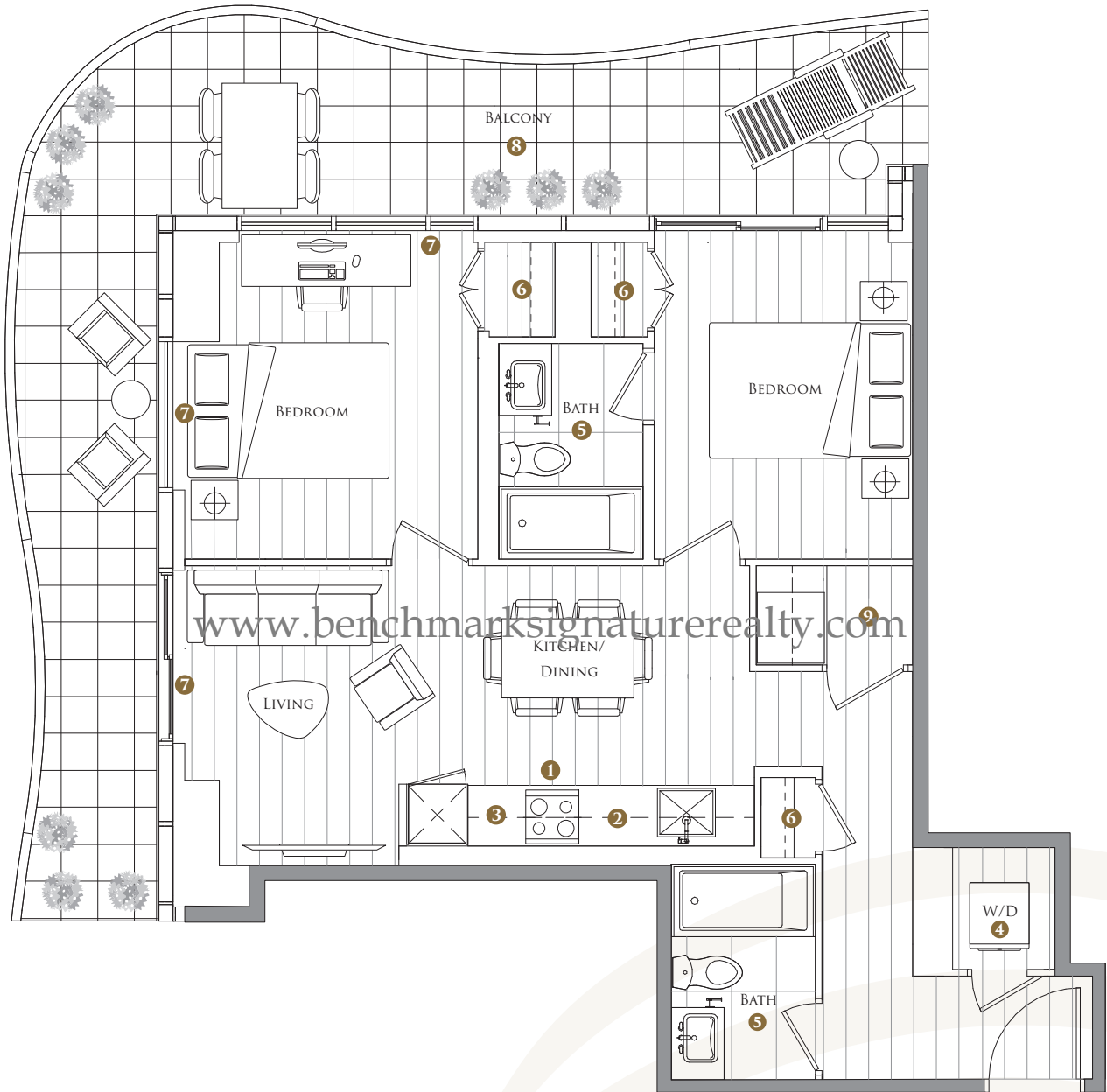
TOTAL AREA 608 SQ.FT.	
455 SQ.FT. INDOOR AREA	153 SQ.FT. OUTDOOR AREA



## FEATURE HIGHLIGHTS

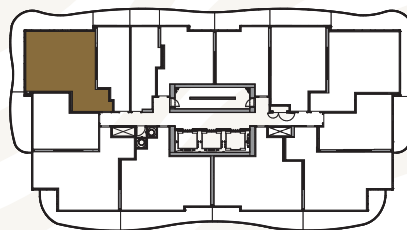
- 1 MIELE APPLIANCES
- 2 KITCHEN STORAGE ORGANIZER
- 3 BLUM KITCHEN HARDWARE
- 4 MIELE WASHER/DRYER
- 5 KOHLER/GROHE BATHROOM PLUMBING FIXTURES
- 6 CLOSET ORGANIZER SYSTEM
- 7 ROLLER - SHADES
- 8 COMPOSITE WOOD DECKING

# KING'S LANDING



## SUITE 05 TWO BEDROOMS

TOTAL AREA 1010 SQ.FT.	
738 SQ.FT. INDOOR AREA	272 SQ.FT. OUTDOOR AREA

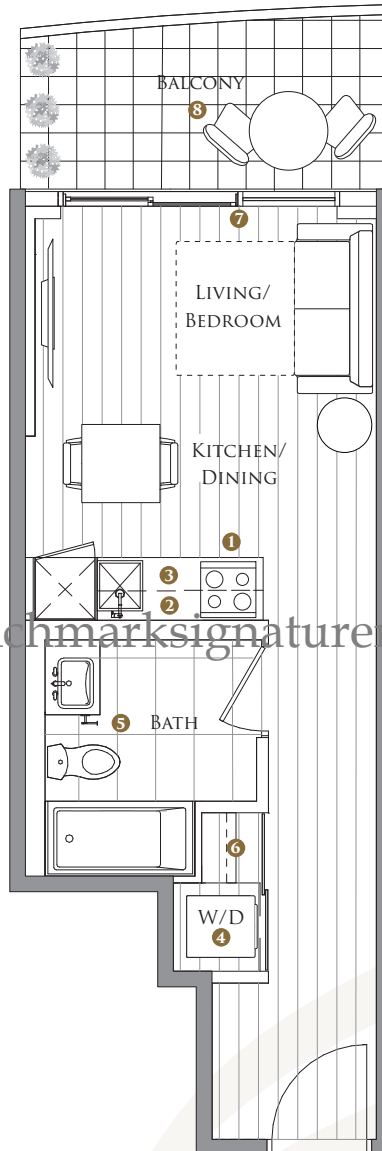


## FEATURE HIGHLIGHTS

- 1 MIELE APPLIANCES
- 2 KITCHEN STORAGE ORGANIZER
- 3 BLUM KITCHEN HARDWARE
- 4 MIELE WASHER/DRYER
- 5 KOHLER/GROHE BATHROOM PLUMBING FIXTURES
- 6 CLOSET ORGANIZER SYSTEM
- 7 ROLLER - SHADES
- 8 COMPOSITE WOOD DECKING
- 9 WINE CELLAR

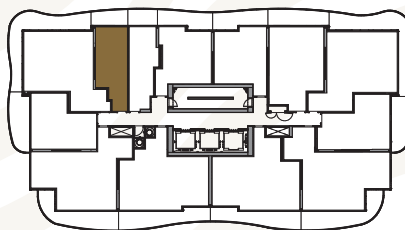
The developer reserves the right to make minor revisions to interior wall locations and exterior window system. All materials and drawings are approximate. Information is subject to change without notice. Actual square footage may vary from the stated floorplan. Furniture and upgrades shown on plans are for illustration purposes only and are not included. E.&O.E.

# KING'S LANDING



## SUITE 06 JUNIOR ONE BEDROOM

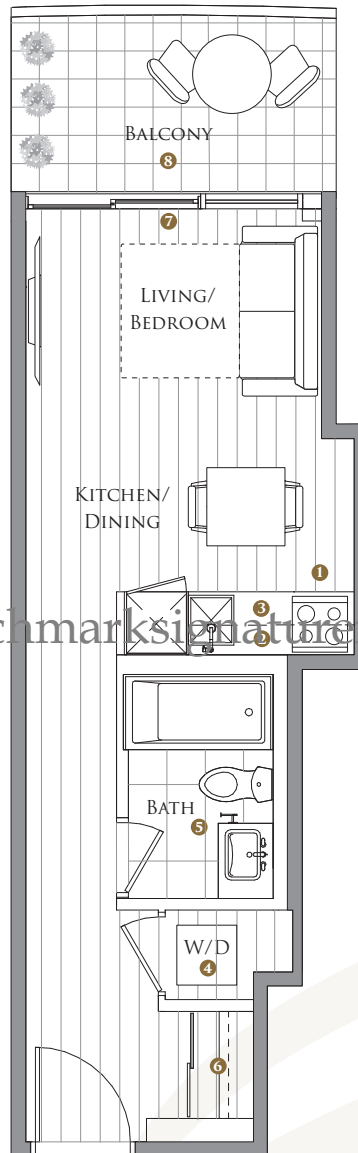
TOTAL AREA 422 SQ.FT.	
348 SQ.FT. INDOOR AREA	74 SQ.FT. OUTDOOR AREA



### FEATURE HIGHLIGHTS

- 1 MIELE APPLIANCES
- 2 KITCHEN STORAGE ORGANIZER
- 3 BLUM KITCHEN HARDWARE
- 4 MIELE WASHER/DRYER
- 5 KOHLER/GROHE BATHROOM PLUMBING FIXTURES
- 6 CLOSET ORGANIZER SYSTEM
- 7 ROLLER - SHADES
- 8 COMPOSITE WOOD DECKING

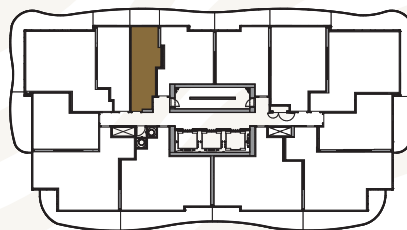
The developer reserves the right to make minor revisions to interior wall locations and exterior window system. All materials and drawings are approximate. Information is subject to change without notice. Actual square footage may vary from the stated floorplan. Furniture and upgrades shown on plans are for illustration purposes only and are not included. E.&O.E.



www.benchmarksignaturerealty.com

## SUITE 07 JUNIOR ONE BEDROOM

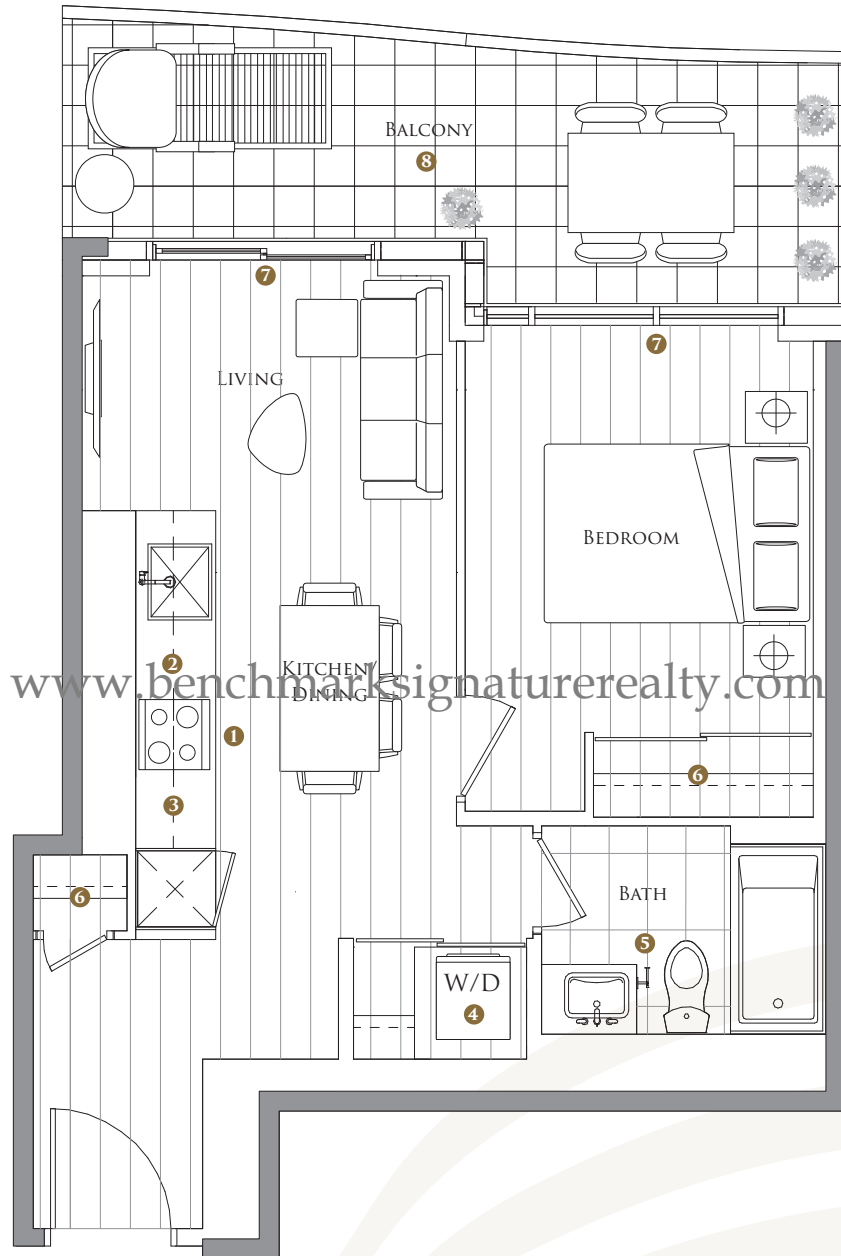
TOTAL AREA 393 SQ.FT.	
330 SQ.FT. INDOOR AREA	63 SQ.FT. OUTDOOR AREA



## FEATURE HIGHLIGHTS

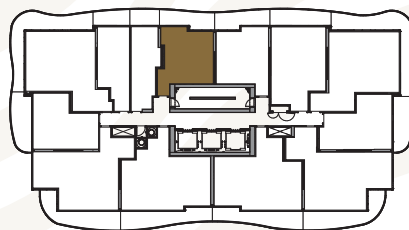
- 1 MIELE APPLIANCES
- 2 KITCHEN STORAGE ORGANIZER
- 3 BLUM KITCHEN HARDWARE
- 4 MIELE WASHER/DRYER
- 5 KOHLER/GROHE BATHROOM PLUMBING FIXTURES
- 6 CLOSET ORGANIZER SYSTEM
- 7 ROLLER - SHADES
- 8 COMPOSITE WOOD DECKING

# KING'S LANDING



## SUITE 08 ONE BEDROOM

TOTAL AREA 600 SQ.FT.	
480 SQ.FT. INDOOR AREA	120 SQ.FT. OUTDOOR AREA

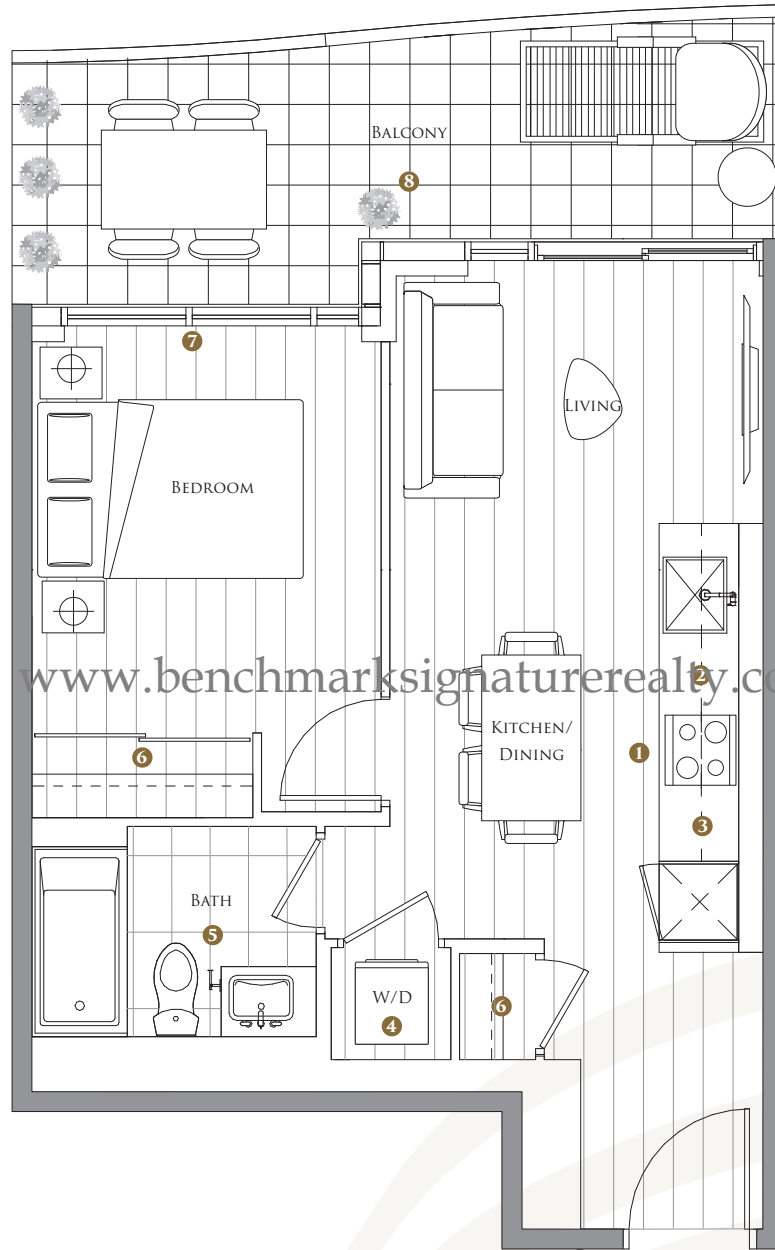


## FEATURE HIGHLIGHTS

- 1 MIELE APPLIANCES
- 2 KITCHEN STORAGE ORGANIZER
- 3 BLUM KITCHEN HARDWARE
- 4 MIELE WASHER/DRYER
- 5 KOHLER/GROHE BATHROOM PLUMBING FIXTURES
- 6 CLOSET ORGANIZER SYSTEM
- 7 ROLLER - SHADES
- 8 COMPOSITE WOOD DECKING

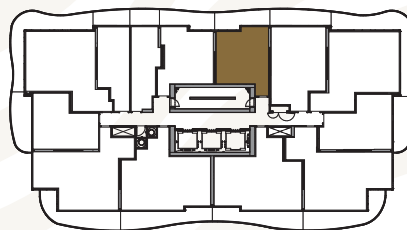
The developer reserves the right to make minor revisions to interior wall locations and exterior window system. All materials and drawings are approximate. Information is subject to change without notice. Actual square footage may vary from the stated floorplan. Furniture and upgrades shown on plans are for illustration purposes only and are not included. E.&O.E.

# KING'S LANDING



## SUITE 09 ONE BEDROOM

TOTAL AREA 600 SQ.FT.	
478 SQ.FT. INDOOR AREA	122 SQ.FT. OUTDOOR AREA



## FEATURE HIGHLIGHTS

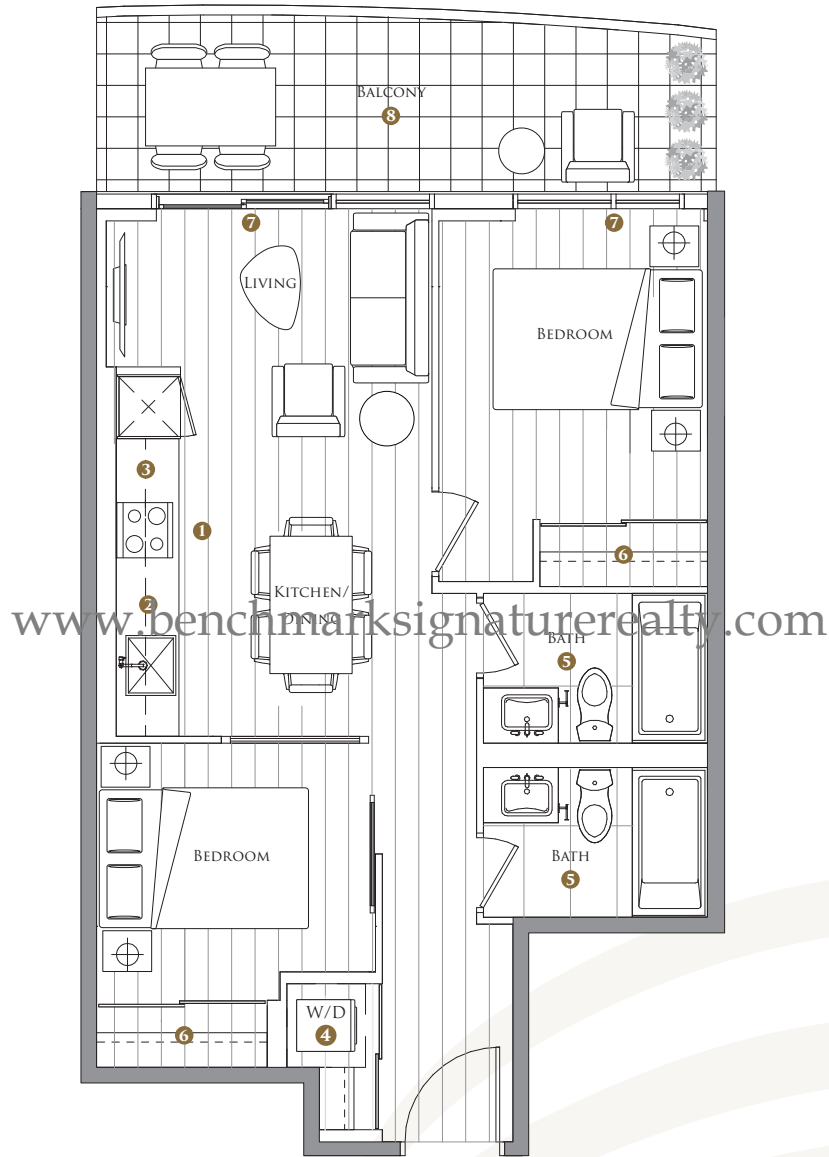
- 1 MIELE APPLIANCES
- 2 KITCHEN STORAGE ORGANIZER
- 3 BLUM KITCHEN HARDWARE
- 4 MIELE WASHER/DRYER
- 5 KOHLER/GROHE BATHROOM PLUMBING FIXTURES
- 6 CLOSET ORGANIZER SYSTEM
- 7 ROLLER - SHADES
- 8 COMPOSITE WOOD DECKING

The developer reserves the right to make minor revisions to interior wall locations and exterior window system. All materials and drawings are approximate. Information is subject to change without notice. Actual square footage may vary from the stated floorplan. Furniture and upgrades shown on plans are for illustration purposes only and are not included. E.&O.E.



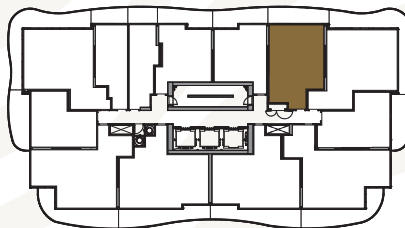


# KING'S LANDING



## SUITE 10 TWO BEDROOMS

TOTAL AREA 745 SQ.FT.	
618 SQ.FT. INDOOR AREA	127 SQ.FT. OUTDOOR AREA

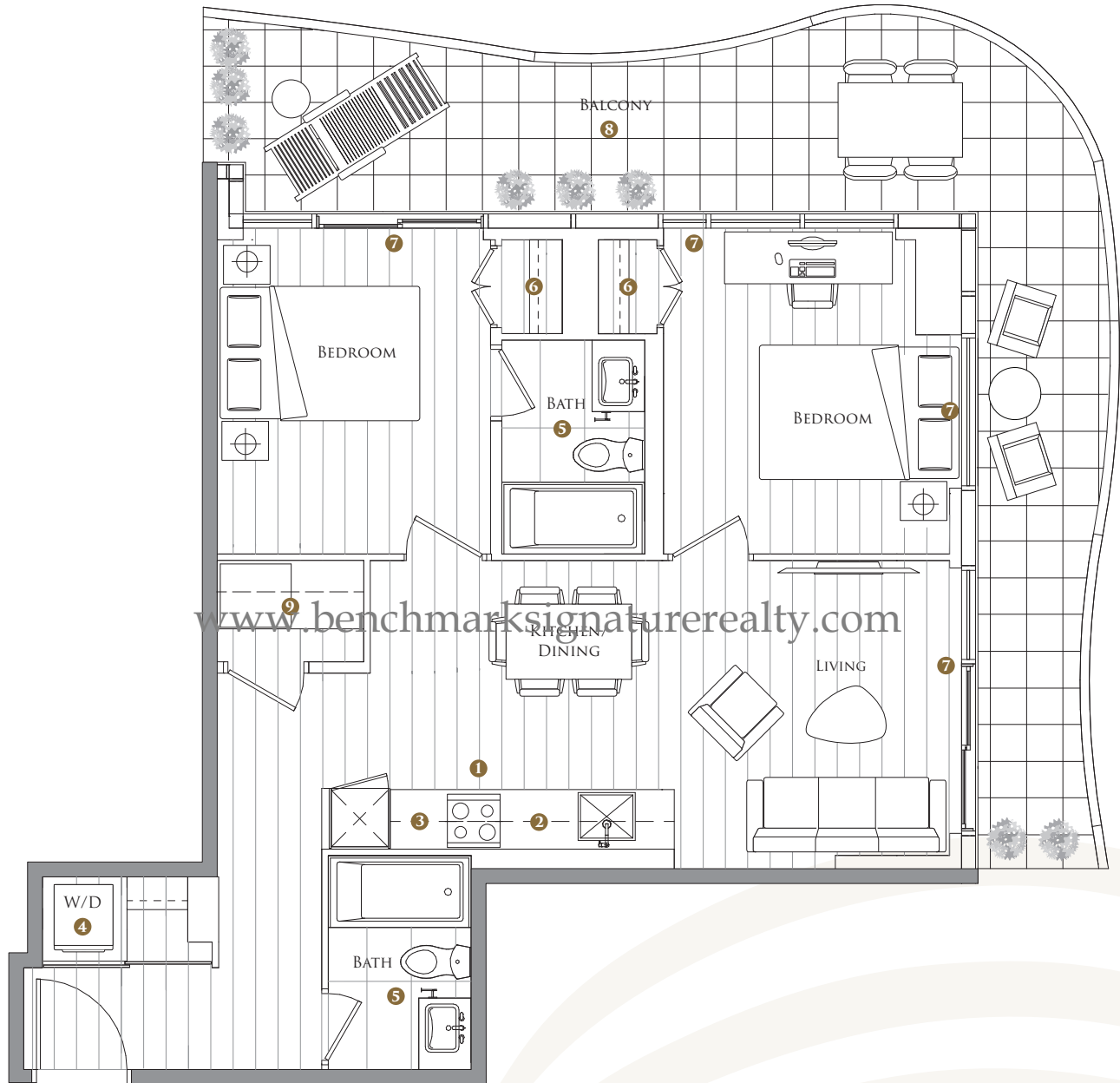


### FEATURE HIGHLIGHTS

- 1 MIELE APPLIANCES
- 2 KITCHEN STORAGE ORGANIZER
- 3 BLUM KITCHEN HARDWARE
- 4 MIELE WASHER/DRYER
- 5 KOHLER/GROHE BATHROOM PLUMBING FIXTURES
- 6 CLOSET ORGANIZER SYSTEM
- 7 ROLLER - SHADES
- 8 COMPOSITE WOOD DECKING

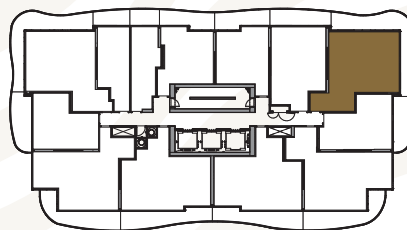
The developer reserves the right to make minor revisions to interior wall locations and exterior window system. All materials and drawings are approximate. Information is subject to change without notice. Actual square footage may vary from the stated floorplan. Furniture and upgrades shown on plans are for illustration purposes only and are not included. E.&O.E.

# KING'S LANDING



## SUITE 11 TWO BEDROOMS

TOTAL AREA	1030 SQ.FT.
760 SQ.FT. INDOOR AREA	270 SQ.FT. OUTDOOR AREA

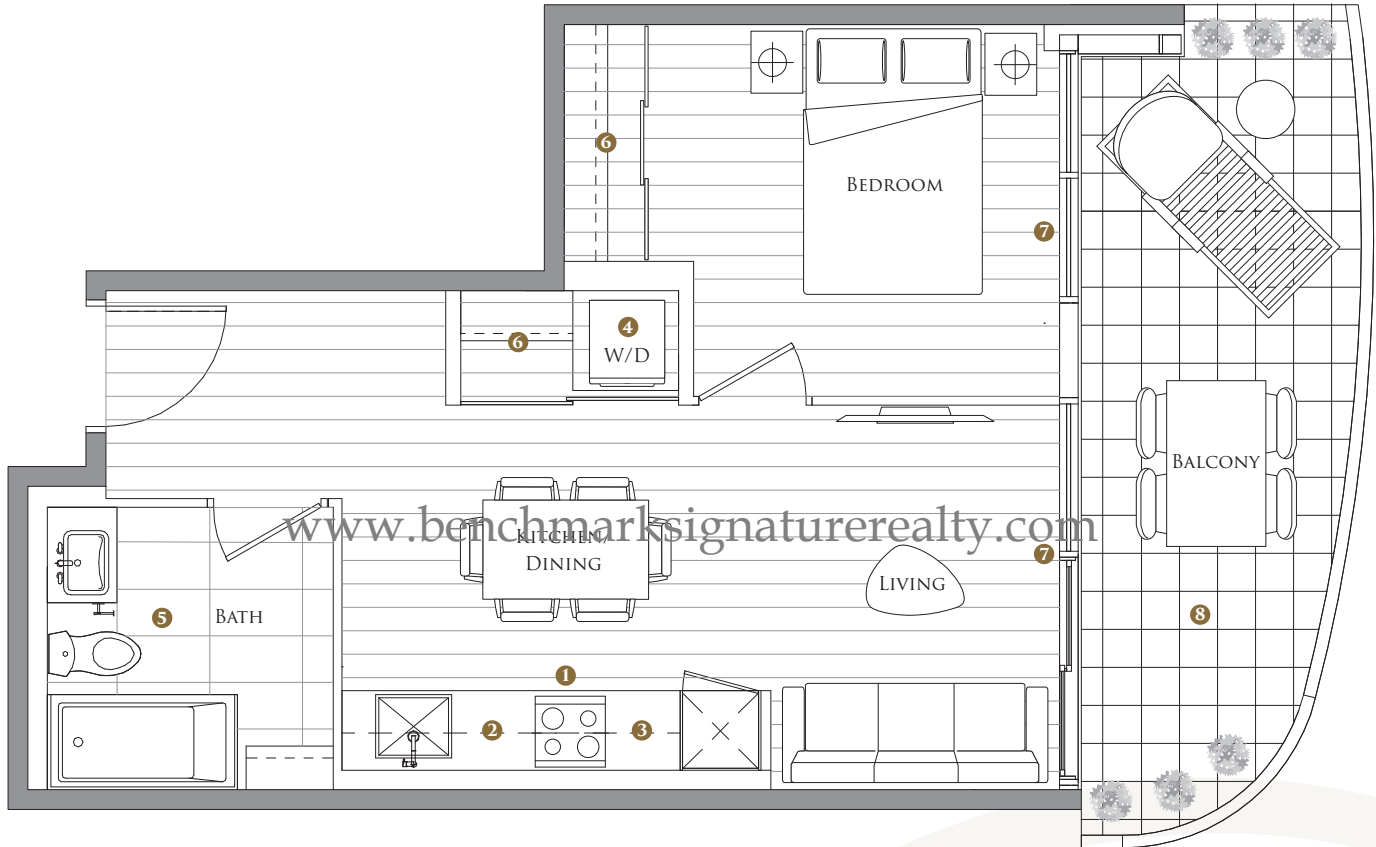


## FEATURE HIGHLIGHTS

- 1 MIELE APPLIANCES
- 2 KITCHEN STORAGE ORGANIZER
- 3 BLUM KITCHEN HARDWARE
- 4 MIELE WASHER/DRYER
- 5 KOHLER/GROHE BATHROOM PLUMBING FIXTURES
- 6 CLOSET ORGANIZER SYSTEM
- 7 ROLLER - SHADES
- 8 COMPOSITE WOOD DECKING
- 9 WINE CELLAR

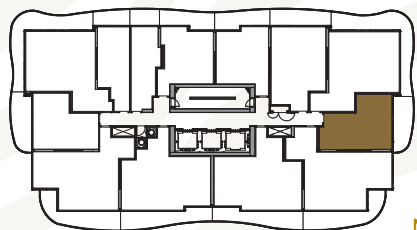
The developer reserves the right to make minor revisions to interior wall locations and exterior window system. All materials and drawings are approximate. Information is subject to change without notice. Actual square footage may vary from the stated floorplan. Furniture and upgrades shown on plans are for illustration purposes only and are not included. E.&O.E.

# KING'S LANDING



## SUITE 12 ONE BEDROOM

TOTAL AREA 628 SQ.FT.	
488 SQ.FT. INDOOR AREA	140 SQ.FT. OUTDOOR AREA



## FEATURE HIGHLIGHTS

- 1 MIELE APPLIANCES
- 2 KITCHEN STORAGE ORGANIZER
- 3 BLUM KITCHEN HARDWARE
- 4 MIELE WASHER/DRYER
- 5 KOHLER/GROHE BATHROOM PLUMBING FIXTURES
- 6 CLOSET ORGANIZER SYSTEM
- 7 ROLLER - SHADES
- 8 COMPOSITE WOOD DECKING

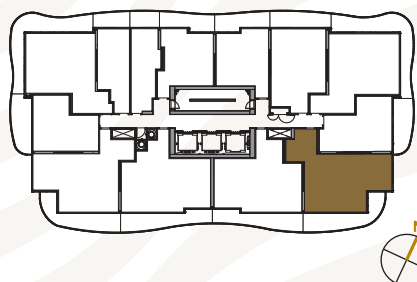
The developer reserves the right to make minor revisions to interior wall locations and exterior window system. All materials and drawings are approximate. Information is subject to change without notice. Actual square footage may vary from the stated floorplan. Furniture and upgrades shown on plans are for illustration purposes only and are not included. E.&O.E.

# KING'S LANDING



## SUITE 15 TWO BEDROOMS

TOTAL AREA	1000 SQ.FT.
800 SQ.FT. INDOOR AREA	200 SQ.FT. OUTDOOR AREA

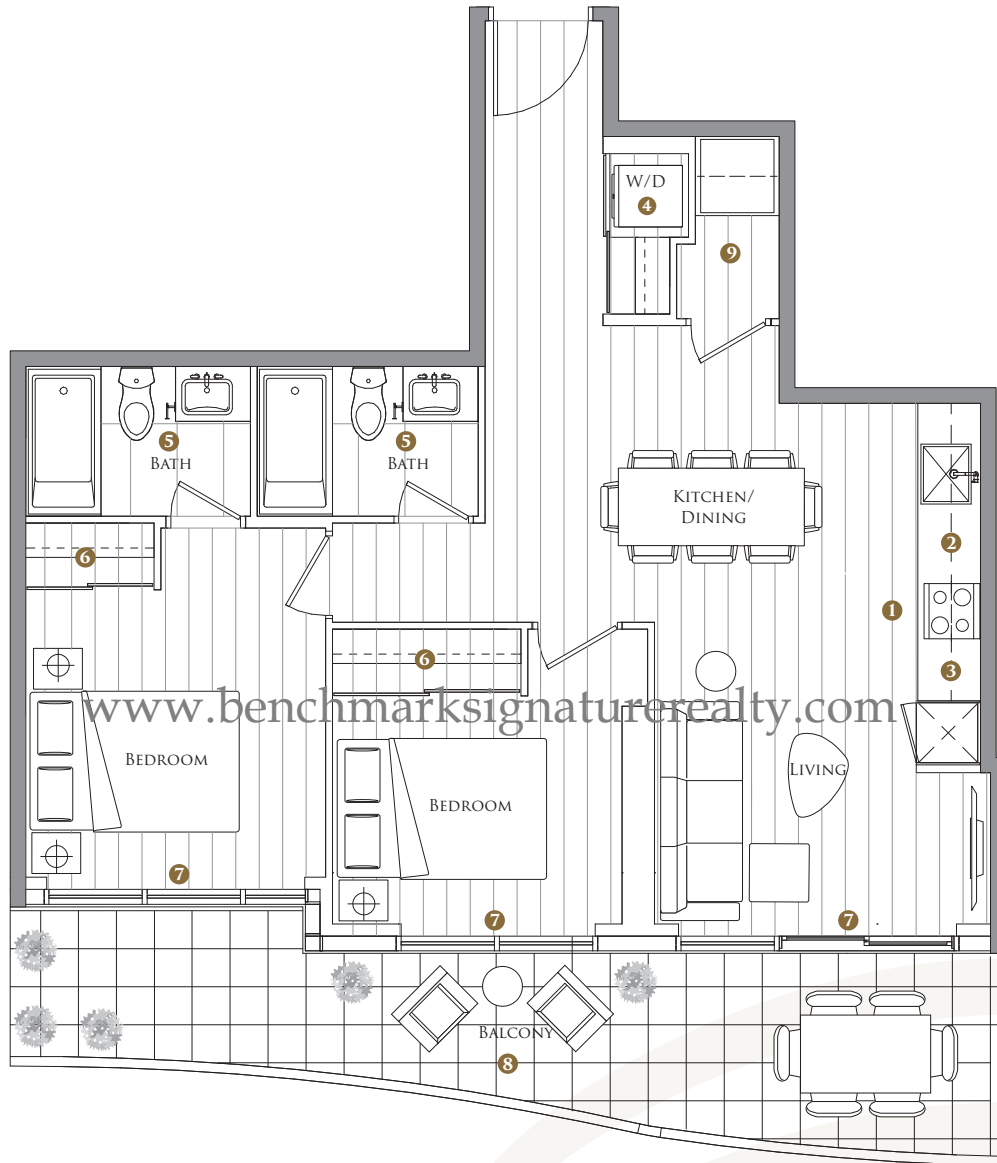


## FEATURE HIGHLIGHTS

- 1 MIELE APPLIANCES
- 2 KITCHEN STORAGE ORGANIZER
- 3 BLUM KITCHEN HARDWARE
- 4 MIELE WASHER/DRYER
- 5 KOHLER/GROHE BATHROOM PLUMBING FIXTURES
- 6 CLOSET ORGANIZER SYSTEM
- 7 ROLLER - SHADES
- 8 COMPOSITE WOOD DECKING
- 9 WINE CELLAR

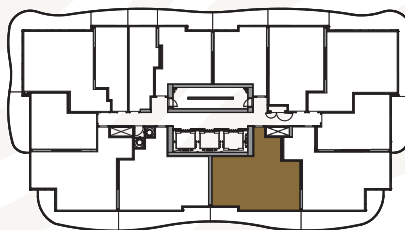
The developer reserves the right to make minor revisions to interior wall locations and exterior window system. All materials and drawings are approximate. Information is subject to change without notice. Actual square footage may vary from the stated floorplan. Furniture and upgrades shown on plans are for illustration purposes only and are not included. E.&O.E.

# KING'S LANDING



## SUITE 16 TWO BEDROOMS

TOTAL AREA 982 SQ.FT.	
800 SQ.FT. INDOOR AREA	182 SQ.FT. OUTDOOR AREA

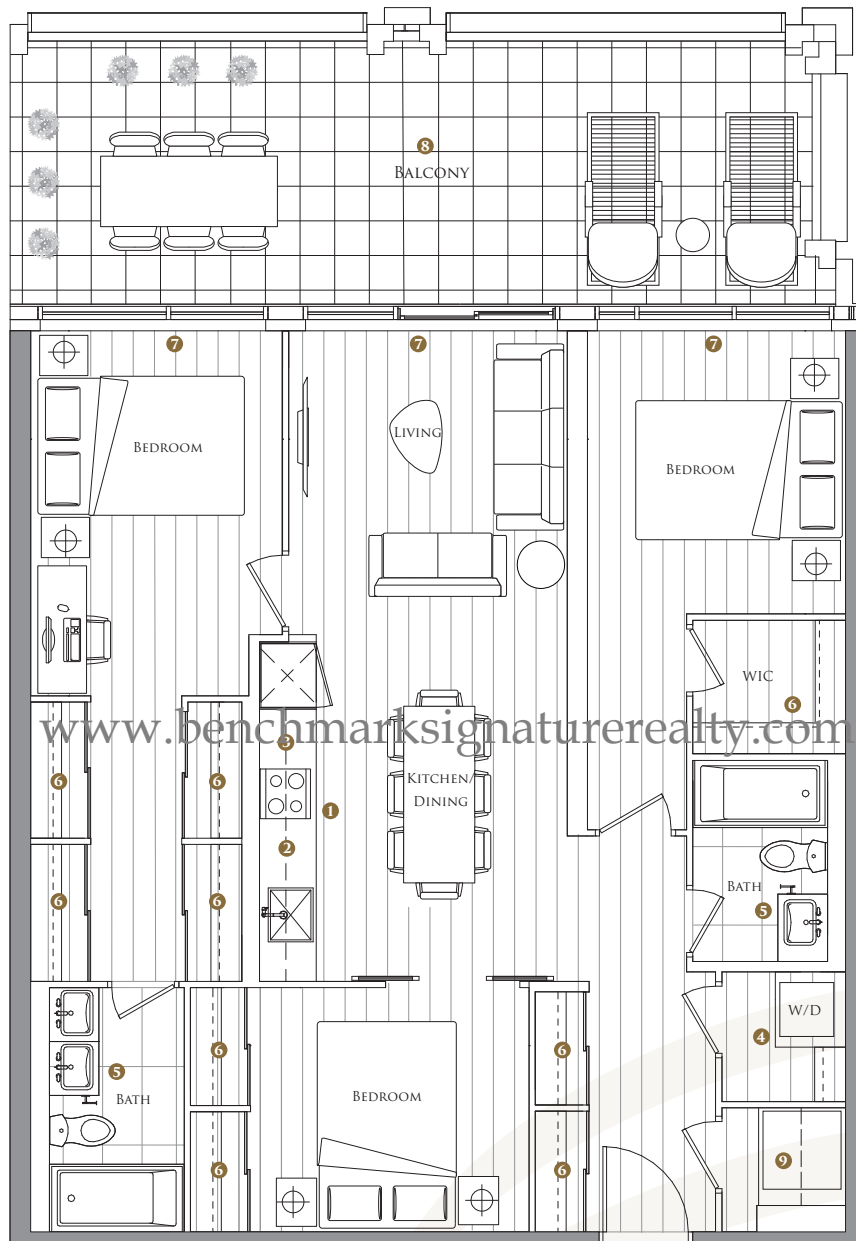


### FEATURE HIGHLIGHTS

- 1 MIELE APPLIANCES
- 2 KITCHEN STORAGE ORGANIZER
- 3 BLUM KITCHEN HARDWARE
- 4 MIELE WASHER/DRYER
- 5 KOHLER/GROHE BATHROOM PLUMBING FIXTURES
- 6 CLOSET ORGANIZER SYSTEM
- 7 ROLLER - SHADES
- 8 COMPOSITE WOOD DECKING
- 9 WINE CELLAR

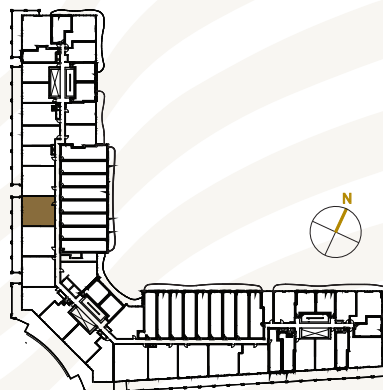
The developer reserves the right to make minor revisions to interior wall locations and exterior window system. All materials and drawings are approximate. Information is subject to change without notice. Actual square footage may vary from the stated floorplan. Furniture and upgrades shown on plans are for illustration purposes only and are not included. E.&O.E.

# KING'S LANDING



## SUITE 318 THREE BEDROOMS

TOTAL AREA 1348 SQ.FT.	
1092 SQ.FT. INDOOR AREA	256 SQ.FT. OUTDOOR AREA



## FEATURE HIGHLIGHTS

- 1 MIELE APPLIANCES
- 2 KITCHEN STORAGE ORGANIZER
- 3 BLUM KITCHEN HARDWARE
- 4 MIELE WASHER/DRYER
- 5 KOHLER/GROHE BATHROOM PLUMBING FIXTURES
- 6 CLOSET ORGANIZER SYSTEM
- 7 ROLLER - SHADES
- 8 COMPOSITE WOOD DECKING
- 9 WINE CELLAR

The developer reserves the right to make minor revisions to interior wall locations and exterior window system. All materials and drawings are approximate. Information is subject to change without notice. Actual square footage may vary from the stated floorplan. Furniture and upgrades shown on plans are for illustration purposes only and are not included. E.&O.E.

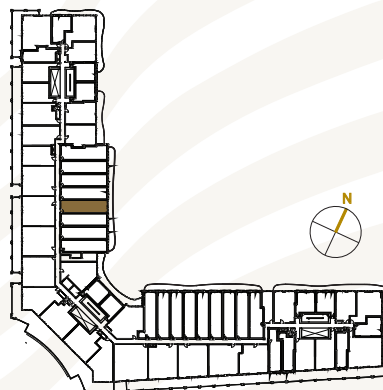


# KING'S LANDING



## SUITE 340 ONE BEDROOM + DEN

TOTAL AREA 727 SQ.FT.	
665 SQ.FT. INDOOR AREA	62 SQ.FT. OUTDOOR AREA



### FEATURE HIGHLIGHTS

- 1 MIELE APPLIANCES
- 2 KITCHEN STORAGE ORGANIZER
- 3 BLUM KITCHEN HARDWARE
- 4 MIELE WASHER/DRYER
- 5 KOHLER/GROHE BATHROOM PLUMBING FIXTURES
- 6 CLOSET ORGANIZER SYSTEM
- 7 ROLLER - SHADES
- 8 COMPOSITE WOOD DECKING
- 9 WINE CELLAR

The developer reserves the right to make minor revisions to interior wall locations and exterior window system. All materials and drawings are approximate. Information is subject to change without notice. Actual square footage may vary from the stated floorplan. Furniture and upgrades shown on plans are for illustration purposes only and are not included. E.&O.E.



## FEATURES & FINISHES

### INTERIOR AND EXTERIOR FEATURES:

- CURVED ARCHITECTURE WITH OVERSIZED BALCONIES
- CHOICE OF THREE INTERIOR COLOUR SCHEMES
- INTERIOR SUITE AND CLOSET DOORS ARE TRIMMED WITH WOOD-GRAIN LAMINATE FINISH
- ROLLER-SHADE WINDOW COVERINGS
- TELEVISION AND TELEPHONE JACKS IN EVERY PRINCIPAL ROOM
- CENTRAL HEATING AND COOLING
- SMART THERMOSTAT
- WIDE-PLANK LAMINATE FLOORING THROUGHOUT THE MAIN LIVING AREA, BEDROOMS, DEN, AND CLOSETS
- PORCELAIN TILE FLOORING IN THE LAUNDRY CLOSET
- BUILT-IN CLOSET ORGANIZATION SYSTEMS
- SELECTED SUITES TO HAVE IN-SUITE WINE CELLAR
- 9' CEILINGS \*

### BALCONY (OUTDOOR LIVING ROOM) FEATURES:

- COMPOSITE WOOD DECKING
- SELECTED TERRACES TO HAVE INDIVIDUAL GAS FIREPLACE

### BATHROOM:

- CUSTOM MEDICINE CABINET WITH MIRROR, SHELVES AND BUILT-IN LIGHTING
- WOOD-GRAIN LAMINATE VANITY CABINET WITH SOFT-CLOSE HARDWARE FEATURING BLUM® HINGES AND TRACKS
- ENGINEERED QUARTZ STONE COUNTERTOP
- KOHLER UNDER-MOUNT SINK WITH POLISHED CHROME GROHE FAUCET
- DUAL-FLUSH TOILET WITH SOFT-CLOSE SEAT
- RECESSED POT LIGHTING
- LARGE-FORMAT CALACATTA PORCELAIN WALL TILE AND TUB/SHOWER SURROUND
- POLISHED CHROME GROHE FAUCET, TUB SPOUT AND SHOWERHEAD
- WALK-IN SHOWER STALL (WHERE APPLICABLE) PARTIALLY ENCLOSED WITH FRAMELESS GLASS WITH DOOR

### KITCHEN:

- CUSTOM WOOD-GRAIN LAMINATE CABINETRY
- UNDER-CABINET LIGHTING
- CABINETS INCLUDE SOFT-CLOSE HARDWARE FEATURING BLUM® HINGES AND TRACKS, A MAGIC CORNER (WHERE APPLICABLE) AND A SLIDING BASKET UNDER THE KITCHEN SINK
- DRAWER ORGANIZERS FOR CUTLERY
- ENGINEERED QUARTZ STONE COUNTERTOP
- LARGE-FORMAT CALACATTA PORCELAIN TILE BACKSPLASH
- TRACK OR POT LIGHTING (DEPENDING ON KITCHEN CONFIGURATION)
- SINGLE-BOWL STAINLESS STEEL UNDER-MOUNT SINK
- POLISHED CHROME GROHE FAUCET WITH LEVER HANDLE AND PULL-DOWN SPRAYER

### APPLIANCE PACKAGE:

#### INTERIOR KITCHEN WITH INTEGRATED PANEL

- MIELE HOOD FAN \*\*
- MIELE DISHWASHER WITH INTEGRATED PANEL \*\*
- MIELE GAS COOK-TOP
- MIELE CONVECTION OVEN
- MIELE STACKABLE FRONT LOAD WASHER AND DRYER
- PANASONIC MICROWAVE OVEN WITH STAINLESS STEEL TRIM KIT \*\*

\* 9' CEILINGS IN PRINCIPAL LIVING AREAS. DROP CEILINGS WHERE REQUIRED.

\*\* DEPENDING ON KITCHEN CONFIGURATION, DISHWASHER AND MICROWAVE/HOOD FAN MAY BE SUBSTITUTED WITH OTHER MANUFACTURER.