



Features

- Affordable
- Single point temperature measurement
- 270° LCD display
- Built in high-resolution color 2.8" LCD
- Laser pointer

Applications

- Electrical inspections
- Mechanical surveys
- Building inspections
- Flat roof surveys
- Process equipment monitoring
- Research & development
- Medical & veterinary imaging

ICI Frozen F S1= 81.9
 ICI Frozen F S1= 85.9
 ICI Frozen F

e=0.90 76 96
 e=0.96 75 105
 e=0.96 86 113

Above Images from left to right: Studs in Wall, Outside of House, and Circuit Breaker

The ToughCam EL Scientific portable thermal imager offers outstanding image quality & temperature measurement performance in an affordable, rugged & easy to use infrared camera.



LWIR Long Wave
 ICI Reporter Software Included
 1 Year Warranty
 160 x 120 Resolution



ToughCam EL S



ToughCam EL Scientific

Performance

Detector	Microbolometer 160 X 120
Accuracy	±2°C or ±2% of reading, Whichever is greater
Thermal Sensitivity	0.12°C @ 30°C
Spectral Range	7.2 -13.5 μm
Field of View	12° x 9°
Spatial resolution (IFOV)	1.3 mrad
Minimum focus distance	0.3m
Temperature Range	-20°C to +350°C (-4°F to + 662°F)
Temperature Units	C, F or K

Outputs

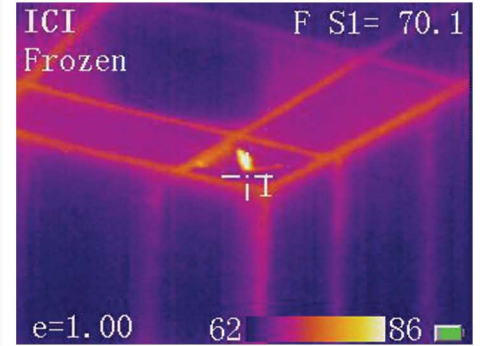
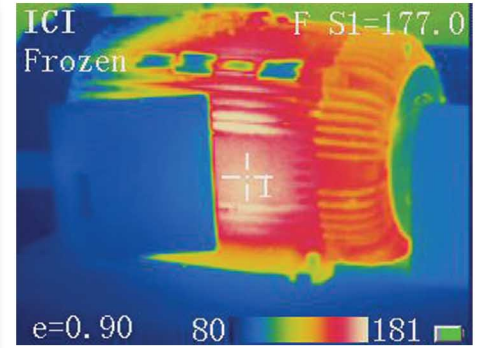
Image Frequency	50Hz
Image Display	High resolution color 2.8" LCD
Laser Pointer	Class 2, 1mw / 635nm red
Interfaces	USB - Image, measurement data transfer, component video output

Power

Power	10~14 V - Power supply provided
Battery	Rechargeable li-ion, 3 hours continuous operation

Environmental / Mechanical

Operating Temperature	-15°C to +50°C (-5°F to 122°F)
Storage Temperature	-25°C to +60°C (-13°F to 140°F)
Environmental Protection	IP 54
Size	10.6" x 3.9" x 2.95"
Weight	1.3 lb.s (including battery and lens)
Palettes	3 palettes including color and blk and white
Tripod Mount	Standard 1/4"-20



©2010 Infrared Cameras Inc. All Rights Reserved

1. ICI Reporter gives a user the ability to overlay thermal images on a visible light image. Reporter can measure any point or area on this image using a point, line or area measurement feature.

2. ICI Reporter also provides a 3 dimensional profile of the thermal image.

3. ICI Reporter allows for to view temperatures across an area with up to 10 line profiles.

4. Temperature values are immediately dropped into a result table when the user places a measurement point or area on the thermal image.

5. Your final report is easily exported to a word document.

Picture info	Value
Created date	2009-01-15
Created time	06:30:36
Spot	Value
Point01Temp	113.1°F
Point02Temp	110.8°F
Line	Value
Line01Max	112.3°F
Line01Min	102.5°F
Line01Averag	106.3°F

Accuracy

This ergonomically designed infrared camera is based on an uncooled microbolometer core that provides crisp imagery and accurate temperature measurements. Adjustable emissivity input and ambient temperature compensation insures accurate temperature readings.

Long life battery

A long life rechargeable Lithium-ion battery pack operates the camera up to three hours.

Laser pointer

There is a built in laser pointer that facilitates identification of the equipment under inspection.

Temperature measurement

The ToughCam EL Scientific uses a single point temperature measurement.

Standard Accessories

These include a heavy duty carrying case with shoulder strap, two batteries (Li-Ion, rechargeable), battery charger, lens cap, and adumbral cover. The ToughCam EL also comes standard with professional analysis software (IR Reporter).

Visit us online: <http://www.InfraredCamerasInc.com>
1(866)861-0788 USA 1(409)861-0788 Intl

Above: ICI Reporter Sample Overlay Image with Temperature Measurement, 3D Profile, and Line Profile