

Bait Tank Clean Out System Operation Manual

Piedmont Composites & Tooling has developed a de-clogging system for our bait tank line that will help get your system circulating water in the rare occurrence that the electric pump impeller becomes stuck or clogged with debris. Essentially, it is a reverse flow system that will clear obstructions from within the pipe or stuck in the impeller.

Important

- PCT recommends removing bait and draining the tank before attempting to de-clog the bait tank, however this is not required.
- Never stick or force anything into the pump.
- Always unplug the system from the power source before doing any work on the bait tank or the system including but not limited, to the electrical pump and ChillerMAX if installed.
- Never open or disassemble the electrical pump.
- Be careful when threading plugs and hose not to misalign, strip, or overtighten.
- Not following any of the above directions will void your warranty.
- Call 828-632-8883 for technical service if the issue cannot be resolved.

Parts included in the system (see Figure 1):

1. Screw plug (1) – To shut off one side of the spray bar.
2. Garden hose adapter (1) – To be attached on the spray bar opposite of the screw plug.
3. Screw plug with extended handle (1) – To be attached to the drain inside the bottom of the tank leading to pump.

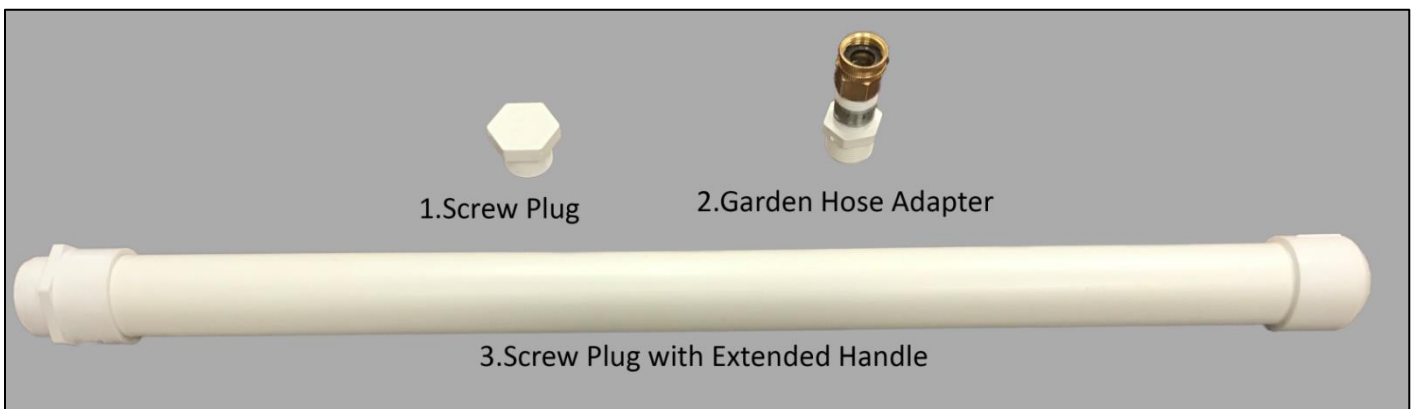


Figure 1 – Components included

Bait Tank Clean Out System Operation Manual

Items needed that are not provided by PCT:

1. Five-gallon bucket(s) – To catch water and obstructing material.
2. Standard garden hose
3. White Plumbers tape, not required

Instructions:

1. Turn system off and unplug from power source.
2. Remove all perforated grates, filter media pads, carbon bags, and drain screen leading to the pump drain in the bottom of the tank. See Figure 2.
3. Remove both ends of the spray bar (located at the top of the tank) by turning the bar in a counter clockwise direction. See Figure 2.



Figure 2 – removing the spray bars and the filter components including the drain screen.

Bait Tank Clean Out System Operation Manual

4. Carefully attach the screw plug with extended handle into the drain inside the tank and attach the screw plug and the garden hose adapter to opposite ends of the spray bar using a clockwise motion until a good seal is made. Do not over-tighten. See Figure 3.

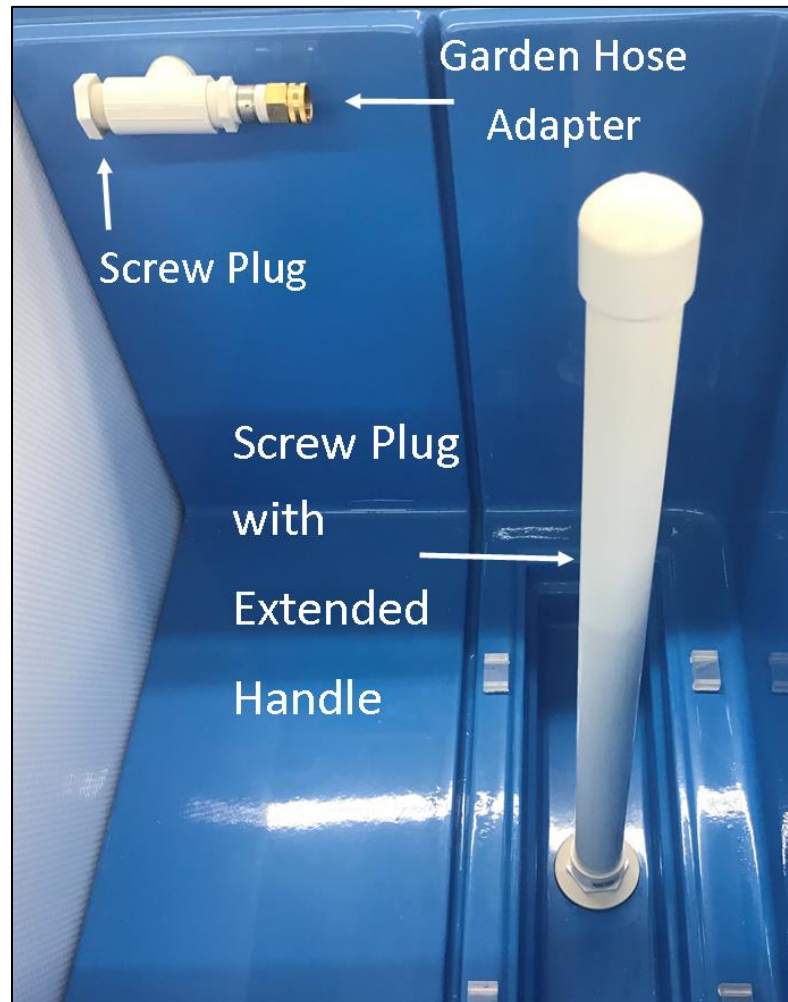


Figure 3 – image of the components installed.

5. Attach the garden hose (not provided) to the adapter that is attached to the spray bar.
6. Place five-gallon bucket or other at end of the drain pipe underneath tank to catch water and debris.
7. Open drain valve to allow the water to flow through the piping and pump system. See Figure 4.

Bait Tank Clean Out System Operation Manual

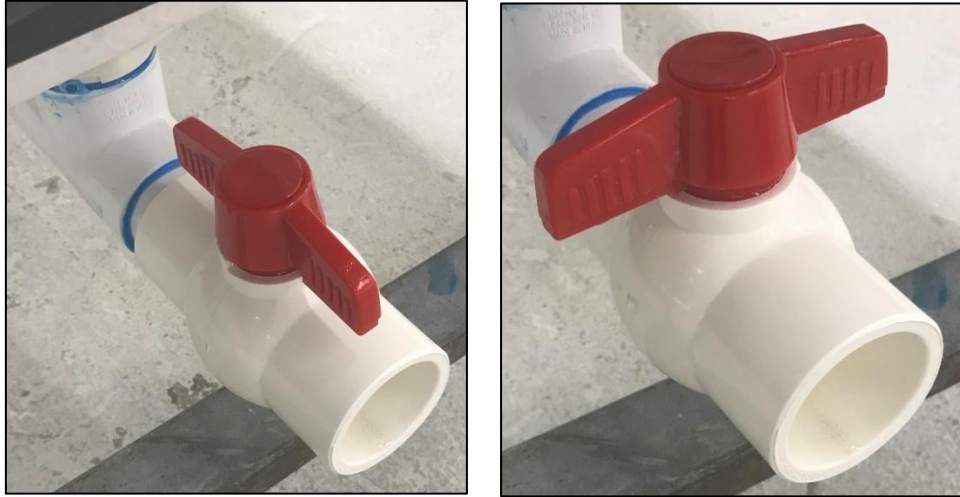


Figure 4 – Drain Valve Open Figure 5 – Drain Valve Closed

8. Turn on the water source to the garden hose.
9. When the obstruction is removed, close the drain valve, see Figure 5. The drain pipe valve may need to be closed and the procedure repeated several times to fully clear the obstruction.
10. Turn off the water pressure at the water source.
11. Remove the screw plug with extended handle from the drain inside the tank using a counter clockwise motion and replace the perforated grates, carbon bag, filter media pads, and drain screen be certain all filter components are re-installed properly. See the FilterMax operation manual for instructions.
12. Remove garden hose adapter and screw plug in a counter clock wise motion
13. Replace spray bars in a clockwise motion, until a good seal is made. Be careful not to overtighten
14. Place white plumbers tape on the treads of the spray bars to prevent leaking.
15. Plug the system into the power source and start the system.

If this procedure does not solve the issue, please call us at 828-632-8883 for assistance.

Thank you for purchasing a Piedmont Composites & Tooling bait tank!