



The Bible Students Retirement Center

Fairview, OR • FALL 2020

Chairman's Message

The middle of 2020 has shown to be a highly active period for the BSRC Residents and Staff. Several projects are occurring on our premises. Covid-19 continues as a pandemic. We are thankful to report that none of our Residents or Staff have become ill from an infection of Covid-19.

We are saddened by the loss of Sr's. Ollie Grigalunas and Judith Black who passed away this year. Sr. Ollie brought her smile and cheerfulness to many of us throughout her tenancy and Sr. Judith was a joy to have in your presence. After Sr. Judith's passing, Br. Jerry Black has been traveling and has now made his home base with his daughter and son-in-law. In September our Sr. Evelyn Klis, who has been one of our Residents since August of 2012, agreed with her family in the Chicago area to move near them knowing she will need more help with daily activities. These dear ones will be greatly missed.

We welcome the return to the Board after a year's absence of Sr. Sandy Koterba, who again accepted service as the corporate Secretary. And we additionally welcome first time Resident Advisor, Br. Russ Wojcik.

This year has been active for both construction and maintenance at the BSRC. The new elevator has been the

major project. We also needed new roofs on Buildings A and B, which were last re-roofed in 2001. It was a big job because two layers of shingles had to be removed and much of the plywood under those shingles had to be replaced with new. The decision was also made to re-roof the 3-car garage building, which had its original roof from when it was built in 1987. Additionally, the Main House roof is currently having new gutters installed as well as major repairs to the fascia.

As always, we give the glory to our Heavenly Father for allowing the successful continuation of the BSRC through these most difficult of economic and political times. We are reminded of our confidence in Him as we read Psalm 127:1, "Except the Lord build the house, they labor in vain that build it" Psalm 127:1

Br. Michael Costelli

Board Chairman and Planning & Construction Chair



🌸🌸🌸🌸🌸🌸 "This Just In..." 🌸🌸🌸🌸🌸🌸

Get ready to strike up the BSRC Band Pipe Organ; our NEW Elevator is near complete!

After two years, many prayers and hard work by the Board the Lord's providence prevailed. The Lord's hand in this project was visible every step of the way.

The "hoistway" that houses the elevator is a stunning addition to the end of "F" Building. It's constructed

of a beautiful architectural block that looks like chiseled stone. Its doors will open to the covered walkway on both levels. It will operate very smoothly and quietly. You'll simply push a button and be guided to your destination by indicator lights with audible and visual signals. With convenience and safety our main concern, the elevator is equipped with an emergency stop and alarm button, emergency in-cab lighting and an ADA emergency "hands free" monitored phone system. The elevator

cab is 42" x 60" with a weight limit of 1,400 lbs. which means it can also carry furniture.

The best part of this new elevator is that it takes you effortlessly up to the second level of both "C & F Buildings" providing the best view from anywhere on campus. The view overlooking the courtyard when the flowers are in bloom is priceless. We are truly blessed. Come and experience it for yourself."

2020-2021 Board of Directors

BSRC - Oasis in the Northwest Storms

Br. Michael Costelli
Chairman
Gulfport, MS
(228) 861-2822
mrcostelli@gmail.com

Sr. Sandra Koterba
Secretary
Gloversville, NY
(917) 554-2348
sandykoterba@gmail.com

Br. Doug Rawson
Treasurer
San Jose, CA
(408) 644-7668
doug.rawson7@gmail.com

Br. Kome Ajise
Sacramento, CA
(916) 813-3948
Kome.ajise@gmail.com

Br. Ed Heidelberg
Farmington Hills, MI
(248) 767-8887
edh1874@gmail.com

Sr. Nannette Nekora
Pacific Palisades, CA
(310) 454-5248
npnekora@aol.com

Sr. Dawn Shallieu
Watchung, NJ
(908) 756-4954
dshallieu@aol.com

Sr. Tami Wesol
Albuquerque, NM
(505) 344-4784
ttwesol@comcast.net

Resident Director
Sr. Janet Wojcik
Fairview, OR
(503) 459-2720
janetwojcik@gmail.com

Resident Advisors
Sr. Ellie Rozmus
Fairview, OR
(503) 863-7893
werozmus@gmail.com

Br. Russell Wojcik
Fairview, OR
(213) 385-1266
rnjwojcik@yahoo.com

"And God is able to make all grace abound to you;
that always having all sufficiency in everything, you may have an
abundance for every good deed" -- 2 Cor 9:8

In the last few months, the entire nation, indeed the whole world, has been visited with the most turbulent of times experienced in a generation. We don't need to be reminded of the global pandemic, the economic recession resulting from the pandemic and social unrest from the reckoning about racial injustices in the US. Like the rest of the country, the beautiful lush Northwest, where the BSRC sits, not only had to deal with these three significant impactful events, but also was ablaze with some of the worst wildfires in the region's history. These fires were so large they made people sick across the Midwest.



Watching the news from outside of the Portland area, there were concerns about the effects of the unrest and fires on the brethren at the Center. The truth of course is that there has been very little impact at all from any of these unsettling events. The protests are many miles away in downtown Portland and the closest of the fires, the **Riverside Fire** (now over 70% contained), were more than 30 miles to the south of the Center and were not a threat at all. We trust the Lord's overruling on behalf of our brethren makes it an oasis in the middle of the turmoil we are seeing from afar.

Brethren, we are truly thankful for the Heavenly Father's favors on several counts because as we hit the 8th month of dealing with the pandemic, life at the Center has adjusted very well to the necessary precautions to keep everyone safe and healthy. Fellowship activities including sit down meals continue to be encouraged within prescribed public health guidelines. In addition, the Center has been bustling in the last few months with some significant economic activities including the replacement of the roofs on some of the buildings as well as the construction of a full-service elevator between the C and F buildings. The BSRC has thus been a little oasis of economic boost to the region as well.

We continue to ask for your prayers on behalf of all at the BSRC, but we also ask that you become members to be part of the stewardship of this blessed community. You might even consider the Center as an option for your retirement residence. With the soon to be completed elevator project, the units available on the second floor will be ideal perches in this favored community!

Br. Kome Ajise
Marketing Chair

A Helping Hand

We know many brethren are on fixed, limited incomes, but the Lord provides for His own. Due to the generosity of others, special arrangements are available for brethren with limited income and assets. Qualifying residents pay 20% of their income towards their rental payment. Only certain studio units are available under the subsidy program for a single brother or sister. The studio unit that we currently have available is one of those units. (Contact the Admissions chair if you are a couple on a very limited income concerning the

qualifications, and to find out which units qualify for a reduced rent.)

For example, a brother or sister with a monthly income of \$1,000 could rent our studio unit at a cost to them of \$200/month (20% of \$1,000).

If you are interested in applying for a subsidy, or would like to know the qualifications, please contact the Admissions chair at 908-756-4954 or dshallieu@aol.com. All inquiries are held in strictest confidence.

Available for Immediate Occupancy!

We are excited to tell all of you that we have a studio unit available. This, the smallest of our unit styles and the least expensive, hasn't been available for some time. Another plus: It is on the first floor. The 500 sq. ft. unfurnished unit is compact but has an open floor plan. It has a fully functional kitchen and a private, full bath with a walk-in shower. The bedroom area has a double closet. The front door opens to the courtyard and is a short pleasant walk to the Main House for lunch, meetings, and fellowship. The back door opens to a sidewalk next to the driveway. It also comes with a separate small storage area for items, such as suitcases, patio chairs, etc. This unit has access to a washer and dryer on the same level, which is shared with 2 other units. The price? **Only \$382/month**, plus \$5/month laundry room usage fee.

Another benefit of this unit, it qualifies for a reduced rent depending on your financial situation. See the article "A Helping Hand."

The BSRC is a gated community. Our units are perfect for independent living. This unit is near the courtyard

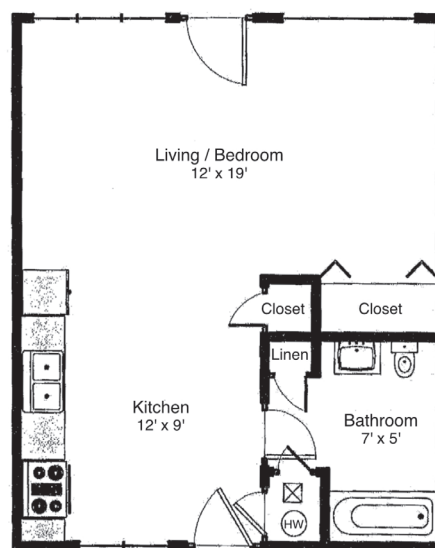


where outdoor activities are held in the Spring, Summer and Fall, such as picnics, ice cream socials, and barbeques. The Main House is normally the center of activity. Because of the pandemic, we have had to move our five studies a week, hymn singing, and even some of our holiday events to Zoom. We look forward to the time when we can resume those activities face-to-face."

If you are considering a move to the Center, either in the near or long term, we would like to invite you to come for a FREE one or two-week trial visit. The purpose of this visit is for you to get a good feel of what life is like at the Center, to try out a unit and see if this move is right for you. The lodging during the trial visit will be at no cost to you. Also, we will include a free noon meal in the Main House dining room, on the days that it is served, during your stay.

**For more information
or to schedule a visit,**

Contact the Admissions Chair at 908-756-4954
or dshallieu@aol.com



Call us with your questions & comments • BSRC • 503-661-7045

"Precious in the sight of the Lord is the death of his saints." Psalm 116:13-15

Sr. Ollie Grigalunus



Olive Florence Gurton was born on 10/19/1921 in Hadleigh, Essex, England. Her parents instilled a love for the Lord from an early age. Dissatisfied with the churches of their day they started their own Bible study group. Their house was called "Shammah" (The Lord is There - Ezekiel 48:35). "Ollie" worked as a dressmaker to the English court and an au pair to a family related to Emperor Napoleon. She met Leon

Grigalunus in 1944 at a USO Dance. They were married three months later. In 1946 they settled in LaSalle, IL and her mother-in-law, Joanna Grigalunus, told her that she had to come to the meeting to meet the family. They were Lithuanian and the family had formed an ecclesia in LaSalle. Ollie loved the idea of finding out about God—the study of the Tabernacle opened the scriptures to her. In 1950 at the Bowling Green convention, Leon and she symbolized their consecrations, and the foundation for a life together in the Lord was laid. Eventually, Leon & Ollie joined the Chicago class and Sr. Ollie became active in "obituary" work, sending messages of comfort to the bereaved. She would always read the Reprints to her children at home; taught Bible classes and set an example to those who knew her. Br. Leon died in 1999. In 2005, Sr. Ollie and her daughter Sr. Chris moved to the BSRC. Ollie continued her obituary work. Until 2020, Sr. Ollie was still reading the Reprints and the volumes annually. Her favorite speakers were always available on MP3 at bedtime. She retained her cognition throughout her walk until finishing her course on September 21.

Sr. Judith Black



Sr. Judith Black finished her course on June 12, 2020 after living at the BSRC for close to three and a half years. Although she lived at the Center for a short period of time, she was a supporter of it from its inception. She and her family dedicated their time and talents to the BSRC in many capacities throughout the years. Sr. Judith often visited the residents at the Center, ran many errands for them, and was also on the Board of Directors of the BSRC.

Sr. Judith leaves behind her loving husband of 55 years, Br. Jerry Black, her children Br. Jeff, Jane, and Br. James, their spouses, her four grandchildren, and six siblings including Sr. Joan Kilgore. Her parents, Br. Clayton and Sr. Mary Langsev were longtime members of the Associated Bible Students of Portland and Br. Clayton had also been a resident at the BSRC the last few years of his life.

On November 6, 1976, Sr. Judith and Br. Jerry symbolized their consecration at a Portland Convention. From that point on, seeking after the Heavenly Father and His Son Jesus Christ became Judith's top priority. She loved to witness and never stopped sharing the beautiful plan of God with anyone who would listen or had questions. Sr. Judith was an example of love, generosity, integrity, compassion, gentleness, teaching, and nurturing. Her presence will be missed by all at the BSRC.

Other Available Units

Two Bedroom/One Full Bath \$746 per month

- 1,090 sq. ft. unfurnished
- Upper Level – Private Balcony w/ great view
- Open Concept Living/Dining Room with vaulted ceiling
- Laundry room
- Accessible via elevator or stairs

One Bedroom plus Sitting Room One Full & One Half Bath/\$762 per month

- 1,000 sq. ft. unfurnished – First Floor
- Multiple closets provide ample storage
- Washer & Dryer hook-ups in half bath
- Front & back doors
- Small patio area

🕊️ "UNDER HIS WINGS" 🕊️

We have had some challenges lately. Two Brethren have finished their course, Sr. Ollie Grigalunus and Sr. Judith Black. This is always bittersweet. We have also experienced two of our wonderful residents move away from the center, Br. Jerry Black and Sr. Evelyn Klis.

The Center continues to be blessed with socially distanced fellowship activities, along with the ever popular "Zoom" meetings, and conventions. The array of conventions that are available on "Zoom," like other online activities, are broadcast to the BSRC Residents via local insert cable television.

We look forward to the holiday season and are planning some wonderful pandemic appropriate activities in the coming months. We are snug in our enclave and the Lord has His arms around our community as always. We thank the Lord for His many blessings and we can say, "All is well here."

Sr. Janet Wojcik, Resident Director