



# KANSAS CITY COMMERCIAL REAL ESTATE EXPO

## PRODUCING ORGANIZATIONS

AAKC

APARTMENT ASSOCIATION  
OF KANSAS CITY



Kansas City  
Chapter

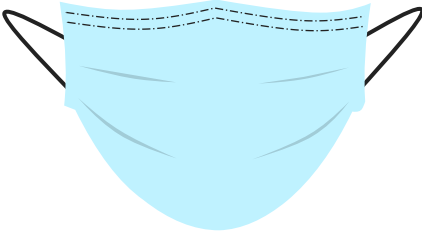


# Post on social media #KCEXPO2021

# Hand sanitizer available!



# Please wear a mask.



# Photo Area & Game Entry



**BAR** **FOOD** **BAR**

243	245	249	251	255
-----	-----	-----	-----	-----

242	244	248	250	254
143	145	149	151	155

142	144	148	150	154
-----	-----	-----	-----	-----

**BAR** **BAR**

217	219	221	223	225	227	231	233	235	237	239
-----	-----	-----	-----	-----	-----	-----	-----	-----	-----	-----

216	218	220	222	224	226	230	232	234	236	238
117	119	121	123	125	127	131	133	135	137	139

116	118	120	122	124	126	130	132	134	136	138
-----	-----	-----	-----	-----	-----	-----	-----	-----	-----	-----

**BAR** **BAR**

**BAR** **BAR** **BAR**

201	203	205	207	209	211
-----	-----	-----	-----	-----	-----

200	202	204	206	208	210
101	103	105	107	109	111

100	102	104	106	108	110
-----	-----	-----	-----	-----	-----

**BAR** **BAR**

IN & OUT

# F O R P L A N

#	EXHIBITING COMPANY (alphabetical)		
		100	Kansas Asphalt
126	A Arnold of Kansas City	118	KC Restoration
133	AAKC	235	KONE
105	Ambius	219	LED Direct
238	ARCO	230	Lexington Plumbing
124	AVI Systems	200	Martz Bros. Snow Management
111	BELFOR	153	McConnell & Associates
243	BluSky Restoration	233	McQueeny Group
131	BOMA Kansas City	207	Meridian Roofing
223	BrightView	121	Mid America Specialty Services
117	Brummel Lawn & Landscape	221	Midwest Duct Cleaners
119	BV Strategic Solutions	120	Midwest Elevator
102	C&M Restoration	208	MTS Contracting
210	CertaPro Painters of Shawnee Mission	104	Nifty Promotions
107	City Wide Facility Solutions	142	PACT Construction
135	Commercial Concrete Solutions	122	Paradise Asphalt Maintenance
203	Complete Property Solutions	154	Phoenix Restoration
149	Control Installations	242	Preferred Asphalt & Concrete
248	Country Financial	218	Pro Electric
139	Delta Innovative Services	127	Producing Organizations
217	Design Mechanical	225	PropertyTRAK
255	Devine Janitorial	155	Pur O Zone
253	Duct Doctor	227	Q4 Industries
108	Echo GPR	234	Rainbow International
216	EMCOR Services Fagan	125	Rubbermaid Commercial
222	Emerson Enterprises	138	Seasonal Solutions
245	éPlus Environmental Solutions	239	ServiceMaster DSI
136	Essity North America Inc.	211	SERVPRO of Olathe/ Lenexa
252	Evergy	101	SG360
236	Facility Systems Inc.	123	Siemens
201	Flynn Roofing & Glazing	116	Signature Landscape
137	Global Response Team	144	Stanger Industries
206	Heartland Drone Company	134	Taycon TMI
143	Hermes Landscaping	103	The Flying Locksmiths
231	Hi-Gené's Janitorial	106	Titan Monitoring
145	Home Depot Pro	249	TK Elevators
205	Hudson Home Protection	202	True Moss Interior Landscapes
132	IFMA Kansas City	244	True North Outdoor
130	IREM Kansas City	204	US Engineering
152	ISS Facility Services	220	VDA Elevator Consulting
232	Johnson Controls	209	Veritiv
254	JR & CO.	148	Voss Lighting
237	K & G Striping	224/226	Western Specialty Contractors
109	K&E Flatwork	110	ZIPCO

# EXHIBITORS



# PRIZE DRAWINGS

3:00pm

ENGINEER Drawing for \$100

EXPO Postcard QR Code Drawing for \$100

4:00pm

ENGINEER Drawing for \$100

EXPO Postcard QR Code Drawing for \$100

5:00pm

Best Themed Exhibitor Booth Winner Announced

3 25th Anniversary Game Drawings for \$100

EXPO Postcard QR Code Drawing for \$100

**YOU DON'T HAVE TO  
BE PRESENT TO WIN!**

# PRODUCING ORGANIZATIONS

## AAKC

## BOOTH # 133

### APARTMENT ASSOCIATION OF KANSAS CITY

The Apartment Association of Kansas City was established in 1974 to protect and inspire the multi-family industry through superior education, advocacy and communication. Representing 973 members with over 92,743 units, consisting of apartment property owners, developers, managers and member communities. Also included are 242 Supplier Partners who provide products and services to our industry.

FOR MORE INFO VISIT: [AAKC.US](http://AAKC.US)

---

## ASHRAE KANSAS CITY

## BOOTH # 127

### AMERICAN SOCIETY OF HEATING, REFRIGERATING, AND AIR CONDITIONING ENGINEERS

ASHRAE®, founded in 1894, is an international organization of 51,000 persons. ASHRAE fulfills its mission of advancing heating, ventilation, air conditioning and refrigeration to serve humanity and promote a sustainable world through research, standards writing, publishing and continuing education. This is the Kansas City Chapter of ASHRAE.

FOR MORE INFO VISIT: [KCASHRAE.ORG](http://KCASHRAE.ORG)

---

## BOMA KANSAS CITY

## BOOTH # 131

### BUILDING OWNERS & MANAGERS ASSOCIATION

BOMA KC was established in 1926 as the trade association for the area's office building industry. Membership is comprised of approx. 260 individuals that represent companies who own and manage commercial buildings and facilities in Office, Industrial, and Retail, and vendors and service providers that offer products and services. BOMA KC offers a robust calendar of exciting events, relevant education, and top notch opportunities to build and maintain professional relationships!

FOR MORE INFO VISIT: [BOMAKC.ORG](http://BOMAKC.ORG)

# IFMA KANSAS CITY

# BOOTH # 132

## INTERNATIONAL FACILITY MANAGEMENT ASSOCIATION

Almost 30 years ago, Facility Managers in the Kansas City area needed a resource to share their experiences and learn from each other in managing the built environment so they formed the Kansas City Chapter of IFMA. ifmaKC has more than 200 members that continue to uphold the principles of our founding members, many of whom are still active in the chapter today. Professional, Associate (vendor), Student and Lifetime members are from all industries. We meet each month to discuss trending topics, tour facilities, and learn about new practices.

FOR MORE INFO VISIT: [IFMAKC.ORG](http://IFMAKC.ORG)

---

# IREM KANSAS CITY

# BOOTH # 130

## INSTITUTE OF REAL ESTATE MANAGEMENT

IREM serves real estate professionals who manage multi-family and commercial real estate. IREM offers a variety of membership types for property management professionals at every step in their career. IREM Kansas City is an active Chapter with luncheon meetings, numerous socials and community outreach events throughout the year. We believe in the power of knowledge and the importance of sharing it.

FOR MORE INFO VISIT: [IREMKC.ORG](http://IREMKC.ORG)

---

# KCRAR COMMERCIAL

# BOOTH # 127

## KANSAS CITY REGIONAL ASSOCIATION OF REALTORS-COMMERCIAL

KCRAR COMMERCIAL is one of the largest and most active commercial real estate trade organizations, serving both REALTOR and non-Realtor affiliated commercial brokers throughout the Greater Kansas City area. Focused on education, legislative advocacy, and fostering cooperation and growth, KCRAR COMMERCIAL members are more informed, more involved, and better positioned to serve the needs of their clients and their brokerage community.

FOR MORE INFO VISIT: [KCRAR.COM/KCRARCOMMERCIAL](http://KCRAR.COM/KCRARCOMMERCIAL)

# EXPO COMMITTEE

## CO-CHAIRS:

KATHY CROSSEN | MC REALTY GROUP

JANAE NEZERKA | CERTAPRO PAINTERS OF SHAWNEE MISSION

## COMMITTEE MEMBERS:

TOM CORSO, SMA | MC REALTY GROUP

MICHELLE CORUM | CUSHMAN & WAKEFIELD

KLARK CRITTEN | LANE4 PROPERTY GROUP

JONI CROSS, CPM, RPA | COPAKEN BROOKS

LISA EARLEYWINE, CPM, RPA | BLOCK REAL ESTATE SERVICES

SANDY GAMBLE | BRIGHTVIEW LANDSCAPE

ASHLEY GOULAS | SG 360

BARRY GREGSON, CPM, RPA | THE RMR GROUP

KATIE HANNY | IFMA REPRESENTATIVE

DEBBIE HAUKENBERRY | AAKC REPRESENTATIVE

TIM LIENBENO | A. ARNOLD OF KANSAS CITY

JESSIE MALLICOAT | SIGNATURE LANDSCAPE

VALERIE MUSSETT | DESIGN MECHANICAL

LINDSEY NELSON | CUSHMAN & WAKEFIELD

JIM NOE | ASHRAE KC REPRESENTATIVE

DEREK RAMSAY | KCRAR COMMERCIAL REPRESENTATIVE

DAVE SCHAECHER, AIA | ARCHITECT

CINDY SHELTON | NIFTY PROMOTIONS

MELINDA SISSEL | IREM REPRESENTATIVE

SARABETH STAHL, RPA | CUSHMAN & WAKEFIELD

SARA WILSON | JLL

# EXPO SPONSORS

AIR SANITIZER



BAR



EDUCATION



EDUCATION



EXHIBITOR  
ELECTRICAL



EXHIBITOR MOVE-IN



HAND SANITIZER



HAND SANITIZER



HOSPITALITY SECURITY



**METRO PUBLIC SAFETY  
AND INVESTIGATIONS**