

Twelve Days  
*of* Beauty Faves

# HOLIDAY BEAUTY BOX

## 12 DAY BEAUTY ADVENT CALENDAR

WITH FREE INSIDER BEAUTY TIPS

FOR ALL SKIN AND HAIR TYPES

FEATURING 12 TOP BEAUTY PICKS IN ONE XL GIFT BOX! OPEN 12 WINDOWS TO REVEAL 12 NATIONALLY RECOGNIZED TOP BRAND BEAUTY PRODUCTS RANGING FROM SKIN, LIP, AND NAIL CARE TO HAIR AND BATH ESSENTIALS PLUS MANY MORE.

ITEMS INCLUDED ARE:

Eco Tools Angled Kabuki Brush | Laneige Water Sleeping Mask | NYX Xtreme Lip Cream | Mayfair Soap Foundry Body Cream | Nexxus Comb Through Finishing Mist | Sinful Colors Professional Nail Color | Burts Bees Lip Balm | Tini Me! Mini Ice Cream Bath Bomb Soak | Pacifica Kale Detox Deep Cleaning Face Wash | Laneige Sleeping Mask | Umberto Dry Lifting Powder | Acure Day Cream Gotu Kola Stem Cell + CGF



1

2

6

7

12

Twelve Days  
of Beauty Faves

9

11

4

8

10

3

5



## Twelve Days of Beauty Faves







## Twelve Days of Beauty Faves

Umberto  
Lifting Powder



Laneige  
Water Sleeping Mask



Burt's Bees  
Beeswax Lip Balm



Acure  
Day Cream



Pixi  
Glow Tonic



Tini ME!  
Lavendar Lullaby  
Mini Bath Ice Cream





**NYX**  
Xtreme  
Lip Cream



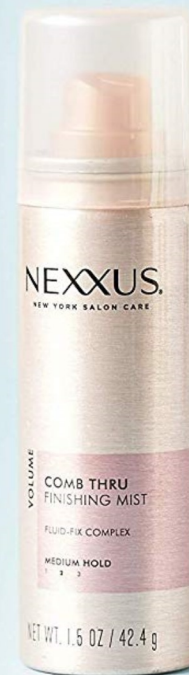
**EcoTools**  
Angled  
Kabuki Brush



**Sinful  
Colors**  
Nail Polish



**Nexxus**  
Comb Through  
Finishing Mist



**Pacifica**  
Kale Detox  
Face Wash



**Mayfair**  
Soap Foundry  
Body Crème





## Find tips & tricks inside from the Target Beauty Concierge.

**MAYFAIR**  
SOAP FOUNDRY

**PIXI** by **petra**

**ECOTOOLS**  
Beautiful You, Beautiful World®

**LANEIGE** **PACIFICA**

**UMBERTO**  
BEVERLY HILLS



**BURT'S BEES**

**NYX**  
PROFESSIONAL  
MAKEUP

**NEXXUS**  
NEW YORK SALON CARE

**SINFULCOLORS**

**ACURE**  
FOR YOUR SKIN | FOR THE PLANET

### Pacifica Kale Detox Deep Cleansing Face Wash

Ingredients: aqua, glycerin, xanthan gum, bentonite clay, kaolin, cocosnucifera (coconut) water, sodium lauryl glucose carboxylate, lauryl glucose, decyl glucoside, sodium cocoyl glutamate, dicaprylyl oleate, brassica oleracea, acephala (kale extract), cramo maritima leaf (blue sea kale) extract, garcinia mangostana (mangosteen) extract, phenoxyethanol, panthenol (vitamin B) tocopheryl, citric acid, parfum (all natural)

### Pixi By Petra Skintreats Glow Tonic

Ingredients: 5% Glycolic, Aloe Vera & Ginseng; Ingredients: Aqua, Aloe Barbadensis Leaf Juice, Hamamelis Virginiana (Witch Hazel) Leaf Extract, Aesculus Hippocastanum (Horse Chestnut) Seed Extract, Glycolic Acid, Ammonium Glycolate, Glycerin, Butylene Glycol, Hexylene Glycol (and) Fructose (and) Glucose (and) Sucrose (and) Urea (and) Dextrin (and) Alanine (and) Glutamic Acid (and) Aspartic Acid (and) Hexyl Nicotinate, Panax Ginseng Root Extract, Phenoxyethanol, Sodium Benzoate, Biotin, Polysorbate 20, Fragrance Gently exfoliates to even out skintone for a brighter, smoother & more glowing complexion. Alcohol free. Hypoallergenic.

### Umberto Beverly Hills Lifting Powder

Ingredients: Silica Silylate, Potato Starch Modified, Tapioca Starch, Panthenol

### SinfulColors Professional Nail Color

Ingredients: Butyl Acetate, Ethyl Acetate, Nitrocellulose, Adipic Acid/Neopentyl Glycol/Trimellitic Anhydride Copolymer, Isopropyl Alcohol, Acetyl Tributyl Citrate, Tosylamide/Epoxy Resin, Bis(Glycidoxyphenyl)propane/Bisaminomethylnorbornane Copolymer, Silica, Polyethylene Terephthalate, Sucrose Benzoate, Calcium Aluminum Borosilicate, Talc, Synthetic Fluorphlogopite, Stearalkonium Bentonite, Calcium Sodium Borosilicate, Acrylates Copolymer, Aluminum Calcium Sodium Silicate, Polybutylene Terephthalate, Polyacrylate-4, Polyvinyl Butyral, Polyurethane-33, n-Butyl Alcohol, Etoxyglycol, EthyleneVA Copolymer, Styrene/Acrylates Copolymer, Diacetone Alcohol, Benzophenone-1, Benzophenone-3, Polyurethane-11, Aluminum Hydroxide, Trimethylpentanediyl Dibenzate, Tocopheryl Acetate, Isobutyl Acetate, Dimethicone, Phosphoric Acid, Trimethylsilylsilicate, Aqua (Water) Eau, Aluminum, May Contain-Mica, Aluminum Powder (CI 77000), Bismuth Oxychloride (CI 77163), Black 2 (CI 77266) [nano], Blue 1 Lake (CI 42090), Carmine (CI 75470), Chromium Hydroxide Green (CI 77289), Chromium Oxide Greens (CI 77288), Ferric Ammonium Ferrocyanide (CI 77510), Ferric Ferrocyanide (CI 77510), Guanine (CI 75170), Iron Oxides (CI 77491, 77492, 77499), Manganese Violet (CI 77472), Red 6 Lake (CI 15850), Red 7 Lake (CI 15850), Red 17 (CI 26100), Red 22 (CI 45380), Red 22 Lake (CI 45380), Red 28 (CI 45410), Red 30 Lake (CI 73360), Red 34 (CI 15880), Red 34 Lake (CI 15880) WARNING: FLAMMABLE—KEEP AWAY FROM HEAT OR FLAME

### Burt's Bees Beeswax Lip Balm Tin

Ingredients: Cera alba (beeswax, cire d'abeille), cocos nucifera (coconut) oil, helianthus annuus (sunflower) seed oil, mentha piperita (peppermint) oil, linalin, tocopherolrosmarinus officinalis (rosemary) leaf extract, glycine soja (soybean) oil, canola oil (huile de colza), limonene

### Laneige Water Sleeping Mask

Ingredients: Water, Butylene Glycol, Cyclopentasiloxane, Glycerin, Cyclohexasiloxane, Trehalose, Sodium Hyaluronate, Oenothera Biennis (Evening Primrose) Root Extract, Prunus Ameriaca (Apricot) Fruit Extract, Beta-Glucan, Chenopodium Quinoa Seed Extract, Ascorbyl Glucoside, Magnesium Sulfate, Zinc Sulfate, Manganese Sulfate, Calcium Chloride, Potassium Alginate, Ammonium Acryloyldimethyltaurate/VP Copolymer, Polysorbate 20, Dimethicone, Dimethiconol, Dimethicone/Vinyl Dimethicone Crosspolymer, Propanediol, Ethylhexylglycerin, Stearyl Behenate, Polyglyceryl-3 Methylglucose Distearate, Hydroxypropyl Bisphosphatide Mica, Inulin Lauryl Carbamate, Alcohol, 1,2-Hexanediol, Caprylyl Glycol, Carbomer, Tromethamine, Disodium

### ME! Bath Mini Ice Cream Bath Soak

Ingredients: Sodium Bicarbonate Citric Acid Sea Salt PEG-160 Sucrose Magnesium Sulfate Glycine Soja (Soybean) Oil Fragrance Maltodextrin Simmondsia Chinensis (Jojoba) Seed Oil Prunus Amygdalus Dulcis (Sweet Almond) Oil Sesamum Indicum (Sesame) Seed Oil Macadamia Integrifolia Seed Oil Helianthus Annuus (Sunflower) Seed Oil Hamamelis Virginiana (Witch Hazel) Extract Red 33 (CI 17200) Blue 1 (CI 42090)

### NYX Xtreme Lip Cream

Ingredients: Ricinus Communis Seed Oil, Polybutene, Pentaerythrityl Tetraisoostearate, Disostearyl Malate, Polyglyceryl-2 Triisostearate, Synthetic Bees Wax, Silica Dimethyl Silylate, Tocopheryl Acetate, BHA, Fragrance, MAY CONTAIN/PEUT CONTENIR (w/r) Mica (CI 77018), Titanium Dioxide (CI 77891), FD&C Yellow No. 5 Al Lake (CI 19140), FD&C Blue No. 1 Al Lake (CI 42090), Iron Oxide Red (CI 77491), Iron Oxide Yellow (CI 77492), Iron Oxide Black (CI 77499), D&C Red No. 6 (CI 15850), D&C Red No. 7 (CI 15850), D&C Red No. 7 Ca Lake (CI 15850), D&C Red No. 28 Al Lake (CI 45410)

### Nexus Comb Thru Finishing Mist

Ingredients: Alcohol Denat., Hydrofluorocarbon 152A, VA/Crotonates/Vinyl Neodecanate Copolymer, Octylacrylamide/Acrylates/Butylaminoethyl Methacrylate Copolymer, Aminomethyl Propanol, Dimethyl Stearamine, Fragrance, Citronellol, Amyl Cinnamal, Butylphenyl Methylpropional, Hydroxycitronellal, Geraniol, Limonene, Benzyl Salicylate, Alpha-Isomethyl Ionone, Linalol, Coumarin, Benzyl Benzoate, Water (Aqua), Polyglyceryl-3 Distearate, Polysorbate 60, Stearic Acid, Palmitic Acid, Myristic Acid, Guar Hydroxypropyltrimonium Chloride, Trilicum Vulgare (Wheat) Flour Lipids, Persea Gratissima (Avocado) Oil, Tetrahydrodecyl Ascorbate, Glycine Soja (Soybean) Sterols, Alpha-Glucan Oligosaccharide, Ceramide 3, Ethylhexyl Methoxycinnamate, Butyl Methoxydibenzoylmethane, Tocopheryl Acetate

### Mayfair Soap Foundry Body Crème in Sea Lily Jasmine

Ingredients: Water, Glycerol Stearate, Butyrospermum Parkii (Shea) Butter, Stearyl Alcohol, Caprylic/Capric Triglyceride, Dimethicon, Beeswax, Theobroma Cacao (Cocoa) Seed Butter, Cetyl Esters, Glycerin, Carthamus Tinctorius (Safflower) Seed Oil, Helianthus Annuus (Sunflower) Seed Oil, Glycine Soja (Soybean), Zea Mays (Corn) Oil, Camellia Sinensis Leaf Extract, Phenoxyethanol, Fragrance, Polyacrylamide, Polysorbate 20, Xanthan Gum, C13-14 Isoparaffin, Ethylhexylglycerin, Laureth-7, Sodium Hydroxide, Tocopheryl Acetate

### ACURE Day Cream Gotu Kola Stem Cell + OGF

Ingredients: purified water/aqua/eau, aqueous extracts/extractions aqueux: aloe barbadensis leaf juice, organic euterpe oleracea (passion fruit) extract, organic rubus fruticosus (blackberry) fruit extract, organic rosi canina (rosehips) fruit extract, organic punica granatum (pomegranate) fruit extract, organic calendula officinalis (calendula) flower extract, organic matricaria recutita (chamomile) flower extract, organic aspalathus linearis (rooibos) leaf extract, cetearyl alcohol, glyceryl caprylate, carthamus tinctorius (safflower) seed oil, theobroma cacao (cocoa) seed butter, cocoglycerides, vegetable glycerin, helianthus annuus (sunflower) oil, sodium levulinate, potassium sorbate, glyceryl laurate, oenothera biennis (evening primrose) oil, d-alpha tocopherol acetate, citrus sinensis (valencia orange), citrus reticulata (red mandarin), chlorella vulgaris extract, argania spinosa (argan) kernel oil, echinacea angustifolia stem cell extract, ubiquinone(CoQ10), eugenia caryophyllus (clove bud) oil, centella asiatica (gotu kola) stem cell extract, marubium vulgarestem cell extract

Distributed by Brand Connections, 20 North Wacker Drive, Suite 760, Chicago, IL 60606

2,000 Sets Available immediately

SRP                      \$39.99

FOB                      Edison, NJ

180 Sets Per Pallet

Each Set Individually Boxed

\$7.00 Each



Alles Brands Inc  
10 Meron Drive Ste 101  
Monroe, NY 10950  
845.662.9963