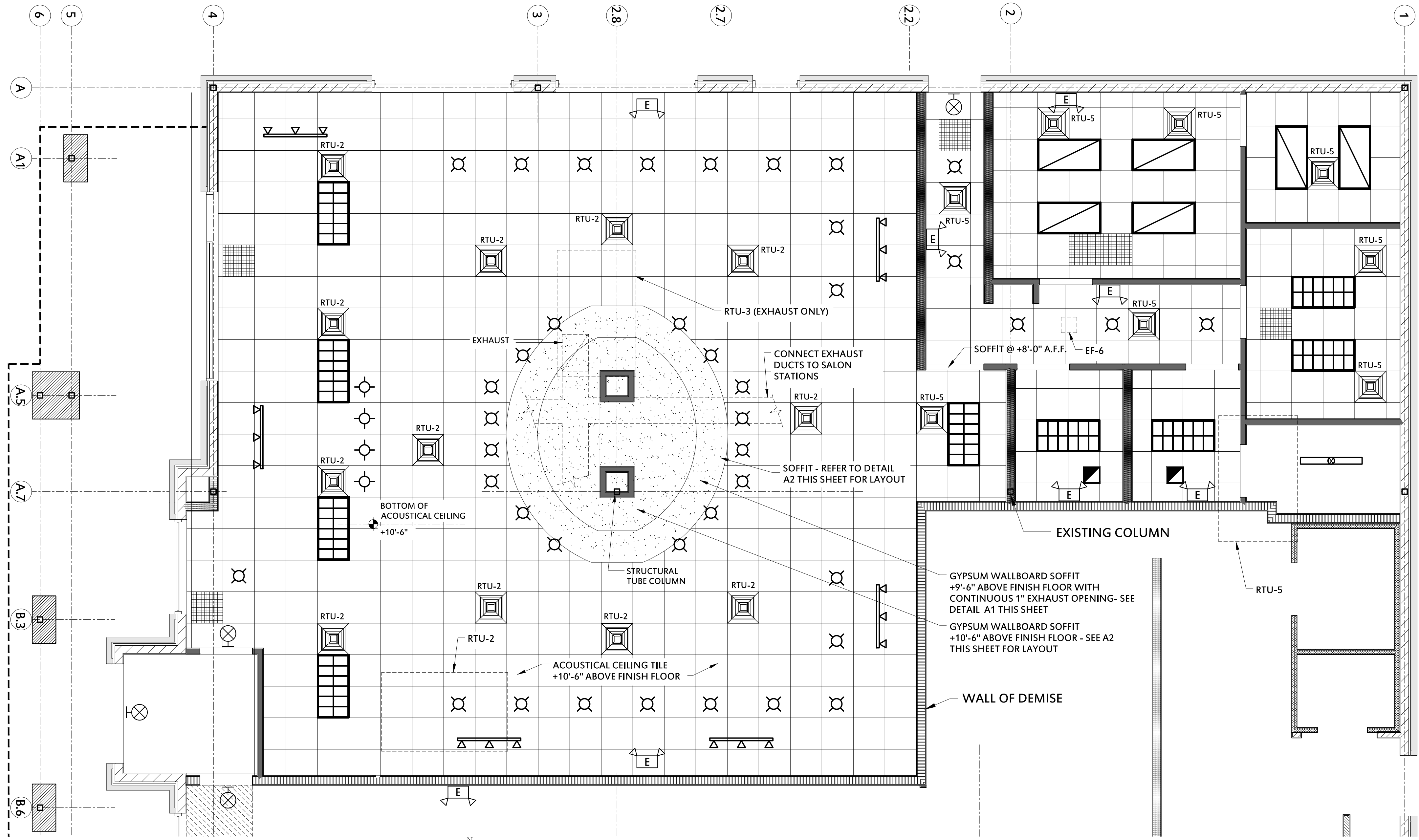


D1 MOUNTING HEIGHTS

SCALE : 3/8" = 1'-0"

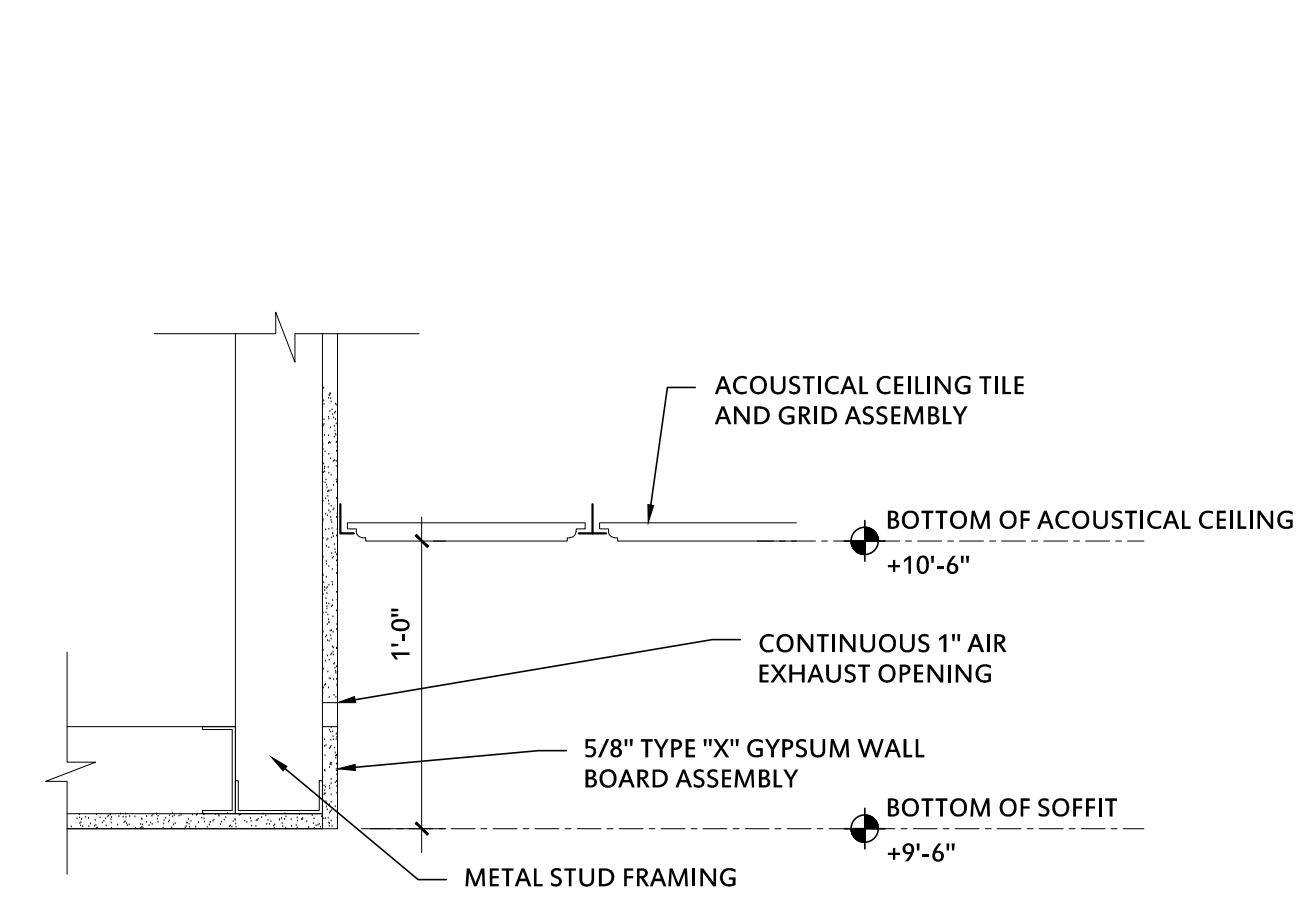
SYMBOL LEGEND

- EXIT SIGNAGE
- EMERGENCY LIGHTING - WALL MOUNTED
- 1'x4' SUSPENDED FLUORESCENT FIXTURE
- 2'x4' LAY-IN FLUORESCENT FIXTURE - TYPE A
- 2'x4' LAY-IN FLUORESCENT FIXTURE - TYPE B
- PENDANT LIGHT FIXTURE
- RECESSED CAN
- STRIP FLUORESCENT COVE LIGHTING
- TRACK LIGHT FIXTURE



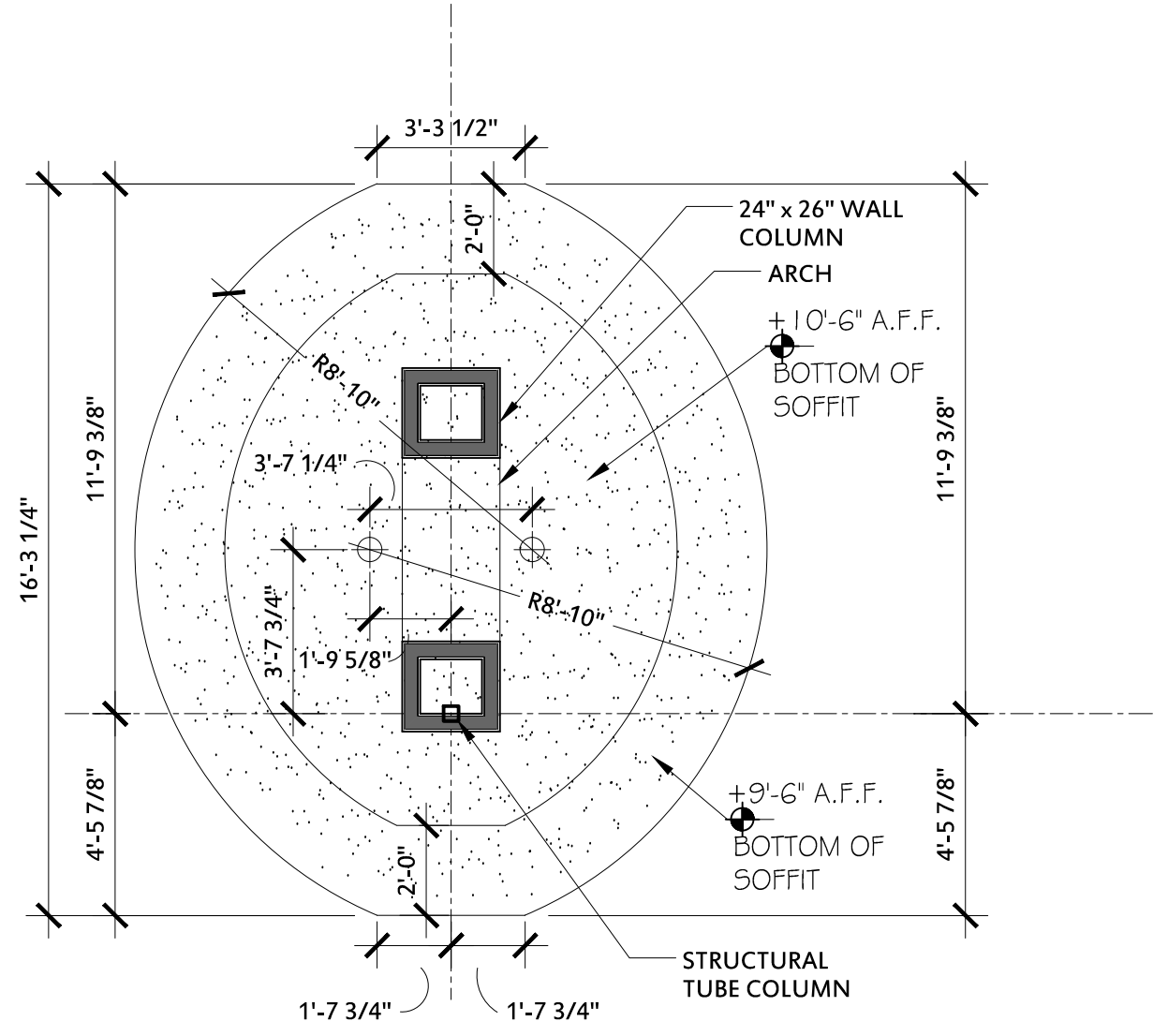
REFLECTED CEILING PLAN

SCALE : 1/4" = 1'-0"



A1 SOFFIT DETAIL

SCALE : 1-1/2" = 1'-0"



A2 SOFFIT PLAN

SCALE : 1-1/2" = 1'-0"

CEILING LIGHT FIXTURE SCHEDULE							
Description / PART#	QTY	Manufacturer	Model	LAMP	WATTS / FIXTURE	NOTE	Other Requirements
1'x4' SUSPENDED FLUORESCENT FIXTURE	1	COOPER LIGHTING - METALUX	METALUX DIF-232	2 LAMP/32W/T8	64	LOCATED IN MECHANICAL ROOM	-
2'x4' LAY-IN FLUORESCENT FIXTURE - TYPE A	6	COOPER LIGHTING - METALUX	METALUX I8-332	3 LAMPS/32W/T8	96	--	-
2'x4' LAY-IN FLUORESCENT FIXTURE - TYPE B	9	COOPER LIGHTING - METALUX	2EP3GX-332S36I-UNV-EB81-U	3 LAMPS/32W/T8	96	--	-
PENDANT LIGHT FIXTURE	4	LBC LIGHTING	CONICO	100W MED	100	MOUNT 7'-0" AFF	-
RECESSED CAN	40	JUNO	IC22LEDG2-27K / 24W-WH	LED	24	RECESSED LIGHTING	-
TRACK LIGHT FIXTURE	6	TECH LIGHTING	MONORAIL	(3) MR16	225	TYPE T156 HEAD	-

CEILING HEIGHT SCHEDULE			
ROOM	NAME	MATL	Height
100	VESTIBULE	EXIST	9'-0"
108	SALON	ACT#1/ GYPBRD	10'-6"
110	MENS	ACT#1	9'-6"
111	WOMENS	ACT#1	9'-6"
112	EMPLOYEE	ACT#1	9'-6"
114	WAX ROOM	ACT#1	9'-6"
115	MECH	--	9'-6"
116	HALLWAY	ACT#1	9'-6"
120	OFFICE	ACT#1	9'-6"
130	EGRESS	ACT#1	9'-6"

Architect:

Thomas McInerney
ARCHITECT
1208 Marcy Street
Iowa City, Iowa 52240-3331
www.thomasarchitect.com
319-331-0365
thomas@thomasarchitect.com

Thomas Mc Inerney Architect reserves the right to determine a fair and equitable solution to any problems, mistakes, oversights or hidden damage. Please do not hesitate to phone our office at 319-331-0365, especially immediately upon discovery a conflict with the Scope of Work.

Please do not instinctively produce a solution or proceed with work that would result in a change order requiring reimbursement by the owner.

Any solutions outside this policy shall be with prior approval and will be at the contractor's expense.

Project :

TENANT IMPROVEMENTS

for

MILADY

Nails & Spa

Coral Valley Market

945 25TH AVE SUITE "A"
CORALVILLE, IOWA

Project number: 14.15

Note: © COPYRIGHT 2014
UNAUTHORIZED COPYING, DISCLOSURE
OR CONSTRUCTION WITHOUT WRITTEN
PERMISSION
BY THOMAS MCINERNEY, ARCHITECT,
IS PROHIBITED.

Issue date:

Date	Description
AUG 25, 2014	REVIEW
SEP 10, 2014	REVISION
OCT 3, 2014	REVISION

Sheet Title:

REFLECTED CEILING PLAN

Sheet Number:

A-110