

RHOM = _____
 DTMTx = TOP - BTM 47.6
 DTMTx = _____
 DTMTx = _____

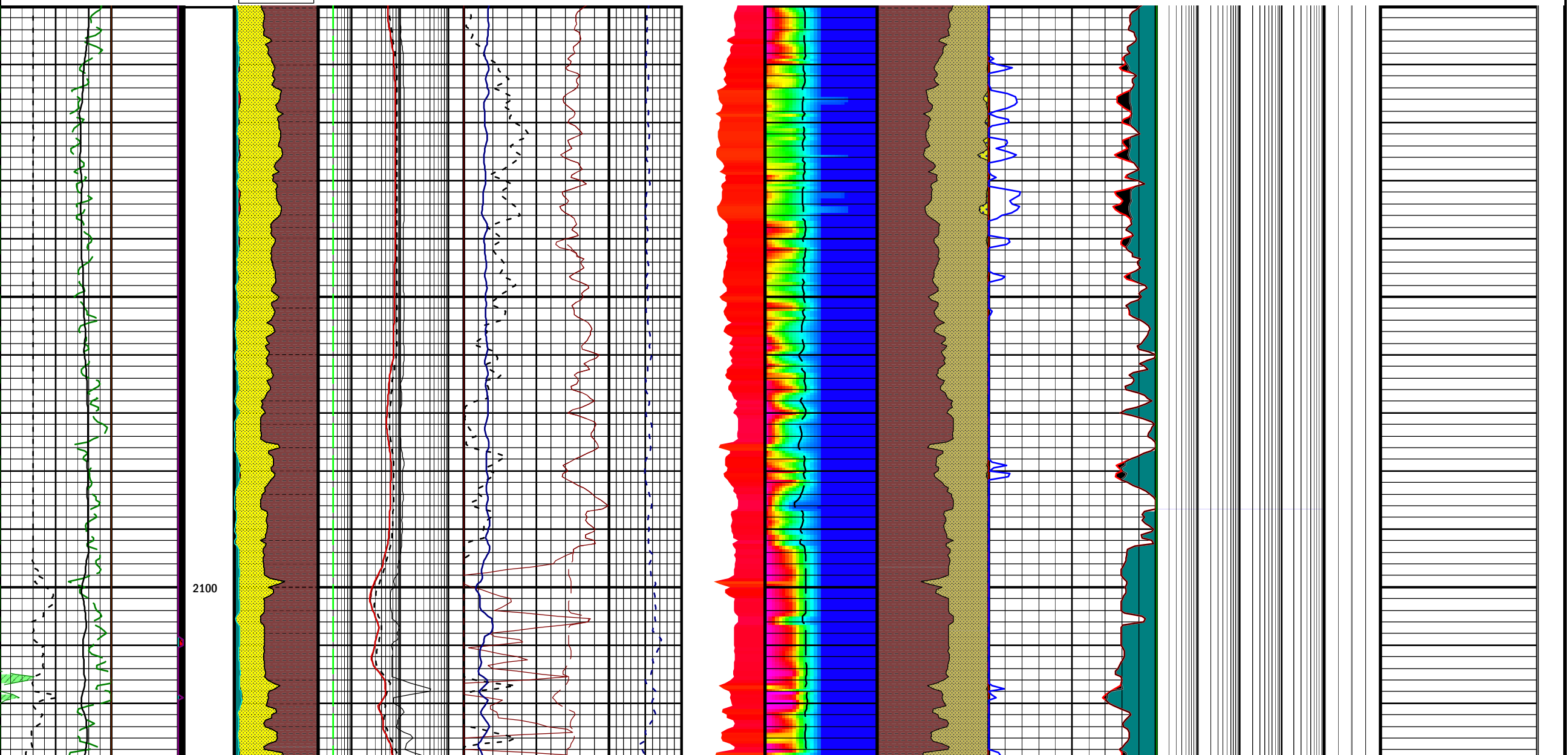
N = _____
 N = _____

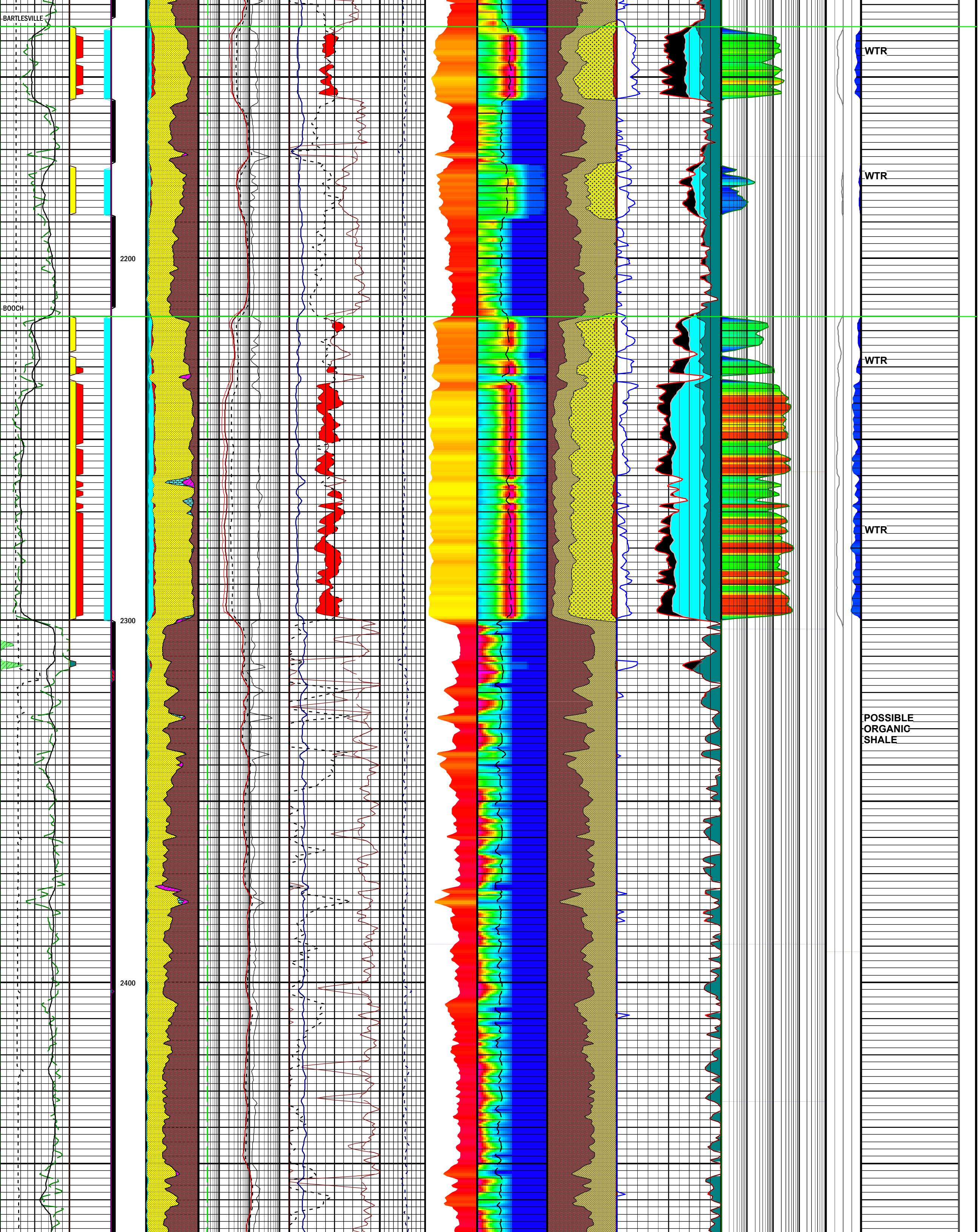
Project ID: 24710
 TG/JF/BH

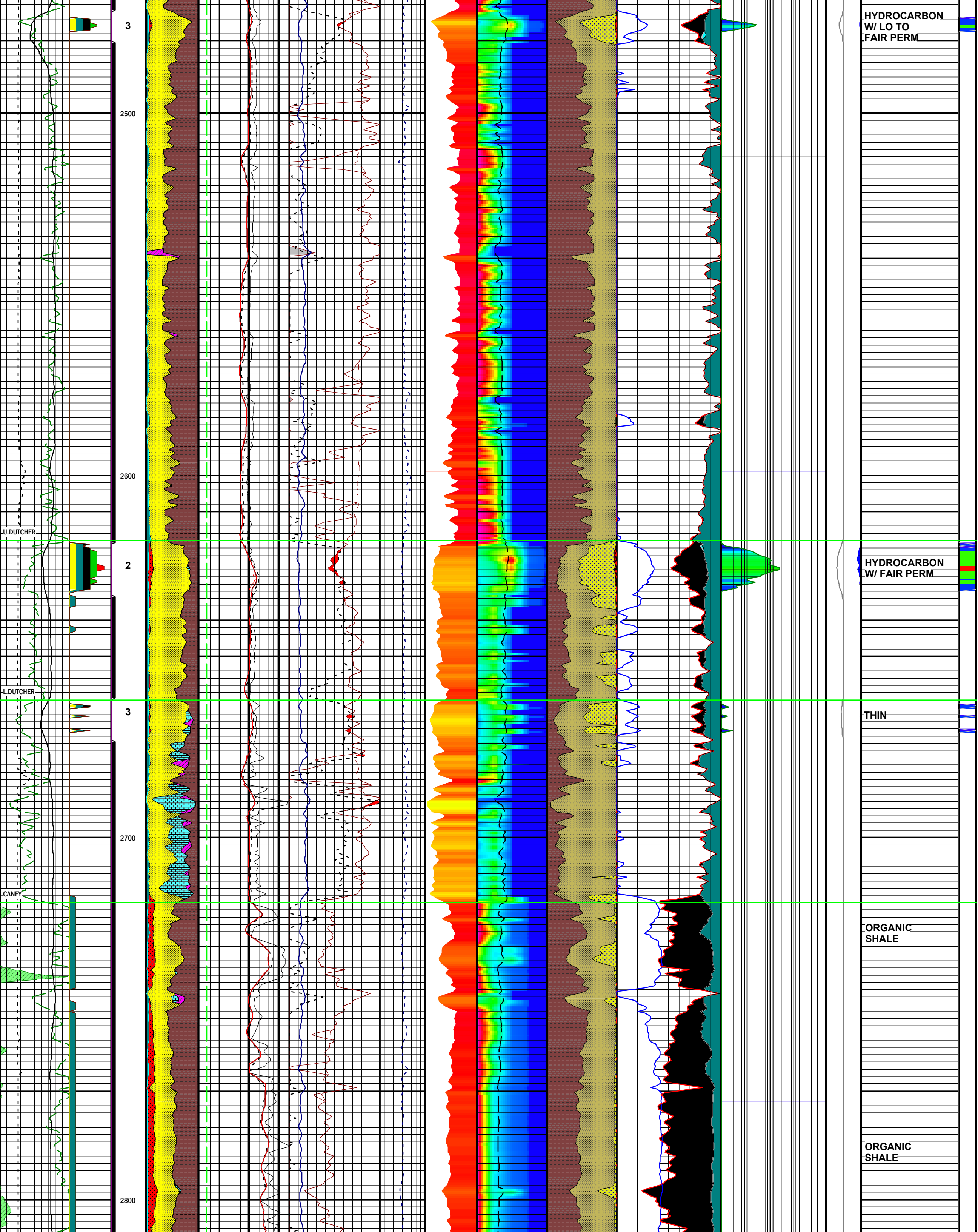
All interpretations are opinions based on inferences from electrical or other measurements, and we cannot and do not guarantee the accuracy or correctness of any interpretation, and we shall not, except in the case of gross negligence on our part, be liable or responsible for any loss, costs, damages or expenses incurred or sustained by anyone resulting from any interpretations made by any officers, agents or employees of NuTech Energy Alliance. These interpretations are also subject to Clause 4 of our General Terms and Conditions as set out in our current Price Schedule.

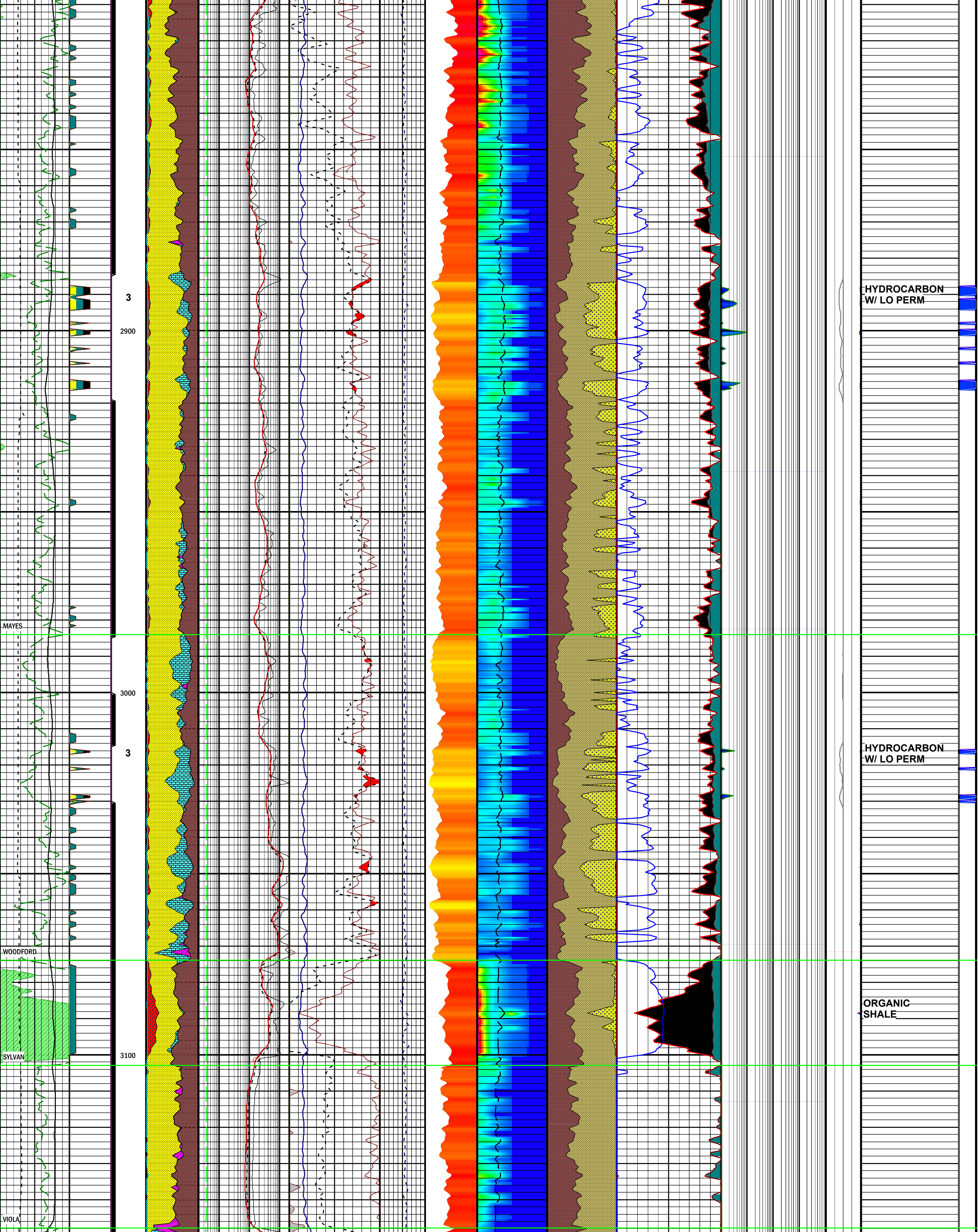
L COLE #1
 30 Mar 2016 @ 13:37
 DEPTH (FT)
 Interval: 2000.00 to 3360.00
 Depth Scale Ratio: 1/240

GRC 0 GAPI 150	FW_FLAG 6 0	DEPTH FT	PHIE 0 DEC 1	RESMG 0.2 OHMM 200	PHIDEDIT 0.3 DEC 0	CORR -0.25/C0.25	NUMATR 1 0	NUSPEC 0 0.1	CLAY 0 DEC 1	SW 1 DEC -1	NUPERM 0.01 MD 100	NUSPEC4 0.05 0
GRC 150 GAPI 300	FF_FLAG 0 6	SHAPE	VSS 0 DEC 1	RESMI 0.2 OHMM 200	PDLS 0.3 DEC 0		NUMATR 1	TEXGM 0.1 100	SMALL 0 DEC 1	BVW 0.3 DEC 0	NUPERM 0.01 MD 100	W 1.5 2.5
CALI 6 IN 16	LW_FLAG 0 6	CALIFLG 0 SHALE	VLS 0 DEC 1	RESDI 0.2 OHMM 200	PDLS 0 DEC -0.3				MEDIUM 0 DEC 1	PHIE 0.3 DEC 0	NUPERM 100	NUSPEC4
SPBL -160 MV 40	FHC_FLAG 0 6	SHALE	VDOL 0 DEC 1	RT 0.2 OHMM 200	PCNLS 0.3 DEC 0				LARGE 0 DEC 1	BVI 0.3 DEC 0		
GRC	KF_FLAG 0 6	CALIFLG	VANHY 0 DEC 1	RWG 0.02 OHMM 20	PE 0 B/E 20				CLAY 0	SW 1		
	KG_FLAG 0 6		BVI 0 DEC 1		PHIDEDIT PCNLS				CLAY SMALL 0	BVW 0		
	FW_FLAG 0		BVW 0 DEC 1		PDLS 0				SMALL MEDIUM 0	PHIE 0		
	FF_FLAG 0		PHIE 0						MEDIUM LARGE 0	BVI 0		
	FF_LW_FLAG		PHIE VSS									
	LVFHC_FLAG		VSS VLS									
	FHCKF_FLAG		VLS VDOL									
	KF_KG_FLAG		VDOL VANHY									
			VANHY 1									
			BVI 0									
			BVI BVW									
			BVW PHIE									









3

2900

3000

3

3100

HYDROCARBON
W/ LO PERM

HYDROCARBON
W/ LO PERM

ORGANIC
SHALE

MAYES

WOODFORD

SYLVAN

VIOLA

