

CONCRETE MATERIALS

- A. Cement: ASTM C 150, Type 1 - Normal Portland type.
- B. Fine and Coarse Aggregates: ASTM C 33.
- C. Fly Ash: ASTM C 618, Class C or F.
- D. Granulated Blast-Furnace Slag: ASTM C 989, Grade 100. Provide "GranCem" cement supplied by Holcim Inc.
- E. Water: Clean and not detrimental to concrete.
- F. Fiber Reinforcement: Synthetic fiber shown to have long-term resistance to deterioration when exposed to moisture and alkalis; 3/4 inch length. Provide "Grace MicroFiber" manufactured by Grace Construction.

ADMIXTURES

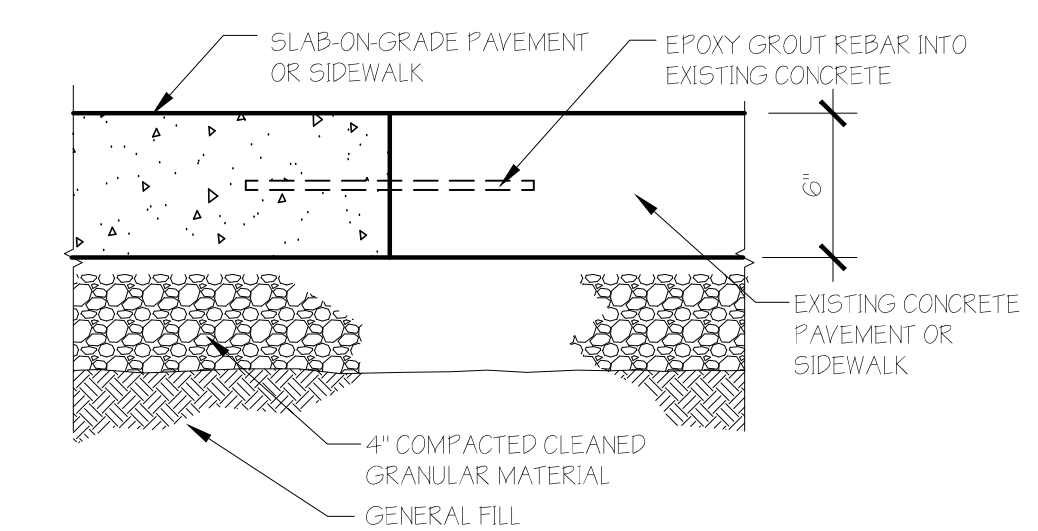
- A. Air Entrainment: Admixture: ASTM C 260.
 1. Provide: manufactured by one of the following:
 - a. The Euclid Chemical Company; www.euclidchemical.com.
 - b. Grace Construction; www.graceconstruction.com.
 2. Do not use air entrainment admixture in concrete for interior floor slabs.
- B. Chemical Admixtures: ASTM C 494/C 494M, Type A - Water Reducing.
 1. Provide mid-range water-reducing admixture allowing 12-15 percent reduction of water content in concrete mix.
 2. Do not use chemicals that will result in soluble chloride ions in excess of 0.1 percent by weight of cement.
 3. Acceptable:
 - a. "Eucon MR" manufactured by The Euclid Chemical Company.
 - b. "Daracem 65" manufactured by Grace Construction

CONCRETE REINFORCEMENT

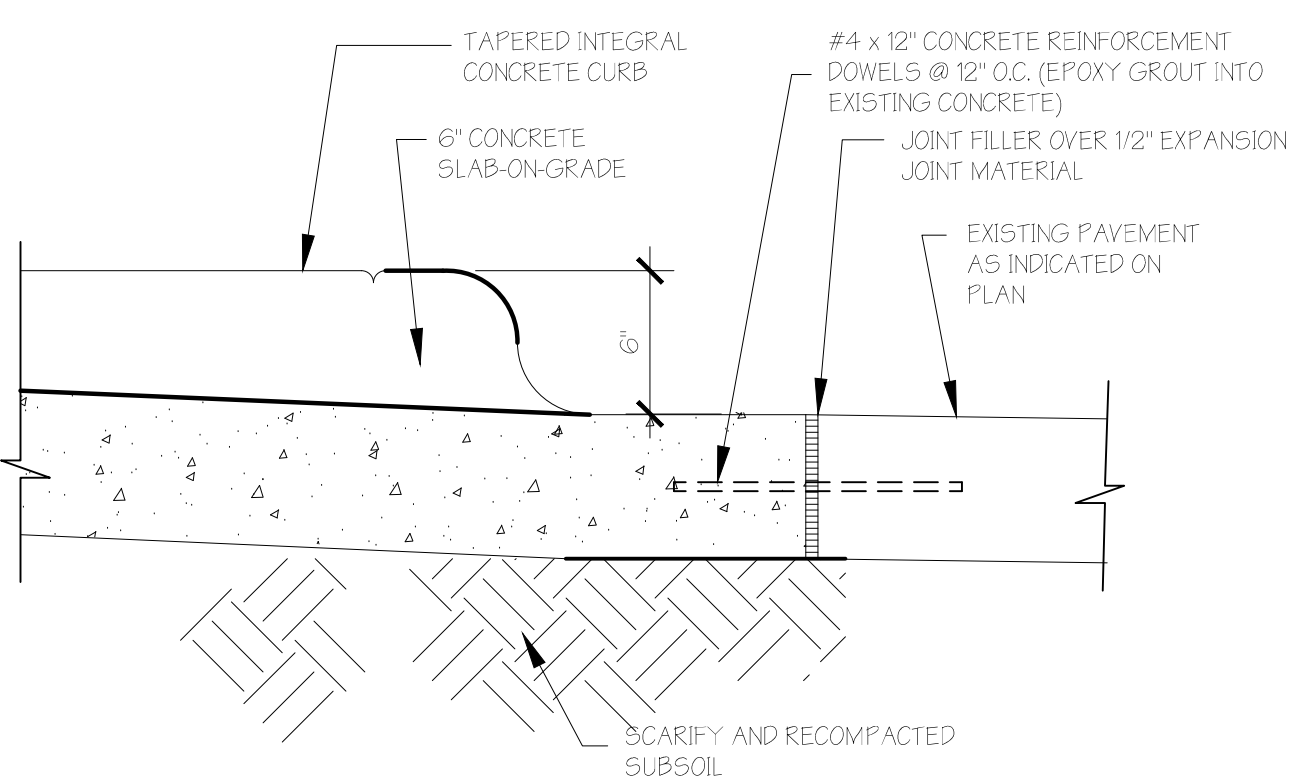
1. Reinforcing Steel: ASTM A 615/A 615M Grade 60 (420). Deformed billet-steel bars, Unfinished.
2. Steel Welded Wire Reinforcement: ASTM A 185, plain type. Flat Sheets.
3. Reinforcement Accessories: Tie Wire: Annealed, minimum 16 gage.
4. Chairs, Bolsters, Bar Supports, Spacers: Sized and shaped for adequate support.

EXTRUDED POLYSTYRENE RIGID BOARD INSULATION

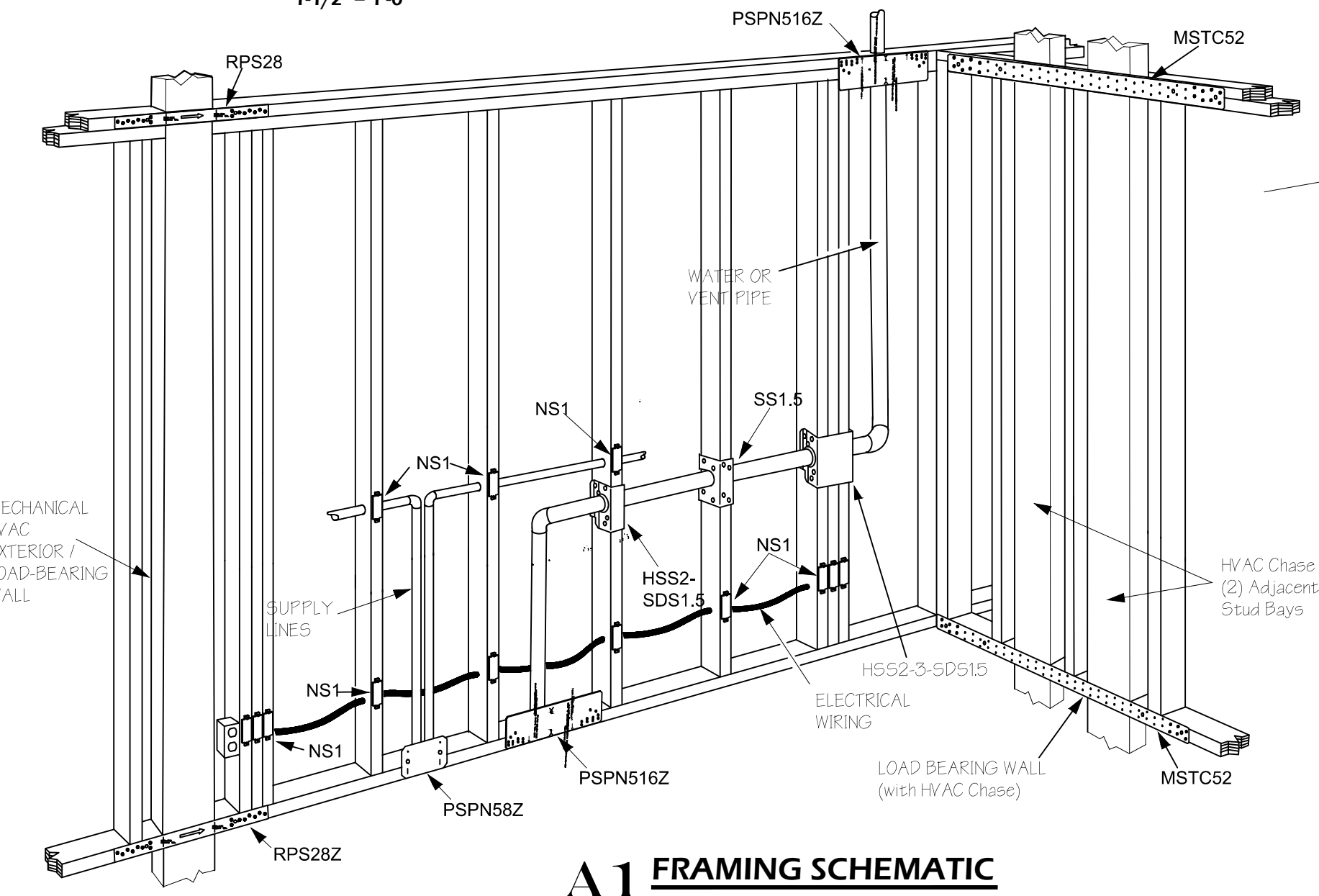
1. Acceptable manufacturers:
 - 1.1 Dow Chemical Co. ("Styrofoam")
 - 1.2 U.C. Industries ("Foamular")
2. Provide extruded polystyrene rigid board insulation: ASTM C578, type IV; with the following attributes:
 - 2.1 25 psi minimum compressive strength
 - 2.2 Less than 1% water absorption by volume.
 - 2.3 Provide tongue and groove edges on perimeter foundation wall insulation.
 - 2.4 Provide square edges on cavity wall insulation. Coordinate size of boards with spacing of wall ties.
3. Contact adhesive: Provide adhesive recommended by insulation manufacturer for intended use.
4. INSTALLATION
 - 4.1. Install board insulation at all locations indicated on drawings.
 - 4.2. Install perimeter insulation against the foundation wall with tongue and groove joints vertical. Boards shall be installed flush with tight joints.
 - 4.3. Maintain insulation tight against foundation wall during backfilling and compaction.



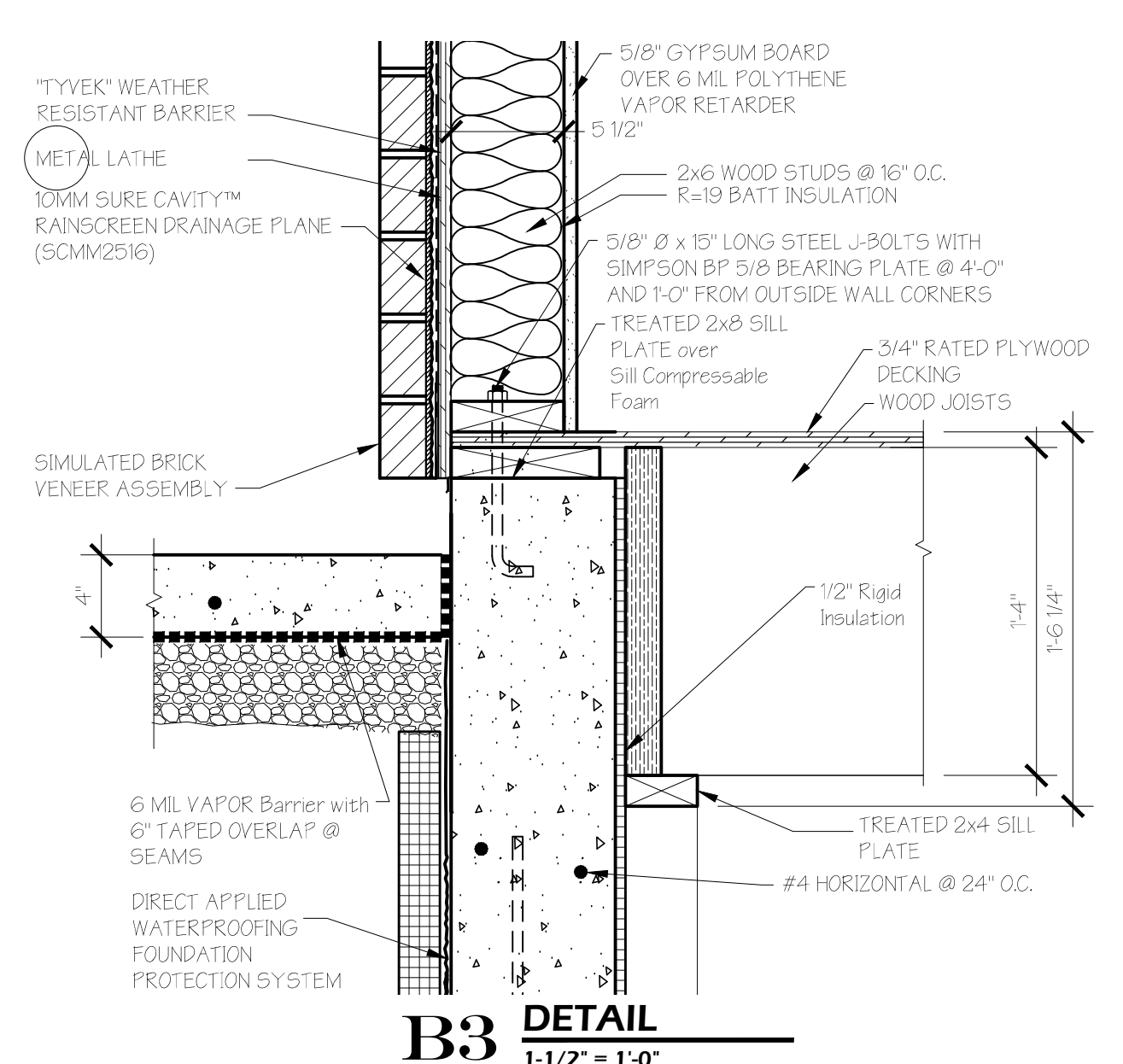
A3 CONCRETE SLAB-ON-GRADE DETAIL
1-1/2" = 1'-0"



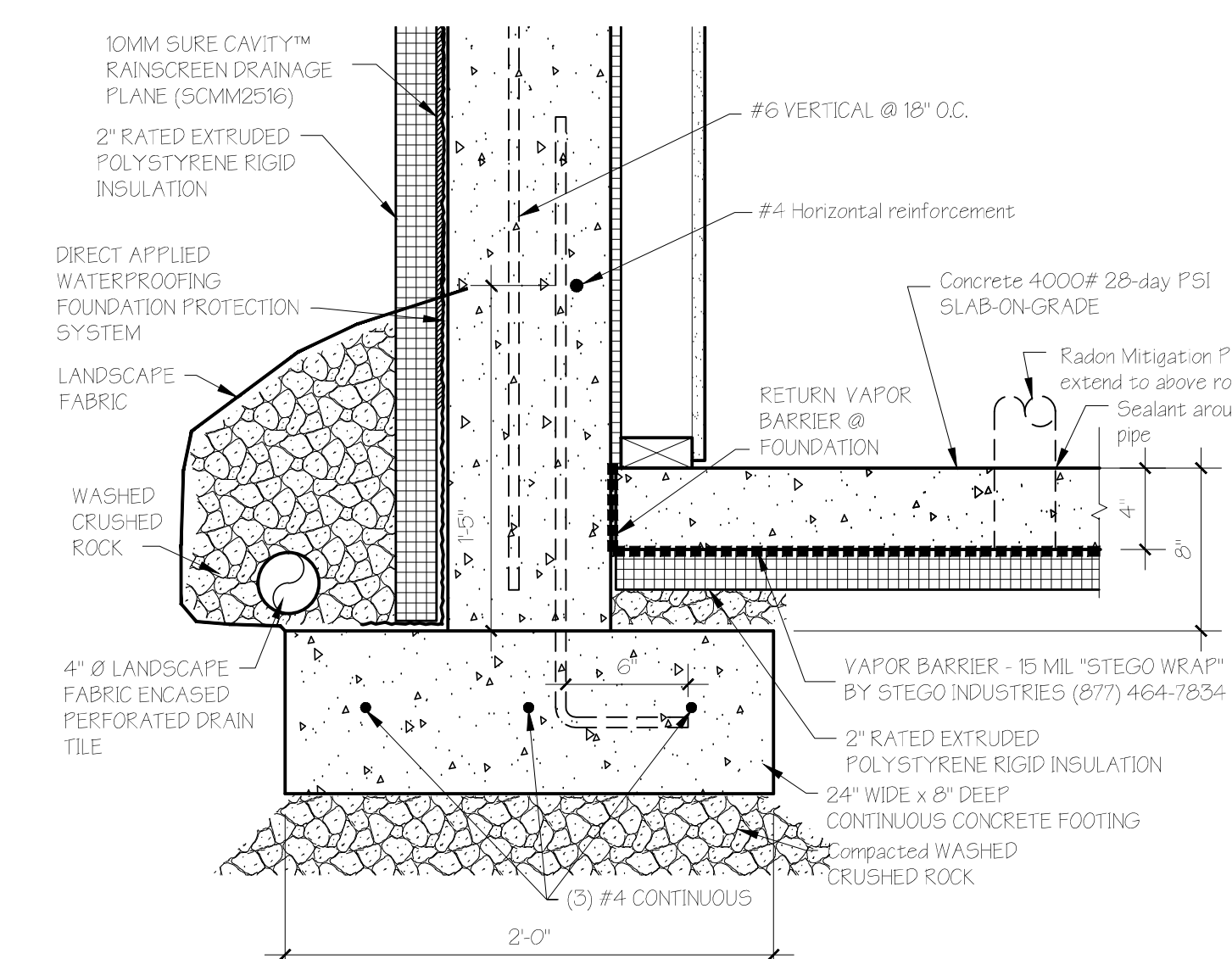
A2 CONCRETE ENTRY DETAIL
1-1/2" = 1'-0"



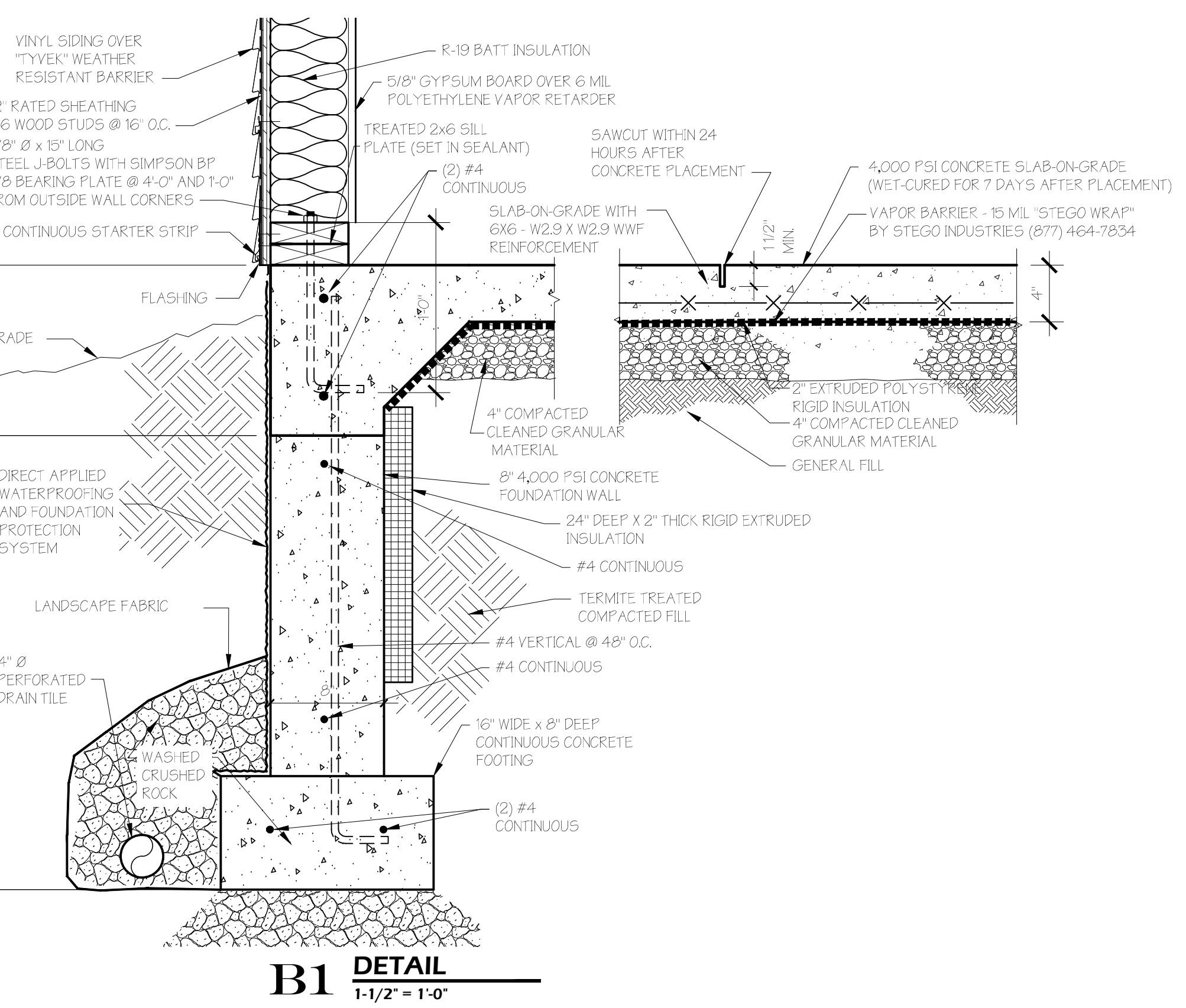
A1 FRAMING SCHEMATIC
NO SCALE



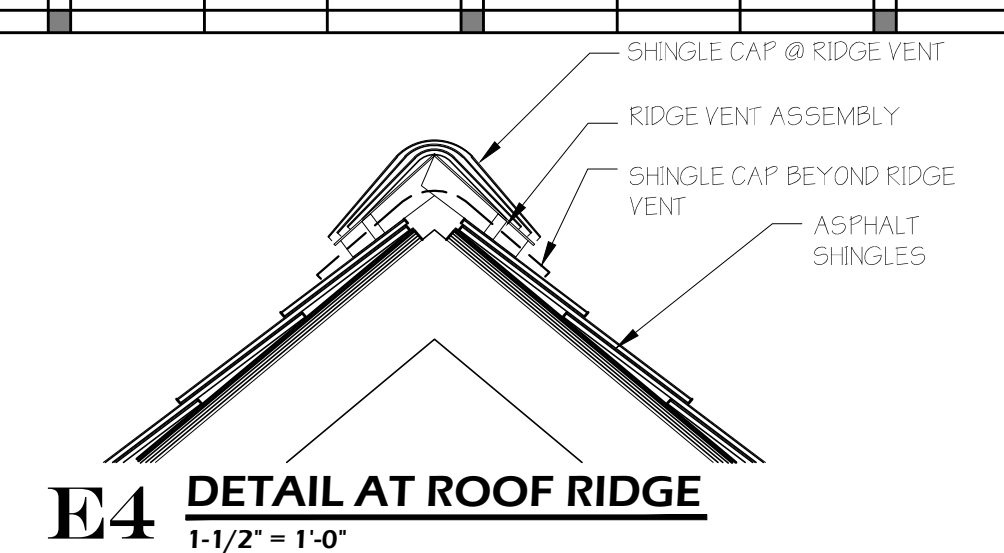
B3 DETAIL
1-1/2" = 1'-0"



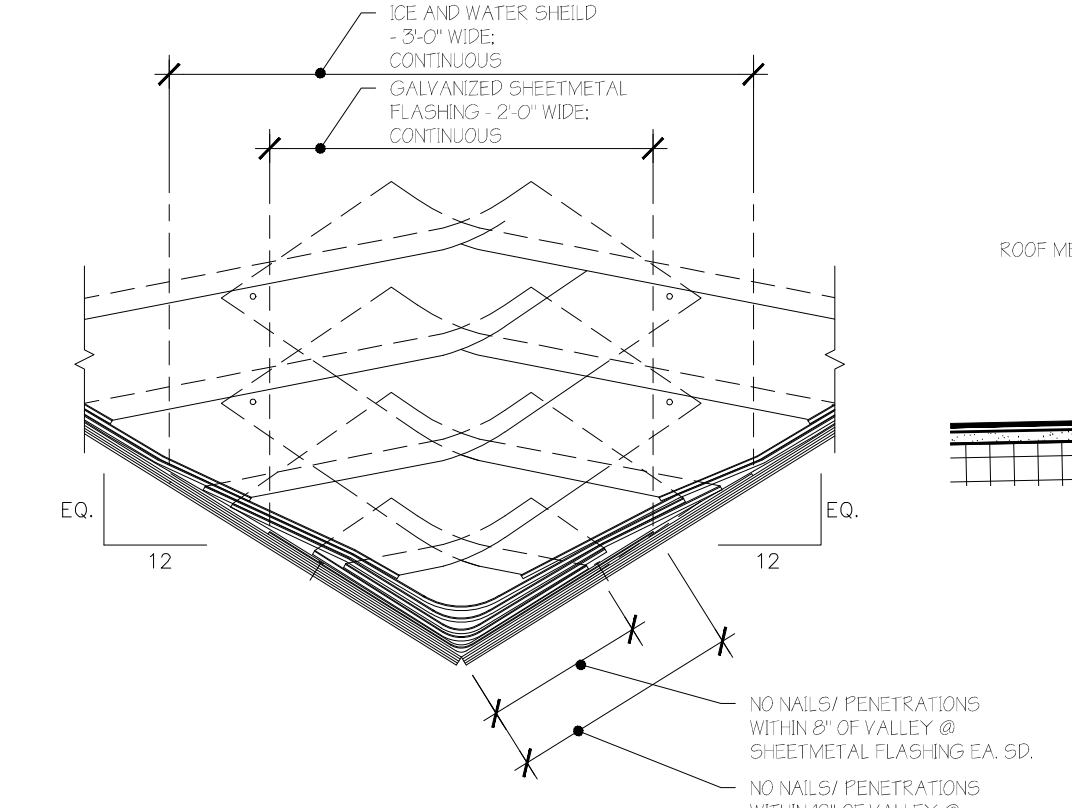
B2 DETAIL
1-1/2" = 1'-0"



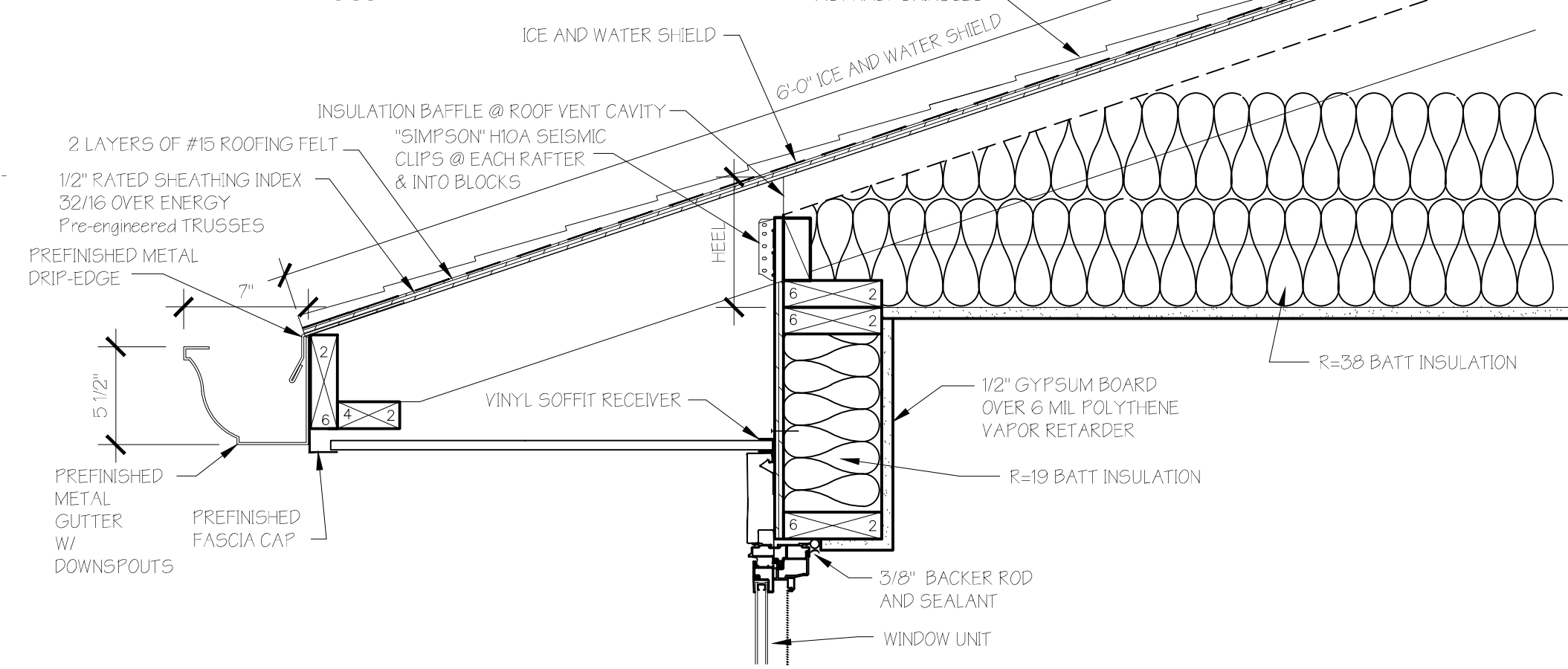
B1 DETAIL
1-1/2" = 1'-0"



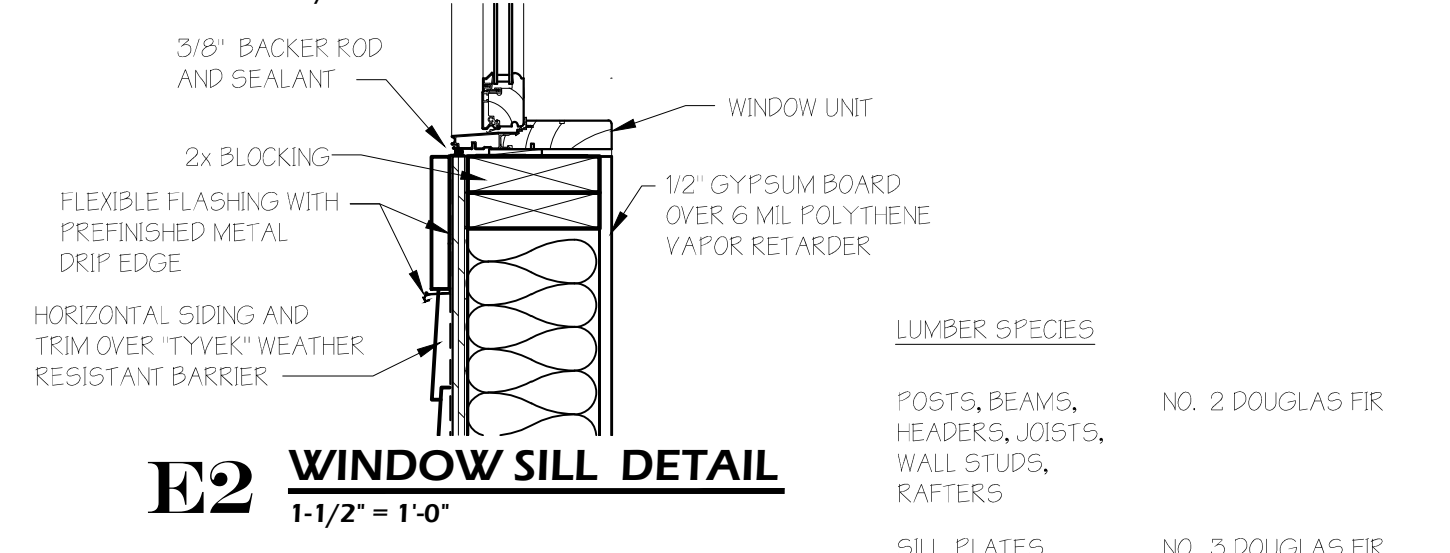
E4 DETAIL AT ROOF RIDGE
1-1/2" = 1'-0"



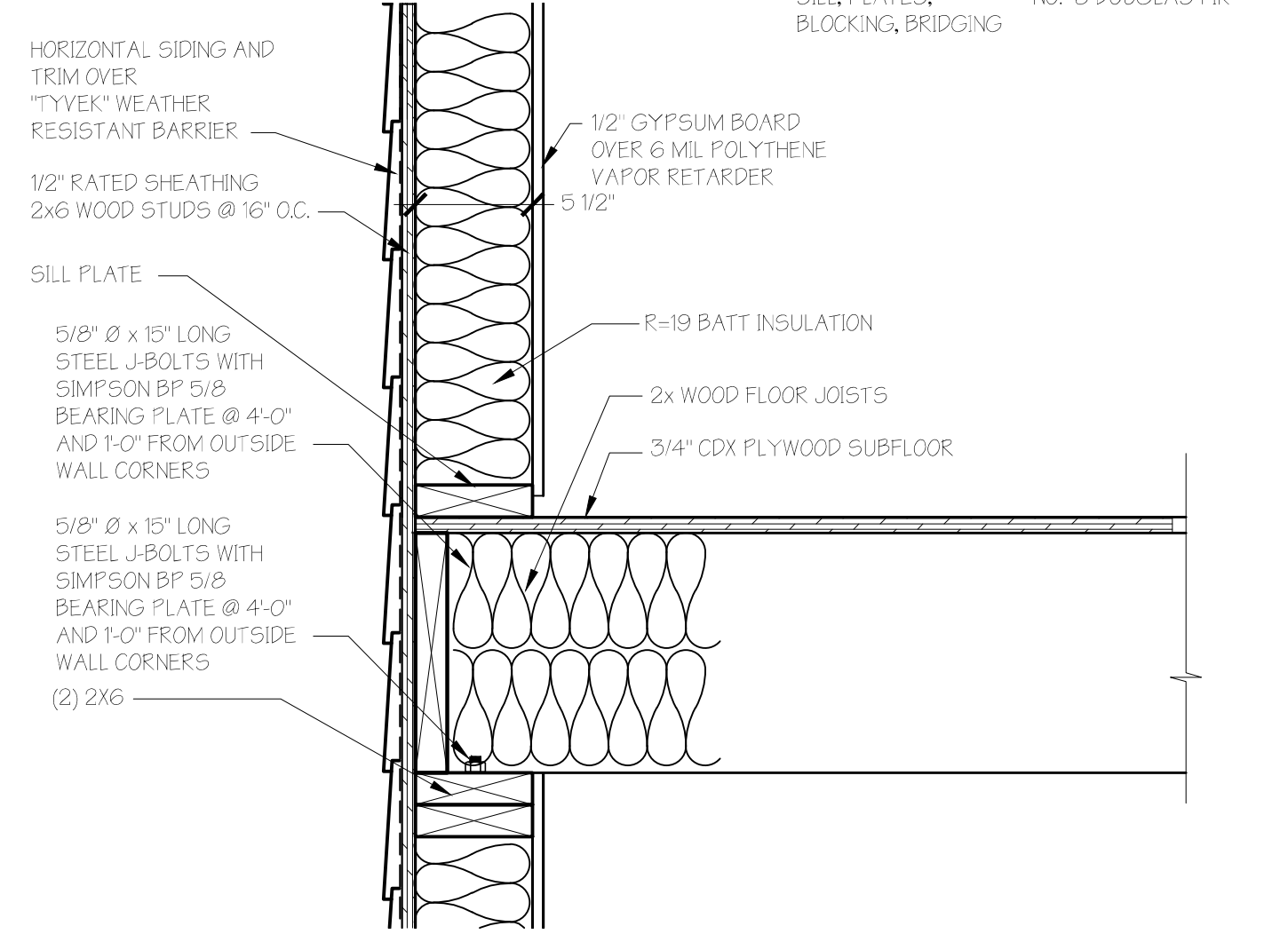
D2 DETAIL AT ROOF VALLEYS
NO SCALE



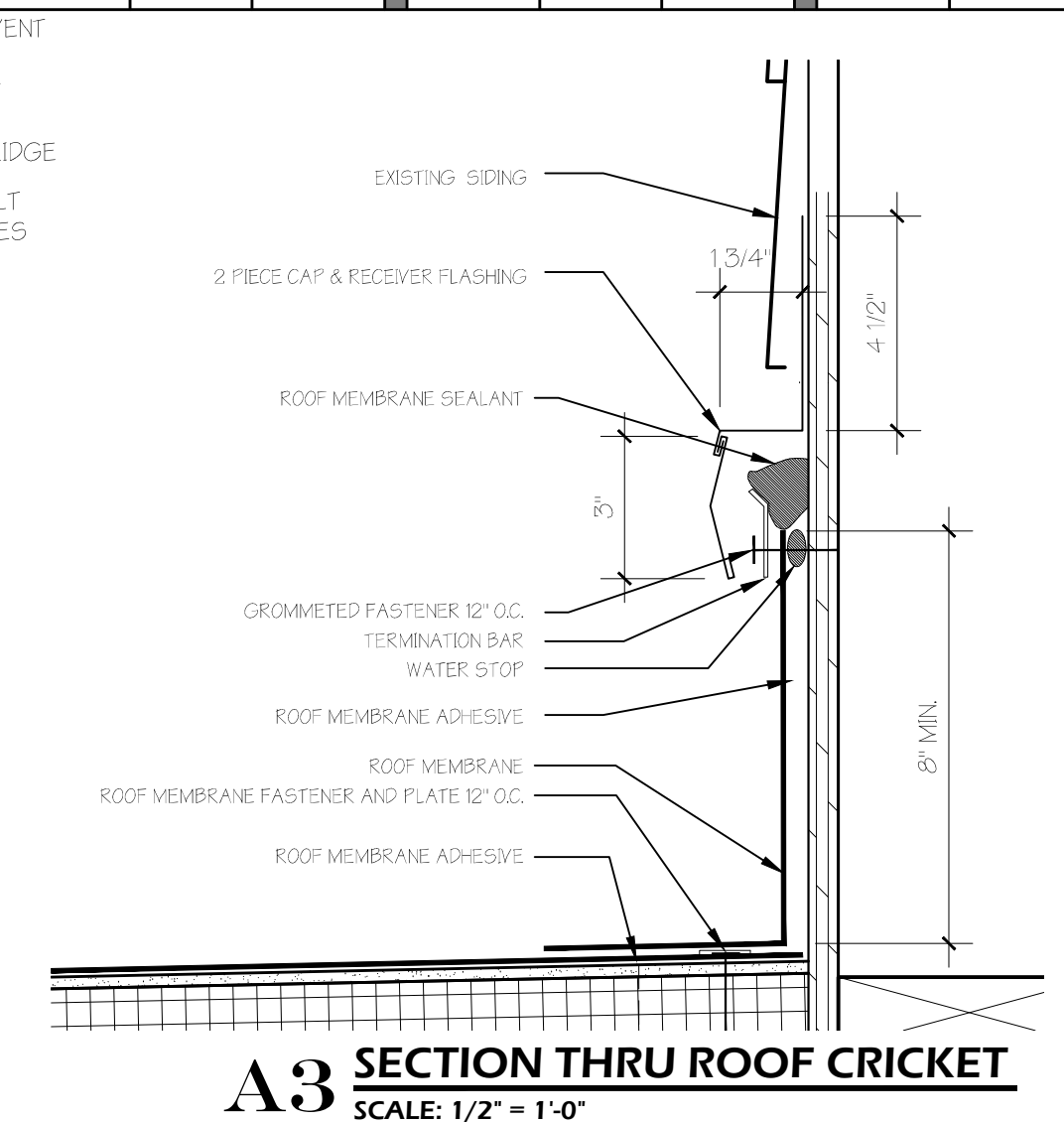
E3 ROOF EAVE DETAIL
1-1/2" = 1'-0"



E2 WINDOW SILL DETAIL
1-1/2" = 1'-0"



E1 DETAIL
1-1/2" = 1'-0"



A3 SECTION THRU ROOF CRICKET
SCALE: 1/2" = 1'-0"

Architect:

Thomas McInerney ARCHITECT
www.thomasarchitect.com
1208 MARCY STREET IOWA CITY, IOWA 52240
319-331-0365
thomas@thomasarchitect.com

ITEMS SHOWN ARE DIAGRAMMATIC AND ARE SHOWN FOR THE LIMITED PURPOSE OF INDICATING PROPOSED LOCATIONS OF THE DESIGN. CONTRACTORS SHALL PROVIDE WORK IN ACCORDANCE WITH ALL APPLICABLE CODES AND REGULATIONS REQUIRED BY THE AUTHORITY HAVING JURISDICTION. CONTRACTOR SHALL COORDINATE THE INSTALLATION OF NEW SYSTEMS WITH EXISTING SYSTEMS.

Thomas Mc Inerney Architect reserves the right to determine a fair and equitable solution to any problems, mistakes, oversights or hidden damage. Please do not hesitate to phone our office at 319-331-0365, especially immediately upon discovery a conflict with the Scope of Work.

Please do not instinctively produce a solution or proceed with work that would result in a change order requiring reimbursement by the owner.

Any solutions outside this policy shall be with prior approval and will be at the franchisee's or contractor's expense.

Project:



Little Clippers CHILD DEVELOPMENT CENTER

415 Deer View Drive Tiffin, Iowa
PROPERTY PIN: 0628258011

Project number: 11.14

Note: © COPYRIGHT UNAUTHORIZED COPYING, DISCLOSURE OR CONSTRUCTION WITHOUT WRITTEN PERMISSION BY THOMAS MCINERNEY, ARCHITECT, IS PROHIBITED.

Issue date:

Date	Description
2011.06.30	owner review
2011.07.17	Contractor Review

Sheet Title:

SECTIONS AND DETAILS

Sheet Number:

A-501