

DOOR AND FRAME SCHEDULE										
NO.	ROOM	Style	SIZE-PR WxH	DOOR		FRAME		HARDWARE	Fire Rating	NOTES
				MAT.	FIN.	MAT.	FIN.			
13A	DINING ROOM	Cased Opening	2'-8" x 6'-8"	-	-	HM	PNT P5	-	--	1
191A	STORAGE	Hinged - Single Flush	3'-0" x 6'-8"	LAM	-	HM	PNT P5	19	20 MINUTE	1
2A	STAIRS UP	Hinged - Single Flush	3'-4" x 6'-8"	LAM	-	HM	PNT P5	20	20 MINUTE	1
3A	CORRIDOR	Hinged - Single Flush	3'-6" x 6'-8"	LAM	-	HM	PNT P5	20	20 MINUTE	1
8A	FRONT KITCHEN	Hinged - Single Flush HM	3'-0" x 6'-8"	HM	PNT P5	HM	PNT P5	18	--	1

NOTES:

1. FIELD VERIFY DOOR SIZE

GENERAL NOTES:

HM  
HOLLOW METAL

LAM  
THERMAL FUSED FLUSH DOOR

PNT  
PAINT

FBGL  
FIBERGLASS

Hardware Sets

SET #18

3 Hinges T4A3386 4 1/2 x 4 1/2 NRP  
1 Strm Lock w/Ddbt 10 49-185C 8230 LNJ  
1 Closer 1431 CPHS  
1 Door Sweep 345 DNB + 36" TEK SCREWS  
1 Weatherstripping 303\_DPK + 36" TEK SCREWS  
1 Wall Stop WS01  
1 Threshold 252 X 3 AFG 40"

SA  
SA  
SA  
PE  
PE  
MC  
PE

Set #19

3 Hinges TA2714 4 1/2 X 4 1/2  
1 Passage Set 8215 LNJ  
1 Gasketing PK 55 W 17"  
1 Overhead Stop 598S

MC  
SA  
PE  
SA

Set #20

3 Hinges TA2714 4 1/2 X 4 1/2  
1 Passage Set 8215 LNJ  
1 Wall Stop WS01  
1 Gasketing PK 55 W 17"  
1 Closer 1431 CPS

MC  
SA  
MC  
PE  
SA

Door Hardware Manufacturers

Hinges; McKinney (MC)

Locksets; Sargent (SA), 7 Line, LL Design.

Push & Pulls; McKinney (MC)

Exit Devices; Sargent (SA), 3828 Series.

Closers; Sargent (SA), 1431 Series.

Kick Plates; McKinney (MC)

Gaskets; Pemko (PE)

Overhead Stops; Sargent (SA), 590 Series.

Wall Bumpers; McKinney (MC)

Finishes: OIL RUBBED BRONZE (US10B)

Keying: Locks to be keyed per owner's instructions.

ROOM FINISH SCHEDULE										
NO.	ROOM	FLR	Base	WALL FINISH AND TYPE				CEILING		NOTES
				NORTH	SOUTH	EAST	WEST	MATL	Height	
08	FRONT KITCHEN	CONC #1	RUBBER WALL BASE #1	PNT GYP #2	PNT GYP #2	PNT GYP #2	PNT GYP #2	ACT #2	7'-5 1/2"	2, 3
13	DINING ROOM	TERRAZZO	TERRAZZO	PNT GYP	PNT GYP	PNT GYP	PNT GYP	ACT #1	8'-5 1/4"	1
191	STORAGE	CONC #1	RUBBER WALL BASE #1	PNT GYP #2	PNT GYP #2	PNT GYP #2	PNT GYP #2	PNT EXP	8'-0"	--

- NOTES:
- REFURBISH FINISH OF TERRAZZO FLOOR.
  - REMOVE EXISTING FLOOR TILE.
  - APPLY DESIZER TO EXISTING CONCRETE SLAB-ON-GRADE. GRIND SMOOTH.

GENERAL NOTES:

CONC #1  
POLISHED CONCRETE SYSTEM BY SCOFIELD "Formula One"  
MECHANICALLY GRIND CONCRETE SLAB-ON-GRADE TO A 200 GRIT SURFACE PROFILE PRIOR TO SYSTEM APPLICATION.

- CONCRETE DENSIFIER:  
LITHIUM DENSIFIER MP
- COLOR: Liquid Dye Concentrate;  
# 1245, "LEATHER"
- FINISH: Guard-W

PNT GYP

PAINTED GYPSUM WALL BOARD  
A NUMBER FOLLOWING "PNT GYP" INDICATES COLOR OF PAINT.  
SEE PAINT SCHEDULE FOR NUMBERS CORRESPONDING WITH THE COLOR OF PAINT.

RUBBER WALL BASE #1

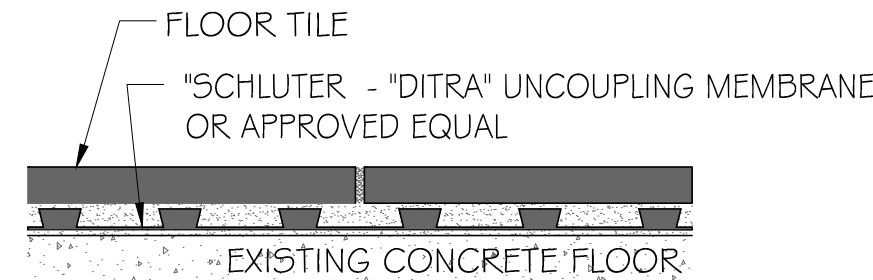
MANUFACTURER: ROPPE  
COLOR: "LIGHT BROWN" P147

MOSAIC TILE

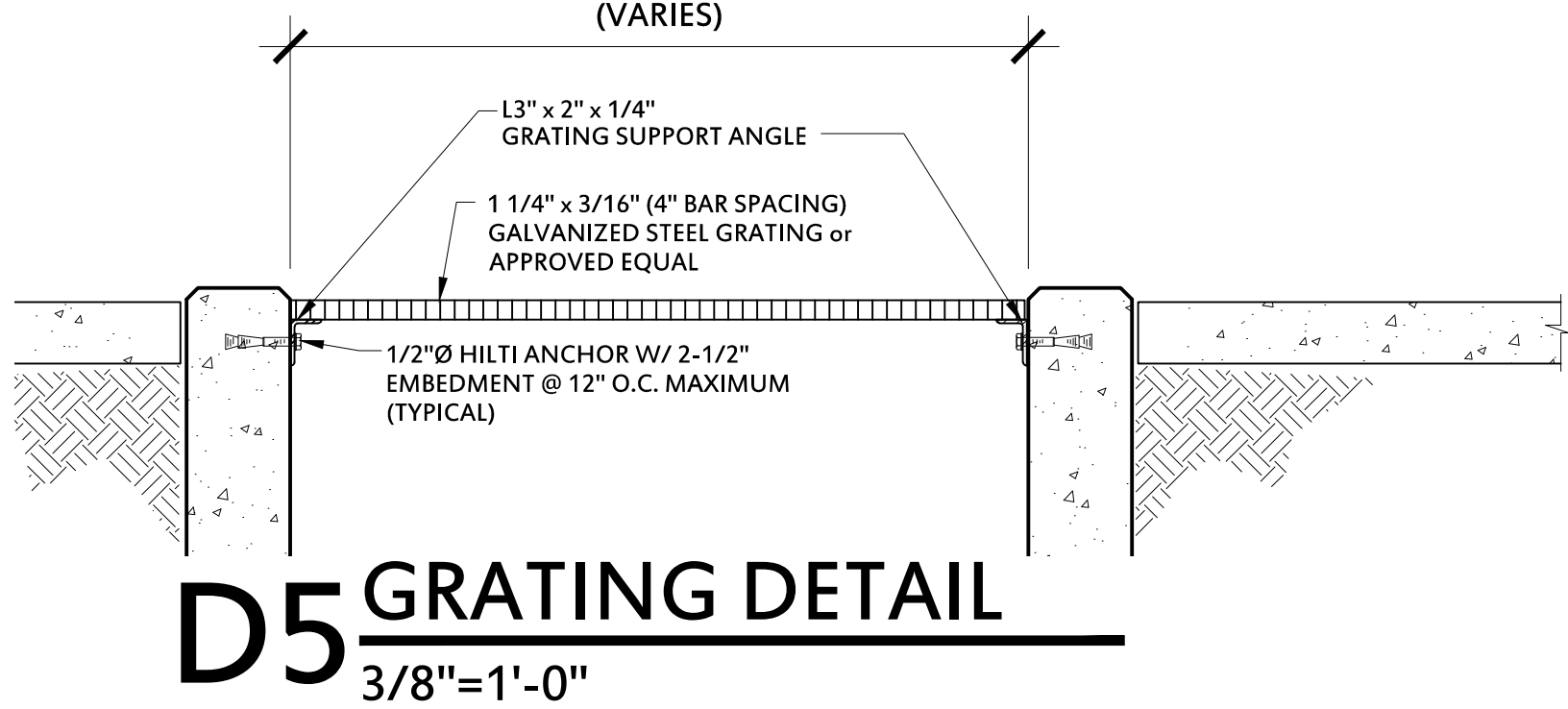
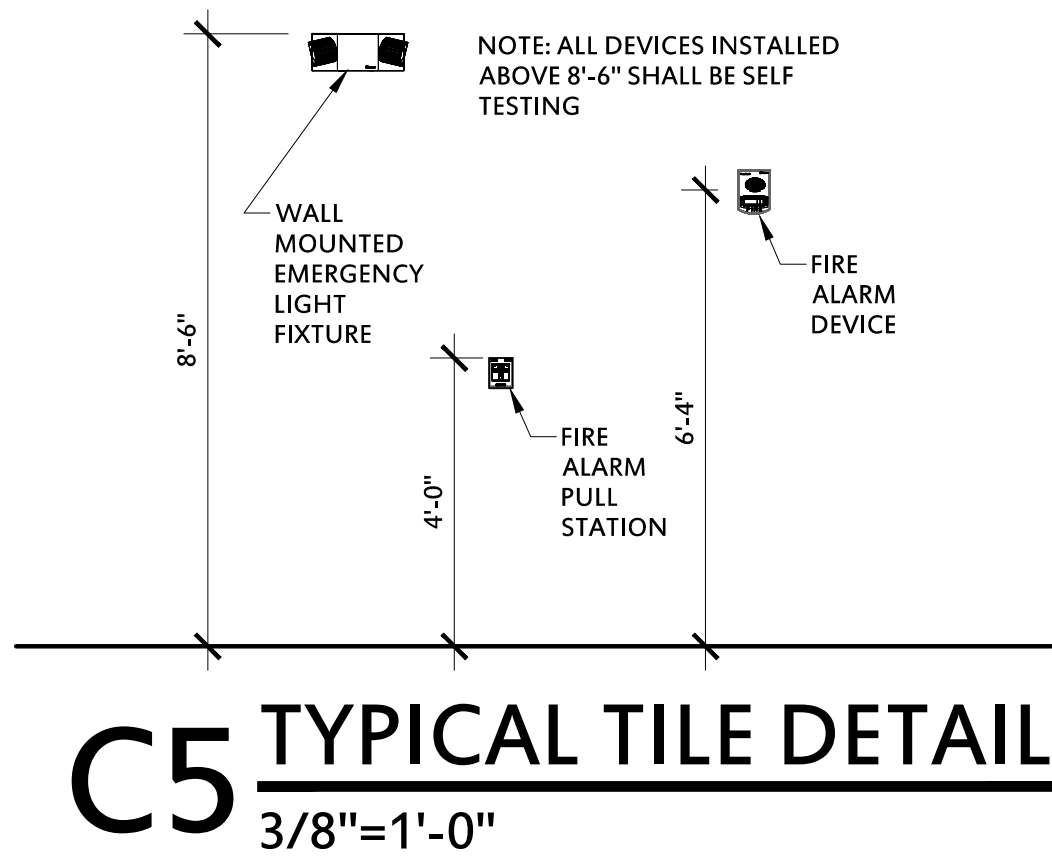
TILE MANUFACTURER: AMERICAN OLEAN

FLOOR:

UNGLAZED-COLORBODY PORCELAIN  
81% COLOR #1: "VANILLA CREAM" A95  
13% COLOR #2: "FRENCH ROAST" A15  
6% COLOR #3: "CINNAMON" A42  
PATTERN: #2040 - DALTILE  
TRANSITION TRIM: BRASS, BRIGHT  
GROUT: "FRENCH VANILLA" #13  
GROUT MANUFACTURER: MAPEI

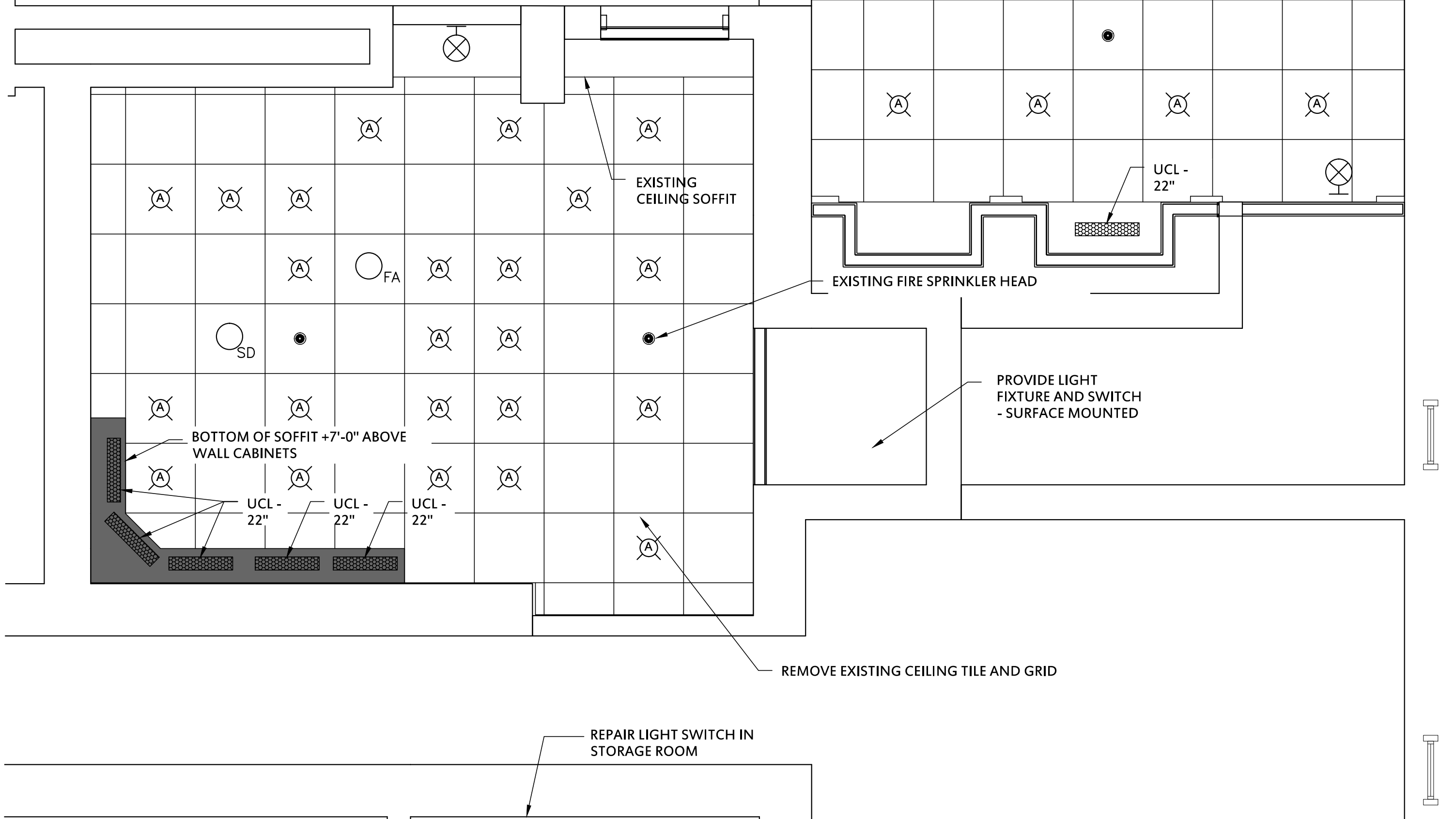
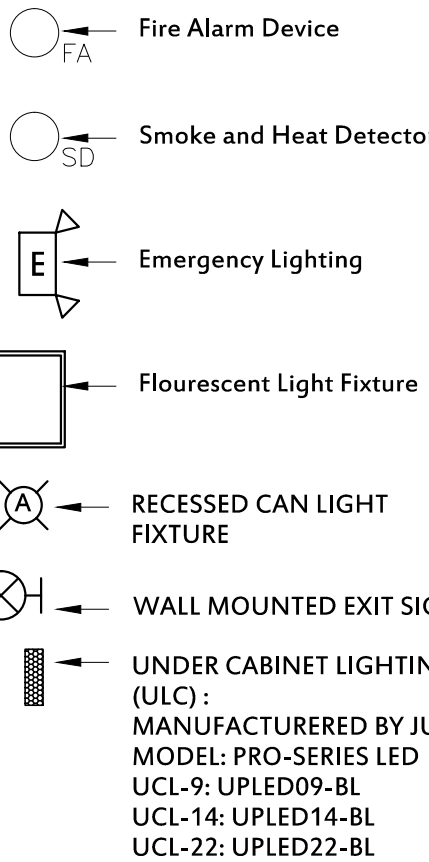


A3 TYPICAL TILE DETAIL  
NOT TO SCALE



FIXTURE SCHEDULE					
Description	Manufacturer	Model	NOTE		QTY
EXIT SIGN	COOPER LIGHTING	AP70R	WALL MOUNTED		3
FIRE ALARM DEVICE	--	--	--		2
INDOOR EMERGENCY LIGHT	COOPER LIGHTING	AP25Q	WALL MOUNTED		3
RECESSED CAN LIGHT FIXTURE	JUNO	IC22LEDG2-27K / 24W-WH	LED		47
SMOKE / HEAT DETECTOR	--	AS PER CODE REQUIREMENTS	--		2

SYMBOL LEGEND



C1 REFLECTED CEILING PLAN  
3/8" = 1'-0"

Architect:



ITEMS SHOWN ARE DIAGRAMMATIC AND ARE SHOWN FOR THE LIMITED PURPOSE OF INDICATING PROPOSED LOCATIONS OF THE DESIGN. CONTRACTORS SHALL PROVIDE WORK IN ACCORDANCE WITH ALL APPLICABLE CODES AND REGULATIONS REQUIRED BY THE AUTHORITY HAVING JURISDICTION. CONTRACTOR SHALL COORDINATE THE INSTALLATION OF NEW SYSTEMS WITH EXISTING SYSTEMS.

Thomas Mc Inerney Architect reserves the right to determine a fair and equitable solution to any problems, mistakes, oversights or hidden damage. Please do not hesitate to phone our office at 319-331-0365, especially immediately upon discovery a conflict with the Scope of Work.

Please do not instinctively produce a solution or proceed with work that would result in a change order requiring reimbursement by the owner.

Any solutions outside this policy shall be with prior approval and will be at the franchisee's or contractor's expense.

Project :

SIGMA NU  
RENOVATIONS

DUBUQUE STREET

Iowa City, Iowa

Project number: 13.41

Note: © COPYRIGHT 2014  
UNAUTHORIZED COPYING, DISCLOSURE OR CONSTRUCTION WITHOUT WRITTEN PERMISSION  
BY THOMAS MCINERNEY, ARCHITECT, IS PROHIBITED.

Issue date:

Date	Description
01.29.2014	BID DOCUMENT
02.20.2014	REVISED BID DOCUMENT

Sheet Title:

REFLECTED  
CEILING PLAN

Sheet Number:

A-903