



General Instructions for Operators

Running Through Trains over the 3rd Sub

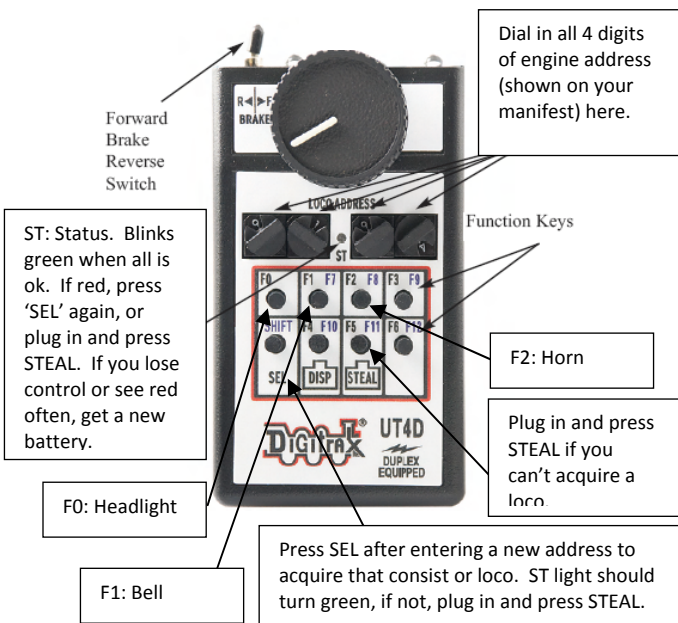
Northbound Trains. Pick up NB trains and paperwork at Heavener. Leave train on main at Watts, **release loco**, leave paperwork in “completed” folder, pick up next SB train and paperwork (from “outbound” folder) there.

Southbound Trains. Pick up SB trains and paperwork at Watts (up the stairs, all the way back). Leave train in Heavener as directed by yard crew, **release loco**. Leave paperwork in “completed” folder, pick up next NB train and paperwork (from “outbound” folder) there.

Releasing locos: when leaving a train, dial up 0000 on your throttle!

Using the Radio Throttles

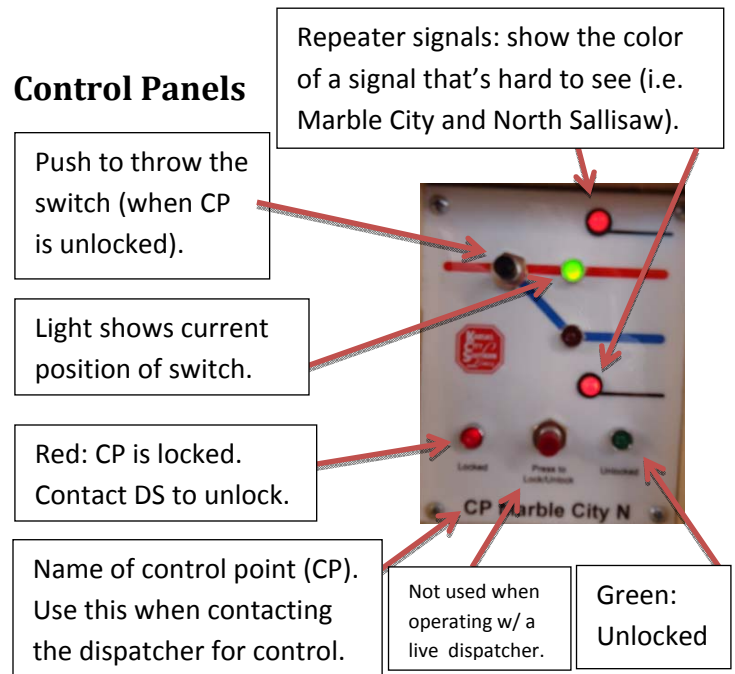
These throttles should not need to be plugged in, even to select and release locos, except possibly at first (if “ST” light is flashing red even after selecting a loco).



Sound Locomotives

- The locos don’t have momentum, but some wait for the sound to come up before they start to move.
- All are speed matched, but when a sound loco is paired with a non-sound, the non-sound unit may start immediately while the sound unit starts after the sound comes up. So start with a low throttle setting, and wait for sound to come up.
- **Turning up the throttle won’t get your loco moving sooner, but when it does start it will lurch to a high speed.** ☹️ So please be patient. 3 secs is typical.

Control Panels



Radios

