

**C1 FLOOR PLAN**  
SCALE: 1/4" = 1'-0"

GENERAL DOOR HARDWARE NOTES:

- A. ALL HARDWARE FINISH TO BE 626/US26D, SATIN CHROMIUM PLATED/BRUSHED CHROME OR SIMILAR FINISH.
- B. UTILIZE SATURN TYPE LEVER.
- C. ALL DOORS TO HAVE THREE (3) SILENCERS (TYPICAL).
- D. PROVIDE BLOCKING AT WALL STOP.
- E. ALL HINGES TO BE FULL MORTISE, BALL BEARING (STANDARD/MEDIUM DUTY) WITH STAINLESS STEEL PIN.

DOOR AND FRAME SCHEDULE				
DOOR NUMBER	SIZE-PR WxH	NOTES	HARDWARE	SET
100A	3'-0" x 7'-0"	1,5	-	-
101A	PR 3'-3" x 8'-0"	8	-	-
102A	PR 3'-3" x 8'-0"	8	-	-
103A	PR 3'-3" x 8'-0"	8	-	-
104A	PR 3'-3" x 8'-0"	8	-	-
105A	PR 3'-3" x 8'-0"	8	-	-
106A	3'-0" x 7'-0"	3	3	3
107A	3'-0" x 7'-0"	3,4	2	-
109A	3'-0" x 7'-0"	7	1	-
110A	3'-0" x 7'-0"	7	1	-
111A	3'-0" x 7'-0"	3	3	-
111B	3'-0" x 7'-0"	2,5,9	-	-

DOOR HARDWARE:

SET DESCRIPTION

- LOCKSET: AL SERIES, PRIVACY (AL40S/F76)  
HINGES: IVES, 1-1/2 PAIRS, 4.5x4.5  
CLOSER: LCN 1460-72, HINGE (PULL) SIDE MOUNT, STD COVER  
WALL STOP: IVES, WS447
- LOCKSET: AL SERIES, STOREROOM (AL80PD/F86)  
HINGES: IVES, 1-1/2 PAIRS, 4.5x4.5
- LOCKSET: AL SERIES, PASSAGE (AL10S/F75)  
HINGES: IVES, 1-1/2 PAIRS, 4.5x4.5

DOOR AND FRAME NOTES:

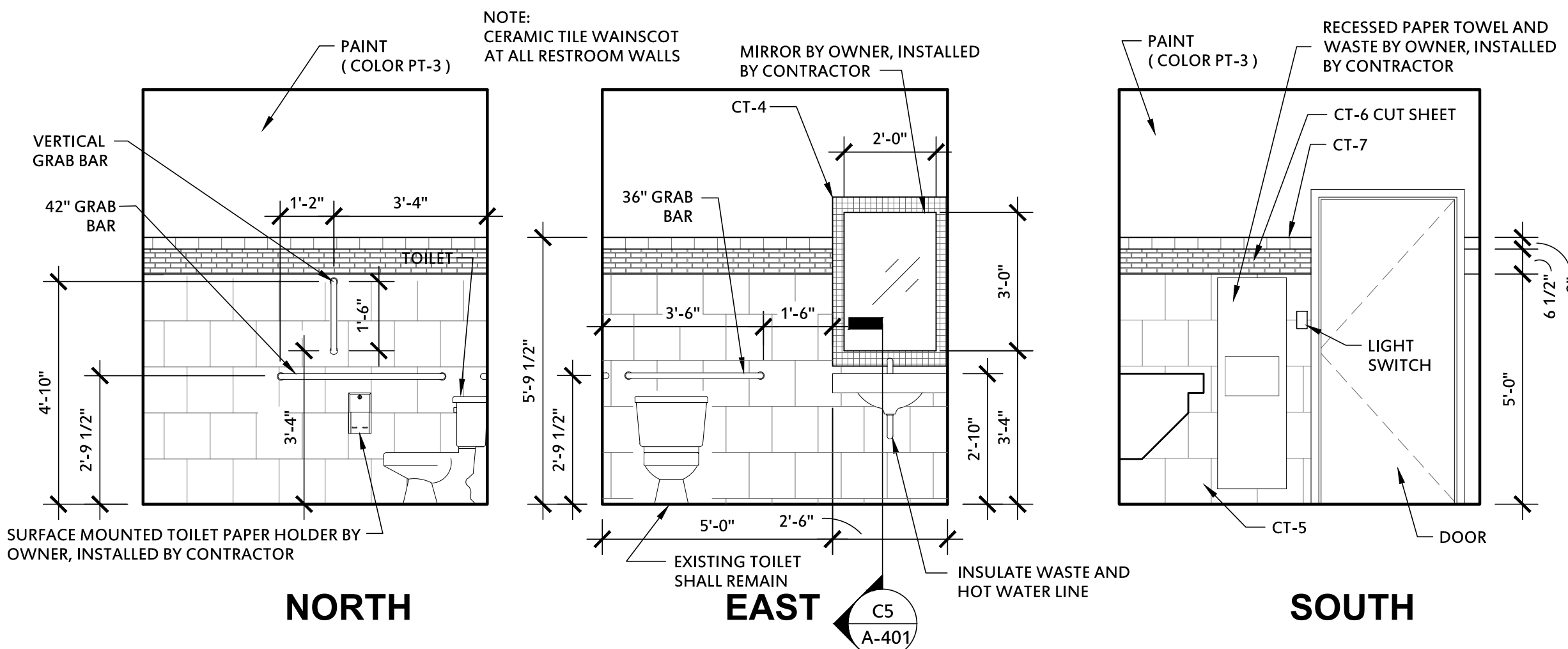
- EXISTING DOOR AND FRAME.
- EXISTING DOOR - PAINT DOOR AND FRAME TO MATCH WALL.
- NEW INTERIOR DOORS SHALL BE 3x7, 5-PLY WOOD WITH WELDED HOLLOW METAL FRAMES. DOOR AND FRAME SHALL BE PAINTED TO MATCH WALL.
- DOOR TO DATA SHALL HAVE A KEVED LOCK WITH ALL LOCKS AND LATCHSETS BEING SCHLAGE.
- REKEY EXISTING SUITE ENTRY DOORS. PROVIDE 10 KEYS.
- INSTALL OPAQUE FILM AT FRONT ENTRANCE UPPER WINDOWS.
- PROVIDE A LEVER CYLINDRICAL LOCK WITH A PRIVACY FUNCTION F76.
- DOOR AND FRAME PROVIDED AND INSTALLED BY SYMPATECO. REFER TO SHOP DRAWINGS FOR ROUGH OPENING SIZE.
- PROVIDE IVES U696 150" VIEWER.

WALL SYMBOL LEGEND

- 20 GAGE 4" METAL STUDS @ 16" O.C. WITH 5/8" TYPE "X" GYPSUM WALL BOARD ASSEMBLY EACH FACE - WALL ASSEMBLY SHALL TERMINATE TO STRUCTURAL DECK ABOVE FULLY INSULATE WALL WITH R-11 BATT INSULATION
- EXISTING 20 GAGE 6" METAL STUDS @ 16" O.C. WITH MOISTURE RESISTANT GYPSUM WALL BOARD ASSEMBLY EACH FACE
- EXISTING 20 GAGE 3-5/8" METAL STUDS @ 16" O.C. WITH 5/8" TYPE "X" GYPSUM WALL BOARD ASSEMBLY EACH FACE
- EXISTING WALL OF DEMISE

GENERAL FLOOR PLAN NOTES:

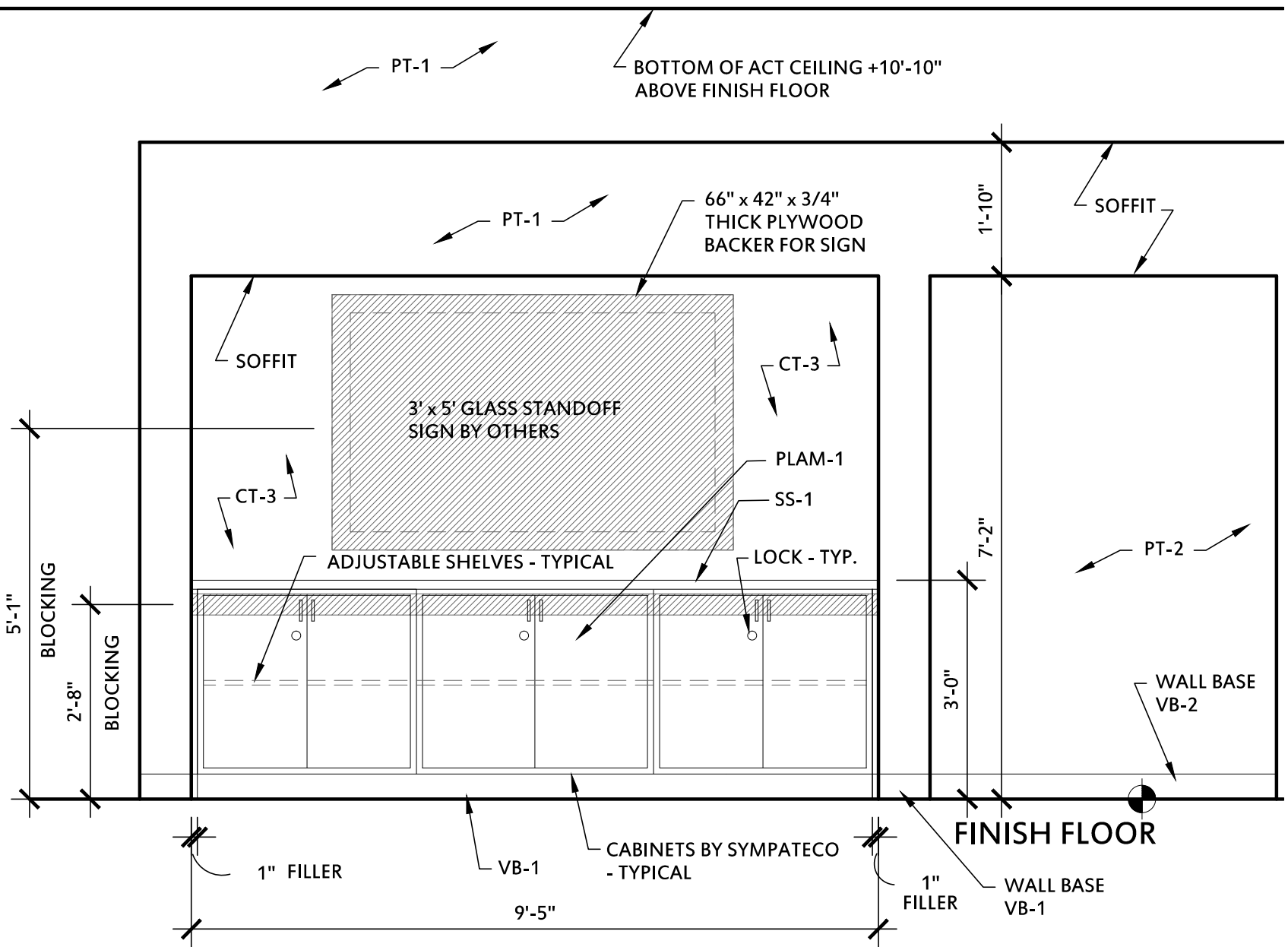
- FIRE EXTINGUISHER SHALL BE 10 lb ABC TYPE WITH SEMI-RECESSED CABINET WHERE SHOWN.
- LOCKERS AND STORAGE SHELVES SUPPLIED BY OWNER AND INSTALLED BY CONTRACTOR.
- CARPET TILE SHALL BE ORIENTED LENGTH-WISE EAST/WEST (TYPICAL)
- ALL CASEWORK SUPPLIED AND INSTALLED BY SYMPATECO.
- WALLS TO EXTEND TO 6" ABOVE FINISH CEILING UNLESS OTHERWISE NOTED.



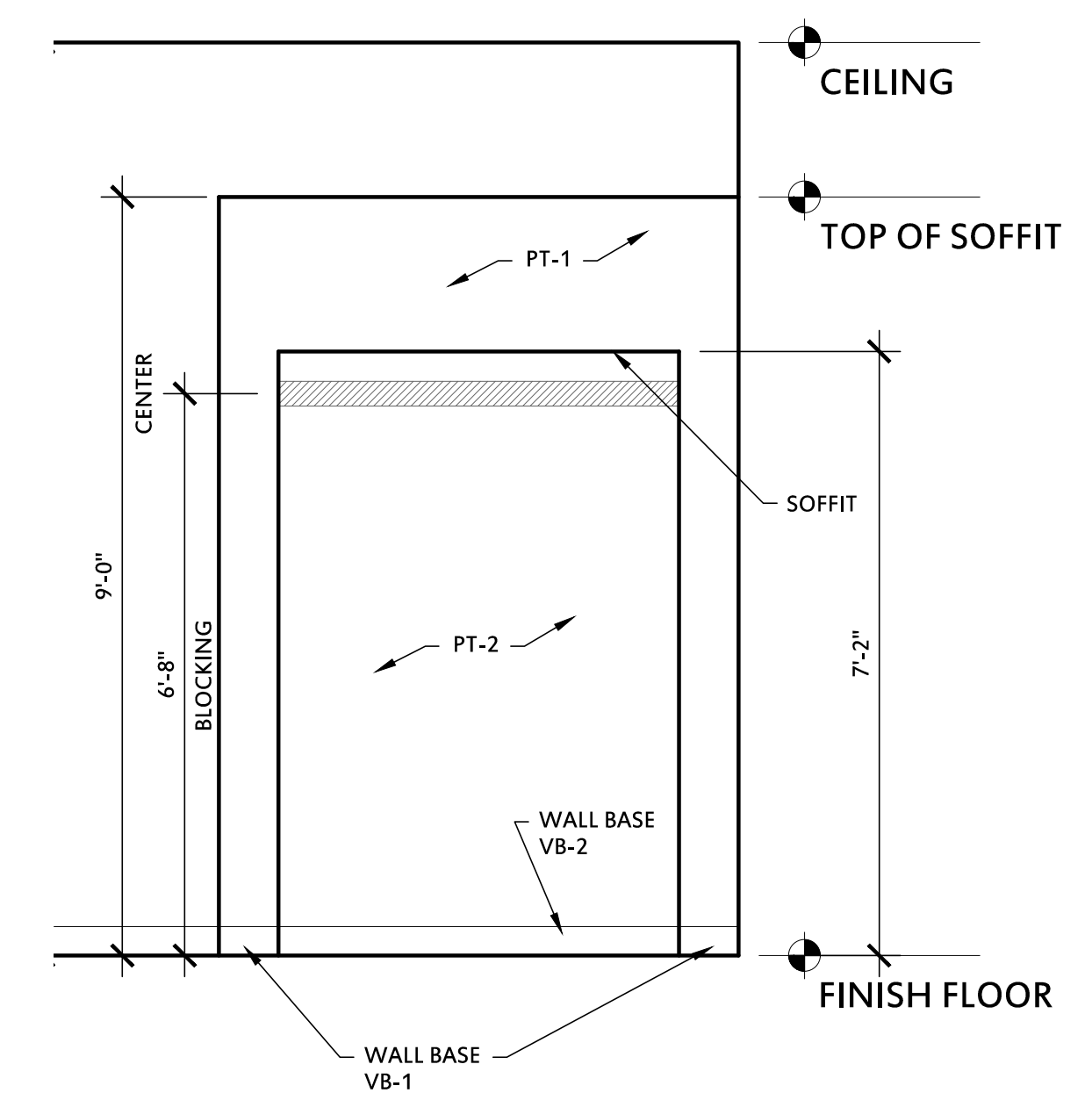
**A1 INTERIOR ELEVATIONS @ RESTROOM**  
SCALE: 3/8" = 1'-0"

ROOM FINISH SCHEDULE										
Number	Room name	Base Mat'l	Floor Mat'l	Ceiling	CEILING	North Wall	East Wall	South Wall	West Wall	Remarks
					HEIGHT					
100	RETAIL	VB-1 / VB-2	CT-1 / CPT-1 / CPT-2	ACT-1	10'-0"	PT-1 / PT-2 / CT-3	PT-1 / PT-2	PT-1	PT-1 / PT-2 / CT-3	UPPER CEILING HEIGHT +10'-10"
101	CONSULT	VB-1	CPT-1 / CPT-2	ACT-1	9'-0"	VWC-1	PT-1	PT-1	PT-3	--
102	CONSULT	VB-1	CPT-1 / CPT-2	ACT-1	9'-0"	PT-1	PT-3	VWC-1	PT-1	--
103	CONSULT	VB-1	CPT-1 / CPT-2	ACT-1	9'-0"	VWC-1	PT-1	PT-1	PT-3	--
104	CONSULT	VB-1	CPT-1 / CPT-2	ACT-1	9'-0"	PT-1	PT-3	VWC-1	PT-1	--
105	OFFICE	VB-1	CPT-1 / CPT-2	ACT-1	9'-0"	PT-1	PT-1	PT-1	PT-1	--
106	STORAGE	VB-1	CPT-1 / CPT-2	--	12'-8"	PT-1	PT-1	PT-1	PT-1	EXPOSED STRUCTURE - NOT PAINTED
107	DATA	VB-1	CPT-1 / CPT-2	--	12'-8"	PT-1	PT-1	PT-1	PT-1	EXPOSED STRUCTURE - NOT PAINTED
108	MULTI-PURPOSE	VB-1 / VB-2	CPT-1 / CPT-2	ACT-1	10'-8"	PT-1	PT-1 / VWC-2	PT-1	PT-2	--
109	RESTROOM	CT-5	CT-1	GYP. BRD.	9'-0"	PT-3 / CT-5 / CT-6 / CT-7	PT-3 / CT-4 / CT-5 / CT-6 / CT-7	PT-3 / CT-5 / CT-6 / CT-7	PT-3 / CT-5 / CT-6 / CT-7	ORIENT LENGTH OF FLOOR TILE NORTH/SOUTH
110	RESTROOM	CT-5	CT-1	GYP. BRD.	9'-0"	PT-3 / CT-5 / CT-6 / CT-7	PT-3 / CT-5 / CT-6 / CT-7	PT-3 / CT-5 / CT-6 / CT-7	PT-3 / CT-4 / CT-5 / CT-6 / CT-7	ORIENT LENGTH OF FLOOR TILE NORTH/SOUTH
111	STORAGE	VB-1	SEALED CONCRETE	PT-3	12'-8"	PT-1	PT-1	PT-1	PT-1	EXPOSED STRUCTURE - PAINTED
112	HALL	VB-1	CPT-1 / CPT-2	ACT-1	9'-0"	--	PT-1	--	PT-1	--

**D4 INTERIOR ELEVATION @ RETAIL BUFFET**  
SCALE: 1/2" = 1'-0"



**D3 INTERIOR ELEVATION @ RETAIL BACK WRAP**  
SCALE: 1/2" = 1'-0"



**D1 INTERIOR ELEVATION**  
SCALE: 1/2" = 1'-0"

Architect:

**Thomas McInerney ARCHITECT**  
1208 Marey Street  
Iowa City, Iowa 52240-3331  
www.thomasarchitect.com  
**319-331-0365**  
thomas@thomasarchitect.com

Thomas Mc Inerney Architect reserves the right to determine a fair and equitable solution to any problems, mistakes, oversights or hidden damage. Please do not hesitate to phone our office at 319-331-0365, especially immediately upon discovery a conflict with the Scope of Work.

Please do not instinctively produce a solution or proceed with work that would result in a change order requiring reimbursement by the owner.

Any solutions outside this policy shall be with prior approval and will be at the contractor's expense.

Project :  
TENANT IMPROVEMENTS  
for  
**Profile by Sanford**  
3010 East 53rd STREET  
DAVENPORT, IOWA

Project number: 14.29

Note: © COPYRIGHT 2014  
UNAUTHORIZED COPYING, DISCLOSURE OR CONSTRUCTION WITHOUT WRITTEN PERMISSION BY THOMAS MCINERNEY, ARCHITECT, IS PROHIBITED.

Issue date:	Date	Description
SEP 3, 2014	REVIEW	
SEP 15, 2014	REVISIONS	
SEP 25, 2014	REVISIONS	
SEP 26, 2014	CITY REVISIONS	

Sheet Title:

**FLOOR PLAN**

Sheet Number:

**A-101**