

The Connection

The Connection

January 2008



President's Message

By: Dawn Michelson, ASCLS-ND President

Hi everyone! I hope you all had a wonderful holiday season and are geared up for what the next year has in store. I want to thank all of you that attended our Region V meeting here in Fargo. A big thank you to the co-chairs, Robin Kuhne and Marie Ackerman. You did a fantastic job! We had a great turnout of attendees, speakers and vendors. I think ASCLS-ND should be proud of our meetings. No matter what city is hosting, there are always extremely dedicated members to do the planning and they are always a great success.

Our ASCLS-ND Board has been busy. Our Student Representative, Victoria Welton, is collaborating with our website manager to jazz up our website and find a system where members can use our website to network easily. Our hope is to make the website as user friendly and informative as possible. If you have ideas for changes or new items you would like to see added, please contact Victoria at Victoria.welton@meritcare.com.

Mary Belanus, our President Elect, along with recruiting members, has been reviving our Scientific Assembly and lining up area contacts throughout the state. I am currently working with our website manager to get job descriptions for the various Board positions in the Society Regulations. This way, members will have easy access to the job description if they are asked to fill a certain position. I also proposed a motion, which the Board passed, to revamp the expense guidelines for attending State, Regional and National meetings as well as Legislative Days. To be finalized, this motion also needs to pass a vote of the general ASCLS members in attendance at the business meeting during the state convention in Bismarck on April 23-25. I encourage you to attend the convention and this business meeting (which is also a great way for members to catch up on what ASCLS-ND has been doing for its members in the last year). I hope to see you there!

The Board also passed a motion to accept advertisements for laboratory related job openings in the newsletter "The Connection" for a small fee. It's a great way to recruit, so contact our newsletter editor, Shannon Jongeward at shannon@gra.midco.net if you have questions or wish to place an ad.

Inside this issue:

President's Message 1-2

Student's Corner 2

Region V Report 3

Fall Board Meeting minutes 4

Treasurer's Report 5

Membership Report 6

New Members 7-8

Nominations 9-10

Upcoming Events 10

Current Member List 11

Leadership Roster 12

President's Message continued from page 1....

One of our main goals this coming year is to get some "new blood" infused into our state leadership. I think new members are urged to join and then tend to fall through the cracks. The same thing happens to some that have been ASCLS members for many years and yet until now, have not had the desire to become involved. They want to participate but don't know how to go about it. When I joined ASCLS I knew I wanted to contribute more than just paying my dues. With the help of mentors, I decided to take "baby steps". First, I volunteered to moderate at a spring meeting, then I served on a registration committee, got involved on the ASCLS-ND Board, was a delegate to a national meeting and things progressed from there. So, you certainly don't have to jump into the deep end first and you don't have to do it alone. There are people to guide you just like they did for me. I can honestly say it has been so rewarding giving back to ASCLS and my profession by volunteering. ASCLS provides laboratorians with a unified voice and is getting us the respect we deserve. If you have any questions or would like to learn more about opportunities available in ASCLS-ND, please e-mail me or Mary Belanus at medtecdawn2@msn.com and Mary.Belanus@northlandcollege.edu and we can help get you started. You won't regret it!

Dawn Michelson
ASCLS-ND President



STUDENT'S CORNER

By: Victoria Welton, ASCLS-ND Student Rep

I can already predict 2008 is going to be a busy year for ASCLS students and young professionals. At the national level, many subcommittees are being formed to focus on matters currently concerning us as young professionals. Promoting and recruiting new students into the profession, communication of students throughout each region and nationally, and membership renewals are our main focal points for 2008.

One of my main focuses for the year is on recruiting students into the CLS profession. I have participated in a few health career fairs in the area in which I have interacted with high school students to get them thinking about a CLS profession. Most recently I (along with other ASCLS young professionals) was involved in an interview/assessment which will be used in high school career prep classes all over the country. To complete this, I first took an assessment test that asked me about my personal skills and interests. This same test will be given to high school students and if their answers match up with our responses, CLS will show up as being one of their most compatible career choices. Secondly, I was interviewed over the phone about why I decided to join the profession. If students have CLS as one their most compatible careers, a readable version of the interview will go along with their assessment so they can read more about what we do on a day to day basis, as well as what job opportunities they will have if they graduate with a degree in CLS. Hopefully these assessment tools will be used frequently by high school teachers so it gives us another opportunity share the profession. So far I feel like my year is off to a great start and hopefully I will be able to keep the momentum going.

Young professionals have so many great ideas already at work, and I think 2008 will be a great year for us to accomplish our goals!

Thank you,
Victoria Welton, MT (ASCP)
Student Representative ASCLS-ND



Filling Your Professional Life with Value... Here's to a GREAT 2008!

By: Lezlee Koch, ASCLS Region V Director

Another year is coming to an end so as we get ready to bid farewell to 2007... we can begin preparing for **A GREAT 2008 in ASCLS!** Even though there is much work yet to be done for our profession and it's professionals, and numerous obstacles still to overcome, there is no reason to be dismayed. The progress and tasks undertaken this past year in ASCLS have been tremendous! ASCLS, through the strength of its grassroots members, committees, leaders and collaborative efforts has made an impact on our future and works continuously to assure that quality laboratory services are available for generations to come. Just a few of the accomplishments include continued progress on the Professional Doctorate Program, Levels of Practice White Paper, Patient Safety and developing tomorrows leaders through our new Leadership Academy program. Our professional voice continues to be strong through our Government Affairs continued efforts to battle Competitive Bidding and provision of expert input into the MUE process. Our Consumer Information Response program continues to grow and is currently responding to approximately 45,000 email requests per year for information on clinical laboratory testing. Student and new professional members involvement in ASCLS continues to be strong and beneficial to "who we are today and ultimately helping define where we want to be tomorrow"!

On the regional level, our continued mantra "**ASCLS's Voice, Value & Vision... Is Alive in Region V**" keeps us moving forward through information sharing and implementing change based on valuable input from our states and our grassroots members. We have implemented mechanisms for efficient electronic dissemination of information, developed a regional web page, established standardized operational policies, and are strategically planning ways to increase the professional visibility and value of ASCLS to our current members and to all potential future members.

Every accomplishment achieved and every task started by ASCLS over the past year, leads us to multitudes of new opportunities in the years to come. As each new challenge and opportunity arises, we can choose to act and be involved or we can choose to be inactive and apathetic....**BUT....** It will only be through our efforts and involvement that true professional value will allow our lives to grow richer. We must remember that to wish for a life free of challenges is to wish for a life in which it would be impossible to find any kind of real fulfillment.

Here's to **A GREAT 2008 in ASCLS!** May you find joy and fulfillment in taking on professional challenges, identifying opportunities and giving back to your profession through involvement in ASCLS. Remember.... when much is asked of you and you willingly give of yourself are the moments when great richness will be a part of your professional life.



FALL BOARD MEETING MINUTES

ASCLS-ND Board Meeting

October 2, 2007

Ramada Inn, Fargo ND

Members present: Mary Belanus, Dawn Michelson, Sue Hollister, Robin Kuhne, Tori Welton, Jessica Irion, Shannon Jongeward, Leola Olson, and Stacy Askvig.

1. Secretary report from the spring board meeting were read and approved.
2. Membership development report was given by Mary Belanus. As of August there were 101 members and by September there were only 80 members. Mary made lists of memberships that had lapsed and had board members help her find out why people left. Mary has called lapsed members to find out the reasons why they haven't renewed.
3. Leadership development report was given by Stacy. Stacy wrote an article on how to approach representatives in Washington DC. Leadership academy was discussed. ASCLS-ND has extra money to send people. ASCLS-ND needs to do a better job of promoting them selves and hold onto new members. Some ideas are to actively engage members by giving them things to do within the organization. Other ideas were to have area contacts host meetings to discuss issues with members.
4. Tori reported about a national facebook group for student members to help keep student members in touch with each other.
5. First year professional. Kari Kempel was invited to fill in for Kim Meyer who is unable to fulfill the duties of the position. The board members voted unanimously to have Kari fill the position for the remainder of the year.
6. Shannon was contacted from NAS Recruitment about advertising for employment in The Connection. Shannon will find out more information as to what kind of jobs they are advertising. The board will vote on what to charge for an ad. The Connection is available to anyone. If a non-member is interested they can request that an e-mail copy be sent to them.
7. Website update: the website now had updated bylaws and SOP's. Blackboard was discussed. Tori and Kari will look into how other states utilize the message boards.
8. Leadership Academy. If ASCLS-ND members are accepted the organization will help pay for some of the expenses.
9. Expense guidelines. Dawn handed out the guidelines and want input on change. This issue will be revisited at the spring meeting.
10. Leola reported on the 2008 spring meeting in Bismarck. Planning is beginning.
11. New business: Leola suggested that the organization have an archivist. This person would be a non-voting member that helps keep up with meeting minutes and changes in by-laws. The information would be kept in a central location and if there were questions it would be easily accessible. This will be discussed at the spring meeting.

Respectfully submitted,
Sue Hollister, Secretary.



Treasurer's Report



ASCLSND Checking Account

Interest Earned	\$43.45	Checking	Beginning Balance	\$1,332.34
Meeting Income	\$14,546.79		Income	\$15,015.24
State Dues	\$425.00		Expenses	\$11,945.60
Total Income	\$15,015.24		Ending Balance	\$4,401.98

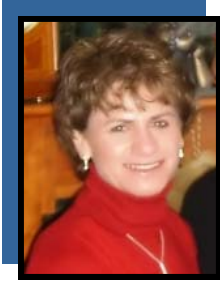
EXPENSES

Annual Dues	\$10.00
Awards	\$170.16
Board Meeting	\$100.00
Legislative days	\$2,417.98
Meeting Expense	\$130.06
Mileage	\$466.49
National Meeting	\$4,082.09
National Meeting-Airfare	\$1,715.00
Newsletter	\$165.67
Office supplies	\$15.60
PACE	\$250.00
Region Dues	\$279.00
Science Fair	\$50.00
Spring Meeting	\$216.50
Website	\$377.05
Total Expenses	\$10,445.60

MONEY MARKET SAVINGS

Beginning Balance	\$7,246.30
Interest Earned	\$258.60
Ending Balance	\$7,504.90

12 Month CD	\$4,724.07	5/16/2007	4.75%
12 Month CD	\$7,969.47	12/7/2007	4%



Membership with a Passion

Mary Belanus, President-Elect ASCLS-ND

Membership Chair

“We may affirm absolutely that nothing great in the world has been accomplished without passion.” *George Hegel*

What you are passionate about? I bet your job is the first thing on the list, right? As I write this article, I want to again express my passion for ASCLS and how my membership has given me passion in my job and in my professional career. I get excited about ASCLS, in fact so excited that if I didn't have spell check, I know this article would be full of spelling errors.

On the membership development front, Region V will be holding a planning meeting with Diane Peterson – Region V Membership Chair along with representatives from ND, MN, SD, and Wisconsin. We will be meeting via conference call to brainstorm and gather information on how we can increase our membership. The state of Hawaii has increased their membership by 35% and they accomplished this by increasing the fee in the non member category at their state meetings. The difference in the cost of attendance between the non member and member has been enough to encourage joining ASCLS. Can this work in North Dakota? We have fabulous state meetings with quality topics, many exhibitors and great networking opportunities. Who wouldn't want to come to our meetings?

Do you have ideas on how we can increase our states' membership? Think back to why you joined ASCLS. Talk to your coworkers and share your story about what ASCLS has done for you. Invite your coworkers to become a member of one of the best professional organization in laboratory medicine. Sometimes a simple invitation is all that is needed.

Our current membership includes 97 members. A breakdown of the categories is as follows: 1- COL (Collaborative), 1 – EM (Emeritus), 5 - FYP (First Year Professionals), 43- PFI (Professional 1 Category), 38 – PF2 (Professional 2) and 9 STU (student) members.

Membership retention is also a concern for our state and many other states. As I called lapsed members, I wanted to know why they did not renew their membership in ASCLS and a common theme was that I wasn't involved in anything. Here is my invitation to all of you members out there, get involved. We are looking for people to fill out our leadership in scientific assembly chairs, area contacts, etc for next year. These are small jobs that can help in a big way. It is not just getting people to join this wonderful organization; it's finding a way to get members involved. If you are interested in any of these positions please contact me at mary.belanus@northlancollege.edu and I can give you more information. You will start to see the names of clinical laboratorians that have volunteered for some of these positions showing up in the leadership section. The invitation is out there for all to get involved. Join me and others in making ASCLS-ND a better professional organization.

“ Never be afraid to do something new. Remember, amateurs built the ark; professionals built the titanic.” *Anonymous*

Welcome New ASCLS-ND Members

I'd like to introduce our newest members to our ASCLS family and you can read more about some them featured in the Bio section on members. Congratulations to these professionals and welcome to ASCLS - ND. New members as of July 1, 2007 and place of employment:

*Mary Belanus, Pres-Elect ASCLS-ND
Membership Chair*

Grand Forks Area

Elisabeth Greer – Altru Hospital
Chris Triske – UND Instructor-CLS Department
Brooke Solberg – UND Instructor-CLS Department
Laurie Johnson – Northland Community & Technical College (NCTC) - Student
Greg Mack – NCTC - Student
Debby Olson – NCTC Student
Tami Oxton – NCTC - Student

Bismarck Area

Kali Hardy - Rasmussen College
Tammy Renner - Rasmussen College

Other ND Cities

Chad LaRocque – Presentation Medical Center, Rolla
Jane Stenvold – Jacobson Memorial Hospital, Elgin
Carolyn Lennick – Richardton Memorial Hospital, Richardton
Jim Svihovce – Mercy Medical Center, Williston
Eric Kessel – NDSU Student, Souix City, IA

Fargo Area

Susan Finneman – Rasmussen College
Lynne Joachim – Pracs
Farhad Mustafa – NDSU – Student
Crystal Sellhammer – NDSU - Student

Feature: Bios on New Members

Submitted by featured new members of ASCLS

Chris Triske, MS, MT (ASCP)

UND Instructor-CLS Department

I received my BS in CLS in 2003 from UND. I worked for two years at Mayo Clinic in Rochester, MN in the Human Cellular Therapy Lab. Our primary focus was peripheral blood stem cell/bone marrow transplants. After a few years away from my hometown of Grand Forks, (and the entire state of ND) I began to miss it. I found my way back to the UND CLS program in 2005, when I was hired as a Graduate Teaching Assistant. For two years I was responsible for setting up and teaching laboratory sessions, grading papers, as well as additional departmental duties. I also have helped Bob Porter with teaching at Mayo Clinic as a part of the UND-Mayo cohort since 2005. In May of 2007, I received my Masters Degree in CLS. In June 2007, I was hired as an instructor in the department. The courses I am responsible for are Introduction to CLS and Urinalysis. In addition to these teaching responsibilities, I am the Laboratory Education from North Dakota (LEND) coordinator and will continue to assist with the UND-Mayo Cohort project.

Jane Stenvold

Jacobson Memorial Hospital, Elgin, ND

I have three adult children and four grand children that are the light of my life. I have a daughter and family in North Dakota, a daughter and family in Texas and a son and daughter-in-law in Iraq. I have been a tech since 1990. I have worked as a traveling tech for about four years. I am presently the supervisor of a smaller hospital lab and enjoying my job and the people I work with.

Brooke, Solberg M.S., MT (ASCP)

UND Instructor-CLS Department

Hi! My name is Brooke (Juntunen) Solberg and I am excited to be getting involved with ASCLS! I grew up in Rolla, ND and attended college at UND, graduating in 2003 with a degree in Clinical Laboratory Science (CLS). I completed clinical rotations and worked as a laboratory aid at Interpath Laboratories in Pendleton, OR. I then moved to the Minneapolis/St. Paul area and worked at Abbott-Northwestern hospital in the Hematology/Coagulation department for almost two years. After that, I happily moved back to North Dakota to pursue a Master's degree in CLS from UND. Also during this time, I worked as a generalist at Altru Hospital Lab in Grand Forks and as a graduate teaching assistant in the CLS department at UND. After completing my graduate degree in May of 2007, I was hired as a full time instructor in the CLS department at UND, with duties including categorical coordinator and instruction of hematology, coagulation and immunology course-work. In June of 2007 I got married and moved into my husband's home, which has encompassed most of my non-work time since then! In my spare time, I enjoy spending time with my family, singing in our church choir, playing recreational sports and attending as many UND sporting events as possible!

Elisabeth Greer, MLT (ASCP)

Altru Laboratory, Grand Forks

It all started with my twin sister taking a Intro to Lab Medicine, class at Northwest Technical and Community College, EGF.. She then convinced me to try the class and I loved it. I graduated with my twin sister from Northwest Technical and Community College (now Northland Community and Technical College), with my MLT degree. Mary Belanus (and Paula Bowman) were great teacher(s). I have worked at Altru, for the past 4 years, as a generalist in Chemistry, Hematology, and Microbiology. My twin sister also works at Altru, which makes it very interesting on the current employees and new ones. I loved to learn so much, and wanted the chance to work more in Microbiology and Transfusion Services, so I decided to go back to school and get my MT degree. I will be starting my last semester on January 7th, Yeah! I also stay busy with my family, my husband Tim, my 8 year old daughter Cassidy, and my 2 year old son Dylan. I have been able to attend a couple of the state conferences, and I loved them, meeting new people and learning. I decided what better way to get involved in my profession, so I decided to become a member. I hope to have many stories about being a member, like some of you do!

Eric Kessel, MT Student

NDSU Intern at Sioux City, IA

I am attending St. Luke's College in Sioux City, Iowa. At St. Luke's I am striving to achieve my medical laboratory technology degree. I am originally from Bowman, North Dakota. I lived there the majority of my life, with the exception of my college years in Sioux City. While attending Briar Cliff University for majors in Chemistry and Medical Laboratory Technology I also ran cross country and track. I like to stay very active and spend most of my time running or go out with friends. I have enjoyed my internship in Sioux City and love the laboratory setting. I joined the ASCLS-ND because I wanted to get involved and stay well informed with upcoming news concerning future issues in the medical laboratory field.

Tammy Renner, MS, MT (ASCP)

Rasmussen College, Bismarck, ND

I spoke with Kali Hardy about joining ASCLS-ND a few months ago when I was asked to help Rasmussen (formerly Aakers) college with the certification process of their MLT/CLT program. I interned at St. Alexius in Bismarck and started working at the Mandan hospital after my internship. I also worked at the Bismarck Hospital which is now MedCenter One for 15 years. I taught in the MLT program at BSC during that time in Phlebotomy, Hematology and Coagulation. I received my MS in Medical Technology from UND in 1994. In 1999, I started work for Baxter Healthcare Inc for the next 7 years. Work was very time consuming and I traveled quite-a-bit, so involvement in the state or national MT/MLT organizations was very difficult. After speaking with Kali I decided it was time to rejoin some of these organizations again. My hopes are to update myself in my field again to help with the program at Rasmussen and also in my work at the state in utilization review. I have been working at the State of ND in the utilization review area since September 2007. It has been great getting back into my medical field again.

Susan Finneman, MT(ASCP)

Rasmussen College, Morehead, MN

I am a native New Englander. I was born in Providence, Rhode Island and went on to graduate from Northeastern University in Medical Technology in 1969. I had a wonderful first job at Rhode Island Hospital and then at the Miriam Hospital. At RIH, I worked in the GI Dept. At the Miriam, where I was for 7 years, I worked in Microbiology (which I just loved). I took a sabbatical while I my children were very small and stayed at home with them. Our family moved to Cleveland, Ohio in 1979 and I took a part-time position with a small hospital in the Microbiology Dept. That hospital eventually became part of the famous Cleveland Clinic. I worked there for 8 plus years. I had a unique opportunity to work at a private college for the next 10 years. My school was called Remington College. I began a program for Medical Assistants. I was able to bring my lab training along with me because my students needed to become proficient in phlebotomy, office Chemistries, Hematology and Urinalysis. I retired from Remington in December of 1999 and moved to North Dakota. I actually missed my lab affiliations so I took a very part-time position in the lab at MeritCare, the number one facility in North Dakota. It was there that I had a patient that recognized my name and my skills and offered me a chance to come out of retirement and begin a brand new program for MLT/CLT students at Rasmussen College in Moorhead, MN. I am just getting my feet wet there and decided to join ASCLS in order to begin having a network of professionals that I, too, could call upon.



2008 ASCLS-ND Nominations

It's that time of year again! We are in need of dedicated members who would like to become more involved in our professional society. If you know of anyone, including yourself, who would like the opportunity to make a difference and serve on the ASCLS-ND Board of Directors, let us know. The positions we have up for elections for the 2008-2009 year are:

President-elect: 1 year term

- Becomes familiar with presidential duties to transition into the position the following year
- Assists the President as needed and serves as CEO in absence of the President
- Develops knowledge of past and present Society activities
- Chairs ASCLS-ND membership development committee, and serves as liaison to LEND advisory board
- Co-chairs ASCLS-ND delegation at the annual meeting of ASCLS House of Delegates
- Prepares budget for the following year
- Attends the Region V council meeting, business meetings, and ASCLS annual meeting

Secretary/Treasurer: 2 year term

- Records and files minutes for all meetings
- Maintains a checking and savings account for the society
- Prepares and presents Treasurer's report at the annual business meeting at fiscal year end
- Maintains a current list of all active ASCLS-ND members
- Receives scholarship applications for CLS students and submits to the Education Committee Chair

Nominations Chairperson: 2 year term

- Submits a list of vacant positions and job descriptions to the Connections Editor
- Contacts nominated candidates and prepares a display for the annual ASCLS-ND meeting
- Prepares absentee voting ballots and ballots for the state meeting
- Conducts the election at the ASCLS-ND annual meeting

Delegate: 1 year term

- Becomes familiar with issues presented to the House of Delegates at the annual ASCLS meeting
- Attends all meetings of the House of Delegates and other meetings as requested by the chair of the ND delegation
- Submits an article for publication in the fall issue of the ASCLS-ND newsletter

Board Member at Large: 2 year term

- Serves as member of ASCLS-ND Board of Directors
- Serves as committee chair and other leadership roles as requested by the President

We will be accepting nominations until March 1st, 2008. Please include the name, e-mail address, work phone number, and place of employment of the nominee. Please submit nominations to:

Robin Kuhne
ASCLS-ND Nominations Chair
MeritCare Microbiology Laboratory
Fargo, ND
701-234-2113
robin.kuhne@meritcare.com

Upcoming Events

ASCLS-ND Annual Meeting

SPRING BREAK in '08

April 23-25, 2008

Radisson Inn Bismarck

Legislative Symposium

March 17th & 18th, 2008

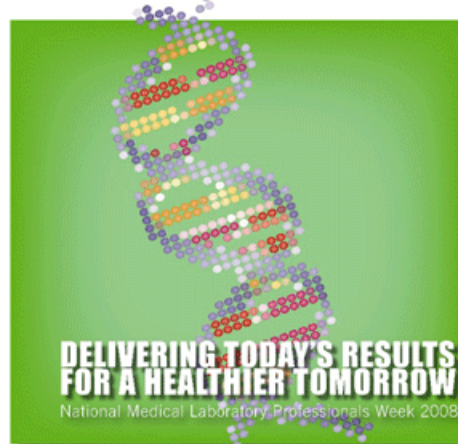
Washington, D.C.

Annual ASCLS Meeting

July 29th-Aug 2nd, 2008

Washington, D.C.

National Medical Laboratory Professionals Weeks



April 20th-26th, 2008

Publication Submission Deadline

The publication submission deadline for articles for the next issue of The Connection is Monday May 19th, 2008. Submit any articles to The Connection Editor:

Shannon Jongeward

shannon@gra.midco.net

Current Member List

Jessie Anderson-Fargo	Liane Anderson-Minot	Bryana Arnold-Fargo	Stacy Askvig-Minot
Cynthia Ault-Jamestown	Renae Baltzer-Bismarck	Carrie Baumgartner- Fargo	Mary Belanus-East Grand Forks,MN
Tara Bondley-Bismarck	Laura Bossert-Bismarck	Linda Bossert-Minot	Thomas Braaten-Hettinger
Heidi Brosius-Fargo	Nancy Buchholz-Bismarck	Deborah Burke-Bismarck	Rochelle Cariveau-Grand Forks
Karen Cisek-Grand Forks	Mary Coleman-Grand Forks	Sharon Daniels-Sidney, MT	Mary Dhuyvetter-Noonan
Nikki Dillmann-Bismarck	Tish Elliott-Valley City	Jeanette Festvog-Rolla	Susan Finneman-Moorhead
Pamela Fitzgerald-Beulah	Pat Geistler-Bismarck	Elisabeth Greer-Grand Forks	Linda Gylland-Fargo
Patricia Hanggi-Horace	Kali Hardy-Bismarck	Marlys Harrison-Bismarck	Alice Hawley-Fargo
Nina Hintz-Jamestown	Terri Hintz-Grand Forks	Jean Dean Holland-Grand Forks	Sue Hollister-Fargo
Michael Holm-Tioga	Julie Hoverson-Cooperstown	Sandra Howick-Hettinger	Jessica Irion-Grand Forks
Bonnie Jangula-Fargo	Lynne Joachim-Fargo	Laurie Johnson-Luverne, ND	Kathy Jones-Fargo
Shannon Jongeward-Grand Forks	Kari Kempel-Fargo	Renee Kennedy-Fargo	Ronda Kercher-Fargo
Eric Kessel-Bowman	Robin Kuhne-Fargo	Tracie Laine-Bismarck	Jennifer Lamoureux-San Diego,CA
Chad LaRocque-Rolla	Toscha Larson-Grand Forks	Carolyn Lennick-Richardton	Evonne Lopez-Grand Forks
Amber Lundell-Fargo	Greg Mack-Grand Forks	Lori Martell-Belcourt	Laurie Massey-Dickinson
Laura Mastel-Northwood	Sandra Matthey-Fargo	Dawn Michelson-Fargo	Farhad Mustafa-Fargo
Carol Nilles-Casselton	Debby Olson-Grand Forks	Leola Olson-Bismarck	Tami Jo Oxton-Finley
Ruth Paur-Grand Forks	Patricia Person-Fargo	Karen Peterson-Grand Forks	Kimberly Peterson-Mandan
Ron Piatz-Bismarck	Garis Pollert-Northwood	Rober Porter-Grand Forks	Mindy Pulkrabek-Mandan
Elaine Ramstad-Grand Forks	Mindy Raulston-Bismarck	Tammy Renner-Bismarck	Delilah Rosecrans-Fargo
Frances Sailer-Grand Forks	Janna Schill-Grand Forks	Emily Schroeder-Williston	Janice Schuh-Grand Forks
Heather Sease-Bismarck	Crystal Sellhammer-Fargo	Brooke Solberg-Grand Forks	Elaine Sommers-Breckenridge
Jane Stenvold-Elgin	Jim Svihovce-Williston	Susan Tidball-Beach	Danielle Tofte-Williston
Chris Triske-Grand Forks	Angela Jo Uhlich-Bismarck	Jane Voss-Fargo	Margie Vossler-Bismarck
Terri Walker-Fargo	Victoria Welton-Fargo	Renda Wilson-Minot	



Leadership Roster 2007

President:	Dawn Michelson	521 21st Ave S Fargo, ND 58103	701-237-9705	medtecdawn2@msn.com
President-Elect	Mary Belanus	2041 8th St SE East Grand Forks, MN 56721	218-773-0281	mbelanus@hotmail.com
Past-President	Stacy Askvig	810 45th Ave NE Minot, ND 58703	701-839-1847	saskvig@medicine.nodak.edu
Secretary-Treasurer	Sue Hollister	1757 157th Ave SE Hunter, ND 58048	701-874-2153(H) 701-234-2107(W)	hollister@polarcomm.com
Board Member	Jess Irion		218-791-8440	jirion@altru.org
Board Member	Shannon Jongeward	3701 20th Ave S Grand Forks, ND 58201	701-775-9330	shannon@gra.midco.net
Nominations Chair	Robin Kuhne	6102 24th St S Fargo, ND 58104	701-298-8470	Robin.kuhne@meritcare.com
Student Representative	Victoria Welton	801 Broadway N Fargo, ND 58122	406-581-5740	Victoria.Welton@meritcare.com
Region V Director	Lezlee Koch			lezleek@sio.midco.net
Leadership Development	Stacy Askvig	810 45th Ave NE Minot, ND 58703	701-839-1847	saskvig@medicine.nodak.edu
Membership Development	Mary Belanus	2041 8th St SE East Grand Forks, MN 56721	218-773-0281	mbelanus@hotmail.com
New Professional	Kari Kempel	3547 Eagle Run Dr West Fargo, ND 58078	701-351-4334	Kari.kempel@meritcare.com
Publications Editor	Shannon Jongeward	3701 20th Ave S Grand Forks, ND 58201	701-775-9330	shannon@gra.midco.net
Pace Coordinator	Mary Coleman	1517 Oak St Grand Forks, ND 58201	701-777-2652(W) 701-775-3664(H)	mcoleman@medicine.nodak.com
Government Liason	Elaine Ramstad		701-775-3426	datsmar@msn.com