



MY EXPERIENCES

Calibrating

- *The first pantograph I quilted with Quilt Path was very disappointing.*
- *Everything looked good on the design screen. The pattern rows were nicely spaced; nearly touching, exactly like I wanted.*
- *However, when I stitched my quilt, the rows were “miles” apart. I had so much empty space and couldn’t understand why. (Luckily it was my own quilt.)*
- *Then, I learned about calibrating or screen scaling, as it’s known in Quilt Path. Solved that problem.*

Roll Diameter

- *Also, when I would get to the last row of a quilt, my measurements were several inches off, so I had to skew a large row into a small space, or sew off the quilt, if I had enough space without hitting my zippers.*
- *I did learn that you can reset your safe zone so that QP will only stitch to the bottom of the zone, leaving you lots of jump stitches that can’t be “optimized” out.*
- *But once I learned about setting the Roll Diameter all that changed. Now my last row is almost never off by more than an inch or so.*
- *I do allow for shrinkage when entering the total height of the quilt. I find that by reducing the height about ½” for every 40 inches works out to be close enough for me. That’s using cotton batting like Quilter’s Dream Select or Warm and Natural. Other battings may require different allowances.*

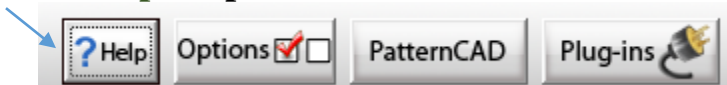
In order to have a pantograph that is true to size, that stitches as shown on the design screen, and with the last row ending at least close to where it should, there are several steps that will make you successful.....and happy with your results.

BEFORE YOU GET STARTED ONE: Calibrate your machine. In *Quilt Path* it is referred to as Screen Scaling. *This screen scaling or calibration will get you more exact measurements, which is important when fitting designs and pantographs. But it will also allow for what's stitched on your to mimic what's portrayed on the screen.*

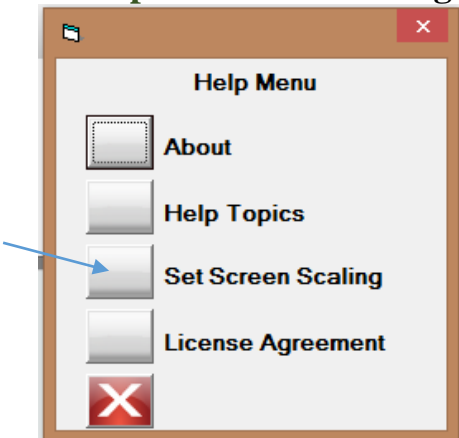
1. **Measure and cut** a piece of paper 3" square. You could use a 3" x 3" Post-it Note.
2. Within **Design and Create**, **Tap Pantograph**. You may be asked to Set Safe Area; if so, follow those prompts.

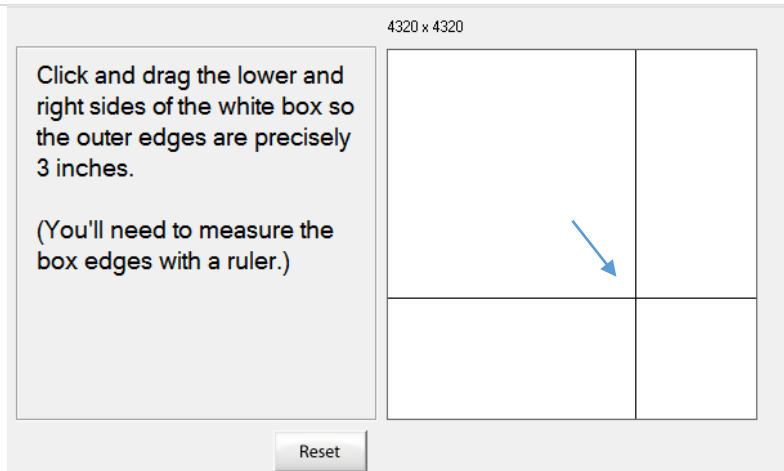


3. **Tap Help**



4. **Tap Set Screen Scaling**





5. **Place** the 3” square paper on the screen that appears.
6. Using your fingers or stylus, **drag** the bottom right intersecting corner, portrayed on the screen, down to match the 3" square of paper.
7. **Tap OK.**

It's DONE. Now you can get correct measurements using your ruler and a true screen display. So that *“What you see is what you get.” This will be extremely helpful to you.*



BEFORE YOU GET STARTED **TWO**: **Set your Roll Diameter.** Don't skip this step. This makes a **HUGE** difference when you get to the last row of your pantograph. *Once I learned about this, my last row was never off by more than an inch or so.*

To allow for shrinkage, I also deduct a small amount when entering the total height of the quilt. I find that about 1/2" for every 40 inches of height works just about right.

To get to the roll diameter setting, we need to open or design a quilt. To keep you from having to design a quilt, I'm attaching a file that contains a very simple quilt you can open. It's called: **Cat and Ball Quilt.**

In file manager, **Copy** the Cat and Ball Quilt file to the Quilts folder of Quilt Path. *That's where QP automatically looks for quilt files. Once the file is there, proceed as shown below.*

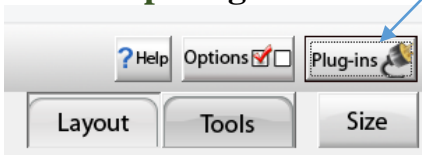
1. Within **Select and Sew, Tap Quilt**



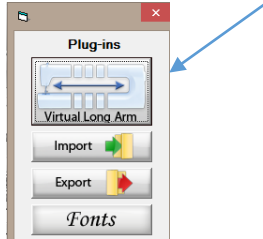
2. **Highlight and Open the Cat and Ball Quilt.** **OR** you can place some designs in the blocks of the quilt and **Tap Quilt.**



3. **Tap Plug-ins**

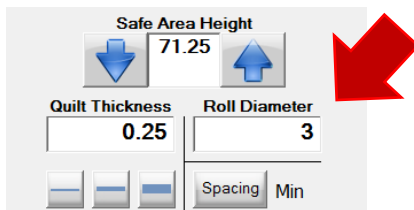


4. **Tap Virtual Long Arm.**



5. **Enter** your **Roll Diameter.**

*If you have a **Millie** or **Freddie** with a **Deluxe Table**, **enter 3 inches**, as shown below.
If you have a **Lucey** or **Lenni**, with a **Standard Table**, **enter 2.5 inches**.*



Now that your roll diameter is set, you can close out the Quilt. You will be so glad you entered this setting. Notice you can also set your safe area height and quilt thickness.....I haven't delved there yet.

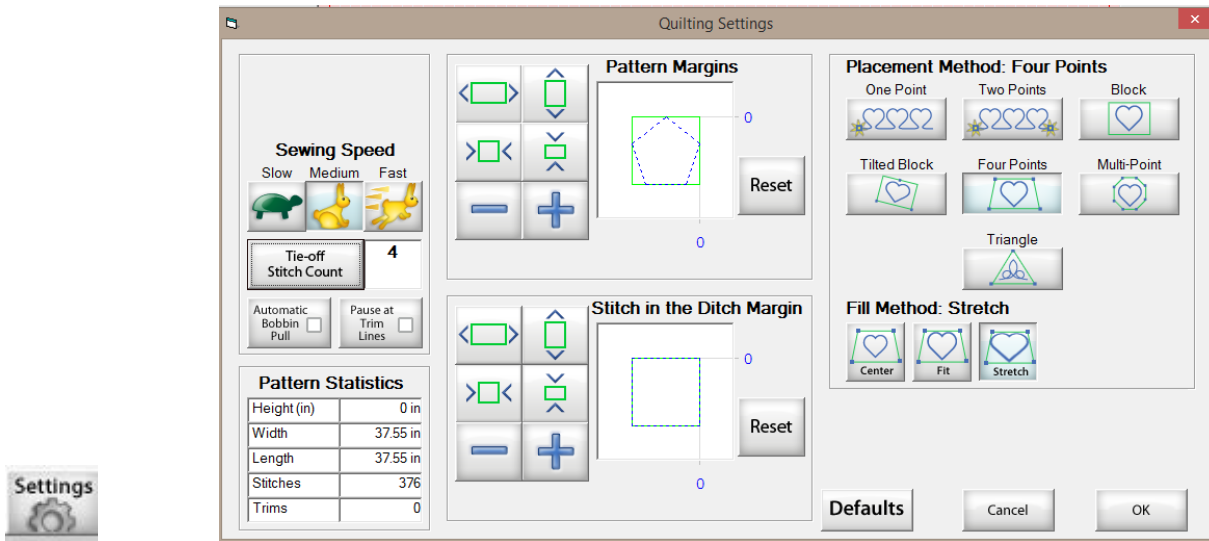
BEFORE YOU GET STARTED **THREE: Practice with Demo.** Before designing and quilting a pantograph, I would strongly recommend that you **watch** all of the *APQS Quilt Path* [videos](#), then **download and use** *Quilt Path's demo version* on your PC or the demo mode on your PC or Tablet to learn the many features and nuances of designing a pantograph.

Many of the options vary according to the actual design you are using. So one set of instructions can hardly apply to all designs. The following instructions will hopefully get you started in the right direction.

WORD OF CAUTION: While you are experimenting with the Size, Fit, and Move features in the *Quilt Path PantoStacker*, pay close attention to **ROW SELECTION**. Your chosen actions (size, move, fit) will be applied only to the rows you've selected. If only one row is selected, for instance, that row will be different from all the others. So make sure you understand the selection of rows: All/None and Alternating. And be sure the correct ones are selected before applying an action.

And don't forget about the UNDO button and the RESET. You may need them.

BEFORE YOU GET STARTED **FOUR**: Choose your Settings. To get to this screen, you need to send something to quilt. So **tap Select and Sew a pattern**, then choose a pattern, and you will see a settings button at the top of screen that will lead you to the settings.



I have my –

- Sewing Speed set at **Medium**
- Tie-off Stitch Count (tacking stitches) set at **4**.
- Automatic Bobbin Pull **deactivated**; it slows me down.
- Pause at Trim Lines **deactivated** for pantographs, since the jump stitches, if any, will be off the quilt.

However, if you are doing custom work and sewing blocks or other designs, it would be beneficial to activate the Pause at Trim Lines feature so you can trim the thread after each block is stitched and restart sewing at the next start point. This eliminates long jump stitches.

Please keep in mind that there are many different ways to do most of these functions. I have outlined the way that I've been doing them. If you find a better way, I'd love to hear about it. Whatever works is good.

Georgene Huggett

www.AllNaturalChoices.com

[Quilt Pictures](#)

[Studio Pictures](#)

APQS Representative, Poquoson, VA