

Add On to Existing Signs Easily

Top Mount Linear Warning Bar System for increased safety .
Draws drivers eye right to sign.

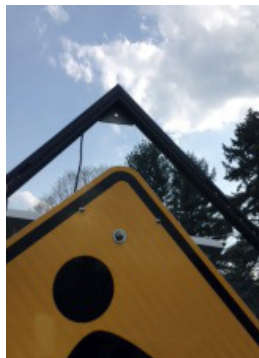
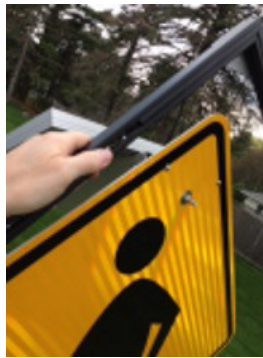
This is an easy to install upgrade for existing or new signs. Part Number TMFB.

“OVER THE TOP” mounting – Remove upper sign mounting bolt. Put sign in slot on Linear Warning Bar and slip rear strap between sign mount and hole in sign. Put bolt back thru sign, strap, and pole mount to fix bar in place.

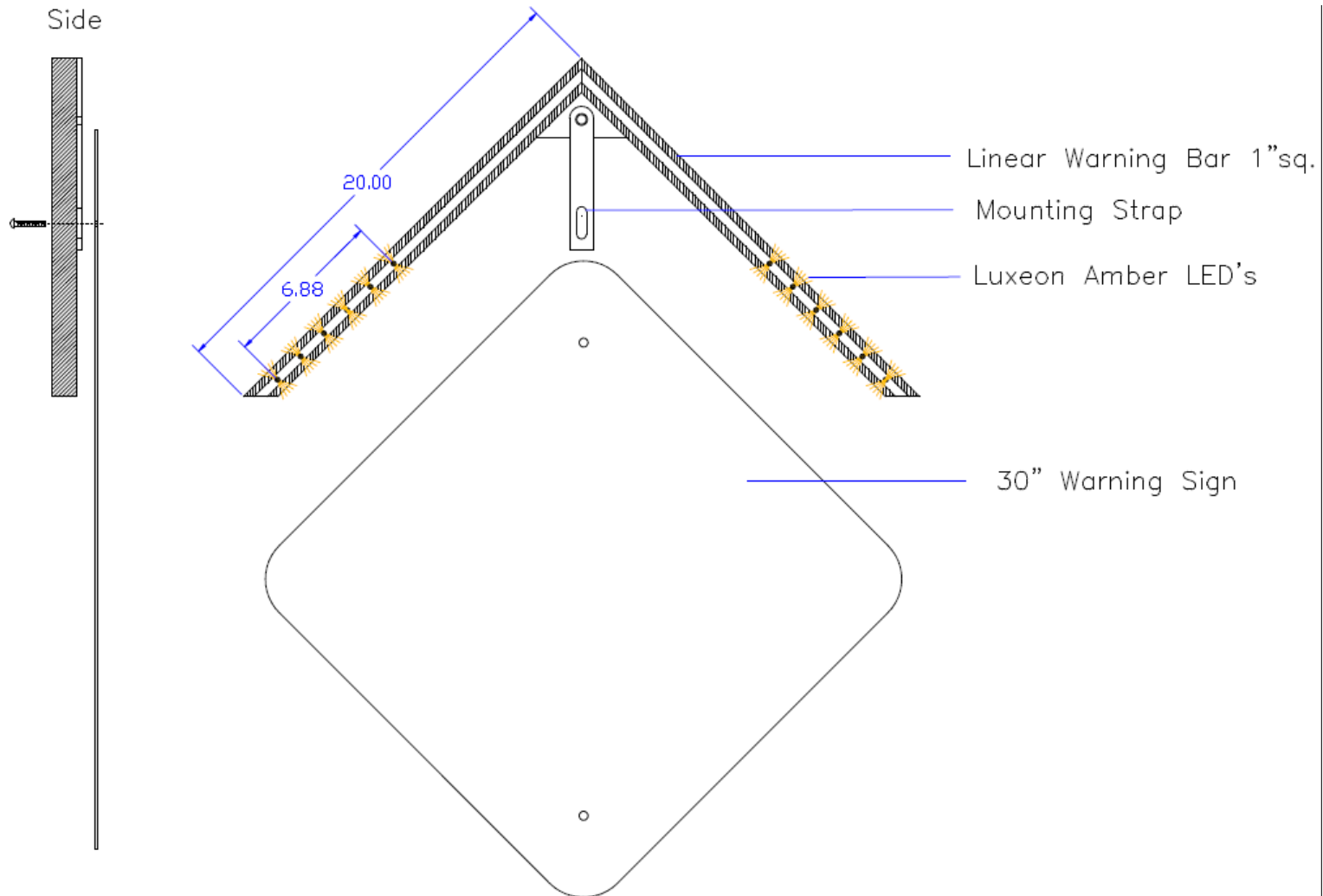
Provides a Hi Visibility enhancement for warning signs such as Pedestrian Crossing, Railroad, Do Not Enter, Wrong Way or Stop signs. Designed as a rigid extruded aluminum bar with Luxeon Hi Power LED's embedded in the bar. Measures only 1" Square by 20" in length (for 30" sign) and can be easily retrofitted to existing Channel, Square or Round poles. Basic system includes Light Bar, Solar Panel, Enclosure with Battery and Time Clock (for time based operation) or specify Pushbutton operation.



- Amber LED's for Warning Signs.
- Wide LED viewing angle.
- Can be configured for Solar or AC Power operation.
- Trigger with either push-button, motion sensors or time clock activation.
- Weather tight to IP68 standards.
- 2 Year warranty.
- SYNC OPTION Allows two signs to turn on together upon one being activated.
- Includes Solar Panel, Linear LED Bar, Enclosure with Battery and Electronics.



© M-SYSTEMS INC. 2021



© M-SYSTEMS INC. 2018-2022

Solar Package

Enclosure

- 16 gauge carbon steel
- ANSI-61 gray powder coated finish over phosphatized surface
- Continuous latched hinge (padlockable)
- NEMA 3R with external mounting plate top and bottom.
- Backpanel Powder coated White
- Stainless Straps for Pole Mount

Electronics

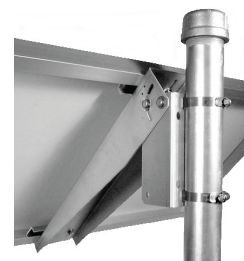
- 18 Ah Rechargeable AGM Battery
- Solar Charge Controller 10A.
- Msi Flash Controller
- Terminal Blocks
- Circuit Breaker Disconnect
- Time Clock or Pedestrian Pushbutton Input control

Solar Panel

- 20 Watt Panel
- with Mount and Hardware



Slim Version
W/ 3ft wire



© M-SYSTEMS INC. 2018-2022