

We manufacture ONLY Grade AA/A or Tier I tires using 100% new virgin rubber, carbon black and steel (NO recycled material); BEST warranty in the industry. FACTORY DIRECT pricing per container.



**Toll Free Call (USA & CAN): 1-855-35-TRUCK (8-7825)**  
We Deliver Throughout the U.S.A. /Alaska and Canada, and will ship worldwide



## ATP517 TUBELESS

**Wheel position:** For trailers.

**Application:** For highway and improved road surface.

**Characters:** Low rolling resistance enables the tire to have good oil-saving, low heat making and high-speed performance.

**Website:**

[www.atp4you.net](http://www.atp4you.net)

**Email:**

[sales@atp4you.net](mailto:sales@atp4you.net)

SIZE	RIM	PLY RATING	SPEED SYMBOL	NEW TIRE DESIGN DIMENSION/mm			LOAD INDEX		INFLATION PRESSURE SINGLE/DUAL		LOAD CAPACITY SINGLE/DUAL	
				SECTION WIDTH	OVERALL DIAMETER		SINGLE	DUAL	KPA	PSI	KG	LBS
					HIGHWAY	TRACTION						
11R/24.5	8.25	14	M	279	1104		146	143	720 / 720	105 / 105	3000 / 2725	6610 / 6005
		16	M				149	146	830 / 830	120 / 120	3250 / 3000	7160 / 6610
285/75R/24.5	8.25	14	M	283	1050		144	141	760 / 760	110 / 110	2800 / 2575	6175 / 5675
		16	M				147	144	830 / 830	120 / 120	3075 / 2800	6780 / 6175
295/75R/24.5	9.0	14	M	298	1014		144	141	760 / 760	110 / 110	2800 / 2575	6175 / 5675
		16	M				146	143	830 / 830	120 / 120	3000 / 2725	6610 / 6005

We manufacture ONLY Grade AA/A or Tier I tires using 100% new virgin rubber, carbon black and steel (NO recycled material); BEST warranty in the industry. FACTORY DIRECT pricing per container.



**Toll Free Call (USA & CAN): 1-855-35-TRUCK (8-7825)**  
We Deliver Throughout the U.S.A. /Alaska and Canada, and will ship worldwide



## ATP517 TUBELESS

**Wheel position:** For trailers.

**Application:** For highway and improved road surface.

**Characters:** Low rolling resistance enables the tire to have good oil-saving, low heat making and high-speed performance.

**Website:**

[www.atp4you.net](http://www.atp4you.net)

**Email:**

[sales@atp4you.net](mailto:sales@atp4you.net)

SIZE	RIM	PLY RATING	SPEED SYMBOL	NEW TIRE DESIGN DIMENSION/mm			LOAD INDEX		INFLATION PRESSURE SINGLE/DUAL		LOAD CAPACITY SINGLE/DUAL	
				SECTION WIDTH	OVERALL DIAMETER		SINGLE	DUAL	KPA	PSI	KG	LBS
					HIGHWAY	TRACTION						
11R/24.5	8.25	14	M	279	1104		146	143	720 / 720	105 / 105	3000 / 2725	6610 / 6005
		16	M				149	146	830 / 830	120 / 120	3250 / 3000	7160 / 6610
285/75R/24.5	8.25	14	M	283	1050		144	141	760 / 760	110 / 110	2800 / 2575	6175 / 5675
		16	M				147	144	830 / 830	120 / 120	3075 / 2800	6780 / 6175
295/75R/24.5	9.0	14	M	298	1014		144	141	760 / 760	110 / 110	2800 / 2575	6175 / 5675
		16	M				146	143	830 / 830	120 / 120	3000 / 2725	6610 / 6005

We manufacture ONLY Grade AA/A or Tier I tires using 100% new virgin rubber, carbon black and steel (NO recycled material); BEST warranty in the industry. FACTORY DIRECT pricing per container.



**Toll Free Call (USA & CAN): 1-855-35-TRUCK (8-7825)**  
We Deliver Throughout the U.S.A. /Alaska and Canada, and will ship worldwide



## ATP519 TUBELESS

**Wheel position:** For drive wheels.  
**Application:** For improved or mixed road surface in good and bad conditions.  
**Characters:** Tough blocks provide strong traction and off-road performance. Special tread design effectively improves self-cleaning performance. Deep grooves enable the tyre to have a high mileage.

**Website:**  
[www.atp4you.net](http://www.atp4you.net)  
**Email:**  
[sales@atp4you.net](mailto:sales@atp4you.net)



SIZE	RIM	PLY RATING	SPEED SYMBOL	NEW TIRE DESIGN DIMENSION/mm			LOAD INDEX		INFLATION PRESSURE SINGLE/DUAL		LOAD CAPACITY SINGLE/DUAL	
				SECTION WIDTH	OVERALL DIAMETER		SINGLE	DUAL	KPA	PSI	KG	LBS
					HIGHWAY	TRACTION						
11R/22.5	8.25	14	K	279		1065	144	142	720 / 720	105 / 105	2800 / 2650	6170 / 5840
		16	K			1065	146	143	830 / 830	120 / 120	3000 / 2725	6610 / 6005
11R/24.5	8.25	14	K	279		1116	146	143	720 / 720	105 / 105	3000 / 2725	6610 / 6005
		16	K			1116	149	146	830 / 830	120 / 120	3250 / 3000	7160 / 6610
12R/22.5	9.0	16	L	300	1085		150	147	830 / 830	120 / 120	3350 / 3075	7390 / 6780
		18	L				152	149	930 / 930	135 / 135	3550 / 3250	7820 / 7160
285/75R/24.5	8.25	14	K	283		1056	144	141	760 / 760	110 / 110	2800 / 2575	6175 / 5675
		16	K			1056	147	144	830 / 830	120 / 120	3075 / 2800	6780 / 6175
295/75R/22.5	9.0	14	K	298		1020	144	141	760 / 760	110 / 110	2800 / 2575	6175 / 5675
		16	K			1020	146	143	830 / 830	120 / 120	3000 / 2725	6610 / 6005

We manufacture ONLY Grade AA/A or Tier I tires using 100% new virgin rubber, carbon black and steel (NO recycled material); BEST warranty in the industry. FACTORY DIRECT pricing per container.



**Toll Free Call (USA & CAN): 1-855-35-TRUCK (8-7825)**  
We Deliver Throughout the U.S.A. /Alaska and Canada, and will ship worldwide



## ATP766 TUBELESS

**Wheel position:** For steer axle or trailers.

**Application:** For highway and improved road surface.

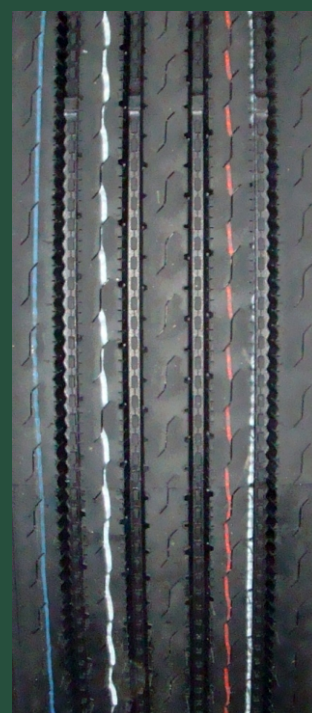
**Characters:** Having good anti-sideslip performance and low rolling resistance, also such pattern has low heat-making and superior high-speed performance.

**Website:**

[www.atp4you.net](http://www.atp4you.net)

**Email:**

[sales@atp4you.net](mailto:sales@atp4you.net)



SIZE	RIM	PLY RATING	SPEED SYMBOL	NEW TIRE DESIGN DIMENSION/mm			LOAD INDEX		INFLATION PRESSURE SINGLE/DUAL		LOAD CAPACITY SINGLE/DUAL	
				SECTION WIDTH	OVERALL DIAMETER		SINGLE	DUAL	KPA	PSI	KG	LBS
					HIGHWAY	TRACTION						
11R/22.5	8.25	14	M	279	1054		144	142	720 / 720	105 / 105	2800 / 2650	6170 / 5840
		16	M				146	143	830 / 830	120 / 120	3000 / 2725	6610 / 6005
11R/24.5	8.25	14	M	279	1104		146	143	720 / 720	105 / 105	3000 / 2725	6610 / 6005
		16	M				149	146	830 / 830	120 / 120	3250 / 3000	7160 / 6610
12R/22.5	9.0	16	M	300	1085		150	147	830 / 830	120 / 120	3350 / 3075	7390 / 6780
		18	M				152	149	930 / 930	135 / 135	3550 / 3250	7820 / 7160
295/75R/22.5	9.0	14	M	298	1014		144	141	760 / 760	110 / 110	2800 / 2575	6175 / 5675
		16	M				146	143	830 / 830	120 / 120	3000 / 2725	6610 / 6005
295/80R/22.5	9.0	16	M	298	1044		150	147	830 / 830	120 / 120	3350 / 3075	7390 / 6780
		18	M				152	149	900 / 900	130 / 130	3550 / 3250	7830 / 7160

We manufacture ONLY Grade AA/A or Tier I tires using 100% new virgin rubber, carbon black and steel (NO recycled material); BEST warranty in the industry. FACTORY DIRECT pricing per container.



**Toll Free Call (USA & CAN): 1-855-35-TRUCK (8-7825)**

We Deliver Throughout the U.S.A. /Alaska and Canada, and will ship worldwide



## ATP909 TUBELESS

**Wheel position:** For drive wheels.

**Application:** For improved or mixed road surface in good and bad conditions.

**Characters:** Tough blocks provide strong traction, and off-road performance. Special tread design effectively improves self-cleaning performance. Deep grooves enable the tire to have high milage.

### Website:

[www.atp4you.net](http://www.atp4you.net)

### Email:

[sales@atp4you.net](mailto:sales@atp4you.net)

SIZE	RIM	PLY RATING	SPEED SYMBOL	NEW TIRE DESIGN DIMENSION/mm			LOAD INDEX		INFLATION PRESSURE SINGLE/DUAL		LOAD CAPACITY SINGLE/DUAL	
				SECTION WIDTH	OVERALL DIAMETER		SINGLE	DUAL	KPA	PSI	KG	LBS
					HIGHWAY	TRACTION						
11R/22.5	8.25	14	L	279		1065	144	142	720 / 720	105 / 105	2800 / 2650	6175 / 5840
		16	L			1065	146	143	830 / 830	120 / 120	3000 / 2725	6610 / 6005
11R/24.5	8.75	14	L	279		1116	146	143	720 / 720	105 / 105	3000 / 2725	6610 / 6005
		16	L			1116	149	146	830 / 830	120 / 120	3250 / 3000	7160 / 6610



# AMERICAN TRANSPORTATION



We deliver guaranteed transportation products and components worldwide. We carry a wide range of products, including: factory direct heavy truck tires and OTR Tires, OEM truck beds and truck bed components, aluminum factory direct flatbeds, trailers (open and enclosed), truck bodies and heavy duty aluminum trailers, and we can deliver them direct to you or your company, or you can pick them up at any one of our yards throughout the U.S.A. and Canada. We handle all sale and delivery details for you.

## Warranty:

### Mileage / Time Warranty:

Full replacement warrant on the tire/tread for up to 50,000 miles (80,467 km) or 18 months whichever comes first, for any defect resulting from workmanship and material.

### Over The Road Tire Replacement:

Full workmanship and material defect warranty for the life of the original tread. Pro-rated on remaining tread depth, down to 2/32" (2 mm) tread remaining or casing value, whichever is greater.

### ON and Off Road Policy:

Full workmanship and material defect warranty for the life of the original tread and an additional cut/chip/stone drill warranty. Pro-rated on remaining tread depth, down to 2/32" (2 mm) tread remaining or casing value, whichever is greater.

### Retread Policy:

All steel belted radial truck tire casings have a warranty against workmanship and material defects in the casing for two (2) retreads.



- WE WHOLESALE TO RETAIL STORES -

## American Transportation Products

Website:

[www.atp4you.net](http://www.atp4you.net)

Email:

[sales@atp4you.net](mailto:sales@atp4you.net)

**Toll Free Call (USA & CAN): 1-855-35-TRUCK (8-7825)**

We Deliver Throughout the U.S.A. /Alaska and Canada, and will ship worldwide