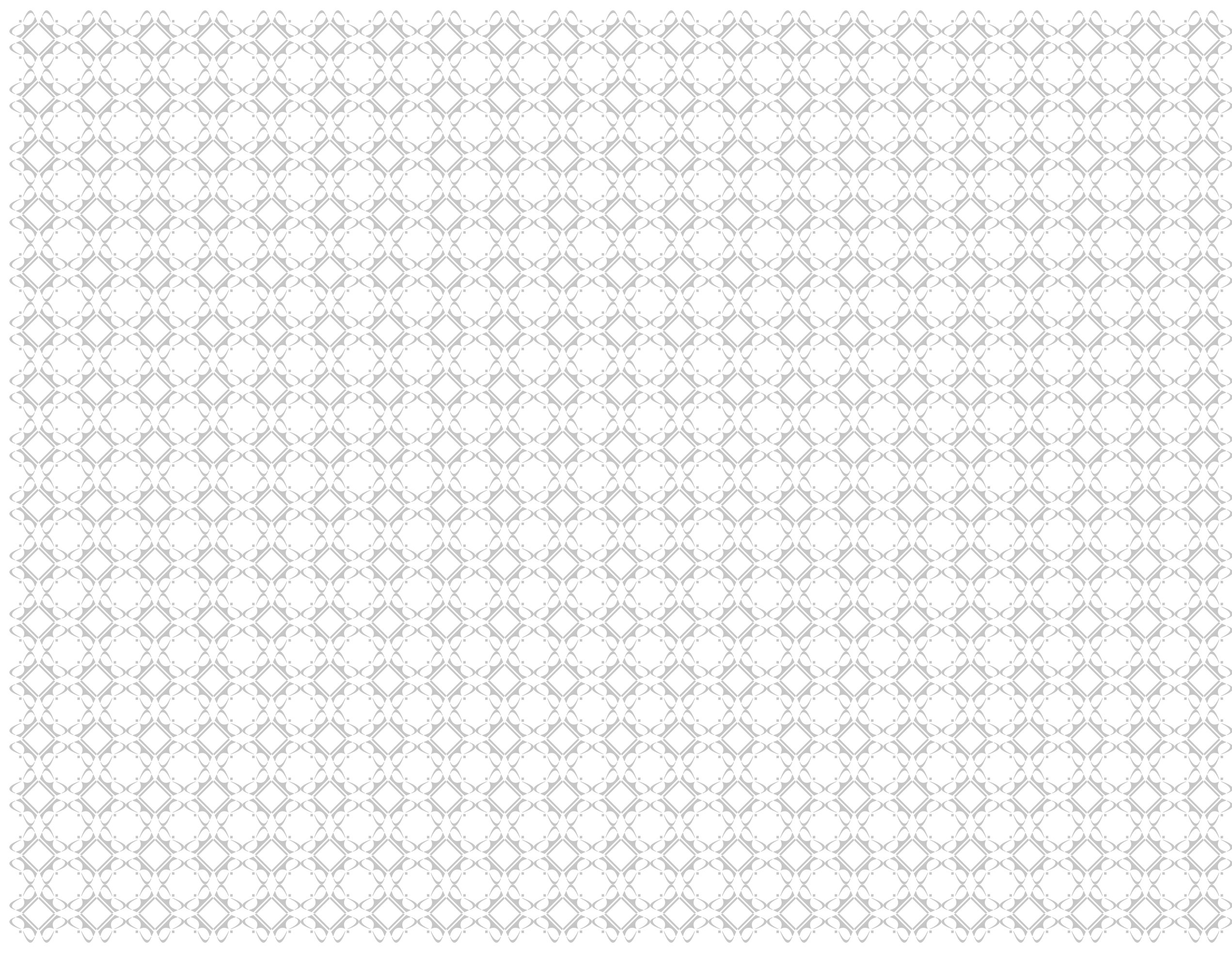





PRINCESS



a life
in
style



CONTENTS

	Page
Welcome to our world	4
Quality isn't a checklist	10
A matter of choice	14
A matter of taste	17
Distributor network	194

M CLASS

Superyacht introduction	18
40M	21
35M	22
30M	23

FLYBRIDGE

Flybridge introduction	24
88 Motor Yacht	32
82 Motor Yacht	42
72 Motor Yacht	52
68	60
64	66
60	72
56	80
52	88
43	96

V CLASS

Sports yacht introduction	104
V85-S	112
V78	120
V72	128
V62-S	136
V57	144
V52	152
V48	160
V39	168

S CLASS

Sportbridge introduction	176
S72	184
S Class future	192

W

elcome to our world. A world of sophistication and elegance, a world where state-of-the-art design meets unparalleled luxury – the world of Princess Yachts.

Based in Plymouth, in the very cradle of Britain’s maritime heritage, Princess Yachts is regarded as the finest exponent of contemporary yacht design. Instantly recognisable, yet tempered with a bold creativity, the exterior lines of our yachts have been carefully honed over the company’s 50-year history.

Powerful, yet graceful, our hulls are designed to offer a peerless blend of speed, agility and efficiency, all of which combine to ensure an effortless passage wherever you choose to venture.

Step inside a Princess yacht and you enter into a world that reflects our unique insight into style, culture and design. Where the highest levels of quality and unparalleled luxury always come as standard, and the strength and heritage of our LVMH ownership ensures that our style never stands still.

Backed by a truly global network of experienced distributors, many of whom have been part of the Princess family for decades, you can be sure of the very best levels of customer service to complement what we believe to be the finest range of luxury motor yachts in the world.





A Princess gives you confidence at the wheel, certainty in the handling, exhilaration at speed. You know you own a yacht that has been designed and built by some of the finest and most experienced craftsmen in the world.



M CLASS

superyachts from 30 to 40 metres

The epitome of space, style and personalisation – an M Class yacht is the pinnacle of British yacht design. Whether you have a specific designer in mind or select one of our in-house specialists we will work with you to create a bespoke interior that complements the spaciousness and elegance that defines M Class.

S CLASS

sportbridge yachts from 60 to 80 feet

S Class is the ultimate combination of dynamic performance and outdoor lifestyle - a new way to enjoy the best in marine design and engineering. A low profile, sharp lines and dark wraparound windows give the S Class her signature look, while a deep-V hull and low centre of gravity deliver effortless poise and an exhilarating ride.

FLYBRIDGE

flybridge yachts from 43 to 88 feet

There is nothing like the experience of power and capability that you will find at the helm of a Princess Flybridge yacht as you cut through the water in style. Joining our renowned Flybridge range this season, the Princess 68 is set to become the latest in a long line of world-leading Princess yachts.

V CLASS

sports yachts from 39 to 85 feet

An advanced deep-V hull, powerful engines and exceptional agility – a V Class Sports Yacht is muscle and beauty personified. With spacious and contemporary Princess-styled interiors and a large retractable sunroof that brings the outside in, V Class embodies the very spirit of luxury yachting.



Quality isn't
a checklist,
it's a tradition.



Ever since the launch of our first vessel in 1965, Princess has consistently evolved to what is now a leading position within the yacht industry. Fusing cutting-edge technology and elegant design, we set the benchmark in quality.

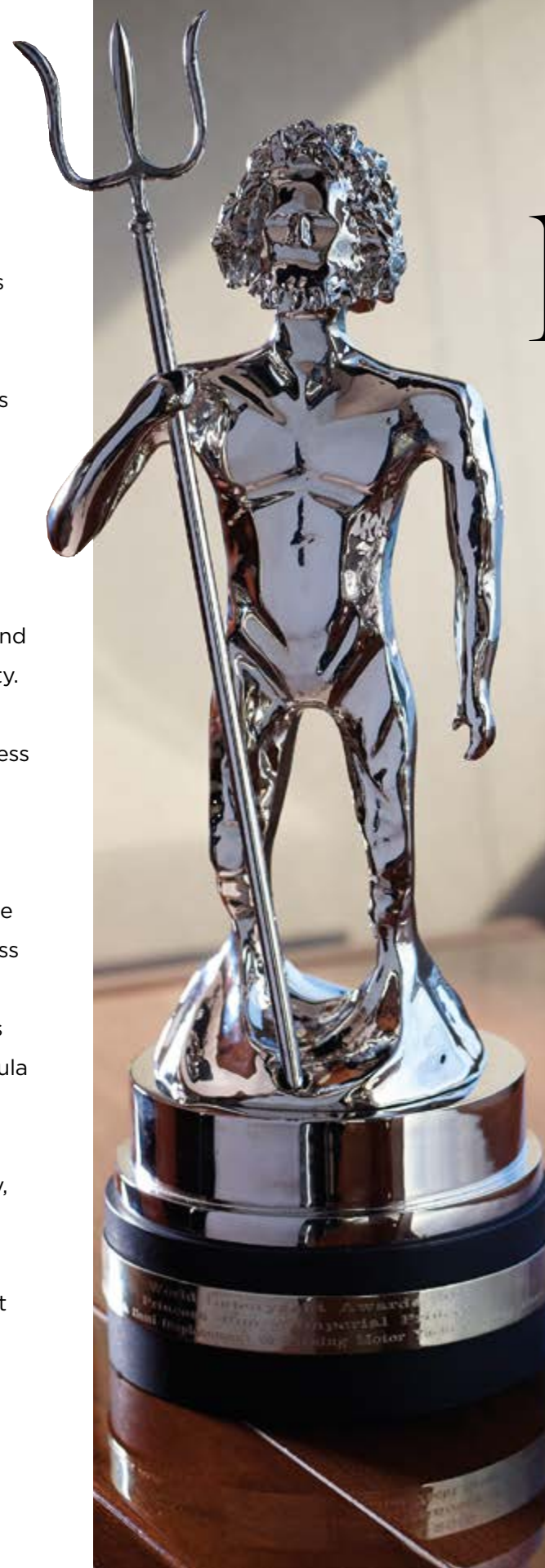


In owning a Princess you can be absolutely confident that the performance and style of your boat is equalled only by its outstanding engineering and build quality.

At Princess, we have over 2,000 highly skilled employees and shipyards that span over 1,100,000 square feet. Yet it's not uncommon to see our architects and engineers walking through the build sheds to speak with expert craftsmen and technicians to monitor the progress of a new project.

Working in teams in the most efficient and advanced facilities, everyone at Princess prides themselves on attention to detail and a meticulous commitment to quality.

We fundamentally believe in progress through evolution and this proven process keeps us at the forefront of design and engineering. For example, no one has more expertise in resin infusion technology. Princess has been an active partner in technology working groups, across the aeronautical, energy and Formula 1 industries. Together we have developed the latest generation of composite and infusion technology, resulting in the development of yachts that are stronger, lighter, more efficient and have the highest possible interior volume.



Your prized possession,
our prized design.

Our priority is to be considered the best by our owners, but recognition by independent experts through a number of prestigious awards has given Princess and our craftsmen a tremendous sense of pride.

RECENT AWARDS	CATEGORY	YACHT	YEAR
Asia Boating Awards	Best Production Boat under 15m	V39	2014
Motor Boat Awards	Flybridge up to 55ft	P43	2014
Asia Boating Awards	Best Production Motor Yacht	40M	2013
Motor Boat of the Year Awards	Sports Cruisers up to 45ft	V39	2013
Japan Boat of the Year Awards	Best Imported Large Yacht	P56	2013
The World Superyacht Awards	Superyacht of the Year up to 40m	Imperial Princess	2013
Hurun Report Best of the Best	Best Production Motor Yacht 30m	32M	2013
Motor Boat of the Year Awards	Sports Cruiser	V52	2012
Japan Boat of the Year Awards	Boat of the Year Japan	V52	2012
Asia Boating Awards	Best Production Motor Yacht	32M	2011
Motor Boat of the Year Awards	Sports Cruiser over 45ft	V62	2010

A MATTER OF CHOICE

Every one of our yachts is rich in hand-crafted, hand-finished detailing.

With customers from many different countries and cultures, great consideration is always given to layout options, accessories and the finest materials to best suit different climates and tastes, allowing each owner to personalise their own unique Princess.





A MATTER OF TASTE

We know that small details make a big difference.
American walnut or Serotina cherry? Embossed or
hand-stitched leather? Polished granite or marble?
Fabrics from an LVMH design house?
Our unique relationships open up a
world of opportunity.

Taste is personal – your yacht
should be too.

M Class Superyachts





M Class is an experience – it's the best of Princess. It's our most advanced technology. It's a design that is totally unique to you.

Each M Class owner enjoys the full support of a dedicated design team, so that every detail can be refined to reflect their taste and lifestyle. With extensive layout options and an exclusive selection of the finest furnishings, textiles and fittings to choose from, there are infinite possibilities.

Using our unique resin infusion technology, the same process used in the aviation industry, we are able to deliver class-leading volume and structural

integrity. Our build technology and design optimise efficiency, reducing fuel burn, while delivering superior noise and vibration deadening for class-leading sound levels.

We believe that each and every M Class yacht should be the epitome of comfort, style, performance and personalisation. That is why you are the key to the design process - let us unlock the possibilities.



40M

The award-winning flagship of the Princess fleet, this 131ft tri-deck superyacht makes a bold statement wherever she sails. Defining M Class style, the 40M's smooth lines conceal an incredible 395 Gross Registered Tonnes (GRT), delivering unbeatable internal volume. The standard layout includes an opulent sky lounge, full-beam main deck master suite with a private owner's office and a further four or five en suite guest cabins. At the stern lies the beach club, with a walk-in garage able to accommodate a 6.5m (21ft) tender, two jetskis and a dive room.



35M

Unmistakably powerful lines make the 35M a modern classic. A raised pilothouse design delivers a level of deck space and luxury unsurpassed by any yacht in this class. The flybridge is vast, the aft cockpit broad and beautifully appointed for dining or simply spending time with friends. At the bow lies a stunning foredeck lounge.

A full-beam master suite takes pride of place on the main deck, with a further three or four guest cabins below. With the crew quarters forward and a 5.5m tender and jetski garage aft, the 35M sets a new benchmark in design.



30M

A brand-new addition to the M Class range, the 30M embodies the combination of cutting-edge pilothouse design with effortless long-range passage making. Her variable geometry hull design benefits from the same advances as the award-winning 40M, stretching the boundaries in hydro-dynamic design, space and comfort.



Flybridge Yachts



Our flying visit to Vizcaya

We left for Villa Vizcaya early that morning aboard our Princess Flybridge. Smiling faces, beautiful surroundings – it was a day we would always cherish.





"We stopped off for lunch on the flybridge.
Sunbathing, fishing, kayaking, swimming –
the boat is like our own private playground."



“For us, a Princess Flybridge yacht has that perfect balance between interior and exterior space. We could lounge around all day on the flybridge or sunbathe in peace and quiet on the huge foredeck sunpads. The bathing platform actually descends into the water so it’s much easier getting on and off for a swim.

”As the sun set, we had drinks and snacks up top and then moved down into the deck saloon for dinner. The galley is surprisingly large and the grilled fish was all the better for our son having caught it earlier (as he never ceased to remind us).”





88

MOTOR YACHT

- Long-range 1500nm cruising capability
- Hybrid hull design for efficient running up to 30 knots
- Four en suite cabins plus accommodation for four crew
- Princess Design Studio to help you personalise your interior styling
- Optional hydraulic side balcony opens off the deck saloon
- Extended flybridge with optional spa bath and tender crane
- Separate crew access to all technical areas and galley

The 88 Motor Yacht is built on the latest Princess hybrid hull capable of long-distance passage-making or fast port-to-port cruising. In both cases, her comfort levels are sublime.

Across the vast one-level deck saloon and dining area light and seascape pour in. At the touch of a button, a balcony unfolds over the sea, opening up the saloon to the world beyond and creating the perfect vantage point for drinks before dinner.







Exquisite detailing and the finest fabrics and materials combine in the 88 Motor Yacht, in a sanctuary of relaxation and luxury.

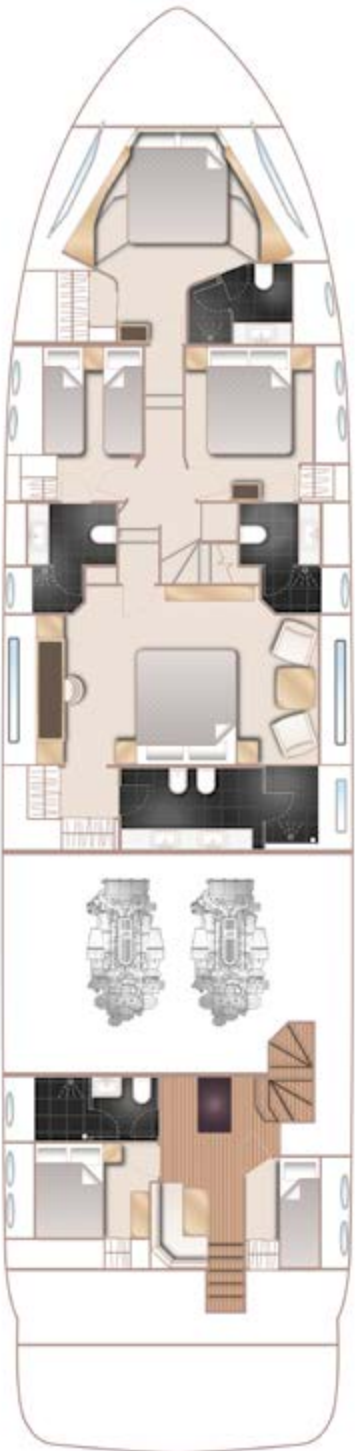




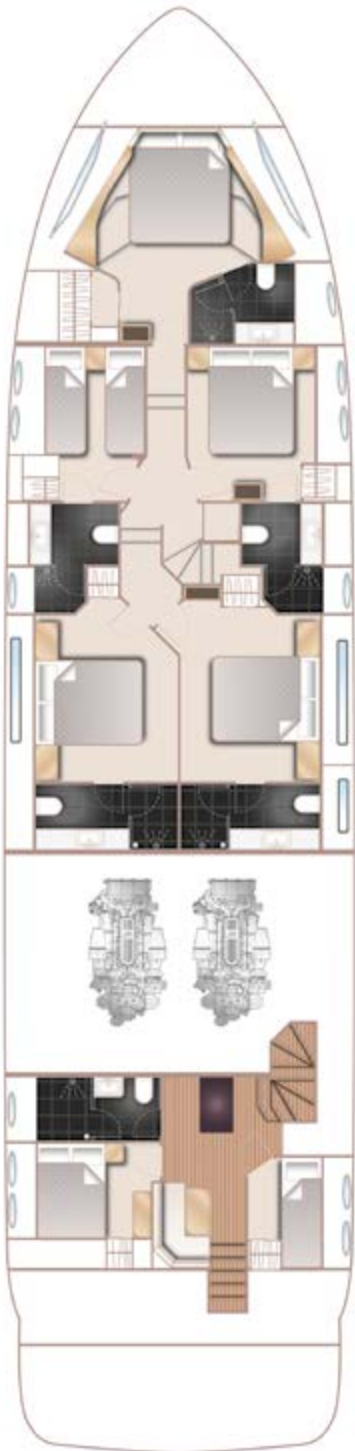
FLYBRIDGE



MAIN DECK



LOWER DECK



OPTIONAL LOWER DECK

88

MOTOR YACHT

DECK FITTINGS

- Teak-laid transom platform, cockpit deck, flybridge, flybridge stairway, side decks and foredeck walkthrough
- Twin self-stowing 80kg/176lbs and 50kg/110lbs Delta anchors with 100m of chain (each)
- Twin electric anchor winches with foredeck and three station controls
- Twin electric-powered sternline mooring winches
- Foredeck seating and sunbathing area
- Storage lockers for rope, fenders and foredeck sunbed cushions
- Telephone connection point
- Twin 240v shore power inlets with 15m self stowing cables
- Stern docking lights
- Transom doors giving direct access to lazarette and crew area

COCKPIT

- U-shaped seating with teak folding table
- Twin transom gates leading to bathing platform with electro-hydraulic raise/lower mechanism, foldaway swimming ladder, hot and cold shower
- Door leading to crew quarters and engine room from side deck
- Life raft storage
- Remote control 4.4m telescopic passerelle with folding handrail
- Stern docking control position

FLYBRIDGE

- Helm position with powered raise/lower console, repeat navigation equipment including radar/chartplotter and engine instrumentation
- U-shaped seating area and teak table with removable centre section
- Twin forward L-shaped seating
- Sunpad with storage below (option for built-in spa bath)
- Radio/MP3 with waterproof speakers
- Wetbar including sink with electric barbecue and top loading coolbox
- Optional crane

WHEELHOUSE

- Helm seat with electric adjustment
- U-shaped seating with table to port
- Helmsman's door to side deck and electric opening window to port
- Instrument console with engine instruments and fuel gauges
- Full engine instrumentation including fuel gauges, exhaust temperature, fuel contamination alarms, rudder position indicator
- Navigation system including colour radar, GPS and chartplotter (3 displays), VHF/RT, speed and distance log, echo sounder with alarm, autopilot and high speed magnetic compass

PRINCIPAL DIMENSIONS

Length overall (incl. pulpit)	88ft 0in (26.82m)
Length overall (excl. pulpit)	87ft 2in (26.57m)
Beam	20ft 9in (6.3m)
Draft	5ft 10in (1.78m)
Displacement approx.	67,000 kg (147,710 lbs)*
Fuel capacity	2,420 gal/2,907 US gal/11,000l
Water capacity (incl. calorifier)	330 gal/396 US gal/1,500l
Hot water calorifier	45 gal/54 US gal/205l
Holding tank capacity	110 gal/132 US gal/500l

- Controls for bow thruster, windscreen wipers, bilge pump and trim tabs (with indicator)
- CCTV linked into display at lower helm
- Intercom to flybridge and all cabins
- Chart table with light and chart stowage
- 24v and 240v control panel
- Toughened glass screen (clear for night vision)

DECK SALOON

- L-shaped seating area with two armchairs, two-seater sofa and coffee table
- Entertainment centre incorporating 50" HD LED TV on electric raise/lower mechanism and DVD, radio/MP3 system with surround sound system
- Sideboard unit with bottle and glass storage, refrigerator and icemaker
- Dining area (8 people) with sideboard units to port
- Option of sliding doors combined with balcony on starboard side
- Day head

GALLEY

- 4-zone ceramic hob
- Combination microwave/conventional oven with grill
- Twin stainless-steel sinks with mixer tap
- Large refrigerator with deep freeze drawers
- Dishwasher
- Access door to side deck

ACCOMMODATION

- All cabins and bathrooms feature opening portholes and air conditioning outlets
- All cabins feature 220/240v power points
- All mattresses pocket sprung
- All bathrooms feature full shower stalls, electric quietflush toilets, extractor fan and 240v shaver points

OWNER'S STATEROOM

- Large double bed with drawers below
- Dressing area with wardrobes with hanging and drawer storage
- Dressing table with chair
- Occasional table with seats fore and aft
- Built-in safe
- Refrigerator
- 46" LED TV and DVD, radio/MP3 system with surround sound
- En suite bathroom with heated towel rail and bidet
- Optional five cabin layout replaces the owner's stateroom with two en suite staterooms

FORWARD STATEROOM

- Large double bed with drawers below
- Walk-in wardrobe with shelves
- Dressing table with stool

- 32" LED TV, stereo radio/MP3
- En suite bathroom with heated towel rail

PORT GUEST CABIN

- Two single beds with drawers below (with the option of powered conversion to double)
- Wardrobe with shelves
- En suite bathroom with heated towel rail

STARBOARD GUEST CABIN

- Large double bed with drawers below
- Wardrobe with shelves
- Dressing table with stool
- 46" LED TV, stereo radio/MP3
- En suite bathroom with heated towel rail

LOWER ACCOMMODATION LOBBY

- The lobby area has a full height storage cupboard with the option of fitting an additional washer/dryer
- Under-floor storage

CREW QUARTERS

- Captain's cabin with double berth, desk, wardrobe and storage lockers
- Crew cabin with two single berths, wardrobe and storage lockers
- Bathroom with separate stall shower, electric quietflush toilet and washbasin
- Crew mess with microwave oven, sink, refrigerator and washing machine with separate dryer

INTERIOR FINISH

- Furniture in choice of Serotina Cherry or Light Oak with satin or high gloss finish. American Walnut or Rovere Oak available as an option
- Bathroom worktops and floors in choice of marble or granite
- Galley worktops in choice of granite or marble
- Choice of high quality carpet and upholstery fabric from extensive range
- Curtains, blinds or sunscreens to all windows and portholes
- Timber-laid galley and wheelhouse floors

POWER AND DRIVE SYSTEMS

- 5-bladed propellers in nickel aluminium bronze
- Bow thruster (240kgf/529lbf)
- Power-assisted electro-hydraulic steering system with hydraulic back-up
- Electronic engine and gear shift control systems
- Dripless shaft seals

ELECTRICAL SYSTEM

- **24 Volt:**
- 4 x heavy duty batteries for engine starting

ENGINE OPTIONS - DIESEL

Twin MTU 12V 2000 M93 (2 x 1,822mhp)	Speed range: 27-28 knots†
Twin Caterpillar C32 A (2 x 1,825mhp)	Speed range: 27-28 knots†
Twin Caterpillar C32 A (2 x 1,925mhp)	Speed range: 29-30 knots†

- 6 x heavy duty auxiliary batteries
- Additional battery bank for generators
- 2 x 60 amp battery charger charges both banks of batteries via an automatic switch charging system
- Remote battery master switches with control switch at main panel
- LED lighting throughout
- **220/240 Volt:**
- 27kW diesel generator in own sound shield with water cooled specially silenced exhaust
- 2 x 63 amp shore support inlet
- Earth leakage safety trip, polarity check system, circuit breakers on all circuits
- Power points in all areas

FUEL SYSTEM

- Twin fuel tanks (in NS8 marine grade alloy) with interconnection system giving 2,420 gal/2,907 US gal/11,000l
- High capacity duplex fuel filters/water traps with audible and visual fuel contamination warning system
- Remote fuel cocks in cockpit locker

WATER SYSTEM

- 285 gal/342 US gal/1,295l plus 45 gal/54 US gal/205l hot water calorifier, heated by engines and 240v immersion heater
- Electric quietflush WC system with 110 gal/132 US gal/500l holding tank

AIR CONDITIONING

- 213,000Btu chilled water system with outlets in all accommodation areas and incorporating reverse cycle heating with linked windscreen de-mist system. Suitable for tropical conditions (40°C)

FIRE EXTINGUISHERS

- Automatic/manual override fire extinguishers in engine room with warning system at both helm positions and incorporating engine air vent closure system
- Hand-operated fire extinguishers in all cabins, galley, crew and lower helm
- Separate automatic extinguisher in electrical space

BILGE PUMPS

- Automatic electric bilge pumps
- High capacity manual bilge pump with valve system and suction points in same areas

OTHER ITEMS SUPPLIED AS STANDARD

- Set of cutlery, crockery and glasses
- Set of towels (8 large, 8 small)
- Fenders (8) and warps (4)
- Set of manuals

82

MOTOR YACHT

- Fast, agile long-range cruiser with superb ride quality
- Outstanding efficiency from variable hull geometry
- 32ft (10m) long flybridge with optional spa bath and tender crane
- Separate wheelhouse with breakfast area
- Four beautifully appointed en suite cabins
- Choice of layouts for two, three or four berth crew accommodation



Enjoy long-distance motor yacht cruising over a wide range of speeds, up to an impressive 34 knots. The 82's unique deep-V hull design inspires confidence in all conditions.

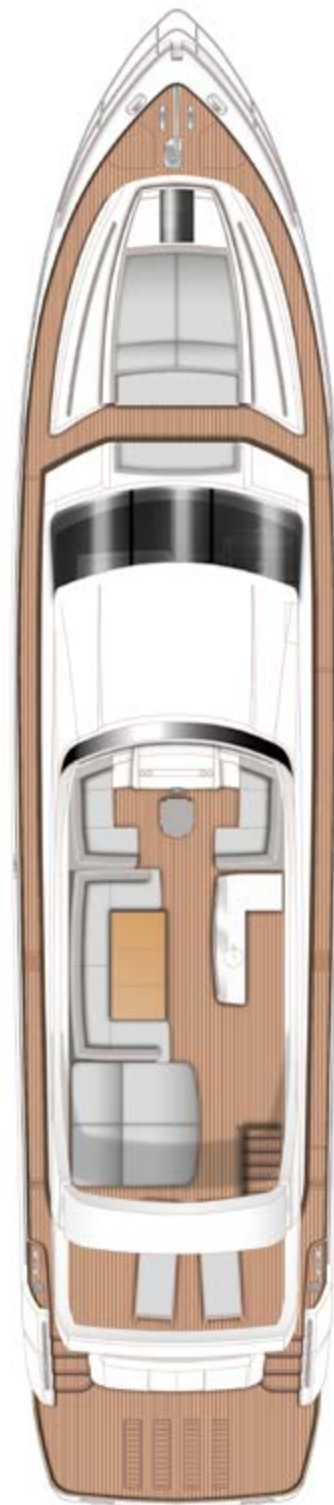




The light-filled main deck saloon incorporates relaxed, low-level furniture and a dining area which can be specified as open to the galley for a sociable entertaining space. There is also the option of a day head on the main deck.

On the lower deck you will discover four beautifully appointed en suite cabins, including the luxuriously finished full-beam master stateroom.





FLYBRIDGE



MAIN DECK



MAIN DECK WITH OPTIONAL DAY HEAD



LOWER DECK

82

MOTOR YACHT

PRINCIPAL DIMENSIONS

Length overall (incl. pulpit)	83ft 7in (25.5m)
Length overall (excl. pulpit)	82ft 8in (25.22m)
Beam	18ft 10in (5.74 m)
Draft	5ft 9in (1.75m)
Displacement approx.	50,700 kg (111,800lbs)*
Fuel capacity	1,417 gal/1,701 US gal/6,442l
Water capacity (incl. calorifier)	305 gal/366 US gal/1,386l

DECK FITTINGS

- Teak-laid transom platform, cockpit deck, flybridge, flybridge stairway, side decks and foredeck walkthrough
- Self-stowing 63kg/138lbs Delta anchor with 100m of chain
- Reversible electric anchor winch with foredeck, helm position and flybridge controls
- Twin electric-powered sternline mooring winches
- Foredeck seating and sunbathing area with coffee table
- Storage lockers for rope, fenders and foredeck sunbed cushions
- Telephone connection point
- Stern docking lights
- Transom doors giving direct access to lazarette and utility area

COCKPIT

- U-shaped seating and teak folding table
- Twin transom gates leading to bathing platform with electro-hydraulic raise/lower mechanism, foldaway swimming ladder, hot and cold shower
- Door leading to crew cabin/utility area and engine room area from side deck and transom
- Washbasin
- Liferaft stowage
- Remote control 3.8m telescopic passerelle with folding handrail

FLYBRIDGE

- Helm position with powered raise/lower console, repeat navigation equipment including radar/chartplotter and engine instrumentation
- L-shaped seating area with folding teak table
- Twin forward J-shaped seating
- Sunpad with storage below (option for built-in spa bath)
- Radio/MP3 with waterproof speakers
- Wetbar including sink with electric barbecue and top loading coolbox
- Optional crane

WHEELHOUSE

- Helm seat with electric adjustment
- U-shaped seating with table to port
- Helmsman's door to side deck and electric opening window to port
- Instrument console with engine instruments and fuel gauges
- Full engine instrumentation including fuel gauges, exhaust temperature, fuel contamination alarms, rudder position indicator
- Navigation system including colour radar, GPS and chartplotter (2 displays), VHF/RT, speed and distance log, echo sounder with alarm, autopilot, high speed magnetic compass and intercom to flybridge

- Controls for bow thruster, windscreen wipers, bilge pump and trim tabs (with indicator)
- Intercom to flybridge
- Chart table with light and chart stowage
- 24v and 240v control panel
- Toughened glass screen (clear for night vision)

DECK SALOON

- U-shaped seating area and two-seater sofa with coffee table
- Entertainment centre incorporating 50" LED TV on electric raise/lower mechanism and DVD, radio/MP3 system with surround sound system
- Sideboard unit with bottle and glass storage, refrigerator and icemaker
- Dining area (for 8 people) with sideboard units port and starboard

GALLEY

- 4-zone ceramic hob
- Combination microwave/conventional oven with grill
- Twin stainless-steel sinks with mixer tap
- Full height fridge/freezer
- Dishwasher
- Access door to side deck
- Lobby area with space for additional refrigerator or wine cooler and coffee machine

ACCOMMODATION

- All cabins and bathrooms feature opening portholes and air conditioning outlets
- All cabins feature 220/240v power points
- All mattresses pocket sprung
- All bathrooms feature full shower stalls, electric quietflush toilets, extractor fan and 240v shaver points

OWNER'S STATEROOM

- Large double bed with drawers below
- Dressing area with wardrobes with hanging and drawer storage
- Dressing table with chair
- Occasional table with seats fore and aft
- Built-in safe
- 46" LED TV and DVD, radio/MP3 system with surround sound
- En suite bathroom

FORWARD GUEST STATEROOM

- Large double bed with drawers below
- Walk-in wardrobe with shelves
- Dressing table with stool
- Deck hatch with skylight and blind
- 28" LED TV, stereo radio/MP3
- En suite bathroom

PORT GUEST CABIN

- Two single beds with drawers below (with the option of powered conversion to double)
- Wardrobe with shelves
- En suite bathroom

STARBOARD GUEST CABIN

- Large double bed with drawers below
- Wardrobe with shelves
- Dressing table with stool
- En suite bathroom with day access

LOWER ACCOMMODATION LOBBY

- The lobby area has a full height storage cupboard with the option of fitting an additional washer/dryer
- Under-floor storage

CREW QUARTERS

- Crew cabin with two single berths, wardrobe and storage lockers
- Bathroom with separate stall shower, electric quietflush toilet and washbasin
- Storage/utility area (optional additional crew cabin or mess area)
- Washing machine and dryer

INTERIOR FINISH

- Furniture in choice of Serotina Cherry or Light Oak with satin or high gloss finish. American Walnut or Rovere Oak available as an option
- Bathroom worktops and floors in choice of marble or granite
- Galley worktops in choice of granite or marble
- Choice of high quality carpet and upholstery fabric from extensive range
- Curtains, blinds or sunscreens to all windows and portholes
- Timber-laid galley and wheelhouse floors

POWER AND DRIVE SYSTEMS

- 5-bladed propellers in nickel aluminium bronze
- Bow thruster (240kgf/529lbf)
- Power-assisted electro-hydraulic steering system with hydraulic back-up
- Electronic engine and gear shift control systems
- Dripless shaft seals

ELECTRICAL SYSTEM

- **24 Volt:**
- 4 x heavy duty batteries for engine starting
- 6 x heavy duty auxiliary batteries
- 2 x 60 amp battery chargers charge both banks of batteries via an automatic switch charging system

ENGINE OPTIONS - DIESEL

Twin Caterpillar C32 A (2 x 1,622mhp)	Speed range: 30-33 knots†
Twin MTU 10V 2000 M94 (2 x 1,624mhp)	Speed range: 30-33 knots†
Twin Caterpillar C32 A (2 x 1,723mhp)	Speed range: 32-34 knots†

- Remote battery master switches with control switch at main panel
- LED lighting throughout
- **220/240 Volt:**
- 27kW diesel generator in own sound shield with water cooled specially silenced exhaust
- 2 x 63 amp shore support inlet
- Earth leakage safety trip, polarity check system, circuit breakers on all circuits
- Power points in all areas

FUEL SYSTEM

- Twin fuel tanks (in NS8 marine grade alloy) with interconnection system giving 1,417 gal/1,701 US gal/6,442l capacity
- High capacity duplex fuel filters/water traps with audible and visual fuel contamination warning system
- Remote fuel cocks in cockpit locker

WATER SYSTEM

- 265 gal/318 US gal/1,204l plus 40 gal/48 US gal/182l hot water calorifier, heated by engines and 240v immersion heater
- Electric quietflush WC system with 100 gal/120 US gal/455l holding tank

AIR CONDITIONING

- 153,000Btu chilled water system with outlets in all accommodation areas and incorporating reverse cycle heating with linked windscreen de-mist system. Suitable for tropical conditions (40°C)

FIRE EXTINGUISHERS

- Automatic/manual override fire extinguishers in engine room with warning system at both helm positions and incorporating engine air vent closure system
- Hand-operated fire extinguishers in all cabins, galley, utility, crew and lower helm (8)
- Separate automatic extinguisher in electrical space

BILGE PUMPS

- Automatic electric bilge pumps (7)
- High capacity manual bilge pump with valve system and suction points in same areas

OTHER ITEMS SUPPLIED AS STANDARD

- Set of cutlery, crockery and glasses
- Set of towels (8 large, 8 small)
- Fenders (8) and warps (4)
- Set of manuals

72

MOTOR YACHT

- Exceptional flybridge with crane for tender stowage
- Up to eight guests in four spacious cabins
- Private foredeck retreat and hydraulic bathing platform
- Class-defining single-level main deck saloon
- Strong performance with speeds of up to 35 knots
- Separate en suite accommodation for two crew with access from transom



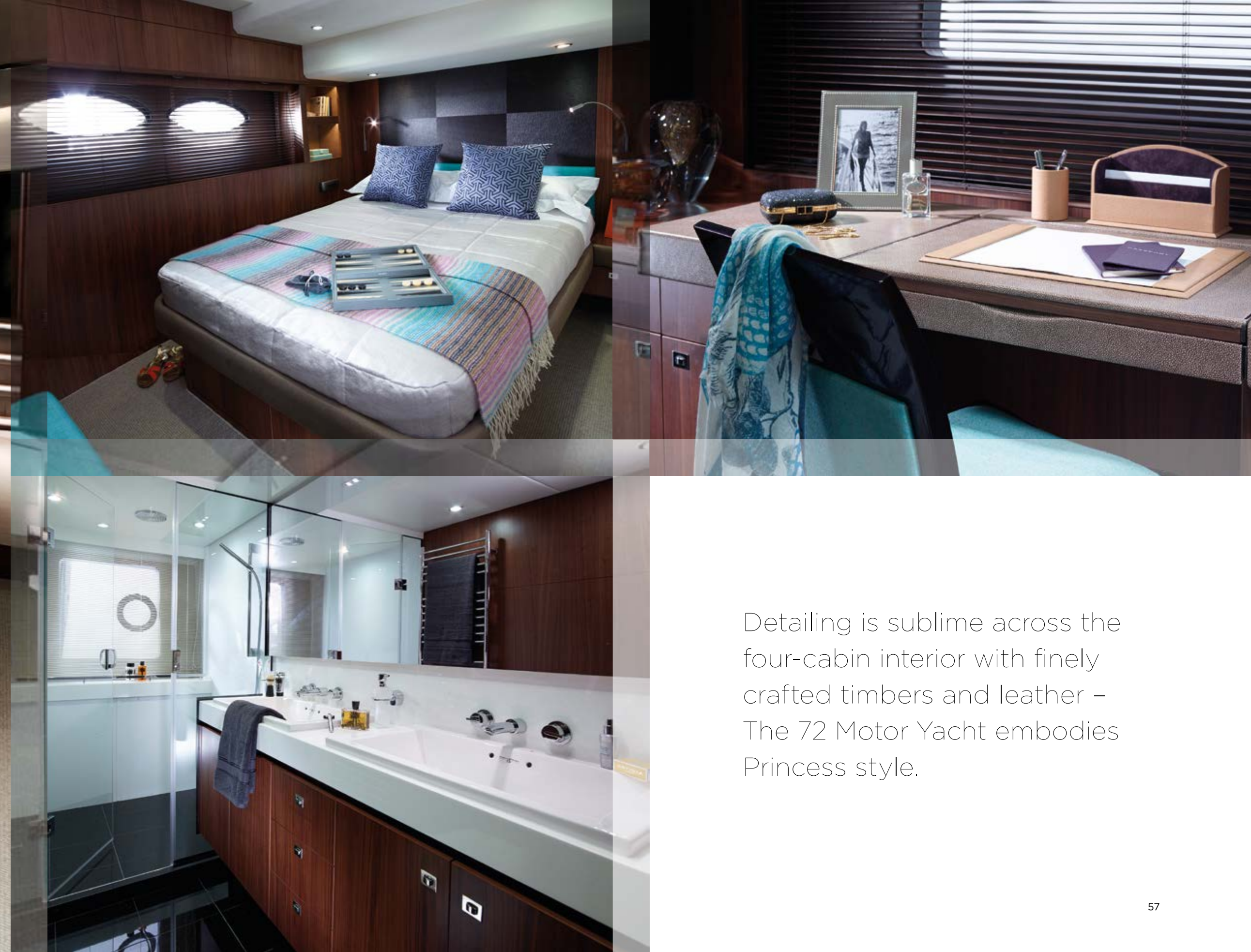
Her handling is instinctive and her agility peerless – the 72 is a true motor yacht, with timeless style and inspiring performance.





Light pours into
the one-level
deck saloon
and dining area





Detailing is sublime across the four-cabin interior with finely crafted timbers and leather – The 72 Motor Yacht embodies Princess style.



FLYBRIDGE



MAIN DECK



LOWER DECK

72

MOTOR YACHT

PRINCIPAL DIMENSIONS

Length overall (incl. pulpit)	73ft 4in (22.35m)
Length overall (excl. pulpit)	72ft 5in (22.07m)
Beam	18ft (5.49m)
Draft	5ft 6in (1.68m)
Displacement approx.	43,600kg (96,100lbs)*
Fuel capacity	1,100 gal/1,321 US gal/5,000l
Water capacity (incl. calorifier)	295 gal/355 US gal/1,342l

ENGINE OPTIONS - DIESEL

Twin MTU 10V 2000 M93 (2 x 1,523mhp)	Speed range: 32-34 knots†
Twin Caterpillar C32 A (2 x 1,622mhp)	Speed range: 34-36 knots†

DECK FITTINGS

- Teak-laid transom platform, cockpit deck, flybridge, flybridge stairway and stairs to side decks
- Self-stowing 50kg/110lbs Delta anchor with 90m chain
- Reversible electric anchor winch with foredeck, helm position and flybridge controls
- Stainless-steel cleats, fairleads and handrails
- Twin electric-powered sternline mooring winches
- Freshwater deck/anchor wash
- Foredeck seating and sunbathing area
- Storage lockers for rope, fenders and foredeck sunbed cushions
- Stern docking lights
- LED deck level lighting

COCKPIT

- U-shaped seating and teak folding table
- Twin transom gates leading to bathing platform with electro-hydraulic raise/lower mechanism, foldaway swimming ladder, hot and cold shower
- Lockable gas strut assisted hatch to engine room
- Transom access to crew cabin
- Lifteraft stowage locker
- Remote control telescopic passerelle (3.5m)
- Cockpit cover

FLYBRIDGE

- Helm position with powered raise/lower console, repeat navigation equipment including radar/chartplotter and engine instrumentation
- U-shaped seating area with folding teak table
- Sunpad aft with storage below
- Radio/MP3 with waterproof speakers
- Wetbar including sink with electric barbecue and top loading coolbox
- Electric crane (safe working load 420kg)

LOWER HELM POSITION

- Twin helm seats with electric fore and aft adjustment
- Helmsman's door to side deck
- Full engine instrumentation including fuel gauges, exhaust temperature, fuel contamination alarms, rudder position indicator
- Navigation system including colour radar, GPS and chartplotter (2 displays), VHF/RT, speed and distance log, echo sounder with alarm, autopilot and high speed magnetic compass
- Controls for bow thruster, windscreen wipers, bilge pump and trim tabs (with indicator)
- Automatic foghorn with loudhailer
- Chart table with light and chart stowage
- 24v and 240v control panel
- 12v outlet

- Red night lighting
- Toughened glass screen (clear for night vision)

DECK SALOON

- U-shaped sofa and coffee table
- Three-seater sofa
- Entertainment centre incorporating 46" LED TV on electric raise/lower mechanism and DVD, radio/MP3 system with surround sound system
- Sideboard unit with bottle and glass storage and refrigerator
- Dining area (for 8 people)

GALLEY

- 4-zone ceramic hob
- Combination microwave/conventional oven with grill
- Twin stainless-steel sinks with mixer tap
- Full height fridge/freezer
- Dishwasher
- Storage lockers, cupboards and drawers
- Electrically operated sliding glass partition from aft saloon

ACCOMMODATION

- All cabins and bathrooms feature opening portholes and air conditioning outlets
- All cabins feature 220/240v power points
- All mattresses pocket sprung (excluding crew)
- All bathrooms feature full shower stalls, electric quietflush toilets, extractor fan and 240v shaver points
- A combination washer/dryer is fitted in the lobby area

OWNER'S STATEROOM

- Large double bed with drawers below
- Dressing area with wardrobes with hanging and drawer storage
- Dressing table with chair
- Sofa
- Built-in safe
- 46" LED TV and DVD, radio/MP3 system with surround sound
- En suite bathroom

FORWARD GUEST CABIN

- Large double bed with drawers below
- Large wardrobe with shelves
- Dressing table with stool
- Deck hatch with skylight and blind
- Stereo radio/MP3
- En suite bathroom

PORT GUEST CABIN

- Two single beds with drawers below

- Wardrobe with shelves
- Dressing table with stool
- Bedside table with storage
- Storage lockers
- En suite bathroom

STARBOARD GUEST CABIN

- Large double bed with drawers below (with the option of powered sliding berths)
- Wardrobe with shelves
- Dressing table with stool
- Bedside table with storage
- Storage lockers
- En suite bathroom with day access

CREW CABIN

- Crew cabin with two single berths, wardrobe and storage lockers
- Bathroom with separate stall shower, electric quietflush toilet and washbasin
- Storage/utility area
- Access to engine room

INTERIOR FINISH

- Furniture in choice of Serotina Cherry or Light Oak with satin or high gloss finish. American Walnut or Rovere Oak available as an option
- Avonite worktops and tiled floors in all guest bathrooms
- Granite/marble worktop and timber-laid floor in galley
- Choice of high quality carpet and upholstery fabric from extensive range
- Curtains, blinds or sunscreens to all windows and portholes

POWER AND DRIVE SYSTEMS

- 5-bladed propellers in nickel aluminium bronze
- Bow thruster (170kgf/375lbf)
- Power-assisted electro-hydraulic steering system with hydraulic back-up
- Electronic engine and gear shift control systems
- Dripless shaft seals
- Engine room extractor fan with electronic time delay

ELECTRICAL SYSTEM

24 Volt:

- 4 x heavy duty batteries for engine starting
- 6 x heavy duty auxiliary batteries
- 2 x 60 amp battery charger charges both banks of batteries via an automatic switch charging system
- Remote battery master switches with control switch at main panel
- LED lighting throughout

220/240 Volt:

- 22.5kW diesel generator in own sound shield with water cooled specially silenced exhaust
- 2 x 63 amp shore support inlet
- Earth leakage safety trip, polarity check system, circuit breakers on all circuits
- Power points in all areas

FUEL SYSTEM

- Twin fuel tanks (in NS8 marine grade alloy) with interconnection system giving 1,100 gal/1,321 US gal/5,000l capacity
- Fuel fillers on port and starboard side decks
- High capacity duplex fuel filters/water traps with audible and visual fuel contamination warning system
- Remote fuel cocks in helm locker
- Fuel gauges at lower and upper helm positions

WATER SYSTEM

- 295 gal/355 US gal/1,342l plus 44 gal/53 US gal/200l hot water calorifier, heated by engines and 240v immersion heater
- Water level gauge
- Electric quietflush WC system with 100 gal/120 US gal/455l holding tank

AIR CONDITIONING

- 126,000Btu chilled water system with outlets in all accommodation areas and incorporating reverse cycle heating with linked windscreen de-mist system. Suitable for tropical conditions (40°C)

FIRE EXTINGUISHERS

- Automatic/manual override fire extinguishers in engine room with warning system at both helm positions and incorporating engine air vent closure system
- Hand-operated fire extinguishers in all cabins, galley, utility, crew and lower helm (8)
- Separate automatic extinguisher in electrical space

BILGE PUMPS

- Automatic electric bilge pumps (7)
- High capacity manual bilge pump with valve system and suction points in same areas

OTHER ITEMS SUPPLIED AS STANDARD

- Set of cutlery, crockery and glasses
- Set of towels (8 large, 8 small)
- Ensign staff
- Fenders (6) and warps (4)
- First aid kit
- Set of manuals



68

FLYBRIDGE

- Four spacious cabins with private stairway to owner's stateroom
- Separate accommodation for two crew
- Aft galley configuration for flexible entertaining
- Hydraulic bathing platform for tender launch and recovery
- Optional hardtop and crane enabling flybridge tender stowage
- Private foredeck and transom seating – a first for a yacht of this size



Surrounded by
sun, sea – and light.



The 68, our latest and most advanced flybridge yacht, includes four separate on-deck social areas, while the galley aft layout expands on a new concept for Princess with triple sliding doors and an electrically opening aft window converting the galley into a cockpit bar.

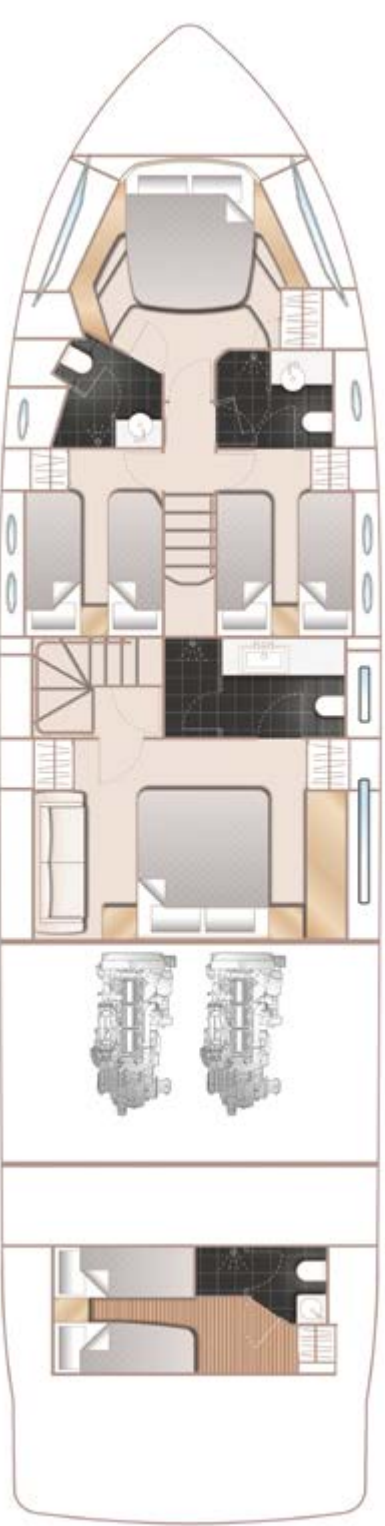
We have used all of our design and engineering knowledge to allow for the inclusion of more glass. The result is spectacular – breathtaking views everywhere you look. This incredible feel is continued in the full-beam stateroom, accessed from its own private stairway leading from the saloon.



FLYBRIDGE



MAIN DECK



LOWER DECK

68

FLYBRIDGE

DECK FITTINGS

- Teak-laid transom platform, cockpit deck, flybridge, flybridge stairway and stairs to side decks
- Self-stowing 40kg/88lbs Delta anchor with 40m chain
- Reversible electric anchor winch with foredeck, helm position and flybridge controls
- Stainless-steel cleats, fairleads and handrails
- Twin electric-powered sternline mooring winches
- Freshwater deck/anchor wash
- Foredeck escape hatch
- Foredeck seating and sunbathing area
- Fender lockers and foredeck rope locker
- LED deck level lighting

COCKPIT

- U-shaped seating and teak folding table
- Twin transom gates leading to bathing platform with electro-hydraulic raise/lower mechanism, foldaway swimming ladder, hot and cold shower
- Transom seat in teak with storage locker
- Lockable gas strut assisted hatch to engine room and lazarette
- Access to aft lazarette/optional crew cabin via transom door
- Liferaft stowage locker
- Cockpit cover

FLYBRIDGE

- Dual station instrumentation, controls and alarm system including VHF/RT, speed and distance log, echo sounder with alarm and autopilot
- U-shaped seating area with teak table
- L-shaped seat (converts to sunbed)
- Sunpad aft with storage below
- Radio/MP3 with waterproof speakers
- Wetbar including sink with electric barbecue and drawer refrigerator
- Console and seat covers

LOWER HELM POSITION

- Twin helm seats with fore and aft adjustment for helmsman
- Helmsman's door to side deck
- Full engine instrumentation including fuel gauges, exhaust temperature, fuel contamination alarms, rudder position indicator
- Navigation system including colour radar, GPS and chartplotter, VHF R/T, speed and distance log, echo sounder with alarm, autopilot and high speed magnetic compass
- Controls for bow thruster, windscreen wipers, bilge pump and trim tabs (with indicator)

PRINCIPAL DIMENSIONS

Length overall (excl. pulpit)	69ft 9in (21.25m)
Beam	17ft 8in (5.38m)
Draft	5ft 2in (1.58m)
Displacement approx.	37,500kg (82,673lbs)
Fuel capacity	900 gal/1,080 US gal/4,100l
Water capacity (incl. calorifier)	183 gal/220 US gal/836l

- Chart table with light and chart stowage
- 24v and 240v control panel
- 12v outlet
- Red night lighting
- Toughened glass screen (clear for night vision)

DECK SALOON

- Triple opening stainless-steel framed sliding doors to aft cockpit with integrated hinging window aft of galley
- U-shaped sofa and coffee table
- Two-seater sofa
- L-shaped seat opposite helm area with electric opening window to port
- Entertainment centre incorporating 46" LED TV on electric raise/lower mechanism and DVD, radio/MP3 system with surround sound system
- Sideboard unit with bottle and glass storage, refrigerator and icemaker
- Separate access to master stateroom
- Aft dining area

GALLEY

- 4-zone ceramic hob
- Combination microwave/conventional oven with grill
- Twin stainless-steel sinks with mixer tap
- Full height fridge/freezer
- Dishwasher
- Storage lockers, cupboards and drawers

ACCOMMODATION

- All cabins and bathrooms feature opening portholes
- All cabins feature 220/240v power points
- All mattresses pocket sprung (excluding crew)
- All bathrooms feature full shower stalls, electric quietflush toilets, extractor fan and 240v shaver points
- A combination washer/dryer is fitted in the stateroom lobby

OWNER'S STATEROOM

- Large double bed with drawers below
- Twin wardrobes with shelves
- Dressing table
- Sofa
- 40" LED TV and DVD, radio/MP3 system with surround sound
- Overhead and concealed lighting
- En suite bathroom

FORWARD GUEST CABIN

- Large double bed with drawers below
- Wardrobe with shelves
- Dressing table with stool

- Deck hatch with skylight and blind
- Overhead and individual berth lights
- En suite bathroom

PORT AND STARBOARD GUEST CABINS

- Two single beds (with the option of powered conversion to double)
- Wardrobe with shelves
- Storage lockers and drawers
- Overhead and concealed lighting
- En suite bathroom (with day access to starboard bathroom)

OPTIONAL AFT CABIN

- Two single beds with storage below
- Wardrobe with shelf
- Storage lockers and drawers
- Overhead and individual berth lights
- En suite bathroom with stall shower

INTERIOR FINISH

- Furniture in choice of Serotina Cherry or Light Oak with satin or high gloss finish, American Walnut or Rovere Oak available as an option
- Avonite worktops and tiled floors in all guest bathrooms
- Avonite worktop and timber-laid floor in galley
- Choice of high quality carpet and upholstery fabric from extensive range
- Curtains, blinds or sunscreens to all windows and portholes

POWER AND DRIVE SYSTEMS

- 5-bladed propellers in nickel aluminium bronze
- Bow thruster (170kgf/375lbf)
- Power-assisted electro-hydraulic steering system with hydraulic back-up
- Electronic engine and gear shift controls
- Dripless shaft seals
- Engine room extractor fan with electronic time delay

ELECTRICAL SYSTEM

- 24 Volt:
- 4 x heavy duty batteries for engine starting
- 4 x heavy duty auxiliary batteries
- 80 amp battery charger charges both banks of batteries via an automatic switch charging system
- Remote battery master switches with control switch at main panel
- LED lighting throughout

220/240 Volt:

ENGINE OPTIONS - DIESEL

Twin Caterpillar C18 A (2 x 1,150mhp)	Speed range: 30-32 knots†
Twin MAN V8 (2 x 1,200mhp)	Speed range: 31-33 knots†
Twin MAN V12 (2 x 1,400mhp)	Speed range: 33-35 knots†

- 11kW diesel generator in own sound shield with water cooled specially silenced exhaust
- 63-amp shore support inlet
- Earth leakage safety trip, polarity check system, circuit breakers on all circuits
- Power points in all areas

FUEL SYSTEM

- Twin fuel tanks (in NS8 marine grade alloy) with interconnection system giving 900 gal/1,080 US gal/4,100l capacity
- Fuel fillers on port and starboard side decks
- High capacity duplex fuel filters/water traps with audible and visual fuel contamination warning system
- Remote fuel cocks in cockpit locker
- Fuel gauges at lower helm console

WATER SYSTEM

- 184 gal/221 US gal/ 836l plus 16 gal/19 US gal/73l hot water calorifier, heated by engines and 240v immersion heater
- Water level gauge
- Deck filler
- Electric quietflush WC system with 60 gal/72 US gal/272l holding tank

FIRE EXTINGUISHERS

- Automatic/manual override fire extinguishers in engine room
- Hand-operated fire extinguishers in all cabins, galley and lower helm (6)

BILGE PUMPS

- Automatic electric bilge pumps (6)
- High capacity manual bilge pump with valve system and suction points in same areas

OTHER ITEMS SUPPLIED AS STANDARD

- Set of cutlery, crockery and glasses
- Set of towels (8 large, 8 small)
- Ensign staff
- Fenders (6) and warps (4)
- First aid kit
- Set of manuals

64

FLYBRIDGE

- Large flybridge with full wetbar, eight-person dining table and sunpad
- Class-leading four-cabin lower deck configuration
- Optional three-cabin layout with office or children's games room
- Hydraulic bathing platform for tender launch and recovery
- Optional en suite aft cabin for crew or occasional guests

The Princess 64 is the embodiment of the capable flybridge yacht. Dine in the spacious cockpit or relax on the flybridge with subtle lighting and teak decks adding to the atmosphere.



Every inch of the interior reflects the quality of Princess design and craftsmanship. From the 360 degrees of light and vision in the saloon to hand-finished surfaces, bespoke furnishings and woodwork.

A raised dining area opposite the fully equipped galley is perfect for friends and family.

Four perfectly proportioned cabins are found below decks, with a palatial master stateroom enjoying incredible light and views.



FLYBRIDGE



MAIN DECK



LOWER DECK

64

FLYBRIDGE

PRINCIPAL DIMENSIONS

Length overall (incl. pulpit)	64ft 10in (19.70m)
Length overall (excl. pulpit)	64ft (19.45m)
Beam	16ft 4in (5.03m)
Draft	4ft 9in (1.45m)
Displacement approx.	31,500kg (69,400lbs)*
Fuel capacity	750 gal/901 US gal/3,409l
Water capacity (incl. calorifier)	200 gal/240 US gal/909l

ENGINE OPTIONS - DIESEL

Twin Volvo D13-900 (2 x 900mhp)	Speed range: 28-30 knots†
Twin Caterpillar C18 A (2 x 1,015mhp)	Speed range: 30-32 knots†
Twin Caterpillar C18 A (2 x 1,150mhp)	Speed range: 32-34 knots†

DECK FITTINGS

- Teak-laid transom platform, cockpit deck, flybridge, flybridge stairway and stairs to side decks
- Self-stowing 40kg/88lbs Delta anchor with 40m of chain
- Reversible electric anchor winch with foredeck, helm position and flybridge controls
- Stainless-steel cleats, fairleads and handrails
- Dual station remote control searchlight
- Twin electric-powered sternline mooring winches
- Freshwater deck/anchor wash
- Foredeck rope locker

COCKPIT

- U-shaped seating with teak folding table
- Locker housing 240v shore support inlet and cable storage
- Lockable gas strut assisted hatches to engine room and lazarette
- Transom gate leading to bathing platform with electro-hydraulic raise/lower mechanism, foldaway swimming ladder, hot and cold shower, storage and deck light
- Lifteraft storage locker
- Cockpit cover
- Access to optional crew cabin

FLYBRIDGE

- Dual station instrumentation, controls and alarm system including VHF/RT, speed and distance log, echo sounder with alarm and autopilot
- U-shaped seating area with teak table
- Sunpad aft with storage below
- Radio/MP3 with waterproof speakers
- Wetbar including sink with electric barbecue and drawer refrigerator

LOWER HELM POSITION

- Twin helm seats with fore and aft adjustment for helmsman
- Helmsman's door to side deck and electric opening window to port
- Full engine instrumentation including fuel gauges, exhaust temperature, fuel contamination alarms, rudder position indicator
- Navigation system including colour radar, GPS and chartplotter, VHF/RT, speed and distance log, echo sounder with alarm, autopilot and high speed magnetic compass
- Controls for bow thruster, windscreen wipers, bilge pump and trim tabs (with indicator)
- Chart table with light and chart stowage
- 24v and 220/240v electrical control panels
- 12v outlet
- Red night lighting

DECK SALOON

- Triple opening stainless-steel framed sliding doors to aft cockpit
- U-shaped sofa with coffee table
- Two-seater sofa
- Entertainment centre incorporating 39" LED TV with electric raise/lower mechanism and DVD, radio/MP3 system with surround sound system
- Units with refrigerator, bottle and glass storage
- Dining area with U-shaped seating and 2 additional stools (to seat 6/7 in total)

GALLEY

- 4-zone ceramic hob
- Combination microwave/conventional oven with grill
- Twin stainless-steel sinks with mixer tap
- Full height fridge/freezer
- Dishwasher
- Icemaker
- Electrically operated sliding glass partition from aft saloon

ACCOMMODATION

- All cabins and bathrooms feature opening portholes
- All cabins feature 220/240v power points
- All mattresses pocket sprung (excluding crew)
- All bathrooms feature full shower stalls, electric quietflush toilets, extractor fan and 240v shaver points
- A combination washer/dryer is fitted in the lower lobby

OWNER'S STATEROOM

- Double bed with drawers below
- Large wardrobe
- Shelves, storage lockers and drawers
- Dressing table
- Sofa
- 32" LED TV
- Stereo radio, DVD, MP3
- Overhead and individual berth lights
- En suite bathroom

FORWARD GUEST CABIN

- Large double bed with drawers below
- Wardrobe with shelves
- Vanity unit
- Storage lockers and drawers
- Deck hatch with skylight and electric blind
- Stowage location for dinette stools (2)
- Overhead and individual berth lights
- En suite bathroom

STARBOARD GUEST CABIN

- Two single beds (with the option of sliding berths)
- Wardrobe with shelves
- Storage lockers and drawers
- Overhead and individual berth lights
- En suite bathroom with day access

PORT GUEST CABIN

- Two single beds with storage
- Wardrobe with shelf
- Storage lockers
- Overhead and individual berth lights
- Optional study layout with desk, chair and sofa

OPTIONAL AFT CABIN

- Two single berths
- Storage and hanging lockers
- Overhead and individual berth lights
- Bathroom with toilet, washbasin and shower

INTERIOR FINISH

- Furniture in choice of Serotina Cherry or Light Oak with satin or high gloss finish. American Walnut or Rovere Oak available as an option
- Avonite worktops and tiled floors in all guest bathrooms
- Avonite worktop and timber-laid floor in galley
- Choice of high quality carpet and upholstery fabric from extensive range
- Curtains, blinds or sunscreens to all windows and portholes

POWER AND DRIVE SYSTEMS

- 5-bladed propellers in nickel aluminium bronze
- Bow thruster (170kgf/375lbf)
- Power-assisted electro-hydraulic steering system with hydraulic back-up
- Electronic engine and gear shift controls
- Dripless shaft seals
- Engine room extractor fan with electronic time delay

ELECTRICAL SYSTEMS

- 24 Volt:**
 - 4 x heavy duty batteries for engine starting
 - 4 x heavy duty auxiliary batteries
 - 80 amp battery charger charges both banks of batteries via an automatic switch charging system
 - Remote battery master switches with control switch at main panel
 - LED lighting throughout
- 220/240 Volt:**
 - 11Kw diesel generator in own sound shield with water cooled specially silenced exhaust
 - 50 amp shore support inlet

- Earth leakage safety trip, polarity check system, circuit breakers on all circuits
- Power points in all areas

FUEL SYSTEM

- Twin fuel tanks (in NS8 marine grade alloy) with interconnection system giving 750 gal/901 US gal/3,409l capacity
- Fuel fillers on port and starboard side decks
- High capacity duplex fuel filters/water traps with audible and visual fuel contamination warning system
- Remote fuel cocks in cockpit locker
- Fuel gauges at lower helm console

WATER SYSTEM

- 184 gal/221 US gal/ 836l plus 16 gal/19 US gal/73l hot water calorifier, heated by engines and 240v immersion heater
- Water level gauge
- Deck filler
- Electric quietflush WC system with 60 gal/72 US gal/272l holding tank

FIRE EXTINGUISHERS

- Automatic/manual override fire extinguishers in engine room
- Hand-operated fire extinguishers in all cabins, galley and lower helm (6)

BILGE PUMPS

- Automatic electric bilge pumps (7)
- High capacity manual bilge pump with valve system and suction points in same areas

OTHER ITEMS SUPPLIED AS STANDARD

- Set of cutlery, crockery and glasses
- Set of towels (8 large, 8 small)
- Ensign staff
- Fenders (6) and warps (4)
- First aid kit
- Set of manuals

60

FLYBRIDGE

- Three spacious en suite cabins with a generous full-beam owner's stateroom
- Large aft saloon with galley forward and elevated dining area
- Hydraulic bathing platform as standard for tender stowage, launch and recovery
- Two different flybridge arrangements to complement the optional hardtop
- Optional en suite accommodation for two crew





The 60 is acknowledged as the finest boat of her size and style.

Fast, responsive and unbelievably quiet, the balance of space and speed is a remarkable feat of design and engineering. A perfect marriage of power and hull design gives the kind of acceleration and control that can only be described as exhilarating.





Princess design allows so much light into the interior. Bespoke blinds are then integrated to give you complete control of the atmosphere you want to create – day or night.



In the saloon and cabins our build quality integrates multiple layers of insulation, resulting in whisper-quiet sound levels. Gloss wenge and inlaid polished stainless-steel furniture details, hand-stitched Italian leather panelling, a frosted glass screen that retracts at the touch of a button – details and features are always of the highest specification.





FLYBRIDGE



FLYBRIDGE WITH HARDTOP



MAIN DECK



LOWER DECK

60

FLYBRIDGE

DECK FITTINGS

- Teak-laid transom platform, cockpit deck, flybridge stairway and stairs to side decks
- Self-stowing 25kg/55lbs Delta anchor with 40m of chain
- Reversible electric anchor winch with foredeck, helm position and flybridge controls
- Stainless-steel cleats, fairleads and handrails
- Dual station remote control searchlight

COCKPIT

- U-shaped seating and teak folding table
- Locker housing 240v shore support inlet and cable storage
- Lockable gas strut assisted hatch to engine room
- Transom gate leading to bathing platform with electro-hydraulic raise/lower mechanism, foldaway swimming ladder, hot and cold shower, storage and deck light
- Storage locker for fenders and liferaft
- Cockpit cover

FLYBRIDGE

- Dual station instrumentation, controls and alarm system including VHF/RT, speed and distance log, echo sounder with alarm and autopilot
- U-shaped seating area and teak table with removable centre section
- L-shaped seat (converts to sunbed)
- Radio/iPod/MP3 with waterproof speakers
- Wetbar including sink with electric barbecue and top loading coolbox
- When optional hardtop is selected a sunbed is fitted aft with forward facing seats to starboard side

LOWER HELM POSITION

- Twin helm seats with fore and aft adjustment for helmsman
- Electric opening windows at helm position and port side
- Full engine instrumentation including fuel gauges, exhaust temperature, fuel contamination alarms, rudder position indicator
- Navigation system including colour radar, GPS and chartplotter, VHF/RT, speed and distance log, echo sounder with alarm, autopilot and high speed magnetic compass
- Controls for bow thruster, windscreen wipers, bilge pump and trim tabs (with indicator)
- Chart table with light and chart stowage
- 24v and 220/240v electrical control panels
- 12v outlet
- Red night lighting

PRINCIPAL DIMENSIONS

Length overall (incl. pulpit)	61ft 1in (18.61m)
Length overall (excl. pulpit)	60ft 3in (18.36m)
Beam	15ft 10in (4.83m)
Draft	4ft 2in (1.27m)
Displacement approx.	25,000kg (55,100lbs)*
Fuel capacity	615 gal/739 US gal/2,800l
Water capacity (incl. calorifier)	175 gal/210 US gal/793l

DECK SALOON

- Triple opening stainless-steel steel framed sliding doors to aft cockpit
- U-shaped sofa with coffee table
- Two-seater sofa to port
- Entertainment centre incorporating 46" LED TV with electric raise/lower mechanism and DVD, radio/MP3 system with surround sound system
- Sideboard units with refrigerator, bottle and glass storage and icemaker
- Dining area with U-shaped seating and 2 additional stools (to seat 6 in total)

GALLEY

- 4-zone ceramic hob
- Combination microwave/conventional oven with grill
- Twin stainless-steel sinks with mixer tap
- Full height fridge/freezer
- Electrically operated sliding glass partition from aft saloon

ACCOMMODATION

- All cabins and bathrooms feature opening portholes
- All cabins feature 220/240v power points
- All mattresses pocket sprung (excluding crew)
- All bathrooms feature full shower stalls, electric quietflush toilets, extractor fan and 240v shaver points
- A combination washer/dryer is fitted in the lower lobby

OWNER'S STATEROOM

- Large double bed with drawers below
- Twin bedside tables
- Wardrobe with shelves
- Dressing table
- Sofa
- 40" LED TV
- Stereo radio, DVD, MP3
- Overhead and individual berth lights
- En suite bathroom

FORWARD GUEST CABIN

- Large double bed with drawers below
- Wardrobe with shelves
- Vanity unit
- Storage lockers and drawers
- Deck hatch with fly screen and blind
- Stowage location for dinette stools (2)
- Overhead and individual berth lights
- En suite bathroom with day access

STARBOARD GUEST CABIN

- Two single beds (with the option of powered conversion to double)
- Wardrobe with shelves
- Storage lockers
- Overhead and individual berth lights
- En suite bathroom

OPTIONAL AFT CABIN

- Two single berths with storage below
- Storage lockers
- Overhead and individual berth lights
- Bathroom with toilet, washbasin and shower

INTERIOR FINISH

- Furniture in choice of Serotina Cherry or Light Oak with satin or high gloss finish. American Walnut or Rovere Oak available as an option
- Avonite worktops and tiled floors in all guest bathrooms
- Avonite worktop and timber-laid floor in galley
- Choice of high quality carpet and upholstery fabric from extensive range
- Curtains, blinds or sunscreens to all windows and portholes

POWER AND DRIVE SYSTEMS

- 4-bladed propellers in nickel aluminium bronze
- Bow thruster (130kgf/287lbf)
- Power-assisted electro-hydraulic steering with hydraulic back-up system
- Electronic engine and gear shift controls
- Dripless shaft seals
- Engine room extractor fans with electronic time delay

ELECTRICAL SYSTEMS

24 Volt:

- 4 x heavy duty batteries for engine starting
- 4 x heavy duty auxiliary batteries
- 60 amp battery charger charges both banks of batteries via an automatic switch charging system
- Remote battery master switches with controls at main switch panel
- LED lighting throughout
- 220/240 Volt:**
- 9.5kW diesel generator in own sound shield with water cooled specially silenced exhaust
- Earth leakage safety trip, polarity check system, circuit breakers on all circuits
- Power points in all areas

ENGINE OPTIONS - DIESEL

Twin Volvo D13-800 (2 x 800mhp)	Speed range: 31-33 knots*
Twin Volvo D13-900 (2 x 900mhp)	Speed range: 33-35 knots*

FUEL SYSTEM

- Twin fuel tanks (in NS8 marine grade alloy) with interconnection system giving 615 gal/739 US gal/2,800l capacity
- Fuel fillers on port and starboard side decks
- High capacity duplex fuel filters/water traps with audible and visual fuel contamination warning system
- Remote fuel cocks in cockpit locker
- Fuel gauges at lower helm position

WATER SYSTEM

- 159 gal/191 US gal/720l plus 16 gal/19 US gal/73l hot water calorifier and heated by engines and 240v immersion heater
- Water level gauge
- Deck filler

FIRE EXTINGUISHERS

- Automatic/manual override fire extinguishers in engine room
- Hand-operated fire extinguishers in all cabins, galley and lower helm

BILGE PUMPS

- Automatic electric bilge pumps (6)
- High-capacity manual bilge pump with valve system and suction points in same areas

OTHER ITEMS SUPPLIED AS STANDARD

- Ensign staff
- Fenders (6) and warps (4)
- First aid kit
- Set of manuals
- Quilted bedspreads in all cabins (except optional crew cabin)

56

FLYBRIDGE

- Three generous cabins with two en suites each with a separate stall shower
- Aft saloon and separate forward dining area and galley
- Optional hardtop and electrically operated sunroof
- Port and starboard boarding to cockpit
- Optional single berth crew cabin with en suite



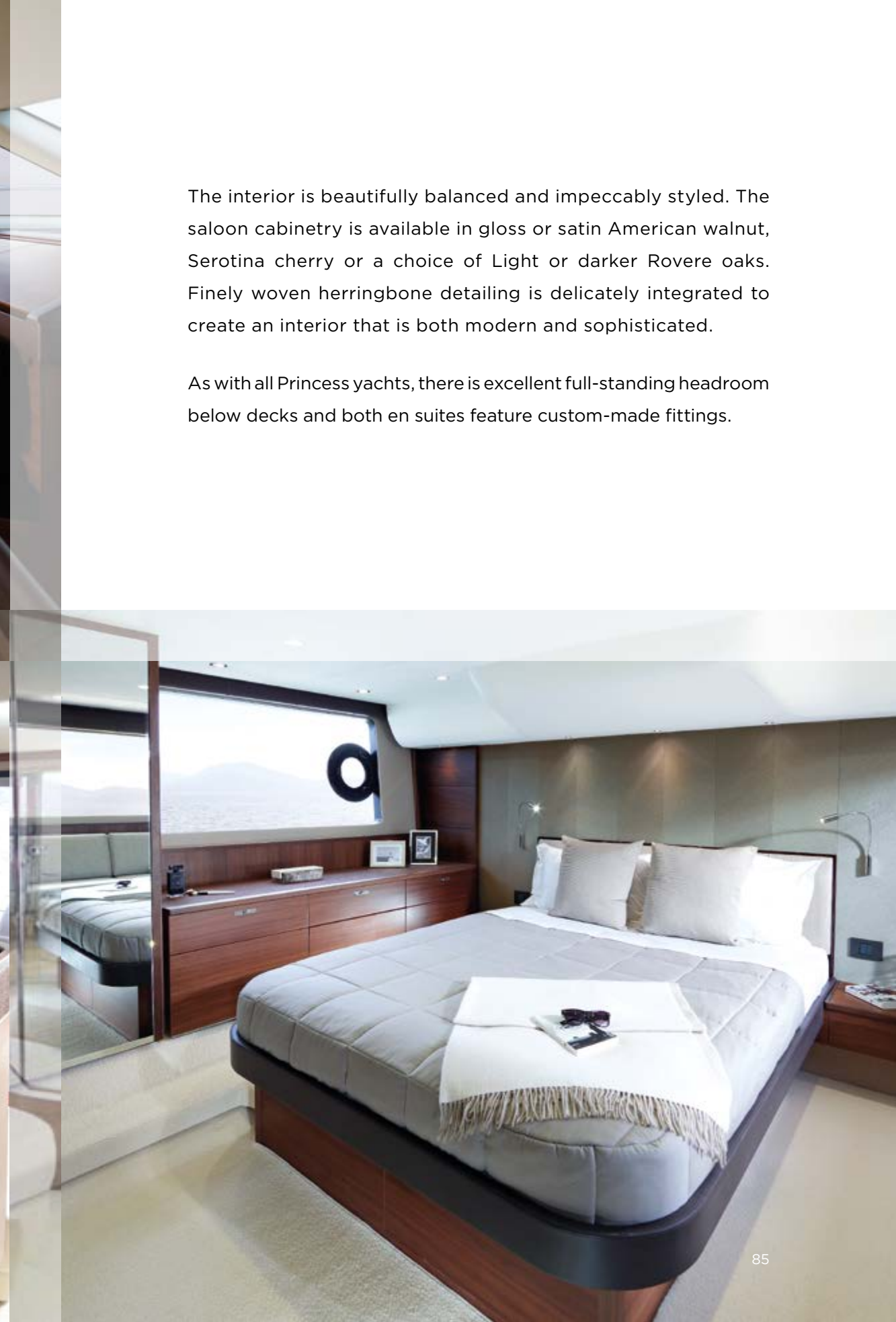


The 56 offers you an unrivalled level of space and ability

Princess design is renowned for making the most of every foot of hull length, but the 56 is something of a breakthrough in layout and features.

With a top speed of up to 34 knots she moves across the water with nimble composure. The flybridge features a convertible sunbed, twin helm seats, a wetbar, barbecue and dining area. There is also a triple sunpad on the foredeck.





The interior is beautifully balanced and impeccably styled. The saloon cabinetry is available in gloss or satin American walnut, Serotina cherry or a choice of Light or darker Rovere oaks. Finely woven herringbone detailing is delicately integrated to create an interior that is both modern and sophisticated.

As with all Princess yachts, there is excellent full-standing headroom below decks and both en suites feature custom-made fittings.



FLYBRIDGE



MAIN DECK



LOWER DECK

56

FLYBRIDGE

PRINCIPAL DIMENSIONS

Length overall (incl. pulpit)	59ft 5in (18.11m)
Length overall (excl. pulpit)	57ft 6in (17.53m)
Beam	15ft 7in (4.76m)
Draft	4ft 3in (1.29m)
Displacement approx.	24,600kg (54,200lbs)
Fuel capacity	582 gal/699 US gal/2,650l
Water capacity (incl. calorifier)	130 gal/156 US gal/592l

ENGINE OPTIONS - DIESEL

Twin Caterpillar C12 A (2 x 715mhp)	Speed range: 29-31 knots†
Twin Volvo D13-800 (2 x 800mhp)	Speed range: 32-34 knots†

DECK FITTINGS

- Teak-laid transom platform, cockpit deck, flybridge stairway and stairs to side decks
- Self-stowing 25kg/55lbs Delta anchor with 40m of chain
- Reversible anchor winch with foredeck, helm position and flybridge controls
- Stainless-steel cleats, fairleads and handrails
- Dual station remote control searchlight

COCKPIT

- U-shaped seating with teak table
- Locker housing 240v shore support inlet
- Lockable gas strut assisted hatch to engine room and lazarette
- Transom gate leading to bathing platform (with optional electro-hydraulic raise/lower mechanism)
- Dinghy chock system
- Cockpit cover

FLYBRIDGE

- Dual station instrumentation, controls and alarm system including VHF/RT, speed and distance log, echo sounder with alarm and autopilot
- Large seating area with teak table
- L-shaped seat (converts to sunbed)
- Loudspeakers linked to saloon stereo
- Wetbar including sink with electric barbecue, and refrigerated coolbox

LOWER HELM POSITION

- Twin helm seats with fore and aft adjustment for helmsman
- Electric opening windows at helm position and port side
- Full engine instrumentation including fuel gauges, exhaust temperature and engine warning system and rudder position indicator
- Navigation system including VHF/RT, speed and distance log, echo sounder with alarm, autopilot and high speed magnetic compass
- Controls for bow thruster, windscreen wipers, bilge pump and trim tabs (with indicator)
- Chart table with light and chart stowage
- 12v outlet
- Red night lighting
- 24v and 220/240v electrical control panels

DECK SALOON

- Triple stainless-steel framed sliding doors to cockpit
- U-shaped sofa with coffee table
- Two-seater sofa to port
- 46" LED TV with electric raise/lower mechanism
- Sideboard units with refrigerator, bottle and glass storage and radio/MP3
- Dining area with U-shaped seating and 2 additional stools (to seat 6 in total)

GALLEY

- 3-zone ceramic hob
- Hob extractor
- Combination microwave/conventional oven with grill
- Stainless-steel sink with monobloc mixer tap
- Refrigerator with freezer compartment
- Waste bin
- Chopping board
- Provision for dishwasher and additional refrigerator

ACCOMMODATION

- All cabins and bathrooms feature opening portholes
- All cabins feature 220/240v power points
- All mattresses pocket sprung (excluding crew)
- All bathrooms feature full shower stalls, electric quietflush toilets, extractor fan and 240v shaver points
- A washer/dryer may be optionally installed below the stairway to the lower accommodation

OWNER'S STATEROOM

- Large double bed with drawers below
- Wardrobe with shelves
- Dressing table
- Sofa
- Stereo radio, MP3
- Overhead and individual berth lights
- En suite bathroom

FORWARD GUEST CABIN

- Large double bed with drawers below
- Wardrobe with shelves
- Vanity unit
- Storage lockers and drawers
- Overhead and individual berth lights
- Deck hatch with fly screen and blind
- En suite bathroom with day access

STARBOARD GUEST CABIN

- Two full-size single beds
- Wardrobe with shelf
- Storage lockers
- Overhead and individual berth lights

OPTIONAL AFT CABIN

- Single berth
- Storage space
- Overhead and individual berth lights
- Electric quietflush toilet and washbasin

INTERIOR FINISH

- Furniture in choice of Serotina Cherry or Light Oak with satin or high gloss finish. American Walnut or Rovere Oak available as an option
- Avonite worktops and tiled floors in all guest bathrooms
- Avonite worktop and timber-laid floor in galley
- Choice of high quality carpet and upholstery fabric from extensive range
- Curtains, blinds or sunscreens to all windows and portholes

POWER AND DRIVE SYSTEMS

- 4-bladed propellers in nickel aluminium bronze
- Bow thruster (130kgf/287lbf)
- Power-assisted electro-hydraulic steering system with hydraulic back-up
- Electronic engine and gear shift controls
- Dripless shaft seals
- Engine room extractor fan with electronic time delay

ELECTRICAL SYSTEMS

24 Volt:

- 4 x heavy duty batteries for engine starting
- 4 x heavy duty auxiliary batteries
- 60 amp battery charger charges both banks of batteries via an automatic switch charging system
- Remote battery master switches with control switch at main panel
- LED lighting throughout

220/240 Volt:

- 9.5kW diesel generator in own sound shield with water cooled specially silenced exhaust
- Polarity check system
- Earth leakage safety trip
- Power points in all areas

FUEL SYSTEM

- Twin fuel tanks (in NS8 marine grade alloy) with interconnection system giving 582 gal/699 US gal/2,650l capacity
- Fuel fillers on port and starboard side decks
- High capacity duplex fuel filters/water traps with audible and visual fuel contamination warning system
- Remote fuel cocks in cockpit locker
- Fuel gauges at lower helm console

WATER SYSTEM

- 114 gal/137 US gal/520l plus 16 gal/19 US gal/73l hot water calorifier, heated by engines and 240v immersion heater
- Water level gauge

FIRE EXTINGUISHERS

- Automatic/manual override fire extinguishers in engine room
- Hand-operated fire extinguishers (5) in owner's stateroom, forward stateroom, starboard cabin, galley and lower helm

BILGE PUMPS

- Automatic electric bilge pumps (5)
- High capacity manual bilge pump with valve system and suction points in same areas

OTHER ITEMS SUPPLIED AS STANDARD

- Ensign staff
- Fenders (6) and warps (4)
- First aid kit
- Set of manuals

52

FLYBRIDGE

- Remarkable handling and manoeuvrability from our latest variable-geometry hull
- Effortless power with a top speed of up to 32 knots
- The finest master stateroom on a boat of this size
- Galley aft layout for superb on-deck dining
- Three cabins plus an optional crew or child's cabin







In the saloon, our wraparound windows let in so much light. The well-equipped galley is located aft, serving both the saloon and cockpit and resulting in a hugely versatile entertaining space.

The flybridge extends back over the cockpit and includes a full dining area with a barbecue, fridge and wetbar, while the twin-seat helm station provides great visibility. The master stateroom features full headroom around the double berth, a sofa and hull-side windows with opening portholes.

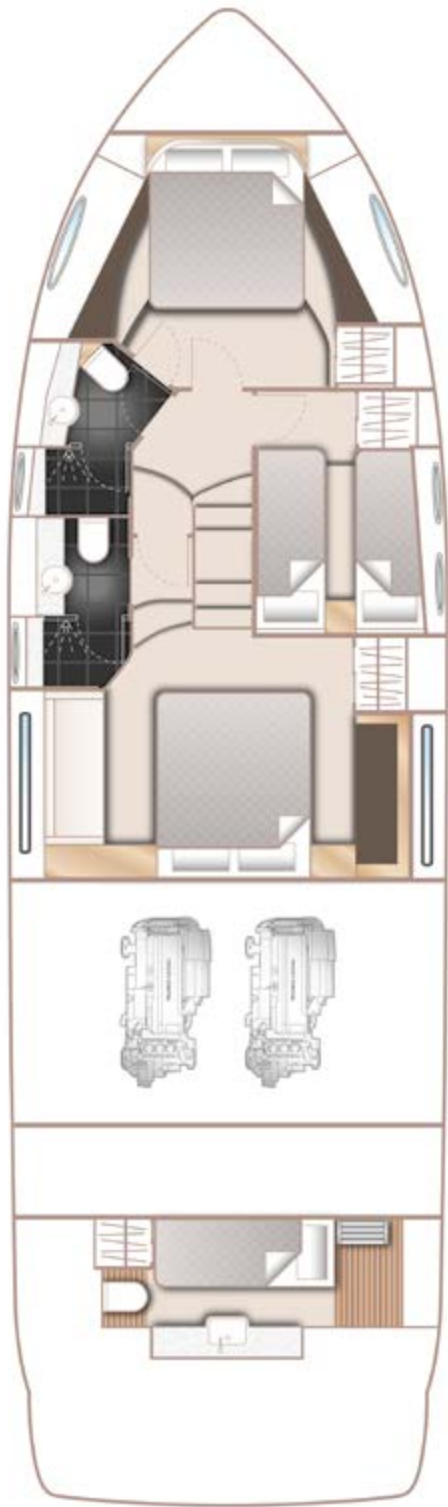




FLYBRIDGE



MAIN DECK



LOWER DECK

52

FLYBRIDGE

PRINCIPAL DIMENSIONS

Length overall (incl. pulpit)	54ft 8in (16.66m)
Length overall (excl. pulpit)	53ft 8in (16.36m)
Beam	15ft 7in (4.75m)
Draft	4ft 1in (1.25m)
Displacement approx.	23,600kg (52,000lbs)*
Fuel capacity	528 gal/634 US gal/2,400l
Water capacity (incl. calorifier)	133 gal/160 US gal/608l

ENGINE OPTIONS - DIESEL

Twin Volvo D11-670 (2 x 670mhp)	Speed range: 29-31 knots†
Twin Caterpillar C12 A (2 x 715mhp)	Speed range: 30-32 knots†
Twin Volvo D11-725 (2 x 725mhp)	Speed range: 30-32 knots†

DECK FITTINGS

- Teak-laid transom platform, cockpit deck, flybridge stairway and stairs to side decks
- Self-stowing 25kg/55lbs Delta anchor with 40m of chain
- Reversible anchor winch with foredeck, helm position and flybridge controls
- Stainless-steel cleats, fairleads and handrails
- Dual station remote control searchlight

COCKPIT

- Upholstered seating with teak table
- Locker housing 240v shore support inlet
- Lockable gas strut assisted hatch to aft lazarette/ optional crew cabin
- Lockable gas strut assisted hatch to engine room/ lazarette
- Transom gate leading to bathing platform (with optional electro-hydraulic raise/lower mechanism)
- Dinghy chock system
- Lifteraft storage locker
- Cockpit cover

FLYBRIDGE

- Dual station instrumentation, controls and alarm system including VHF/RT, speed and distance log, echo sounder with alarm and autopilot
- Large upholstered seating area with teak table
- L-shaped seat (converts to sunbed)
- Loudspeakers linked to saloon stereo
- Wetbar including sink, storage and optional barbecue
- Refrigerated top loading coolbox
- Console and seat cover

LOWER HELM POSITION

- Twin helm seats with fore and aft adjustment for helmsman
- Full engine instrumentation including fuel gauges, exhaust temperature and engine warning system and rudder position indicator
- Navigation system including VHF/RT, speed and distance log, echo sounder with alarm, autopilot and high speed magnetic compass
- Controls for bow thruster, windscreen wipers, bilge pump and trim tabs (with indicator)
- Chart table with light and chart stowage
- 12v outlet
- Red night lighting
- 24v and 220/240v electrical control panels
- Electric opening window

DECK SALOON

- Stainless-steel framed sliding door to cockpit with separate stainless-steel framed opening door aft of galley
- U-shaped sofa with dining table
- Two-seater sofa to starboard (with optional TV on electric raise/lower mechanism)
- Electric drop window to port (as well as at helm position)
- Stereo radio,iPod/MP3 with saloon and exterior speakers
- Sideboard units with glass, bottle and general stowage and drinks refrigerator
- Stools (2)

GALLEY

- 3-zone ceramic hob
- Hob extractor
- Combination microwave/conventional oven with grill
- Stainless-steel sink with monobloc mixer tap
- Refrigerator with freezer compartment
- Waste bin
- Chopping board
- Provision for dishwasher
- Storage lockers and drawers

ACCOMMODATION

- All cabins and bathrooms feature opening portholes
- All cabins feature 220/240v power points
- All mattresses pocket sprung (excluding crew)
- All bathrooms feature full shower stalls, electric quietflush toilets, extractor fan and 240v shaver points

OWNER'S STATEROOM

- Large double bed with drawers below
- Wardrobe with shelves
- Dressing table
- Sofa
- Overhead and individual berth lights
- Stereo radio, MP3
- En suite bathroom

FORWARD GUEST CABIN

- Large double bed with drawers below
- Vanity unit
- Wardrobe with shelves
- Storage lockers and drawers
- Overhead and individual berth lights
- Deck hatch with fly screen and blind
- En suite bathroom with day access

STARBOARD GUEST CABIN

- Two full-size single beds (with optional sliding berth conversion to double)
- Wardrobe with shelf
- Storage lockers
- Overhead and individual berth lights

OPTIONAL CREW CABIN

- Single bed
- Storage space
- Overhead and individual berth lights
- Electric quietflush toilet and washbasin

INTERIOR FINISH

- Furniture in choice of Serotina Cherry or Light Oak with satin or high gloss finish. American Walnut or Rovere Oak available as options
- Avonite worktops and tiled floors in all guest bathrooms
- Avonite worktop and timber-laid floor in galley
- Choice of high quality carpet and upholstery fabric from extensive range
- Curtains, blinds or sunscreens to all windows and portholes

POWER AND DRIVE SYSTEMS

- 4-bladed propellers in nickel aluminium bronze
- Bow thruster (120kgf/265lbf)
- Power-assisted electro-hydraulic steering system with hydraulic back-up
- Electronic engine and gear shift controls
- Dripless shaft seals
- Engine room extractor fans with electronic time delay

ELECTRICAL SYSTEMS

- **24 Volt:**
 - 4 x heavy duty batteries for engine starting
 - 4 x heavy duty auxiliary batteries
 - 60 amp battery charger charges both banks of batteries via an automatic switch charging system
- Remote battery master switches with control switch at main panel
- LED lighting throughout
- **220/240 Volt:**
 - 7kW diesel generator in own sound shield with water cooled specially silenced exhaust
- Polarity check system
- Earth leakage safety trip
- Power points (240v) in all areas

FUEL SYSTEM

- Twin fuel tanks (in NS8 marine grade alloy) with interconnection system giving 528 gal/634 US gal/ 2,400l capacity
- Fuel fillers on port and starboard side decks
- High-capacity fuel filters/water traps
- Remote fuel isolation controls in cockpit locker

WATER SYSTEM

- 117 gal/141 US gal/ 536l plus 16 gallons/19 US gal/73l hot water calorifier, heated by engines and 240v immersion heater
- Water level gauge

FIRE EXTINGUISHERS

- Automatic/manual override fire extinguishers in engine room
- Hand-operated fire extinguishers (5) in owner's stateroom, forward stateroom, starboard cabin, galley/ aft saloon and lower helm

BILGE PUMPS

- Automatic electric bilge pumps (5)
- High capacity manual bilge pump with valve system and suction points in same areas

OTHER ITEMS SUPPLIED AS STANDARD

- Ensign staff
- Fenders (6) and warps (4)
- First aid kit
- Set of manuals

43

FLYBRIDGE

- Multi-award-winning design and seakeeping
- Deep windows wrap around the entire main deck
- Versatile accommodation for up to six guests
- Flybridge with dining and convertible seating to create a sunpad







The amount of interior space is remarkable as is the level of luxury on offer. Indulgent gloss or pure satin cabinetry, two incredible en suites, each with its own separate shower stall, and a comprehensively equipped galley underpin the high specification of this award-winning yacht.

The forward master cabin enjoys excellent headroom and includes plentiful stowage, while the guest cabin can be specified with electrically sliding berths to effortlessly convert a double cabin into a twin.





FLYBRIDGE



MAIN DECK



LOWER DECK

43

FLYBRIDGE

DECK FITTINGS

- Teak-laid transom platform, cockpit deck, flybridge stairway and stairs to side decks
- Reversible electric anchor winch with foredeck, helm position and flybridge controls
- Self-stowing 20kg/44lbs Delta anchor with 40m of chain
- Stainless-steel cleats, fairleads and handrails
- Dual station remote control searchlight

COCKPIT

- Upholstered seating with folding teak table
- Locker housing 240v shore support inlet
- Lockable gas strut assisted hatch to engine room/ lazarette
- Overboard vented, self-draining locker for 2 gas bottles
- Twin transom gates leading to bathing platform (with optional electro-hydraulic raise/lower mechanism)
- Transom bathing platform with foldaway swimming ladder, hot and cold shower
- Dinghy chock system
- Lifteraft storage locker
- Cockpit cover

FLYBRIDGE

- Dual station instrumentation, controls and alarm system including VHF/RT, speed and distance log, echo sounder with alarm and autopilot
- Large U-shaped upholstered seating with folding teak table
- L-shaped seat (converts to sunbed)
- Loudspeakers linked to saloon stereo
- Refrigerated top loading coolbox
- Console and seat cover

LOWER HELM POSITION

- Twin helm seats with fore and aft adjustment for helmsman
- Full engine instrumentation including fuel gauges, exhaust temperature and engine warning system and rudder position indicator
- Navigation system including VHF/RT, speed and distance log, echo sounder with alarm, autopilot and high speed magnetic compass
- Controls for bow thruster, windscreen wipers, bilge pump and trim tabs (with indicator)
- Chart table with light and chart stowage
- 24v and 220/240v electrical control panels
- Black mesh sunscreen
- 12v outlet
- Red night lighting
- Sliding tinted side window adjacent to helmsman

PRINCIPAL DIMENSIONS

Length overall (inc pulpit)	47ft 6in (14.5m)
Length overall (excl pulpit)	46ft 4in (14.14m)
Beam	13ft 11in (4.25m)
Draft	3ft 9in (1.14)
Displacement approx	15,100kg (33,300lbs)*
Fuel capacity	300 gal/360 US gal/1,363l
Water capacity (incl calorifier)	100 gal/120 US gal/455l

DECK SALOON

- Triple stainless-steel framed sliding doors to cockpit
- U-shaped sofa with dining table to starboard (converts to double berth)
- Moveable 2-seater sofa
- Stereo radio/MP3 player with saloon and flybridge speakers
- Sideboard units with glass, bottle and general storage and space for optional refrigerator
- Clock and barometer
- Optional TV on electric raise/lower mechanism

GALLEY

- 3-zone gas hob with flame-failure device
- Hob extractor
- Combination microwave/conventional oven with grill
- Stainless-steel sink with monobloc mixer tap
- Refrigerator with freezer compartment
- Waste bin
- Dedicated crockery and cutlery stowage
- Chopping board
- Under-floor storage compartment
- Lift up stairs with storage compartment and provision for washer/dryer
- Storage lockers and provision for dishwasher

ACCOMMODATION

- All cabins and bathrooms feature opening portholes
- All cabins feature 220/240v power points
- All mattresses pocket sprung
- All bathrooms feature full shower stalls, electric quietflush toilets, extractor fan and 240v shaver points

OWNER’S CABIN

- Large double bed with drawers below
- Wardrobe with shelves
- Vanity unit
- Storage lockers and drawers
- Deck hatch with flyscreen and blind
- Overhead and individual berth lights
- En suite bathroom

STARBOARD GUEST CABIN

- Two single beds with storage below (with option of powered sliding berth)
- Bedside table
- Wardrobe with shelves
- Storage lockers and drawers
- Overhead and individual berth lights
- En suite bathroom with day access

ENGINE OPTIONS – DIESEL

Twin Volvo Penta D6-435 (2 x 435mhp)	Speed range: 28-30 knots*
Twin Cummins QSB6.7-550 (2 x 550mhp)	Speed range: 30-32 knots*

INTERIOR FINISH

- Furniture in choice of Serotina Cherry or Light Oak with satin or high gloss finish. American Walnut or Rovere Oak available as options
- Avonite worktops and tiled floors in all guest bathrooms
- Avonite worktop and timber-laid floor in galley
- Choice of high quality carpet and upholstery fabric from extensive range
- Curtains, blinds or sunscreens to all windows and portholes

POWER AND DRIVE SYSTEMS

- 4-bladed propellers in nickel aluminium bronze
- Bow thruster (80kgf/176lbf)
- Power-assisted electronic steering system with hydraulic back-up
- Electronic engine and gear shift controls
- Engine room extractor fan
- Dripless shaft seals

ELECTRICAL SYSTEM

24 Volt:

- 2 x heavy-duty batteries for engine starting
- 4 x heavy-duty auxiliary batteries
- Battery link facility with remote control at helm position
- 40 amp battery charger charges both banks of batteries via an automatic switch charging system
- LED lighting throughout
- 220/240 Volt:
- Shore support inlet in cockpit locker with storage for cable
- Polarity check system
- Earth leakage safety trip
- Power points to all areas

FUEL SYSTEM

- Twin fuel tanks (in NS8 marine grade alloy) with interconnection system giving 300 gal/360 US gal/1,363l capacity
- Fuel fillers on port and starboard side decks
- High-capacity fuel filters/water traps
- Remote fuel isolation controls in cockpit locker

WATER SYSTEM

- 93 gal/112 US gal/423l plus 7 gal/8 US gal/32l hot water calorifier, heated by engine and 240v immersion heater
- Water level gauge

FIRE EXTINGUISHERS

- Automatic/manual override fire extinguishers in engine room with warning system at both helm positions
- Hand-operated fire extinguishers (4) in forward stateroom, starboard cabin, galley and lower helm

BILGE PUMPS

- Automatic electric bilge pumps (4)
- High-capacity manual bilge pump with valve system and suction points in same areas

OTHER ITEMS SUPPLIED AS STANDARD

- Ensign staff
- Fenders (4) and warps (4)
- First aid kit
- Tool kit
- Set of manuals
- Quilted bedspreads supplied to all cabins



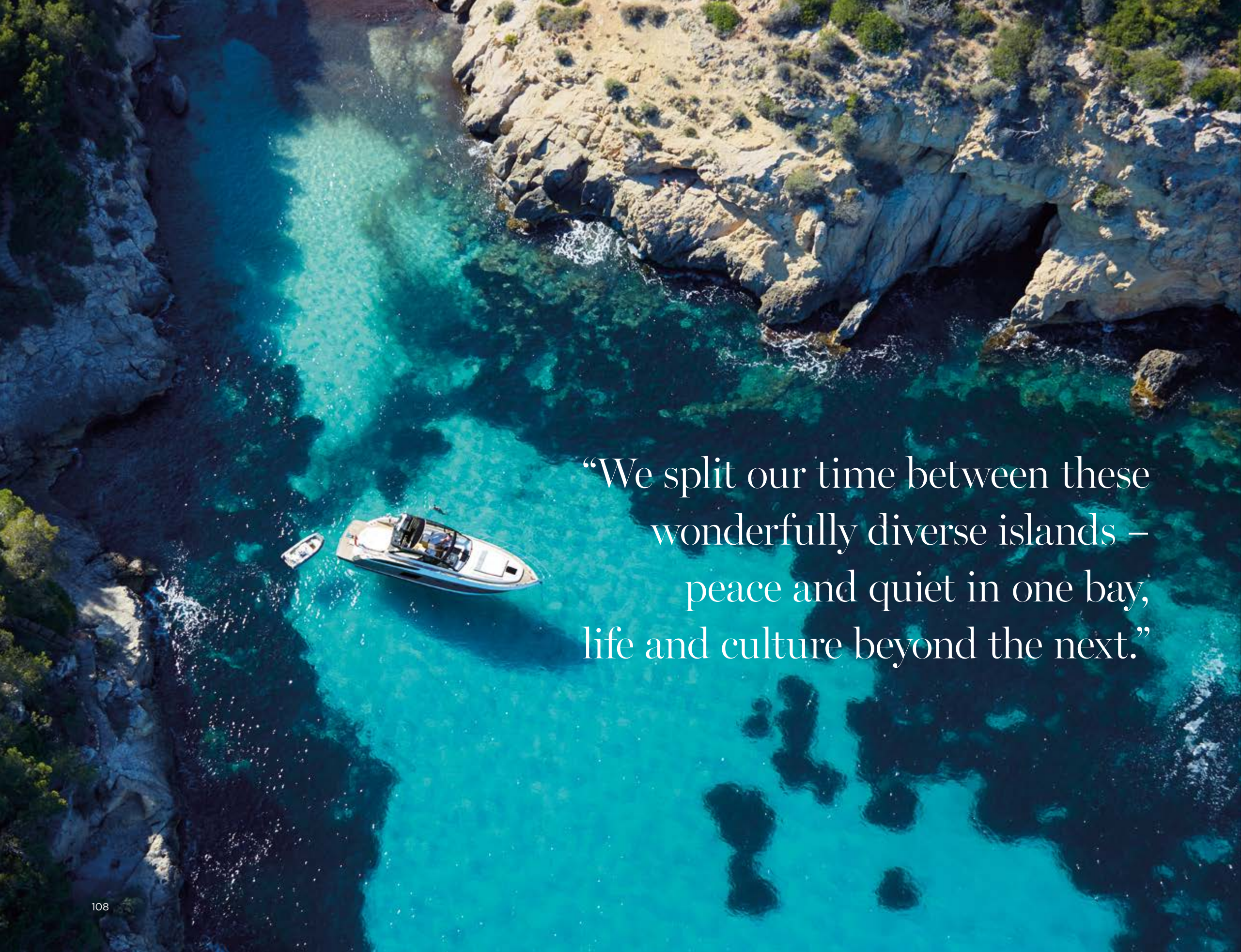
V Class

Sports Yachts

Ibiza, Mallorca.

A summer speeding
between the islands.





“We split our time between these wonderfully diverse islands – peace and quiet in one bay, life and culture beyond the next.”



Our new V48

“She proved to be fast and fun but with that Princess quality that just feels ‘right’. On Ibiza, we cruised for lunch at the Blue Marlin but all of Cala Jondal seemed so alive. That night we berthed in the chic harbour and went for dinner before heading back to the boat and our wonderful cockpit.”



“Mallorca was the surprise.”

Being a larger island there's a lot more to cruise and investigate. We could speed from one place to the next and miss out the crowded resorts. Snorkelling was amazing. Deia is a beautiful village but less well known is a tiny beach to the north – easy to reach by boat, hard to reach just about any other way.

Two things stick in the mind: lunch at Juan y Andrea, a beach restaurant on fabulous Formentera where the water was an extraordinary electric turquoise. Second? Just off Mallorca's south coast was the tiny island of Cabrera. Cruise there and experience it.”



V85S

- Powerful port-to-port performance at speeds approaching 40 knots
- Flying bridge with upper helm or private sundeck layouts
- V-drive shaft propulsion for precision handling and control
- Stern garage for a 14ft tender and jetski with twin launch and recovery systems
- Separate crew quarters for up to four with private mess and engineering access



The V85-S is a serious sports yacht with so many options that it takes personalisation to a new level of sophistication and fun.

Starting at the top, choose between a sun deck with a dining area and sunpads or a three-seat bridge with a helm control station and relaxed U-shape seating. In either case it will be the perfect position to appreciate this yacht's power.

With its muscular presence and over 4,000hp at your command, the V85-S in full flight is one of the most exhilarating experiences imaginable, delivering incredible poise and ability at sea, cutting through the waves at speeds approaching 40 knots.





Choose your interior design style from our carefully selected and extensive options or try something bespoke from Fendi Casa.

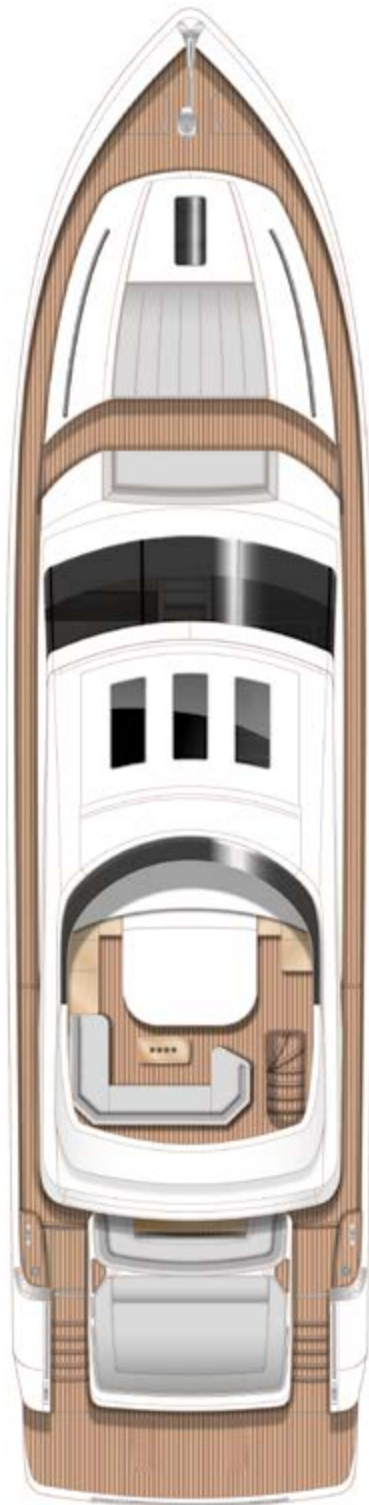
Relax on the sun deck, in the cockpit, or on the foredeck. Dine in the comfort of a climate-controlled interior or retract the 7ft long (2.2m) sunroof and eat under the stars.

Eight guests sleep in two double staterooms and two twin cabins, all with en suite bathrooms. The master stateroom is especially impressive with panoramic hull-side windows, a king-size bed, walk-in wardrobes and a marble en suite with a rainshower.





FLYING BRIDGE



SUNDECK



MAIN DECK



LOWER DECK

V85S

Principal Dimensions	
Length overall (incl. pulpit)	85ft 3in (25.98m)
Length overall (excl. pulpit)	85ft 0in (25.97m)
Beam	20ft 7in (6.57m)
Draft	5ft 11in (1.81m)
Displacement approx.	58,000kg (127,867lbs)*
Fuel capacity	1,320 gal/1,585 US gal/6,000l
Water capacity (incl. calorifier)	265 gal/318 US gal/1,205l

Deck Fittings

- Teak laid transom platform, cockpit deck, stairs to side decks, side decks and sundeck
- Reversible anchor winch with foredeck and helm position controls
- Self-stowing 63kg/139lbs Delta anchor with 100m of chain
- Foredeck seating and sunbathing areas
- Twin electric-powered sternline mooring winches
- Stainless-steel cleats, fairleads and handrails
- Remote control searchlight
- Storage lockers for rope, fenders and foredeck sunbed cushions

Cockpit

- U-shaped seating with teak folding table
- Sunbed aft with garage below
- Twin transom gates leading to bathing platform with electro-hydraulic raise/lower mechanism, foldaway swimming ladder and hot and cold shower
- Electro-hydraulic telescopic passerelle (4.4m)
- Wetbar including sink, electric barbecue, icemaker and refrigerator
- Speakers linked to deck saloon sound system
- Door leading to crew quarters and engine room from side deck
- Lifteraft storage locker
- Locker housing 240v shore support inlet
- Locker with remote fuel cocks

Flying Bridge

- Dual station instrumentation, controls and alarm system including VHF/RT, speed and distance log, echo sounder with alarm and autopilot
- U-shaped seating area with teak table
- Speakers linked to deck saloon sound system
- Refrigerated coolbox
- Chart area

Optional Sundeck

- L-shaped seating and a large sunbed are fitted in place of the helm console and helm and navigation seats

Helm Position

- Twin helm seats with electric adjustment
- Helmsman's door to side deck with electric opening window to port
- Full engine instrumentation including fuel gauges, exhaust temperature, fuel contamination alarms and rudder position indicator

- Navigation system including colour radar, GPS and chartplotter (twin displays), VHF/RT, speed and distance log, echo sounder with alarm, autopilot and high speed magnetic compass
- Controls for bow thruster, windscreen wipers, bilge pump, anchor winch and trim tabs (with indicator)
- Chart table
- 24v and 240v control panel
- Remote control searchlight
- Toughened glass screen (clear for night vision)

Deck Saloon

- Stainless-steel framed sliding doors and electric powered aft window to cockpit
- U-shaped sofa and coffee table with sofa opposite
- Entertainment centre incorporating 46" LED TV on electric raise/lower mechanism and DVD, radio/MP3 system with surround sound system
- Sideboard unit with glass and bottle storage, icemaker and refrigerator
- Dining area
- Electric opening roof

Galley

- 4-zone ceramic hob
- Combination microwave/conventional oven with grill
- Twin stainless-steel sinks with monobloc mixer tap
- Refrigerator and deep freeze
- Dishwasher
- Storage cupboards, drawers and lockers

Accommodation

- All cabins and bathrooms feature opening portholes and air conditioning outlets
- All cabins feature 220/240v power points
- All mattresses pocket sprung
- All bathrooms feature full shower stalls, electric quietflush toilets, extractor fan and 240v shaver points
- A separate washing machine and dryer in lobby area

Owner's Stateroom

- Large double bed with drawers below
- Walk-in wardrobe
- Dressing table with chair
- Occasional table with seats fore and aft
- Built-in safe
- 32" LED TV, DVD, radio/MP3
- Overhead and individual berth lights
- En suite bathroom

Forward Guest Stateroom

- Large double bed with drawers below
- Wardrobes with shelves
- Dressing table with stool
- Deck hatch with integrated skylight and blind
- 28" LED TV, DVD, radio/MP3
- Storage lockers
- Overhead and individual berth lights
- En suite bathroom

Port & Starboard Guest Cabins

- Two single berths with storage below
- Wardrobe with shelf
- Storage lockers
- Overhead and individual berth lights
- En suite bathroom (starboard with day access)

Crew Quarters

- Two crew cabins with one or two berths, hanging locker and storage lockers
- Crew mess with refrigerator, microwave/conventional oven and sink
- Additional deep freeze
- Bathroom with stall shower, electric quietflush toilet and washbasin

Interior Finish

- Furniture in choice of Serotina Cherry or Light Oak with satin or high gloss finish. American Walnut or Rovere Oak available as options
- Granite/marble worktops and floors in all guest bathrooms
- Granite/marble worktops in galley
- Timber-laid galley and helm floors
- Choice of high quality carpet and upholstery fabric from extensive range
- Curtains, blinds or sunscreens to all windows and portholes

Power and Drive Systems

- 5-bladed propellers in nickel aluminium bronze
- Bow thruster (300kgf/661lbf)
- Power-assisted electro-hydraulic steering system with hydraulic back-up
- Electronic engine and gear shift controls
- Dripless shaft seals

Electrical Systems

- 24 Volt:
- 4 x heavy duty batteries for engine starting
- 6 x heavy duty auxiliary batteries

Engine Options - Diesel

- Twin Caterpillar C32 A (2 x 1,925 mhp)
- Speed Range: 31-34 knots†
- Twin MTU 16V 2000 M93 (2 x 2,434 mhp)
- Speed Range: 36-38 knots†
- Twin MTU 16V 2000 M94 (2 x 2,637 mhp)
- Speed Range: 38-40 knots†

- 2 x 60 amp battery charger charges both banks of batteries via an automatic switch charging system
- Remote battery switches with control switch at main panel
- LED lighting throughout
- 220/240 Volt:
- 27kW diesel generator with own starting battery, 13kW back up dual generator and specially silenced exhausts
- Polarity check system
- Earth leakage safety trip
- Power points in all areas

Fuel System

- Twin fuel tanks (in NS8 marine grade alloy) with interconnection system giving 1,320 gal/1,585 US gal 6,000l capacity
- Fuel fillers on port and starboard side decks
- High capacity fuel filters/water traps

Water System

- 220 gal/264 US gal/1,000l plus 45 gal/54 US gal/205l hot water calorifier and heated by engines and 240v immersion heater
- Water level gauge
- Deck filler
- Electric quietflush WC system with 100 gal/121 US gal/457l holding tank

Air Conditioning System

- 108,000Btu chilled water system with outlets in all accommodation areas and incorporating reverse cycle heating with linked windscreen demist system. Suitable for tropical conditions (40°C)

Fire Extinguishers

- Automatic/manual override fire extinguishers in engine room with manual override
- Hand-operated fire extinguishers in owner's stateroom, guest cabins, galley, helm position and crew

Bilge Pumps

- Automatic electric bilge pumps (7)
- High capacity manual bilge pump with valve system and suction points in same areas

Other Items Supplied As Standard

- Set of cutlery, crockery and glasses
- Set of towels (8 large, 8 hand)
- Ensign staff
- Fenders (8) and warps (4)
- First aid kit
- Set of manuals



V78

- Breathtaking performance with speeds approaching 40 knots
- Three en suite cabins and a lower dinette or a fourth twin-bunk cabin
- Extensive deck space with foredeck seating and vast cockpit
- Electric aft bulkhead between saloon and cockpit lowers to create one large entertaining area
- Garage for a 14ft tender or jetski



43 tonnes at almost 40 knots. At full speed the V78 is one of the most impressive sights on the water.



At anchor the V78's main deck saloon is an oasis of calm and relaxation. Deep, low-level sofas complement sumptuous furniture and V-grooved timber flooring. Not only can you retract the vast sunroof but a section of the window between the saloon and cockpit slides down to open up a wonderful one-level entertaining space.

The master stateroom is extremely spacious with a king-size bed, button leather chaise longue and stainless-steel bands inlaid into the Newport linen panelling.



MAIN DECK



LOWER DECK



LOWER DECK OPTION

V78

Principal Dimensions	
Length overall (incl. pulpit)	78ft 2in (23.83m)
Length overall (excl. pulpit)	76ft 4in (23.27m)
Beam	18ft 9in (5.71m)
Draft	5ft 5in (1.65m)
Displacement approx.	43,100kg (95,000lbs)*
Fuel capacity	1,214 gal/1,457 US gal/5,518l
Water capacity (incl. calorifier)	245 gal/294 US gal/1,114l

Deck Fittings

- Teak laid transom platform, cockpit deck, stairs to side decks and side decks
- Reversible anchor winch with foredeck and helm position controls
- Self-stowing 50kg/110lbs Delta anchor with 90m of chain
- Foredeck seating and sunbathing areas
- Twin electric-powered sternline mooring winches
- Stainless-steel cleats, fairleads and handrails
- Remote control searchlight
- Freshwater deck/anchor wash
- Storage lockers for rope, fenders and foredeck sunbed cushions
- LED deck level lighting

Cockpit

- U-shaped seating with teak folding table and additional L-shaped seat with coffee table
- Sunbed aft with garage below
- Twin transom gates leading to bathing platform with electro-hydraulic raise/lower mechanism, foldaway swimming ladder and hot and cold shower
- Electro-hydraulic telescopic passerelle (4.4m)
- Wetbar including sink, electric barbecue and coolbox
- Speakers linked to deck saloon sound system
- Lockable gas strut assisted hatches to engine room and lazarette
- Transom access to crew cabin
- Lifteraft storage locker
- Locker housing 240v shore support inlet
- Locker with remote fuel cocks
- Cockpit cover

Helm Position

- Twin helm seats with electric adjustment
- Helmsman's door to side deck with electric opening window to port
- Full engine instrumentation including fuel gauges, exhaust temperature, fuel contamination alarms and rudder position indicator
- Navigation system including colour radar, GPS and chartplotter, VHF/RT, speed and distance log, echo sounder with alarm, autopilot and high speed magnetic compass
- Controls for bow thruster, windscreen wipers, bilge pump, anchor winch and trim tabs (with indicator)
- Chart table
- 24v and 240v control panel
- Remote control searchlight
- 12v outlet
- Red night lighting
- Toughened glass screen (clear for night vision)

Deck Saloon

- Stainless-steel framed sliding doors and electric powered aft window to cockpit
- U-shaped sofa and coffee table with sofa opposite
- Entertainment centre incorporating 37" LED TV on electric raise/lower mechanism and DVD, radio/MP3 system with surround sound system
- Sideboard unit with glass and bottle storage and refrigerator
- Dining area
- Electric opening roof

Galley

- 4-zone ceramic hob
- Combination microwave/conventional oven with grill
- Twin stainless-steel sinks with monobloc mixer tap
- Full height fridge/freezer
- Dishwasher
- Icemaker
- Storage cupboards, drawers and lockers

Accommodation

- All cabins and bathrooms feature opening portholes and air conditioning outlets
- All cabins feature 220/240v power points
- All mattresses pocket sprung
- All bathrooms feature full shower stalls, electric quietflush toilets, extractor fan and 240v shaver points
- Combination washer/dryer and storage area in lobby area

Owner's Stateroom

- Large double bed with drawers below
- Walk-in wardrobe
- Dressing table with chair
- Chaise longue
- 32" LED TV, DVD, radio/MP3
- Overhead and individual berth lights
- En suite bathroom

Forward Guest Stateroom

- Large double bed with drawers below
- Wardrobe with shelves
- Dressing table with stool
- Deck hatch with integrated skylight and blind
- LED TV, DVD, radio/MP3
- Storage lockers
- Overhead and individual berth lights
- En suite bathroom

Port Guest Cabin

- Two single berths with storage below and powered sliding conversion to double

- Wardrobe with shelf
- Storage lockers
- Overhead and individual berth lights
- En suite bathroom with day access

Starboard Guest Cabin

- Two single berths
- Wardrobe with shelf
- Storage lockers
- Overhead and individual berth lights

Crew Cabin

- Two single berths
- Storage lockers and hanging locker
- Overhead and individual berth lights
- Bathroom with stall shower, electric quietflush toilet and washbasin

Interior Finish

- Furniture in choice of Serotina Cherry or Light Oak with satin or high gloss finish. American Walnut or Rovere Oak available as options
- Granite/marble worktops and floors in all guest bathrooms
- Granite/marble worktops in galley
- Timber-laid galley and helm floors
- Choice of high quality carpet and upholstery fabric from extensive range
- Curtains, blinds or sunscreens to all windows and portholes

Power and Drive Systems

- 5-bladed propellers in nickel aluminium bronze
- Bow thruster (240kgf/529lbf)
- Power-assisted electro-hydraulic steering system with hydraulic back-up
- Electronic engine and gear shift controls
- Dripless shaft seals
- Engine room extractor fan with electronic time delay

Electrical Systems

- 24 Volt:**
 - 4 x heavy duty batteries for engine starting
 - 6 x heavy duty auxiliary batteries
 - 2 x 60 amp battery charger charges both banks of batteries via an automatic switch charging system
 - Remote battery switches with control switch at main panel
 - LED lighting throughout
- 220/240 Volt:**
 - 22.5kW diesel generator with own starting battery and specially silenced exhaust
 - Polarity check system

Engine Options - Diesel

Twin Caterpillar C32 A (2 x 1,723 mhp)

Speed Range: 35-37 knots†

Twin MTU 12V 2000 M93 (2 x 1,822 mhp)

Speed Range: 36-39 knots†

Twin Caterpillar C32 A (2 x 1,825 mhp)

Speed Range: 36-39 knots†

- Earth leakage safety trip
- Power points in all areas

Fuel System

- Twin fuel tanks (in NS8 marine grade alloy) with interconnection system giving 1,214 gal/1,457 US gal 5,518l capacity
- Fuel fillers on port and starboard side decks
- High capacity fuel filters/water traps

Water System

- 150 gal/180 US gal/682l plus 22 gal/26 US gal/100l hot water calorifier and heated by engines and 240v immersion heater
- Water level gauge
- Deck filler
- Electric quietflush WC system with 60 gal/72 US gal/273l holding tank

Air Conditioning System

- 109,000Btu chilled water system with outlets in all accommodation areas and incorporating reverse cycle heating with linked windscreen demist system. Suitable for tropical conditions (40°C)

Fire Extinguishers

- Automatic/manual override fire extinguishers in engine room with manual override
- Hand-operated fire extinguishers (6) in owner's stateroom, guest cabins, galley, helm position and crew

Bilge Pumps

- Automatic electric bilge pumps (6)
- High capacity manual bilge pump with valve system and suction points in same areas

Other Items Supplied as Standard

- Set of cutlery, crockery and glasses
- Set of towels (6 large, 6 hand)
- Ensign staff
- Fenders (6) and warps (4)
- First aid kit
- Set of manuals

V72

- Three beautifully appointed en suite cabins
- Large shaded cockpit with a drop glass bulkhead and sliding doors to the saloon
- Tender garage and hydraulic bathing platform for 12ft tender or jetski
- Foredeck seating – the perfect private retreat
- Advanced deep-V hull design with speeds of up to 38 knots
- En suite crew quarters with independent transom access



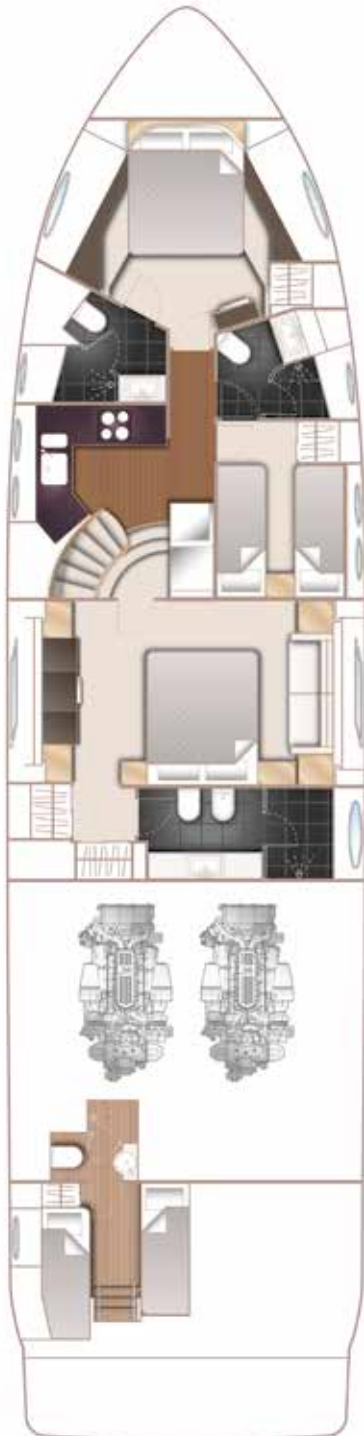




In the V72's deck saloon, you might choose to relax into a climate-controlled world of crafted cabinetry and leather upholstery. Or open the sunroof at the touch of a button and let in miles of sky and seascape, the glass cockpit doors cleverly folding and sliding away for even more atmosphere. Entertaining space includes deep broad sofas and a circular dining area by the helm, perfectly placed as companion seating when underway.



MAIN DECK



LOWER DECK

V72

Principal Dimensions	
Length overall (incl. pulpit)	74ft 0in (22.55m)
Length overall (excl. pulpit)	72ft 3in (22.03m)
Beam	17ft 8in (5.38m)
Draft	4ft 10in (1.48m)
Displacement approx.	37,200kg (82,000lbs)*
Fuel capacity	966 gal/1,160 US gal/4,390l
Water capacity (incl. calorifier)	172 gal/206 US gal/782l

- DECK FITTINGS**
- Teak-laid transom platform, cockpit deck and stairs to side decks
 - Reversible electric anchor winch with foredeck and helm position controls
 - Self-stowing 40kg/88lbs Delta anchor with 40m of chain
 - Foredeck seating and sunbathing area
 - Twin electric-powered sternline mooring winches
 - Stainless-steel cleats, fairleads and handrails
 - Remote control searchlight
 - Freshwater deck/anchor wash
 - Storage lockers for rope, fenders and foredeck sunbed cushions
 - LED deck level lighting

- COCKPIT**
- U-shaped seating with teak folding table
 - Sunbed aft with garage below
 - Transom gate leading to bathing platform with electro-hydraulic raise/lower mechanism, foldaway swimming ladder and hot and cold shower
 - Electro-hydraulic telescopic passerelle (3.8m)
 - Wetbar including sink, electric barbecue and coolbox
 - Speakers linked to deck saloon sound system
 - Lockable gas strut assisted hatches to engine room and lazarette
 - Transom access to crew cabin
 - Lifteraft storage locker
 - Locker housing 240v shore support inlet
 - Locker with remote fuel cocks
 - Cockpit cover

- HELM POSITION**
- Twin helm seats with electric adjustment
 - Helmsman's door to side deck with electric opening window to port
 - Full engine instrumentation including fuel gauges, exhaust temperature, fuel contamination alarms and rudder position indicator
 - Navigation system including colour radar, GPS and chartplotter, VHF/RT, speed and distance log, echo sounder with alarm, autopilot and high speed magnetic compass
 - Controls for bow thruster, windscreen wipers, bilge pump, anchor winch and trim tabs (with indicator)
 - Chart table
 - 24v and 240v control panel
 - Remote control searchlight
 - 12v outlet
 - Red night lighting
 - Toughened glass screen (clear for night vision)

- DECK SALOON**
- Stainless-steel framed sliding doors and electric powered aft window to cockpit
 - U-shaped sofa and coffee table
 - Entertainment centre incorporating 46" LED TV on electric raise/lower mechanism and DVD, radio/MP3 system with surround sound system
 - Sideboard unit with glass and bottle storage, refrigerator and icemaker
 - Dining area
 - Electric opening roof

- GALLEY**
- 4-zone ceramic hob
 - Combination microwave/conventional oven with grill
 - Twin stainless-steel sinks with monobloc mixer tap
 - Full height fridge/freezer
 - Dishwasher
 - Storage cupboards, drawers and lockers

- ACCOMMODATION**
- All cabins and bathrooms feature opening portholes and air conditioning outlets
 - All cabins feature 220/240v power points
 - All mattresses pocket sprung (excluding crew)
 - All bathrooms feature full shower stalls, electric quietflush toilets, extractor fan and 240v shaver points
 - Combination washer/dryer and storage area in lobby area

- OWNER'S STATEROOM**
- Large double bed with drawers below
 - Dressing area with wardrobes with hanging and drawer storage
 - Dressing table with chair
 - Sofa
 - 40" LED TV, DVD, radio/MP3
 - Overhead and individual berth lights
 - En suite bathroom

- FORWARD GUEST CABIN**
- Large double bed with drawers below
 - Wardrobe with shelves
 - Dressing table with stool
 - Deck hatch with integrated skylight and blind
 - Stereo radio/MP3
 - Storage lockers
 - Overhead and individual berth lights
 - En suite bathroom

- STARBOARD GUEST CABIN**
- Two single berths with drawers below
 - Wardrobe with shelf
 - Storage lockers
 - Overhead and individual berth lights
 - En suite bathroom with day access

- CREW CABIN**
- Two single berths
 - Storage lockers and hanging locker
 - Overhead and individual berth lights
 - Bathroom with stall shower, electric quietflush toilet and washbasin

- INTERIOR FINISH**
- Furniture in choice of Serotina Cherry or Light Oak with satin or high gloss finish. American Walnut or Rovere Oak available as options
 - Avonite worktops and tiled floors in all guest bathrooms
 - Granite/marble worktops in galley
 - Timber-laid galley and helm floors
 - Choice of high quality carpet and upholstery fabric from extensive range
 - Curtains, blinds or sunscreens to all windows and portholes

- POWER AND DRIVE SYSTEMS**
- 5-bladed propellers in nickel aluminium bronze
 - Bow thruster (170kgf/375lbf)
 - Power-assisted electro-hydraulic steering system with hydraulic back-up
 - Electronic engine and gear shift controls
 - Dripless shaft seals
 - Engine room extractor fan with electronic time delay

- ELECTRICAL SYSTEMS**
- 24 Volt:**
- 4 x heavy duty batteries for engine starting
 - 6 x heavy duty auxiliary batteries
 - 2 x 60 amp battery charger charges both banks of batteries via an automatic switch charging system
 - Remote battery switches with control switch at main panel
 - LED lighting throughout
- 220/240 Volt:**
- 22.5kW diesel generator with own starting battery and specially silenced exhaust
 - Polarity check system
 - Earth leakage safety trip
 - Power points to all areas

- ENGINE OPTIONS - DIESEL**
- Twin Caterpillar C32 A (2 x 1,622mhp)
- Speed range: 36-38 knots
- Twin MTU 10V 2000 M94 (2 x 1,624mhp)
- Speed range: 36-38 knots
- Twin Caterpillar C32 A (2 x 1,723mhp)
- Speed range: 37-39 knots*

- FUEL SYSTEM**
- Twin fuel tanks (in NS8 marine grade alloy) with interconnection system giving 966 gal/1,160 US gal/4,390l capacity
 - Fuel fillers on port and starboard side decks
 - High capacity fuel filters/water traps

- WATER SYSTEM**
- 150 gal/180 US gal/682l plus 22 gal/26 US gal/100l hot water calorifier and heated by engines and 240v immersion heater
 - Water level gauge
 - Deck filler
 - Electric quietflush WC system with 60 gal/72 US gal/273l holding tank

- AIRCONDITIONING**
- 108,000Btu chilled water system with outlets in all accommodation areas and incorporating reverse cycle heating with linked windscreen demist system. Suitable for tropical conditions (40°C)

- FIRE EXTINGUISHERS**
- Automatic/manual override fire extinguishers in engine room with manual override
 - Hand-operated fire extinguishers (5) in owner's stateroom, guest cabins, galley, helm position and crew

- BILGE SYSTEMS**
- Automatic electric bilge pumps (6)
 - High capacity manual bilge pump with valve system and bilge suction points in same area

- OTHER ITEMS SUPPLIED AS STANDARD**
- Set of cutlery, crockery and glasses
 - Set of towels (6 large, 6 hand)
 - Ensign staff
 - Fenders (8) and warps (4)
 - First aid kit
 - Set of manuals

V62S

- Exceptional handling and agility with speeds of up to 37 knots
- Superior sound deadening for an exceptionally quiet ride
- Single deck entertaining space from the helm to the transom
- Lower deck with three cabins, two en suite, and a lower saloon
- Stern garage for 10ft tender or jetski plus hydraulic platform





Sleek, sophisticated and powerful, the V62-S is the epitome of sports yacht style.



Three cabins are beautifully furnished with stainless-steel inlays on Newport linen panelling. The full-beam stateroom has windows almost the length of the entire cabin and an opulent en suite. The lower saloon offers a wonderfully private retreat or useful children's TV room.





MAIN DECK



LOWER DECK

V62-S

Principal Dimensions	
Length overall (incl. pulpit)	63ft 6in (19.35m)
Length overall (excl. pulpit)	62ft 8in (19.13m)
Beam	16ft 5in (4.99m)
Draft	4ft 6in (1.37m)
Displacement approx.	27,200kg (60,000lbs)*
Fuel capacity	750 gal/900 US gal/3,409l
Water capacity (incl. calorifier)	110 gal/132 US gal/500l

Deck Fittings

- Teak-laid transom platform, cockpit deck and stairs to side decks
- Reversible electric anchor winch with foredeck and helm position controls
- Self-stowing 40kg/88lbs Delta anchor with 40m of chain
- Stainless-steel cleats, fairleads and handrails
- Remote control searchlight
- Freshwater deck/anchor wash
- Stern docking lights
- Foredeck rope locker

Cockpit

- U-shaped seating with teak table
- Sunbed aft with garage below
- Transom gate leading to bathing platform with electro-hydraulic raise/lower mechanism, foldaway swimming ladder and hot and cold shower
- Wetbar including sink with electric barbecue and coolbox
- Speakers linked to deck saloon sound system
- Lockable gas strut assisted hatches to engine room and lazarette
- Liferaft and fender storage lockers
- Locker housing 240v shore support inlet
- Locker with remote fuel cocks
- Cockpit cover
- Optional electro-hydraulic telescopic passerelle (3.5m)

Helm Position

- Twin adjustable helm seats
- Electric opening window
- Full engine instrumentation including fuel gauges, engine controls and rudder position indicator
- Navigation system including colour radar, GPS and chartplotter, VHF/RT, speed and distance log, echo sounder with alarm, autopilot and high speed magnetic compass
- Controls for bow thruster, windscreen wipers, bilge pump, anchor winch and trim tabs (with indicator)
- Chart table
- Remote control searchlight
- 12v outlet
- Red night lighting

Deck Saloon

- Triple opening stainless-steel framed sliding doors to cockpit
- U-shaped sofa with coffee table
- Sideboard unit with glass and bottle storage, refrigerator and icemaker
- Electric opening roof

- Stereo radio/MP3 with saloon and cockpit speakers
- Opening window to port

Galley

- 4-zone ceramic hob
- Combination microwave/conventional oven with grill
- Twin stainless-steel sinks with monobloc mixer tap
- Full height fridge/freezer
- Dishwasher
- Storage cupboards, drawers and lockers
- Optional washer/dryer and storage area below stairway

Lower Saloon

- L-shaped sofa with dining table and two stools
- Sideboard unit
- Storage lockers
- 32" LED TV, DVD, radio/MP3 with surround system
- 24v and 240v control panel

Accommodation

- All cabins and bathrooms feature opening portholes
- All cabins feature 220/240v power points
- All mattresses pocket sprung (excluding crew)
- All bathrooms feature full shower stalls, electric quietflush toilets, extractor fan and 240v shaver points

Owner's Stateroom

- Large double bed with drawers below
- Wardrobe with shelves
- Dressing table
- Sofa
- Overhead and individual berth lights
- Stereo radio/MP3
- En suite bathroom

Forward Guest Cabin

- Large double bed with drawers below
- Wardrobe with shelves
- Vanity unit
- Storage lockers
- Deck hatch with integrated skylight and blind
- Overhead and individual berth lights
- En suite bathroom (with day access)

Starboard Guest Cabin

- Two single berths with drawers below
- Wardrobe with shelf
- Storage lockers
- Overhead and individual berth lights

Optional Aft Cabin

- Single berth

- Storage lockers and hanging locker
- Overhead and individual berth lights
- Electric quietflush toilet and washbasin

Interior Finish

- Furniture in choice of Serotina Cherry or Light Oak with satin or high gloss finish. American Walnut or Rovere Oak available as options
- Avonite worktops and tiled floors in all bathrooms
- Avonite worktop and timber-laid floor in galley
- Timber-laid saloon floor
- Choice of high quality carpet and upholstery fabric from extensive range
- Curtains, blinds or sunscreens to all windows and portholes

Power and Drive Systems

- 5-bladed propellers in nickel aluminium bronze
- Bow thruster (170kgf/375lbf)
- Power-assisted electro-hydraulic steering system with hydraulic back-up
- Electronic engine and gear shift controls
- Dripless shaft seals
- Engine room extractor fan with electronic time delay

Electrical Systems

24 Volt:

- 4 x heavy duty batteries for engine starting
- 4 x heavy duty auxiliary batteries
- 60 amp battery charger charges both banks of batteries via an automatic switch charging system
- LED lighting throughout

220/240 Volt:

- 9.5kW diesel generator with own starting battery and specially silenced exhaust
- Polarity check system
- Earth leakage safety trip
- Power points to all areas

Fuel System

- Twin fuel tanks (in NS8 marine grade alloy) with interconnection system giving 750 gal/900 US gal/3,409l capacity
- Fuel fillers on port and starboard side decks
- High capacity fuel filters/water traps

Water System

- 95 gal/114 US gal/431L plus 16 gal/19 US gal/72l hot water calorifier and heated by engines and 240v immersion heater
- Water level gauge
- Deck filler

Engine Options - Diesel

- Twin Caterpillar C18 A (2 x 1,015mhp)
- Speed range: 32-35 knots*
- Twin Caterpillar C18 A (2 x 1,150mhp)
- Speed range: 35-37 knots*
- Twin MTU 8V 2000 M94 (2 x 1,268mhp)
- Speed range: 36-38 knots*

Fire Extinguishers

- Automatic/manual override fire extinguishers in engine room with manual override
- Hand-operated fire extinguishers (5) in owner's stateroom, guest cabins, galley, deck saloon and lower saloon

Bilge Systems

- Automatic electric bilge pumps (6)
- High capacity manual bilge pump with valve system and bilge suction points in same area

Other Items Supplied as Standard

- Set of cutlery, crockery and glasses
- Set of towels (6 large, 6 hand)
- Ensign staff
- Fenders (6) and warps (4)
- First aid kit
- Tool kit
- Set of manuals
- Quilted bedspreads in all cabins

V57

- Stunning low-profile looks
- Three spacious en suite cabins with optional crew cabin
- Optional lower saloon in place of third en suite
- Garage for 10ft tender or jetski and hydraulic bathing platform
- Incredibly fuel efficient with advanced hull geometry





Speed, space and handling – the V57 defines V Class style.



The V57 has sleek, sharp style and accelerates with breathtaking power. Pioneering Princess naval architecture enables the boat to rise quickly onto the plane and stay there with the minimum of effort, resulting in remarkable gains in fuel efficiency.

Handling is incredibly responsive making the boat so much fun to drive at speed. This is a super sports yacht that corners with extraordinary precision.







MAIN DECK



LOWER DECK



LOWER DECK OPTION

V57

Principal Dimensions	
Length overall (incl. pulpit)	58ft 8in (17.88m)
Length overall (excl. pulpit)	57ft 6in (17.54m)
Beam	15ft 3in (4.65m)
Draft	4ft 2in (1.27m)
Displacement approx.	20,500kg (45,200lbs)*
Fuel capacity	484 gal/581 US gal/2,200l
Water capacity (incl. calorifier)	110 gal/132 US gal/500l

DECK FITTINGS

- Teak-laid transom platform, cockpit deck and stairs to side decks
- Reversible electric anchor winch with foredeck and helm position controls
- Self-stowing 25kg/55lbs Delta anchor with 40m of chain
- Stainless-steel cleats, fairleads and handrails
- Foredeck rope locker
- Remote control searchlight

COCKPIT

- U-shaped seating with teak table
- Sunbed aft with garage below
- Transom gate leading to bathing platform with electro-hydraulic raise/lower mechanism, foldaway swimming ladder and hot and cold shower
- Wetbar including sink with electric barbecue and coolbox
- Speakers linked to deck saloon sound system
- Lockable gas strut assisted hatch to engine room
- Liferaft storage locker
- Locker housing 240v shore support inlet
- Locker with remote fuel cocks
- Cockpit cover

HELM POSITION

- Twin helm seats
- Electric opening window
- Full engine instrumentation including fuel gauges, engine controls and rudder position indicator
- Navigation system including colour radar, GPS and chartplotter, VHF/RT, speed and distance log, echo sounder with alarm, autopilot and high speed magnetic compass
- Controls for windscreen wipers, bilge pump, anchor winch and trim tabs (with indicator)
- Chart table
- Remote control searchlight

SALOON

- Triple opening stainless-steel framed sliding doors to cockpit
- U-shaped sofa and dining table
- Entertainment centre incorporating 46" LED TV on electric raise/lower mechanism and DVD, radio/MP3 system with surround sound system
- Sideboard unit with glass and bottle storage and refrigerator
- Electric opening roof
- 46" LED TV DVD, radio/MP3 with saloon and cockpit speakers
- Opening window to port

GALLEY

- 3-zone ceramic hob
- Combination microwave/conventional oven with grill
- Stainless-steel sink with monobloc mixer tap
- Refrigerator with freezer compartment
- Waste bin
- Storage cupboards, drawers and lockers
- Under-floor storage

ACCOMMODATION

- All cabins and bathrooms feature opening portholes
- All cabins feature 220/240v power points
- All mattresses pocket sprung (excluding crew)
- All bathrooms feature full shower stalls, electric quietflush toilets, extractor fan and 240v shaver points

OWNER'S STATEROOM

- Large double bed with drawers below
- Wardrobe with shelves
- Sofa
- Dressing table
- Stereo radio/MP3
- Storage lockers and drawers
- Overhead and individual berth lights
- En suite bathroom

FORWARD GUEST CABIN

- Large double bed with drawers below (option of scissor berths)
- Wardrobe
- Storage lockers
- Deck hatch with integrated skylight and blind
- Overhead and individual berth lights
- En suite bathroom (with day access when lower saloon is specified)

STARBOARD GUEST CABIN

- Two single berths with drawers below
- Wardrobe with shelf
- Storage lockers
- Overhead and individual berth lights
- En suite bathroom

OPTIONAL LOWER SALOON

- The starboard bathroom is replaced with an L-shaped seating/dining area and the starboard cabin wardrobe is relocated below the companionway stairs.

OPTIONAL AFT CABIN

- Single berth with drawers below
- Wardrobe with shelf
- Storage lockers

- Overhead and individual berth light
- Electric quietflush toilet and washbasin

INTERIOR FINISH

- Furniture in choice of Serotina Cherry or Light Oak with satin or high gloss finish. American Walnut or Rovere Oak available as options
- Avonite worktops and tiled floors in all guest bathrooms
- Avonite worktop and timber-laid floor in galley
- Timber-laid saloon floor
- Choice of high quality carpet and upholstery fabric from extensive range
- Curtains, blinds or sunscreens to all windows and portholes

POWER AND DRIVE SYSTEMS

- 4-bladed propellers in nickel aluminium bronze
- Bow thruster (120kgf/265lbf)
- Power-assisted electro-hydraulic steering system with hydraulic back-up
- Electronic engine and gear shift controls
- Dripless shaft seals
- Engine room extractor fan with electronic time delay

ELECTRICAL SYSTEMS

24 Volt:

- 4 x heavy-duty batteries for engine starting
- 4 x heavy-duty auxiliary batteries
- 60 amp battery charger charging both banks of batteries via automatic switch charging system
- LED lighting throughout

220/240 Volt:

- 7kW diesel generator in own sound shield with water cooled specially silenced exhaust
- Polarity check system
- Earth leakage safety trip
- Power points to all areas

FUEL SYSTEM

- Twin fuel tanks (in NS8 marine grade alloy) with interconnection system giving 484 gal/581 US gal/2,200l capacity
- Fuel fillers on port and starboard side decks
- High capacity fuel filters/water traps

WATER SYSTEM

- 110 gal/132 US gal/500l plus 16 gal/19 US gal/72l hot water calorifier and heated by engine and 240v immersion heater
- Water level gauge
- Deck filler

ENGINE OPTIONS - DIESEL

Twin Volvo D13-800 (2 x 800mhp)

Speed range: 34-36 knots*

Twin Volvo D13-900 (2 x 900mhp)

Speed range: 36-38 knots*

FIRE EXTINGUISHERS

- Automatic/manual override fire extinguishers in engine room with manual override
- Hand-operated fire extinguishers (5) in owner's stateroom, guest cabins, galley and deck saloon

BILGE PUMPS

- Automatic electric bilge pumps (5)
- High-capacity manual bilge pump with valve system and suction points in same areas

OTHER ITEMS SUPPLIED AS STANDARD

- Ensign staff
- Fenders (6) and warps (4)
- First aid kit
- Tool kit
- Set of manuals
- Quilted bedspreads in all cabins

V52

- Multi-award-winning design
- Full-beam master stateroom with incredible headroom, sofa and hull-side windows
- Two or three-cabin layout options
- Hydraulic bathing platform included as standard
- Aft lazarette can be optionally specified as a single berth crew cabin





The V52 has been specifically designed to combine streamlined style with intelligent interior innovation.

With a deep-V hull, performance and space work together to create a boat with agile handling up to a 36 knot top speed and the advantages of a large cockpit and a fully enclosed saloon.





Open the stainless-steel cockpit doors and combine the saloon and cockpit into one single entertaining area.

Lower deck options allow you to choose between two en suite cabins and a lower saloon, or three cabins.





MAIN DECK



LOWER DECK



LOWER DECK OPTION

V52

Principal Dimensions	
Length overall (incl. pulpit)	54ft 6in (16.61m)
Length overall (excl. pulpit)	53ft 2in (16.2m)
Beam	14ft 7in (4.45m)
Draft	3ft 9in (1.14m)
Displacement approx.	19,000kg (41,900lbs)*
Fuel capacity	440 gal/528 US gal/2,000l
Water capacity (incl. calorifier)	104 gal/125 US gal/470l

Engine Options - Diesel
Twin Volvo D11-670 (2 x 670mhp)
Speed range: 33-35 knots*
Twin Caterpillar C12 (2 x 715mhp)
Speed range: 35-37 knots*
Twin Volvo D11-725 (2 x 725mhp)
Speed range: 35-37 knots*

- DECK FITTINGS**
- Teak-laid transom platform, cockpit deck and stairs to side decks
 - Reversible electric anchor winch with foredeck and helm position controls
 - Self-stowing 20kg/44lbs Delta anchor with 40m of chain
 - Stainless-steel cleats, fairleads and handrails
 - Remote control searchlight

- COCKPIT**
- U-shaped seating with folding teak table (converts to sunbed)
 - Transom hatch to stern lazarette/optional crew cabin
 - Transom gate leading to bathing platform with electro-hydraulic raise/lower mechanism, foldaway swimming ladder and hot and cold shower
 - Wetbar including sink, coolbox, storage and optional barbecue
 - Lockable gas strut assisted hatch to engine room
 - Lifteraft storage locker
 - Locker housing 240v shore support inlet
 - Locker with remote fuel cocks
 - Cockpit cover

- HELM POSITION**
- Twin helm seats with bolster
 - Electric opening window
 - Full engine instrumentation including fuel gauges, engine controls and rudder position indicator
 - Navigation system including VHF/RT, speed and distance log, echo sounder with alarm, autopilot and high speed magnetic compass
 - Controls for windscreen wipers, bilge pump, anchor winch and trim tabs (with indicator)
 - Chart table
 - Remote control searchlight

- DECK SALOON**
- Triple opening stainless-steel framed sliding doors to cockpit
 - U-shaped sofa and dining table
 - Sideboard unit with glass and bottle storage
 - Electric opening roof
 - Stereo radio/MP3 with saloon and cockpit speakers
 - Opening window to port

- LOWER SALOON**
- Furniture in choice of Serotina Cherry or Light Oak with satin or high gloss finish. American Walnut or Rovere Oak available as options
 - 40" LED TV DVD, radio/MP3
 - 24v and 220/240v electrical control panels
 - Storage lockers
 - Optional third cabin with two single berths available in place of lower saloon

- GALLEY**
- 3-zone ceramic hob
 - Combination microwave/conventional oven with grill
 - Stainless-steel sink with monobloc mixer tap
 - Refrigerator with freezer compartment
 - Waste bin
 - Storage cupboards, drawers and lockers

- ACCOMMODATION**
- All cabins and bathrooms feature opening portholes
 - All cabins feature 220/240v power points
 - All mattresses pocket sprung
 - All bathrooms feature full shower stalls, electric quietflush toilets, extractor fan and 240v shaver points

- OWNER'S STATEROOM**
- Large double bed with drawers below
 - Wardrobe with shelves
 - Sofa
 - Storage lockers and drawers
 - Overhead and individual berth lights
 - En suite bathroom

- FORWARD GUEST CABIN**
- Two single scissor berths
 - Wardrobe
 - Storage lockers
 - Deck hatch with integrated skylight and blind
 - Overhead and individual berth lights
 - En suite bathroom with day access

- OPTIONAL AFT CABIN (in place of lazarette)**
- Single berth with drawers below
 - Storage lockers
 - Overhead and individual berth light
 - Electric quietflush toilet and washbasin

- INTERIOR FINISH**
- Furniture in choice of Serotina Cherry or Light Oak with satin or high gloss finish. American Walnut or Rovere Oak available as options
 - Avonite worktops and tiled floors in all guest bathrooms
 - Avonite worktop and timber-laid floor in galley
 - Timber-laid saloon floor
 - Choice of high quality carpet and upholstery fabric from extensive range
 - Curtains, blinds or sunscreens to all windows and portholes

- POWER AND DRIVE SYSTEMS**
- 4-bladed propellers in nickel aluminium bronze
 - Bow thruster (120kgf/265lbf)
 - Power-assisted electro-hydraulic steering system with hydraulic back-up
 - Electronic engine and gear shift controls
 - Dripless shaft seals
 - Engine room extractor fan with electronic time delay

- ELECTRICAL SYSTEMS**
- 24 Volt:**
- 4 x heavy-duty batteries for engine starting
 - 4 x heavy-duty auxiliary batteries
 - 60 amp battery charger charging both banks of batteries via automatic switch charging system
 - LED lighting throughout
- 220/240 Volts:**
- 7kW diesel generator in own sound shield with water cooled specially silenced exhaust
 - Shore support inlet in cockpit locker with storage for cable
 - Polarity check system
 - Earth leakage safety trip
 - Power points to all areas

- FUEL SYSTEM**
- Twin fuel tanks (in NS8 marine grade alloy) with interconnection system giving 440 gal/528 US gal/2,000l capacity
 - Fuel fillers on port and starboard side decks
 - High capacity fuel filters/water traps

- WATER SYSTEM**
- 93 gal/112 US gal/420l plus 11 gal/13 US gal/50l hot water calorifier and heated by engine and 240v immersion heater
 - Water level gauge
 - Deck filler

- FIRE EXTINGUISHERS**
- Automatic/manual override fire extinguishers in engine room with manual override
 - Hand-operated fire extinguishers (4) in owner's stateroom, guest cabin, galley and deck saloon

- BILGE PUMPS**
- Automatic electric bilge pumps (3)
 - High-capacity manual bilge pump with valve system and suction points in same areas

- OTHER ITEMS SUPPLIED AS STANDARD**
- Ensign staff
 - Fenders (6) and warps (4)
 - First aid kit
 - Tool kit
 - Set of manuals
 - Quilted bedspreads in all cabins

V48

- A choice of V48 Open or V48 Deck Saloon
- Two en suite cabins and lower saloon with the option of a third cabin
- Resin-infused deep-V hull for increased volume
- Volvo IPS propulsion for optimised space, handling and efficiency
- V48 Open includes stern garage for 10ft (3.2m) tender





It's an open and shut case.

With the V48 you can choose the Open, Mediterranean-style design with a full-length cockpit and sunroof or the Deck Saloon model for an elegant, enclosed and climate-controlled interior. You can have a lower deck saloon for added entertaining space or a third cabin if you like to cruise with company.





The styling is your choice too. Rovere oak, Serotina cherry, Light oak or American walnut. Hand stitched leathers and the finest materials.

The V48 is fitted with the Volvo IPS drive system, renowned for its fuel efficiency, while joystick control delivers superior handling and increased manoeuvrability when docking.

Open or Deck Saloon, the V48 has built a worthy reputation as a class leader.



MAIN DECK



MAIN DECK - OPEN



LOWER DECK



LOWER DECK - OPEN

V48

PRINCIPAL DIMENSIONS	
V48	
Length overall (incl. pulpit)	50ft 10in (15.49m)
Length overall (excl. pulpit)	49ft 11in (15.21m)
Length of hull	46ft 2in (14.07m)
Beam	13ft 6in (4.11m)
Draft	3ft 9in (1.14m)
Displacement approx.	14,200kg (31,300lbs)*
Fuel capacity	291 gal/350 US gal/1,325l
Water capacity (incl. calorifier)	80 gal/96 US gal/364l

V48 Open	
Length overall (incl. pulpit)	51ft 10in (15.8m)
Length overall (excl. pulpit)	50ft 11in (15.52m)
Length of hull	46ft 2in (14.07m)
Beam	13ft 6in (4.11m)
Draft	3ft 9in (1.14m)
Displacement approx.	14,300kg (31,500lbs)*
Fuel capacity	291 gal/350 US gal/1,325l
Water capacity (incl. calorifier)	80 gal/96 US gal/364l

ENGINE OPTIONS - DIESEL	
Twin Volvo IPS 600 (2 x 435mhp)	Speed range: 32-34 knots†

- DECK FITTINGS**
- Teak-laid transom platform, cockpit deck and stairs to side decks
 - Reversible electric anchor winch with foredeck and helm position controls
 - Self-stowing 20kg/44lbs Delta anchor with 40m of chain
 - Stainless-steel cleats, fairleads and handrails
 - Remote control searchlight

- COCKPIT**
- Seating with folding teak table
 - Lockable gas strut assisted hatch to engine room
 - Transom gate leading to bathing platform with optional electro-hydraulic raise/lower mechanism, foldaway swimming ladder and hot and cold shower
 - Lifteraft storage locker
 - Locker housing 240v shore support inlet
 - Locker with remote fuel cocks
 - Cockpit cover
 - Transom hatch to stern lazarette
 - Storage locker for 2 gas bottles
 - The V48 Open also incorporates: electro-hydraulic bathing platform as standard, aft sunpad and tender garage (up to 3.5m), large seating area aft with fixed teak table, electrically operated canvas sun roof, wetbar including sink, coolbox and storage with optional barbecue, L-shaped seating opposite the helm and sliding door to lower accommodation

- HELM POSITION**
- Twin helm seat with bolster
 - Electric opening helmsman's window
 - Full engine instrumentation including fuel gauges, joystick control and rudder position indicator
 - Navigation system including VHF/RT, speed and distance log, echo sounder with alarm and high speed magnetic compass
 - Controls for windscreen wipers, bilge pump, anchor winch and trim tabs (with indicator)
 - Chart table
 - Remote control searchlight

- DECK SALOON**
- Triple opening stainless-steel framed sliding doors to cockpit
 - U-shaped sofa and dining table
 - Sideboard unit with glass and bottle storage and refrigerator
 - Electric opening roof
 - Stereo radio/MP3 with saloon and cockpit speakers
 - Timber-laid floor

- LOWER SALOON**
- Seating area with table (with option of conversion to double berth or third cabin)
 - 24v and 220/240v electrical control panels
 - Storage lockers
 - Stereo radio/MP3 with saloon and cockpit speakers (Open only)

- GALLEY**
- 3-zone gas hob with flame-failure device (3-zone ceramic hob standard on Open)
 - Remote solenoid switch for gas system
 - Combination microwave/conventional oven with grill
 - Stainless-steel sink with monobloc mixer tap
 - Full height fridge/freezer
 - Waste bin
 - Storage cupboards, drawers and lockers

- ACCOMMODATION**
- All cabins and bathrooms feature opening portholes
 - All cabins feature 220/240v power points
 - All mattresses pocket sprung
 - All bathrooms feature full shower stalls, electric quietflush toilets, extractor fan and 240v shaver points

- OWNER'S STATEROOM**
- Large double bed with drawers below
 - Wardrobe with shelves
 - Sofa
 - Storage lockers and drawers
 - Overhead and individual berth lights
 - En suite bathroom

- FORWARD GUEST CABIN**
- Large double bed with drawers below (option of scissor berths)
 - Wardrobe with shelves
 - Storage lockers
 - Deck hatch with integrated skylight and blind
 - Overhead and individual berth lights
 - En suite bathroom with day access

- INTERIOR FINISH**
- Furniture in choice of Serotina Cherry or Light Oak with satin or high gloss finish. American Walnut or Rovere Oak available as options
 - Avonite worktops and tiled floors in all guest bathrooms
 - Avonite worktop and timber-laid floor in galley
 - Choice of high quality carpet and upholstery fabric from extensive range
 - Curtains, blinds or sunscreens to all windows and portholes

- POWER AND DRIVE SYSTEMS**
- Twin Volvo IPS-600 with joystick control
 - Volvo active corrosion protection system
 - Power-assisted electronic steering system with hydraulic back-up
 - Electronic engine and gear shift controls
 - Engine room extractor fan

- ELECTRICAL SYSTEMS**
- 24 Volt:**
- 4 x heavy-duty batteries for engine starting
 - 4 x heavy-duty auxiliary batteries
 - 40 amp battery charger charging both banks of batteries via automatic switch charging system
- LED lighting throughout**
- 220/240 Volt:**
- 7kW diesel generator in own sound shield with water cooled specially silenced exhaust (Open only)
 - Shore support inlet in cockpit locker with storage for cable
 - Polarity check system

- Earth leakage safety trip
- Power points to all areas

- FUEL SYSTEM**
- Twin fuel tanks (in NS8 marine grade alloy) with interconnection system giving 291 gal/350 US gal/1,325l capacity
 - Fuel fillers on port and starboard side decks
 - High capacity fuel filters/water traps

- WATER SYSTEM**
- 80 gal/96 US gal/364l plus 11 gal/13 US gal/50l hot water calorifier and heated by engine and 240v immersion heater
 - Water level gauge
 - Deck filler

- FIRE EXTINGUISHERS**
- Automatic/manual override fire extinguishers in engine room with manual override
 - Hand-operated fire extinguishers (4) in owner's stateroom, guest cabin, galley and deck saloon

- BILGE PUMPS**
- Automatic electric bilge pumps (3)
 - High-capacity manual bilge pump with valve system and suction points in same areas

- OTHER ITEMS SUPPLIED AS STANDARD**
- Ensign staff
 - Fenders (6) and warps (4)
 - First aid kit
 - Tool kit
 - Set of manuals
 - Quilted bedspreads in all cabins

V39

- International award-winner – the most celebrated yacht of her generation
- Ultra-responsive handling, powerful acceleration
- Six-cylinder turbo diesel engines, speeds up to 39 knots
- Comprehensive high specification two-cabin interior
- Canvas sunroof creating 17 square feet (5m²) of open-air fun
- Resin-infused deep-V hull for increased volume and strength
- New optional sunpad version for 2015





An Icon is born

For every generation there is stand out moment. The V39 is that moment.

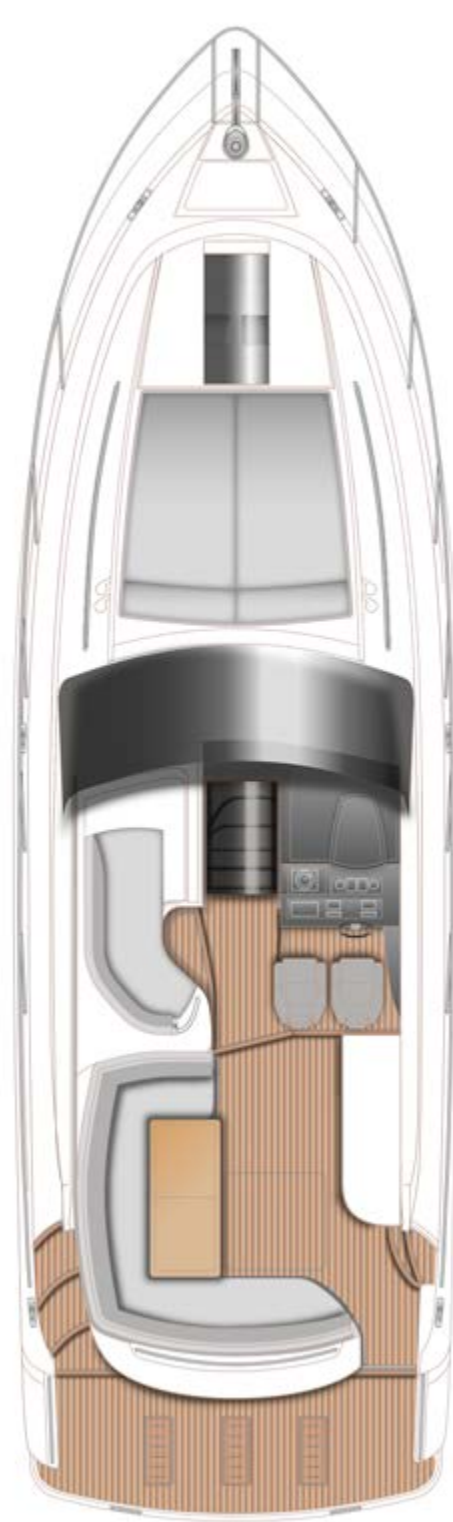
An entry-level sports yacht that comes with all the ability, quality and style of craft twice her size and price. Hailed as the 'best pound for pound sportscruiser' by the world's press, the V39's ultra-responsive handling and thrilling acceleration is something to behold.





Below decks, the two-cabin interior is unmistakably Princess - subtle ambient lighting, hand-stitched detailing, handcrafted cabinetry and skylights that make the lower deck a pleasure underway or at anchor.





MAIN DECK



MAIN DECK WITH SUNPAD OPTION



LOWER DECK OPTION

V39

Principal Dimensions	
Length overall (incl. pulpit)	42ft 6in (12.98m)
Length overall (excl. pulpit)	41ft 6in (12.65m)
Length of hull (excluding swimming platform)	39ft 3in (11.99m)
Beam	12ft 5in (3.81m)
Draft: (Drives raised)	1ft 10in (0.56m)
Draft: (Drives lowered)	3ft 4in (1.02m)
Displacement approx.	9,900kg (21,825 lbs)*
Fuel capacity	160 gal/192 US gal/730l
Water capacity (incl. calorifier)	73 gal/88 US gal/332l

Deck Fittings

- Teak-laid transom platform, cockpit deck and stairs to side decks
- Reversible electric anchor winch with helm position controls
- Self-stowing 16kg/35lbs Delta anchor with 30m of chain
- Stainless-steel cleats, fairleads and handrails
- Remote control searchlight
- Chain locker with stowage for 4 fenders (stowage for an additional 2 fenders in engine room)

Cockpit

- U-shaped seating with teak table (with optional conversion to double sunbed)
- L-shaped seat
- Electrically operated sliding sun roof
- Wetbar including sink, drawer refrigerator and optional electric barbecue
- Lockable gas strut assisted hatch to engine room
- Transom gate leading to bathing platform (with optional electro-hydraulic raise/lower mechanism), foldaway swimming ladder and hot and cold shower
- Liferaft storage locker
- Large transom storage locker
- Locker housing 240v shore support inlet
- Locker with remote fuel cocks
- Cockpit cover
- Optional sunpad layout available with aft seat extension and sliding backrests for conversion

Helm Position

- Twin helm seat with bolster
- Full engine instrumentation including fuel gauges and engine controls
- Navigation system including VHF/RT, speed and distance log, echo sounder with alarm and high speed magnetic compass
- Controls for windscreen wipers, bilge pump, anchor winch, trim tabs and sterndrive trim
- Chart table
- Remote control searchlight

Saloon

- U-shaped sofa with dining table (converts to double berth)
- Sideboard unit with glass and bottle storage
- Stereo radio/MP3 with saloon and cockpit speakers
- 24v and 220/240v electrical control panels
- Storage lockers

Galley

- 3-zone gas hob with flame-failure device
- Remote solenoid switch for gas system
- Combination microwave/conventional oven with grill
- Stainless-steel sink with monobloc mixer tap
- Refrigerator with freezer compartment
- Waste bin
- Storage cupboards, drawers and lockers

Accommodation & Interior Finishes

- All cabins and bathroom feature opening portholes
- All cabins feature 220/240v power points
- All mattresses pocket sprung
- Furniture in choice of Serotina Cherry or Light Oak with satin or high gloss finish, American Walnut or Rovere Oak available as options
- Avonite worktops and tiled floors in all guest bathrooms
- Avonite worktop and timber-laid floor in galley
- Choice of high quality carpet and upholstery fabric from extensive range
- Curtains, blinds or sunscreens to all windows and portholes

Owner's Cabin

- Large double bed with drawers below
- Wardrobe with shelves
- Vanity unit
- Storage lockers and drawers
- Deck hatch with integrated skylight and blind
- Overhead and individual berth lights
- En suite bathroom with day access incorporating electric quietflush toilet, separate stall shower, 240v shaver point, storage lockers and mirror

Aft Guest Cabin

- Two single beds with storage below (with option of sliding conversion to double)
- Sofa (with option of conversion to berth)
- Wardrobe with shelves
- Storage lockers and drawers
- Overhead and individual berth lights

Power and Drive Systems

- Twin duo-prop stern drives
- Power-assisted electronic steering system with hydraulic back-up
- Electronic engine and gear shift controls
- Engine room extractor fan

Electrical Systems

12 Volt:

- 2 x heavy-duty batteries for engine starting
- 2 x heavy-duty auxiliary batteries
- Battery link facility with remote control at helm position
- 70 amp battery charger charging both banks of batteries via automatic switch charging system
- LED lighting throughout

220 Volt:

- Shore support inlet in cockpit locker with storage for cable
- Polarity check system
- Earth leakage safety trip
- Power points to all areas

Fuel System

- Twin fuel tanks (in NS8 marine grade alloy) with interconnection system giving 143 gal/172 US gal/650l capacity
- Fuel fillers on port and starboard side decks
- High-capacity fuel filters/water traps
- Deck filler

Engine Options - Diesel

Twin Volvo D6-330 DP (2 x 330mhp)

Speed range: 37-39 knots*

Water System

- 73 gal/88 US gal/332l plus 7 gal/8.5 US gal/36l hot water calorifier and heated by engine and 240v immersion heater
- Water level gauge
- Deck filler

Fire Extinguishers

- Automatic/manual override fire extinguisher in engine room with warning system at helm position
- Hand-operated fire extinguishers (4) in owner's cabin, guest cabin, galley and cockpit

Bilge Pumps

- Automatic electric bilge pumps (2)
- High-capacity manual bilge pump with valve system and suction points in same areas

Other Items Supplied as Standard

- Ensign staff
- Fenders (6) and warps (4)
- First Aid kit
- Tool kit
- Set of manuals
- Quilted bedspreads in all cabins

S Class

Sportbridge Yachts



Sports day in South Beach

"We started out with a fast cruise
off South Beach and ended up with
dinner on deck downtown."



"We just took delivery of our new S72 Sportbridge. She really is the most spectacular yacht. From Miami Beach to the Bahamas is a short run – 60 miles – but the pace and style is so different. Fast, city life in Miami, laid back shabby chic in the Bahamas. The Sportbridge design works so well – fast cruising, great handling and so much space inside and out – especially when that huge sunroof is open."





"We took a ride out past Stiltsville to the shallows by Fowey Rock. We watched the kitesurfers, swam in the sand lagoons and then launched the tender to waterski. We cooked dinner and ate at anchor with a stunning sunset for scenery."



S72

- Thoroughbred performance
- Incredibly versatile deck space – cockpit, foredeck and Sportbridge seating offer so much choice
- Wonderful 360 degree saloon views from extensive windows, opening glass bulkhead and floating sportbridge stairs
- Three en suite cabins including master stateroom with stunning hull-side windows
- Garage for 12ft (3.8m) tender or jetski with additional stowage on the hydraulic bathing platform
- Resin-infused for strength, weight saving and fast efficient cruising
- Optional open or enclosed galley





The S72 Sportbridge –
Incredible space.
Unrivalled performance.



A top speed of 38 knots, taut handling and surging power deliver a thrilling sense of acceleration and control. Space, inside and out, is remarkable. The glass and stainless-steel saloon doors and window slide away, doubling the size of your social area with the deck saloon and cockpit all on one level. Move up to the concealed Sportbridge, to find an incredible, deep-sided deck to enjoy the ride or simply the sun.

Open the sunroof and the entire saloon feels like it has become part of the deck. The cockpit, with its wraparound seating and wetbar, hydraulic bathing platform and tender garage combine to deliver the ultimate base for watersports.





SPORTBRIDGE



MAIN DECK



LOWER DECK

S72

Principal Dimensions	
Length overall (incl. pulpit)	74ft 0in (22.55m)
Length overall (excl. pulpit)	72ft 3in (22.03m)
Beam	17ft 8in (5.38m)
Draft	4ft 10in (1.48m)
Displacement approx.	40,200kg (88,500lbs)*
Fuel capacity	1,055 gal/1,268 US gal/4,800l
Water capacity (incl. calorifier)	172 gal/206 US gal/782l

- DECK FITTINGS**
- Teak-laid transom platform, cockpit deck, sportbridge, side decks and stairs to side decks
 - Reversible electric anchor winch with foredeck and helm position controls
 - Self-stowing 40kg/88lbs Delta anchor with 90m of chain
 - Foredeck seating and sunbathing area
 - Twin electric-powered sternline mooring winches
 - Stainless-steel cleats, fairleads and handrails
 - Remote control searchlight
 - Freshwater deck/anchor wash
 - Storage lockers for rope, fenders and foredeck sunbed cushions
 - LED deck level lighting

- COCKPIT**
- U-shaped seating with teak folding table
 - Sunbed aft with garage below
 - Twin transom gates leading to bathing platform with electro-hydraulic raise/lower mechanism, foldaway swimming ladder and hot and cold shower
 - Electro-hydraulic telescopic passerelle (3.8m)
 - Wetbar including sink, electric barbecue and coolbox
 - Speakers linked to deck saloon sound system
 - Lockable gas strut assisted hatches to engine room and lazarette
 - Transom access to crew cabin
 - Lifteraft storage locker
 - Locker housing 240v shore support inlet
 - Locker with remote fuel cocks
 - Cockpit cover

- SPORTBRIDGE**
- Helm position with raise/lower console, repeat navigation equipment including radar/chartplotter and engine instrumentation
 - U-shaped seating area with folding teak table
 - L-shaped seating (converts to sunpad)
 - Wetbar with sink, electric barbecue and coolbox
 - Stereo radio/MP3 with waterproof speakers

- LOWER HELM POSITION**
- Twin helm seats with electric adjustment
 - Helmsman's door to side deck with electric opening window to port
 - Full engine instrumentation including fuel gauges, exhaust temperature, fuel contamination alarms and rudder position indicator
 - Navigation system including colour radar, GPS and chartplotter (twin display), VHF/RT, speed and distance log, echo sounder with alarm, autopilot and high speed magnetic compass

- Controls for bow thruster, windscreen wipers, bilge pump, anchor winch and trim tabs (with indicator)
- Chart table
- 24v and 240v control panel
- Remote control searchlight
- 12v outlet
- Red night lighting
- Toughened glass screen (clear for night vision)

- DECK SALOON**
- Stainless-steel framed sliding doors and electric powered aft window to cockpit
 - U-shaped sofa and coffee table
 - Entertainment centre incorporating 46" LED TV on electric raise/lower mechanism and DVD, radio/MP3 system with surround sound system
 - Sideboard unit with glass and bottle storage, refrigerator and icemaker
 - Dining area
 - Electric opening roof

- GALLEY**
- 4-zone ceramic hob
 - Combination microwave/conventional oven with grill
 - Twin stainless-steel sinks with monobloc mixer tap
 - Full height fridge/freezer
 - Dishwasher
 - Storage cupboards, drawers and lockers

- ACCOMMODATION**
- All cabins and bathrooms feature opening portholes and air conditioning outlets
 - All cabins feature 220/240v power points
 - All mattresses pocket sprung
 - All bathrooms feature full shower stalls, electric quietflush toilets, extractor fan and 240v shaver points
 - Combination washer/dryer and storage area is fitted in the lobby area

- OWNER'S STATEROOM**
- Large double bed with drawers below
 - Dressing area with wardrobes with hanging and drawer storage
 - Dressing table with chair
 - Sofa
 - 40" LED TV, DVD, radio/MP3
 - Overhead and individual berth lights
 - En suite bathroom

- FORWARD GUEST CABIN**
- Large double bed with drawers below
 - Wardrobe with shelves
 - Dressing table with stool

- Deck hatch with integrated skylight and blind
- Stereo radio/MP3
- Storage lockers
- Overhead and individual berth lights
- En suite bathroom

- STARBOARD GUEST CABIN**
- Two single berths with drawers below with optional powered sliding conversion to double
 - Wardrobe with shelf
 - Storage lockers
 - Overhead and individual berth lights
 - En suite bathroom with day access

- CREW CABIN**
- Two single berths
 - Storage lockers and hanging locker
 - Overhead and individual berth lights
 - Bathroom with stall shower, electric quietflush toilet and washbasin

- INTERIOR FINISH**
- Furniture in choice of Serotina Cherry or Light Oak with satin or high gloss finish, American Walnut or Rovere Oak available as options
 - Avonite worktops and tiled floors in all guest bathrooms
 - Granite/marble worktops in galley
 - Timber-laid galley and helm floors
 - Choice of high quality carpet and upholstery fabric from extensive range
 - Curtains, blinds or sunscreens to all windows and portholes

- POWER AND DRIVE SYSTEMS**
- 24 Volt:**
- 5-bladed propellers in nickel aluminium bronze
 - Bow thruster (170kgf/375lbf)
 - Power-assisted electro-hydraulic steering system with hydraulic back-up
 - Electronic engine and gear shift controls
 - Dripless shaft seals
 - Engine room extractor fan with electronic time delay

- ELECTRICAL SYSTEMS**
- 24 Volt:**
- 4 x heavy duty batteries for engine starting
 - 6 x heavy duty auxiliary batteries
 - 2 x 60 amp battery charger charges both banks of batteries via an automatic switch charging system
 - Remote battery switches with control switch at main panel
 - LED lighting throughout

- ENGINE OPTIONS - DIESEL**
- Twin Caterpillar C32 A (2 x 1,622mhp)
 - Speed range: 34-36 knots†
 - Twin Caterpillar C32 A (2 x 1,723mhp)
 - Speed range: 35-37 knots†
 - Twin MAN V12 1800 (2 x 1,800mhp)
 - Speed range: 36-38 knots†

- 220/240 Volt:**
- 22.5kW diesel generator with own starting battery and specially silenced exhaust
 - Polarity check system
 - Earth leakage safety trip
 - Power points to all areas

- FUEL SYSTEM**
- Twin fuel tanks (in NS8 marine grade alloy) with interconnection system giving 1,055 gal/1,268 US gal/4,800l capacity
 - Fuel fillers on port and starboard side decks
 - High capacity fuel filters/water traps

- WATER SYSTEM**
- 150 gal/180 US gal/682l plus 22 gal/26 US gal/100l hot water calorifier and heated by engines and 240v immersion heater
 - Water level gauge
 - Deck filler
 - Electric quietflush WC system with 60 gal/72 US gal/273l holding tank

- AIR CONDITIONING**
- 108,000Btu chilled water system with outlets in all accommodation areas and incorporating reverse cycle heating with linked windscreen demist system. Suitable for tropical conditions (40°C)

- FIRE EXTINGUISHERS**
- Automatic/manual override fire extinguishers in engine room with manual override
 - Hand-operated fire extinguishers (5) in owner's stateroom, guest cabins, galley, helm position and crew

- BILGE SYSTEMS**
- Automatic electric bilge pumps (6)
 - High capacity manual bilge pump with valve system and bilge suction points in same area

- OTHER ITEMS SUPPLIED AS STANDARD**
- Set of cutlery, crockery and glasses
 - Set of towels (6 large, 6 hand)
 - Ensign staff
 - Fenders (8) and warps (4)
 - First aid kit
 - Set of manuals

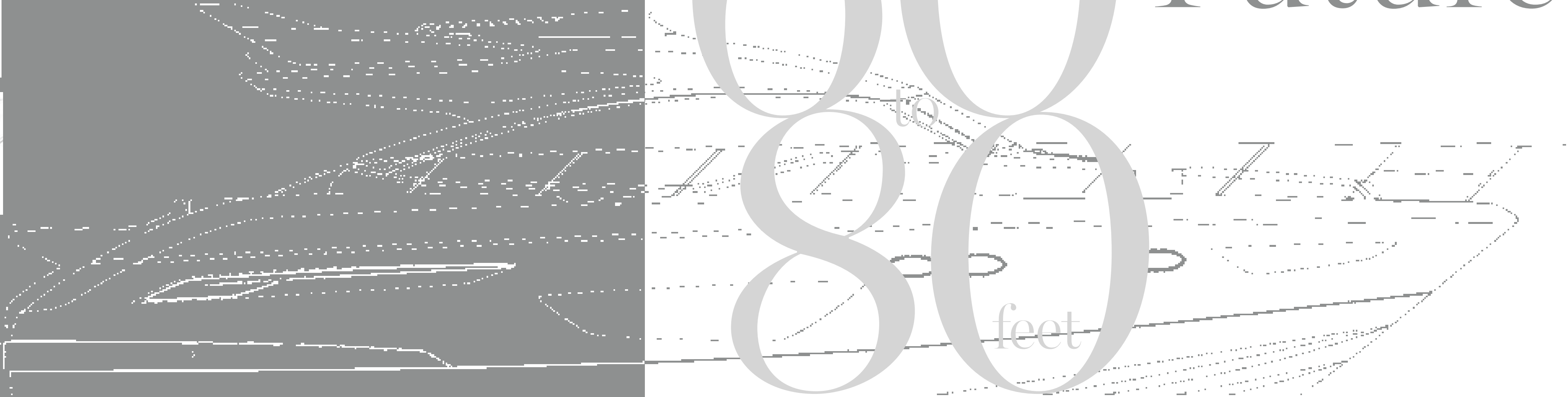
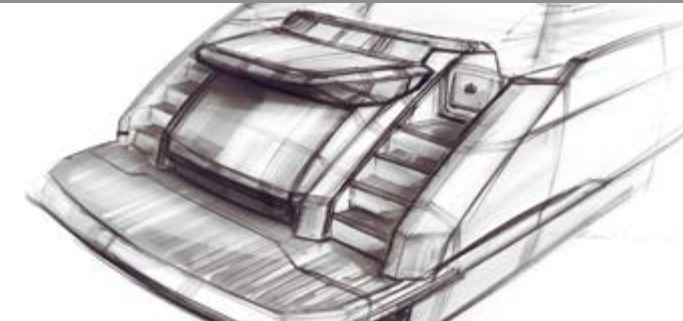
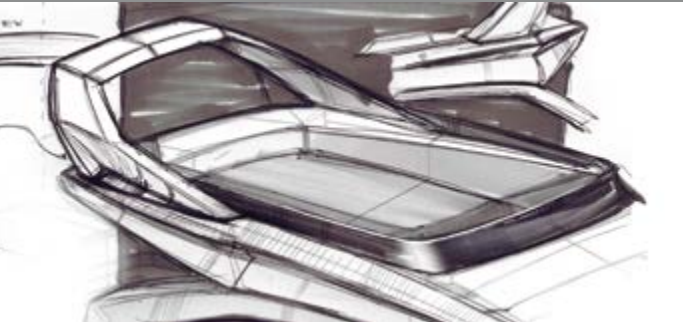
This new generation of Princess began with the creation of the S72, but it will soon include models in the 60ft and 80ft range – every boat delivering an exceptional combination of vast deck space and the handling and muscle of a true thoroughbred.

The sleek low profile of the S Class hints to the advanced engineering below the water line. Powered using the latest diesel technology, the variable-geometry deep-V hull cuts through the water at incredible speed. Further enhanced by our unique resin infusion composite technology, the entire structure is significantly

lighter than the competition while retaining incredible strength. What that means for you is a hull that is strong, capable yet highly efficient.

Inside, the saloon and master cabin benefit from the distinctive S Class window line which delivers masses of sharply sculpted tinted glass.

On deck, S Class features include an expansive cockpit, foredeck seating and a tender garage. The sleek Sportbridge only adds to the boat's low-swept looks. Take the helm of an S Class from up here and you will have the kind of fun that keeps you grinning all day.



From 60 to 80 feet S Class Future



DISTRIBUTORS

With an extensive network of distributors around the globe, we are able to bring you personalised world-class service almost anywhere. We do all that we can to make sure that the process of buying a Princess is yet another exciting aspect of ownership.

Our specialist dealers have years of experience and unparalleled knowledge of our yachts. For more information on any one of the yachts in our range, please contact your local Princess office. Address and contact details for the offices in the countries listed can be found on our website www.princessyachts.com



NORTH AMERICA

Canada • Caribbean • Mexico • USA

CENTRAL AND SOUTH AMERICA

Argentina • Brazil • Chile • Colombia • Ecuador • Guatemala • Panama • Paraguay
• Peru • Uruguay • Venezuela

EUROPE

Austria • Belgium • Bulgaria • Croatia • Cyprus • Czech Republic • Denmark • Eire
• Estonia • Finland • France • Germany • Gibraltar • Greece • Holland • Hungary
• Italy • Kazakhstan • Latvia • Liechtenstein • Lithuania • Luxemburg • Malta • Monaco
• Netherlands • Norway • Poland • Portugal • Romania • Russia • Serbia, Montenegro
• Bosnia and Herzegovina • Slovakian Republic • Slovenia • Spain • Sweden
• Switzerland • The Balearics • Turkey • Ukraine • United Kingdom

MIDDLE EAST

Azerbaijan • Bahrain • Israel • Jordan • Kuwait • Lebanon • Oman • Qatar • Saudi Arabia
• United Arab Emirates

AFRICA

Algeria • Egypt • Ghana • Libya • Mauritius • Nigeria • South Africa • Tunisia

ASIA

China • Hong Kong • India • Indonesia • Japan • Malaysia • Philippines • Singapore
• S. Korea • Taiwan • Thailand • Vietnam

PACIFIC RIM

Australia • New Zealand



STYLING AND ACCESSORIES SUPPLIED BY KIND PERMISSION OF:

Alessandra Gold Concept Store
Amishi London
Aquarella Swimwear
Aspinal of London
Bruno Triplet
Charles Albert
Dancing Leopard
Farah Khan
Fox Linton
Gomez-Gracia
Harlequin London
I.d. Sarrieri
Island Company
Kara by Kara Ross

Lascana
Loius Vuitton
Lsa International
Marianna G
Melissa Obadash
Missoni Home
Ortiga
Oyuna
Pickett
Porta Romana
Showroom 305
Taj by Sabrina Crippa
Therapy Miami Beach

PHOTOGRAPHY BY:

Tom Benn
Mark Bramley
Michael Heffernan
Sean Gleason
Mike Evans
Quin Bisset
Jerome Kelagopian

DESIGN AND PRODUCTION BY:

Steven Taylor Associates
www.steventaylorassociates.com

PRINCESS YACHTS THANKS:

Princess would also like to extend their thanks to Princess Motor Yacht Sales and Princess Yachts America for their kind assistance with this year's photography.

*Displacements are calculated with 50% fuel and water but with no optional equipment fitted or other gear or crew aboard.

* Maximum speeds will vary depending on cleanliness of hull, condition of sterngear, loading of craft, water and air temperatures, sea conditions and other factors. Speed estimates are therefore given in good faith but without warranty or liability on the part of Princess Yachts International plc. Craft illustrated in this brochure may be fitted with certain optional equipment. Specifications may be changed at any time without notice or liability. USA Specification

† Princess yachts built for use in North America are certified by the National Marine Manufacturer's Association (NMMA) to comply with safety recommendations set forth by the American Boat and Yacht Council (ABYC) and with standards established by the United States Coast Guard Office of Boating Safety. In addition, certain other specifications, which vary by model, are upgraded on Princess yachts built for use in North America. Thus, specifications and equipment will vary from the information listed in the brochure for North American Princess yachts (e.g. air-conditioning and an upgraded generator will be included as standard for all North American models and electric cooking facilities will be supplied in place of gas systems). Please consult the USA Specification Brochure for full details regarding the North American specifications for individual models.

