

Name: \_\_\_\_\_

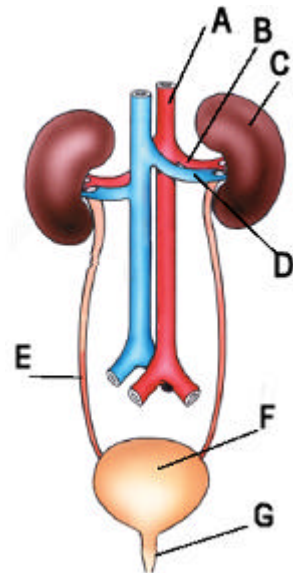
Date: \_\_\_\_\_

1. Excretion is \_\_\_\_\_ (5)

2. The diagram shows the Urinary System in the human. Label the parts marked with a letter.

- A= \_\_\_\_\_
- B= \_\_\_\_\_
- C= \_\_\_\_\_
- D= \_\_\_\_\_
- E= \_\_\_\_\_
- F= \_\_\_\_\_
- G= \_\_\_\_\_

(7 x 2)



3. Kidneys filter the blood and remove what three substances?

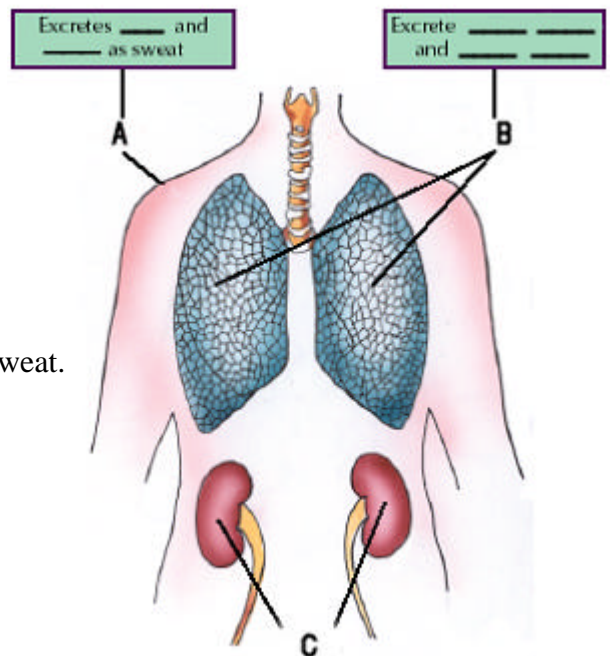
- (i) \_\_\_\_\_
- (ii) \_\_\_\_\_
- (iii) \_\_\_\_\_

(3 x 2)

4. From the diagram, name A, B and C.

- A = \_\_\_\_\_
- B = \_\_\_\_\_
- C = \_\_\_\_\_

(3 x 3)



5. Fill in the blanks for A and B (from diagram)

**Organ A** - Excretes \_\_\_\_\_ and \_\_\_\_\_ as sweat.

**Organs B** - Excrete \_\_\_\_\_ and \_\_\_\_\_.

(6 x 2)

6. Name the chemical that turns milky/cloudy when Carbon Dioxide is added to it.

Chemical = \_\_\_\_\_

(4)