

**SCIENCE PHASE 2  
LAS POSITAS COLLEGE  
LIVERMORE, CALIFORNIA**

**LABORATORY DESIGN  
SKETCHBOOK**

**2009 NOVEMBER 25**

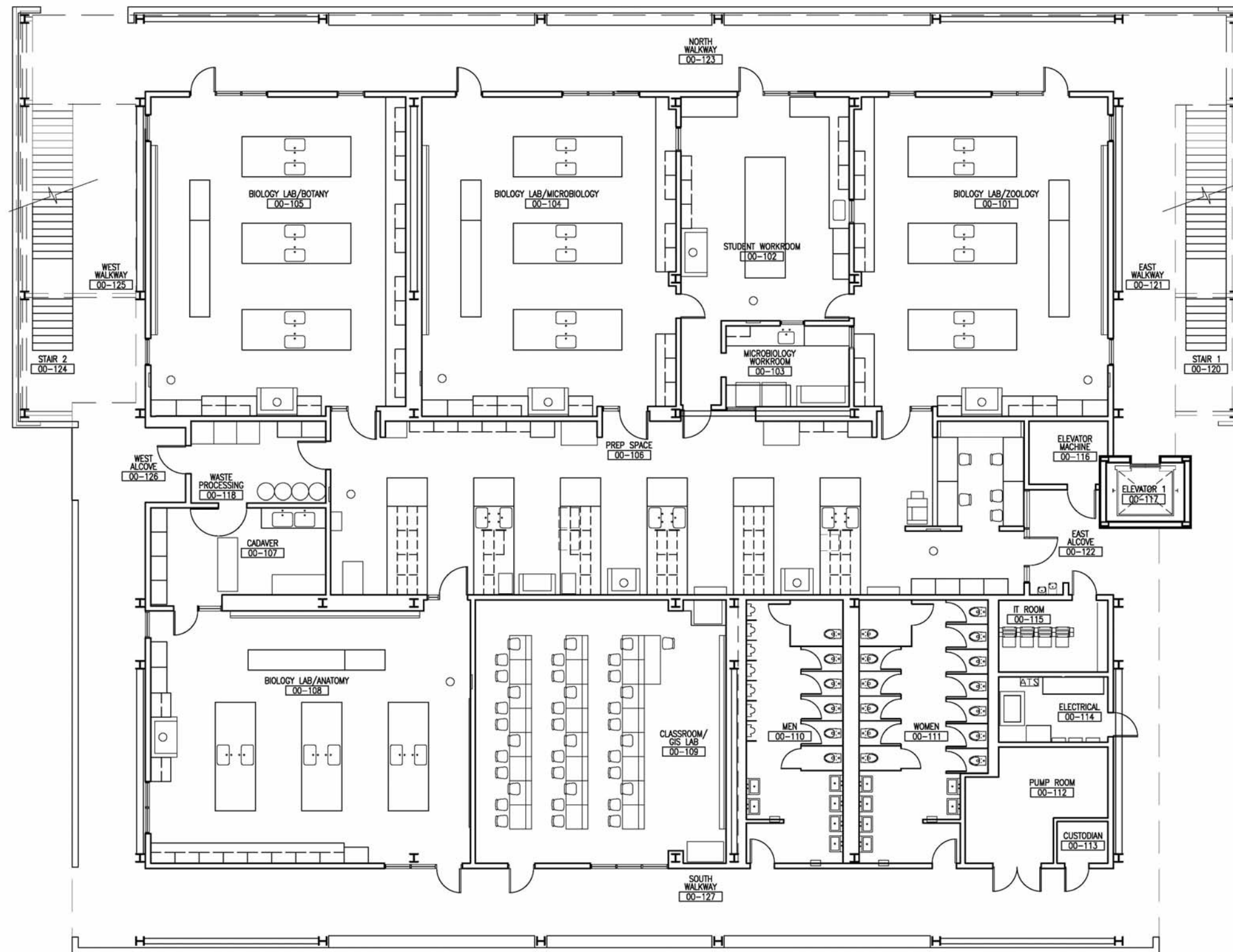


# CONTENTS

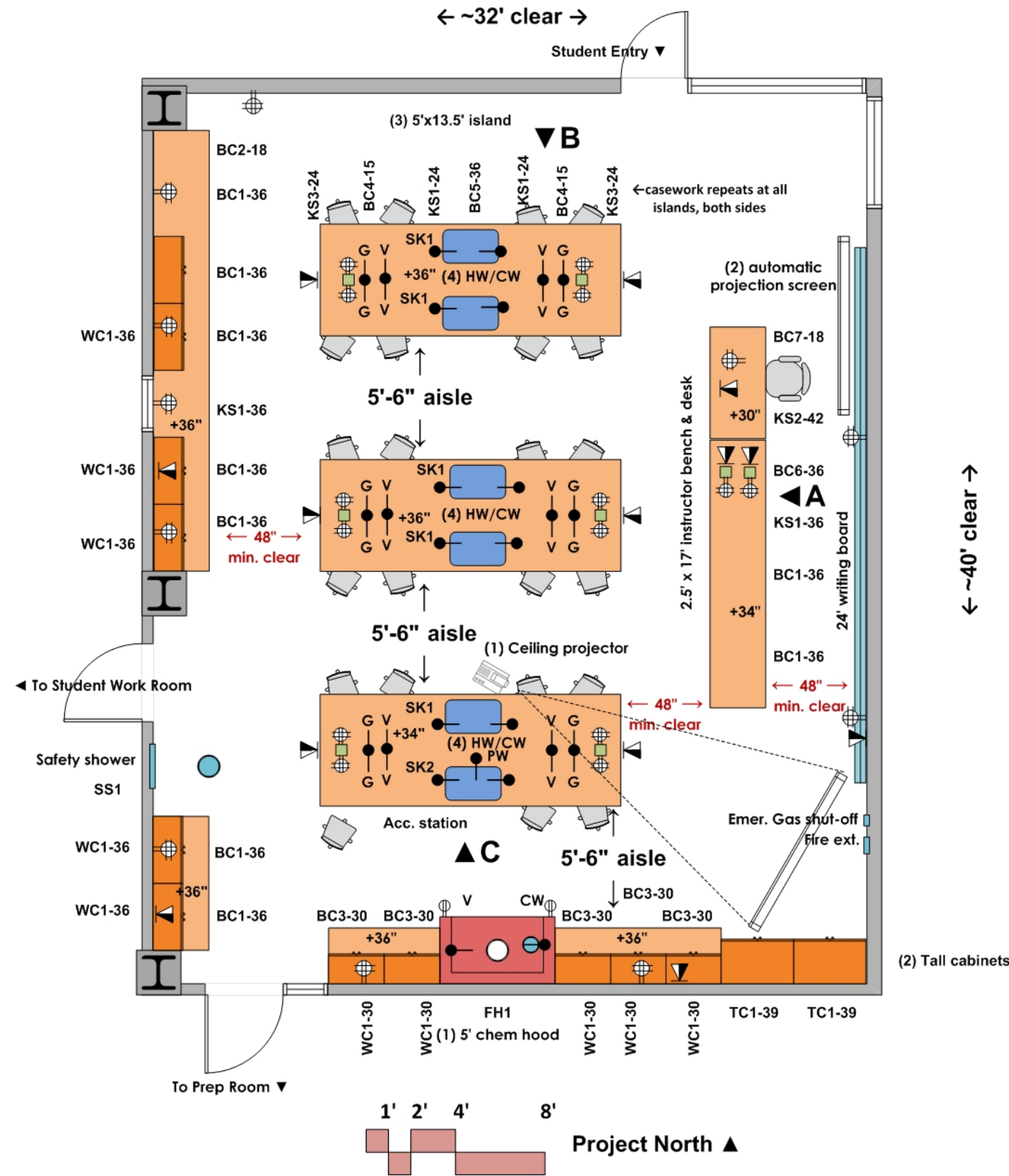
First Floor Plan . . . . .	3
Biology/Zoology Lab 101 . . . . .	4
Student Workroom/ Micro Workroom 102/103 . . . . .	5
Microbiology Lab 104. . . . .	6
Biology/Botany Lab 105 . . . . .	7
Prep Room 106 . . . . .	8
Cadaver Room 107. . . . .	9
Biology Anatomy Lab 108. . . . .	10
Elevations . . . . .	11
Casework Schedule . . . . .	20
Sink Schedule . . . . .	22
Fume Hood Schedule . . . . .	23
Cut Sheets . . . . .	25

# FIRST FLOOR PLAN

## NEW BUILDING



# BIOLOGY/ZOOLOGY LAB 101



## ARCHITECTURAL

Occupancy: B  
 Floor: rubber tile & base  
 Walls: gypsum board and enamel paint  
 Ceiling: 10' minimum acoustic tile  
 Doors: 3<sup>6</sup> to prep room and student work rooms  
 3<sup>0</sup> at lab entry  
 Acoustic Attenuation: NC 40 or less  
 Vibration Attenuation: 4000 microinches or less  
 Light Attenuation: Blackout blinds at windows  
 Accessibility: (1) fume hood, (1) student island, and instructor bench

## MECHANICAL

Hours of operation: 6 am to 10 pm  
 Temperature: 68-72 deg. F, +/- 2 deg. F  
 100% exhaust- no recirculation of air  
 Exhaust on emergency power supply  
 (6) air changes per hour occupied  
 (4) air changes per hour unoccupied  
 Provide night set back to (4) air changes per hour from 10 pm to 6 am; Pressure: Negative  
 Fume Hood Exhaust: 600 cfm at 18" sash opening  
 Humidity: Ambient

## ELECTRICAL

110v fourplex and duplex outlets  
 Standby power at equipment space  
 Data junction boxes at perimeter and islands as noted  
 Lighting: indirect fluorescent @ 75 f.c.

## PLUMBING

Hot/Cold water at sinks with vacuum breakers with foot operation pedals  
 Sinks to be 30"l x 16" w x 17.8" d  
 Cold water at fume hood with vacuum breaker  
 Vacuum at fume hood; Pure Water at sinks  
 Gas and Vacuum at islands  
 Tempered domestic water at safety shower/eyewash  
 Capped floor drain below safety shower

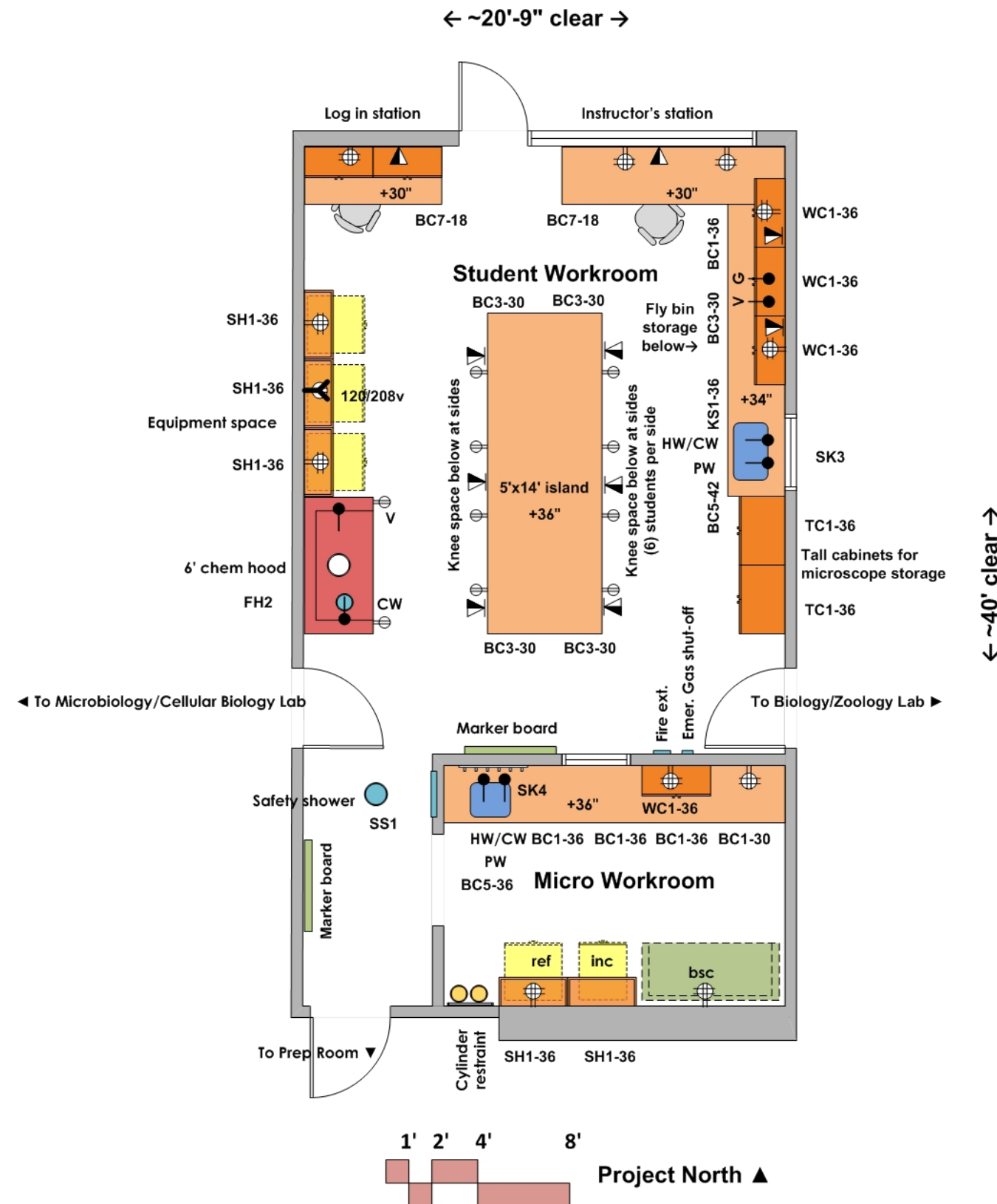
## CONTRACTOR FURNISHED EQUIPMENT

(1) Chemical Fume Hood (VAV)  
 Wood casework; Resin tops and sinks  
 Faucets & fittings  
 Writing board- 3 layer vertical sliding panels  
 Projection Screens; Digital projection system  
 Open shelf base cabinets  
 Media cabinet at demo bench

## COLLEGE FURNISHED EQUIPMENT

Chairs; Digital projector  
 Benchtop analytical instruments  
 Soap and towel dispensers at benchtop  
 Document projector at demo bench

# STUDENT WORKROOM MICRO WORKROOM 102, 103



## ARCHITECTURAL

Occupancy: B  
 Floor: rubber tile & base  
 Walls: gypsum board and enamel paint  
 Ceiling: 10' acoustic tile  
 Doors: 3<sup>6</sup> interior; 3<sup>0</sup> exterior  
 Acoustic Attenuation: NC 40 or less  
 Vibration Attenuation: 4000 microinches or less  
 Light Attenuation: blinds at windows  
 Accessibility: fume hood, sink  
 Shelf at exterior entry of lab for student drinks

## MECHANICAL

Hours of operation: 6 am to 10 pm  
 Temperature: 68-72 deg. F, +/- 2 deg. F  
 100% exhaust- no recirculation of air  
 Exhaust on emergency power supply  
 (6) air changes per hour occupied  
 (4) air changes per hour unoccupied  
 Provide night set back to (4) air changes per hour from 10 pm to 6 am; Pressure: Negative  
 Fume Hood Exhaust: 750 cfm at 18" sash opening  
 Humidity: Ambient

## ELECTRICAL

110v fourplex and duplex outlets  
 120/208v at equipment space  
 Standby power at equipment space  
 Data junction boxes at perimeter and islands as noted  
 Lighting: indirect fluorescent @ 75 f.c.

## PLUMBING

Hot/Cold water at sinks with vacuum breakers  
 Cold water at fume hood with vacuum breaker  
 Vacuum at fume hood  
 Pure Water at sinks  
 Tempered domestic water at safety shower/eyewash  
 Capped floor drain below safety shower

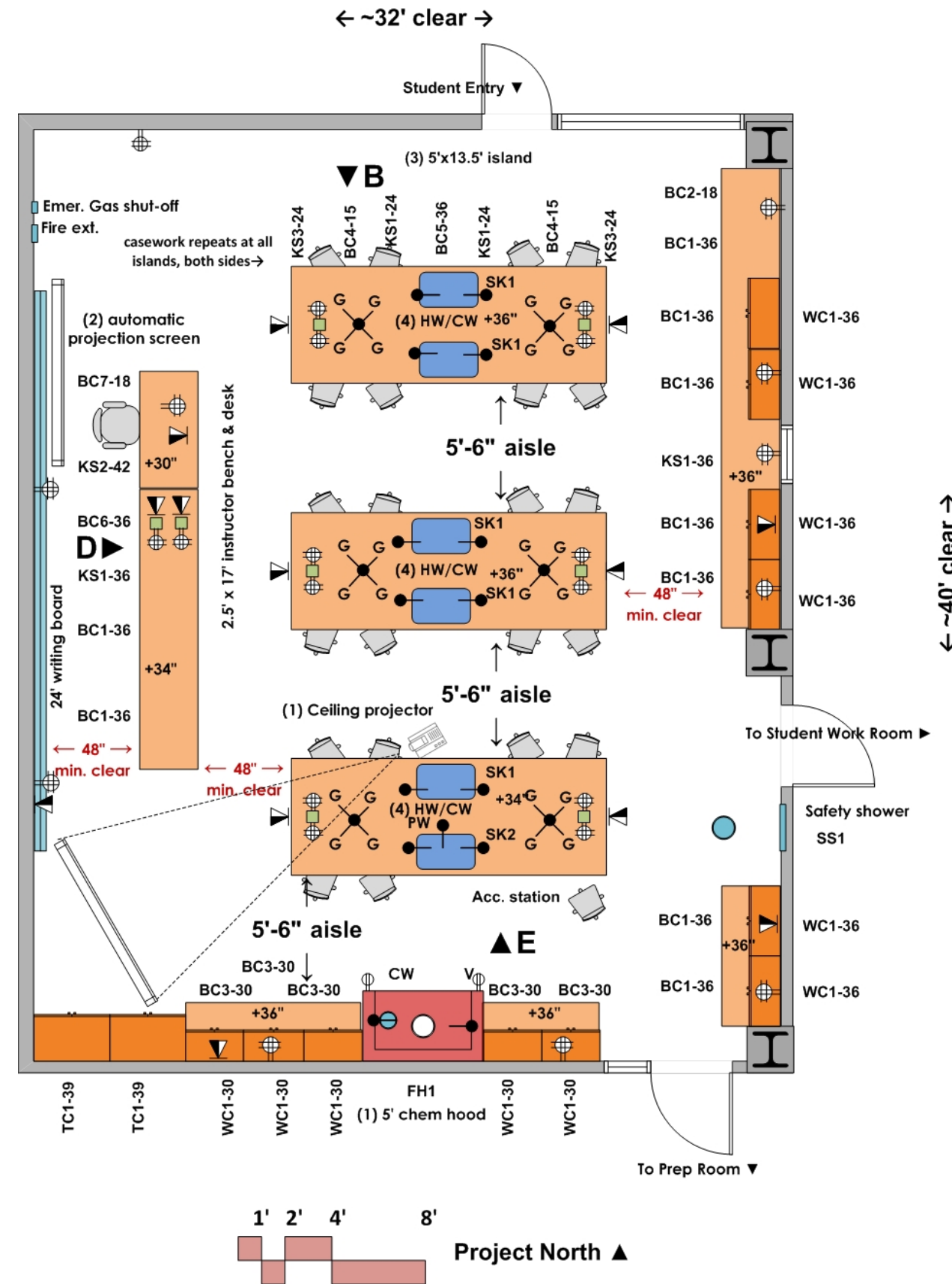
## CONTRACTOR FURNISHED EQUIPMENT

(1) Chemical Fume Hood (VAV)  
 Casework  
 Resin tops and sinks  
 Faucets & fittings  
 Open shelf base cabinets for fly bin storage- bins measure 12" w x 15" d x 7" h

## COLLEGE FURNISHED EQUIPMENT

Chairs  
 Benchtop analytical instruments  
 Refrigerators; Incubators  
 Biological Safety Cabinet (bsc) Class II Type A

# MICROBIOLOGY LAB 104



**ARCHITECTURAL**

Occupancy: B  
 Floor: rubber tile & base  
 Walls: gypsum board and enamel paint  
 Ceiling: 10' minimum acoustic tile  
 Doors: 3<sup>6</sup> to prep room and student work rooms  
 3<sup>0</sup> at lab entry

Acoustic Attenuation: NC 40 or less  
 Vibration Attenuation: 4000 microinches or less  
 Light Attenuation: Blackout blinds at windows  
 Accessibility: (1) fume hood, (1) student island, and instructor bench

**MECHANICAL**

Hours of operation: 6 am to 10 pm  
 Temperature: 68-72 deg. F, +/- 2 deg. F  
 100% exhaust- no recirculation of air  
 Exhaust on emergency power supply  
 (6) air changes per hour occupied  
 (4) air changes per hour unoccupied  
 Provide night set back to (4) air changes per hour from 10 pm to 6 am  
 Pressure: Negative  
 Fume Hood Exhaust: 600 cfm at 18" sash opening  
 Humidity: Ambient

**ELECTRICAL**

110v fourplex and duplex outlets  
 Standby power at equipment space  
 Data junction boxes at perimeter and islands as noted  
 Lighting: indirect fluorescent @ 75 f.c.

**PLUMBING**

Hot/Cold water at sinks with vacuum breakers with foot operation pedals  
 Sinks to be 30"l x 16" w x 17.8" d  
 Cold water at fume hood with vacuum breaker  
 Vacuum at fume hood  
 Pure Water at sinks  
 Gas and Vacuum at islands  
 Tempered domestic water at safety shower/eyewash  
 Capped floor drain below safety shower

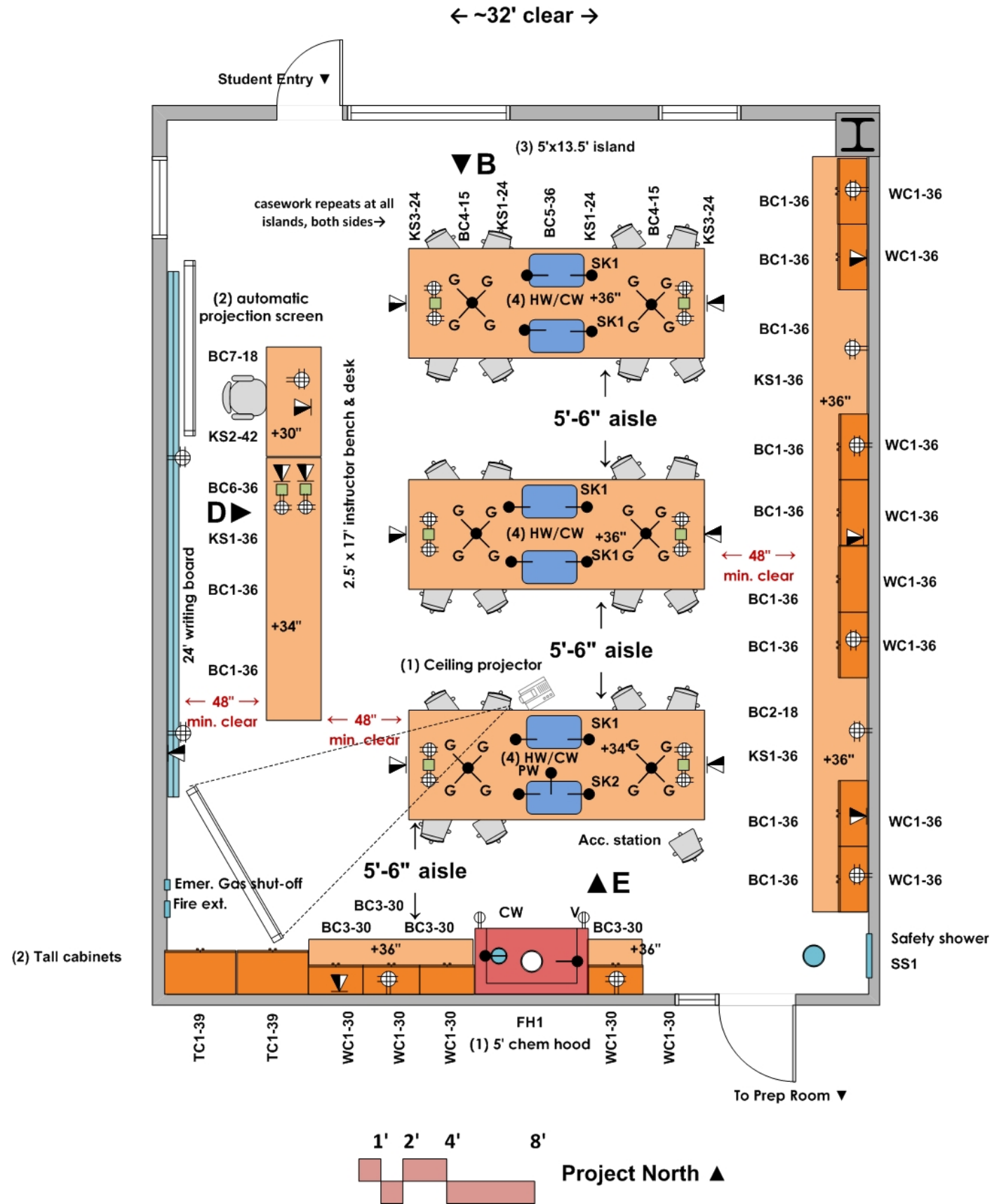
**CONTRACTOR FURNISHED EQUIPMENT**

(1) Chemical Fume Hood (VAV)  
 Wood casework; Resin tops and sinks  
 Faucets & fittings  
 Writing board- 3 layer vertical sliding panels  
 Projection Screens; Digital projection system  
 Open shelf base cabinets  
 Media cabinet at demo bench

**COLLEGE FURNISHED EQUIPMENT**

Chairs; Digital projector  
 Benchtoper analytical instruments  
 Soap and towel dispensers at benchtoper  
 Document projector at demo bench

# BIOLOGY/BOTANY LAB 105



## ARCHITECTURAL

Occupancy: B  
 Floor: rubber tile & base  
 Walls: gypsum board and enamel paint  
 Ceiling: 10' minimum acoustic tile  
 Doors: 3<sup>6</sup> to prep room and student work rooms  
 3<sup>0</sup> at lab entry

Acoustic Attenuation: NC 40 or less  
 Vibration Attenuation: 4000 microinches or less  
 Light Attenuation: Blackout blinds at windows  
 Accessibility: (1) fume hood, (1) student island, and instructor bench

## MECHANICAL

Hours of operation: 6 am to 10 pm  
 Temperature: 68-72 deg. F, +/- 2 deg. F  
 100% exhaust- no recirculation of air  
 Exhaust on emergency power supply  
 (6) air changes per hour occupied  
 (4) air changes per hour unoccupied  
 Provide night set back to (4) air changes per hour from 10 pm to 6 am  
 Pressure: Negative  
 Fume Hood Exhaust: 600 cfm at 18" sash opening  
 Humidity: Ambient

## ELECTRICAL

110v fourplex and duplex outlets  
 Standby power at equipment space  
 Data junction boxes at perimeter and islands as noted  
 Lighting: indirect fluorescent @ 75 f.c.

## PLUMBING

Hot/Cold water at sinks with vacuum breakers with foot operation pedals  
 Sinks to be 30"l x 16" w x 17.8" d  
 Cold water at fume hood with vacuum breaker  
 Vacuum at fume hood  
 Pure Water at sinks  
 Gas and Vacuum at islands  
 Tempered domestic water at safety shower/eyewash  
 Capped floor drain below safety shower

## CONTRACTOR FURNISHED EQUIPMENT

(1) Chemical Fume Hood (VAV)  
 Wood casework; Resin tops and sinks  
 Faucets & fittings  
 Writing board- 3 layer vertical sliding panels  
 Projection Screens; Digital projection system  
 Open shelf base cabinets  
 Media cabinet at demo bench

## COLLEGE FURNISHED EQUIPMENT

Chairs; Digital projector  
 Benchttop analytical instruments  
 Soap and towel dispensers at benchttop  
 Document projector at demo bench

# PREP ROOM 106

## ARCHITECTURAL

Occupancy: B  
 Floor: rubber tile & base  
 Walls: gypsum board and enamel paint  
 Ceiling: 10' acoustic tile  
 Doors: 3<sup>6</sup> at all exterior and lab doors; 3<sup>0</sup> at classroom  
 Acoustic Attenuation: NC 40 or less  
 Vibration Attenuation: 4000 microinches or less  
 Light Attenuation: blinds at windows  
 Accessibility: (1) fume hood, (1) peninsula bench and sink

## MECHANICAL

Hours of operation: 6 am to 10 pm  
 Temperature: 68-72 deg. F, +/- 2 deg. F  
 100% exhaust- no recirculation of air  
 Exhaust on emergency power supply  
 (6) air changes per hour occupied  
 (4) air changes per hour unoccupied  
 Provide night set back to (4) air changes per hour from 10 pm to 6 am  
 Pressure: Negative  
 Exhaust at Corrosive storage cabinets  
 Fume Hood Exhaust: 750 cfm at 18" sash opening  
 Humidity: Ambient

## ELECTRICAL

110v fourplex and duplex outlets  
 120/208v power at equipment space and copier location  
 208v or 480v power at autoclave  
 Standby power at equipment space  
 Data junction boxes at perimeter and islands as noted  
 Lighting: indirect fluorescent @ 75 f.c.

## PLUMBING

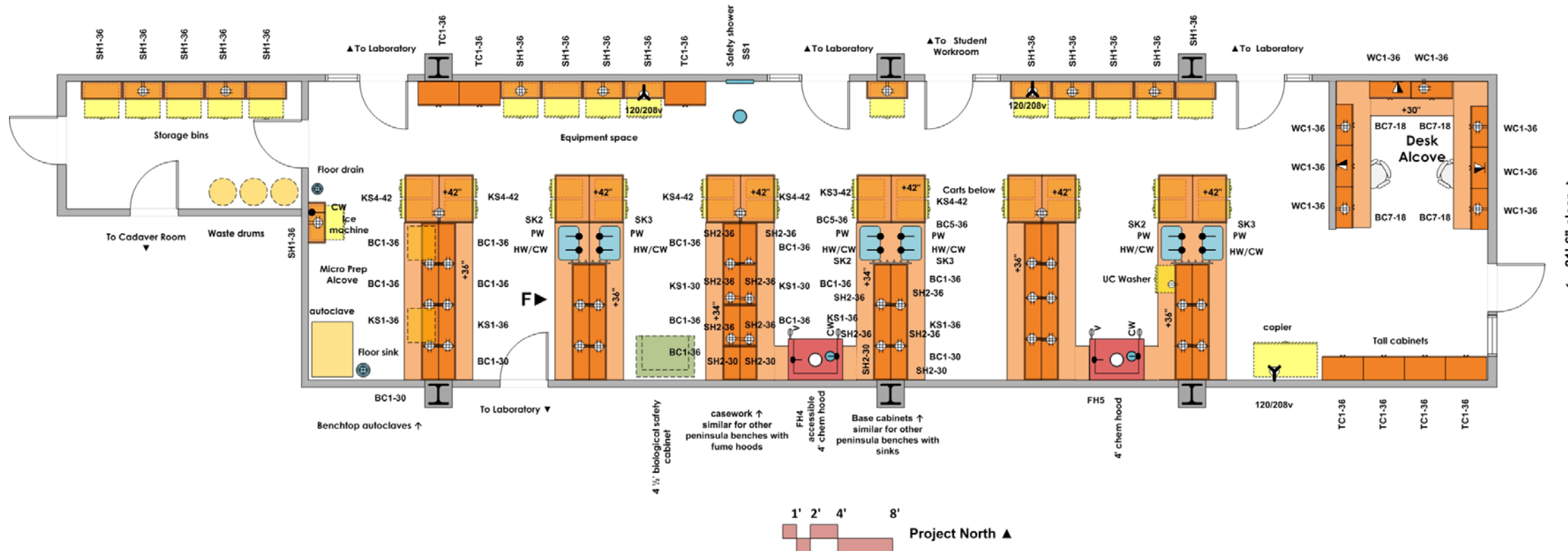
Hot/Cold water at sinks with vacuum breakers  
 Cold water at fume hoods with vacuum breaker  
 Vacuum at fume hoods  
 Pure Water at sinks  
 Tempered domestic water at safety shower/eyewash  
 Capped floor drain below safety shower  
 Floor sink at autoclave  
 Floor drain at ice machine

## CONTRACTOR FURNISHED EQUIPMENT

(2) Chemical Fume Hoods (VAV)  
 Wood casework; Resin tops and sinks  
 Undercounter washer  
 Faucets & fittings  
 Chemical storage cabinets below fume hood  
 Autoclave

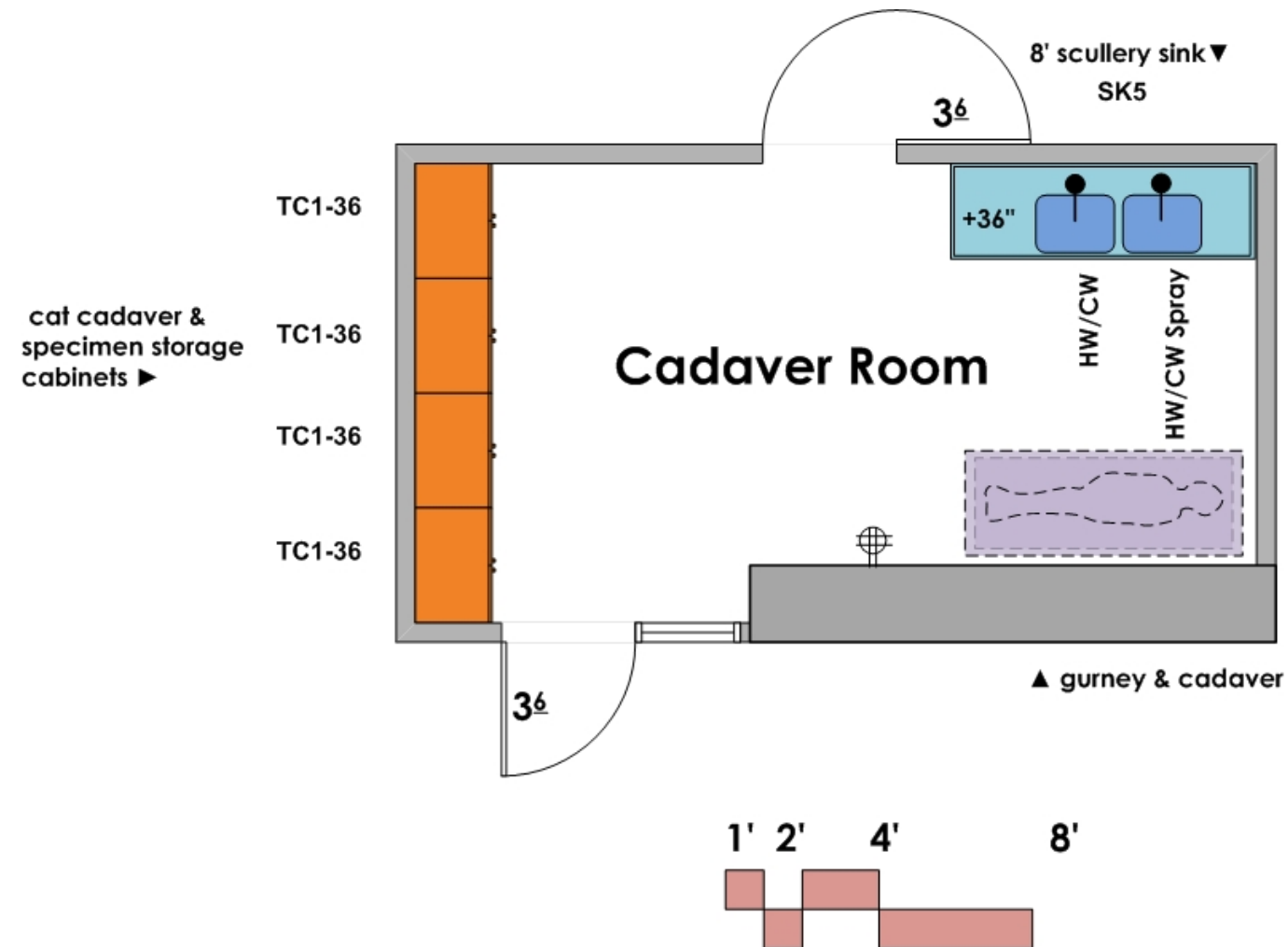
## COLLEGE FURNISHED EQUIPMENT

Copier  
 Benchtop analytical instruments  
 Refrigerators; Ice machine  
 Biological Safety Cabinet Class II Type A





# CADAVER ROOM 107



## ARCHITECTURAL

Occupancy: B  
 Floor: epoxy with integral base  
 Walls: gypsum board and epoxy paint  
 Ceiling: 9' minimum mylar tile  
 Doors: 3' interior & exterior  
 Acoustic Attenuation: NC 40 or less  
 Vibration Attenuation: 4000 microinches or less  
 Light Attenuation: Blinds at window  
 Accessibility: scullery sink

## MECHANICAL

Hours of operation: 6 am to 10 pm  
 Temperature: 68-72 deg. F, +/- 2 deg. F  
 100% exhaust- no recirculation of air  
 Exhaust on emergency power supply  
 (9) air changes per hour occupied  
 (4) air changes per hour unoccupied  
 Provide night set back to (4) air changes per hour from 10 pm to 6 am  
 Provide low exhaust at north and south walls @ 100 c.f.m. per exhaust location in addition to ceiling exhaust  
 Pressure: Negative  
 Humidity: Ambient

## ELECTRICAL

110v fourplex outlet  
 120/208v outlet  
 Lighting: indirect fluorescent @ 75 f.c.

## PLUMBING

Hot/Cold water at sink with vacuum breakers  
 Hot/Cold water spray at sink

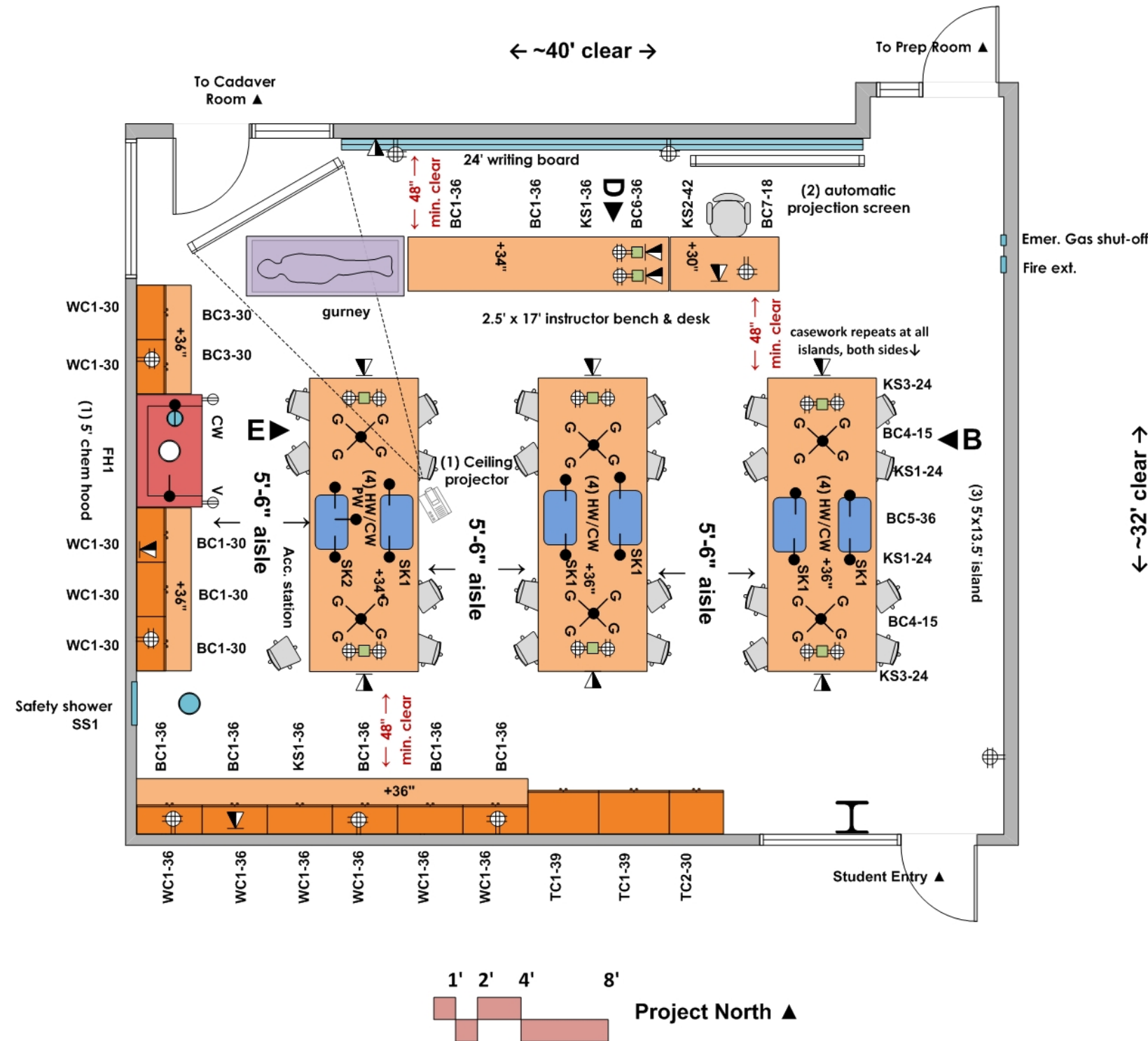
## CONTRACTOR FURNISHED EQUIPMENT

Phenolic resin casework- no wood in this room  
 Stainless steel scullery sink

## COLLEGE FURNISHED EQUIPMENT

Cadaver & Gurney

# BIOLOGY/ANATOMY LAB 108



## ARCHITECTURAL

B Occupancy  
 Floor: rubber tile & base  
 Walls: gypsum board and enamel paint  
 Ceiling: 10' acoustic tile  
 Doors: 3'x8'  
 Acoustic Attenuation: NC 40 or less  
 Vibration Attenuation: 4000 microinches or less  
 Light Attenuation: Blackout blinds at windows  
 Accessibility: (1) fume hood, (1) student island, and instructor bench

## MECHANICAL

Hours of operation: 6 am to 10 pm  
 Temperature: 68-72 deg. F, +/- 2 deg. F  
 100% exhaust- no recirculation of air  
 Exhaust on emergency power supply  
 (12) air changes per hour occupied  
 (4) air changes per hour unoccupied  
 Provide night set back to (4) air changes per hour from 10 pm to 6 am  
 Pressure: Negative  
 Fume Hood Exhaust: 600 cfm at 18" sash opening  
 Low exhaust at left and right side of writing board wall:  
 400 cfm at each point  
 General room exhaust at ceiling: 900 cfm  
 Humidity: Ambient

## ELECTRICAL

110v fourplex and duplex outlets  
 Standby power at equipment space  
 Data junction boxes at perimeter and islands as noted  
 Lighting: indirect fluorescent @ 75 f.c.

## PLUMBING

Hot/Cold water at sinks with vacuum breakers  
 Cold water at fume hood with vacuum breaker  
 Vacuum at fume hood  
 Pure Water at sinks  
 Gas at islands  
 Tempered domestic water at safety shower/eyewash  
 Capped floor drain below safety shower

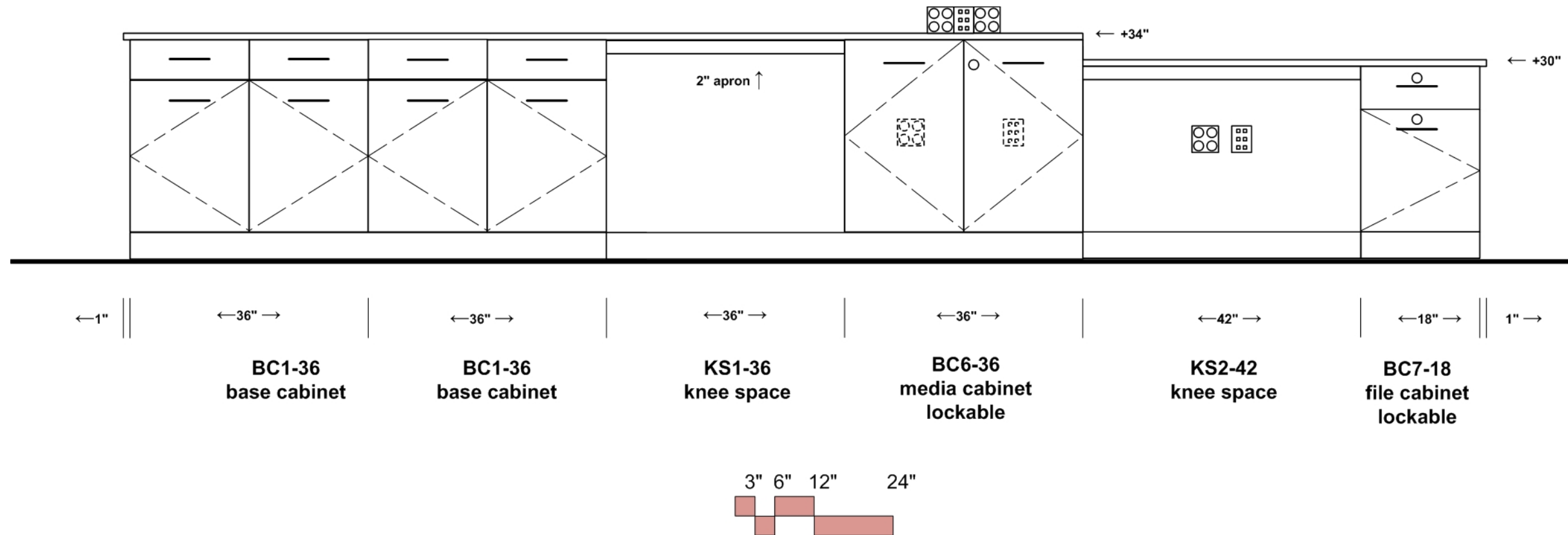
## CONTRACTOR FURNISHED EQUIPMENT

(1) Chemical Fume Hood (VAV)  
 Phenolic resin casework  
 Resin tops and sinks  
 Faucets & fittings  
 Writing board  
 Projection Screens  
 Digital projection system

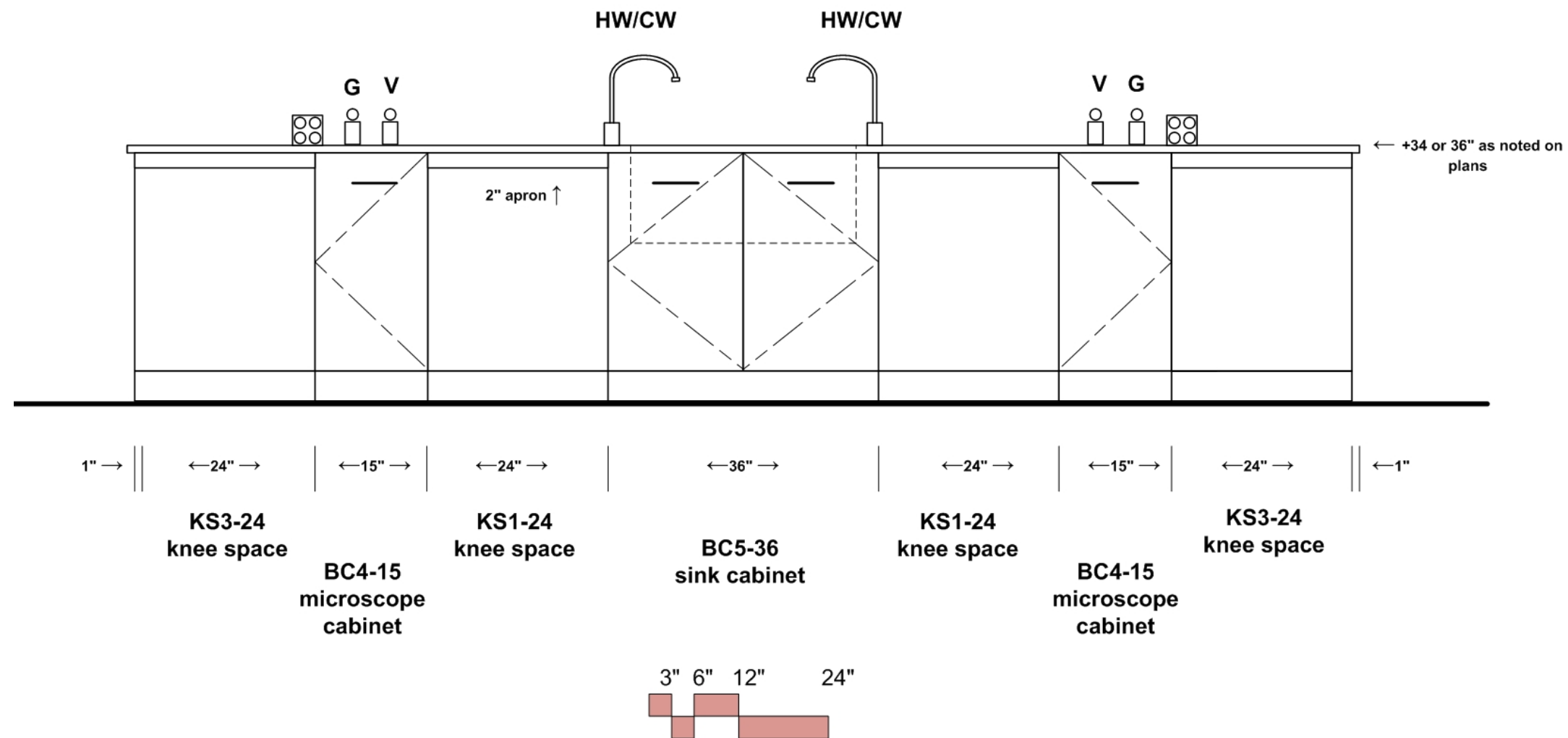
## COLLEGE FURNISHED EQUIPMENT

Chairs; Digital projector  
 Benchtop analytical instruments

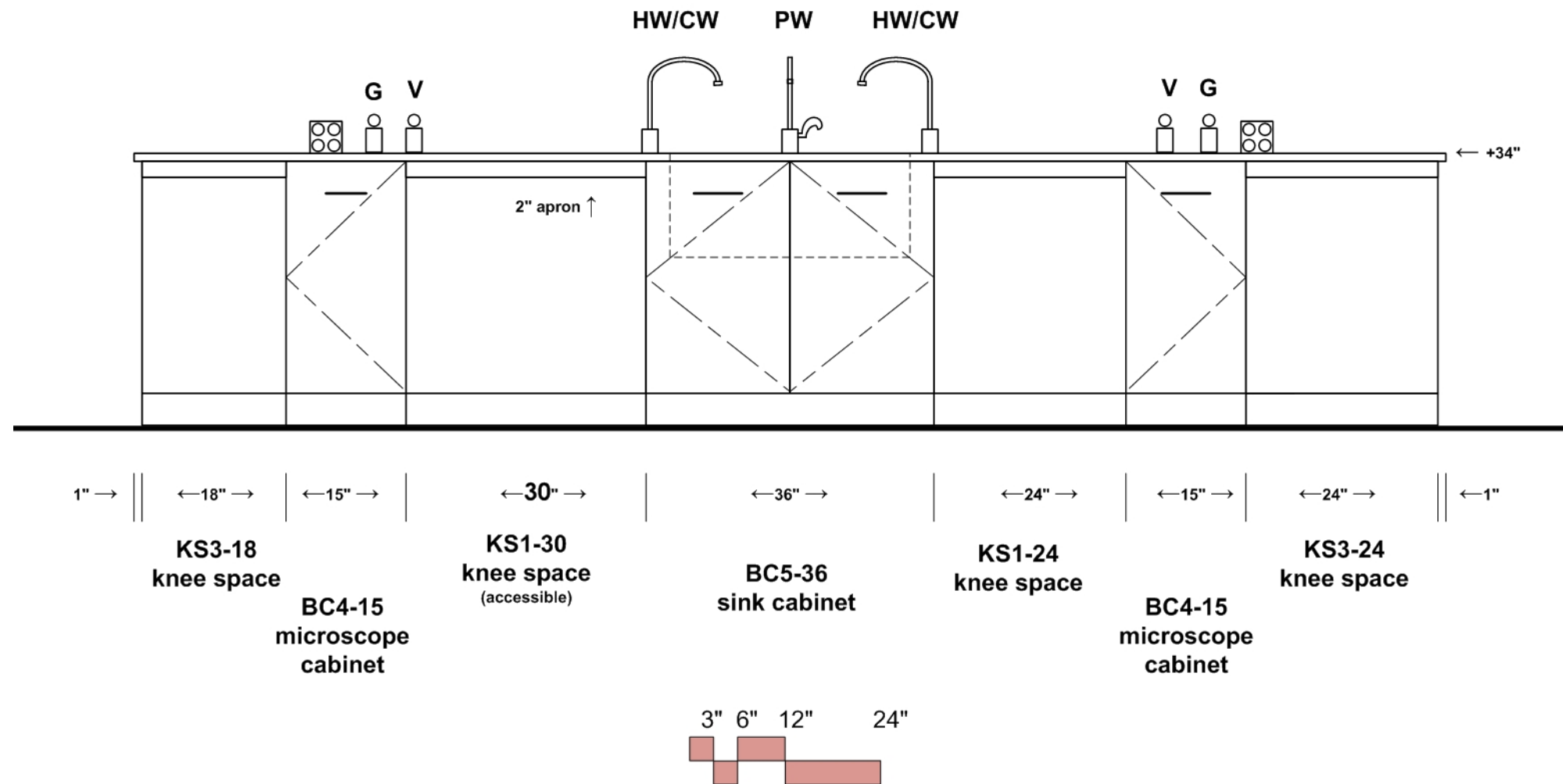
**ELEVATION A  
 DEMO BENCH  
 ZOOLOGY LABS**



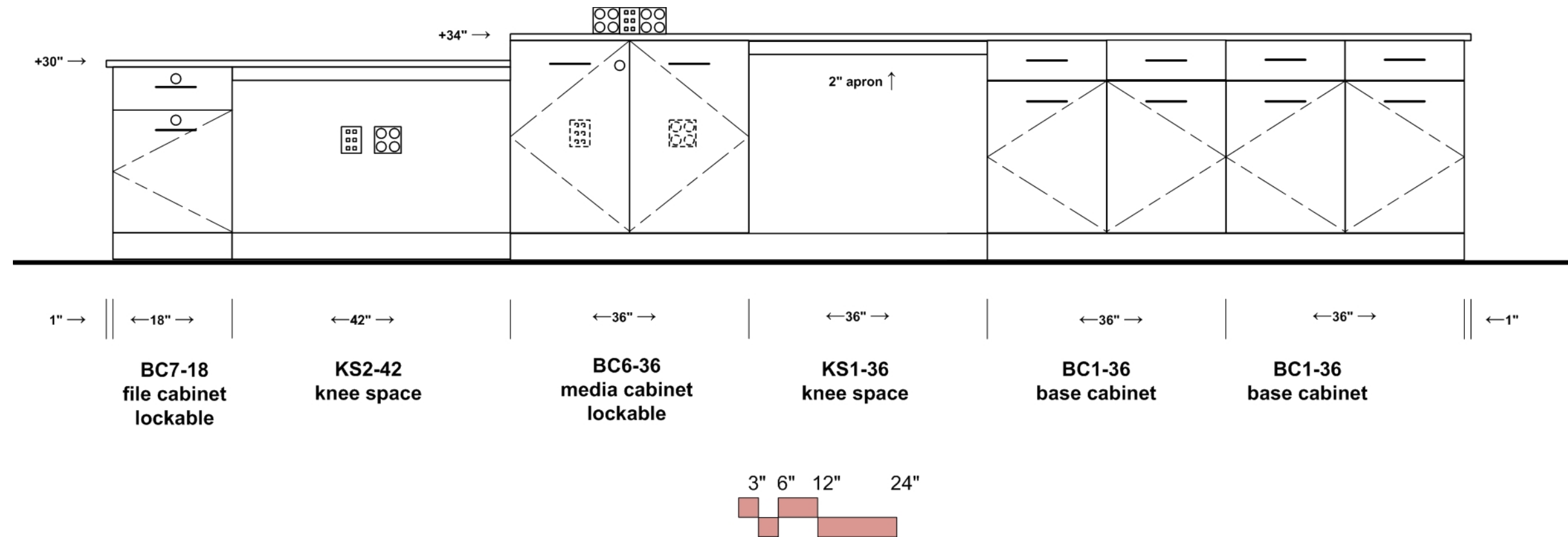
**ELEVATION B  
STUDENT ISLAND BENCH  
BOTANY, MICROBIOLOGY,  
ZOOLOGY & ANATOMY LABS**



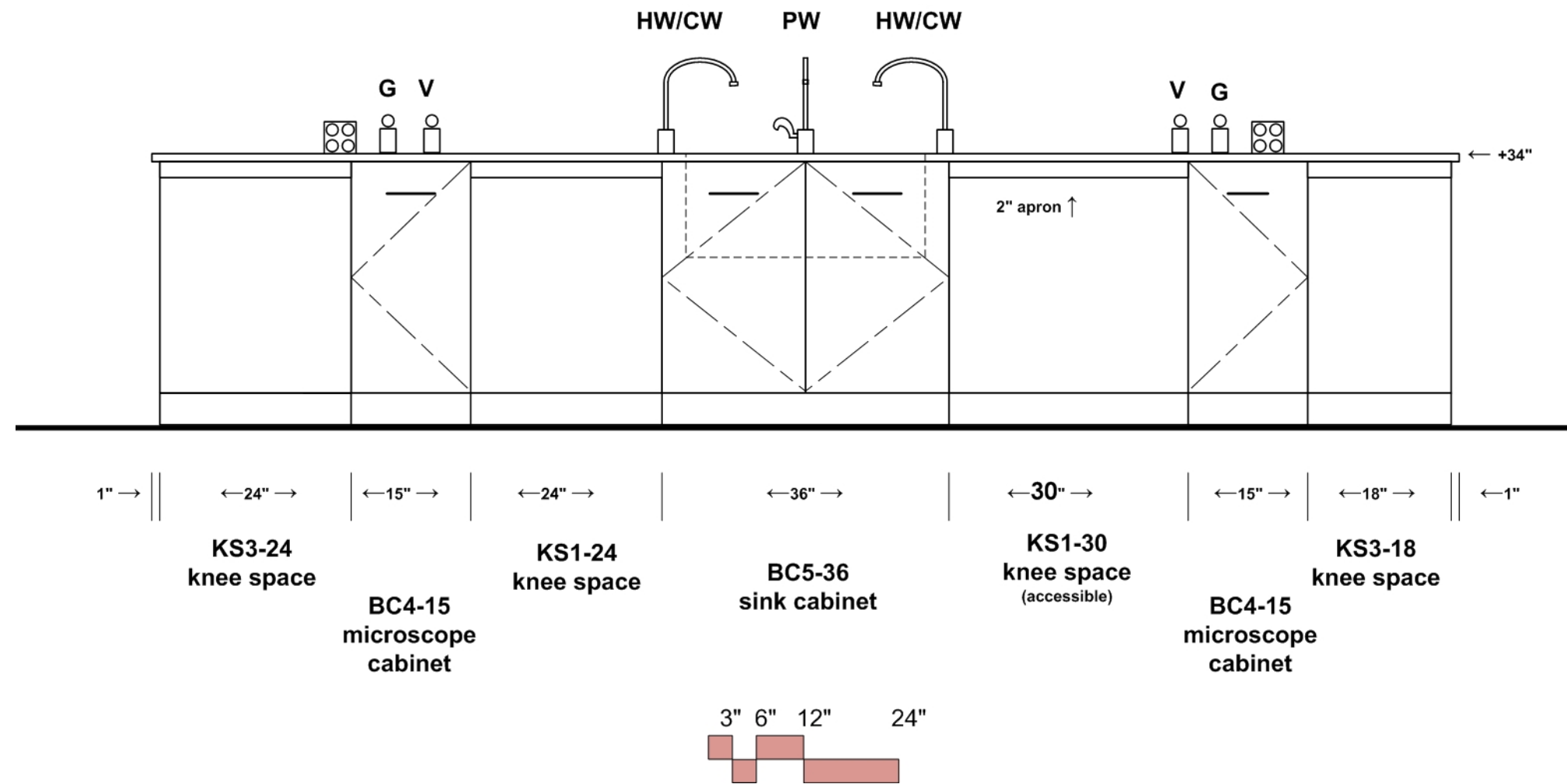
**ELEVATION C  
ACCESSIBLE STUDENT ISLAND  
BENCH  
BOTANY & ZOOLOGY LABS**



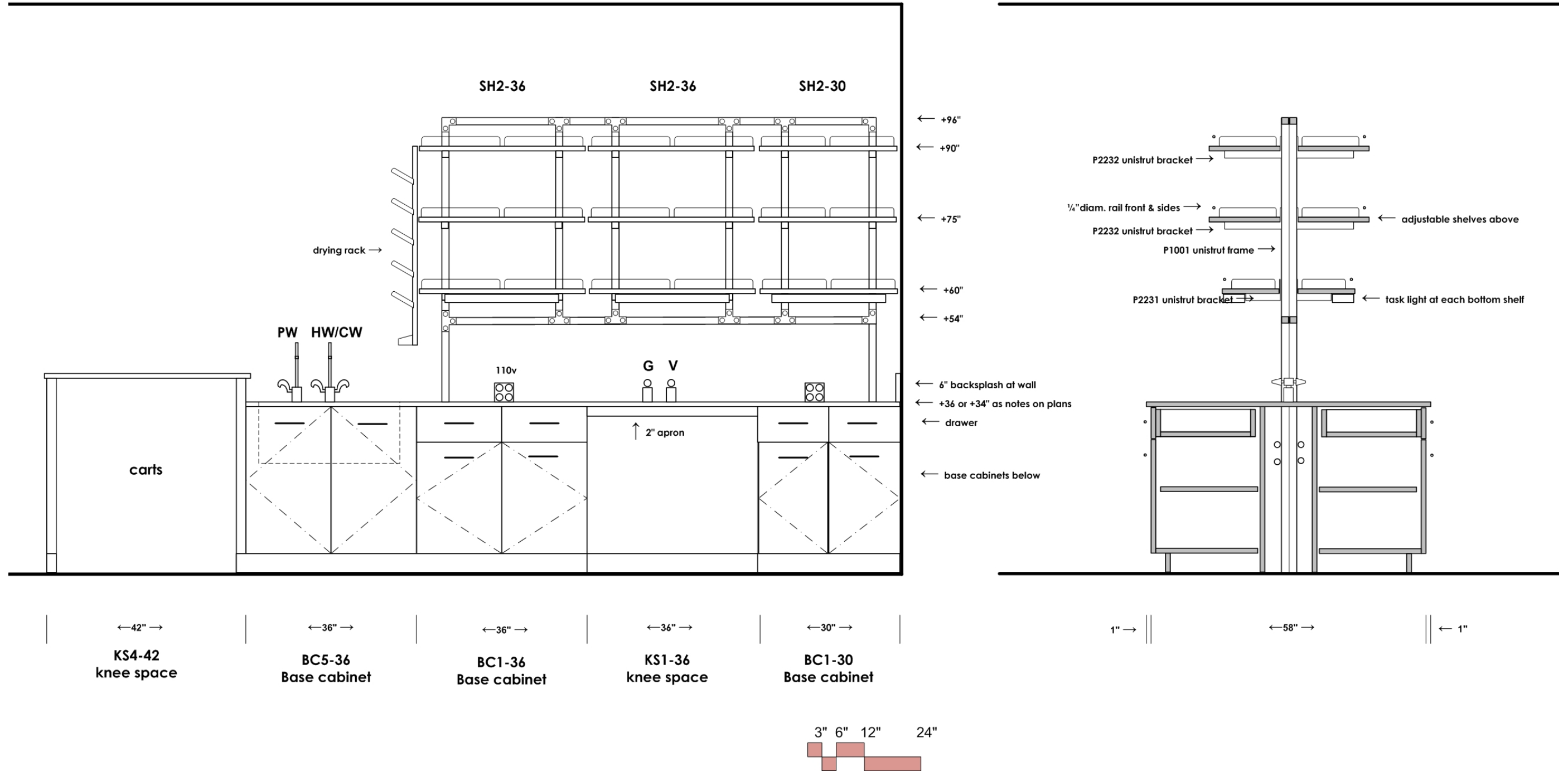
**ELEVATION D  
 DEMO BENCH  
 BOTANY, MICROBIOLOGY &  
 ANATOMY LABS**



**ELEVATION E  
ACCESSIBLE STUDENT ISLAND  
BENCH  
MICROBIOLOGY & ANATOMY  
LABS**

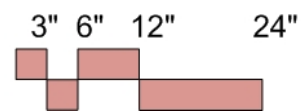
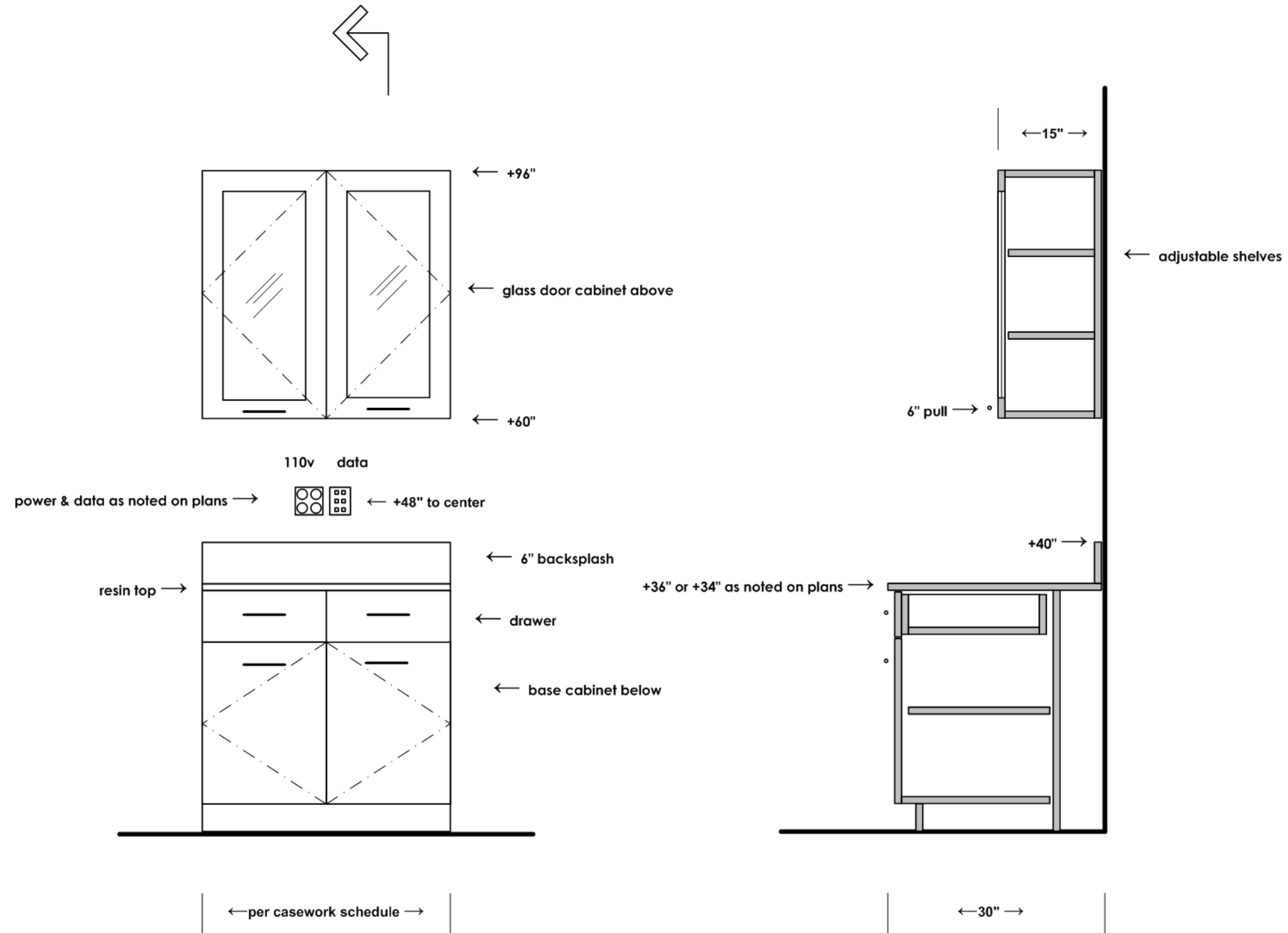


# ELEVATION F PENINSULA BENCH PREP ROOM

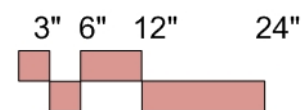
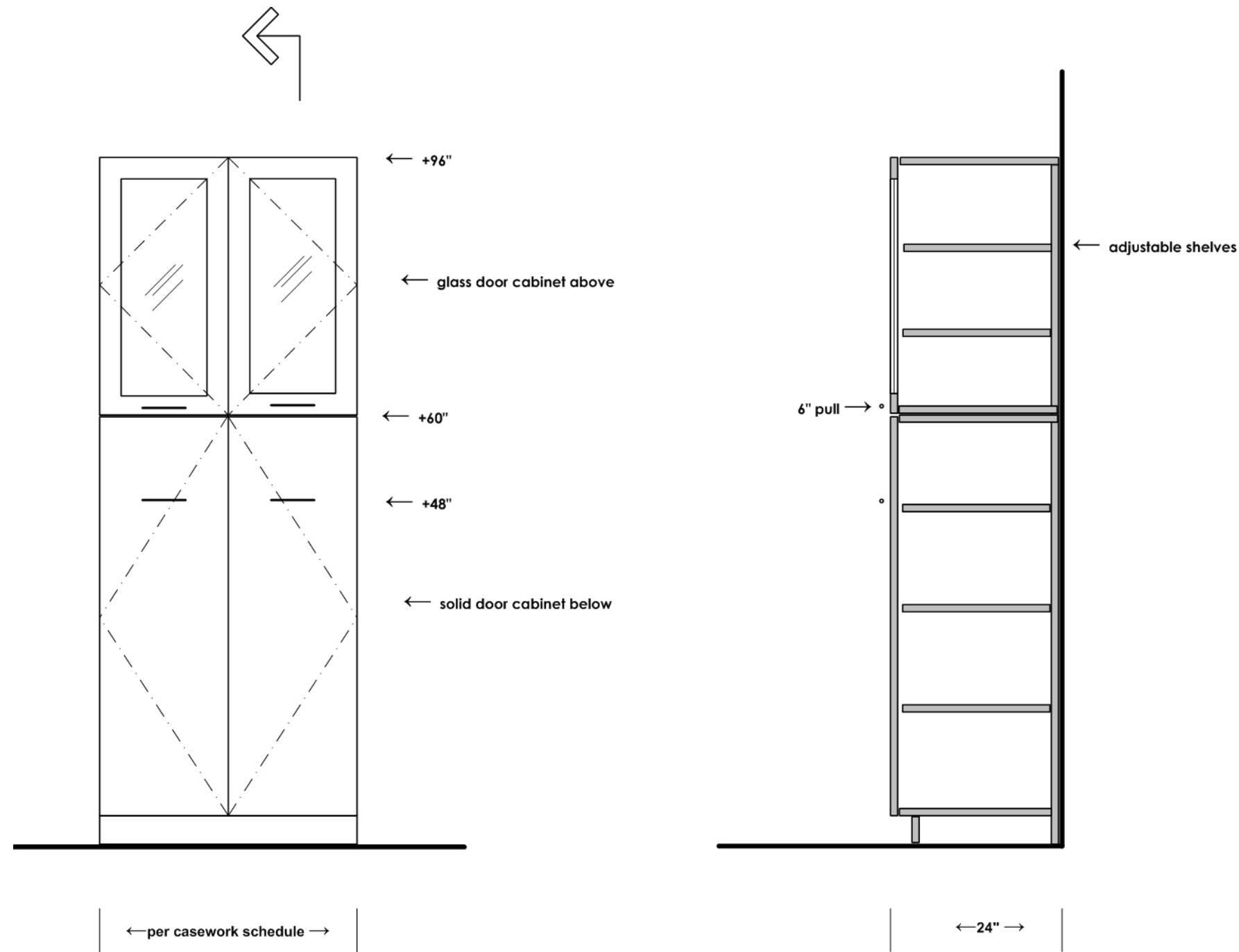




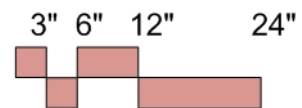
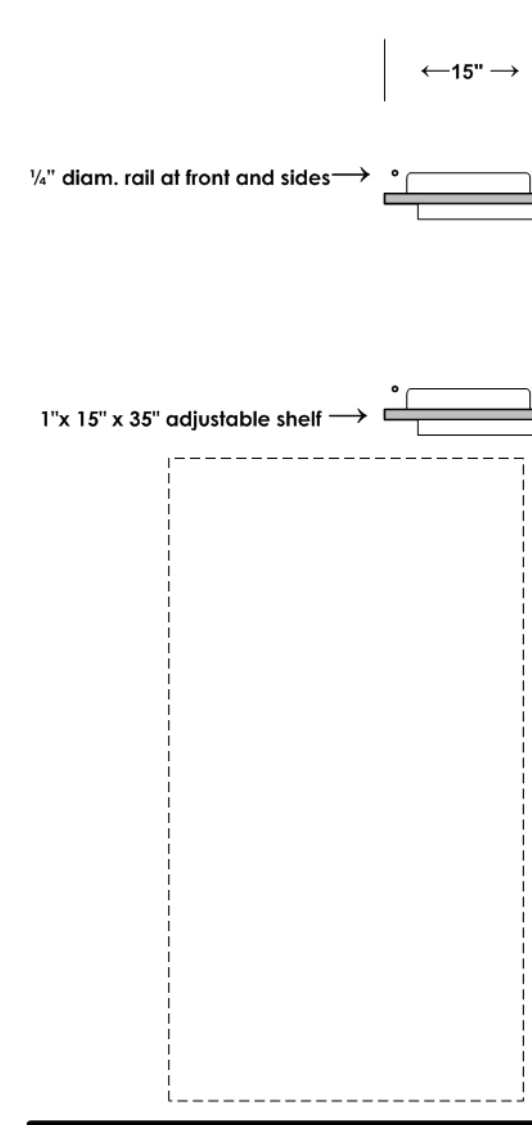
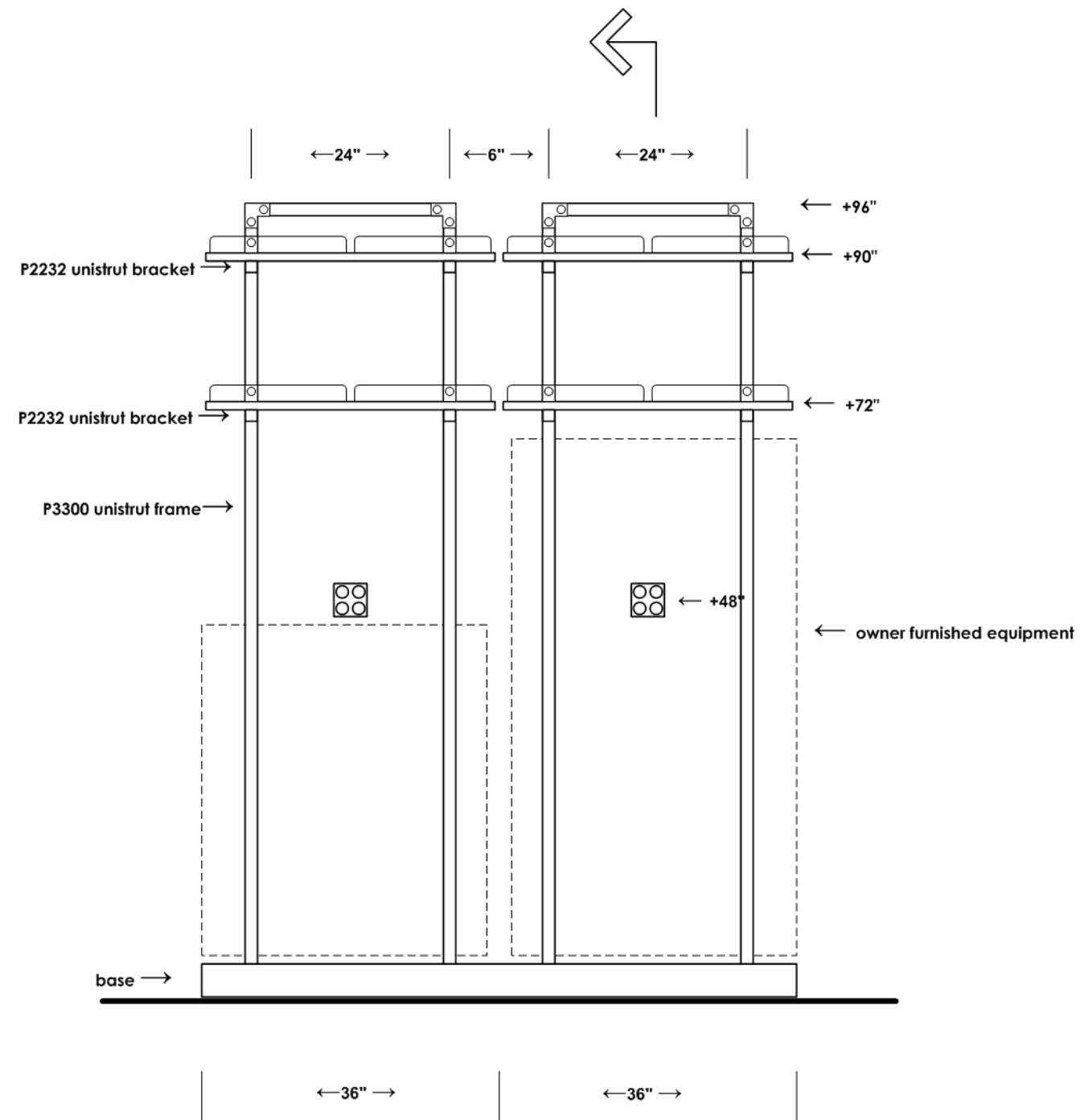
WALL CABINET/BASE CABINET  
ELEVATION/SECTION



**TALL CABINET**  
ELEVATION/SECTION



**SHELF UNIT**  
ELEVATION/SECTION



Designation	Type	Width	Features
<b>BC1</b>	Base Cabinet Type 1	BC1-36: 36" BC1-30: 30"	<ul style="list-style-type: none"> <li>• Drawer/door cabinet</li> <li>• Two 6" drawers above</li> <li>• Double Door cabinet below</li> <li>• One full depth adjustable shelf inside</li> </ul>
<b>BC2</b>	Base Cabinet Type 2	BC2-18: 18"	<ul style="list-style-type: none"> <li>• Single door cabinet</li> <li>• One full depth adjustable shelf inside</li> </ul>
<b>BC3</b>	Base Cabinet Type 3	BC3-30: 30"	<ul style="list-style-type: none"> <li>• Open shelf cabinet for lab coat bins or other storage</li> <li>• Two rows of open shelves</li> <li>• One full depth adjustable shelf</li> </ul>
<b>BC4</b>	Base Cabinet Type 4	BC4-15: 15"	<ul style="list-style-type: none"> <li>• Microscope storage</li> <li>• Single door cabinet</li> <li>• Full width/depth pull-out microscope board inside cabinet at bottom with 100 lb. ball bearing glide and 6" pull handle</li> </ul>
<b>BC5</b>	Base Cabinet Type 5	BC5-36: 36" BC5-42: 42"	<ul style="list-style-type: none"> <li>• Sink cabinet</li> <li>• Full height doors</li> <li>• Open to floor inside cabinet</li> <li>• Finish floor inside cabinet</li> <li>• No toe kick panel</li> </ul>
<b>BC6</b>	Base Cabinet Type 6	BC6-36: 36"	<ul style="list-style-type: none"> <li>• Media cabinet</li> <li>• Full retractable doors with ball bearing glides</li> <li>• Lockable</li> </ul>
<b>BC7</b>	Base Cabinet Type 7	BC7-18: 18"	<ul style="list-style-type: none"> <li>• File cabinet</li> <li>• 5" drawer above</li> <li>• 20" file drawer below</li> <li>• Lockable</li> <li>• Accommodates Pendaflex file system</li> </ul>
<b>WC1</b>	Wall Cabinet Type 1	WC1-36: 36" WC1-30: 30"	<ul style="list-style-type: none"> <li>• Wall cabinet</li> <li>• Framed glass doors</li> <li>• Lockable</li> <li>• 36" height</li> <li>• Bottom of cabinet at 60" above floor</li> </ul>
<b>TC1</b>	Tall Cabinet Type 1	TC1-36: 36" TC1-39: 39"	<ul style="list-style-type: none"> <li>• Tall cabinet for microscope and/or general storage</li> <li>• Framed glass doors at doors above</li> <li>• Solid doors at doors below</li> <li>• Top section 36" height</li> <li>• Bottom section 60" height including toe kick</li> <li>• Top doors to be lockable</li> </ul>

**CASEWORK SCHEDULE**  
CONTINUED

Designation	Type	Width	Features
<b>TC2</b>	Tall Cabinet Type 2	TC2-30: 30"	<ul style="list-style-type: none"> <li>• Tall cabinet for skeleton model storage</li> <li>• Double framed glass doors</li> <li>• Lockable</li> <li>• 84" height</li> </ul>
<b>KS1</b>	Knee Space Type 1	KS1-24: 24" KS1-30: 30" KS1-36: 36"	<ul style="list-style-type: none"> <li>• Knee space</li> <li>• 2" apron at front</li> <li>• Removable back panel</li> </ul>
<b>KS2</b>	Knee Space Type 2	KS2-42: 42"	<ul style="list-style-type: none"> <li>• Knee space</li> <li>• 2" apron at front</li> <li>• Data and power at back panel</li> <li>• Removable back panel</li> </ul>
<b>KS3</b>	Knee Space Type 3	KS3-18: 18" KS3-24: 24"	<ul style="list-style-type: none"> <li>• Knee space</li> <li>• 2" apron at front</li> <li>• Open at front and side at end of island bench</li> </ul>
<b>KS4</b>	Knee Space Type 4	KS4-42: 42"	<ul style="list-style-type: none"> <li>• Knee space</li> <li>• For carts</li> <li>• No apron</li> <li>• Fixed panel at rear</li> </ul>
<b>SH1</b>	Shelf Unit Type 1	SH1-36: 35"	<ul style="list-style-type: none"> <li>• Two rows adjustable shelves on wall unistrut</li> <li>• Shelf dimensions: 1"x15"x35"</li> <li>• space below shelves for owner furnished equipment</li> </ul>
<b>SH2</b>	Shelf Unit Type 2	SH2-36: 35" SH2-30: 29"	<ul style="list-style-type: none"> <li>• Three rows adjustable shelves on island unistrut</li> <li>• Top two rows shelf dimensions: 1"x15"x35" or 1"x15"x35"</li> <li>• Bottom row shelf dimensions: 1"x12"x35" or 1"x12"x29"</li> </ul>

## SINK SCHEDULE

Designation	Type	Dimensions	Features
<b>SK1</b>	Sink Type 1	30" length 16" width 17.8" depth	<ul style="list-style-type: none"> <li>• Epoxy resin</li> <li>• recessed drop-in mount</li> <li>• Fittings: Hot/Cold Water deck mount at each side of sink</li> </ul>
<b>SK2</b>	Sink Type 2	30" length 16" width 17.8" depth	<ul style="list-style-type: none"> <li>• Epoxy resin</li> <li>• recessed drop-in mount</li> <li>• Fittings: Hot/Cold Water deck mount at each side of sink; Pure Water deck mount at center of sink</li> </ul>
<b>SK3</b>	Sink Type 3	28" length 15" width 11.8" depth	<ul style="list-style-type: none"> <li>• Epoxy resin</li> <li>• recessed drop-in mount</li> <li>• Fittings: Hot/Cold Water deck mount; Pure Water deck mount</li> </ul>
<b>SK4</b>	Sink Type 4	24" length 18" width 11" depth	<ul style="list-style-type: none"> <li>• Epoxy resin</li> <li>• recessed drop-in mount</li> <li>• Fittings: Hot/Cold Water deck mount; Pure Water deck mount</li> </ul>
<b>SK5</b>	Sink Type 5	Overall: 96" length 24" width 34" height  Each sink: 24" length 18" width 18" depth	<ul style="list-style-type: none"> <li>• 304 stainless steel scullery sink</li> <li>• Fittings: Hot/Cold Water panel mount; Hot/Cold water panel mount spray</li> </ul>

## FUME HOOD SCHEDULE

Designation	Type	Dimensions	Features
<b>FH1</b>	Fume Hood Type 1 Accessible	60" length	<ul style="list-style-type: none"> <li>• Constant Volume</li> <li>• Face velocity: 100 f.p.m.</li> <li>• Exhaust: 650 c.f.m.</li> <li>• Liner: Polyresin</li> <li>• Prewired and preplumbed</li> <li>• Fixed baffle</li> <li>• Work surface height: 34"</li> <li>• 36" wide knee space below, centered</li> <li>• 12" base cabinet on left and right sides</li> <li>• Fittings: Cold water, vacuum</li> </ul>
<b>FH2</b>	Fume Hood Type 2 Accessible	72" length	<ul style="list-style-type: none"> <li>• Constant Volume (two position with night set back)</li> <li>• Face velocity: 100 f.p.m.</li> <li>• Exhaust: 750 c.f.m.</li> <li>• Liner: Polyresin</li> <li>• Prewired and preplumbed</li> <li>• Fixed baffle</li> <li>• Work surface height: 34"</li> <li>• 36" wide knee space below, centered</li> <li>• 18" base cabinet on left and right sides</li> <li>• Fittings: Cold water, vacuum</li> </ul>
<b>FH3</b>	Fume Hood Type 3 Standard	60" length	<ul style="list-style-type: none"> <li>• Constant Volume (two position with night set back)</li> <li>• Face velocity: 100 f.p.m.</li> <li>• Exhaust: 650 c.f.m.</li> <li>• Liner: Polyresin</li> <li>• Prewired and preplumbed</li> <li>• Fixed baffle</li> <li>• Work surface height: 36"</li> <li>• 12" wide cup sink base cabinet</li> <li>• 30" wide flammable base cabinet (not vented)</li> <li>• 30" wide corrosive base cabinet (vented)</li> <li>• Fittings: Cold water, vacuum</li> </ul>
<b>FH4</b>	Fume Hood Type 4 Accessible	48" length	<ul style="list-style-type: none"> <li>• Constant Volume (two position with night set back)</li> <li>• Face velocity: 100 f.p.m.</li> <li>• Exhaust: 450 c.f.m.</li> <li>• Liner: Polyresin</li> <li>• Prewired and preplumbed</li> <li>• Fixed baffle</li> <li>• Work surface height: 34"</li> <li>• 36" wide knee space below, centered</li> <li>• 18" base cabinet on left and right sides</li> <li>• Fittings: Cold water, vacuum</li> </ul>

# FUME HOOD SCHEDULE

CONTINUED

Designation	Type	Dimensions	Features
FH5	Fume Hood Type 5 Standard	48" length	<ul style="list-style-type: none"><li>• Constant Volume (two position with night set back)</li><li>• Face velocity: 100 f.p.m.</li><li>• Exhaust: 450 c.f.m.</li><li>• Liner: Polyresin</li><li>• Prewired and preplumbed</li><li>• Fixed baffle</li><li>• Work surface height: 36"</li><li>• 36" wide corrosive base cabinet (vented)</li><li>• 12" cup sink base cabinet</li><li>• Fittings: Cold water, vacuum</li></ul>



Protector® XStream® Laboratory Hoods



Protector XStream Laboratory Hood 9840600 is shown with Spill Stopper Work Surface 9849800, Protector Acid Storage Cabinet 9901100 and Protector Standard Storage Cabinet 9900100. Blower, ductwork, work surface and base cabinets must be ordered separately.

All models conform to the following regulations and standards:

- SEFA 1-2002
- NFPA 45-2000
- ASTM E84-01
- ASHRAE 110-95
- ANSI Z9.5-1993
- UL 3101-1/61010-1
- CAN/CSA C22.2 No. 1010.1
- UL 1805
- CE Conformity Marking (230 volt models)†

Fixed models feature:

- Two pre-plumbed service fixtures with forged brass valves, lower right side with brass tubing for gas and lower left side with copper tubing for cold water. Components for converting either or both fixtures to air and vacuum are provided. **Inlet tubing is not provided.**
- One pre-wired 115 volt, 20 amp electrical duplex receptacle on lower right side.

All models require (not included):

- **Remote Blower.** See back pocket.
- **Ductwork.** See back pocket.
- **Work Surface.** See pages 92-95.
- **Base Cabinet or Stand.** See pages 96-106.

Optional accessories for on-site installation include:

- **Service Fixture Kits.** See page 107.
- **Electrical Duplex Kits.** See page 108.
- **Guardian Jr. and Digital Airflow Monitor Kits.** See page 108.
- **Distillation Grid Kits.** See page 110.
- **Sash Stop Kits.** See page 108.
- **Snuffer Fire Extinguishers.** See page 110.
- **Ceiling Enclosure and Rear Finish Panel Kits.** See page 109.

† U.S. Patent No. 6,461,223 pending

‡ Height of switches, electrical receptacle and service fixtures meet requirements of ADA.

§ Exclusive Feature

All models feature:

- Modified by-pass airflow design.
- Ergonomic air foil with aerodynamic Clean-Sweep® airflow openings.
- Upper Dilution Air Supply.\*
- Glacier white, dry powder epoxy-coated steel exterior.
- Chemical-resistant, fiberglass-reinforced, composite panel liner and pre-set Rear Downflow Dual Baffle System\* with flame spread less than 25 per ASTM E-84
- 3/16" thick tempered safety glass vertical-rising sash with epoxy-coated aluminum sash handle with large radius and perforations.\*

- Removable front and side panels and front and interior service access panels for access to plumbing and electrical wiring.
- Pre-wired T8 fluorescent lighting, ADA-compliant light and blower switches for 115 volt, 60 Hz operation.
- Sash stop located at 18" sash opening position.
- Epoxy-coated stainless steel, 12.81" ID exhaust connection(s).

Contact Labconco at 800-821-5525 or 816-333-8811 for ordering information on explosion-proof lighting and other sash configurations and for blower sizing assistance.

Ordering Information

Protector® XStream® Laboratory Hoods

ASHRAE 110-95 tests show less than 0.05 ppm leak rate when tested at 4.0 fpm; at OSHA-approved 60, 80, and 100 fpm face velocity and sash positions of 18" and 28". To ensure performance at 60 fpm, Labconco engineers challenged the Protector XStream Hood at less

than ideal conditions such as 30 fpm cross drafts, modified ASHRAE test procedures and average face velocities lower than 60 fpm. Contact Labconco for a technical paper with complete ASHRAE test data.

Total Exhaust CFM and Static Pressure @ 18" Sash Opening (60% open)

Nominal Width	CFM Savings at 60 fpm vs. 100 fpm						Total Average Annual Dollar Savings at 60 fpm vs. 100 fpm*
	100 fpm	s.p.	80 fpm	s.p.	60 fpm	s.p.	
4 feet	470	0.11"	380	0.07"	280	0.04"	\$760
5 feet	610	0.13"	490	0.08"	370	0.05"	\$960
6 feet	750	0.15"	600	0.10"	450	0.06"	\$1,200
8 feet	1060	0.12"	850	0.08"	640	0.04"	\$1,680

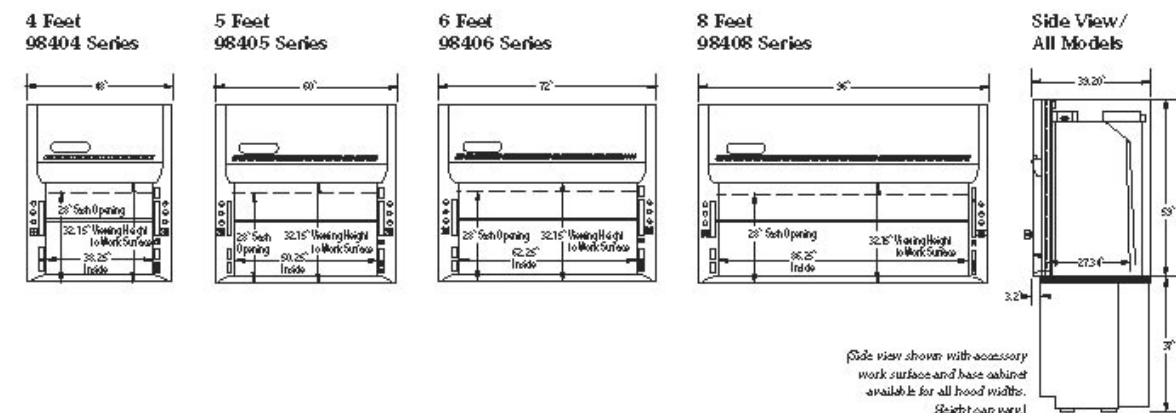
Total Exhaust CFM and Static Pressure @ 28" Sash Opening (100% open)

Nominal Width	CFM Savings at 60 fpm vs. 100 fpm						Total Average Annual Dollar Savings at 60 fpm vs. 100 fpm*
	100 fpm	s.p.	80 fpm	s.p.	60 fpm	s.p.	
4 feet	730	0.25"	590	0.13"	440	0.08"	\$1,160
5 feet	960	0.30"	770	0.19"	580	0.11"	\$1,520
6 feet	1180	0.36"	940	0.23"	710	0.13"	\$1,880
8 feet	1660	0.28"	1,330	0.18"	1,000	0.10"	\$2,640

\*Based on average annual dollars per CFM usage of \$4.00; fume hood operating 24 hours a day and 5 days per week (6240 hours per year).

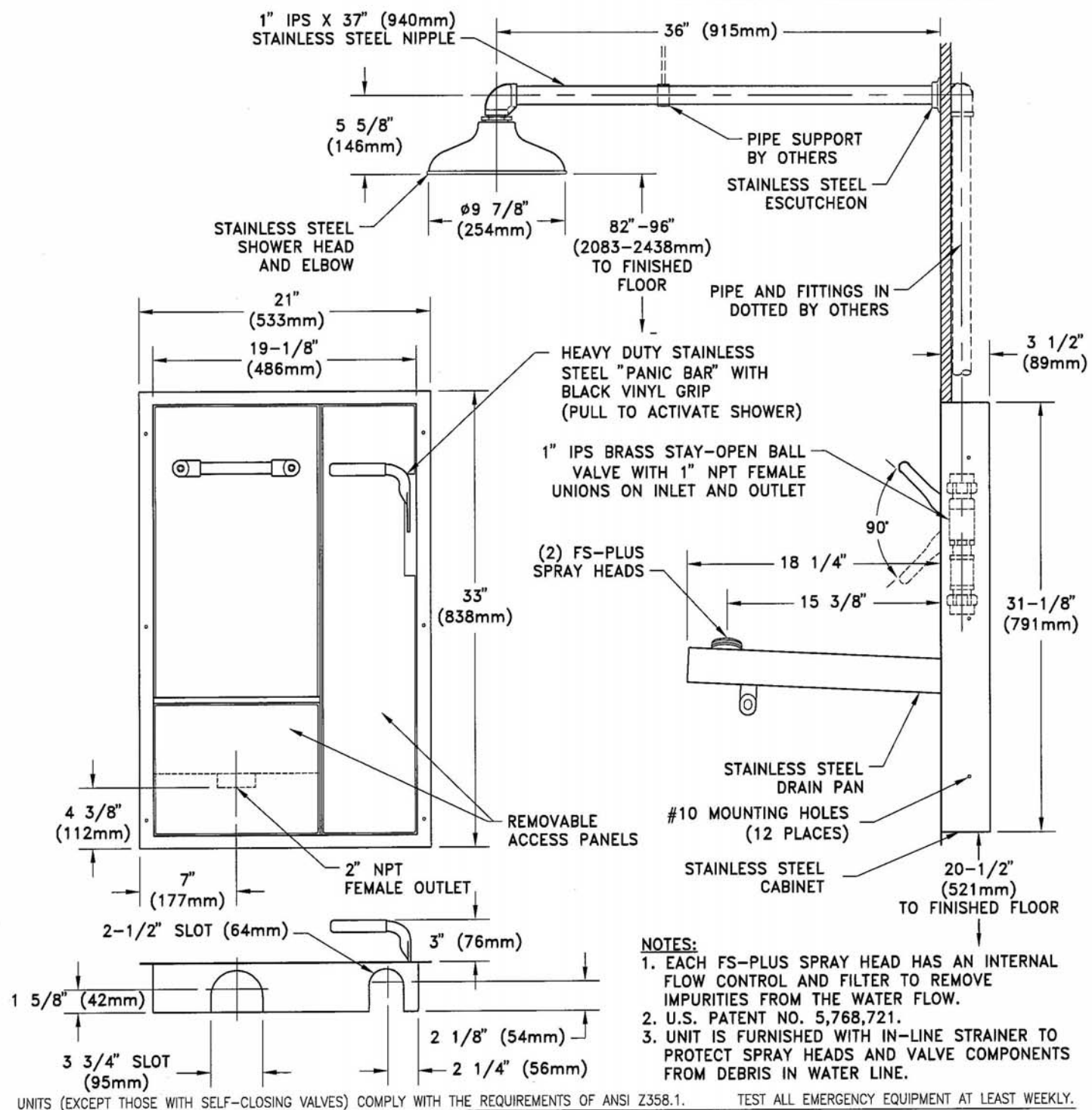
Catalog Number	Nominal Width	Electrical Requirements	Exterior Depth	Interior Working Depth	Fluorescent Lamps	Service Fixtures	Electrical Duplex	Exhaust Collar(s)	Shipping Wt. lbs./kg
9840400	4 feet	115 volts, 60 Hz	39.20"	27.3"	(2) 25 watt	None	None	12.81" ID	400/181
9840401	4 feet	115 volts, 60 Hz	39.20"	27.3"	(2) 25 watt	2	1	12.81" ID	400/181
9840402**	4 feet	230 volts, 50 Hz	39.20"	27.3"	(2) 25 watt	None	None	12.81" ID	400/181
9840403**	4 feet	230 volts, 50 Hz	39.20"	27.3"	(2) 25 watt	2	None	12.81" ID	400/181
9840500	5 feet	115 volts, 60 Hz	39.20"	27.3"	(2) 32 watt	None	None	12.81" ID	460/209
9840501	5 feet	115 volts, 60 Hz	39.20"	27.3"	(2) 32 watt	2	1	12.81" ID	460/209
9840502**	5 feet	230 volts, 50 Hz	39.20"	27.3"	(2) 32 watt	None	None	12.81" ID	460/209
9840503**	5 feet	230 volts, 50 Hz	39.20"	27.3"	(2) 32 watt	2	None	12.81" ID	460/209
9840600	6 feet	115 volts, 60 Hz	39.20"	27.3"	(2) 32 watt	None	None	12.81" ID	520/236
9840601	6 feet	115 volts, 60 Hz	39.20"	27.3"	(2) 32 watt	2	1	12.81" ID	520/236
9840602**	6 feet	230 volts, 50 Hz	39.20"	27.3"	(2) 32 watt	None	None	12.81" ID	520/236
9840603**	6 feet	230 volts, 50 Hz	39.20"	27.3"	(2) 32 watt	2	None	12.81" ID	520/236
9840800	8 feet	115 volts, 60 Hz	39.20"	27.3"	(4) 25 watt	None	None	(2) 12.81" ID	700/318
9840801	8 feet	115 volts, 60 Hz	39.20"	27.3"	(4) 25 watt	2	1	(2) 12.81" ID	700/318
9840802**	8 feet	230 volts, 50 Hz	39.20"	27.3"	(4) 25 watt	None	None	(2) 12.81" ID	700/318
9840803**	8 feet	230 volts, 50 Hz	39.20"	27.3"	(4) 25 watt	2	None	(2) 12.81" ID	700/318

\*\*International electrical configuration



Side view shown with accessory work surface and base cabinet available for all hood widths. (Height can vary)

**SSBF2170**  
 RECESSED SAFETY STATION WITH DRAIN PAN



**DROPIN SINKS**

**DropIn Sinks**



DropIn Sinks were introduced by Laboratory Tops, Inc. in 1992. This design has quickly become the industry standard due to the ease of installation and the added safety they can bring to the lab. DropIn sinks are top mounted. This simplified method of installation seals the sink cutout and eliminates the worksurface overhang between the inner walls of undermount sink basins and the sink cutout which can gather residual chemicals and bacteria. All DropIn Sink surfaces are clearly visible and radiused for ease of cleaning.

Laboratory Tops offers the greatest number of epoxy resin top-mounted DropIn Sink sizes in the industry.

**Double DropIn Sinks**

When there is a need for a double sink configuration, a pair of DropIn Sinks is far less expensive and easier to install than glued-together undermount pairs. Double DropIns require a 1" [25mm] worksurface strip between the two installed sinks.



Classic DrainTops are an excellent platform for Double DropIn sink placement. Dual drain board DrainTops have an 18" x 30" [457mm x 762mm] or a 20" x 38" [508mm x 965mm] flat space for sink placement. Single drain board models feature a 20" x 38" [508mm x 965mm] sink space.

**SolTra Outlets for DropIn Sinks & Troughs**

SolTra are the patented outlets for LabTops DropIn Sinks are engineered to facilitate sink drainage and accommodate a removable #304 stainless steel solids trap basket with foldaway handle. SolTra Overflows and Basket Strainers will not fit our undermount SO3 sink opening.

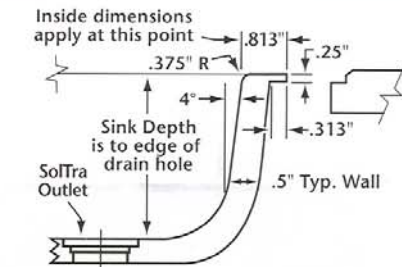
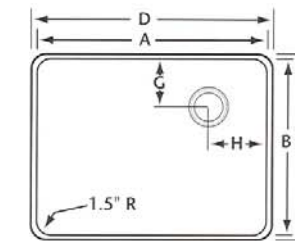
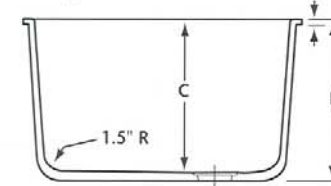


Dimensions (in)				Part No.	Description	Dimensions (mm)		
Inside Pipe Outlet Diameter	Outside Rim Diameter	Length	Inside Pipe Outlet Diameter			Outside Rim Diameter	Length	
<b>Epoxy Resin</b>								
1.9	3.5	4.3	T05*	SolTra Sink Outlet*	48	89	109	
<b>Polypropylene</b>								
1.9	3.5	4.3	PT05*	SolTra Sink Outlet*	48	89	109	
-	1.9	-	PTS3	SolTra Sink Stopper	-	48	-	
-	1.9	4, 6, 8, 10	PTOE	SolTra Open End Overflow	-	48	102, 152, 203, 254	
<b>Stainless Steel</b>								
-	1.8	2.2	TB7	304 SS Basket Strainer	-	46	56	

\*Plastic disc strainer included with each outlet

**DROPIN SINKS**

**DropIn Sinks**



**DropIn Sink Dimensions**

Dimensions (in)									Wgt (lb)	Sink No.	Outlet	Wgt (kg)	Dimensions (mm)							
Inside			Outside			Outlet		Inside					Outside			Outlet				
A	B	C	D	E	F	G	H					A	B	C	D	E	F	G	H	
9.0	6.0	5.8	10.6	7.6	6.8	3.0	4.5	9	D01C	Center	4	229	152	147	269	193	173	76	114	
12.0	8.0	5.8	13.6	9.6	6.8	4.0	6.0	16	D03C	Center	7	305	203	147	345	244	173	102	152	
14.0	10.0	5.0	15.6	11.6	5.8	3.5	3.5	18	A05	Corner	8	356	254	127	396	295	147	89	89	
14.0	10.0	6.2	15.6	11.6	7.2	4.5	4.5	22	D05	Corner	10	356	254	157	396	295	183	114	114	
14.0	10.0	6.2	15.6	11.6	7.0	5.0	7.0	24	D05C	Center	11	356	254	157	396	295	178	127	178	
12.0	12.0	12.0	13.6	13.6	12.9	6.0	6.0	34	D06	Center	15	305	305	305	346	345	328	152	152	
14.0	14.0	5.0	15.6	15.6	5.8	4.5	4.5	24	A07	Corner	11	356	356	127	396	396	147	114	114	
15.0	8.0	6.0	16.6	9.6	7.0	4.5	4.5	25	D08	Corner	10	381	203	147	422	244	178	114	114	
15.0	8.0	10.8	16.6	9.6	11.8	4.5	4.5	25	D09	Corner	11	381	203	274	422	244	300	114	114	
16.0	8.0	6.8	17.6	9.6	7.8	4.0	4.5	20	D10	End	9	406	203	173	447	244	198	102	114	
16.0	8.0	6.8	17.6	9.6	7.8	4.0	8.0	22	D10C	Center	10	406	203	173	447	244	198	102	203	
16.0	12.0	8.0	17.6	13.6	9.0	4.5	4.5	30	D15	Corner	14	406	305	203	447	345	229	114	114	
16.0	12.0	8.0	17.6	13.6	9.0	6.0	8.0	31	D15C	Center	14	406	305	203	447	345	229	152	203	
16.0	16.0	9.6	17.6	17.6	10.6	4.5	4.5	42	D19	Corner	19	406	406	244	447	447	269	114	114	
16.0	16.0	7.5	17.6	17.6	8.5	4.5	4.5	32	D20	Corner	15	406	406	191	447	447	216	114	114	
16.0	16.0	15.0	17.6	17.6	16.0	4.5	4.5	58	D21	Corner	26	406	406	381	447	447	406	114	114	
18.0	6.5	6.8	19.6	8.2	7.8	3.3	9.0	30	D22C	Center	14	457	165	173	498	208	198	84	229	
18.0	15.0	5.0	19.6	16.6	5.8	4.5	4.5	35	A25	Corner	16	457	381	127	498	422	147	114	114	
18.0	15.0	7.9	19.6	16.6	8.9	4.5	4.5	39	D25	Corner	18	457	381	201	498	422	226	114	114	
18.0	15.0	5/11	19.6	16.6	12.0	5.5	4.5	39	A26	Corner	18	457	381	127/279	498	422	305	140	114	
18.0	15.0	11.0	19.6	16.6	11.9	4.5	4.5	53	D30	Corner	24	457	381	279	498	422	302	114	114	
18.0	15.0	10.8	19.6	16.6	11.8	7.5	9.0	50	D30C	Center	23	457	381	274	498	422	300	191	229	
18.0	15.0	15.8	19.6	16.6	16.7	4.5	4.5	49	D32	Corner	22	457	381	401	498	422	424	114	114	
21.0	17.0	9.8	22.6	18.6	10.6	4.5	4.5	59	D33	Corner	27	533	432	249	574	472	269	114	114	
21.0	17.0	9.8	22.6	18.6	10.6	8.5	4.5	59	D33E	End	27	533	432	249	574	472	269	216	114	
21.5	15.5	11.0	23.1	17.1	11.8	4.5	4.5	64	D45	Corner	29	546	394	279	587	435	300	114	114	
24.0	16.0	8.3	25.6	17.6	9.3	4.5	4.5	54	D50	Corner	24	610	406	211	650	447	236	114	114	
24.0	16.0	8.0	25.6	17.6	9.0	8.0	12.0	48	D50C	Center	22	610	406	203	650	447	229	203	305	
24.0	16.0	9.6	25.6	17.6	10.6	4.5	4.5	60	D51	Corner	27	610	406	244	650	447	269	114	114	
24.0	18.0	11.0	25.6	19.6	12.0	4.5	4.5	77	D52	Corner	35	610	457	279	650	498	305	114	114	
25.0	15.0	8.0	26.6	19.6	8.8	4.5	4.5	45	D54	Corner	20	635	381	203	676	498	224	114	114	
25.0	15.0	4.8	26.6	16.6	5.8	4.5	4.5	47	A55	Corner	21	635	381	122	676	422	147	114	114	
25.0	15.0	10.0	26.6	16.6	11.0	4.5	4.5	61	D55	Corner	28	635	381	254	676	422	279	114	114	
25.0	15.0	13.6	26.6	16.6	14.8	4.5	4.5	71	D57	Corner	32	635	381	345	676	422	376	114	114	
25.0	15.0	17.8	26.6	16.6	18.8	4.5	4.5	79	D58	Corner	36	635	381	452	676	422	478	114	114	
28.0	15.0	11.8	29.7	16.7	12.5	4.5	4.5	61	D59	Corner	28	711	381	300	754	424	318	114	114	
30.0	16.0	17.8	31.7	17.6	18.8	7.5	4.5	94	D61	End	43	762	406	452	805	447	478	191	114	
35.5	19.5	9.8	37.1	21.2	10.8	9.8	17.8	98	D65C	Center	44	902	495	249	942	538	274	249	452	

ADA compliant sinks are designated by this symbol. LabTops offers four shallow basin and one graduated depth DropIn Sink to accommodate ADA guidelines. All outside edges and corners are rounded for the user's comfort and protection. Plumbing outlets are located in the right rear corner to maximize space under the sink.

# HOT/COLD WATER FAUCET CUT SHEET

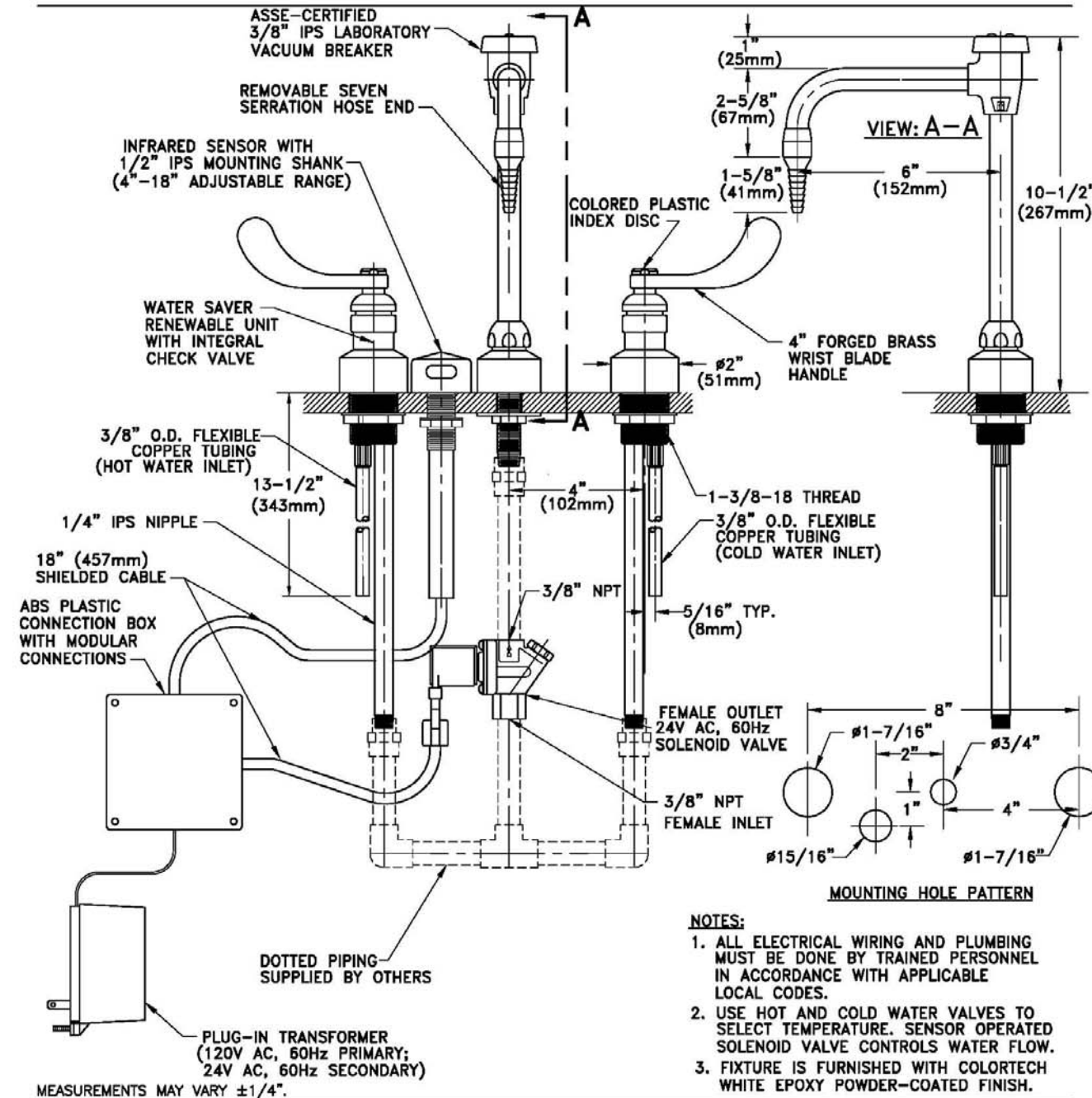
## COLORTECH

701 West Erie Street Phone 312 666 5500  
Chicago, Illinois 60610 Fax 312 666 8597

Laboratory Service Fixtures by  
WaterSaver Faucet Co.

CT4554VB-BH

DECK MOUNTED SENSOR OPERATED AUTOMATIC MIXING FAUCET WITH 6" RIGID VACUUM BREAKER  
GOOSENECK, WRIST BLADE HANDLES. AND MANUALLY OPERATED MIXING VALVES



Drawing Number: \_\_\_\_\_

Revision Number: 030806-KJS

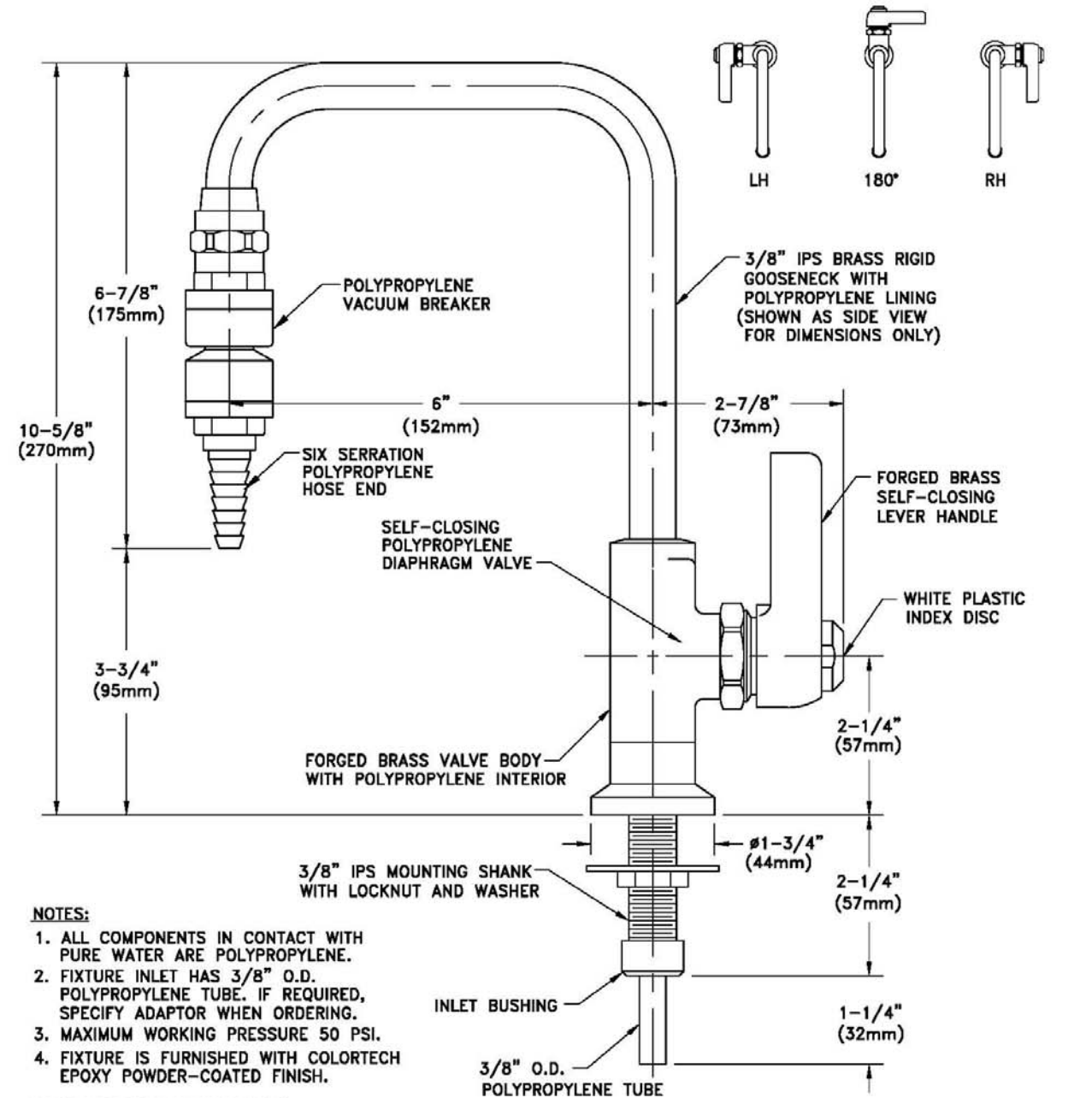
# COLORTECH

701 West Erie Street Phone 312 666 5500  
Chicago, Illinois 60610 Fax 312 666 8597

## PURE WATER FAUCET CUT SHEET

Laboratory Service Fixtures by  
WaterSaver Faucet Co.

**CT7853SC-7110-LE**  
DECK MOUNTED FIXTURE FOR DISTILLED, DEIONIZED AND ULTRA-PURE WATER WITH ALL-POLYPROPYLENE INTERIOR LINING, 6" RIGID GOOSENECK, SELF-CLOSING OPERATION, POLYPROPYLENE VACUUM BREAKER AND LEVER HANDLE



**NOTES:**

1. ALL COMPONENTS IN CONTACT WITH PURE WATER ARE POLYPROPYLENE.
2. FIXTURE INLET HAS 3/8" O.D. POLYPROPYLENE TUBE. IF REQUIRED, SPECIFY ADAPTOR WHEN ORDERING.
3. MAXIMUM WORKING PRESSURE 50 PSI.
4. FIXTURE IS FURNISHED WITH COLORTECH EPOXY POWDER-COATED FINISH.

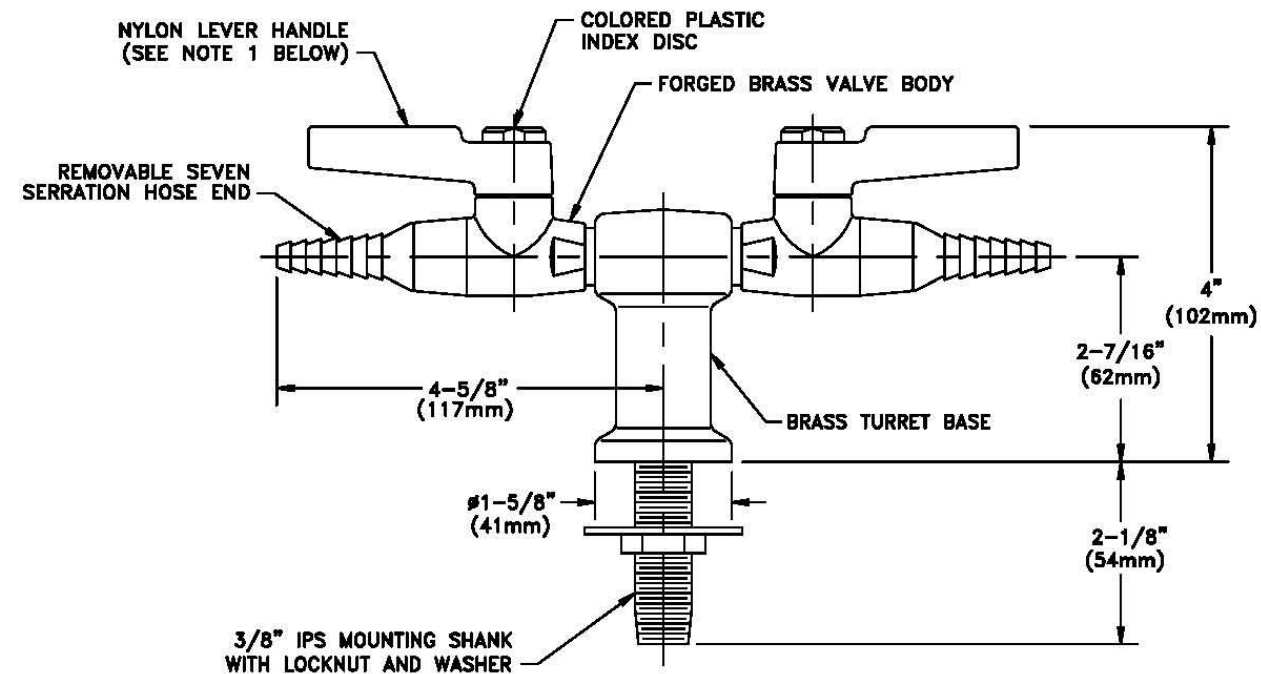
MEASUREMENTS MAY VARY  $\pm 1/4"$ .

Drawing Number: \_\_\_\_\_

Revision Number: **090497-WK**

Laboratory Service Fixtures by  
WaterSaver Faucet Co.

**CT4200-232SWSA**  
DECK MOUNTED TURRET BASE WITH TWO LABORATORY BALL VALVES AT 180° AND MOUNTING SHANK



**NOTES:**

1. VALVE IS FURNISHED WITH A BLACK NYLON LEVER HANDLE AS STANDARD. A COLORED NYLON HANDLE AND A CHROME PLATED FORGED BRASS HANDLE ARE ALSO AVAILABLE.
2. VALVE IS FACTORY ASSEMBLED AND TESTED AT 125 PSI. MAXIMUM WORKING PRESSURE IS 75 PSI.
3. VALVE IS CERTIFIED FOR GAS SERVICE BY CANADIAN STANDARDS ASSOCIATION UNDER STANDARD ANSI Z21.15-1997/CGA9.1-M97.
4. FIXTURE IS FURNISHED WITH COLORTECH WHITE POWDER-COATED FINISH.



MEASUREMENTS MAY VARY  $\pm 1/4"$ .

Drawing Number: \_\_\_\_\_

Revision Number: 082406-SJP



**400LS & 500LS Series Gravity & Vacuum/Gravity Steam Sterilizers for Life Science Applications**

**data and specifications**

**PRODUCT**

Both the 400LS Series and 500LS Series Sterilizers consist of two models. The 422LS and 522LS Gravity Steam Sterilizers employ gravity/downward displacement with positive pulse conditioning and the 433LS and 533LS Vacuum/Gravity Steam Sterilizers employ both gravity/downward displacement with positive pulse conditioning and pressure/vacuum pulsing for dynamic air removal. Up to 19 cycles can be easily accessed in two easy steps. Custom cycle names can be designated for each cycle during installation. All cycle phases are sequenced and monitored by the control system, providing both audible and visual notification of deviation from certain operating parameters.

**APPLICATION**

For general-purpose gravity or vacuum steam sterilization and decontamination of laboratory, research and animal care supplies. The sterilizer controls are specifically designed with the flexibility needed for scientific purposes and are not to be used to sterilize medical devices for patient use in healthcare applications. The selectable temperature range is from 230°F to 275°F (110°C to 135°C) and from 219°F to 275°F (104°C to 135°C) for liquid cycles. Typical applications include wrapped and unwrapped hard goods, animal cages with bedding, textiles and linens and liquids in self-venting or unsealed containers. The liquid exhaust is microcomputer controlled for linear and consistent liquid cool down, programmable within a specified range.

**MODEL SELECTION**

**400LS Series** 17.5" (445 mm) x 17.5" (445 mm) x 26" (660 mm), 4.6 Cu Ft (130 L)

- 422LS Gravity Steam or
- 433LS Gravity and Vacuum Steam

**500LS Series** 21" (532 mm) x 21" (532 mm) x 38" (965 mm), 9.7 Cu Ft (275 L)

- 522LS Gravity Steam or
- 533LS Gravity and Vacuum Steam

**DOOR SELECTION**

- Manual
- Power (not available for BSF or CCB)

**SINGLE DOOR MOUNTING**

- Recessed
- Cabinet

**DOUBLE DOOR MOUNTING**

- Cabinet, recessed one end
- Recessed both ends (500LS Series Only)

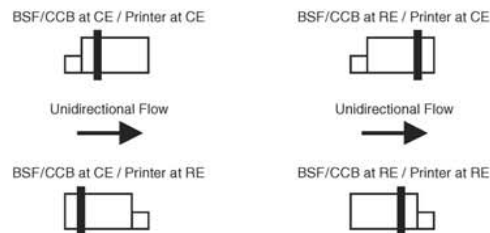


**PRINTER LOCATION** (Designation only for BSF or CCB)

- At Control End/Load End (CE)
- At Remote End/Unload End (RE)

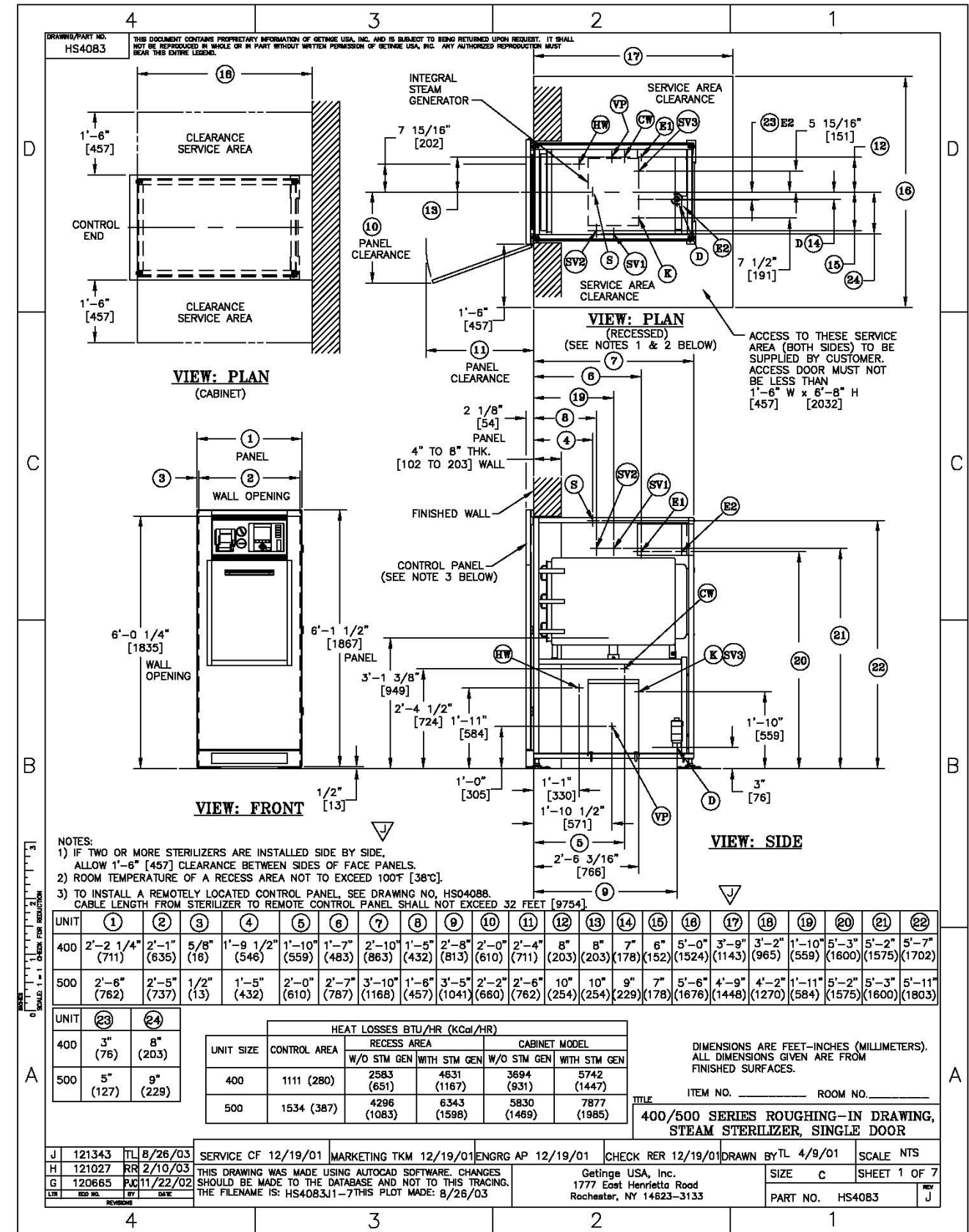
**BIOLOGIC SEALING FLANGE (BSF)** (500LS Series Manual Door Only)

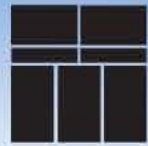
- At Control End/Load End (CE)
- At Remote End/Unload End (RE)



**CROSS CONTAMINATION BARRIER (CCB)** (500LS Series Manual Door Only)

- At Control End/Load End (CE)
- At Remote End/Unload End (RE)



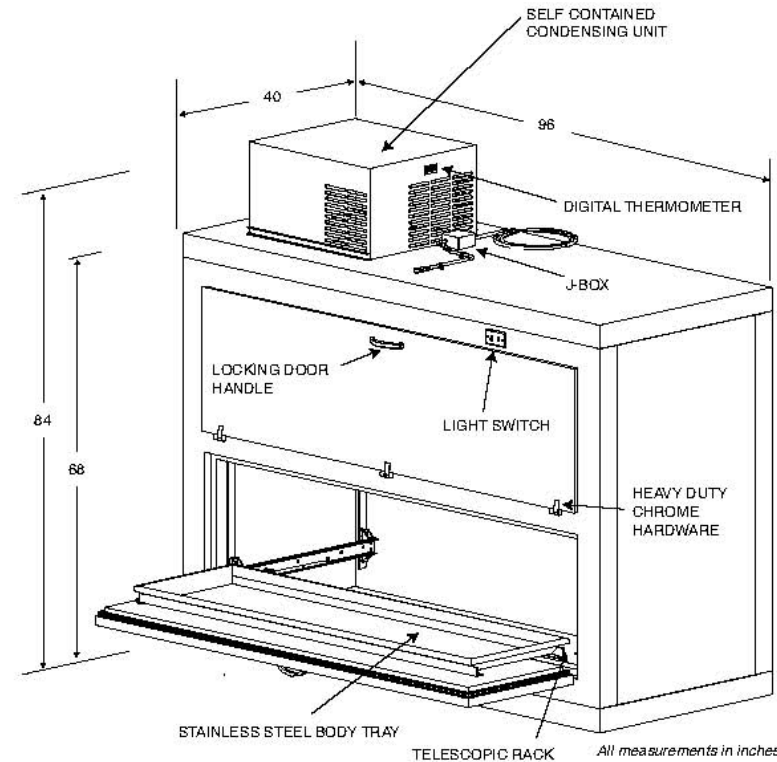


**MORTECH**  
MANUFACTURING CO.

MORTUARY REFRIGERATOR SYSTEMS  
SELF CONTAINED & WALK IN UNITS

**CADAVER REFRIGERATOR  
CUT SHEET**  
(OWNER FURNISHED)

**MODEL 1036-R116 TWO BODY SIDE ACTING REFRIGERATOR**



**MODEL 1036-R116**  
**Standard Design Features**

**Exterior:** Front - .032 Type 304 stainless steel with a No. 4 finish. Top, Sides, and Back - 20 gauge stucco embossed aluminum

**Interior:** Walls and Ceiling - 20 gauge stucco embossed aluminum Floor - 14 gauge smooth aluminum

**Dimensions:** Width 96; Depth 40; Height 84 inches

**Insulation:** 4.0 inch foamed in place urethane (UL listed, Class 1)  
Hardware: Chrome plated

**Doors:** (2) 84.0 x 22.0, flush style with magnetic gasket

**Carriage Frame:** (2) Smooth and quiet rack slide rails using special Delrin rollers  
**Removable Tray:** (2) 18 gauge Type 304 stainless steel

**Lighting:** 1 - vapor proof light with switch

**Thermometer:** 1 - digital thermometer

**Refrigeration:** Drop-in self-contained refrigeration system with digital thermometer and easy to adjust temperature controller

**Operating Temperature:** 38 degrees F

**Electrical:** 115v, 60Hz, single phase (other voltage by request)

**Freezer Model available**  
Model 1036-F116  
Freezer Operating Temperature  
0 degrees Fahrenheit

10-08

411 North Aerojet Avenue • Azusa, CA 91702 • www.mortechmfg.com  
Tel (800) 410-0100 • (626) 334-1471 • Fax 9626) 334-1704





**MORTECH**  
MANUFACTURING CO.

ANATOMY DISSECTION TABLES

**MODEL 600019 STANDARD DISSECTION PLATFORM**



**MODEL 600019**

The Standard Dissection Platform is designed as an economical dissection platform for use in research laboratories and medical schools. It is fabricated from heavy gauge 304 stainless steel with a No. 4 finish.

**Standard Design Features:**

- All stainless steel construction
- Recessed tabletop
- 6 inch casters, all with brake mechanism
- Support sockets are located on all four corners to accommodate the optional bookstand, leg supports, or instrument tray holder
- Units can be provided with or without drain. Units provided with drain will be creased toward drain for added fluid flow.

8-02

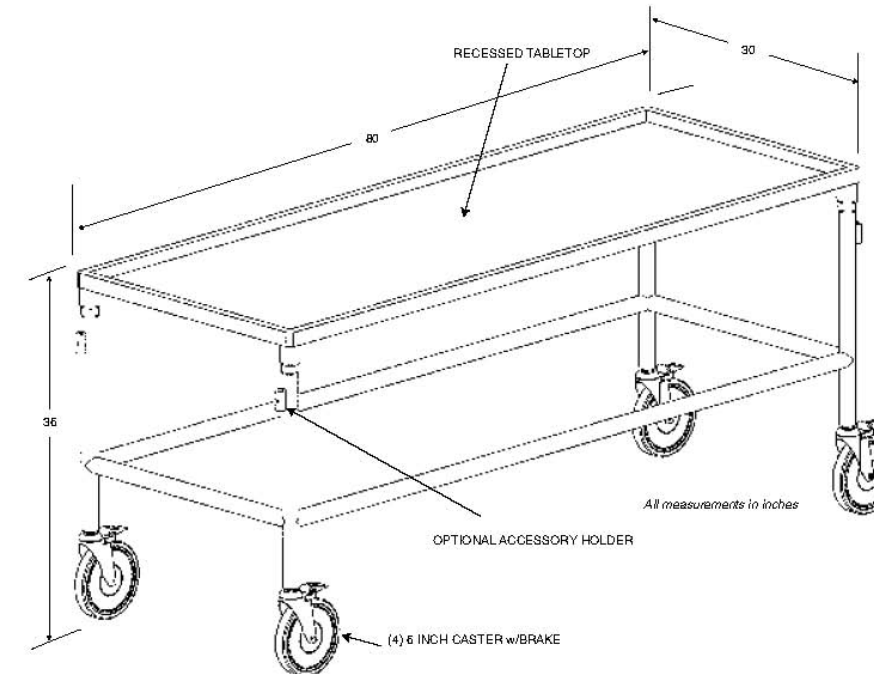
411 North Aerojet Avenue • Azusa, CA 91702 • www.mortechmfg.com  
Tel (800) 410-0100 • (626) 334-1471 • Fax 9626) 334-1704

ANATOMY DISSECTION TABLES

**MORTECH**  
MANUFACTURING CO.



**MODEL 600019 LAYOUT DRAWING & OPTIONAL FEATURES**



**MODEL 600019**

**Optional Accessories:**

- Stainless Steel Adjustable Bookstand
- Stainless Steel Leg Supports
- Stainless Steel Drain Pail
- Removable Stainless Steel Bottom Shelf
- Instrument Tray Holder

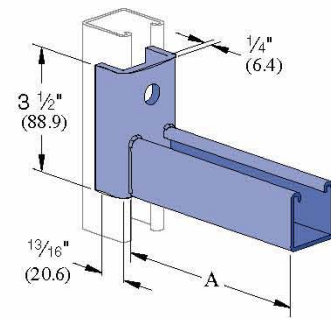
See Page 8-16 for pictures and descriptions of optional accessories.

8-03

411 North Aerojet Avenue • Azusa, CA 91702 • www.mortechmfg.com  
Tel (800) 410-0100 • (626) 334-1471 • Fax 9626) 334-1704

Brackets **UNISTRUT**

P2231, P2232



Part Number	"A" In (mm)	Wt./100 pcs Lbs (kg)	Vertical Channel		Uniform Design Load Lbs (kg)
			Part No.	Gauge	
P2231	6 152.4	191 86.6	P1000	12	1,600 725.7
			P1100	14	1,200 544.3
			P2000	16	800 362.9
P2232	12 304.8	292 132.4	P1000	12	800 362.9
			P1100	14	600 272.2
			P2000	16	400 181.4

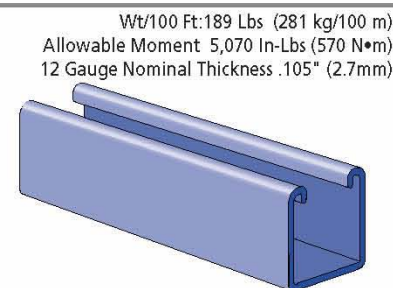
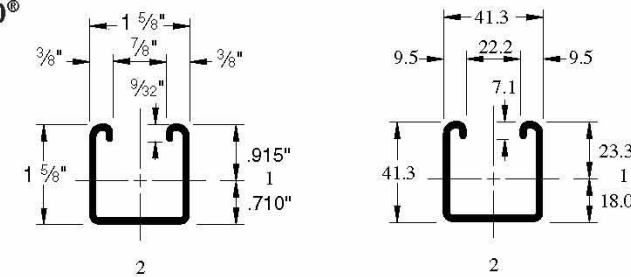
Safety Factor - 2/3

1 5/8" Channel  
Nuts & Hardware  
Telestrut System

←P2231 and P2232 brackets at shelf units, modified to 4 1/2" height.

P1000® & P1001 Channels **UNISTRUT**

P1000®



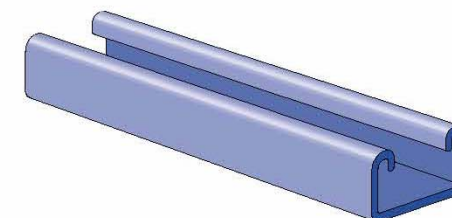
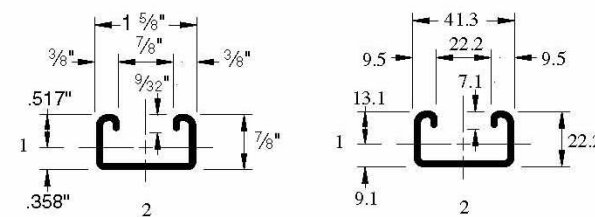
Wt/100 Ft: 189 Lbs (281 kg/100 m)  
Allowable Moment 5,070 In-Lbs (570 N•m)  
12 Gauge Nominal Thickness .105" (2.7mm)

1 5/8" Channel  
Telestrut System  
Nuts & Hardware

←P1000 unistrut at peninsula bench shelf units

P3300 & P3301 Channels **UNISTRUT**

P3300



Wt/100 Ft: 134 Lbs (200 kg/100 m)  
Allowable Moment 1,800 In-Lbs (200 N•m)  
12 Gauge Nominal Thickness .105" (2.7mm)

1 5/8" Channel  
Telestrut System  
Nuts & Hardware

←P3300 unistrut at wall shelf units