

# DIAGNOSTIC CONSULTANTS

2022 PRODUCT CATALOG

# CONTENTS

- **Bags** - Page 2
- **Absorbents** - Page 3
- **Boxes** - Page 4
- **Tapes** - Page 5-6
- **Specimen Collection** - Page 7-11
- **Mailers** - Page 12-17
- **Kits** - Page 18-25
- **Equine Kit** - Page 26
- **24 Hour collection** - Page 27

## 95 kPa BioHazard Transport Bags



Part No.	Description	Packed
15650	95kPa Bag, 7"×11"	500

Therapak's 95 kPa certified bags feature a patented leak-resistant seal. Specimen tubes and absorbent materials can be securely sealed within the front pocket of the bag by peeling away the white tape and folding the adhesive down to cover the opening. The back pocket is typically used to hold a requisition form.

## BioHazard Specimen Transport Bag + Absorbent Sheet

Part No.	Description	Packed
15601	6"×9" Transport bag w/ absorbent sheet	100

The two-pouch bag is manufactured to hold specimens in one pouch and a requisition form in the other. The absorbent sheet absorbs any liquids that may escape during transportation.

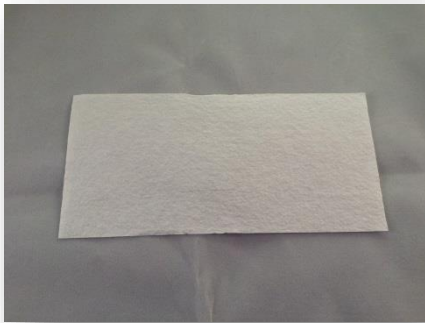


## Test Tube Transport bags



Part No.	Description	Packed
PBSG140×40×50	Generic Test Tube Bag	3000

## Absorbent Sheets



Part No.	Description	Packed
----------	-------------	--------

<b>10306</b>	3"x6" Absorbent Sheet	100
--------------	-----------------------	-----

These absorbent sheets are tissue-based papers that are impregnated with super-absorbent polymers to absorb liquids that may escape during transport.

## Aqui-Pak Absorbent Pouches

Part No.	Description	Packed
----------	-------------	--------

<b>10314</b>	Aqui-Pak 4 Bays	100
--------------	-----------------	-----

<b>10316</b>	Aqui-Pak 6 Bays	100
--------------	-----------------	-----

Aqui Pak was designed for the safe transport of laboratory specimen tubes by keeping the tubes separate and providing cushioning at the same time. It consists of multi-layered polymeric material that has extremely high absorption properties.



## Mailer Box Number 2



Part No.	Description	Packed
----------	-------------	--------

**02** 10× 10× 10cm Transport Box 1

These shipping boxes are ideal for kit packaging and outbound shipping. They can be used for return transport to the laboratory.

Custom kit boxes can be printed with company logo

## Mailer Box Number 6

Part No.	Description	Packed
----------	-------------	--------

**06** 20× 10× 10cm Transport Box 1

These shipping boxes are ideal for kit packaging and outbound shipping. They can be used for return transport to the laboratory.

Custom kit boxes can be printed with company logo



## White, Toxicology Unit Security Seal (Numbered)



Part No.	Description	Packed
----------	-------------	--------

**77800** White, Numbered Security seal 100

Space for donors ID#, initials and collector's signature

## Red, Tamper Evident tape

Part No.	Description	Packed
----------	-------------	--------

**75250** Red, Tamper Evident Security seal 500

Space for donors ID#, initials, specimen ID and collector's signature,



## Red, Tamper Evident Tape Vacutainer Tube Size



Part No.	Description	Packed
----------	-------------	--------

**39547** Red, Tamper Evident Security seal 100

Vacutainer Tube size

Space for donors ID#, initials, and collector's signature

## Red, Tamper Evident Tape



Part No.	Description	Packed
39554	Red Tamper Evidence Tape Space for donors ID#, initials, specimen ID and collector's signature	100

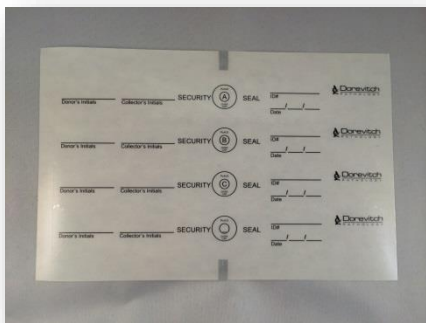
## Set of Four Numbered Red, Tamper Tape

Part No.	Description	Packed
395826	Set of Four Numbered, Red Tamper Tape with Donor and collector signature.	250

\*Option for company logo



## Transparent Four Part Tamper Tape



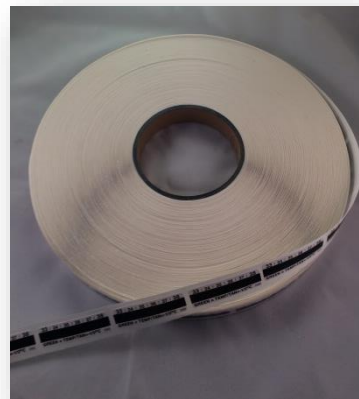
Part No.	Description	Packed
03034	Transparent Four Part Tamper Tape, Donors and Collectors initials.	250

\*option for tape to be numbered and/or have company logo.

## Temperature Strips



Part No.	Description	Packed
39250	C° Temperature Strip	4000



## 240ml Collection Beaker with Temperature Strip



Part No.	Description	Packed
10126	240ml Collection beaker With Temperature Strip	500
10126S	Shrink wrapped Beaker With Temperature Strip	500



### 45ml Capitol Vial



Part No.	Description	Packed
10155	45 ml Flip Top Vial	1000

### Vacutainer® Urine Collection Cup

Part No.	Description	Packed
364975	Sterile screw-cap collection cup with integrated transfer device.	200



### Vacutainer® Urine Test Tube



Part No.	Description	Packed
364915	16 mm x 100 mm x 11 mL BD Vacutainer® transport tube for urine testing	100

## Urine Transfer Straw



Part No.	Description	Packed
364966	Vacutainer® plastic transfer	100

device for urine testing. With integrated sampling device. Non-sterile

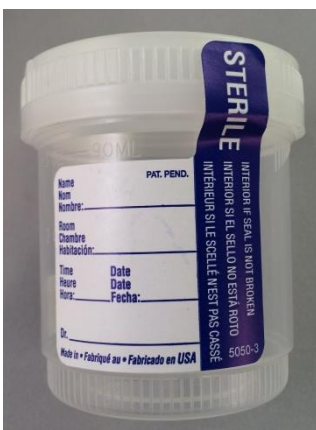
## 4Litre Jerry Can Bottle

Part No.	Description	Packed
4LNATESJ	4litre Jerry Can Bottle	24

for 24hr Urine Collection.



## 90ml Sterile Jar with Temperature Strip



Part No.	Description	Packed
74811CT	90ml(3oz)/53mm Sterile	300

Container with label

### Sarstedt Test Tubes



Part No.	Description	Packed
55.526.006	5ml Specimen Test tube	25
62.515.006	13ml Specimen Test tube	25

### 70ml Urine Specimen Container

Part No.	Description	Packed
75.9922.713	70ml Urine Specimen Jar With Donor information label	500
75.9922.713T	70ml Urine Specimen Jar Donor information label and Temperature Strip	500
75.9922.723	70ml Urine Specimen Jar No Label	500



### Syringe Keeper



Part No.	Description	Packed
1-5105	Syringe Transport Case	1

## White Disposable Funnel



Part No.	Description	Packed
<b>BAURIFUN-L</b>	White Disposable funnel	1

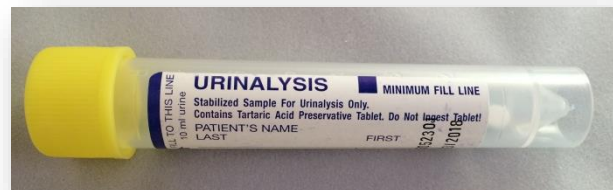
The disposable funnel has a wide lip which helps prevent spillage as well as aiding in pouring specimens directly into specimen jars or bottles.

## Urinalysis Tube with Preservative

Part No.	Description	Packed
----------	-------------	--------

**94316G** 10 ml Urinalysis Tube with Preservative 500

The 10ml urinalysis tube comes with a tartaric preservative tablet to preserve urine specimens at room temperature for up to 72 hours.



The preservative maintains an acid pH and prevents bacterial proliferation, thereby preventing false positive readings for occult blood and protein. Also the identification of formed elements, such as cells and casts, which are enhanced while in vitro crystal formation is prevented. Pathologic components are not obscured.

## Double Slide Mailer

Part No. **56674** Packed : 1

### Components

1 × Blue Double Slide Mailer



## Army Mailer

Part No. **10107** Packed : 50

### Components

1 × No 6 Transport Box

1 × 7"×11" 95kPa Bio Hazard Specimen Bag

1 × 3"×6" Absorbent Sheet



## Palms Mailer

Part No. **10106DC** Packed : 50

### Components

1 x No 6 Transport Box

1 x 7"×11" 95kPa Biohazard Specimen Bag

1 x 3"×6" Absorbent Sheet

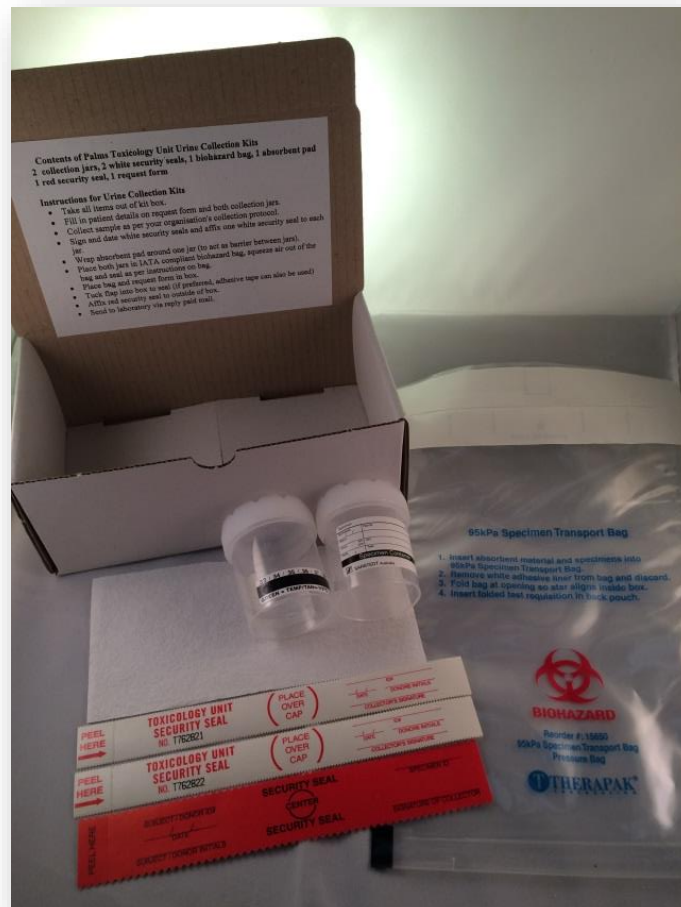
1 x Red Tamper Evident Tape

2 x Palms White Security tape

1 x 70ml urine container with Donor Info Label

1 x 70ml urine container with Donor Info Label and temperature strip

1 x Instruction sticker

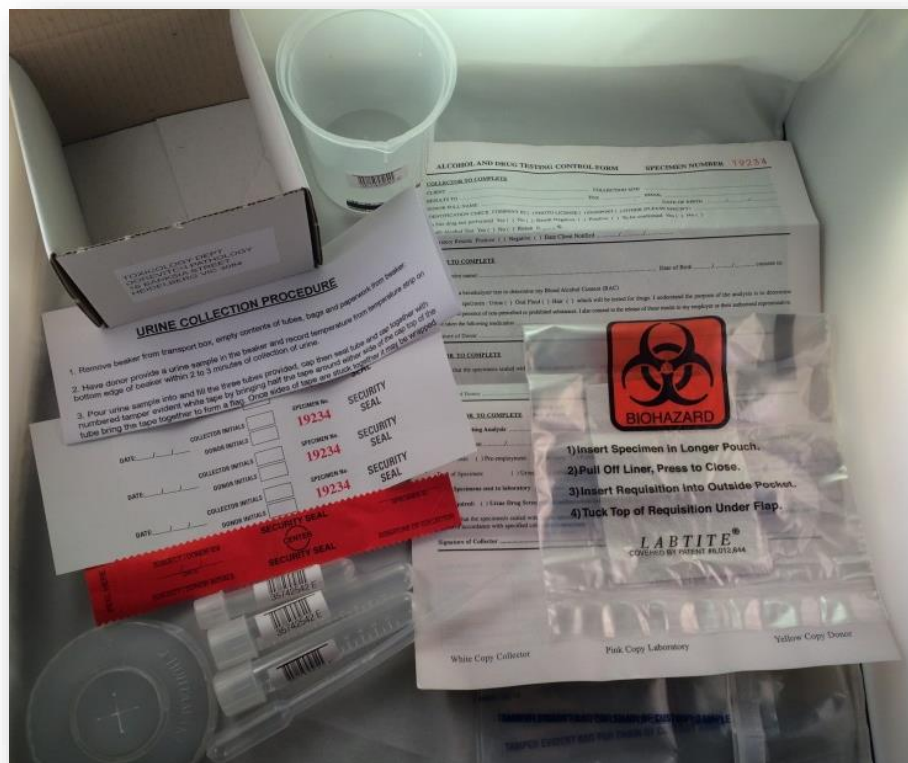


## 3 × Split Generic Chain of Custody Mailer

Part No. **10133DOR** Packed : 50

### Components

- 1 × No 2 Transport Box
- 1 × 240ml Collection beaker w/Temperature Strip (Barcoded)
- 2× 13ml Specimen Test tube (Barcoded)
- 1 × 5ml Specimen Test tube (Barcoded)
- 1 × Pipette
- 1 × Beaker lid
- 1 × 6"×9" Transport bag w/ absorbent sheet
- 2 × Generic Test Tube Bag
- 1 × Red Tamper Evident Security seal
- 1 × set of 4 white numbered security seals
- 1 × Triplicate chain of custody forms
- 1 × Instruction sheet



## DTI Mailer

Part No. **10109** Packed : 50

### Components

1 × No 6 Transport Box

1 × 7"×11" 95kPa Biohazard Specimen Bag

1 × 3"×6" Absorbent Sheet

1 × Red Tamper Evident Tape

2 × Palms White Security tape

1 × 70ml urine container with custom Donor Info Label

1 × 70ml urine container with custom Donor Info Label and temperature strip

1 × Instruction sticker



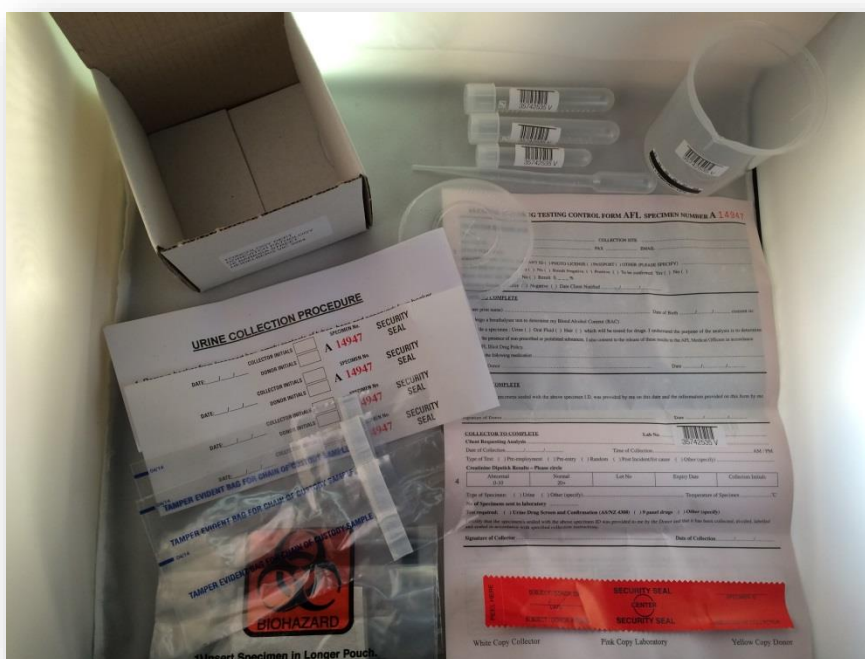


## AFL Chain of Custody Mailer

Part No.10133DORAF1 Packed : 50

### Components

- 1 × No 2 Transport Box
- 1 × 240ml Collection beaker w/Temperature Strip (Barcoded)
- 2 × 13ml Specimen Test tube (Barcoded)
- 1 × 5ml Specimen Test tube (Barcoded)
- 1 × Pipette
- 1 × Beaker lid
- 1 × 6"×9" Transport bag w/ absorbent sheet
- 2 × Generic Test Tube Bag
- 1 × Red Tamper Evident Security seal
- 1 × set of 4 white numbered security seals
- 1 × Triplicate chain of custody forms
- 1 × Instruction sheet

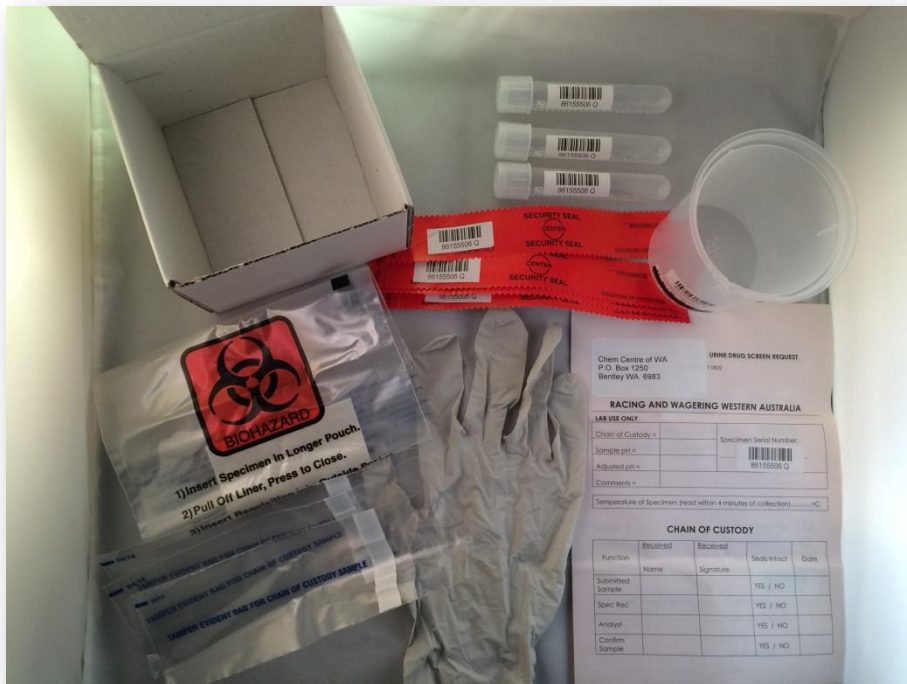


## WAJC 3 x Split Mailer

Part No. **10133WAJC** Packed : 50

### Components

- 1 × No 2 Transport Box
- 1 × 240ml Collection beaker w/Temperature Strip (Barcoded)
- 1 × 6"×9" Transport bag w/ absorbent sheet
- 3× 13ml Specimen Test tube (Barcoded)
- 3 × Generic Test Tube Bag
- 4× Red Tamper Evident Security seal barcoded
- 1 × Triplicate chain of custody forms
- 2× Nitrile Gloves

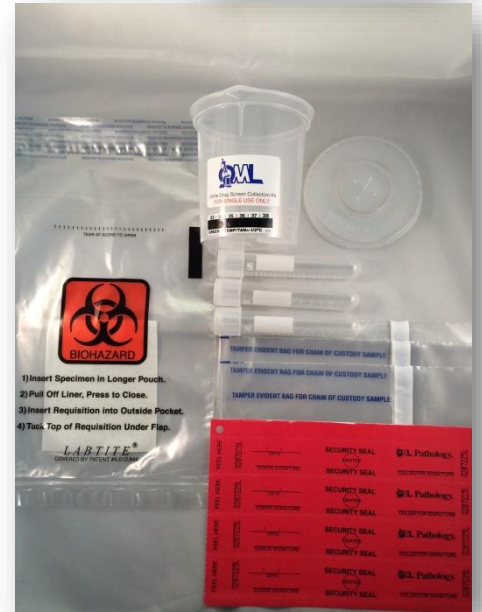


## QML Urine Collection Kit

Part No. **10150DC** Packed : 100

### Components

- 1 × 240ml Collection beaker w/Temperature Strip w/ QML logo
- 3 × 13ml Specimen Test tube
- 3 × Generic Test Tube Bag
- 1 × 6"×9" Transport bag w/ absorbent sheet
- 1 × Beaker lid
- 1 × set of 4 red QML security seals

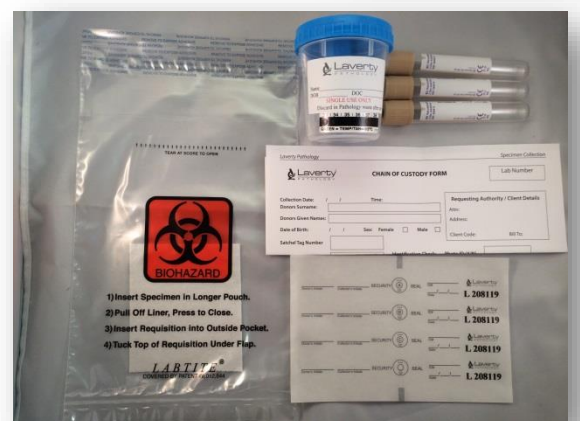


## Laverty Urine Drug Screen Kit

Part No. **2014LAVUDS** Packed : 100

### Components

- 1 × Sterile screw-cap collection cup w/ integrated transfer device, Donor info label
- 1 × 6"×9" Transport bag w/ absorbent sheet
- 1 × Transparent Four Part Tamper Tape, Donors and Collectors initials. (numbered)
- 3 × 16 mm x 100 mm x 11 mL transport tube
- 1 × chain of custody form



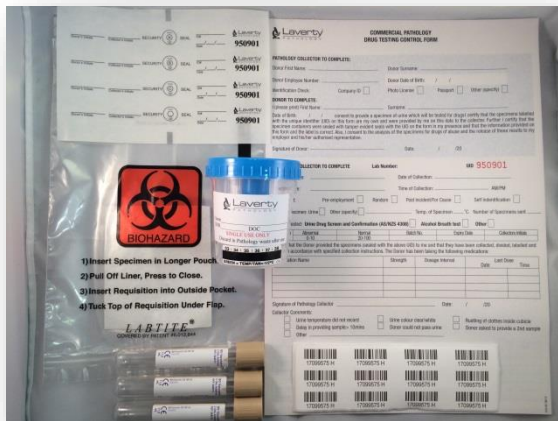


## Lavery State Rail Collection Kit

Part No.2013LAVSRA Packed : 100

### Components

- 1x Sterile screw-cap collection cup w/ integrated transfer device, Donor info label
- 1 x 6"x9" Transport bag w/ absorbent sheet
- 1 x Transparent Four Part Tamper Tape, Donors and Collector's initials. (numbered)
- 3 x 16 mm x 100 mm x 11 mL transport tube (Barcoded)
- 1 x Triplicate chain of custody form (Barcoded)

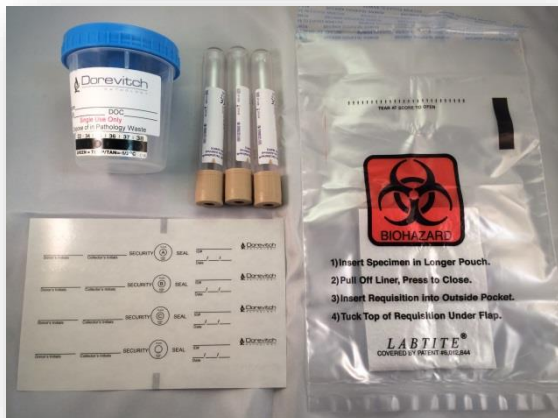


## Dorevitch Urine Drug Screen Kit

Part No.2015DORUDS Packed : 100

### Components

- 1x Sterile screw-cap collection cup w/ integrated transfer device, Donor info label
- 1 x 6"x9" Transport bag w/ absorbent sheet
- 1 x Transparent Four Part Tamper Tape, Donors and Collector's initials.
- 3 x 16 mm x 100 mm x 11 mL transport tube



## South Australia Pathology Urine Drug Screen Kit

Part No.10113SAP Packed : 100

### Components

- 1 × Sterile screw-cap collection cup w/ integrated transfer device, Donor info label
- 1 × 6"×9" Transport bag w/ absorbent sheet
- 4 × Red Tamper Tape, Donor's and Collector's initials.
- 3 × 16 mm x 100 mm x 11 mL transport tube

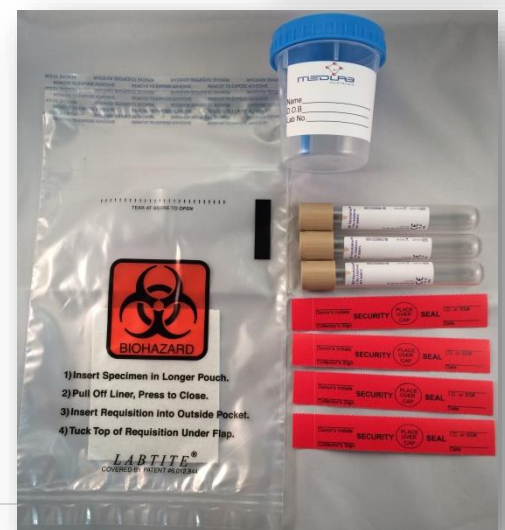
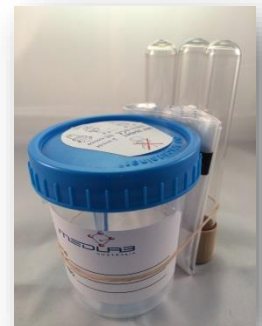


## Med Lab Urine Drug Screen Kit

Part No.10113MEDLABVT Packed : 100

### Components

- 1 × Sterile screw-cap collection cup w/ integrated transfer device, Donor info label
- 1 × 6"×9" Transport bag w/ absorbent sheet
- 4 × Red Tamper Tape, Donor's and Collector's initials.
- 3 × 16 mm x 100 mm x 11 mL transport tube



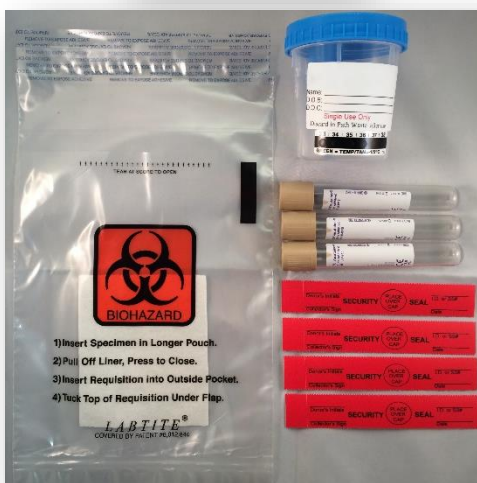
## Vacutainer® Urine Drug Screen Kit

Part No.10113 Packed : 100



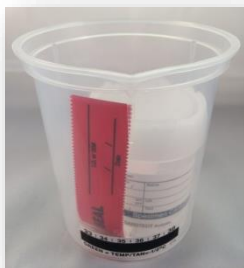
### Components

- 1 × Sterile screw-cap collection cup w/ integrated transfer device, Donor info label and custom logo
- 1 × 6"×9" Transport bag w/ absorbent sheet
- 4 × Red Tamper Tape, Donor's and Collector's initials.
- 3 × 16 mm x 100 mm x 11 mL transport tube



## Drug Court Urine Drug Screen Kit

Part No.10101DC Packed : 100



### Components

- 1 × 240ml Collection beaker w/Temperature Strip
- 1× 70ml Urine Specimen Jar with Donor information label
- 1× Red Tamper Evident Security seal



## 2x Split Urine Drug Screen Kit 45ml Flip Top

Part No. **10100DC** Packed : 100



### Components

1 x 240ml Collection beaker w/Temperature Strip

2 x Red Tamper Evident Security seal

2 x 45 ml Flip Top Vial



## AIC Kit

Part No. **10102DC** Packed : 100



### Components

1 x 70ml Urine Specimen Jar

1 x set of 3 Barcodes



## Saliva Kit

Part No.10100DC Packed : 100



### Components

1 × 6"x9" Transport bag w/ absorbent sheet

1 × Red Tamper Evident Tape

2 × Palms White Security tape

1 × Swab

3 × Generic Test Tube Bag

1 × 13ml Test tubes with Donor info sticker

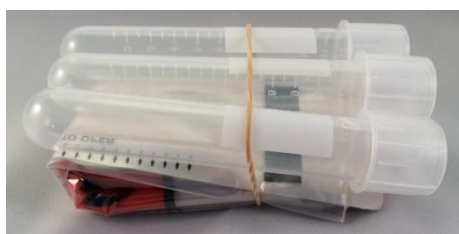
1 × 13ml Test tubes with

Donor info sticker with distilled water



## Tube and Bag Set

Part No.02002DC Packed : 100



### Components

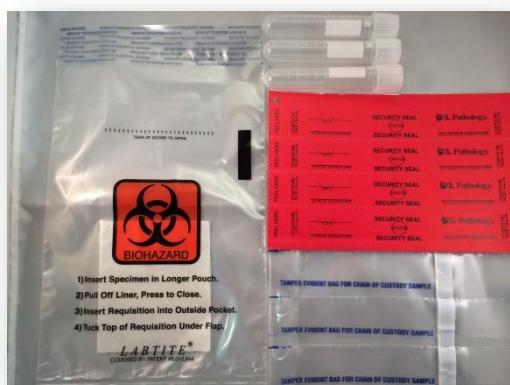
3 × 13ml Specimen Test tube

3 × Generic Test Tube Bag

1 × 6"x9" Transport bag w/ absorbent sheet

Set of Four Numbered, Red

Tamper Tape with Donor and collector signature



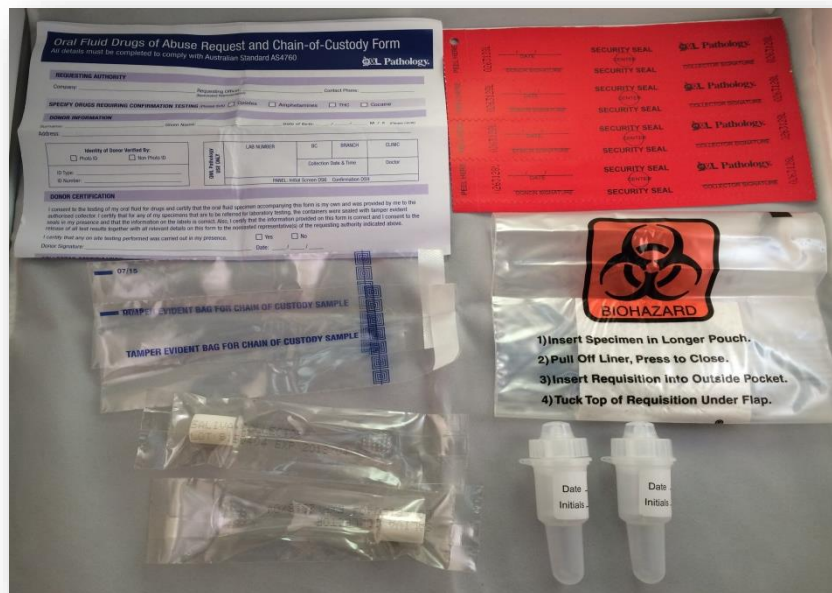


## Oral Fluid Collection Swab and Transport Tube Kit

Part No. **02006DC** Packed : 1

### Components

- 1 × 6"×9" Transport bag w/ absorbent sheet
- 1 × Set of Four Numbered, Red
- Tamper Tape with Donor and collector signature
- 2 × Generic Test Tube Bag
- 2 × Oral Swabs
- 2 × Transport Tubes with date and initials label
- 1 × Chain of Custody form



## Hair Test Collection Kit

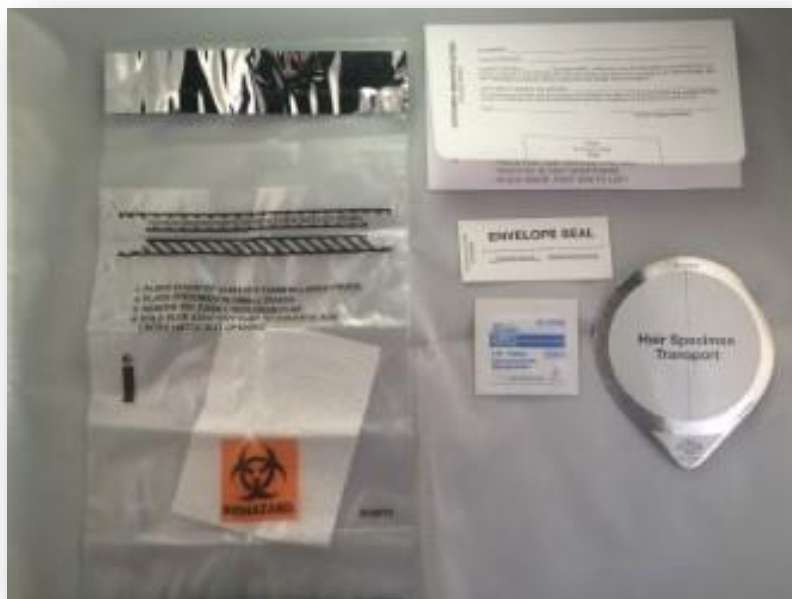
Part No. **39500**

Packed : 1

Each kit contains the necessary collection and transport components to effectively collect, store and transport the hair specimen to a testing laboratory for analysis. Both the sample acquisition envelope and the envelope seal provide collector and donor chain of custody to ensure that each self-contained sample is secure for tamper evident transport.

### Components

- 1 × Acquisition envelope with instructions
- 1 × Envelope seal
- 1 × Round foil cinching sheet
- 1 × Alcohol prep pad
- 1 × Specimen transport bag



## Vetnostic Equine Drug Screen Collection Kit

Part No. **101311VET** Packed : 50

### Components

- 1 × No 6 Transport Box
- 1 × 6"×9" Transport bag w/ absorbent sheet
- 7 × Red, Tamper Evident Security seal
- 3 × 70ml Urine Specimen Jar w/ barcode
- 4 × Vacutainer® Lithium Heparin transport tube w/ barcode
- 1 × Triplicate chain of custody forms w/ barcodes
- 1 × Instruction sheet



## VMA 24 Hour Urine Collection Kit

Part No. **CHG2050**

Packed : 24

### Components

1 x 4litre Jerry Can Bottle with donor information

and instruction sticker

1 x Blue Lid

25mls x 6N HCl acid

1 x White Disposable funnel

