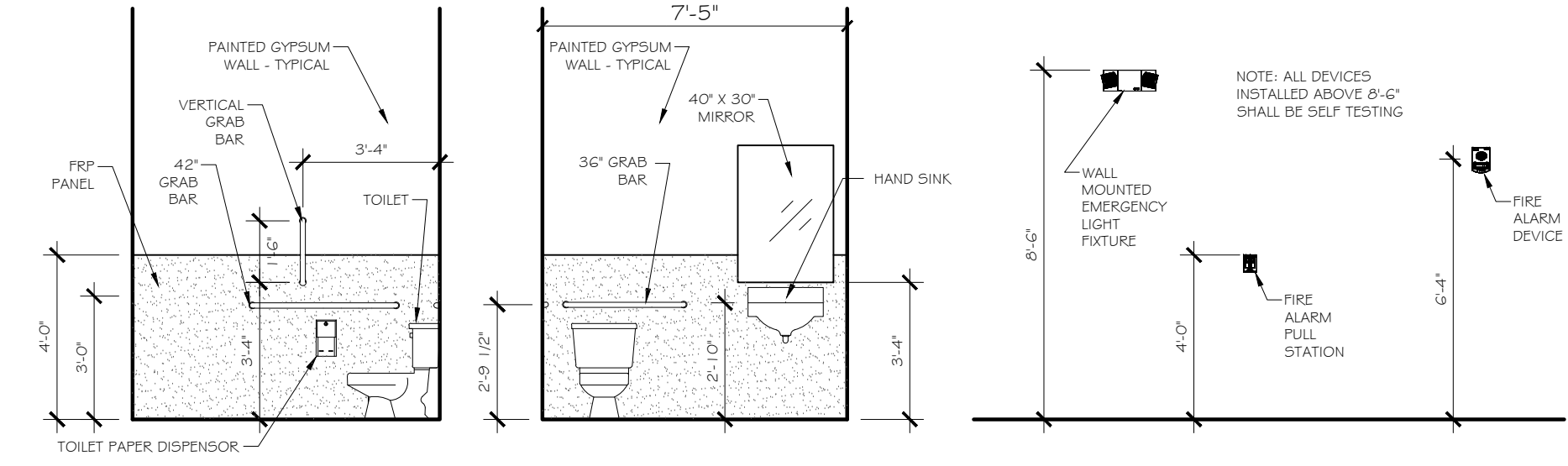


E1 REFLECTED CEILING PLAN
SCALE: 1/4" = 1'-0"

ROOM FINISH SCHEDULE										
ROOM NO.	NAME	FLOOR	Base	WALL FINISH AND TYPE				CEILING		NOTES
				NORTH	SOUTH	EAST	WEST	MATL	Height	
102	HALLWAY	CARPET	VINYL	PNT#2	PNT#2	PNT#2	PNT#2	EXIST	10'-3"	---
105	INFANTS	CARPET / VCT	VINYL	PNT#3	PNT#3	PNT#3	PNT#3	EXIST	10'-3"	---
110	INFANTS	CARPET / VCT	VINYL	PNT#3	PNT#3	PNT#3	PNT#3	EXIST	10'-3"	---
115	12-18 MONTH OLD KIDS	CARPET / VCT	VINYL	PNT#3	PNT#3	PNT#3	PNT#3	EXIST	10'-3"	---
120	2-3 YEAR OLD KIDS	CARPET / VCT	VINYL	PNT#3	PNT#3	PNT#3	PNT#3	EXIST	10'-3"	---
150	PREP	VCT	VINYL	PNT#1	PNT#1	PNT#1	PNT#1	EXIST	10'-3"	---
180	STORAGE	CARPET	VINYL	PNT#1	PNT#1	PNT#1	PNT#1	EXIST	10'-3"	---
194	LAUNDRY	VCT	VINYL	PNT#1	PNT#1	PNT#1	PNT#1	EXIST	10'-3"	---
195	EXIST RR	VCT	--	FRP / PNT#1	FRP / PNT#1	FRP / PNT#1	FRP / PNT#1	EXIST	10'-3"	---
196	MECH	CONCRETE	--	--	--	--	--	EXIST	10'-3"	---
197	RESTROOM	VCT	VINYL	FRP / PNT#1	FRP / PNT#1	FRP / PNT#1	FRP / PNT#1	EXIST	10'-3"	---
199	OFFICE	CARPET	VINYL	PNT#1	PNT#1	PNT#1	PNT#1	EXIST	10'-3"	---

EMERGENCY LIGHTING AND EXIT SCHEDULE				
Description	QTY	Manufacturer	Model	NOTE
EXIT SIGN (MODEL# NXPC3RWH)	6	NAVILITE	AP70R	WALL MOUNTED ABOVE EXIT
INDOOR EMERGENCY LIGHT	5	COOPER LIGHTING	AP25Q	WALL MOUNTED

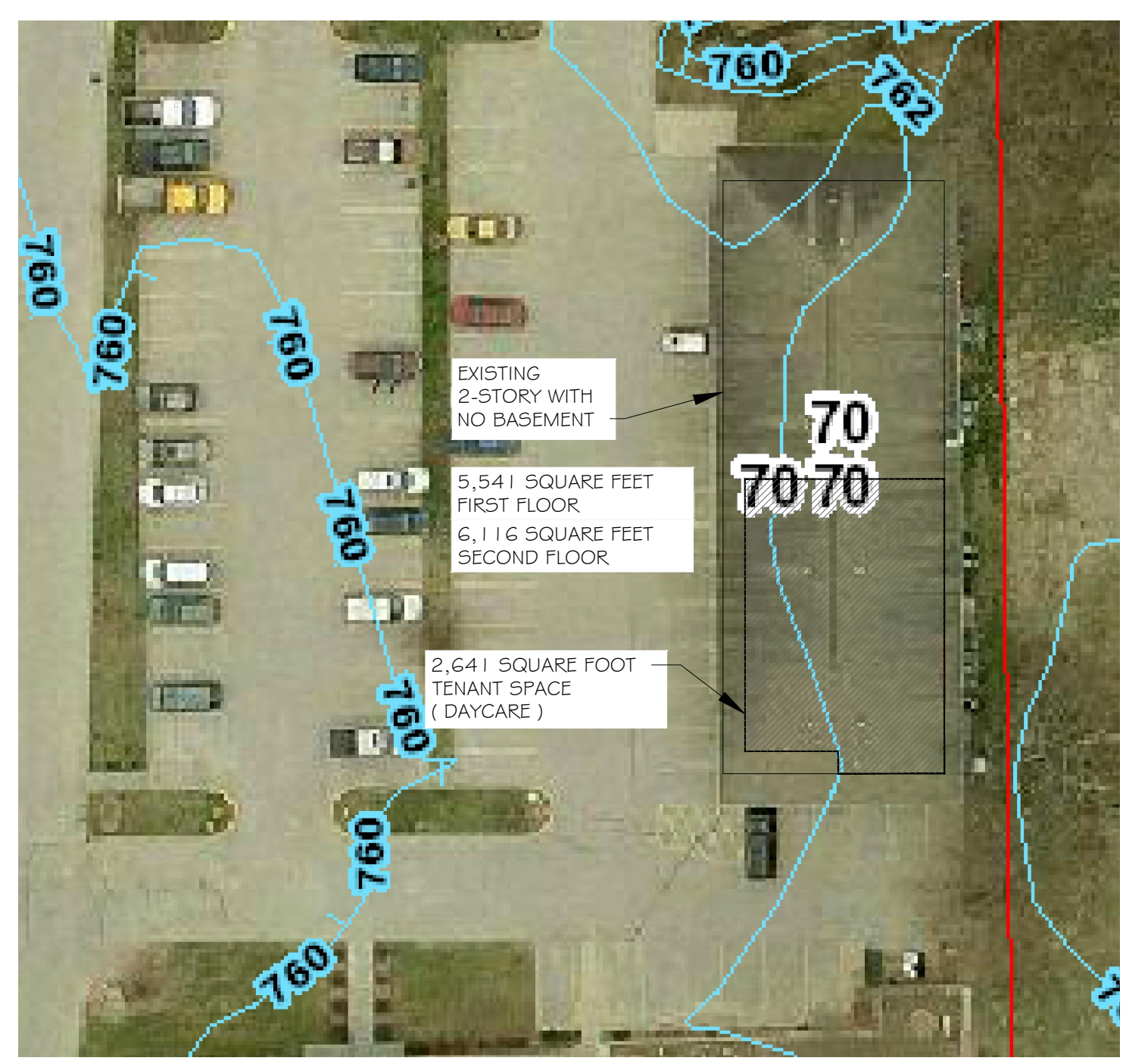


B1 RESTROOM ELEVATIONS
SCALE: 1/4" = 1'-0"

B2 MOUNTING HEIGHTS
SCALE: 1/4" = 1'-0"

Hardware Sets	Hardware Sets
SET #01 1 Exit Device 10 16 8810 F 32D SA 3 Hinges T4A3386 4 1/2 x 4 1/2 NRP 32D SA 1 Closer 1431 CPS EN SA 1 Gasketing S88 W 17' PE	SET #03 3 Hinges TA2714 4 1/2 X 4 1/2 26D MC 1 Privacy Set w/Occu. Ind. 49 8265 LNJ26D SA 1 Overhead Stop 598S 26D SA
SET #09 - Alum Dr 1 Continuous Hinge MCK-12HD 95 CLEAR MC 1 Exit Device 11 16 8504 F-LESS TRIM 32D SA 1 Pull RM2240 11" CTOC 12HD W/GRIP-ZONE US32D ROCK 1 Closer 351 OZ EN SA 1 Mounting Plate 351-B EN SA 1 Overhead Stop 598S 26D SA 1 Door Sweep 18041 CNB 36" TEK SCREWS PE 1 Raindrip 346 C 40" PE 1 Threshold 252 A 40" PE	SET #04 3 Hinges TA2714 4 1/2 X 4 1/2 26D MC 1 Privacy Set w/Occu. Ind. 49 8265 LNJ26D SA 1 Overhead Stop 598S 26D SA 1 Closer 1431 CPS EN SA 1 Gasketing PK 55 W 17' PE
SET #10 3 Hinges T4A3386 4 1/2 x 4 1/2 NRP 32D SA 1 Strm Lock w/Ddbt 10 49-185C 8230 LNJ 26D SA	SET #05 3 Hinges T4A3386 4 1/2 x 4 1/2 NRP 32D SA 1 Strm Lock w/Ddbt 10 49-185C 8230 LNJ 26D SA
SET #11 3 Hinges T4A3786 4 1/2 X 4 1/2 26D MC 1 Office Lock 10 8205 LNJ 26D SA 1 Closer 1431 CPS EN SA 1 Overhead Stop 598S 26D SA 1 Gasketing PK 55 W 17' PE	SET #16 3 Hinges T4A3786 4 1/2 X 4 1/2 26D MC 1 Office Lock 10 8205 LNJ 26D SA 1 Closer 1431 CPS EN SA 1 Overhead Stop 598S 26D SA 1 Gasketing PK 55 W 17' PE
SET #12 3 Hinges T4A3386 4 1/2 x 4 1/2 NRP 32D SA 1 Strm Lock w/Ddbt 10 49-185C 8230 LNJ 26D SA 1 Closer 1431 CPS EN SA 1 Gasketing PK 55 W 17' PE	SET #17 3 Hinges T4A3386 4 1/2 x 4 1/2 NRP 32D SA 1 Strm Lock w/Ddbt 10 49-185C 8230 LNJ 26D SA 1 Closer 1431 CPS EN SA 1 Gasketing PK 55 W 17' PE
SET #13 3 Hinges T4A3386 4 1/2 x 4 1/2 NRP 32D SA 1 Strm Lock w/Ddbt 10 49-185C 8230 LNJ 26D SA 1 Closer 1431 CPS EN SA 1 Gasketing PK 55 W 17' PE	SET #18 3 Hinges T4A3386 4 1/2 x 4 1/2 NRP 32D SA 1 Strm Lock w/Ddbt 10 49-185C 8230 LNJ 26D SA 1 Closer 1431 CPS EN SA 1 Gasketing PK 55 W 17' PE

NOTE: Perimeter weatherstrip furnished by aluminum frame supplier.



A4 PLAN
SCALE: 1/32" = 1'-0"

- GENERAL NOTES :
- TYPICAL IN EACH RESTROOM:
 - PROVIDE AND VERIFY INSTALLATION OF A SMOOTH, HARD, NONABSORBENT WALL FINISH WITHIN 2'-0" OF FRONT AND SIDES OF TOILETS AND URINALS TO A HEIGHT OF 4'-0".
 - PROVIDE UNDER COUNTER KNEE CLEARANCE - 8" DEEP X 27" HIGH X 30" WIDE AND TOE CLEARANCE 19" DEEP X 9" HIGH. COVER EXPOSED PIPES.
 - MOUNT MIRROR 40" (MAX) ABOVE FINISH FLOOR.
 - RESTROOM COUNTERTOP 34" (MAX) ABOVE FINISH FLOOR.
 - INSTALL ROOM CAPACITY SIGNS. CONFIRM CAPACITY AND SIGNAGE REQUIREMENTS WITH ARCHITECT.
 - PROVIDE PORTABLE MULTI-CHEMICAL FIRE EXTINGUISHER, TYPE 3-A, 40-B,C.
 - PROVIDE ILLUMINATED EXIT SIGN WITH BATTERY BACK-UP IN CASE OF POWER FAILURE.

Architect:
Thomas McInerney ARCHITECT
 1208 W. Hwy Street
 Iowa City, Iowa 52246-3331
 www.thomasarchitect.com
 319-331-0365
 thomas@thomasarchitect.com

ITEMS SHOWN ARE DIAGRAMMATIC AND ARE SHOWN FOR THE LIMITED PURPOSE OF INDICATING PROPOSED LOCATIONS OF THE DESIGN. CONTRACTORS SHALL PROVIDE WORK IN ACCORDANCE WITH ALL APPLICABLE CODES AND REGULATIONS REQUIRED BY THE AUTHORITY HAVING JURISDICTION. CONTRACTOR SHALL COORDINATE THE INSTALLATION OF NEW SYSTEMS WITH EXISTING SYSTEMS.

Thomas Mc Inerney Architect reserves the right to determine a fair and equitable solution to any problems, mistakes, oversights or hidden damage. Please do not hesitate to phone our office at 319-331-0365, especially immediately upon discovery a conflict with the Scope of Work.

Please do not instinctively produce a solution or proceed with work that would result in a change order requiring reimbursement by the owner.

Any solutions outside this policy shall be with prior approval and will be at the franchisee's or contractor's expense.

Project :
 Montessori Daycare
 70 Circle Drive, Suite A
 North Liberty, Iowa 52317

Project number: 12.24
Note: © COPYRIGHT 2012 UNAUTHORIZED COPYING, DISCLOSURE OR CONSTRUCTION WITHOUT WRITTEN PERMISSION BY THOMAS MCINERNEY, ARCHITECT, IS PROHIBITED.
Issue date:

Date	Description
06.12.2012	REVISION

Sheet Title:
REFLECTED CEILING PLAN
Sheet Number:

A-110