



Parts List

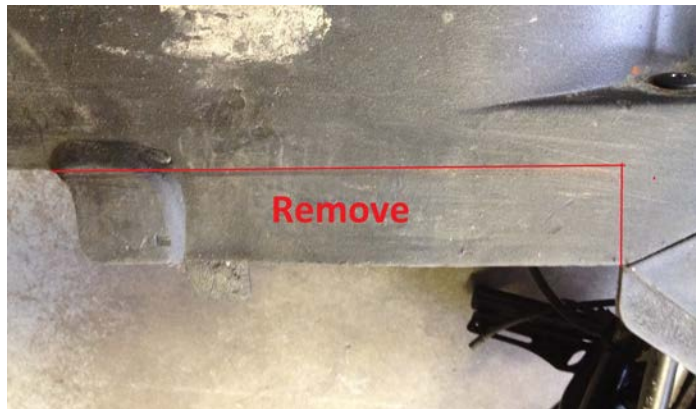
Item	Qty
Skid Plate	1
Mounting Bolts	4
Threaded Clips	4

FX Nitro Skid Plate Installation Instructions

1. After removing the large side panels remove the factory skid plate and both left and right side lower panels.
2. Remaining on bottom there is a left and right side trim piece. Remove the section in red as shown below.



3. On each lower panel measure in 1.5" from the inner edge and then draw a line. This strip then needs trimmed off of each lower side panel. Section outlined in red as shown below needs removed.



4. Install lower panels onto sled again. Do a trial fit up with the skid plate to ensure it sits flat against the subframe. If it does not, trim plastic where needed.
5. There are (4) tabs on lower subframe with holes in them. Install a threaded clip on each tab. The threads need to be on the top side towards oil pan.
6. Install the skid plate using the (4) bolts supplied. Get each bolt started before tightening any.

