

Domestic Violence Intervention Program Restroom Remodeling Project

SHEET INDEX

ARCHITECTURAL

- A-000 Cover Sheet
- A-100 Floor Plans
- A-101 Floor Plans
- A-401 Interior Elevations
- A-402 Exterior Elevations
- A-501 Details & Schedules

ELECTRICAL

- E01 Electrical - Demolition
- E02 Electrical - New Work
- E03 Electrical - Notes & Details

PLUMBING

- P01 Plumbing Demolition Plans
- P02 Plumbing Plans
- P03 Plumbing Schedule and Details

Architect:

Thomas McInerney
ARCHITECT
319.331.0365
1208 Mary Street Iowa City, Iowa 52240
www.thomasarchitect.com
thomas@thomasarchitect.com

Consultants:

IEI INNOVATIVE ENGINEERS, INC.
2871 Heinz Rd. Suite B, Iowa City, IA 52240
T. 319.855.4115 | F. 319.351.0070
www.innovativeengineersinc.com

Project:

**DVIP
Restroom
Remodel**
IOWA CITY, IOWA

Project number: 15-42

Note: © COPYRIGHT 2016
UNAUTHORIZED COPYING, DISCLOSURE OR
CONSTRUCTION WITHOUT WRITTEN
PERMISSION BY THOMAS MCINERNEY,
ARCHITECT, IS STRICTLY PROHIBITED.

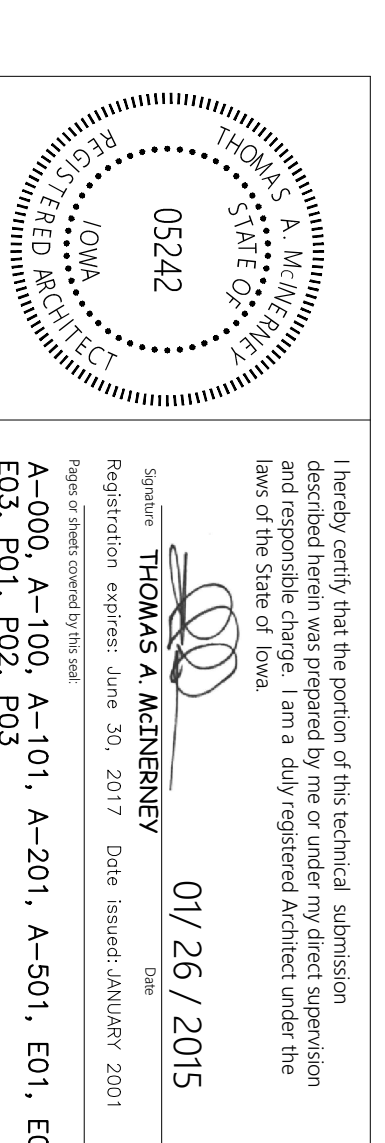
Issue date:	Description
JAN 26, 2016	BID DOCUMENTS

Sheet Title:

COVER SHEET

Sheet Number:

A-000



Architect:

Thomas McInerney
ARCHITECT

319.331.0365
1208 Marcy Street Iowa City, Iowa 52240
www.thomasarchitect.com
thomas@thomasarchitect.com

Consultants:

IEI INNOVATIVE ENGINEERS, INC.
2871 Heinz Rd. Suite B, Iowa City, IA 52240
T 319.855.4115 | F 319.351.0070
www.innovativeengineersinc.com

Project:

**DVIP
Restroom
Remodel**
IOWA CITY, IOWA

Project number: 15-42

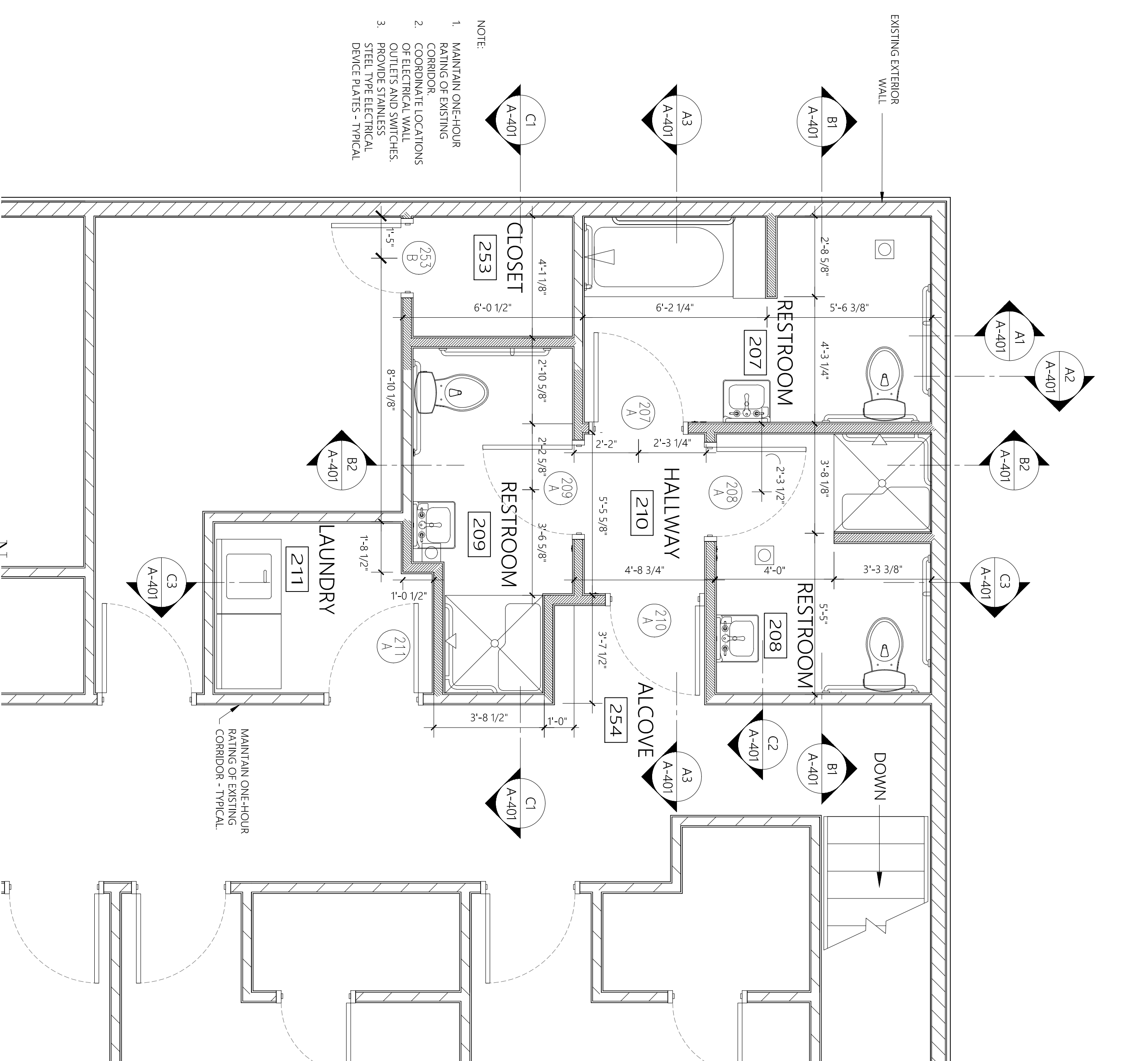
Note: © COPYRIGHT 2016
UNAUTHORIZED COPYING, DISCLOSURE OR
CONSTRUCTION WITHOUT WRITTEN
PERMISSION BY THOMAS MCINERNEY,
ARCHITECT, IS STRICTLY PROHIBITED.
Issue date: Description
JAN 26, 2016 BID DOCUMENTS

Sheet Title:

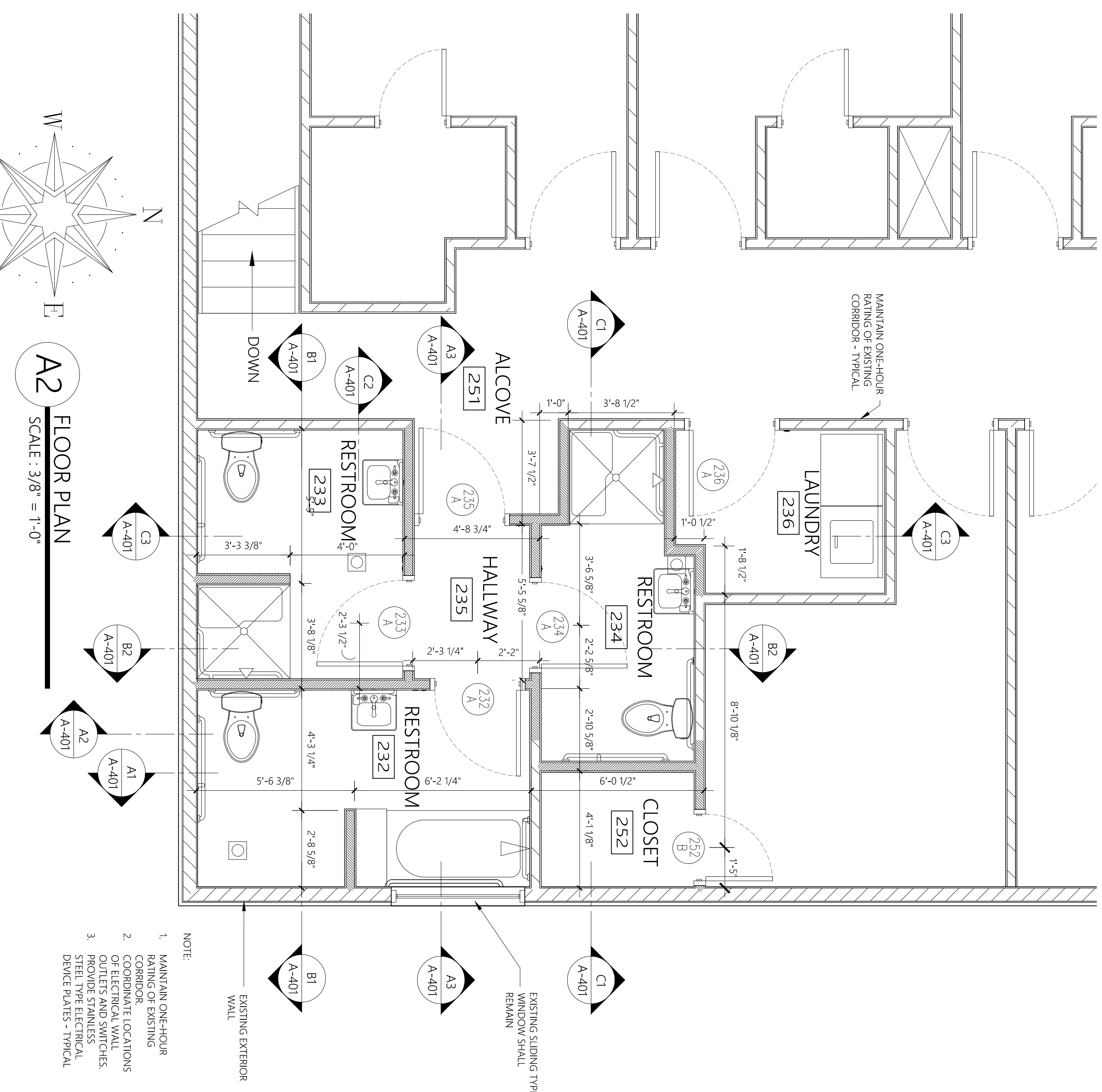
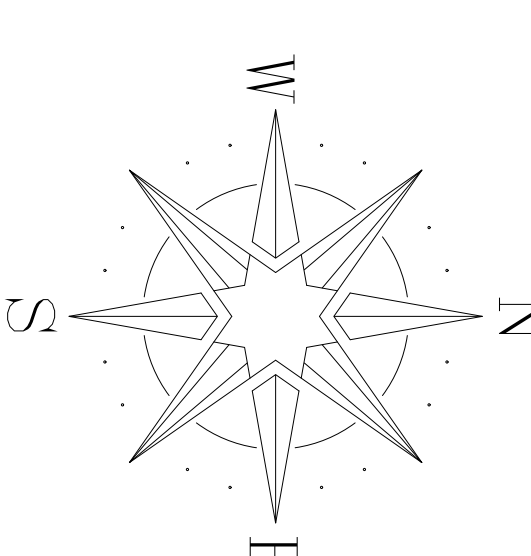
FLOOR PLANS

Sheet Number:

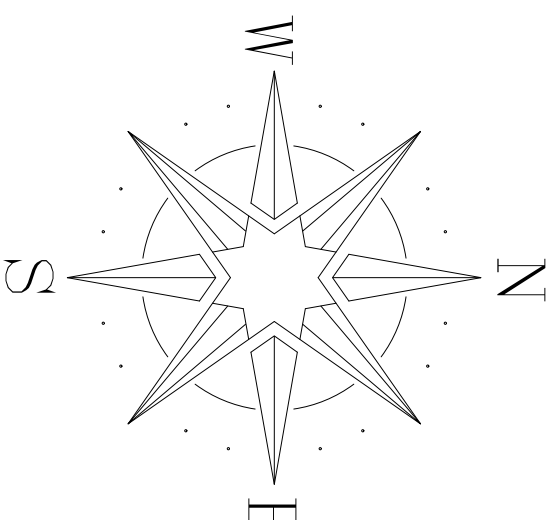
A-101



A4 FLOOR PLAN
SCALE: 3/8" = 1'-0"



A2 FLOOR PLAN
SCALE: 3/8" = 1'-0"



WALL SYMBOL LEGEND

- EXISTING INTERIOR WALL (2x4 WOOD STUDS @ 16" O.C. WITH RATED WALL BOARD ON EACH FACE)
- EXISTING EXTERIOR WALL (2x6 WOOD STUDS @ 16" O.C. WITH 7/16" OSB SHEATHING AND 4" VINYL SIDING) - INSULATE WALL CAVITY WITH 3" SPRAYED INSULATION AND PROVIDE RATED WALL BOARD ON INSIDE FACE OF STUD
- FULL HEIGHT WALL - PROVIDE 3-1/2" WOOD STUDS @ 16" O.C. WITH RATED WALL BOARD EACH FACE - INSULATE WALL CAVITY WITH 2" SPRAYED INSULATION.

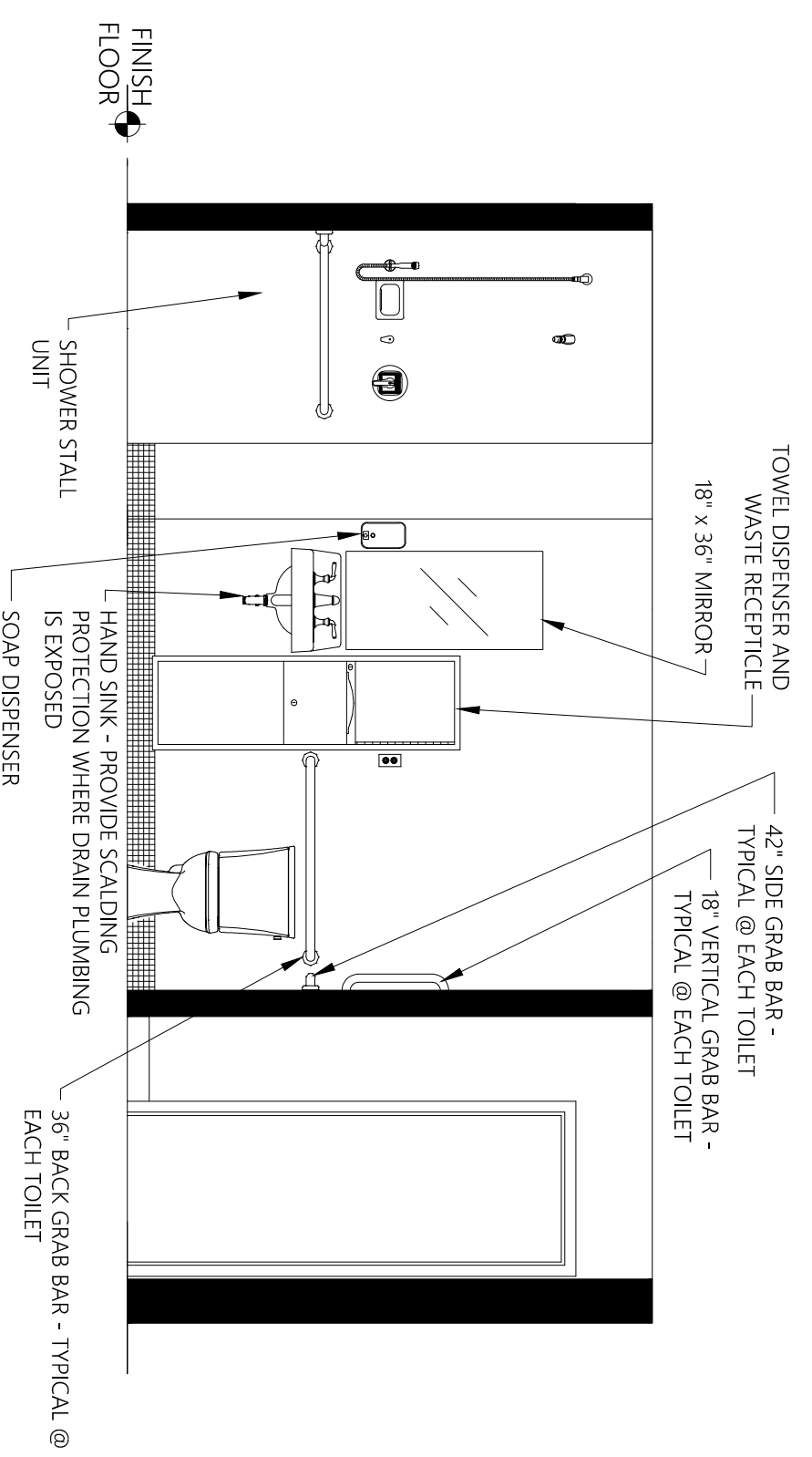
Architect:

Thomas McInerney
ARCHITECT

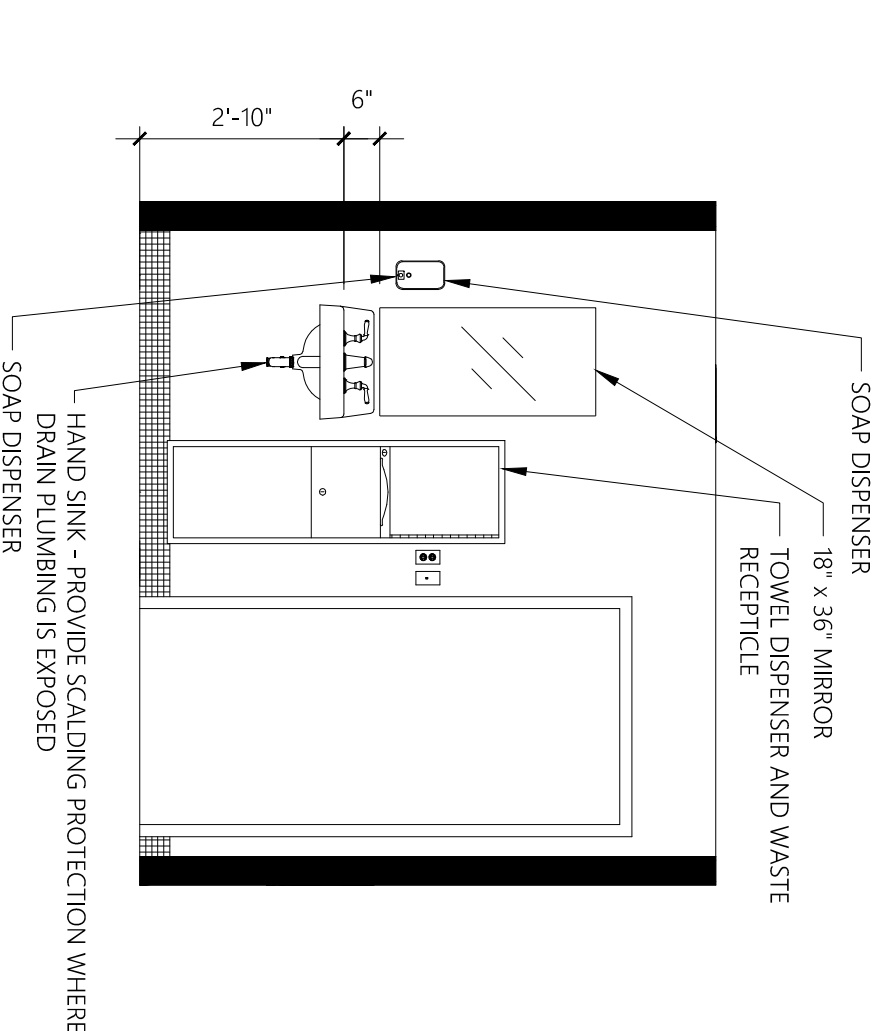
3 1 9 . 3 3 1 . 0 3 6 5
1208 Marcy Street Iowa City, Iowa 52240
www.thomasarchitect.com
thomas@thomasarchitect.com

Consultants:

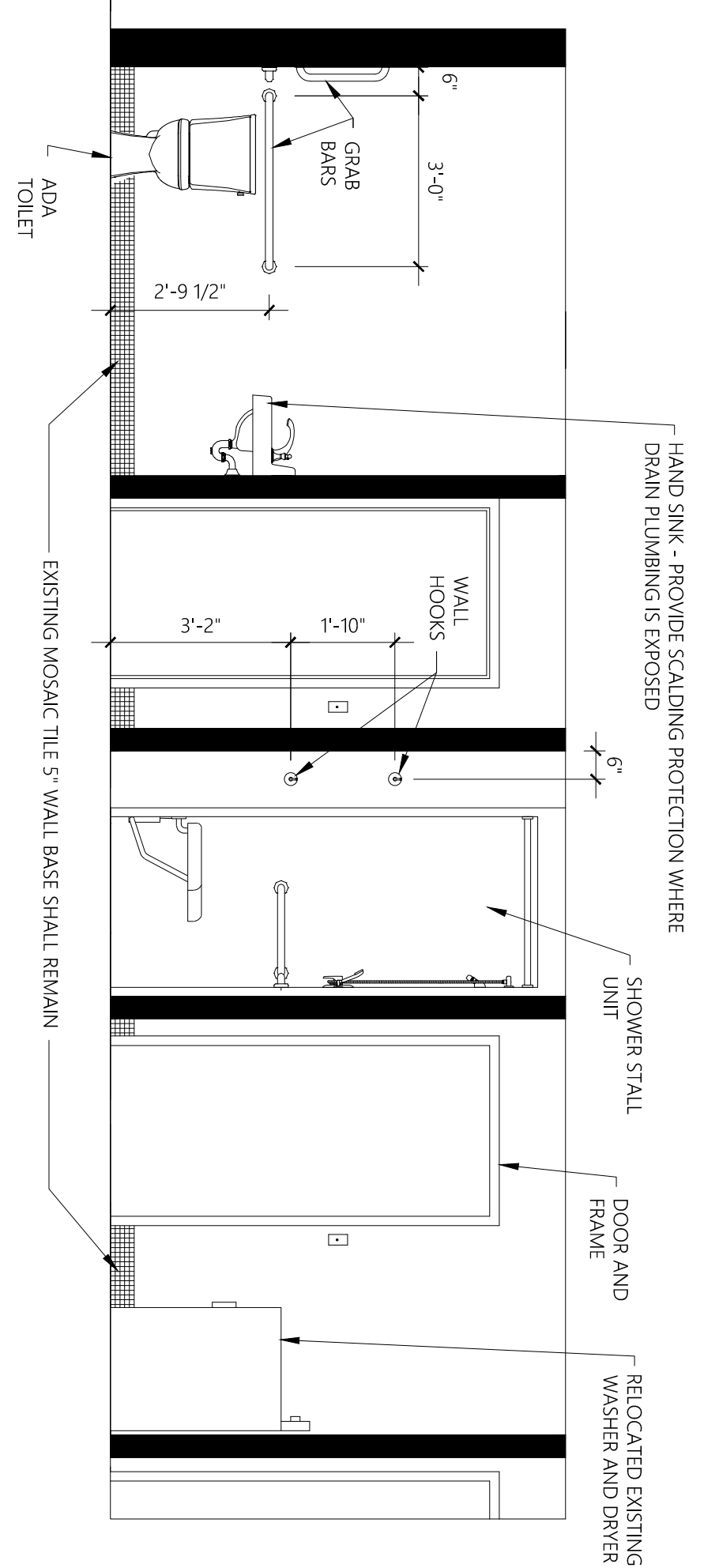
IEI INNOVATIVE ENGINEERS, INC.
2871 Heinz Rd. Suite B, Iowa City, IA 52240
T. 319.865.4115 | F. 319.351.0070
www.innovativeengineersinc.com



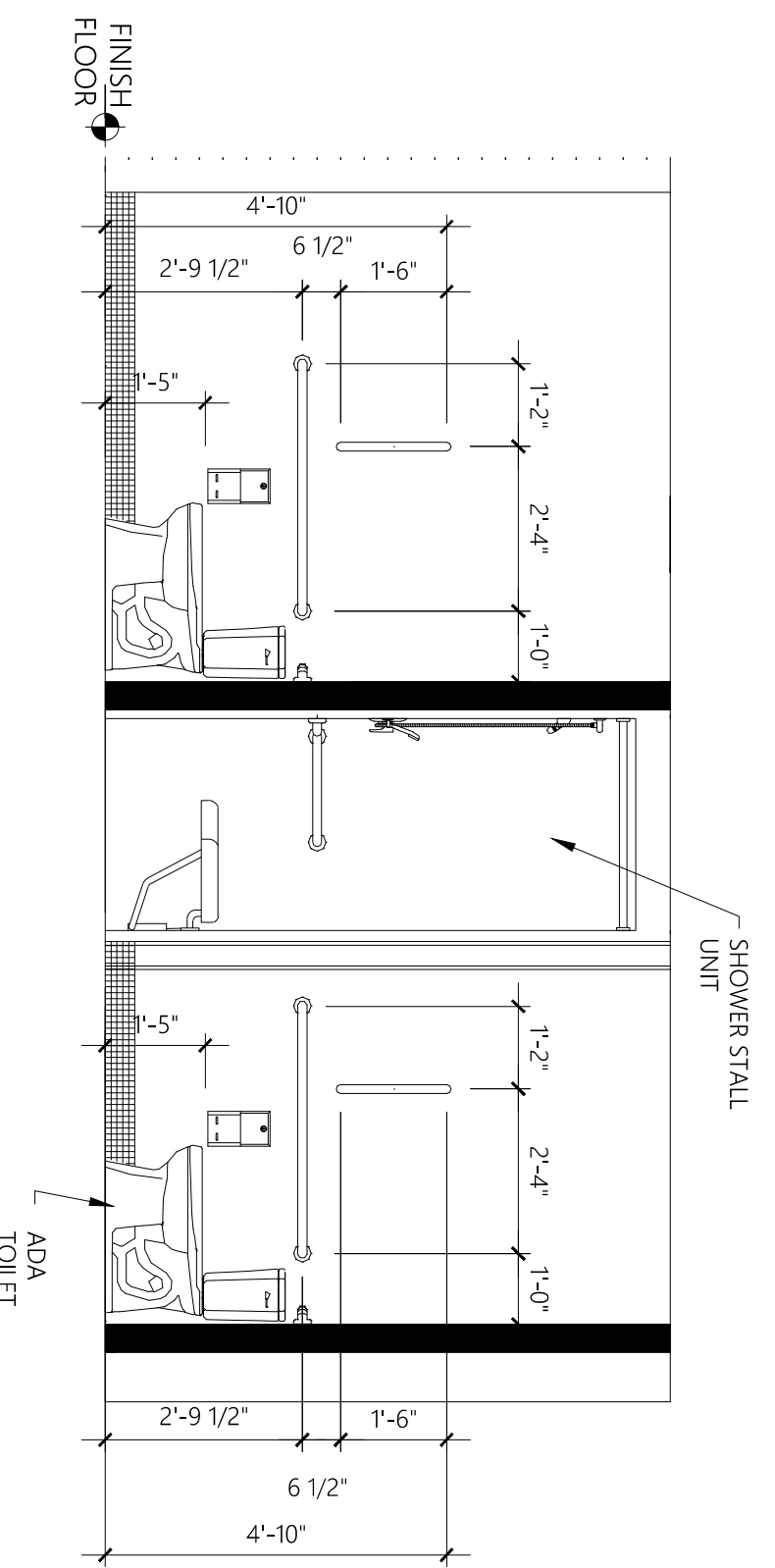
C1 INTERIOR ELEVATION
SCALE: 3/8" = 1'-0"



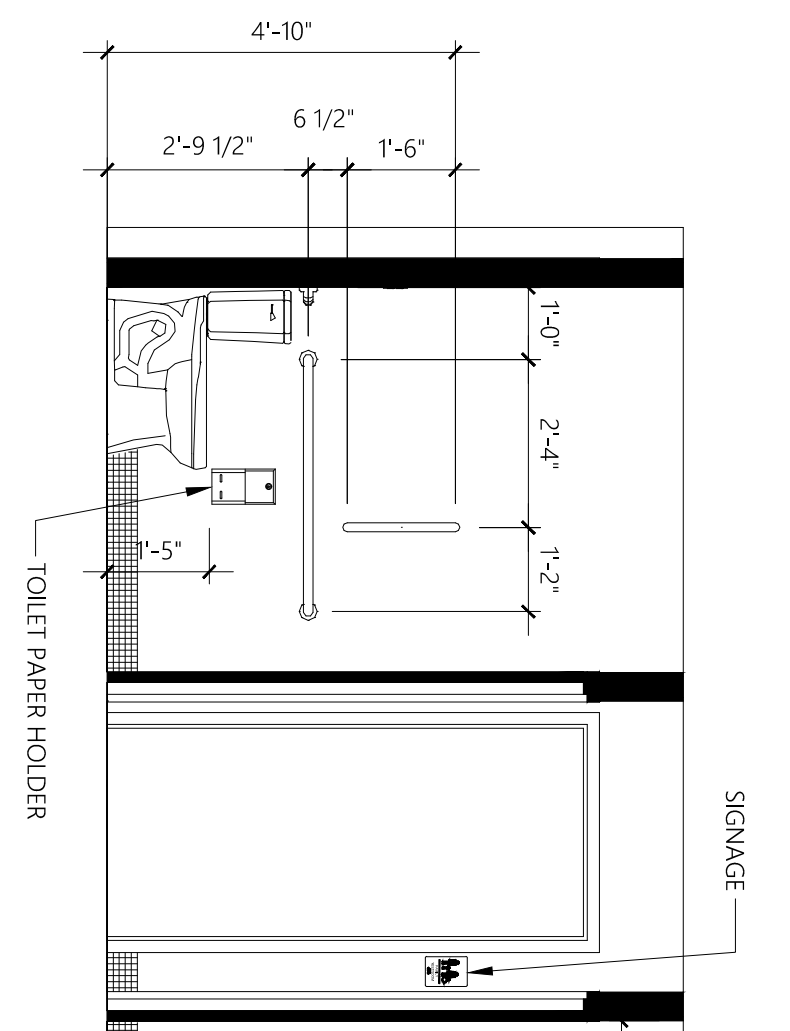
C2 INTERIOR ELEVATION
SCALE: 3/8" = 1'-0"



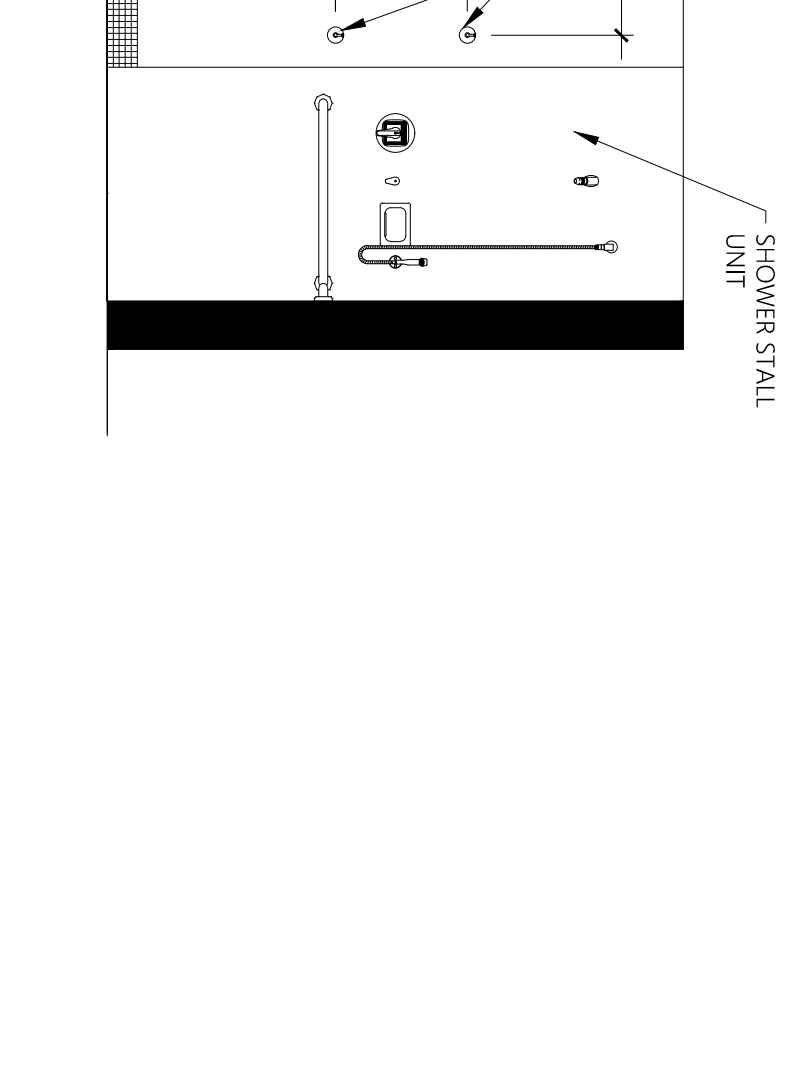
C3 INTERIOR ELEVATION
SCALE: 3/8" = 1'-0"



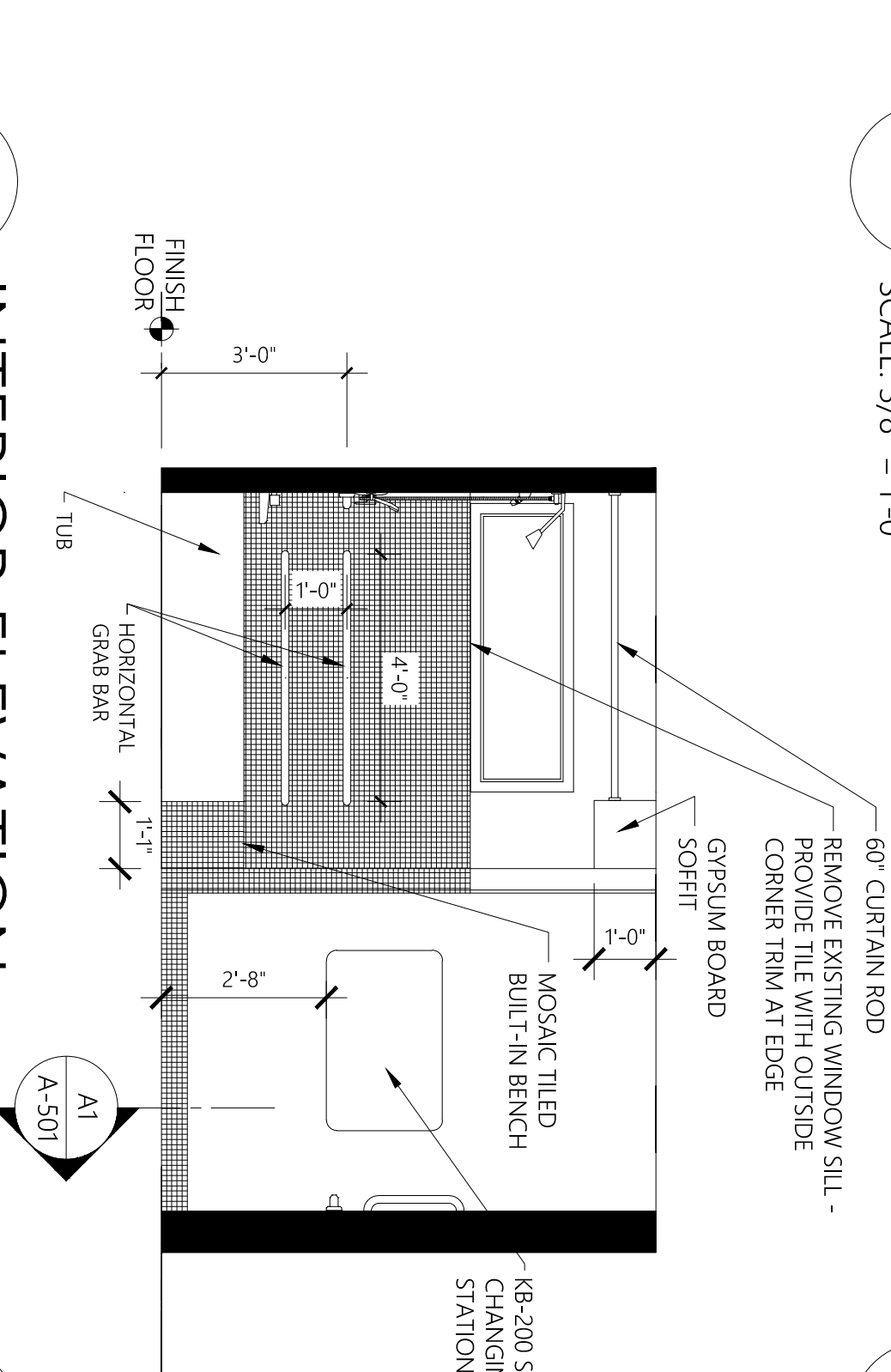
B1 INTERIOR ELEVATION
SCALE: 3/8" = 1'-0"



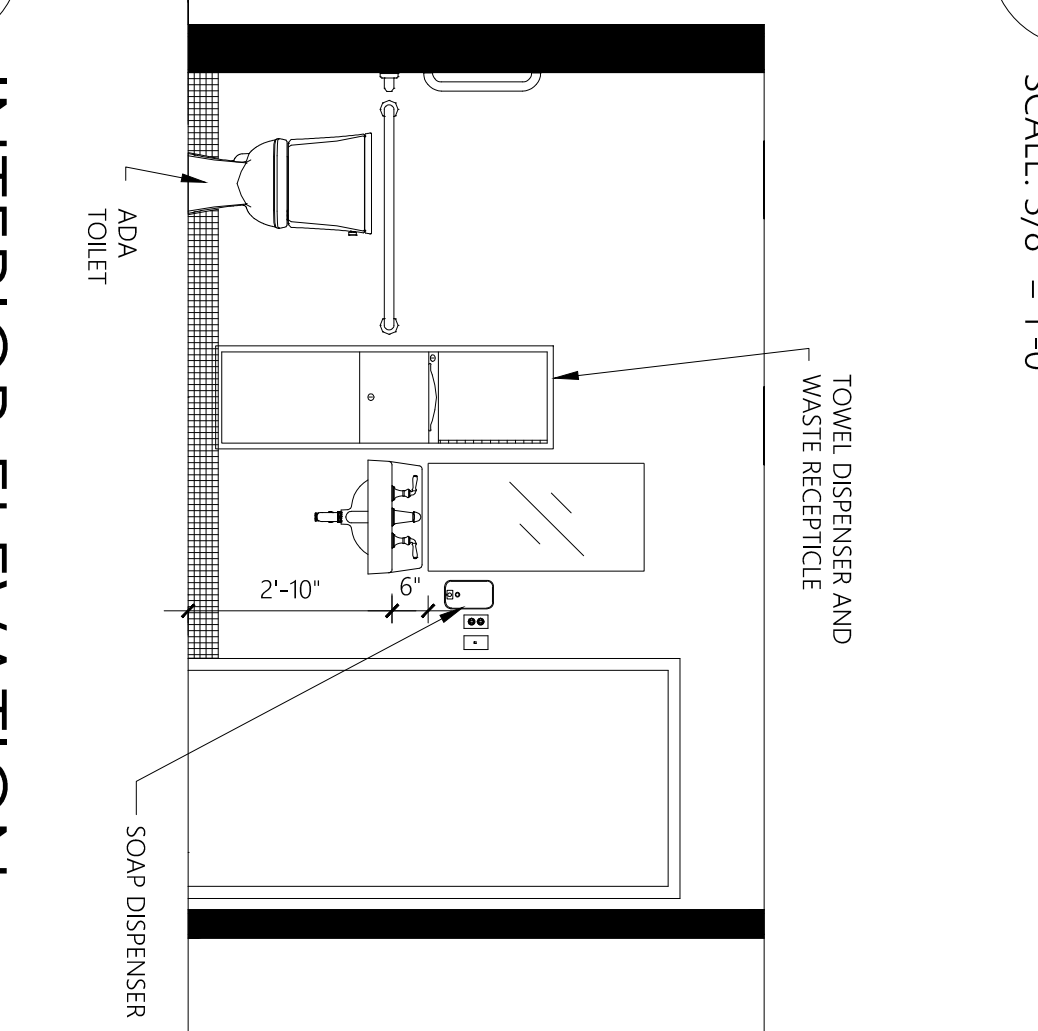
B2 INTERIOR ELEVATION
SCALE: 3/8" = 1'-0"



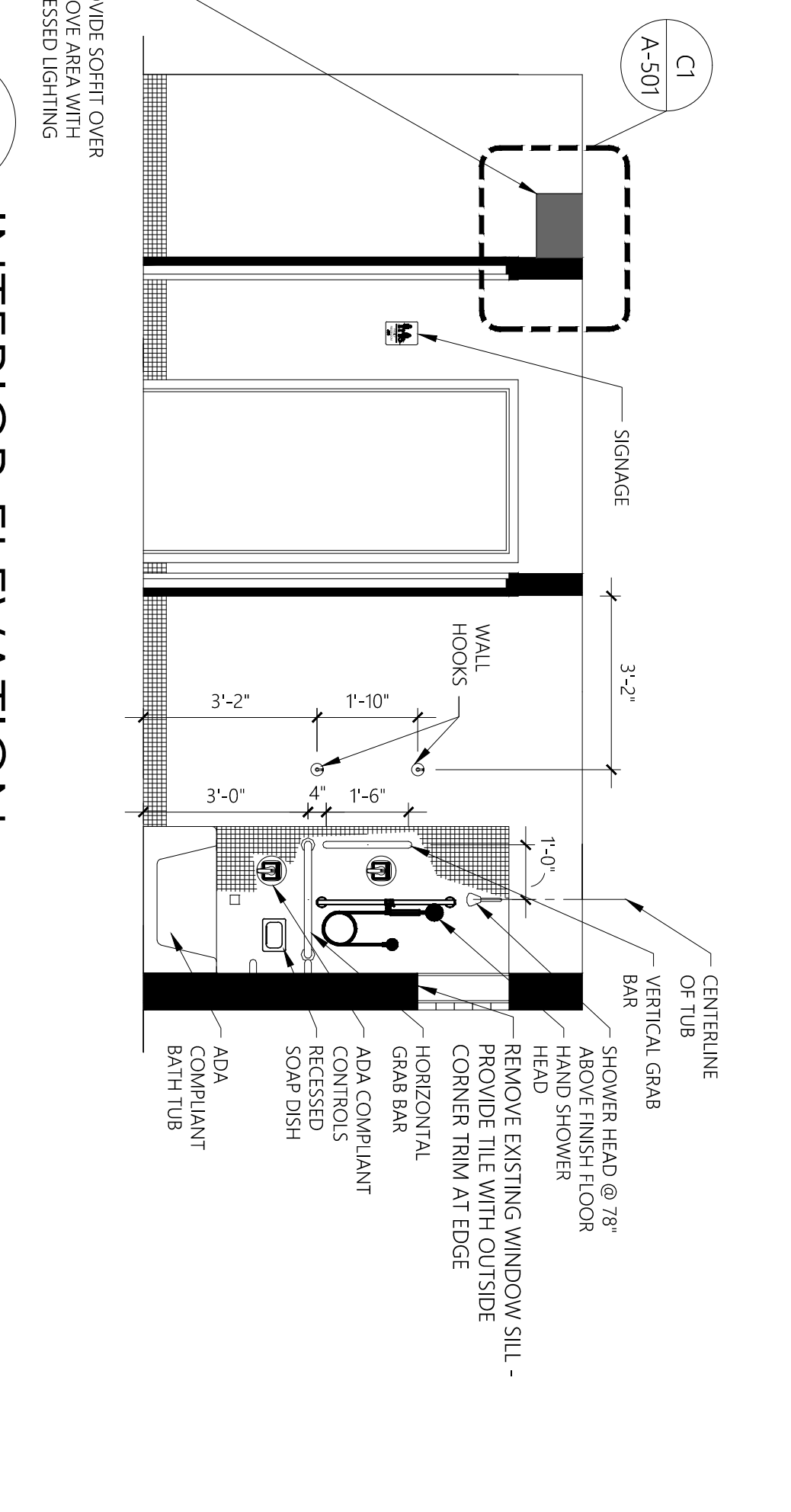
B3 INTERIOR ELEVATION
SCALE: 3/8" = 1'-0"



A1 INTERIOR ELEVATION
SCALE: 3/8" = 1'-0"



A2 INTERIOR ELEVATION
SCALE: 3/8" = 1'-0"



A3 INTERIOR ELEVATION
SCALE: 3/8" = 1'-0"

Project:
DVIP Restroom Remodel
IOWA CITY, IOWA

Project number: 15-42

Note: © COPYRIGHT 2016
UNAUTHORIZED COPYING, DISCLOSURE OR
CONSTRUCTION WITHOUT WRITTEN
PERMISSION BY THOMAS MCINERNEY,
ARCHITECT, IS STRICTLY PROHIBITED.
Issue date: Description
JAN 26, 2016 BID DOCUMENTS

Sheet Title:
INTERIOR ELEVATIONS

Sheet Number:

A-401

Architect:

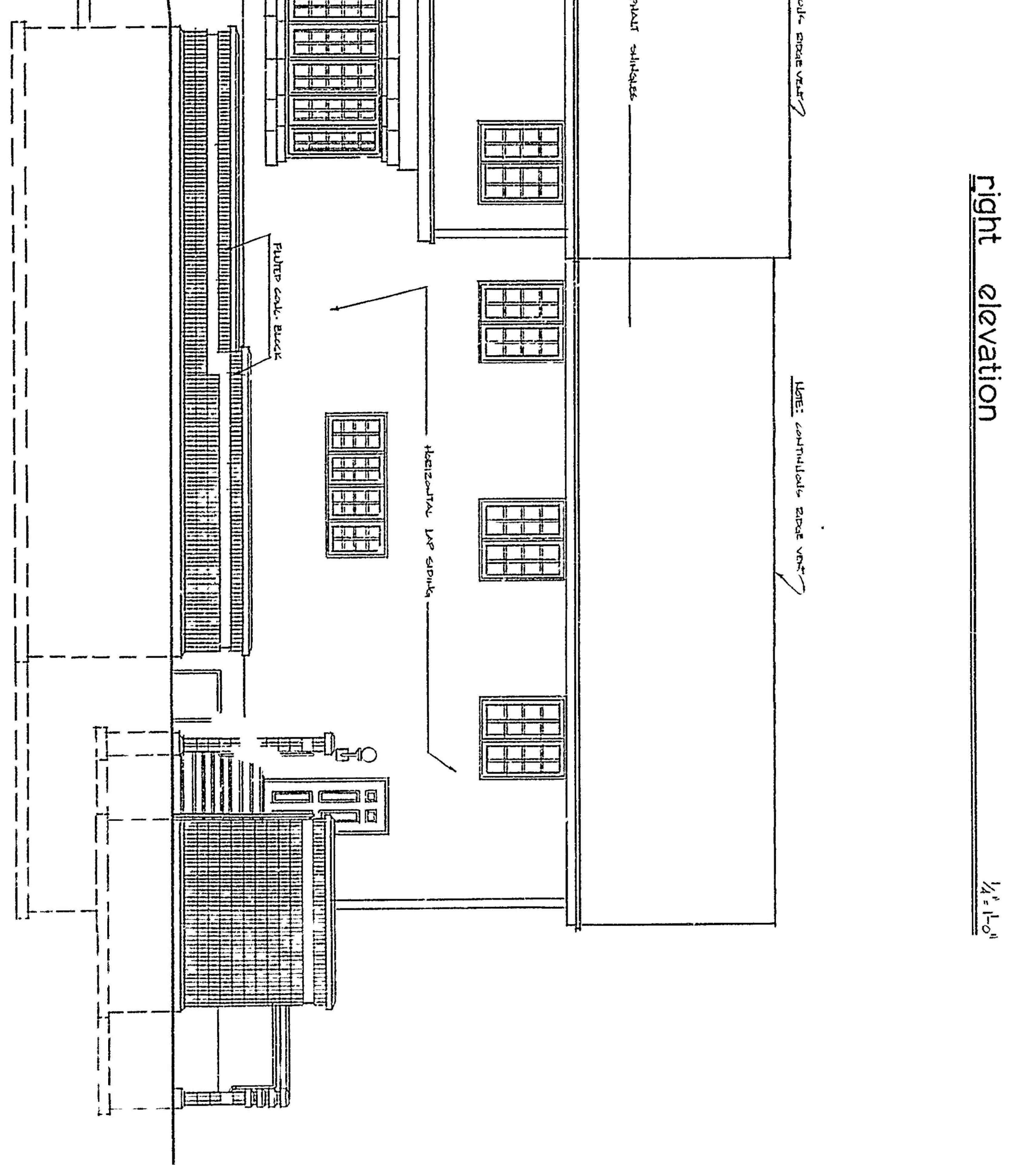
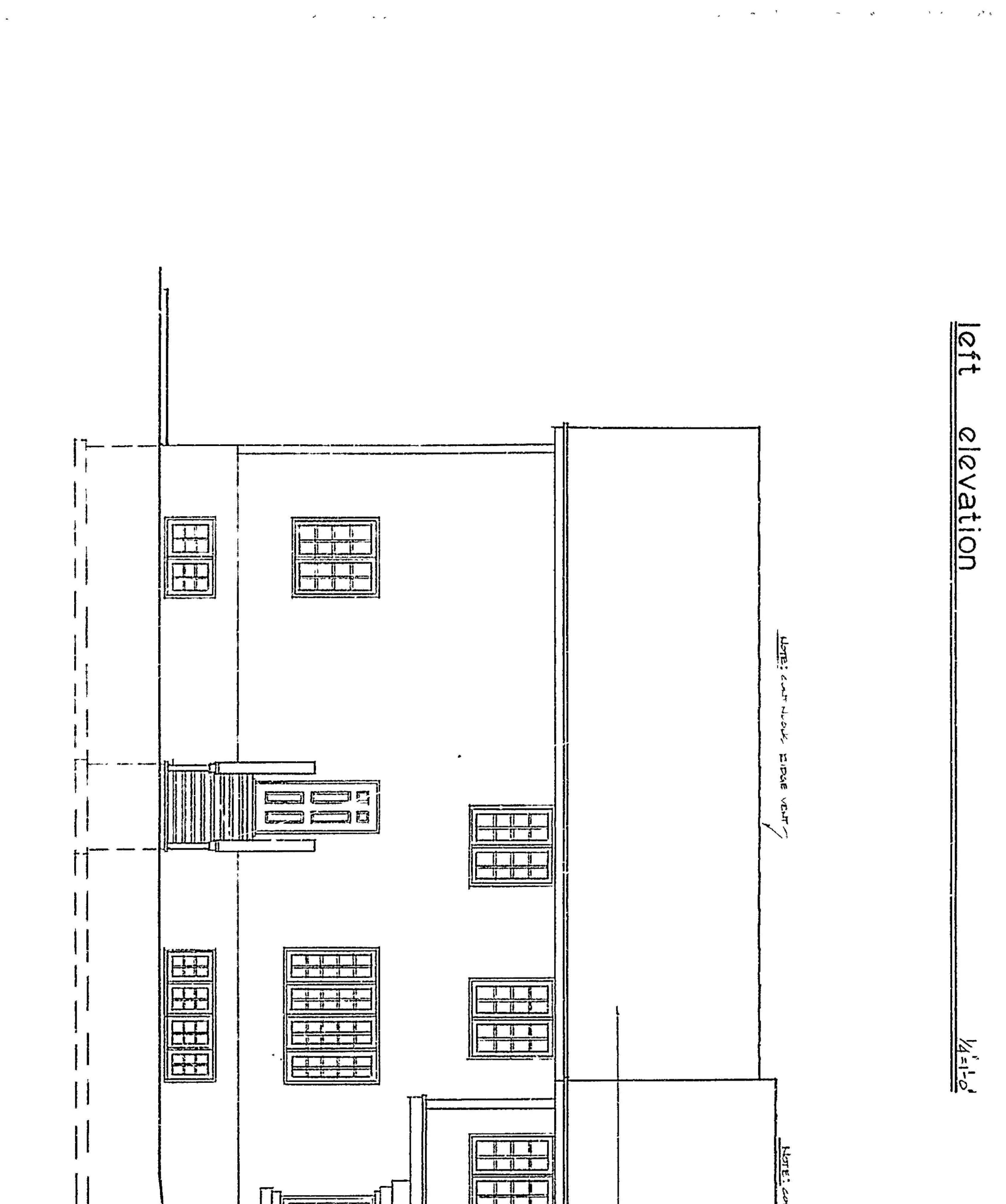
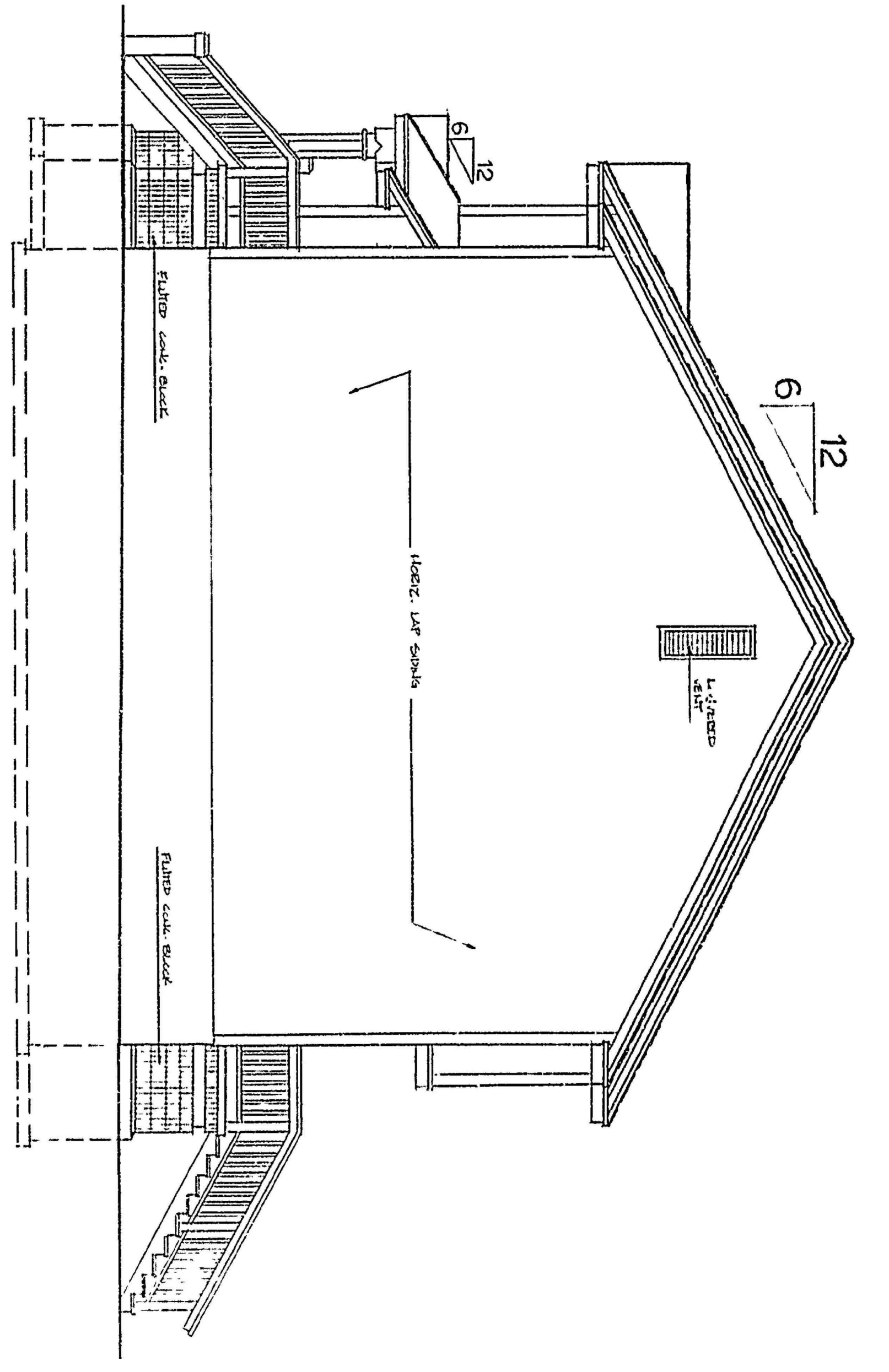
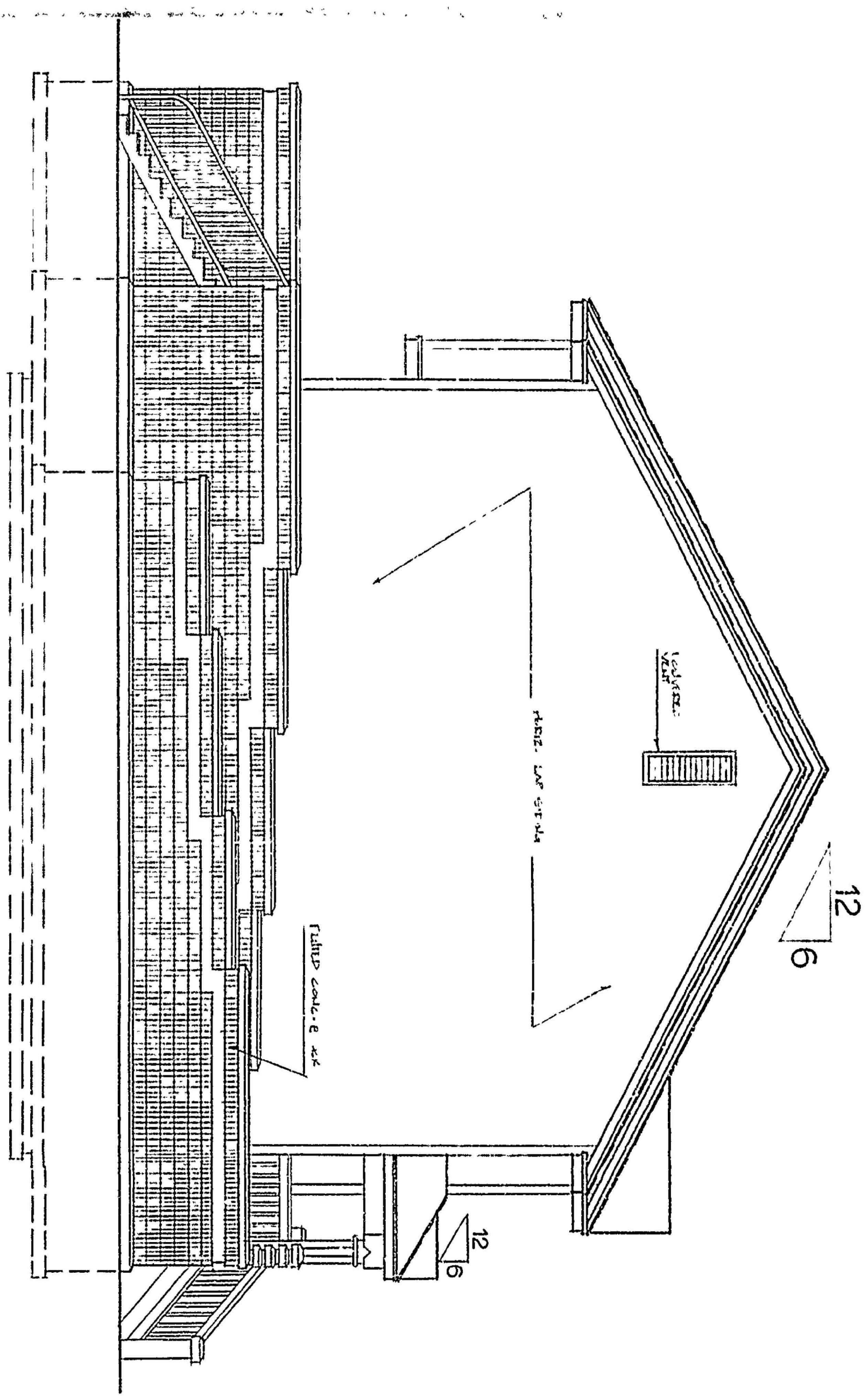
Thomas McInerney
ARCHITECT

3 1 9 . 3 3 1 . 0 3 6 5

1208 Mary Street Iowa City, Iowa 52240
www.thomasarchitect.com
thomas@thomasarchitect.com

Consultants:

IEI INNOVATIVE ENGINEERS, INC.
2871 Heinz Rd. Suite B, Iowa City, IA 52240
T 319.855.4115 | F 319.351.0070
www.innovativeengineersinc.com



Project:

DVIP
Restroom
Remodel
IOWA CITY, IOWA

Project number: 15-42

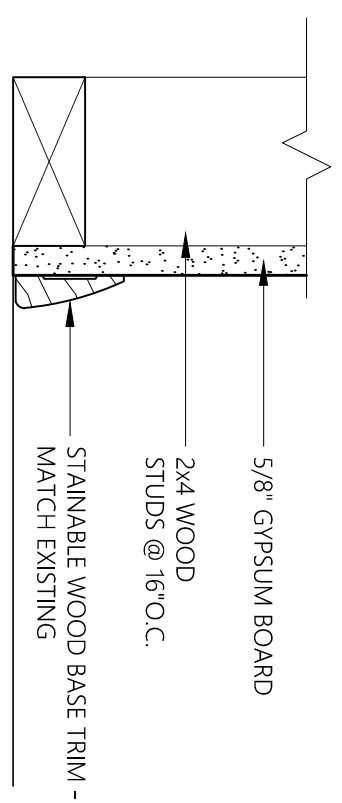
Note: © COPYRIGHT 2016
UNAUTHORIZED COPYING, DISCLOSURE OR
CONSTRUCTION WITHOUT WRITTEN
PERMISSION BY THOMAS MCINERNEY,
ARCHITECT, IS STRICTLY PROHIBITED.
Issue date: Description
JAN 26 2016 BID DOCUMENTS

Sheet Title:

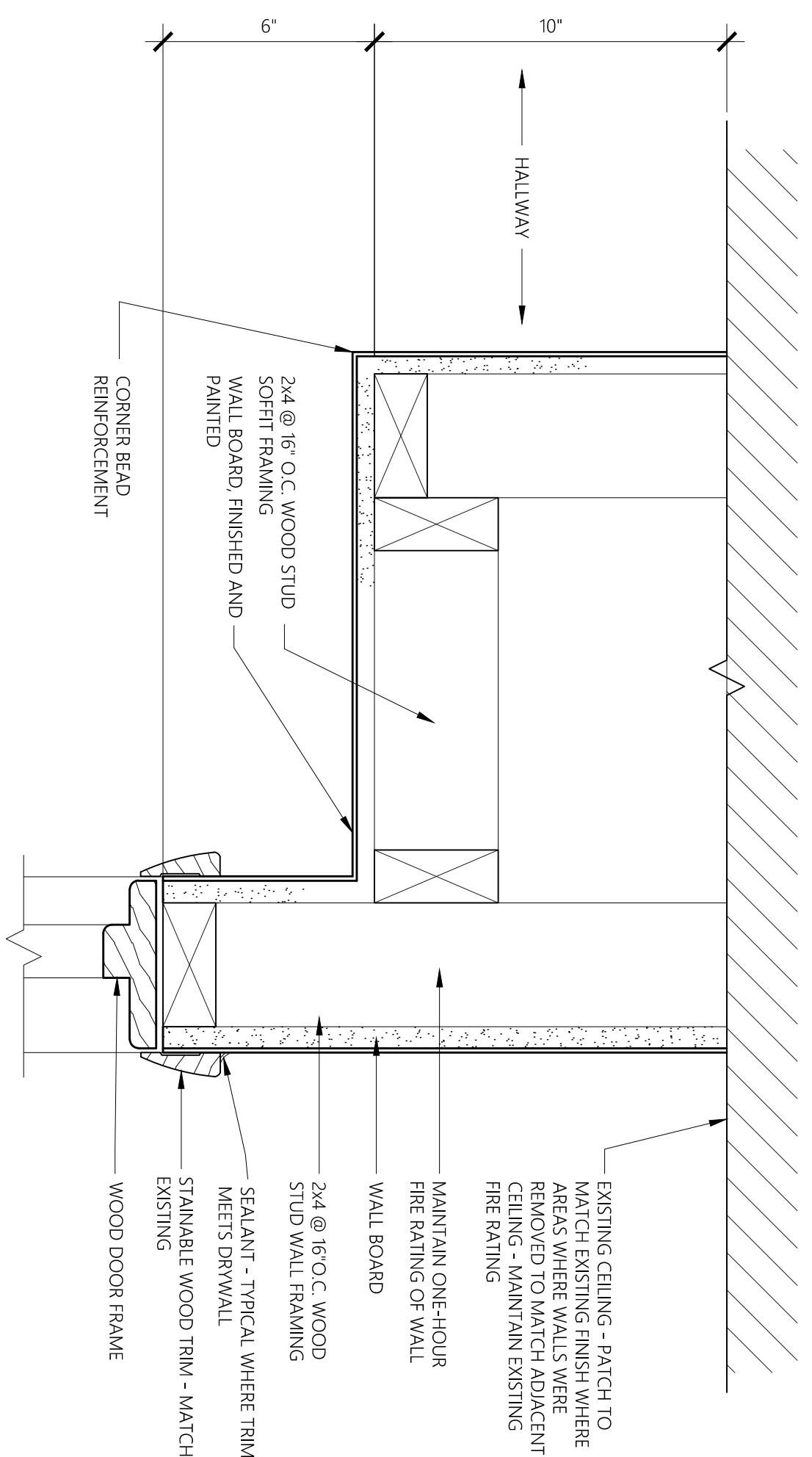
EXTERIOR
ELEVATIONS

Sheet Number:

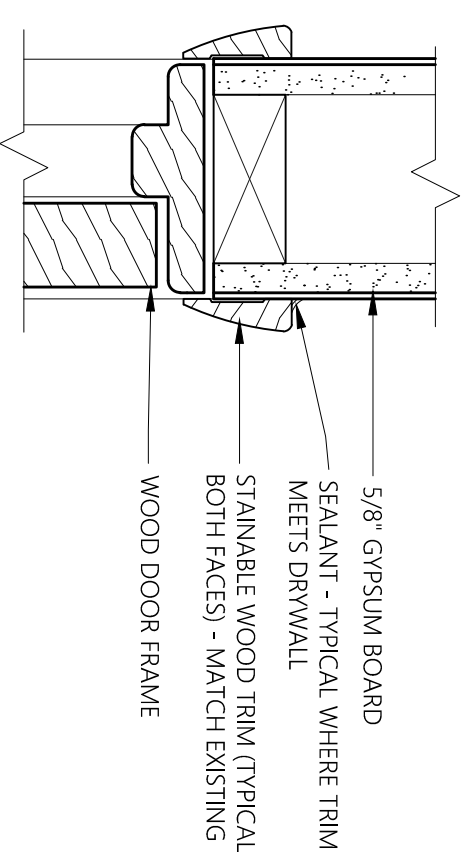
A-402



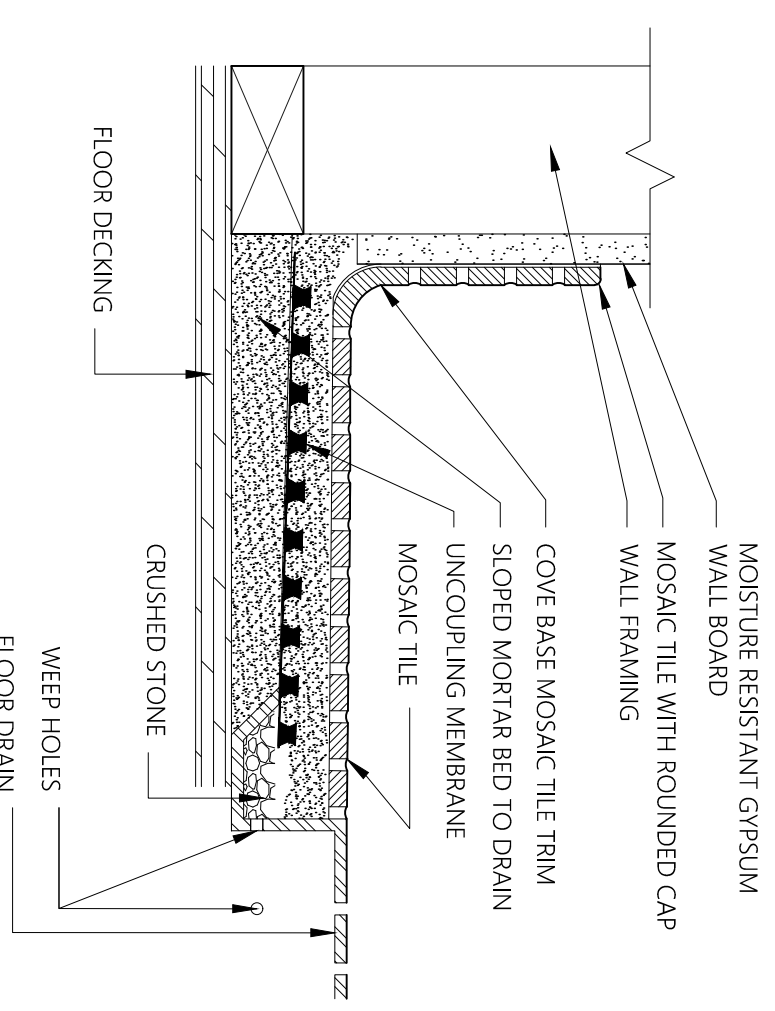
D1 SECTION @ WOOD WALL BASE
3\"/>



C1 DETAIL
3\"/>



B1 TYPICAL SECTION @ DOOR HEAD / JAMB
3\"/>



A1 SECTION @ FLOOR DRAIN AND WALL BASE
3\"/>

ROOM NO.	FLR	Base	WALL FINISH AND TYPE				CEILING		NOTES
			NORTH	SOUTH	EAST	WEST	MATL	Height	
207	RESTROOM	T-1	T-1	PNT-1	PNT-1	PNT-2	GYP	8'-0"	--
208	RESTROOM	T-1	T-1	PNT-1	PNT-1	PNT-2	GYP	8'-0"	--
209	RESTROOM	T-1	T-1	PNT-1	PNT-1	PNT-2	GYP	8'-0"	--
210	HALLWAY	T-1	T-1	PNT-1	PNT-1	PNT-2	GYP	8'-0"	--
211	LAUNDRY	T-1	T-1	PNT-1	PNT-1	GYP	8'-0"	--	--
222	RESTROOM	T-1	T-1	PNT-1	PNT-1	PNT-2	GYP	8'-0"	--
233	RESTROOM	T-1	T-1	PNT-1	PNT-1	PNT-2	GYP	8'-0"	--
234	RESTROOM	T-1	T-1	PNT-1	PNT-1	PNT-2	GYP	8'-0"	--
235	HALLWAY	T-1	T-1	PNT-1	PNT-1	PNT-2	GYP	8'-0"	--
236	LAUNDRY	T-1	T-1	PNT-1	PNT-1	PNT-2	GYP	8'-0"	--
251	ALCOVE	T-1	T-1	PNT-1	PNT-1	PNT-1	GYP	8'-0"	--
252	CLOSET	EXIST	EXIST	PNT-1	PNT-1	PNT-1	GYP	8'-0"	1
253	CLOSET	EXIST	EXIST	PNT-1	PNT-1	PNT-1	GYP	8'-0"	1
254	ALCOVE	T-1	T-1	PNT-1	PNT-1	PNT-1	GYP	8'-0"	--

ROOM FINISH SCHEDULE

ABBREVIATION LEGEND:

- T-1 PATCH AREAS WHERE WALLS AND FIXTURES WERE REMOVED. PROVIDE MOSAIC FLOOR AND WALL TILE MANUFACTURED BY AMERICAN OLEFIN.
- T-1* UNGLAZED COLORBODDY PORCELAIN COLOR: A68 'SNOW LEOPARD'
- GROUP: GRAY, UNSANDED
- PROVIDE T-1* CERAMIC TILE OVER DECOLORING MEMBRANE - TYPICAL AT FLOOR.
- SEE DETAIL AT THIS SHEET FOR TILE AT WALL BASE AND AROUND FLOOR DRAIN.
- WHERE WALL BASE IS TO BE PROVIDED, PROVIDE AND MATCH EXISTING 5\"/>

ABBREVIATION LEGEND:

- PNT-1 PAINT - COLOR #1 (MATCHING MOSAIC COLOR AS APPROVED BY ARCHITECT)
- PNT-2 PAINT - COLOR #2 (MATCHING MOSAIC COLOR AS APPROVED BY ARCHITECT)
- GYP EXISTING GYPSUM WALL BOARD WITH TEXTURED 'POPCORN' FINISH -
- 1. PATCH TO MATCH WHERE WALLS WERE REMOVED
- 2. MAINTAIN EXISTING FIRE RATING

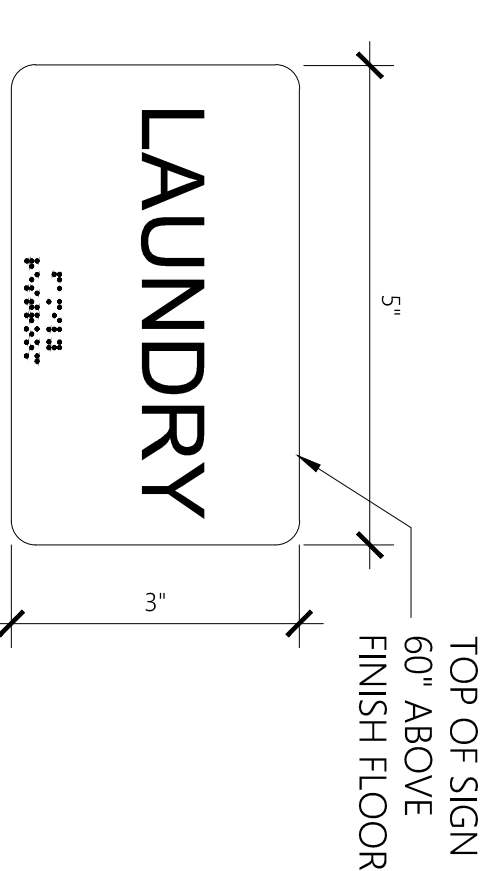
PROVIDE Non-Ceramic Trim: Satin-finished anodized aluminum, style and dimensions to suit application, for setting using the mortar or adhesive manufacturer's instructions. Schluter Systems, L.P., 194 Pleasant Ridge Road, Plattsburgh, NY 12901-5541, Tel: (800) 472-4588, Fax: (800) 477-9783, E-mail: speccassis@schluter.com, Internet: www.schluter.com.

Use in the following locations:
Transition between floor finishes: "R8NC-TK"
Transition between tub and wall: "DILEX-AS".

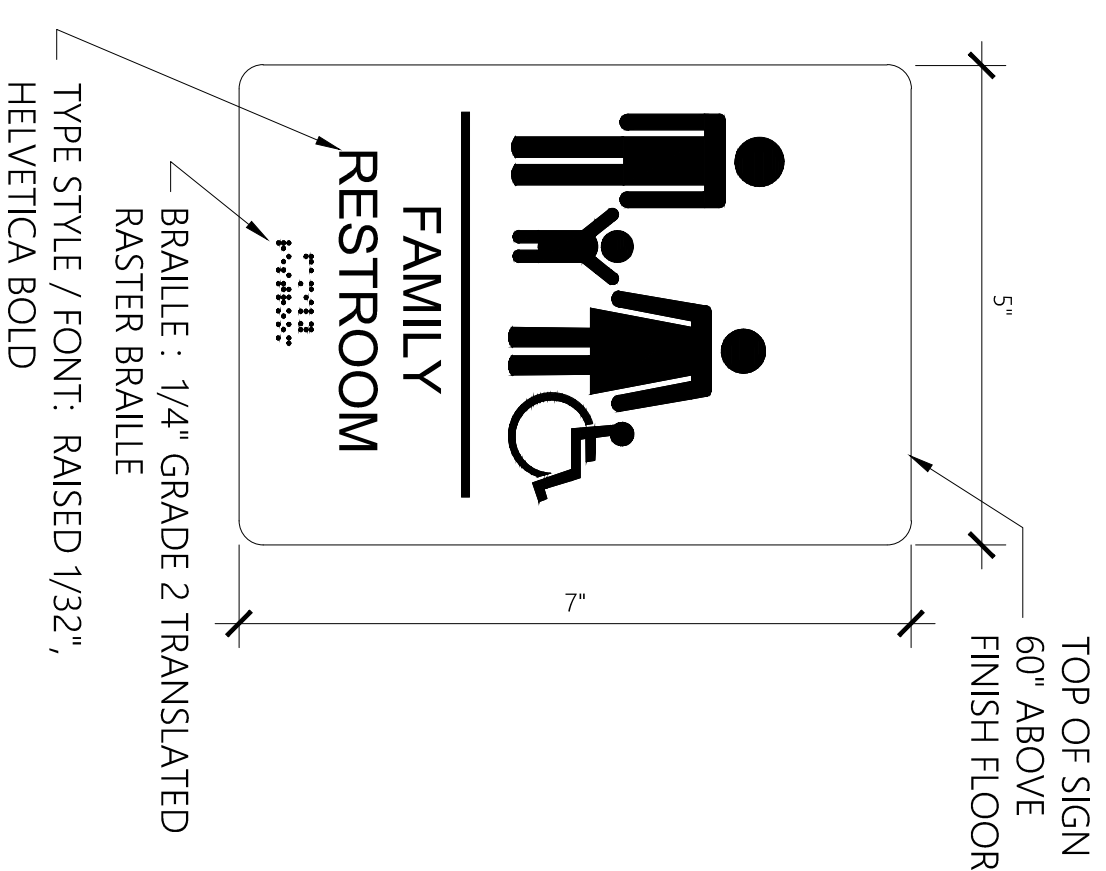
DOOR AND FRAME SCHEDULE

NO.	ROOM	Style	SIZE-PR WxH	DOOR MAT. FIN.	HARDWARE	FrameType	Fire Rating	NOTES
207A	RESTROOM	Hinged - Single	3'-0" x 6'-6"	WOOD STAIN	2	WOOD	-	1
208A	RESTROOM	Hinged - Single	3'-0" x 6'-6"	WOOD STAIN	2	WOOD	-	1
209A	RESTROOM	Hinged - Single	3'-0" x 6'-6"	WOOD STAIN	1	WOOD	-	1
210A	HALLWAY	Hinged - Single	3'-0" x 6'-6"	WOOD STAIN	1	WOOD	20 MIN	1
211A	LAUNDRY	Hinged - Single	3'-0" x 6'-6"	WOOD STAIN	2	WOOD	-	1
232A	RESTROOM	Hinged - Single	3'-0" x 6'-6"	WOOD STAIN	2	WOOD	-	1
233A	RESTROOM	Hinged - Single	3'-0" x 6'-6"	WOOD STAIN	2	WOOD	-	1
234A	RESTROOM	Hinged - Single	3'-0" x 6'-6"	WOOD STAIN	1	WOOD	20 MIN	1
235A	RESTROOM	Hinged - Single	3'-0" x 6'-6"	WOOD STAIN	1	WOOD	20 MIN	1
236A	LAUNDRY	Hinged - Single	3'-0" x 6'-6"	WOOD STAIN	1	WOOD	20 MIN	1
252B	CLOSET	Hinged - Single	2'-4" x 6'-9"	EXIST	-	-	-	2
253B	CLOSET	Hinged - Single	2'-4" x 6'-9"	EXIST	-	-	-	2

- NOTES:
- PROVIDE WOOD TRIM AT JAMB AND HEAD. SEE DETAIL B1 THIS SHEET.
 - SAVAGE EXISTING CLOSET DOOR WITH TRIM AND RELOCATE AS INDICATED ON PLANS.



C4 SIGNAGE DETAIL
SCALE: 6" = 1'-0"



A4 SIGNAGE DETAIL
SCALE: 6" = 1'-0"

Architect:

Thomas McInerney
ARCHITECT

3 1 9 . 3 3 1 . 0 3 6 5
1208 Marcy Street Iowa City, Iowa 52240
www.thomasarchitect.com
thomas@thomasarchitect.com

Consultants:

IEI INNOVATIVE ENGINEERS, INC.
2871 Heinz Rd. Suite B, Iowa City, IA 52240
T. 319.855.4115 | F. 319.351.0070
www.innovativeengineersinc.com

Project: **DVIP Restroom Remodel**
IOWA CITY, IOWA

Project number: 15.42

Note: © COPYRIGHT 2016 UNAUTHORIZED COPYING, DISCLOSURE OR CONSTRUCTION WITHOUT WRITTEN PERMISSION BY THOMAS MCINERNEY ARCHITECT, IS STRICTLY PROHIBITED.
Issue date: Description
JAN 26, 2016 BID DOCUMENTS

Sheet Title: **DETAILS & SCHEDULES**

Sheet Number:

A-501

Architect:

Thomas McInerney
ARCHITECT

319.331.0365
1208 Nancy Street Iowa City, Iowa 52240
www.thomasarchitect.com
thomas@thomasarchitect.com

Consultants:

IEI INNOVATIVE ENGINEERS, INC.
2871 Heinz Rd. Suite B, Iowa City, IA 52240
T 319.855.4115 | F 319.351.0070
www.innovativeengineersinc.com

LIGHTING CONTROLS

SYMBOL	DESCRIPTION
⊕	SINGLE PILE (DWER CASE LETTER INDICATES SWITCH LEG)
⊕3	THREE WAY
⊕D	DIMMER
⊕S	INFRARED SENSOR
⊕U	ULTRASONIC SENSOR

LIGHTING FIXTURES

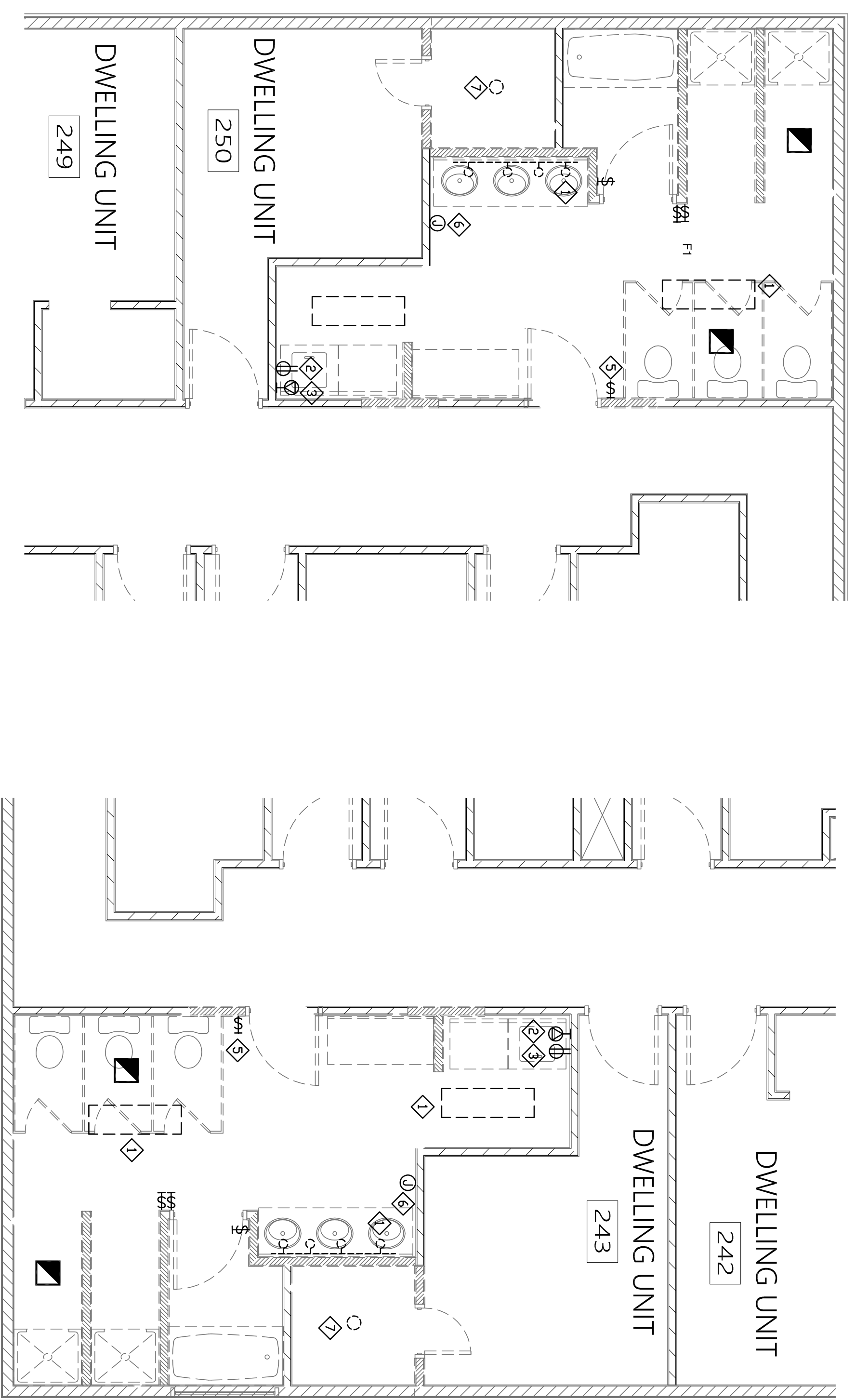
SYMBOL	DESCRIPTION
⊕	FIXTURE TYPE
⊕-F1	FIXTURE-RELAY
⊕-23-1	CIRCUIT-RELAY
⊕-a	CONTROL DEVICE
EM	FIXTURE ON EMERGENCY BATTERY BACKUP
□	SURFACE MOUNTED FIXTURE
○	RECESSED MOUNTED FIXTURE
⊕	EXIT SIGN - FACES AND ARROWS AS SHOWN
⊕↔	BATTERY PACK EMERGENCY LIGHTING
⊕	JUNCTION BOX
⊕OV	VISUAL ALARM

ELECTRICAL KEYED NOTES

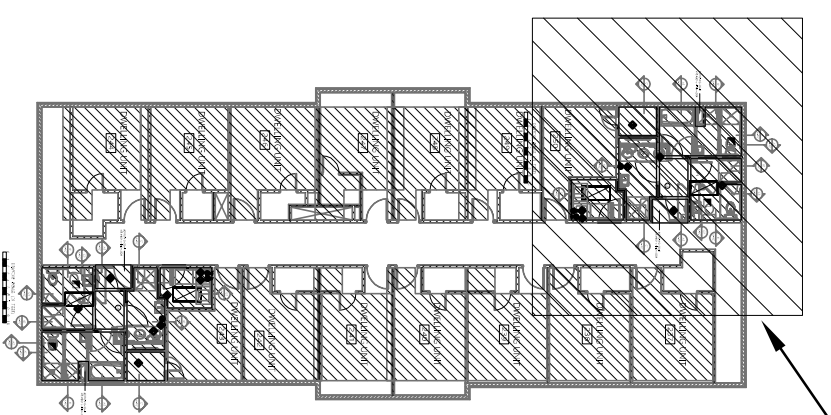
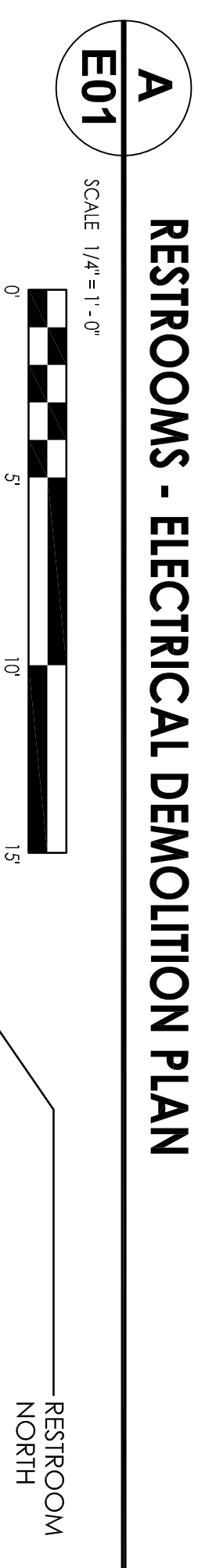
1	EXISTING LIGHT FIXTURE TO BE REMOVED. MAINTAIN EXISTING CIRCUIT TO FEED NEW LIGHTS (TYPICAL).
2	EXISTING DRYER RECEPTACLE TO REMAIN...
3	EXISTING WASHER RECEPTACLE TO REMAIN.
4	EXISTING SMOKE DETECTOR TO REMAIN.
5	EXISTING SWITCH TO BE REMOVED (TYPICAL).
6	EXISTING HAND DRYER TO BE REMOVED. REUSE SAME CIRCUIT TO SERVE GFI RECEPTACLE TO BE INSTALLED IN THE SAME LOCATION. REFERENCE SHEET E02 FOR NEW LOCATION. REUSE EXISTING CIRCUIT.
7	RELOCATE EXISTING FIXTURE TO THIS LOCATION. REFERENCE SHEET E02 FOR NEW LOCATION. REUSE EXISTING CIRCUIT.

GENERAL ELECTRICAL DEMOLITION NOTES:

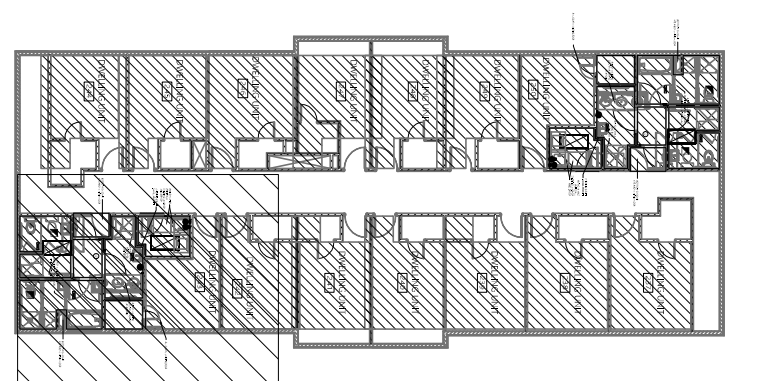
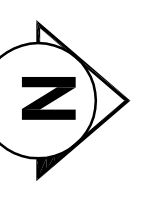
1. E.C. SHALL VERIFY THE EXISTING CONDITIONS AT THE PROJECT SITE BEFORE SUBMITTING COST PROPOSAL.
2. THE E.C. SHALL VISIT THE SITE TO VERIFY DEVICES AND EQUIPMENT NOT SHOWN.
3. ELECTRICAL CONTRACTOR SHALL BE RESPONSIBLE FOR HIS OWN DEMOLITION, REMOVAL, CAPPING, ABANDONING, DISCONNECTING OF EXISTING ELECTRICAL EQUIPMENT AND MATERIAL. ALL CUTTING, PATCHING, REPAIRING, REPLACEMENT AND REFINISHING, SHALL MATCH THE EXISTING CONSTRUCTION AS NEARLY AS POSSIBLE.
4. THE OWNER SHALL HAVE THE FIRST CHOICE TO ACCEPT EXISTING DEVICES AND EQUIPMENT BEING REMOVED AND NOT REUSED.



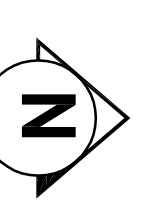
RESTROOMS - ELECTRICAL DEMOLITION PLAN



KEY PLAN - SECOND FLOOR
SCALE: NTS



KEY PLAN - SECOND FLOOR
SCALE: NTS



Issue date: Description
JAN. 26, 2016 BID DOCUMENTS

Project :
DVIP
Restroom
Remodel
IOWA CITY, IOWA

Project number: 15.42

Note: ○ COPYRIGHT 2015
UNAUTHORIZED COPYING, DISCLOSURE OR
CONSTRUCTION WITHOUT WRITTEN
PERMISSION BY THOMAS MCINERNEY,
ARCHITECT, IS STRICTLY PROHIBITED.

Sheet Title:
ELECTRICAL
-DEMOLITION
WORK

Sheet Number:

E01

Architect:

Thomas McInerney
ARCHITECT

319.331.0365
1208 Nancy Street Iowa City, Iowa 52240
www.thomasarchitect.com
thomas@thomasarchitect.com

Consultants:

IEI INNOVATIVE ENGINEERS, INC.
2871 Heinz Rd. Suite B, Iowa City, IA 52240
T 319.855.4115 | F 319.351.0070
www.innovativeengineersinc.com

LIGHTING CONTROLS

SYMBOL	DESCRIPTION
⊕	SINGLE PILE (DWER CASE LETTER INDICATES SWITCH LEG)
⊕3	THREE WAY
⊕D	DIMMER
⊕S	INFARED SENSOR
⊕U	ULTRASONIC SENSOR
⊕D	WALL MOUNTED DUAL TECHNOLOGY SENSOR

LIGHTING FIXTURES

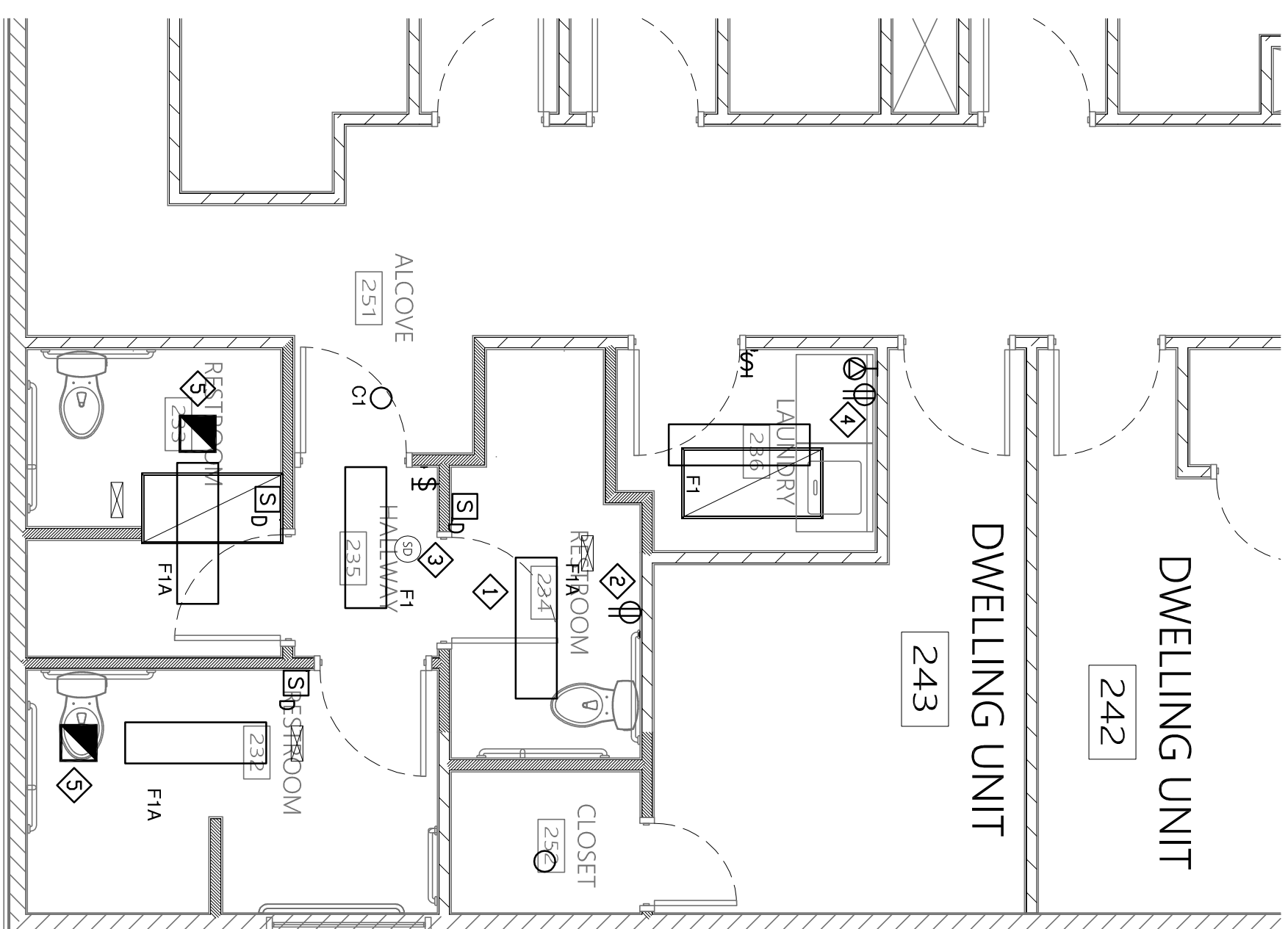
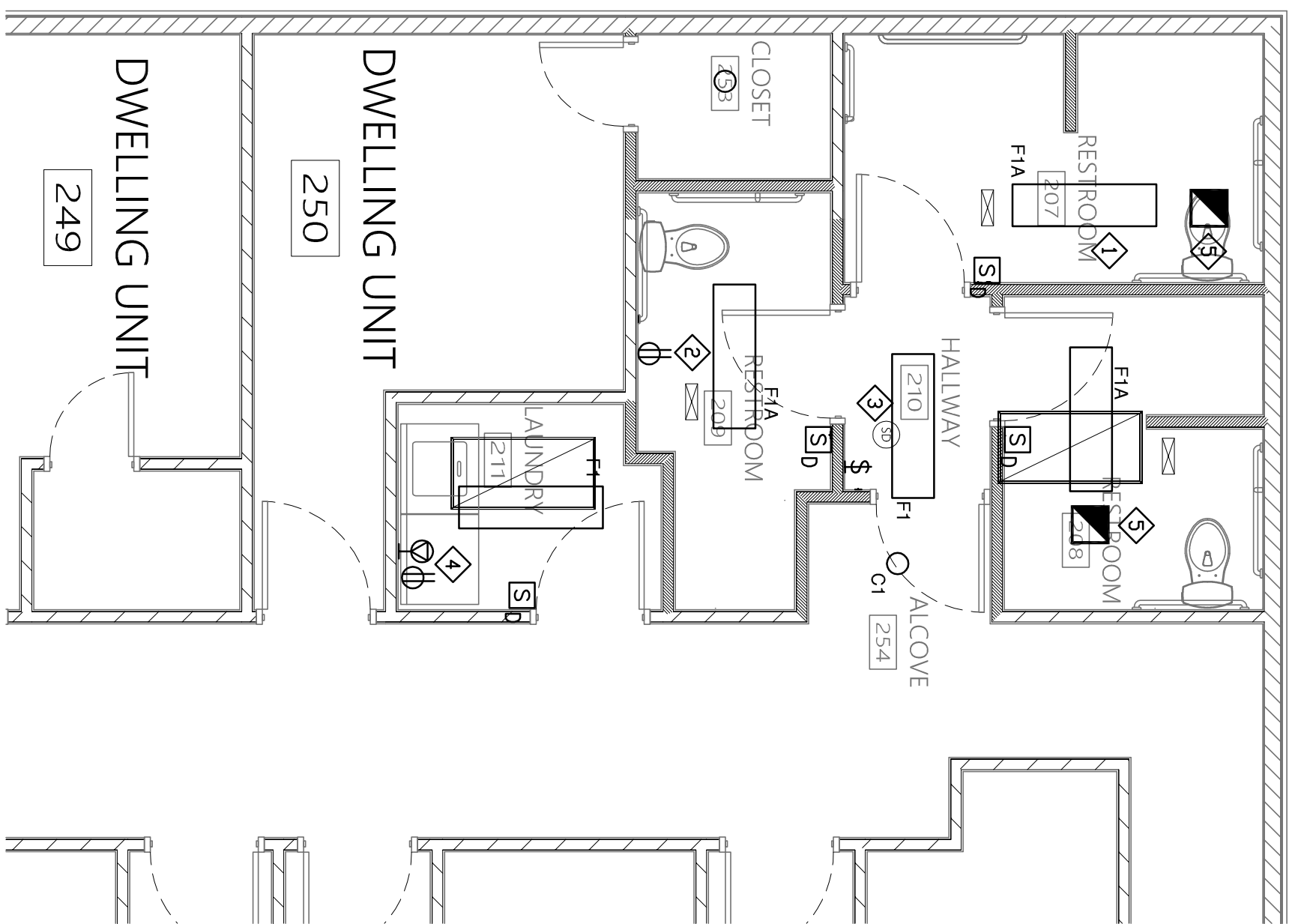
SYMBOL	DESCRIPTION
⊕	FIXTURE TYPE
⊕-23-1	FIXTURE-RELAY
⊕	CIRCUIT-RELAY
⊕	CONTROL DEVICE
⊕	EM FIXTURE ON EMERGENCY BATTERY BACKUP
⊕	SURFACE MOUNTED FIXTURE
⊕	RECESSED MOUNTED FIXTURE
⊕	EXIT SIGN - FACES AND ARROWS AS SHOWN
⊕	BATTERY PACK EMERGENCY LIGHTING
⊕	JUNCTION BOX

ELECTRICAL KEYED NOTES

1	PROVIDE NEW LIGHT FIXTURES AS SHOWN (REFER TO LIGHT FIXTURE SCHEDULE FOR ADDITIONAL INFORMATION). CONNECT FIXTURE TO EXISTING LIGHTING CIRCUIT. THE EXHAUST FAN (NOT SHOWN) TO LIGHT FIXTURE SWITCH(TYPICAL).
2	PROVIDE NEW GFI RECEPTACLE. REUSE EXISTING CIRCUIT FROM REMOVED HAND DRYER.
3	EXISTING SMOKE DETECTOR TO REMAIN.
4	EXISTING WASHER AND DRYER ELECTRICAL OUTLETS TO REMAIN.
5	EXHAUST FAN TO BE PROVIDED BY M.C. IN THE SAME LOCATION AS EXISTING FAN. PROVIDE FINAL CONNECTIONS.

GENERAL ELECTRICAL NOTES:

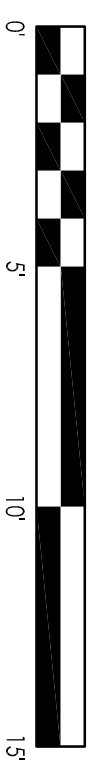
1. ALL BRANCH CIRCUITS SHALL HAVE GROUND CONDUCTORS.
2. PROVIDE SEPARATE NEUTRAL FOR EACH BRANCH CIRCUIT PHASE CONDUCTOR.
3. NON-METALLIC SHEATHED CABLES (NM & NM-C) IS ALLOWED AS PERMITTED PER NEC REGULATIONS AND LOCAL ADOPTED HAVING JURISDICTION.
4. EXISTING POWER, LIGHTING, AND CIRCUITRY NOT SHOWN ON DRAWING IS TO REMAIN.
5. EXIT LIGHTS AND EMERGENCY LIGHTS TO BE FED FROM UNSWITCHED LIGHTING CIRCUIT.



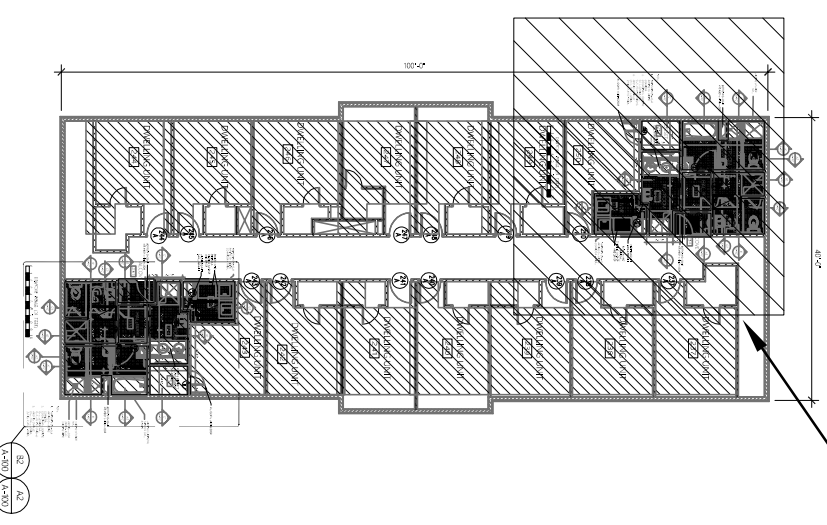
A RESTROOMS - ELECTRICAL NEW PLAN

E01

SCALE 1/4"=1'-0"

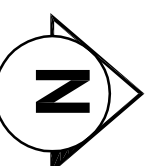


RESTROOM NORTH



KEY PLAN - SECOND FLOOR

SCALE: NTS

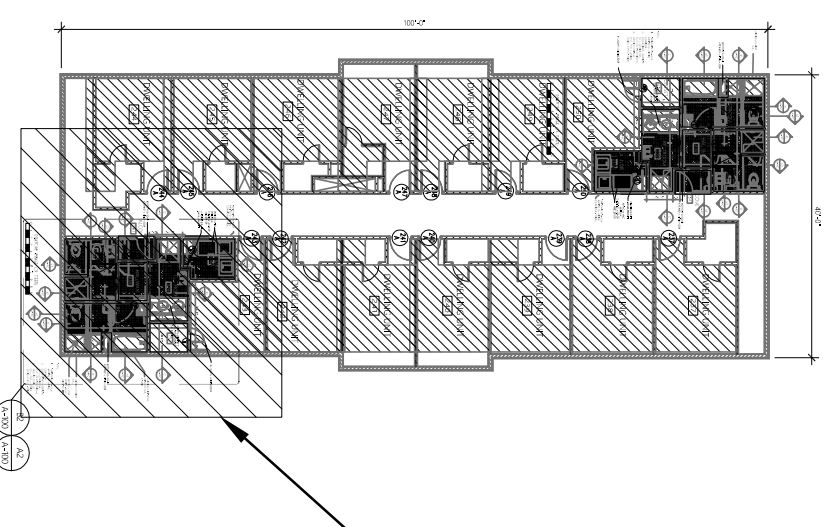


KEY PLAN - SECOND FLOOR

SCALE: NTS



RESTROOM SOUTH



Architect:

Thomas McInerney
ARCHITECT

319.331.0365
1208 Nancy Street Iowa City, Iowa 52240
www.thomasarchitect.com
thomas@thomasarchitect.com

Consultants:

IEI INNOVATIVE ENGINEERS, INC.
2871 Heinz Rd. Suite B, Iowa City, IA 52240
T 319.855.4115 | F 319.351.0070
www.innovativeengineersinc.com

LIGHTING CONTROLS

SYMBOL	DESCRIPTION
⊕	SINGLE PILE (DWER CASE LETTER INDICATES SWITCH LEG)
⊕3	THREE WAY
⊕D	DIMMER
⊕S	INFARED SENSOR
⊕U	ULTRASONIC SENSOR
⊕D	WALL MOUNTED DUAL TECHNOLOGY SENSOR

LIGHTING FIXTURES

SYMBOL	DESCRIPTION
⊕	FIXTURE TYPE
⊕-23-1	FIXTURE-RELAY
⊕	CIRCUIT-RELAY
⊕	CONTROL DEVICE
⊕	EM FIXTURE ON EMERGENCY BATTERY BACKUP
⊕	SURFACE MOUNTED FIXTURE
⊕	RECESSED MOUNTED FIXTURE
⊕	EXIT SIGN - FACES AND ARROWS AS SHOWN
⊕	BATTERY PACK EMERGENCY LIGHTING
⊕	JUNCTION BOX

ELECTRICAL KEYED NOTES

1	PROVIDE NEW LIGHT FIXTURES AS SHOWN (REFER TO LIGHT FIXTURE SCHEDULE FOR ADDITIONAL INFORMATION). CONNECT FIXTURE TO EXISTING LIGHTING CIRCUIT. THE EXHAUST FAN (NOT SHOWN) TO LIGHT FIXTURE SWITCH(TYPICAL).
2	PROVIDE NEW GFI RECEPTACLE. REUSE EXISTING CIRCUIT FROM REMOVED HAND DRYER.
3	EXISTING SMOKE DETECTOR TO REMAIN.
4	EXISTING WASHER AND DRYER ELECTRICAL OUTLETS TO REMAIN.
5	EXHAUST FAN TO BE PROVIDED BY M.C. IN THE SAME LOCATION AS EXISTING FAN. PROVIDE FINAL CONNECTIONS.

GENERAL ELECTRICAL NOTES:

1. ALL BRANCH CIRCUITS SHALL HAVE GROUND CONDUCTORS.
2. PROVIDE SEPARATE NEUTRAL FOR EACH BRANCH CIRCUIT PHASE CONDUCTOR.
3. NON-METALLIC SHEATHED CABLES (NM & NM-C) IS ALLOWED AS PERMITTED PER NEC REGULATIONS AND LOCAL ADOPTED HAVING JURISDICTION.
4. EXISTING POWER, LIGHTING, AND CIRCUITRY NOT SHOWN ON DRAWING IS TO REMAIN.
5. EXIT LIGHTS AND EMERGENCY LIGHTS TO BE FED FROM UNSWITCHED LIGHTING CIRCUIT.

Project :
DVIP
Restroom
Remodel
IOWA CITY , IOWA

Project number: 15.42

Note: ○ COPYRIGHT 2015
UNAUTHORIZED COPYING, DISCLOSURE OR
CONSTRUCTION WITHOUT WRITTEN
PERMISSION BY THOMAS MCINERNEY,
ARCHITECT, IS STRICTLY PROHIBITED.

Issue date: Description
JAN. 26, 2016 BID DOCUMENTS

Sheet Title:

ELECTRICAL
-NEW WORK

Sheet Number:

E02

Architect:

Thomas McInerney
ARCHITECT

319.331.0365

1208 Marcy Street Iowa City, Iowa 52240
www.thomasarchitect.com
thomas@thomasarchitect.com

Consultants:

IEI INNOVATIVE ENGINEERS, INC.
2871 Heinz Rd, Suite B, Iowa City, IA 52240
T 319.855.4115 | F 319.351.0070
www.innovativeengineersinc.com

Project:

DVIP
Restroom
Remodel
IOWA CITY, IOWA

Project number: 15.42

Note: ©COPYRIGHT 2015
UNAUTHORIZED COPYING, DISCLOSURE OR
CONSTRUCTION WITH THIS LICENSE
PERMISSION BY THOMAS MCINERNEY,
ARCHITECT, IS STRICTLY PROHIBITED.

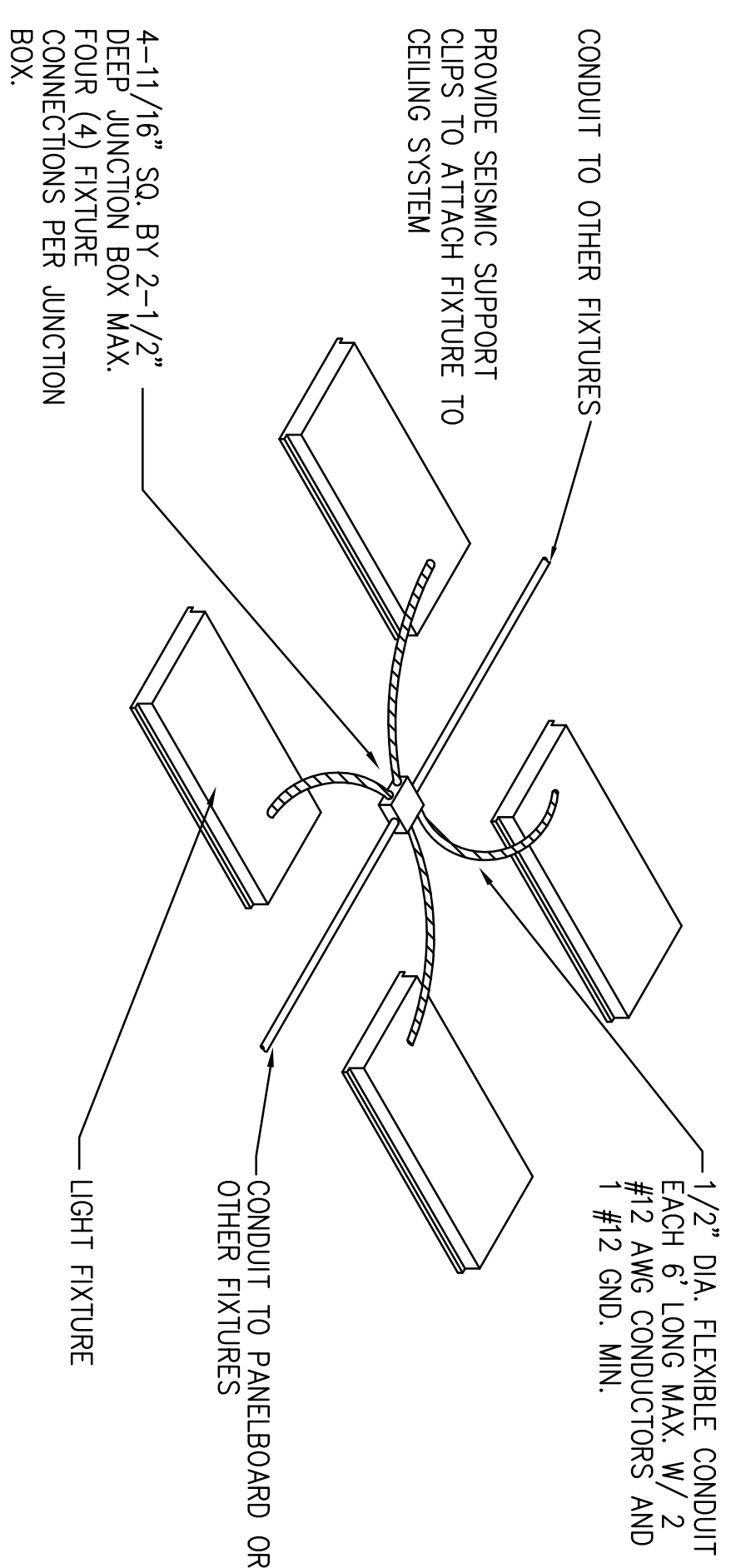
Issue date: Description
JAN. 26, 2016 BID DOCUMENTS

Sheet Title:

ELECTRICAL -
NOTES &
DETAILS

Sheet Number:

E03



A TYPICAL RECESSED LIGHT FIXTURE WIRING DETAIL
ND SCALE
E03

GENERAL ELECTRICAL NOTES

1. ALL WORK SHALL BE DONE IN ACCORDANCE WITH THE NATIONAL ELECTRICAL CODE (N.E.C.) AND GOVERNING MUNICIPAL, STATE AND LOCAL CODES. ALL MATERIAL SHALL BE NEW AND SHALL BEAR THE U.L. LABEL WHERE APPLICABLE.
2. CONTRACTOR SHALL MAKE ALL NECESSARY, CUTTING AND DO ALL THE REPATCHING AS NECESSARY FOR THE PROPER EXECUTION OF THIS WORK.
3. AFTER COMPLETION OF THE INSTALLATION, THE SYSTEM SHALL TEST FREE FROM SHORT CIRCUITS AND GROUNDS.
4. WHERE ELECTRICAL CONDUCTORS ARE INSTALLED IN CONDUIT, THE CONDUIT SHALL COMPLY WITH THE N.E.C. REQUIREMENTS.
5. ALL CONDUCTOR SHALL BE COPPER. NO CONDUCTOR SHALL BE SMALLER THAN #12 AWG AND SHALL BE RATED FOR 600VOLTS THWN OR THHN INSULATION. INSTALL A GROUNDING CONDUCTOR WITH ALL CIRCUITS, UNLESS NOTED OTHERWISE, SIZED PER N.E.C.250-122.
6. VERIFY BREAKER AND CORRESPONDING WIRE SIZES FOR ALL ELECTRICAL EQUIPMENT. DONOT ORDER MATERIAL BEFORE VERIFYING BREAKER & WIRE SIZE. REPORT ANY DISCREPANCY IMMEDIATELY TO THE ENGINEER OF RECORD.
7. IT IS NOT THE INTENT OF THESE PLANS TO SHOW EVERY MINOR DETAIL OF CONSTRUCTION. THE CONTRACTOR IS EXPECTED TO FURNISH AND INSTALL ALL ITEMS FOR A COMPLETE ELECTRICAL SYSTEM AND PROVIDE ALL REQUIREMENTS NECESSARY FOR EQUIPMENT TO BE PLACED IN PROPER WORKING ORDER.
8. ALL WORK SHALL BE PERFORMED BY A LICENSED ELECTRICAL CONTRACTOR IN A FIRST CLASS WORKMANLIKE MANNER. THE COMPLETED SYSTEM SHALL BE FULLY OPERATIVE AND ACCEPTED BY THE OWNER.
9. ALL BRANCH CIRCUITS SHALL HAVE GROUND CONDUCTORS.
10. THE ELECTRICAL CONTRACTOR SHALL PROVIDE, IF REQUIRED, ADJUSTMENTS (±) 6'-0" IN THE LOCATION OF ALL SYSTEM DEVICES, FIXTURES, OUTLETS, PANELS, ETC. IN ORDER TO EXPEDITE THE ELECTRICAL WORK. THE POSITION OF ALL WORK AS SHOWN IS INTENDED TO BE FIXED AND IN THE PROPER LOCATION. SUCH REQUIRED ADJUSTMENT SHALL BE DETERMINED BY THE A/E.
11. PROVIDE SEPARATE NEUTRAL FOR EACH BRANCH CIRCUIT PHASE CONDUCTOR.

LIGHTING FIXTURE SCHEDULE										
MARK	FIXTURE TYPE	DIFFUSER	VOLT	LAMP		MOUNTING		MANUFACTURER	REMARKS	
				# & WATTS	TYPE	HT.	CELG.	NAME	SERIES NO.	
F1	WRAPAROUND	N/A	120	LED 4000 LUMN	LED 30K		CELG	DAVBRITE WILLIAMS	OWL 17	4 LONG
F1A	WRAPAROUND	N/A	120	LED 4000 LUMN	LED 30K		CELG	DAVBRITE WILLIAMS	OWL 17	PROVIDE EMERGENCY BALLAST 4 LONG
C1	6" DOWNLIGHT	OPEN	120	2000 LUM	LED 40K		RECESS CELG	LIGHTQUIER WILLIAMS	CEB20 EQUAL	
ELECTRICAL CONTRACTOR IS RESPONSIBLE FOR TRAIL TYPES COORDINATE WITH REFLECTED CEILING PLANS										

Architect:

Thomas McInerney
ARCHITECT

319.331.0365

1208 Nancy Street Iowa City, Iowa 52240
www.thomasarchitect.com
thomas@thomasarchitect.com

Consultants:

IEI INNOVATIVE ENGINEERS, INC.
2071 Heitz Rd, Suite B, Iowa City, IA 52240
T 319.353.4119 | F 319.351.0070
www.innovativeengineersinc.com

Architect:

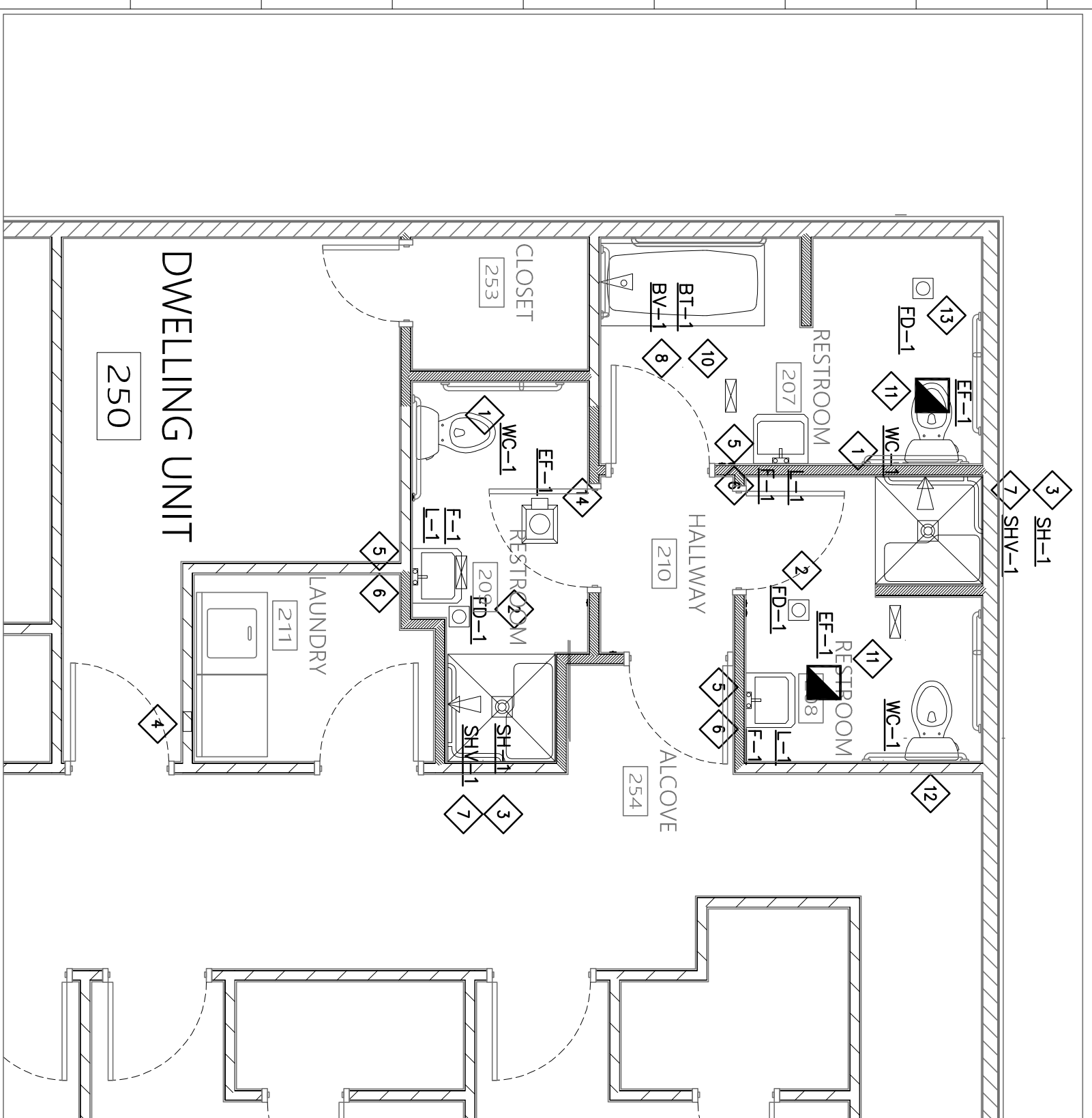
Thomas McInerney
ARCHITECT

319.331.0365

1208 Nancy Street Iowa City, Iowa 52240
www.thomasarchitect.com
thomas@thomasarchitect.com

Consultants:

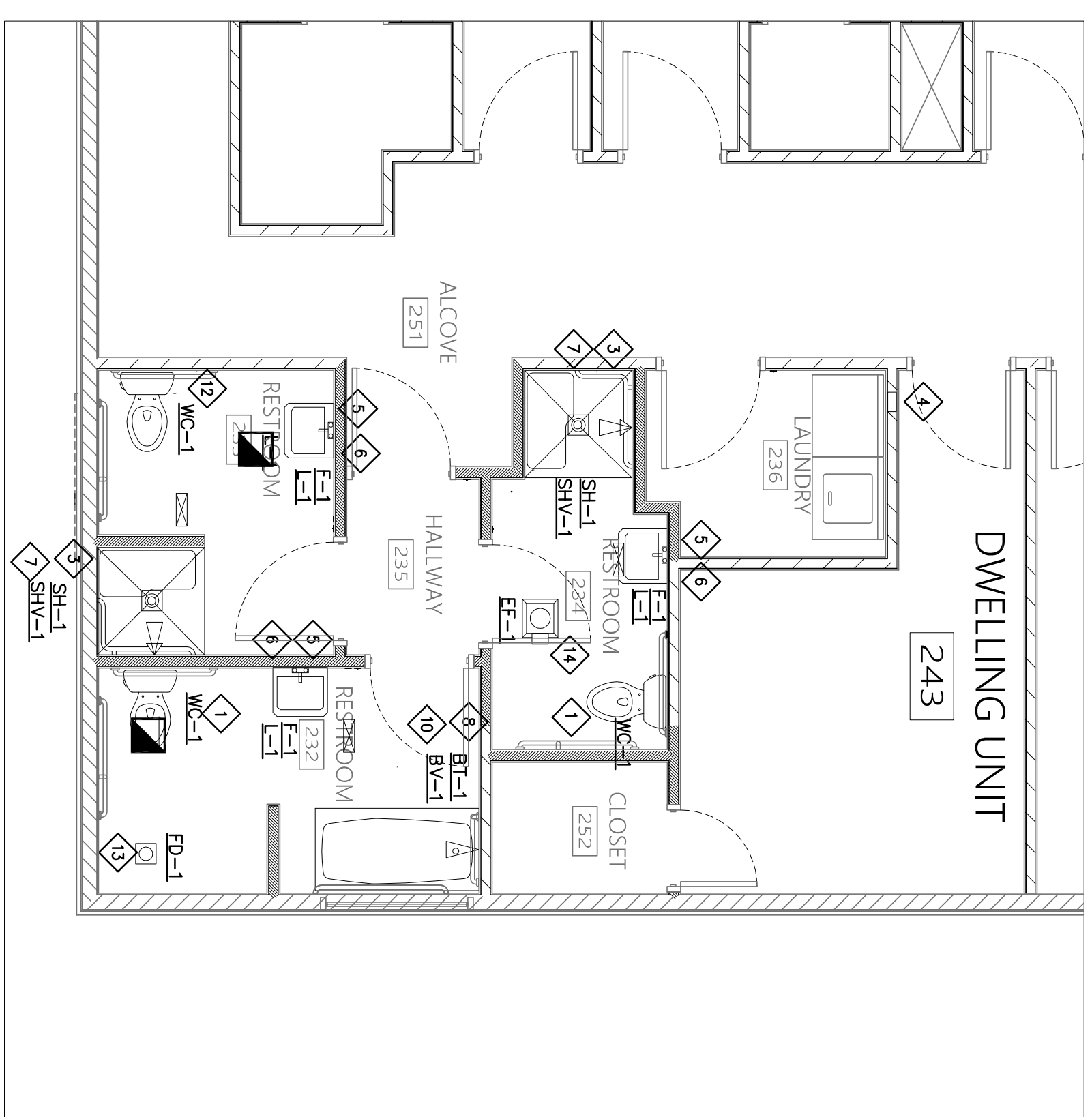
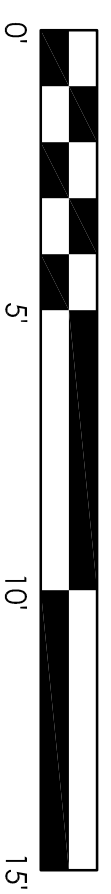
IEI INNOVATIVE ENGINEERS, INC.
2071 Heitz Rd, Suite B, Iowa City, IA 52240
T 319.353.4119 | F 319.351.0070
www.innovativeengineersinc.com



1 PLUMBING & VENTILATION PLAN - NORTH

1
P02

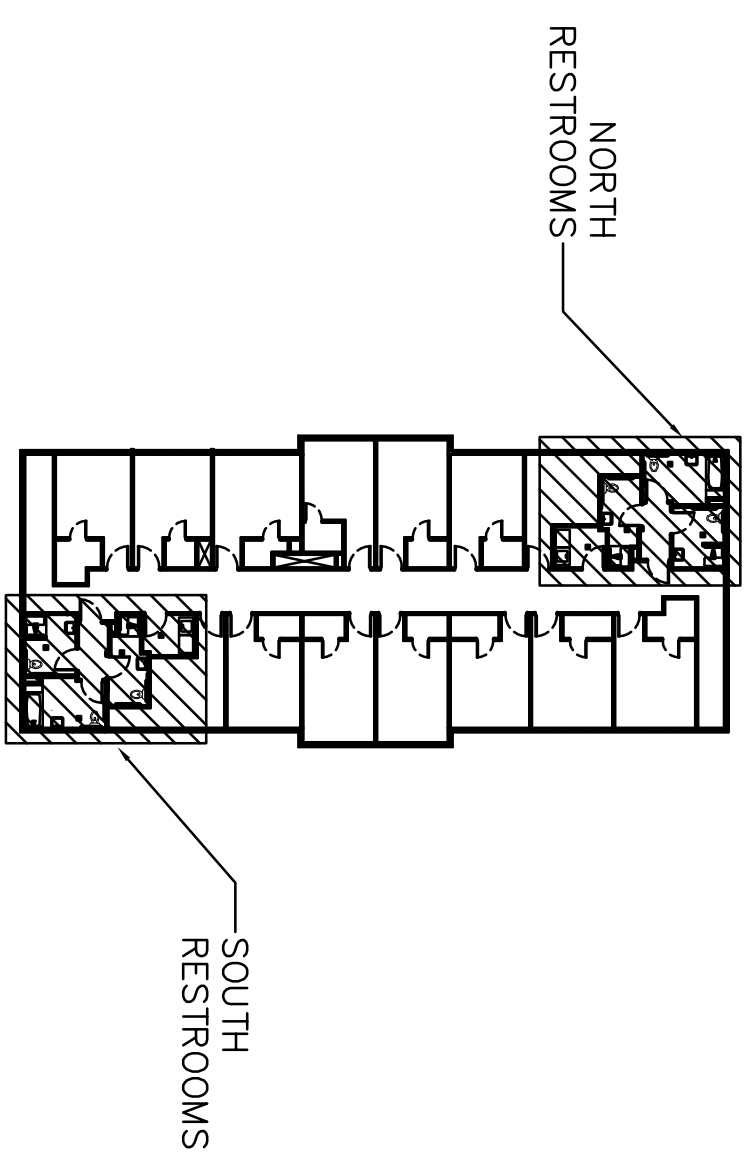
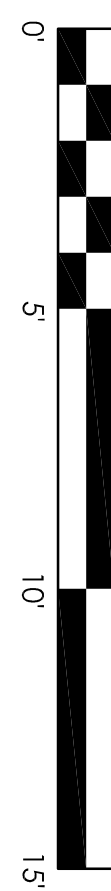
SCALE 1/4" = 1'-0"



2 PLUMBING & VENTILATION PLAN - SOUTH

2
P02

SCALE 1/4" = 1'-0"



KEY PLAN - SECOND FLOOR

SCALE: NTS

GENERAL NOTES:

1. CONTRACTOR IS ADVISED THAT ALL LOCATIONS ARE APPROXIMATE. CONTRACTOR SHALL FIELD VERIFY EXISTING CONDITIONS AND DIMENSIONS AT PROJECT SITE.
2. IT IS MANDATORY THAT EXISTING BUILDING RESTROOMS & NON-INTERFERED OPERATION DURING REPAIRS/RENOVATION OF EXISTING BUILDING SPECIFIC AREAS BEING RECONSTRUCTED/REPAIRED SHALL BE KEPT ON CONTINUOUS OPERATION INCLUDING DOMESTIC WATER, SANITARY, STORM, STEAM, HEATING, HOT WATER, HVAC SUPPLY, RETURN & EXHAUST, ETC. ANY ABSOLUTELY NECESSARY INTERUPTION OF THESE SERVICES TO COMPLY WITH PROJECT CONSTRUCTION SHALL BE ARRANGED WITH THE PROPERTY OWNER. THE CONTRACTOR SHALL BE RESPONSIBLE FOR NOTIFYING THE PROPERTY OWNER INSTALLED WHERE NECESSARY TO ACCOMPLISH THIS PURPOSE. TEMPORARIES SHALL BE REMOVED ONLY AFTER NEW PERMANENT SERVICES ARE INSTALLED AND FULLY OPERATIONAL.

PUMBING NOTES

1. ALL WORK SHALL BE IN ACCORDANCE WITH FEDERAL, STATE, AND CITY CODES, ORDINANCES, AND STANDARDS.
2. CONTRACTOR SHALL PROVIDE ALL LABOR, MATERIAL, EQUIPMENT AND TOOLS FOR COMPLETE INSTALLATION OF ALL WORK SHOWN ON PLANS AND/OR DESCRIBED HEREIN, INCLUDING ALL DEVICES, CONTROLS AND APPURTENANCES REQUIRED TO SET NEW SYSTEMS INTO OPERATION.
3. CONTRACTOR SHALL PROVIDE ALL LABOR, MATERIAL, EQUIPMENT AND TOOLS FOR COMPLETE INSTALLATION OF ALL WORK SHOWN ON PLANS AND/OR DESCRIBED HEREIN, INCLUDING ALL DEVICES, CONTROLS AND APPURTENANCES REQUIRED TO SET NEW SYSTEMS INTO OPERATION.
4. AN ATTENDANT HAS BEEN MADE TO SHOW ALL LIMITS OF REQUIRED WORK. CONTRACTOR SHALL VISIT THE SITE TO VERIFY CONDITIONS, LOCATIONS AND SIZES SHOWN OR NOT SHOWN.
5. CONTRACTOR SHALL VERIFY ALL MOUNTING, ALL ARRANGEMENTS, HEIGHTS AND LOCATIONS PRIOR TO BEGINNING ANY MENTION OF SPECIFIC MOUNTING ARRANGEMENT, HEIGHT OR LOCATION SHALL NOT RELIEVE CONTRACTOR OF RESPONSIBILITY TO VERIFY SPECIFIC REQUIREMENT FINISHED OR OTHER TRADES WORKING IN THE SAME AREA. NO OTHER WORK SHALL BE PERMITTED FOR TRADES INSTALLED IN WORKING LOCATIONS, IN CONTACT WITH OTHER WORK, ETC.
6. THESE DRAWINGS ARE NECESSARILY DIAGRAMMATIC IN NATURE. NOT ALL FITTINGS, OFFSETS, VENTS, OR DRAINS ARE SHOWN. CONTRACTOR SHALL INCLUDE ALL FITTINGS, OFFSETS, VENTS, AND DRAINS AS REQUIRED TO PROVIDE A COMPLETE AND FUNCTIONING SYSTEM.
7. PIPING SHALL NOT BE ROUTED OVER ELECTRICAL PANELS, ELECTRICAL EQUIPMENT, OR IN CODE REQUIRED CLEARANCE SPACES.
8. SANITARY AND REMOVE FLOOR AS REQUIRED FOR INSTALLATION OF NEW PIPING.
9. CONTRACTOR SHALL VERIFY ALL MOUNTING, ALL ARRANGEMENTS, HEIGHTS AND LOCATIONS PRIOR TO BEGINNING ANY MENTION OF SPECIFIC MOUNTING ARRANGEMENT, HEIGHT OR LOCATION SHALL NOT RELIEVE CONTRACTOR OF RESPONSIBILITY TO VERIFY SPECIFIC REQUIREMENT FINISHED OR OTHER TRADES WORKING IN THE SAME AREA. NO OTHER WORK SHALL BE PERMITTED FOR TRADES INSTALLED IN WORKING LOCATIONS, IN CONTACT WITH OTHER WORK, ETC.
10. LOCATE PLUMBING VENTS THROUGH ROOF MINIMUM OF 10'-0" AWAY FROM ALL OUTDOOR AIR INTAKES OR OPERABLE WINDOWS.
11. SHOULD CONDITIONS NECESSARY REARRANGEMENTS, OR PIPING CAN BE RUN TOGETHER ADVANTAGES SHOULD BE TAKEN. CONTRACTOR SHALL VERIFY ALL MOUNTING, ALL ARRANGEMENTS, HEIGHTS AND LOCATIONS PRIOR TO BEGINNING ANY MENTION OF SPECIFIC MOUNTING ARRANGEMENT, HEIGHT OR LOCATION SHALL NOT RELIEVE CONTRACTOR OF RESPONSIBILITY TO VERIFY SPECIFIC REQUIREMENT FINISHED OR OTHER TRADES WORKING IN THE SAME AREA. NO OTHER WORK SHALL BE PERMITTED FOR TRADES INSTALLED IN WORKING LOCATIONS, IN CONTACT WITH OTHER WORK, ETC.
12. CONTRACTOR'S RESPONSIBLE FOR SCHEDULING DELIVERY, RECEIVING, UNLOADING, UNPACKING, STORAGE, AND PROTECTION OF ALL MATERIALS AND EQUIPMENT. CONTRACTOR SHALL VERIFY ALL MOUNTING, ALL ARRANGEMENTS, HEIGHTS AND LOCATIONS PRIOR TO BEGINNING ANY MENTION OF SPECIFIC MOUNTING ARRANGEMENT, HEIGHT OR LOCATION SHALL NOT RELIEVE CONTRACTOR OF RESPONSIBILITY TO VERIFY SPECIFIC REQUIREMENT FINISHED OR OTHER TRADES WORKING IN THE SAME AREA. NO OTHER WORK SHALL BE PERMITTED FOR TRADES INSTALLED IN WORKING LOCATIONS, IN CONTACT WITH OTHER WORK, ETC.
13. CONTRACTOR'S RESPONSIBLE FOR SCHEDULING DELIVERY, RECEIVING, UNLOADING, UNPACKING, STORAGE, AND PROTECTION OF ALL MATERIALS AND EQUIPMENT. CONTRACTOR SHALL VERIFY ALL MOUNTING, ALL ARRANGEMENTS, HEIGHTS AND LOCATIONS PRIOR TO BEGINNING ANY MENTION OF SPECIFIC MOUNTING ARRANGEMENT, HEIGHT OR LOCATION SHALL NOT RELIEVE CONTRACTOR OF RESPONSIBILITY TO VERIFY SPECIFIC REQUIREMENT FINISHED OR OTHER TRADES WORKING IN THE SAME AREA. NO OTHER WORK SHALL BE PERMITTED FOR TRADES INSTALLED IN WORKING LOCATIONS, IN CONTACT WITH OTHER WORK, ETC.
14. DO ALL CUTTING AND PATCHING OF BUILDING MATERIALS AS REQUIRED FOR INSTALLATION OF COMPLETE AND WORKABLE SYSTEM. PATCHING SHALL MATCH EXISTING FINISHES AND CONSTRUCTION TO GREATEST POSSIBLE EXTENT.
15. IN AREAS WITH UNFINISHED CEILINGS, PIPING SHALL BE RUN ALONG THE UNDERSIDE OF SUPPORT JOIST OR STRUCTURAL MEMBERS. PIPING SHOULD BE GENERALLY HIDDEN AS MUCH AS POSSIBLE. THEREFORE, IT SHOULD BE LOCATED ABOVE STRUCTURAL MEMBERS OR ALONG TOP SIDE OF STRUCTURAL FLANGES.
16. ENGINEER RESERVES RIGHT TO CHANGE LOCATION OF ALL EQUIPMENT AND PROVIDE FIVE FEET IN ANY DIRECTION WITHOUT THESE CHANGES BEING MADE SUBJECT OF AN EXTRA CHARGE PROVIDED SUCH CHANGES ARE MADE BEFORE FINAL INSTALLATION.
17. ALL MATERIALS SHALL BE NEW AND FREE OF NOTICEABLE DEFECT.
18. ISOLATE COPPER PIPE FROM HANICER OR SUPPORTS WITH INSULATOR PAD.
19. ALL REPAIRED FLOOR AND WALL RESTROOMS SHALL BE PROPERLY PROTECTED FROM THE SMOKE AND WATER PENETRATING BY REMOVAL OF ANY FINISHING MATERIALS, DEBRIS, ETC. AND FOR EQUIPMENT INSTALLED BY CONTRACTOR INCLUDING EQUIPMENT FINISHED BY OWNER OR EQUIPMENT FURNISHED BY OTHERS.
20. PROVIDE MEANS OF RESEALING ALL FLOOR DRAINS.
21. SHUTOFF VALVES SHALL BE INSTALLED ON WATER SUPPLY PIPE TO EACH APPLIANCE OR MECHANICAL EQUIPMENT.
22. PROVIDE ACCESS PANELS TO ALLOW ACCESS AND MAINTENANCE WHEREVER VALVES NEED TO BE INSTALLED ABOVE HANG CEILINGS.

PUMBING KETED NOTES

1. INSTALL NEW ADA ACCESSIBLE FLOOR-MOUNTED WATER CLOSET AND ASSOCIATED PIPING.
2. EXISTING FLOOR DRAIN TO REMAIN.
3. INSTALL NEW ADA ACCESSIBLE SHOWER INSERT AND CONNECT NEW PIPING TO DRAIN.
4. EXISTING LAUNDRY BOX AND ASSOCIATED PIPING TO REMAIN.
5. INSTALL NEW ADA LAVATORY AND ASSOCIATED PIPING WITH RELOCATED PRE-WRAP ON EXPOSED PIPES.
6. INSTALL NEW ADA ACCESSIBLE LAVATORY FAUCET AND ASSOCIATED PIPING.
7. INSTALL NEW ADA ACCESSIBLE SHOWER VALVE AND ASSOCIATED PIPING.
8. INSTALL NEW ADA ACCESSIBLE BATH TUB.
9. NOT USED.
10. INSTALL NEW ADA ACCESSIBLE COMBINATION TUB, SHOWER VALVE AND ASSOCIATED PIPING.
11. REPLACE EXISTING FAN WITH NEW FAN. REUSE EXISTING EXHAUST DUCT. COORDINATE WITH E.C.
12. REPLACE EXISTING WATER CLOSET WITH NEW ADA FEATURE. REUSE EXISTING LOCATION.
13. REUSE EXISTING SHOWER DRAIN AND PIPING FOR NEW FLOOR DRAIN.
14. PROVIDE NEW EXHAUST FAN AND EXHAUST DUCT. COORDINATE LOCATION WITH ELECTRICAL CONTRACTOR.

Project:

DVIP
Restroom
Remodel
IOWA CITY, IOWA

Project number: 15.42

Note: © COPYRIGHT 2015
UNAUTHORIZED COPYING, DISCLOSURE OR
CONSTRUCTION WITHOUT WRITTEN
PERMISSION BY THOMAS MCINERNEY,
ARCHITECT, IS STRICTLY PROHIBITED.
Issue date: Description
JAN. 26, 2016 BID DOCUMENTS

Sheet Title:

PLUMBING
PLANS

Sheet Number:

P-2

Architect:

Thomas McInerney
ARCHITECT

319.331.0365

1208 Nancy Street Iowa City, Iowa 52240
www.thomasarchitect.com
thomas@thomasarchitect.com

Consultants:

IEI INNOVATIVE ENGINEERS, INC.
2871 Heinz Rd, Suite B, Iowa City, IA 52240
T 319.855.4115 | F 319.351.0070
www.innovativeengineersinc.com

Project :
DVIP
Restroom
Remodel
IOWA CITY, IOWA

Project number: 15.42

Note: © COPYRIGHT 2015
UNAUTHORIZED COPYING, DISCLOSURE OR
CONSTRUCTION WITHOUT WRITTEN
PERMISSION BY THOMAS MCINERNEY
ARCHITECT, IS STRICTLY PROHIBITED.

Issue date: Description
JAN. 26, 2016 BID DOCUMENTS

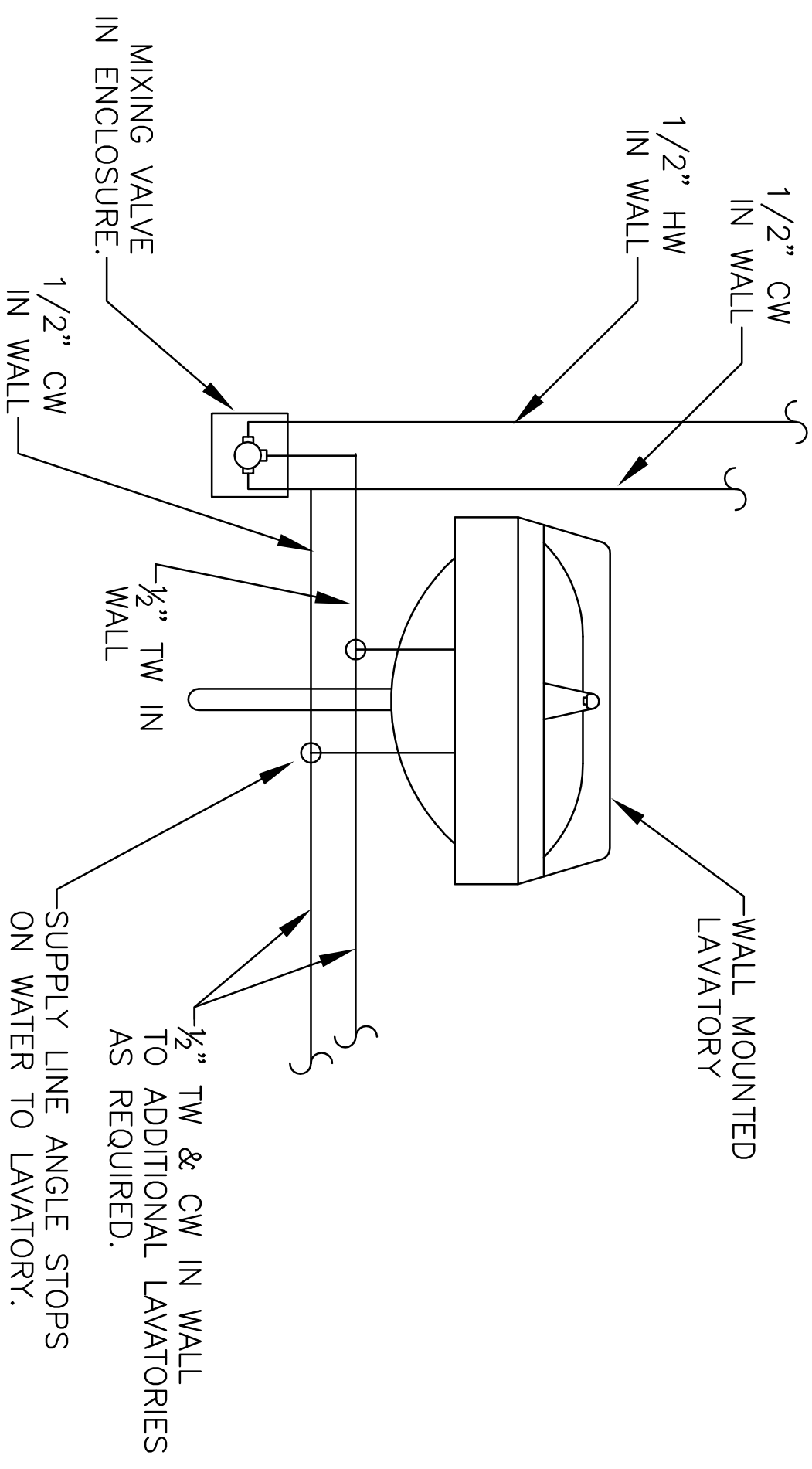
Sheet Title:

PLUMBING
SCHEDULES
AND DETAILS

Sheet Number:

P-3

MARK	DESCRIPTION	WATER	TYPE	VENT	CW	HW	DATE OF DESIGN	MANUFACTURER & MODEL	SPEC SECTION	NOTING	COMMENTS
WC1	FLOOR/STANDOFF WATER CLOSET ADA	✓	WET/DRY	✓	1-1/2"	-	-	PARAGRAM K-2979	PARAGRAM 210	17-247 TO B4	REFER TO ISD PLAN/SECTION B41
SH1	SPONGE/SINK	✓	✓	1-1/2"	-	-	AGUARIUS	PARAGRAM 212	18-AF TO B41		
SW1	SW-1 VALVE	-	-	-	3/4"	3/4"	MOEN S42	PARAGRAM 213	38-AF 1/2" TO COMMENTS		
E-1	WALL MOUNTED LAVATORY ADA	1-1/2"	1-1/2"	1-1/2"	-	-	KOHLER K-2007	PARAGRAM 215	22-41.00 TO B41	27-34-AF TO B41	PROVIDE VALVE SET WITH WAXING VALVE
F-1	LAVATORY FAUCET	N/A	N/A	N/A	1/2"	1/2"	MOEN B417	PARAGRAM 216	22-41.00 TO B41		
F-1	FLOOR DRAIN	✓	✓	1-1/2"	-	-	ZURN L-415	PARAGRAM 217	22-41.00 TO B41		PROVIDE KOHLER K-7140 TRIP DRAIN
B-1	BATH TUB	✓	✓	1-1/2"	-	-	KOHLER K-505	PARAGRAM 217	22-41.00 TO B41		
B-1	BATH TUB SHOWER/VALVE	-	-	-	3/4"	3/4"	MOEN S84	PARAGRAM 217	22-41.00 TO B41		



① LAVATORY MIXING ASSEMBLY DETAIL

MARK	DESCRIPTION	PPE MATERIAL	PPE SPEC SECTION	PPE INSULATION MATERIAL	PPE INSULATION SPEC SECTION	TYPE INSULATION	COMMENTS
CW	COLD WATER	COPPER	PARAGRAM 210	THERMATEX/STONORIC	PARAGRAM 210	22-19 TO B41	
HW	HOT WATER	COPPER	PARAGRAM 212	THERMATEX/STONORIC CELLULAM INSULATION	PARAGRAM 212	22-19 TO B41	
V	VENT	MANCH-SYSTEM PPE	PARAGRAM 210	-	-	-	
SAV	SAVING SEWER (DRAIN)	COLD IRON, COPPER, STEEL	PARAGRAM 211	-	-	-	

MARK	DESCRIPTION	CM	STAG (INCHES WATER)	VOLTAGE	ELECTRICAL AMPS	WATS	SONES	COMMENTS
E-1	CERAMIC EXHAUST FAN	80	0.25"	120V	0.1 A	18W	<0.3 AT 80 CFM	NOTES 1, 2, 3

NOTE: 1. TYPICAL FAN, REED VENT, EXACT LOCATION.
2. ROUTE & BRANCH DUCT TO NEAREST EXTERIOR AND TERMINATE WITH MANUFACTURER SUPPLIED EXHAUST TERMINAL.
3. COORDINATE INSULATION WITH E.C.