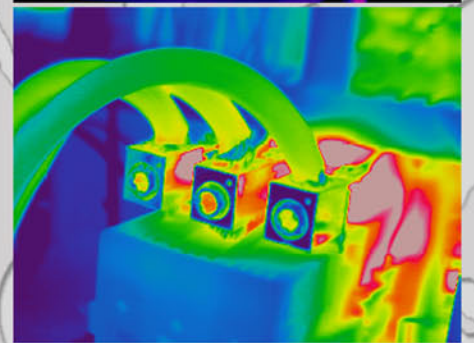
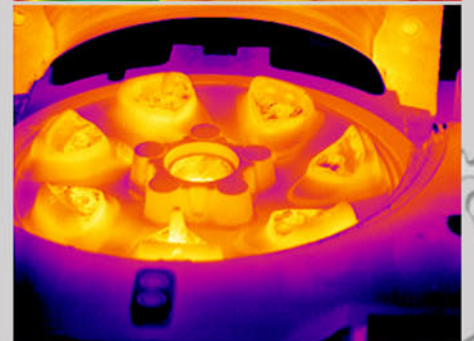
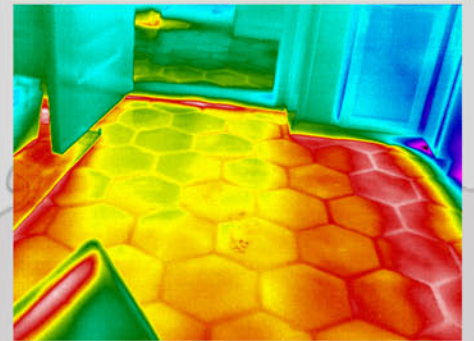
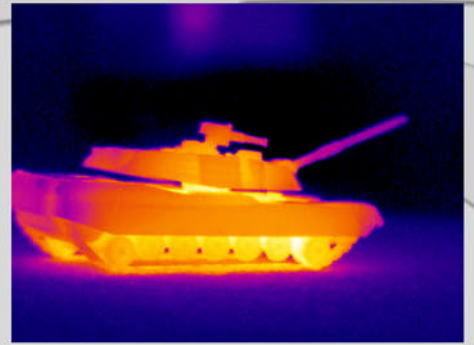


ICI IR 640



System Features

High resolution 640x480 detector

Four channels

5 inch detachable LCD with remote

Ergonomic design

Easy entry for high end HD camera



Specifications

Detector type	640×480 UFPA VOX
Array size/format	640x480
Field of view/min focus Distance	24°×18°/0.5m
Spatial resolutions (IFOV)	0.65mrad
Thermal sensitivity	< 0.05°C @ 30°C
Frame rate	50Hz / 60Hz
Focus	Motorized, Auto and Manual
Spectral range	8-14 microns
Control button	YES—Manual or Controller
Correction	Emissivity, ambient temp., distance, relative humidity
Measurement mode	9 Moveable spots, Auto hot/cold spot, 5 area boxes, Isotherm
WiFi	Yes
Delta T	Yes
Bluetooth	Yes
Illuminator	Yes
Laser pointer	Yes
Crosshair	On/off
External power	8~11V DC
Power consumption	<4.5W
Operating temperature	-20°C~+50°C
Storage temperature	-40°C~+70°C
Encapsulation	IP54
Weight	<58.20oz
Dimensions	12.88" X 5.63" X 6.70"
External DC input	Yes
Video output	PAL / NTSC
PTZ decoder interface (Optional)	YES
Alarm output (Optional)	On - Off Alarm output