

Sensory and Nervous System

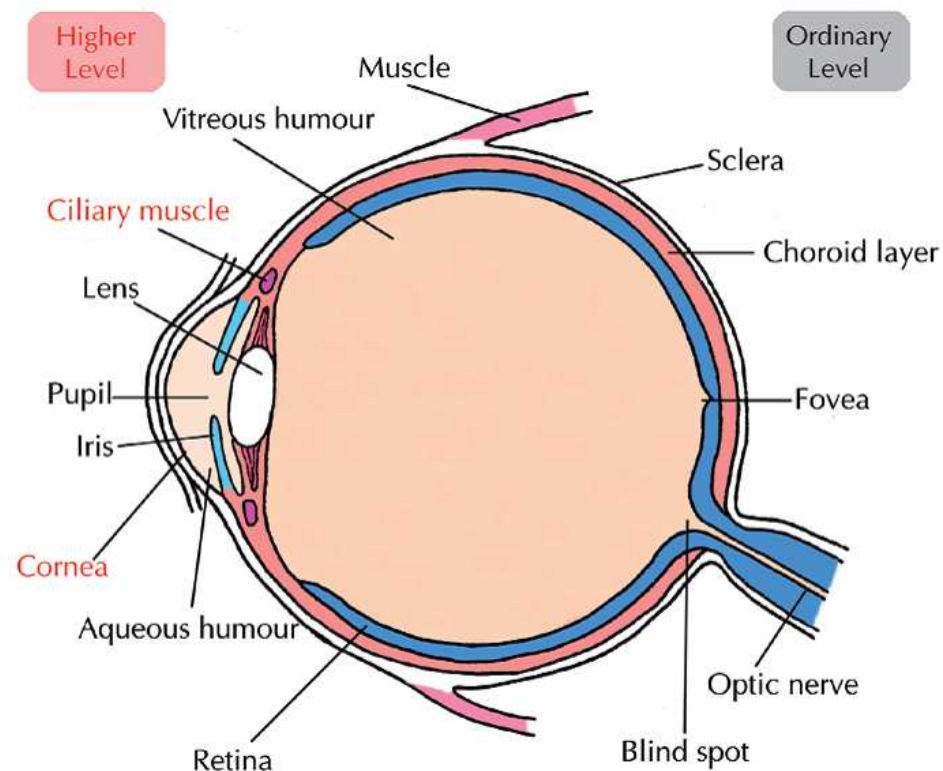
There are **5** main senses.
These are ...

	Sense	Organ
1.	Sight	Eyes
2.	Hearing	Ears
3.	Taste	Tongue
4.	Smell	Nose
5.	Touch	Skin

The Eye

Cells in the eye change light into electrical messages (impulses). The impulses are carried along a nerve (optical nerve) into the brain. The brain sorts out the messages and shows us a picture.

Structure of the Eye



Response to Light



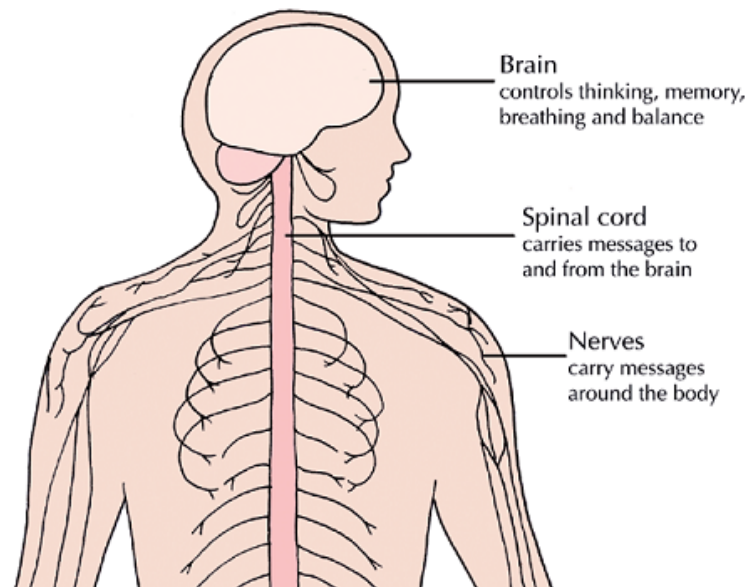
Parts you need to know...

Part of the Eye	Function
Iris	Controls the amount of light entering the eye
Lens	Focuses light onto the retina.
Optic Nerve	Carries nerve impulses from the eye to brain.
Pupil	Allows light to enter the eye.
Retina	Has the light receptor cells - detects light.
Ciliary Muscle	Changes the shape of the lens.
Cornea	Allows light into eye and bends the light.

Nervous System

CNS - Central Nervous System

This contains the Brain and the Spinal Cord
The spinal cord carries messages to and from the brain and body.



The Nerves

Nerves are made of bundles of neurons.
Electric impulses (messages) travel along these nerves.

There are 2 types of nerves,

1. **Sensory Nerves** - messages from nerves to the brain.
2. **Motor Nerves** - messages from brain to the muscles.

