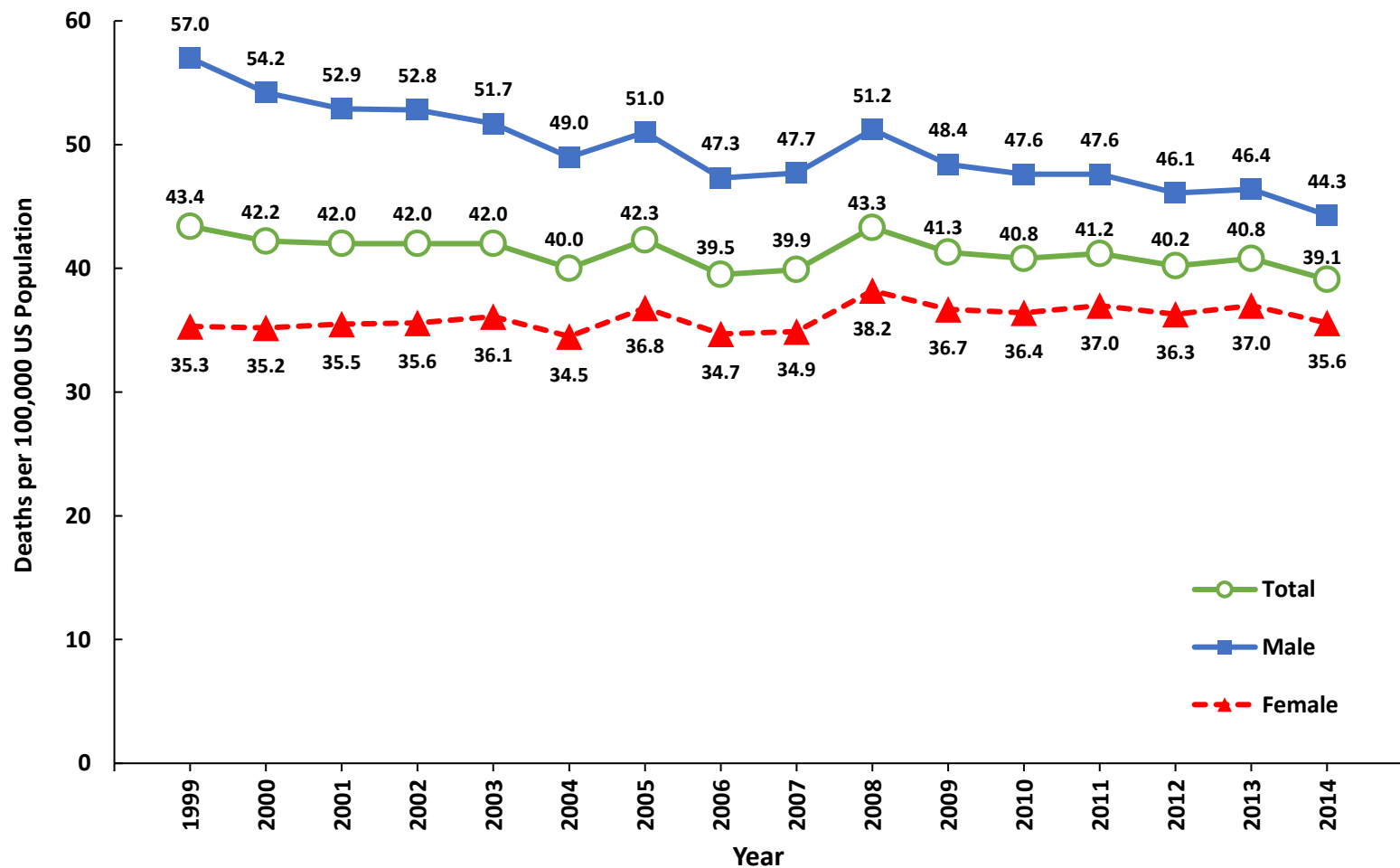


Age-Standardized Death Rates for Chronic Obstructive Pulmonary Disease (COPD)— United States, 1999-2014



COPD as the underlying cause of death was defined by ICD-10 codes J40-J44.
 Death rates are reported per 100,000 population and were age-standardized to the 2000 US projected population.
 Source: National Vital Statistics System detailed mortality data at <http://wonder.cdc.gov>.

**Age-Standardized Death Rates for
Chronic Obstructive Pulmonary Disease (COPD)—
United States, 1999-2014**

Year	Deaths per 100,000 US Population		
	Total	Male	Female
1999	43.4	57.0	35.3
2000	42.2	54.2	35.2
2001	42.0	52.9	35.5
2002	42.0	52.8	35.6
2003	42.0	51.7	36.1
2004	40.0	49.0	34.5
2005	42.3	51.0	36.8
2006	39.5	47.3	34.7
2007	39.9	47.7	34.9
2008	43.3	51.2	38.2
2009	41.3	48.4	36.7
2010	40.8	47.6	36.4
2011	41.2	47.6	37.0
2012	40.2	46.1	36.3
2013	40.8	46.4	37.0
2014	39.1	44.3	35.6

COPD as the underlying cause of death was defined by ICD-10 codes J40-J44.

Death rates are reported per 100,000 population and were age-standardized to the 2000 US projected population.

Source: National Vital Statistics System detailed mortality data at <http://wonder.cdc.gov>.