

Project:	
Date:	
Note:	

SIMPLY RELIABLE

LED FLOOD LIGHT T50 SERIES



DESCRIPTION

Our T50 Flood Light fixtures will deliver a broad light output to any area where security lighting is essential. Available from 3000k to 5000k, customers will save up to 80 percent in energy costs while adding superior brightness to any application.

FEATURES

- IP65 rated fixture suitable for wet locations
- Disburses a 110-degree beam optic spread

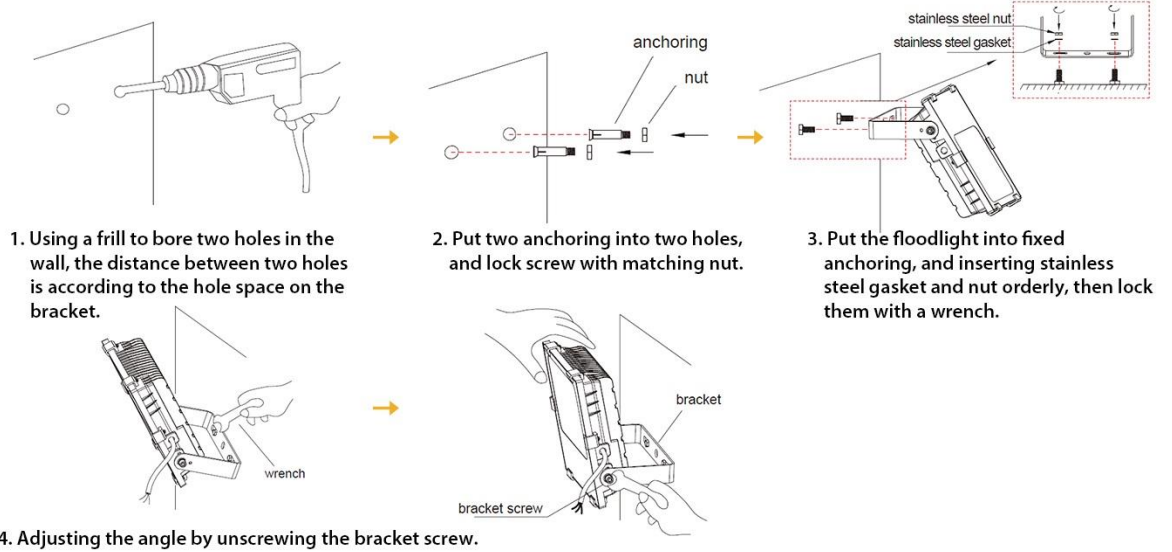
SPECIFICATIONS		57-50W-40K-FL-XT05	57-50W-50K-FL-XT05	57-50W-57K-FL-XT05
ORDERING	Brand	Builders Pack	Builders Pack	Builders Pack
	SKU	ES68020-2	ES68020-3	ES68020-4
GENERAL PERFORMANCE	Power Consumption	50W	50W	50W
	Color Temp. (CCT)	4000K	5000K	5700K
	Lumens Delivered (lm)	4514.9 lm	4692 lm	4725 lm
	Efficacy (lm/w)	99.10 lm/W	101.10 lm/W	101.57 lm/W
	CRI		≥80	
	L70 Lifetime (Hours)		50,000 Hours	
	Equivalency		100-175W MH	
ELECTRICAL	Power Factor		≥0.9	
	Input Voltage		AC 120-277V	
	Dimming		No	
PHYSICAL	Mounting		Bracket Installation	
	Operating Temp.		-22°F ~+ 122°F	
	Storage Temp.		-40°F ~+ 185°F	
	Ingress Protection (IP)		IP65	
QUALIFICATION	Certifications	UL: ETL# 5000444 DLC RoHS FCC CE		
	Material Usage	Die-cast Aluminum		
	Environment	Outdoor		
	Warranty	5 years		
DIMENSIONS	Product Size	9.25" x 7.87" x 2.60"		
	Gross Weight	3.79 lbs		

Project:	
Date:	
Note:	

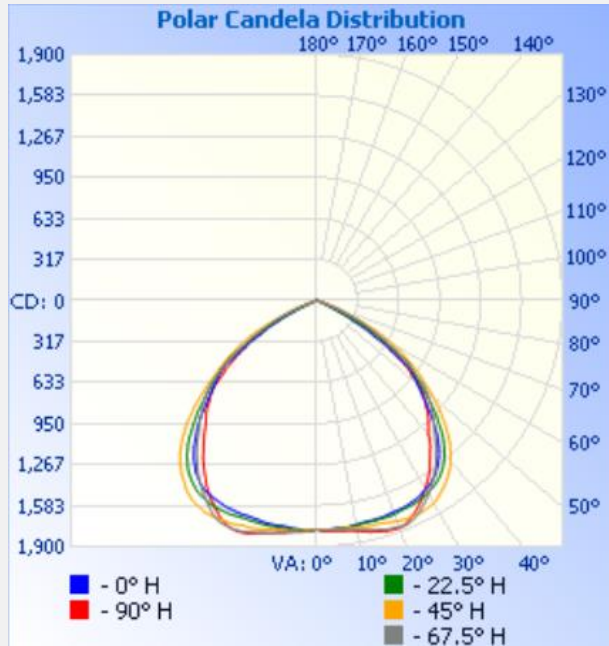
SIMPLY RELIABLE

**INSTALLATION
DIAGRAM**

BRACKET INSTALLATION



**DISTRIBUTION
CURVE**



Project:	
Date:	
Note:	

DISTANCE CURVE		
	Pcs / Carton	8pcs
	Master Carton Size	22.60" x 22" x 14.80"
	Pcs / Pallet	160pcs
	Pcs / 20' GP	1800pcs (No Pallet) 1664pcs (Palletized)
	Pcs / 40' GP	3600pcs (No Pallet) 3400pcs (Palletized)
	Pcs / 40' HQ	4528pcs (No Pallet) 4264pcs (Palletized)
Pcs / 45' HQ	4864pcs (No Pallet) 4728pcs (Palletized)	

*Package specifications are subject to change without notice.

LAMP CODE DEFINITIONS					
Internal Use	Wattage	CCT	Category	Other	Misc.
57	50W	40K = 4000K 50K = 5000K 57K = 5700K	FL = Flood Light	XT = Series	05