

COLLINS Avenue

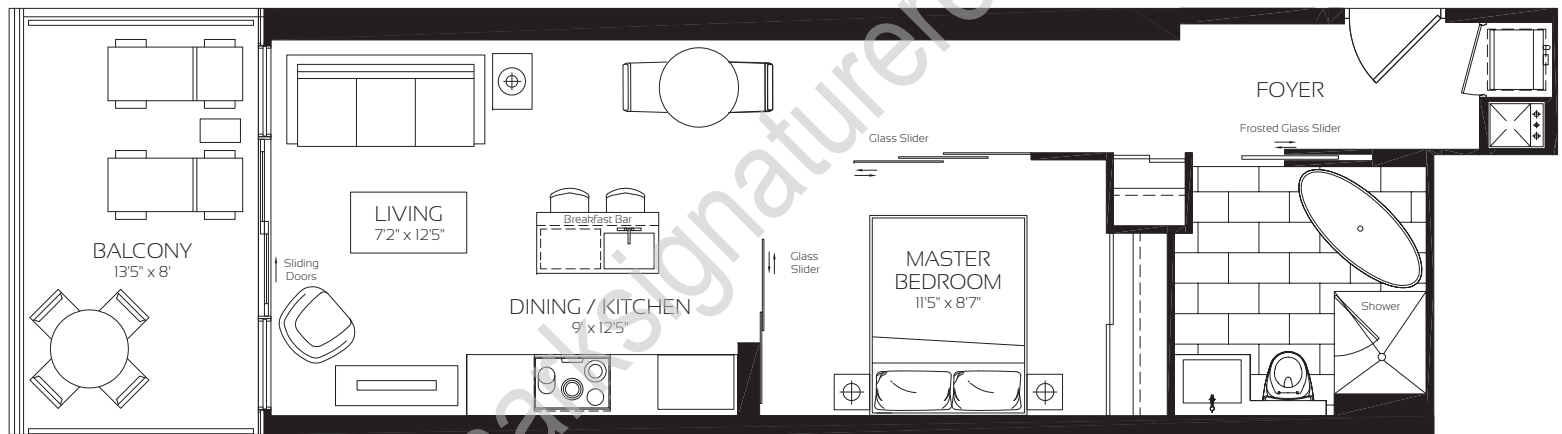
1 Bedroom

THE RESIDENCES OF
488 UNIVERSITY AVENUE

COLLINS

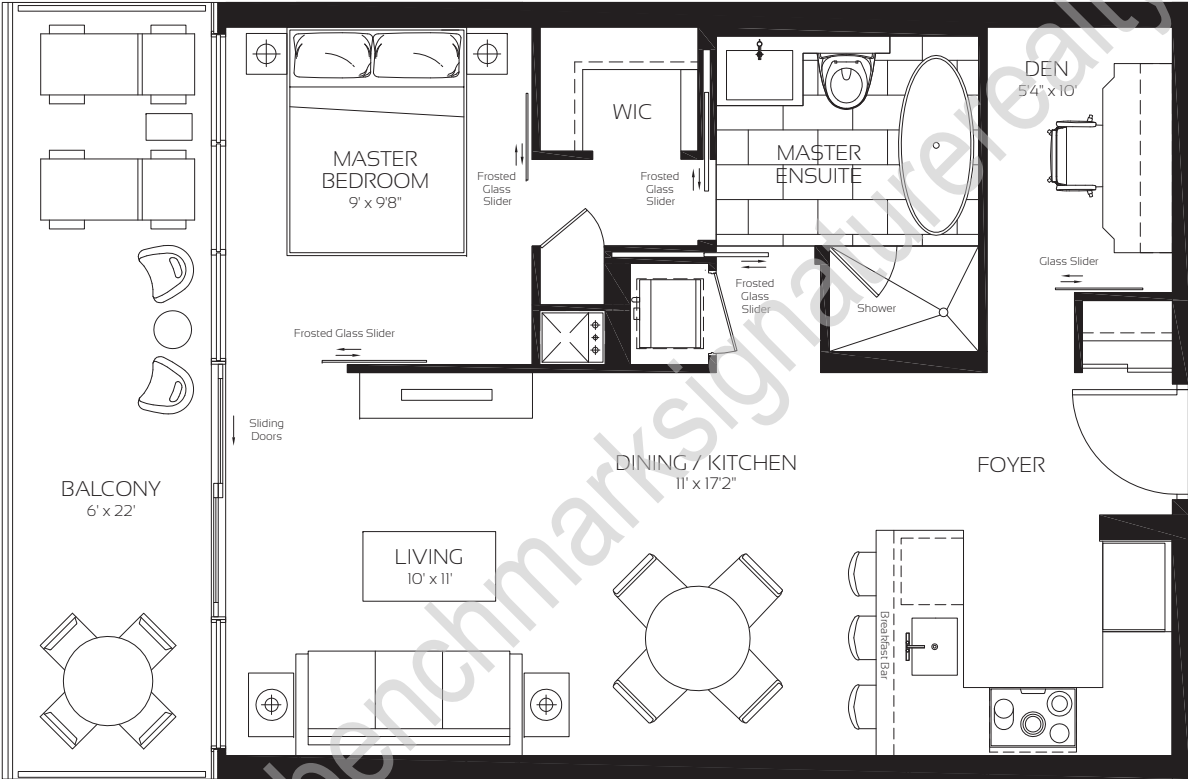
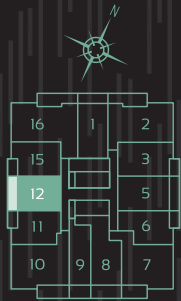
1 Bedroom

	sq ft
Interior Area	544
Balcony Area	108
TOTAL AREA	652



Sizes and specifications are subject to change without notice. E&O.E. Actual usable space may vary from any stated floor area. All dimensions are subject to normal construction variances. Measurements of rooms set forth on any floor plan are generally taken at the greatest points of each given room (as if the room were perfectly rectangular), without regard for any cutouts. Floor measurements were calculated on the middle floor of typical floor plates.

GEORGE V Avenue
1 Bedroom + Den



THE RESIDENCES OF
488 UNIVERSITY AVENUE

GEORGE V

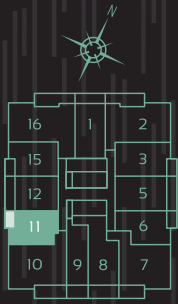
1 Bedroom + Den

	sq ft
Interior Area	617
Balcony Area	132
TOTAL AREA	749

Sizes and specifications are subject to change without notice. E&O.E. Actual usable space may vary from any stated floor area. All dimensions are subject to normal construction variances. Measurements of rooms set forth on any floor plan are generally taken at the greatest points of each given room (as if the room were perfectly rectangular), without regard for any cutouts. Floor measurements were calculated on the middle floor of typical floor plates.

CHAMPS-ÉLYSÉES Avenue

1 Bedroom + Den



THE RESIDENCES OF
488 UNIVERSITY AVENUE

CHAMPS-ÉLYSÉES

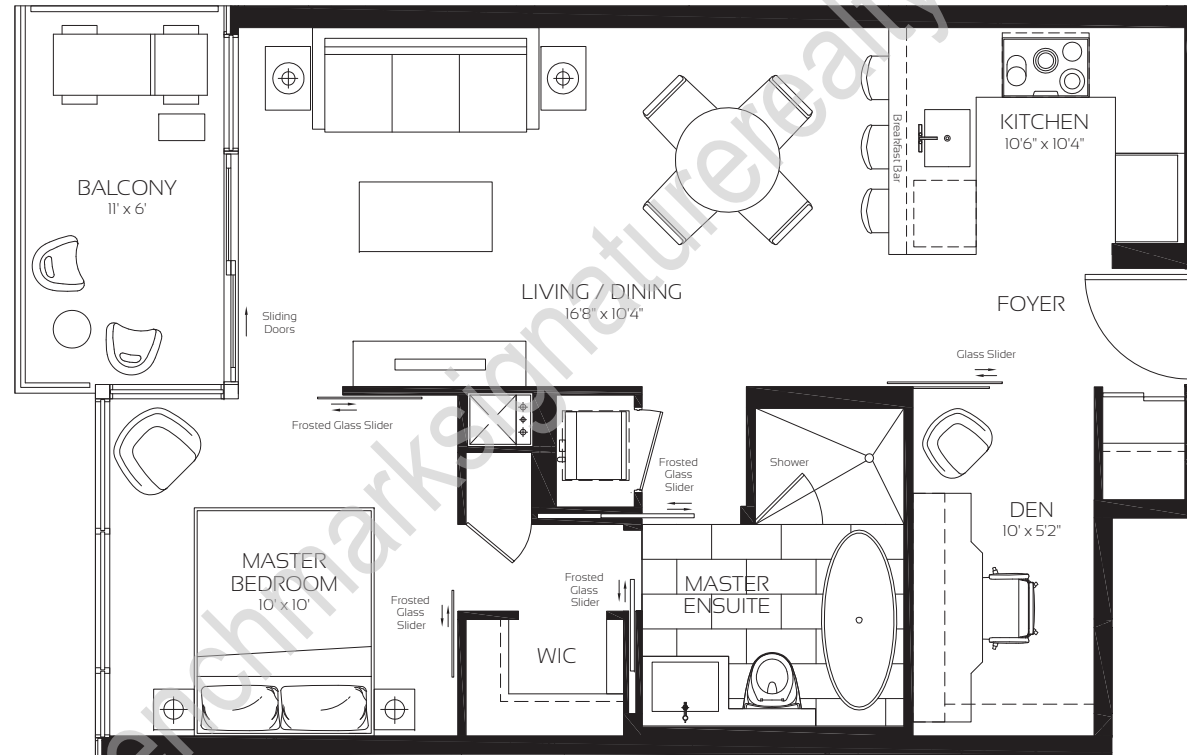
1 Bedroom + Den

sq ft

Interior Area 620

Balcony Area 66

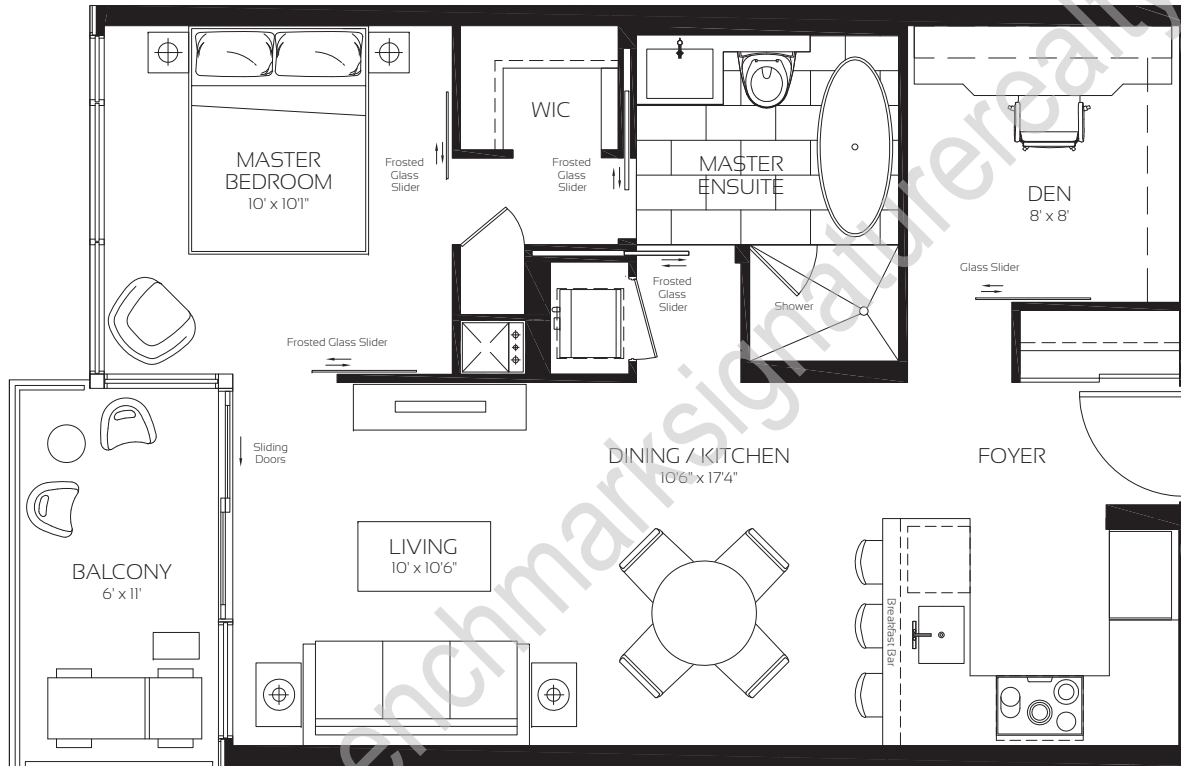
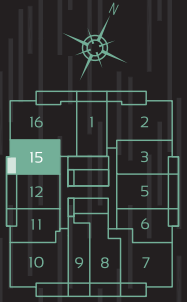
TOTAL AREA 686



Sizes and specifications are subject to change without notice. E&O.E. Actual usable space may vary from any stated floor area. All dimensions are subject to normal construction variances. Measurements of rooms set forth on any floor plan are generally taken at the greatest points of each given room (as if the room were perfectly rectangular), without regard for any cutouts. Floor measurements were calculated on the middle floor of typical floor plates.

MELROSE Avenue

1 Bedroom + Den



THE RESIDENCES OF
488 UNIVERSITY AVENUE

MELROSE

1 Bedroom + Den

sq ft

Interior Area 649

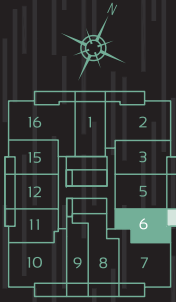
Balcony Area 66

TOTAL AREA 715

Sizes and specifications are subject to change without notice. E&O.E. Actual usable space may vary from any stated floor area. All dimensions are subject to normal construction variances. Measurements of rooms set forth on any floor plan are generally taken at the greatest points of each given room (as if the room were perfectly rectangular), without regard for any cutouts. Floor measurements were calculated on the middle floor of typical floor plates.

PRINCESS GRACE Avenue

1 Bedroom + Den



THE RESIDENCES OF
488 UNIVERSITY AVENUE

PRINCESS GRACE

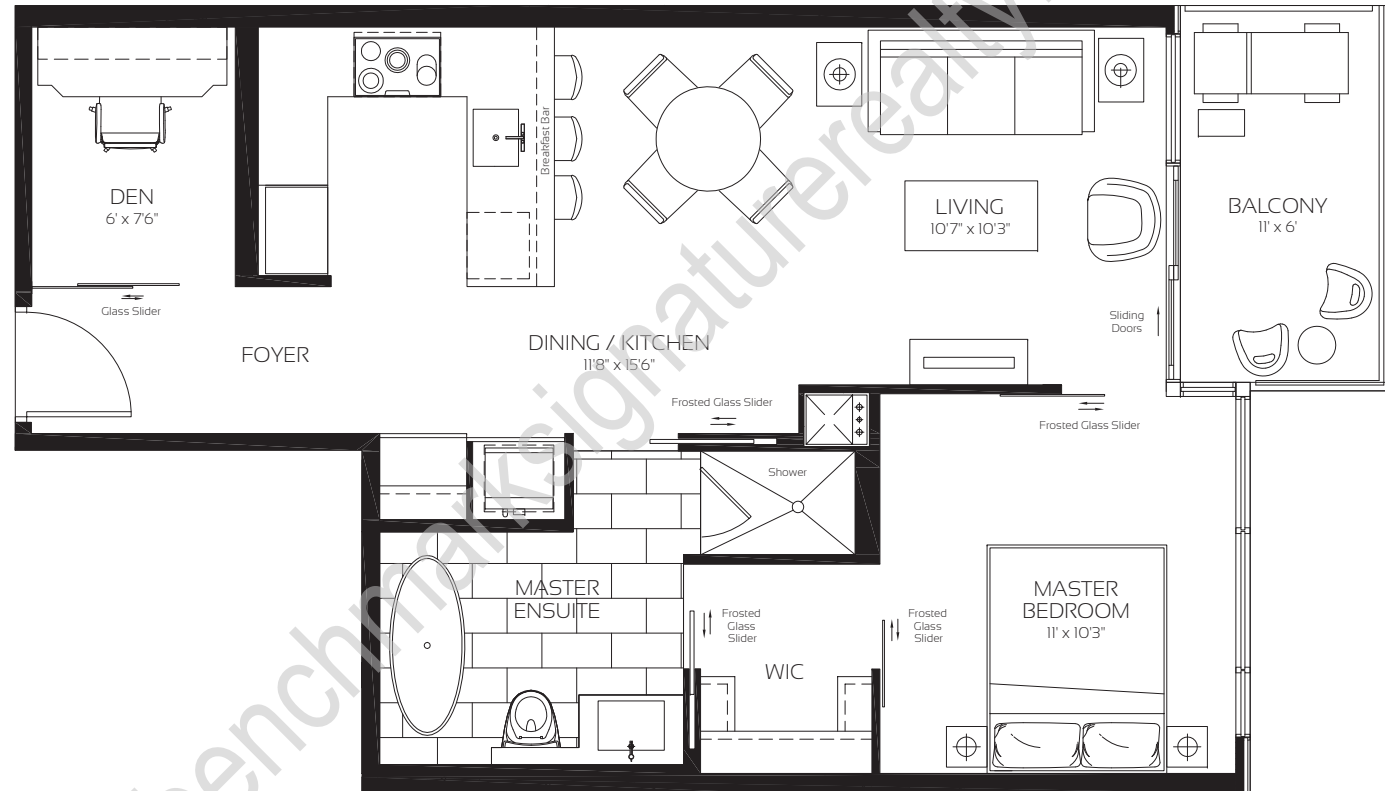
1 Bedroom + Den

sq ft

Interior Area 674

Balcony Area 66

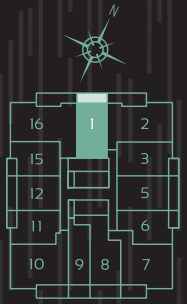
TOTAL AREA 740



Sizes and specifications are subject to change without notice. E&O.E. Actual usable space may vary from any stated floor area. All dimensions are subject to normal construction variances. Measurements of rooms set forth on any floor plan are generally taken at the greatest points of each given room (as if the room were perfectly rectangular), without regard for any cutouts. Floor measurements were calculated on the middle floor of typical floor plates.

DE JULIO Avenue

1 Bedroom + Den



488 UNIVERSITY AVENUE

THE RESIDENCES OF

DE JULIO

1 Bedroom + Den

sq ft

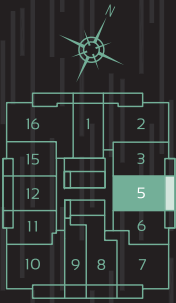
Interior Area 689

Balcony Area 115

TOTAL AREA 804



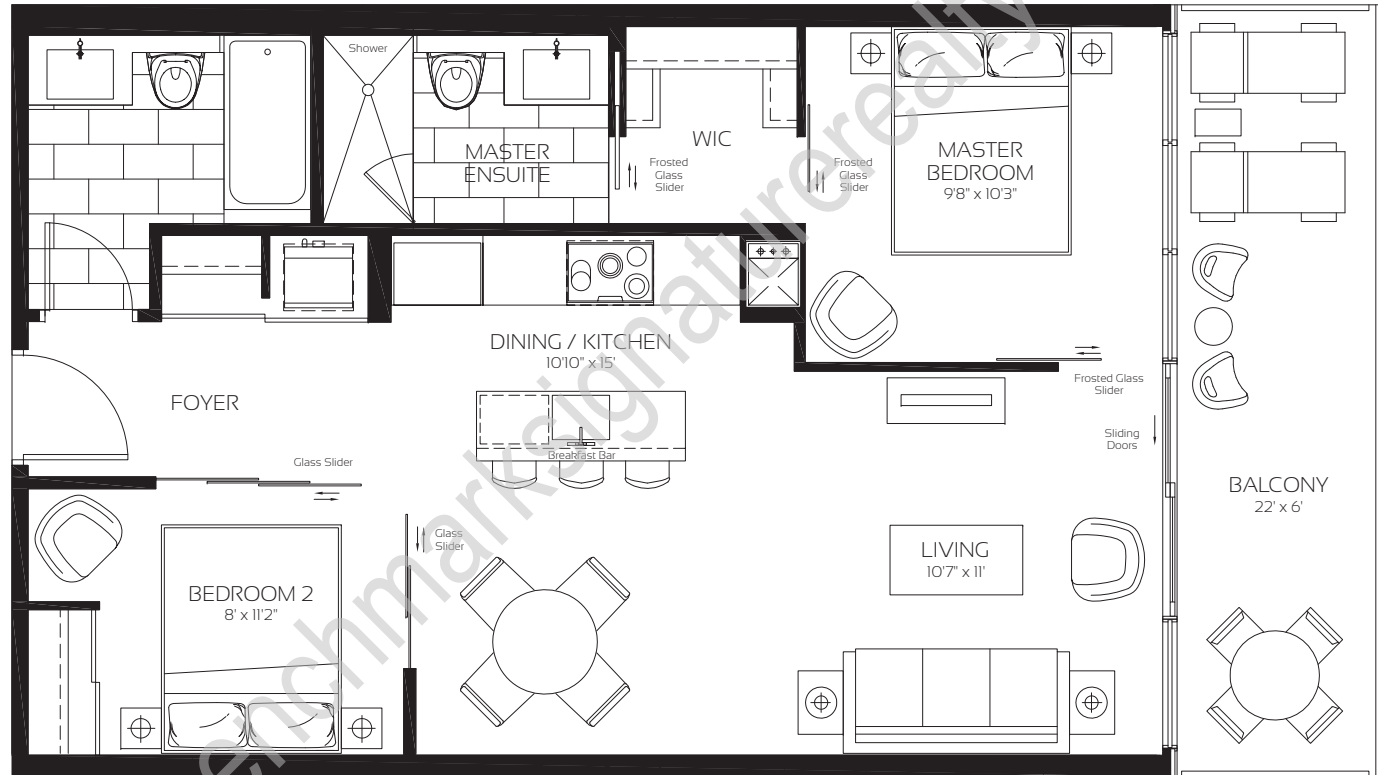
Sizes and specifications are subject to change without notice. E&O.E. Actual usable space may vary from any stated floor area. All dimensions are subject to normal construction variances. Measurements of rooms set forth on any floor plan are generally taken at the greatest points of each given room (as if the room were perfectly rectangular), without regard for any cutouts. Floor measurements were calculated on the middle floor of typical floor plates.



GRAND Avenue

2 Bedroom

THE RESIDENCES OF
488 UNIVERSITY AVENUE



GRAND

2 Bedroom

sq ft

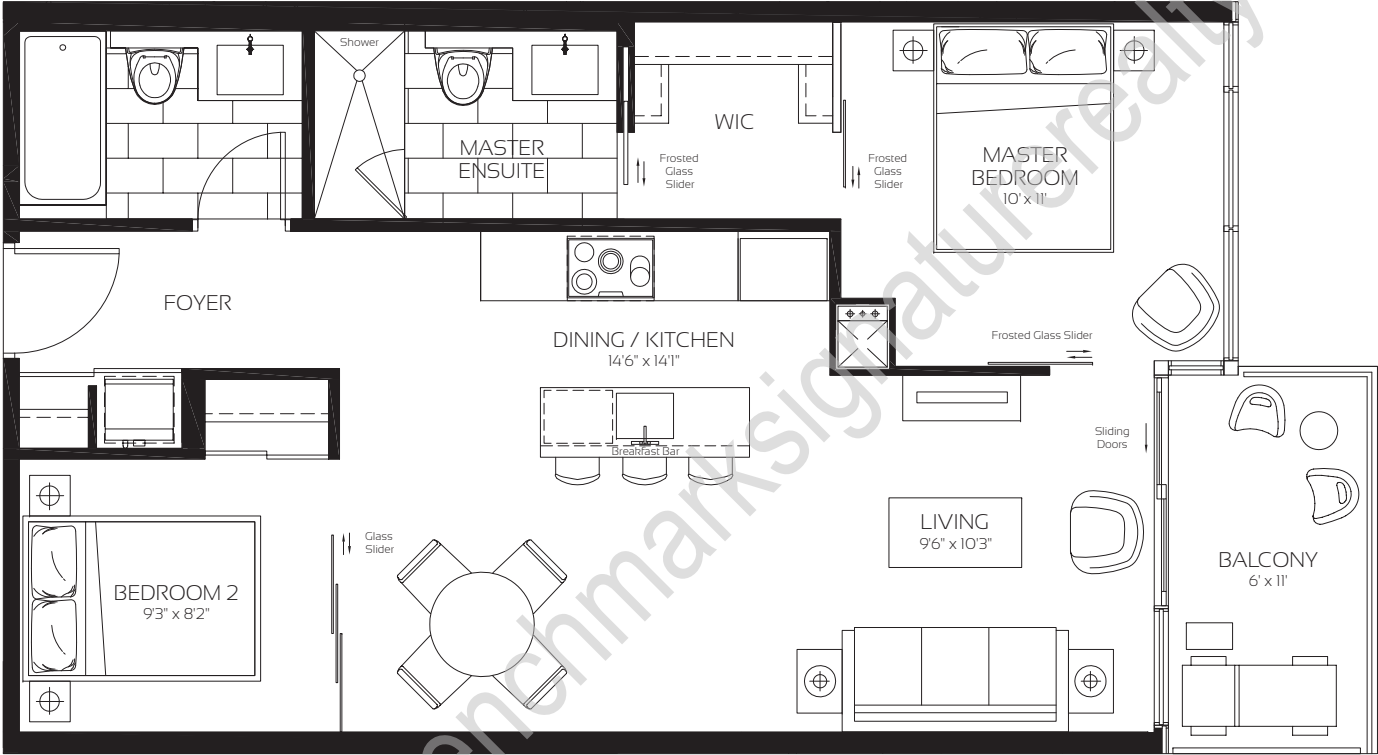
Interior Area 736

Balcony Area 132

TOTAL AREA 868

Sizes and specifications are subject to change without notice. E&OE. Actual usable space may vary from any stated floor area. All dimensions are subject to normal construction variances. Measurements of rooms set forth on any floor plan are generally taken at the greatest points of each given room (as if the room were perfectly rectangular), without regard for any cutouts. Floor measurements were calculated on the middle floor of typical floor plates.

BROADWAY Avenue
2 Bedroom



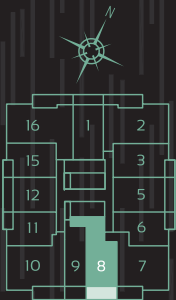
THE RESIDENCES OF
488 UNIVERSITY AVENUE

BROADWAY

2 Bedroom

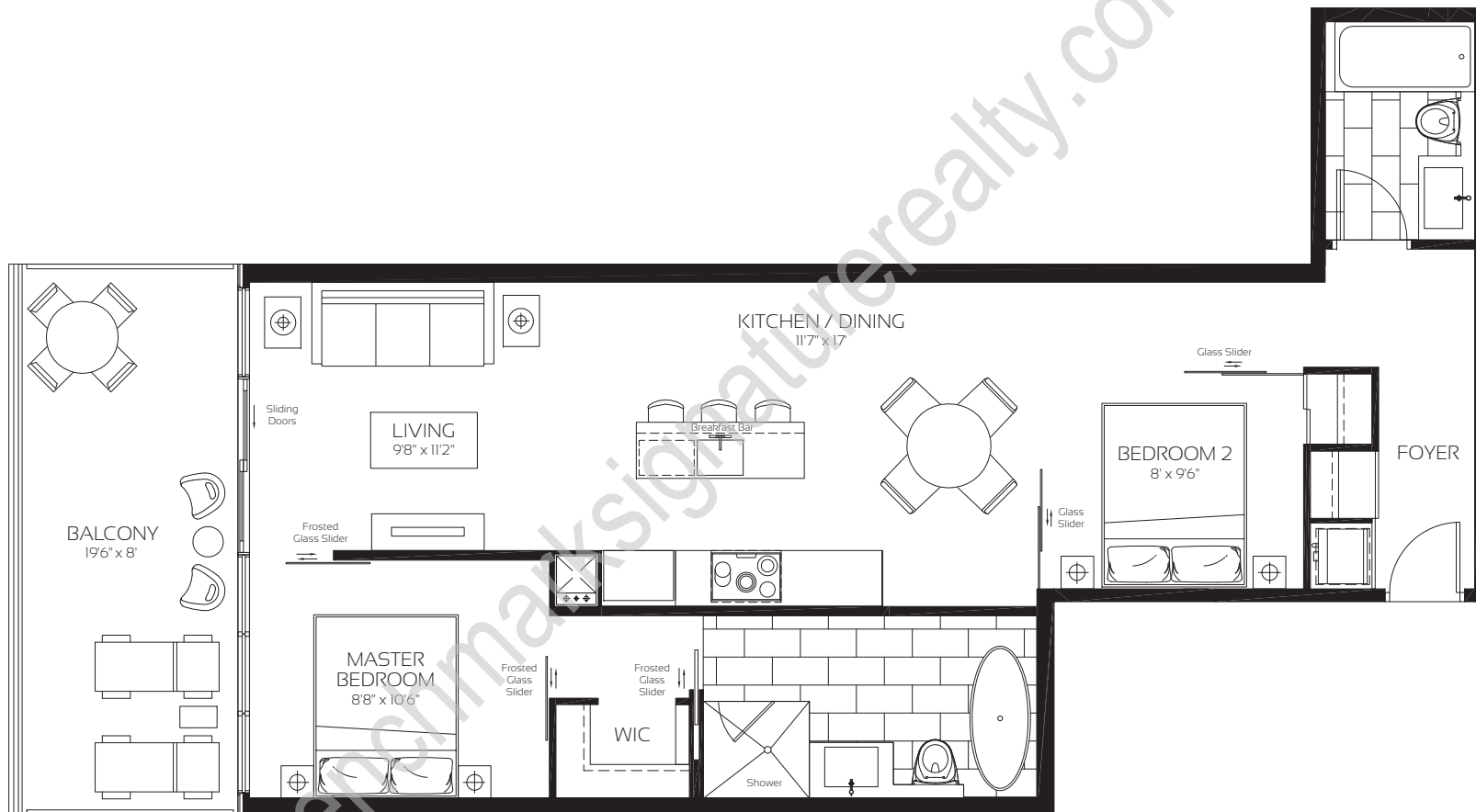
	sq ft
Interior Area	739
Balcony Area	66
TOTAL AREA	805

Sizes and specifications are subject to change without notice. E&O.E. Actual usable space may vary from any stated floor area. All dimensions are subject to normal construction variances. Measurements of rooms set forth on any floor plan are generally taken at the greatest points of each given room (as if the room were perfectly rectangular), without regard for any cutouts. Floor measurements were calculated on the middle floor of typical floor plates.



THE RESIDENCES OF
488 UNIVERSITY AVENUE

WORTH Avenue 2 Bedroom

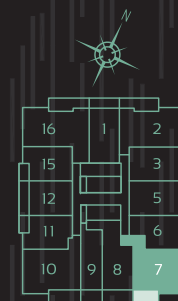
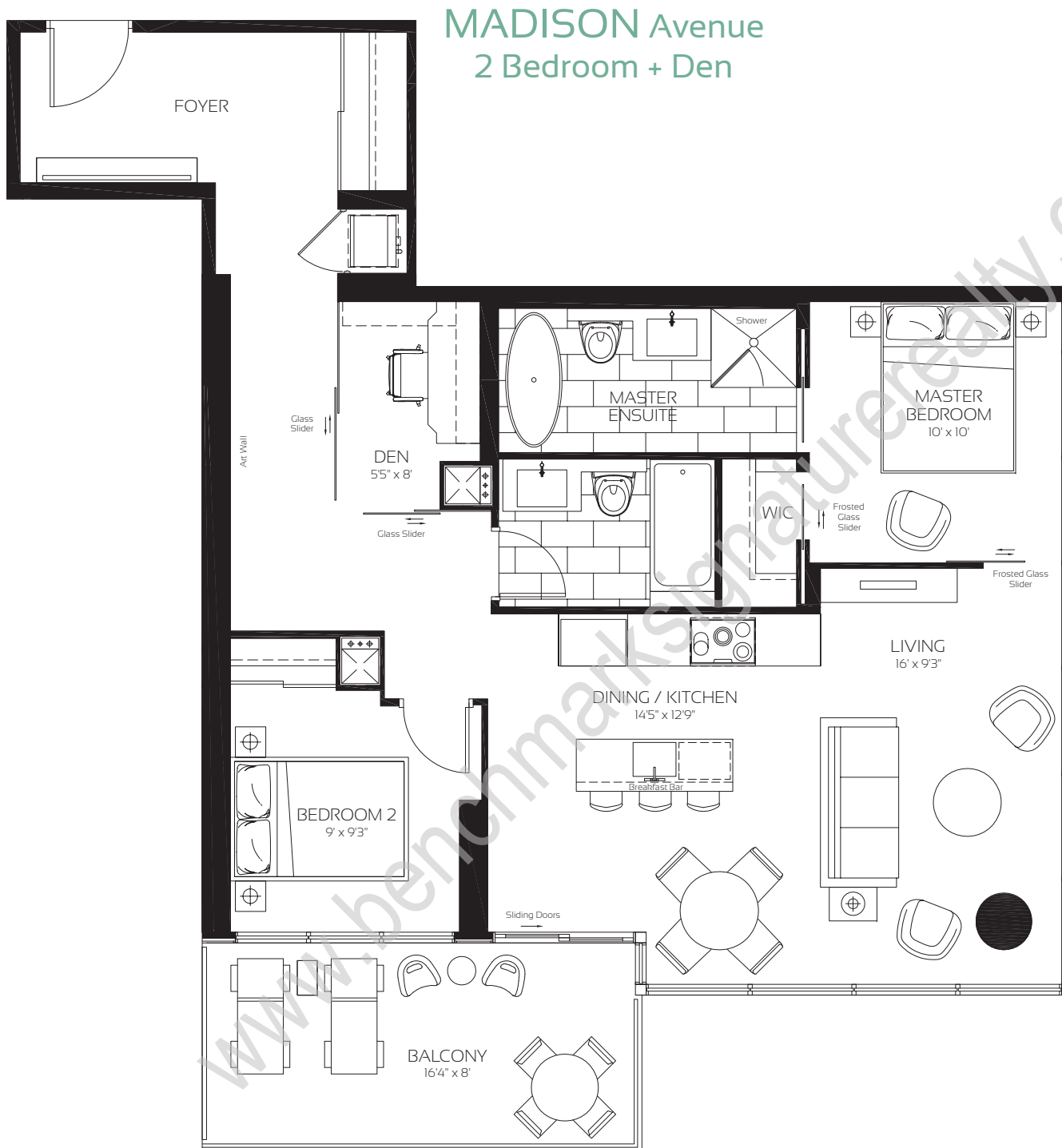


WORTH

2 Bedroom

	sq ft
Interior Area	820
Balcony Area	160
TOTAL AREA	980

Sizes and specifications are subject to change without notice. E&O.E. Actual usable space may vary from any stated floor area. All dimensions are subject to normal construction variances. Measurements of rooms set forth on any floor plan are generally taken at the greatest points of each given room (as if the room were perfectly rectangular), without regard for any cutouts. Floor measurements were calculated on the middle floor of typical floor plates.



THE RESIDENCES OF
488 UNIVERSITY AVENUE

MADISON

2 Bedroom + Den

sq ft

Interior Area 986

Balcony Area 130

TOTAL AREA 1116

Sizes and specifications are subject to change without notice. E&O.E. Actual usable space may vary from any stated floor area. All dimensions are subject to normal construction variances. Measurements of rooms set forth on any floor plan are generally taken at the greatest points of each given room (as if the room were perfectly rectangular), without regard for any cutouts. Floor measurements were calculated on the middle floor of typical floor plates.



THE RESIDENCES OF
488 UNIVERSITY AVENUE

MICHIGAN

2 Bedroom + Den

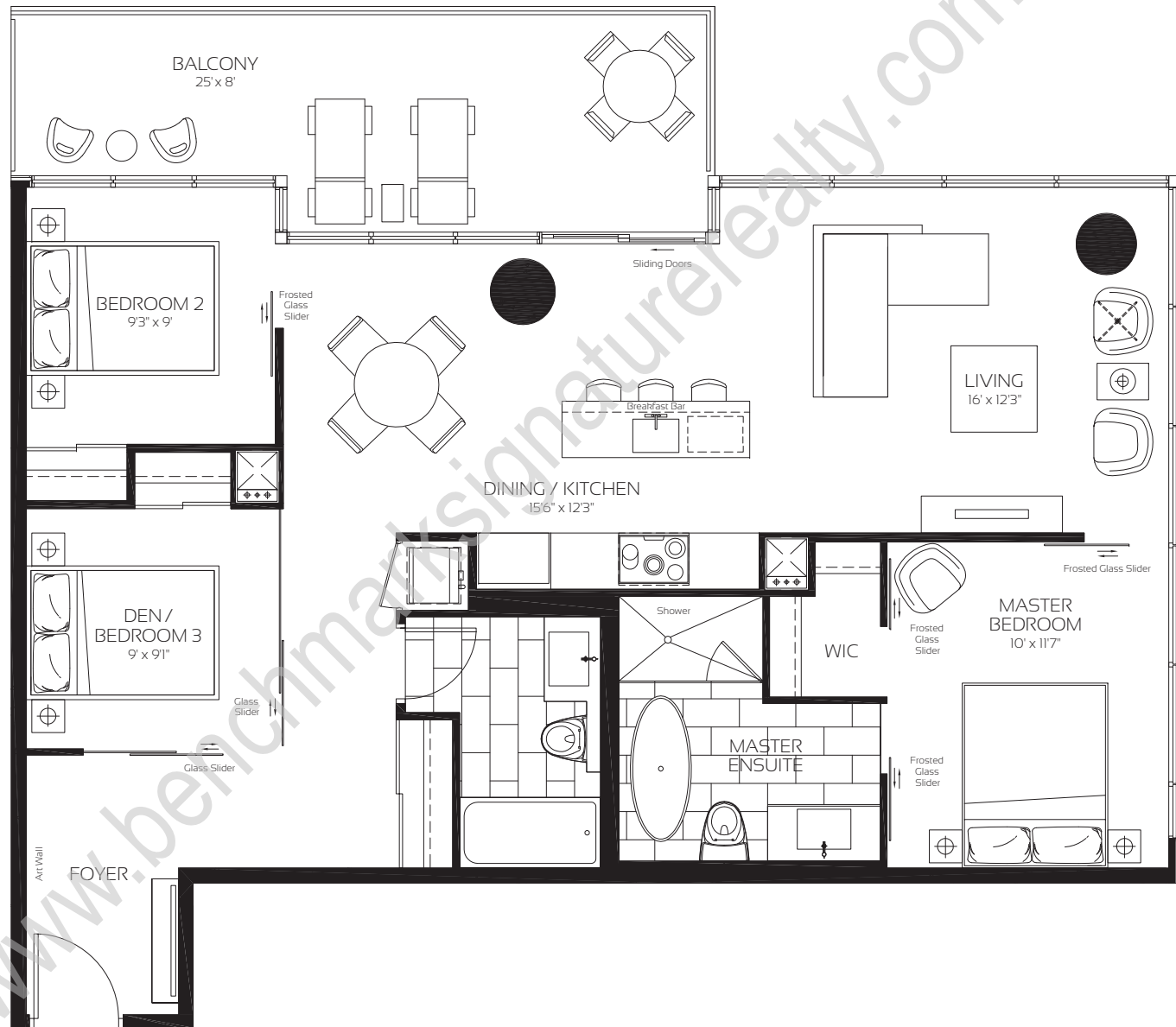
sq ft

Interior Area 1042

Balcony Area 180

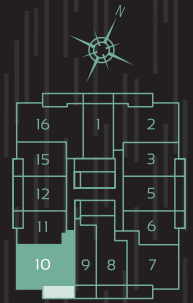
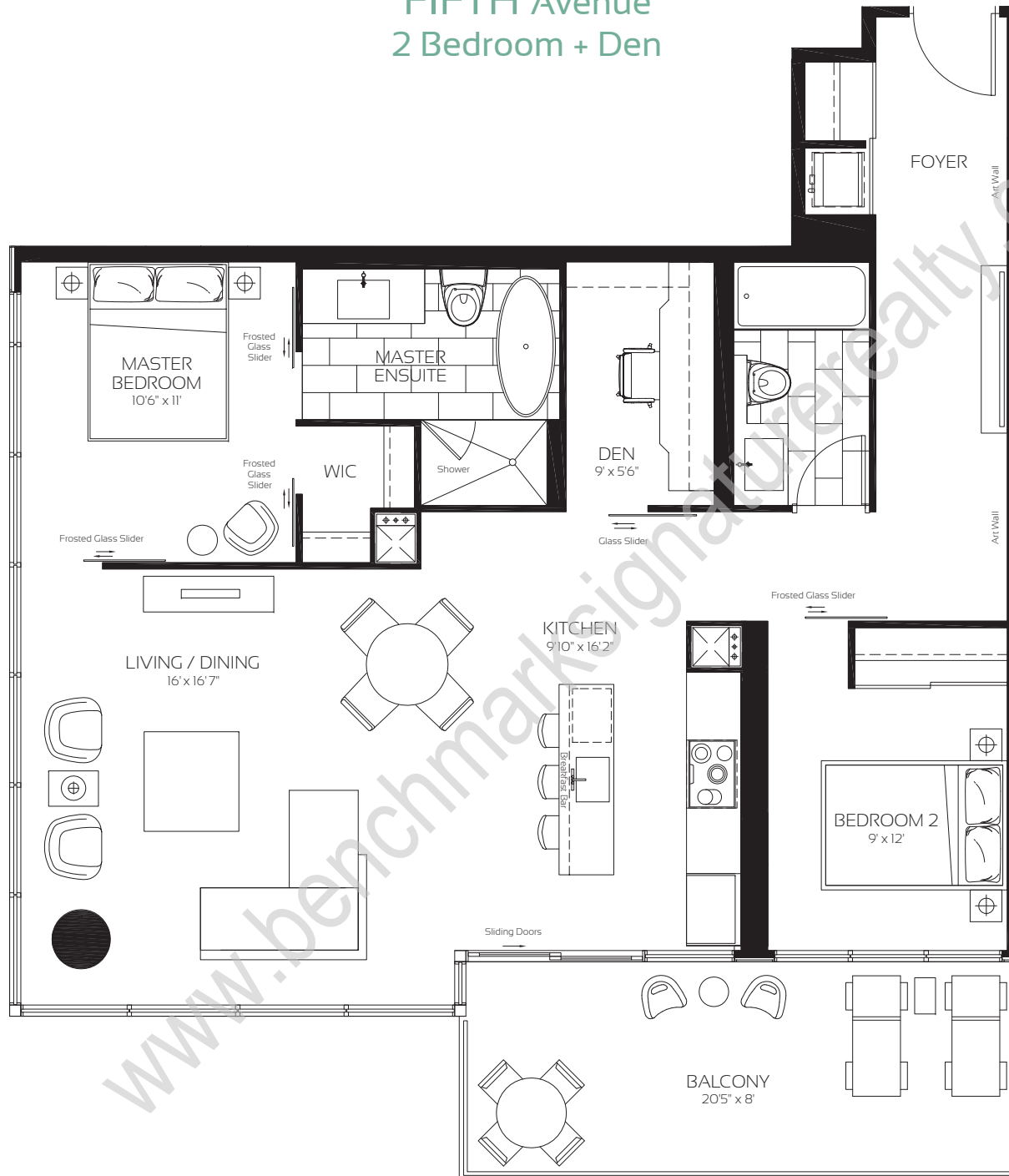
TOTAL AREA 1222

MICHIGAN Avenue
2 Bedroom + Den



Sizes and specifications are subject to change without notice. E&O.E. Actual usable space may vary from any stated floor area. All dimensions are subject to normal construction variances. Measurements of rooms set forth on any floor plan are generally taken at the greatest points of each given room (as if the room were perfectly rectangular), without regard for any cutouts. Floor measurements were calculated on the middle floor of typical floor plates.

FIFTH Avenue 2 Bedroom + Den



THE RESIDENCES OF
488 UNIVERSITY AVENUE

FIFTH

2 Bedroom + Den

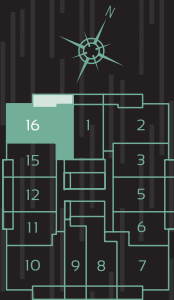
sq ft

Interior Area 1075

Balcony Area 165

TOTAL AREA 1240

Sizes and specifications are subject to change without notice. E&O.E. Actual usable space may vary from any stated floor area. All dimensions are subject to normal construction variances. Measurements of rooms set forth on any floor plan are generally taken at the greatest points of each given room (as if the room were perfectly rectangular), without regard for any cutouts. Floor measurements were calculated on the middle floor of typical floor plates.



THE RESIDENCES OF
488 UNIVERSITY AVENUE

PARK

3 Bedroom + Den

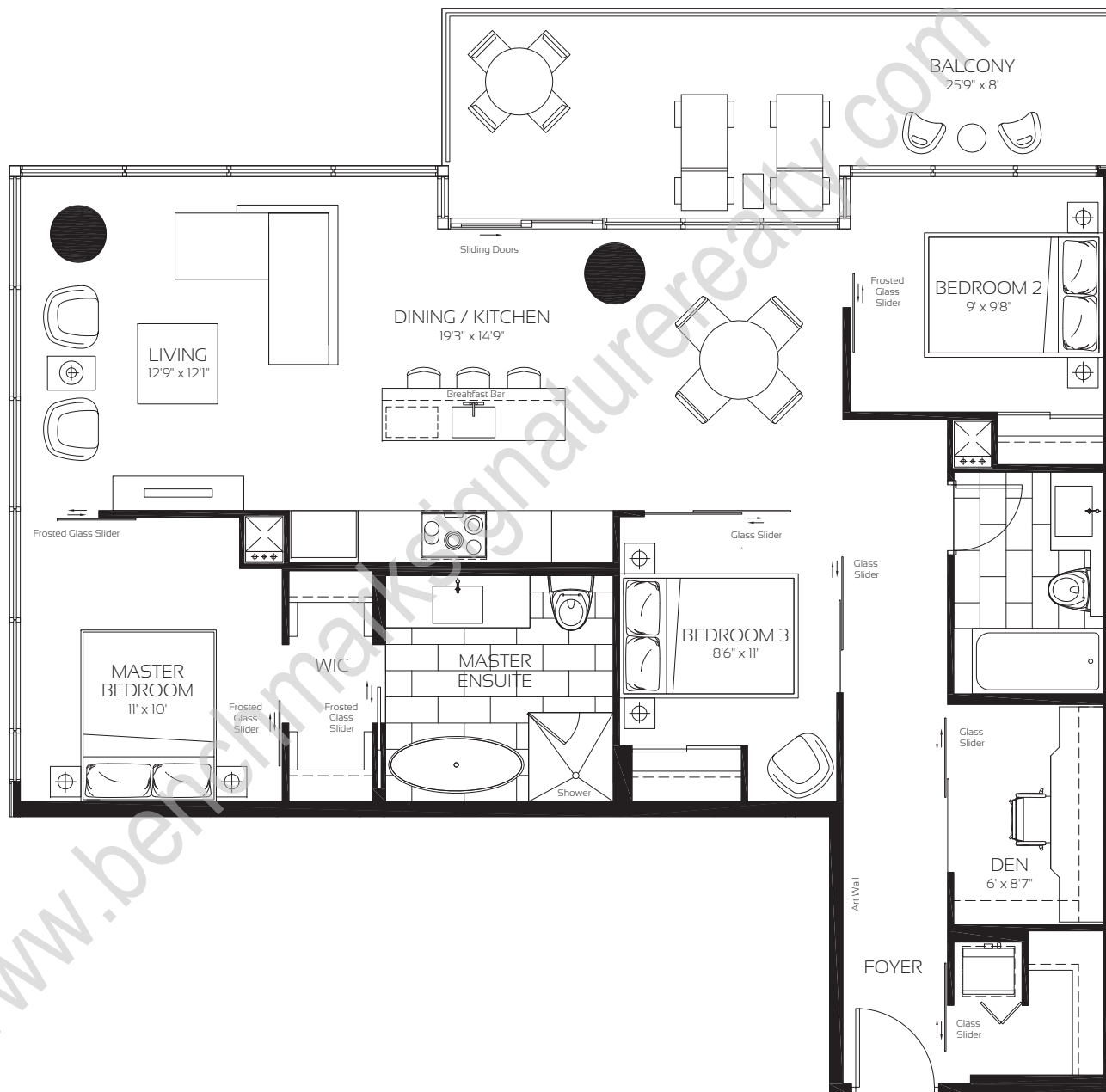
sq ft

Interior Area 1136

Balcony Area 185

TOTAL AREA 1321

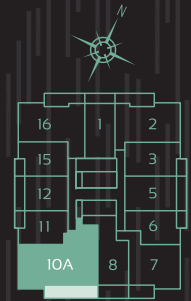
PARK Avenue
3 Bedroom + Den



Sizes and specifications are subject to change without notice. E&O.E. Actual usable space may vary from any stated floor area. All dimensions are subject to normal construction variances. Measurements of rooms set forth on any floor plan are generally taken at the greatest points of each given room (as if the room were perfectly rectangular), without regard for any cutouts. Floor measurements were calculated on the middle floor of typical floor plates.

MONTAIGNE Avenue

3 Bedroom



THE RESIDENCES OF
488 UNIVERSITY AVENUE

MONTAIGNE

3 Bedroom

	sq ft
Interior Area	1620
Balcony Area	273
TOTAL AREA	1893

Sizes and specifications are subject to change without notice. E&O.E. Actual usable space may vary from any stated floor area. All dimensions are subject to normal construction variances. Measurements of rooms set forth on any floor plan are generally taken at the greatest points of each given room (as if the room were perfectly rectangular), without regard for any cutouts. Floor measurements were calculated on the middle floor of typical floor plates.