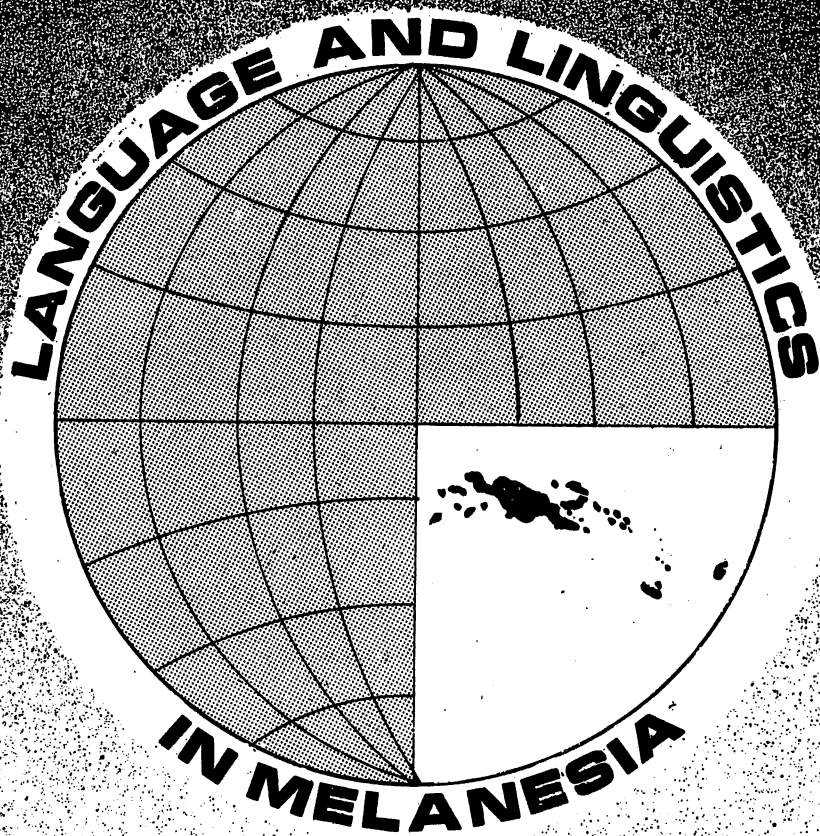


007h



Volume 16

1987 (for 1985)

Number 1-2

JOURNAL OF THE LINGUISTIC SOCIETY  
OF PAPUA NEW GUINEA

Language and Linguistics in Melanesia (formerly) Kivung is published by the Linguistics Society of Papua New Guinea.

Editor: John W.M. Verhaar  
Review Editor: Tom Dutton  
Associate Editors: Terry Crowley, Paul Geraghty, John Lynch,  
Andrew Taylor

Editorial advisors:

Robert A. Blust, University of Hawaii  
Joel Bradshaw, University of Hawaii  
William Foley, Australian National University  
Karl Franklin, Summer Institute of Linguistics, P.N.G.  
George Grace, University of Hawaii  
Kenneth Gregerson, Summer Institute of Linguistics,  
Irian Jaya  
John Haiman, University of Manitoba  
Peter Mühlhäusler, Oxford University  
Andrew Pawley, University of Auckland  
Albert Schütz, University of Hawaii  
S.A. Wurm, Australian National University

All editorial correspondence for the **articles section** should be addressed to:

John W.M. Verhaar, S.J.  
Divine Word Institute  
P.O. Box 483, MADANG  
Papua New Guinea

All editorial correspondence for the **reviews section** should be addressed to:

Tom E. Dutton  
Department of Linguistics  
Research School of Pacific Studies  
The Australian National University  
Box 4, CANBERRA, A.C.T. 2601  
Australia

All **business** correspondence, including orders, subscriptions, etc., should be addressed to:

The Secretary  
Linguistic Society of Papua New Guinea  
P.O. Box 418  
UKARUMPA, via LAE  
Papua New Guinea

Language and Linguistics in Melanesia is published in two issues a year. Volume 14 is 1983. There are no volumes for 1984 to 1986, inclusive. Volumes 15ff are being published at a rate so that volume 19 will be the last volume to be published in 1988.

Contributors should follow the stylesheet printed at the back of this volume. Contributions should be submitted in two copies.

Areally, Language and Linguistics in Melanesia covers the linguistic situation in Melanesia, where one fourth of the world's languages are spoken, as symbolized by the cover design.

Subscription rates are as follows:

Institutions	K 20.00	} includes membership of the LSPNG
Individuals	K 7.50	
Undergraduate students from Melanesia	K 1.00	

Airmail rates and rates for back issues will be supplied on request, by the secretary. Subscriptions may be remitted in USA or Australian currency as an alternative to remitting PNG kina.

**LANGUAGE AND LINGUISTICS  
IN MELANESIA**

**(FORMERLY KIVUNG)**

**JOURNAL OF THE LINGUISTIC SOCIETY  
OF PAPUA NEW GUINEA**

Volume 16

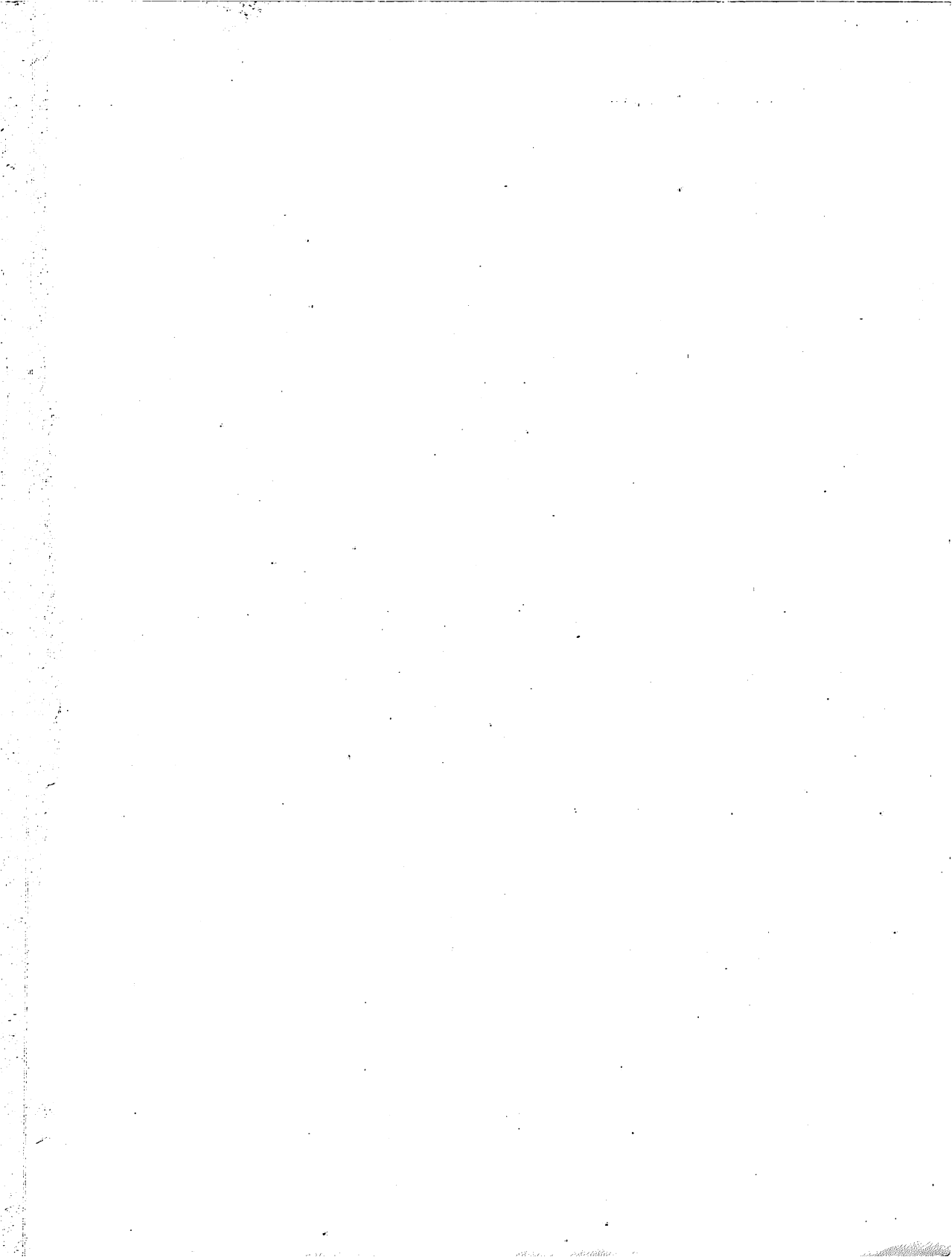
1987

No 1-2

1  
PUBLISHED BY THE S.I.L. PRINTING DEPARTMENT

PUBLISHED 1987

Printed by the S.I.L. Printing Department  
Ukarumpa, E.H.P., Papua New Guinea



## CONTENTS

Proto-Gorokan syllable structure .....	John Haiman	1-22
Kinds of information in Bukiyip oral narrative discourse .....	Robert J. Conrad	23-40
The category 'Relevance' in Menya verbal morphology .....	Carl R. Whitehead	41-53
Viewpoint in Oksapmin .....	Marshall Lawrence	54-70
How Austronesian focus works in the Misima language .....	Bill Callister	71-99
The system of classificatory particles in Kilivila reconsidered .....	Gunter Senft	100-125
Reviews: T.R. Groves et al., Kiribatese: an outline description (Frantisek Lichtenberk)		126-129
Rainer Carle et al., Gava': Studies in Austronesian Languages and Cultures (Terry Crowley)		130-135
Walter Seiler, Imonda, a Papuan language (John Haiman)		136-142

\*

Published by

The Linguistic Society of Papua New Guinea