



Benchmark Signature Realty INC. Brokerage

1020 Denison Street Unit 113

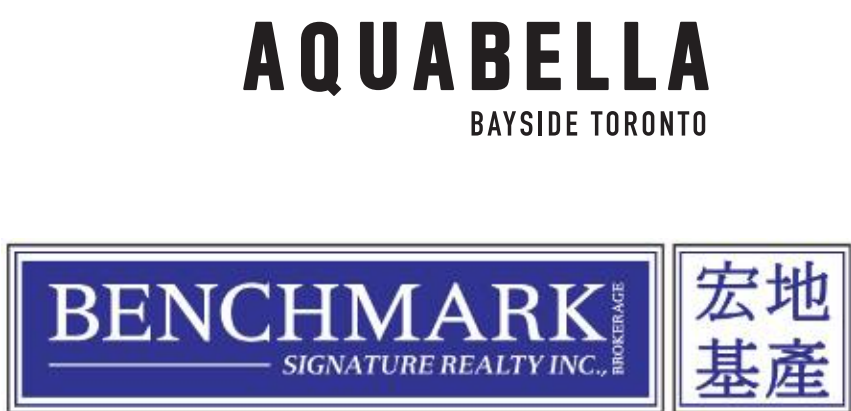
L3R 3W5 Markham Ontario

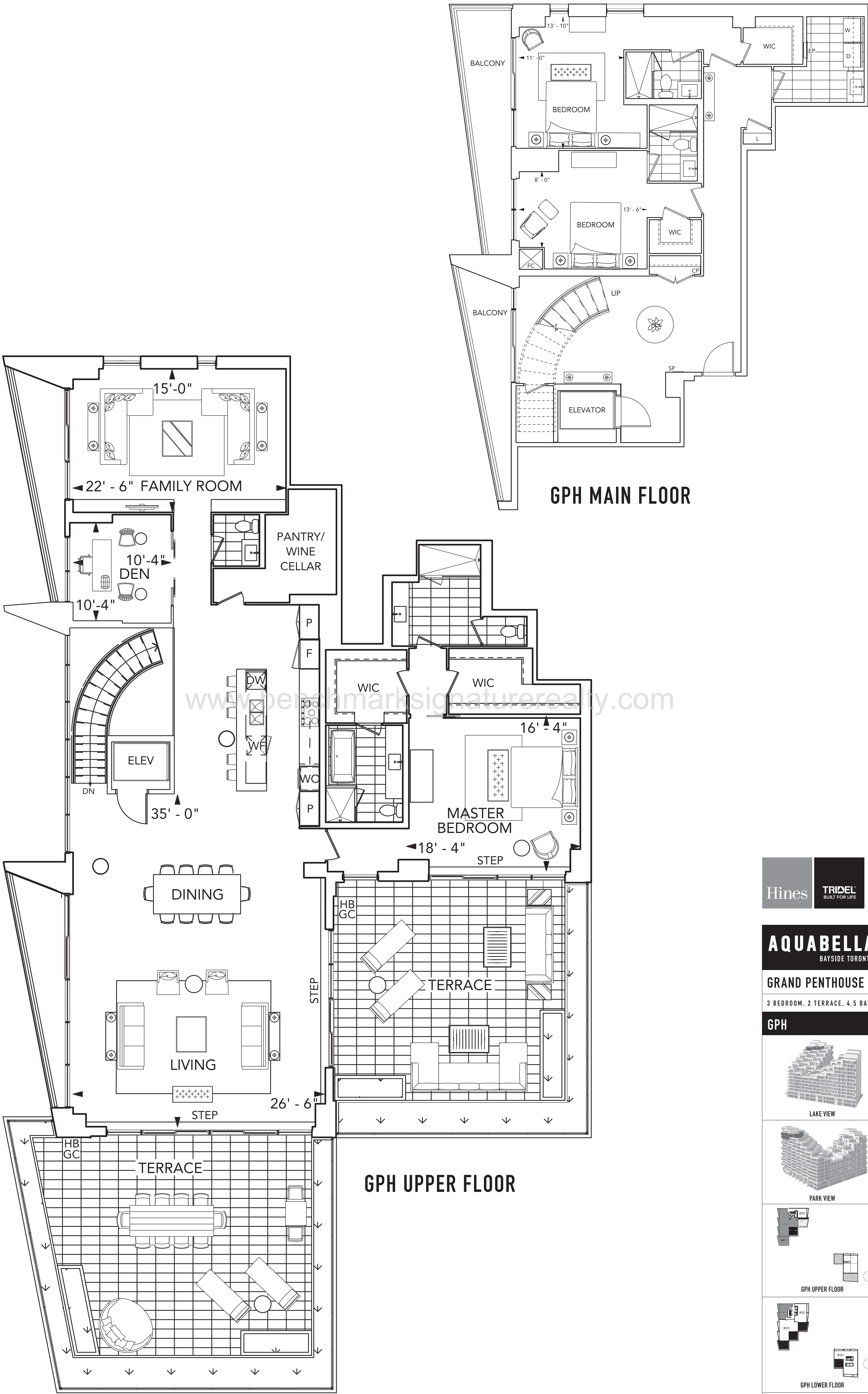
Tel 905 604 2299 Fax 905 604 0622

<http://www.benchmarksignaturerealty.com>



AQUABELLA GRAND PENTHOUSE 1 TERRACE COLLECTION



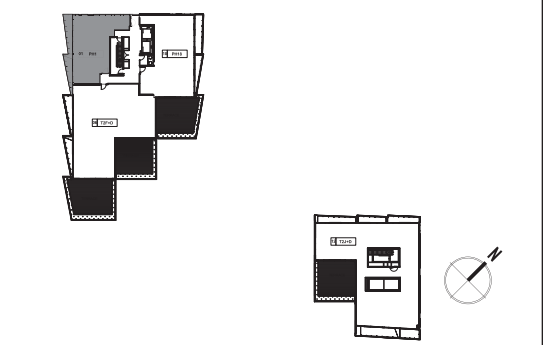
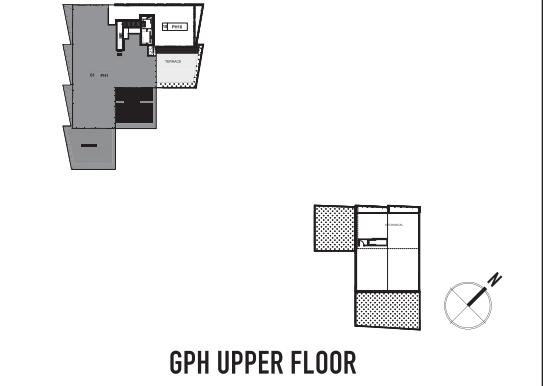
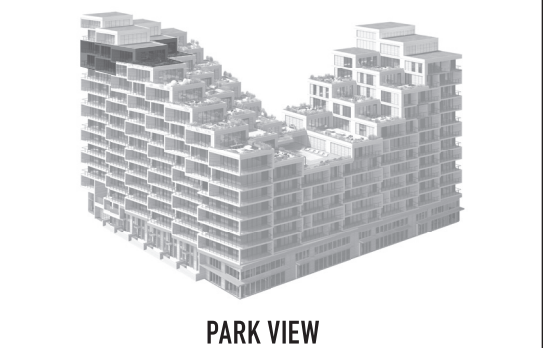
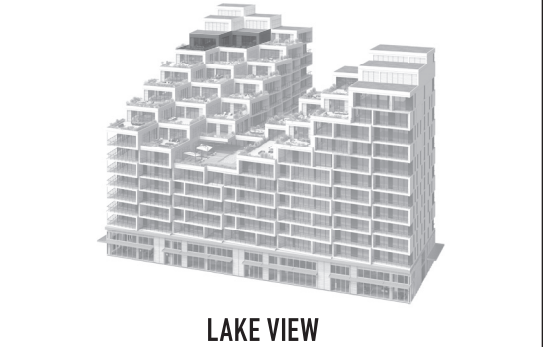


AQUABELLA
BAYSIDE TORONTO

GRAND PENTHOUSE 1

3 BEDROOM, 2 TERRACE, 4.5 BATH

GPH



tridel.com

All dimensions are approximate and subject to normal construction variances. Dimensions may exceed the useable floor area. Sites and specifications subject to change without notice. Furniture is displayed for illustration purposes only and does not necessarily reflect the electrical plan for the suite. Suites are sold unfurnished. Balcony and Façade Variations may apply, contact a sales representative for further details. Furniture, BBQs and planter locations on terraces are for illustration purposes only and subject to change. E&O.E. Tridel®, Tridel Built for Life® and Tridel Built Green. Built for Life® are registered trademarks of Tridel and used under license. ©Tridel 2016. All rights reserved. October 2016.

Hines

TRIDEL
BUILT FOR LIFE

AQUABELLA

BAYSIDE TORONTO



AQUABELLA

PENTHOUSE T3A

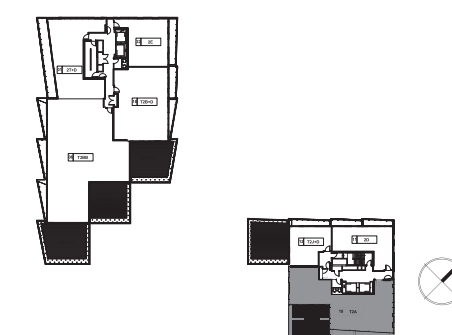
TERRACE COLLECTION





3 BEDROOM, 1 TERRACE, 3.5 BATH

LAKE VIEW



tridel.com

Hines

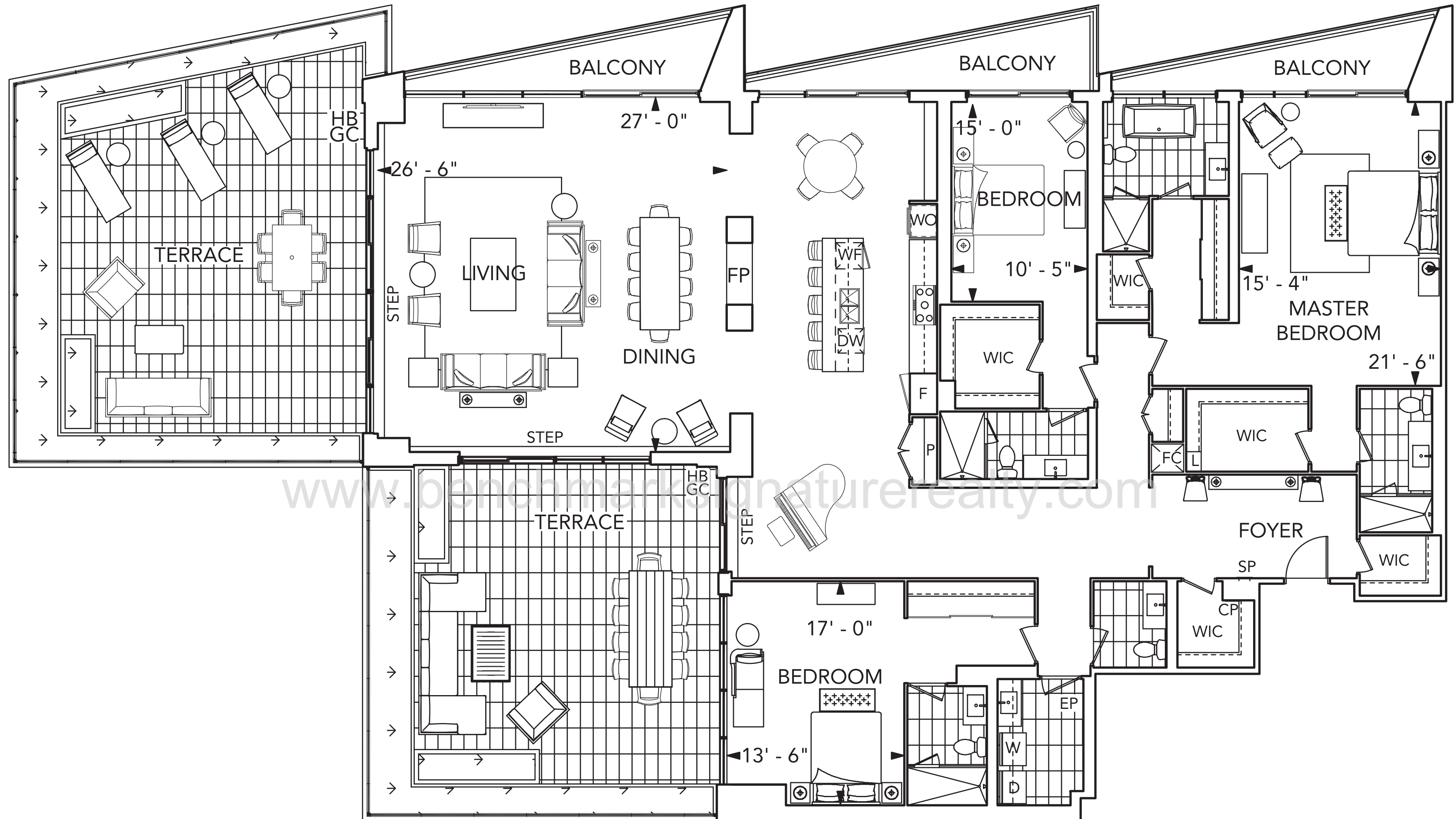
TRIDEL
BUILT FOR LIFE

AQUABELLA
BAYSIDE TORONTO



AQUABELLA
PENTHOUSE T3B
TERRACE COLLECTION





AQUABELLA BAYSIDE TORONTO

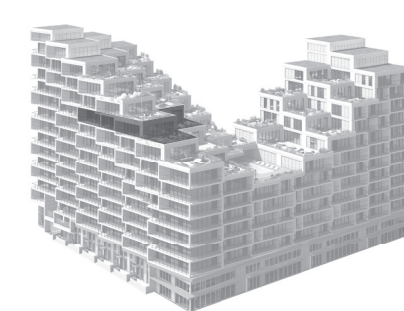
PENTHOUSE T3B

3 BEDROOM, 2 TERRACE, 4.5 BATH

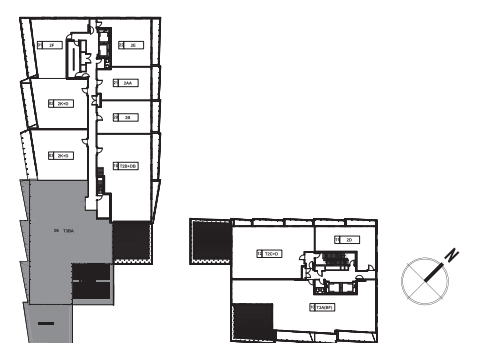
FLOOR 10



LAKE VIEW



PARK VIEW



tridel.com

All dimensions are approximate and subject to normal construction variances. Dimensions may exceed the useable floor area. Sizes and specifications subject to change without notice. Furniture is displayed for illustration purposes only and does not necessarily reflect the electrical plan for the suite. Suites are sold unfurnished. Balcony and Façade Variations may apply, contact a sales representative for further details. Furniture, BBQs and planter locations on terraces are for illustration purposes only and subject to change. E&O.E. Tridel®, Tridel Built for Life® and Tridel Built Green. Built for Life® are registered trademarks of Tridel and used under license. ©Tridel 2016. All rights reserved. October 2016.

Hines

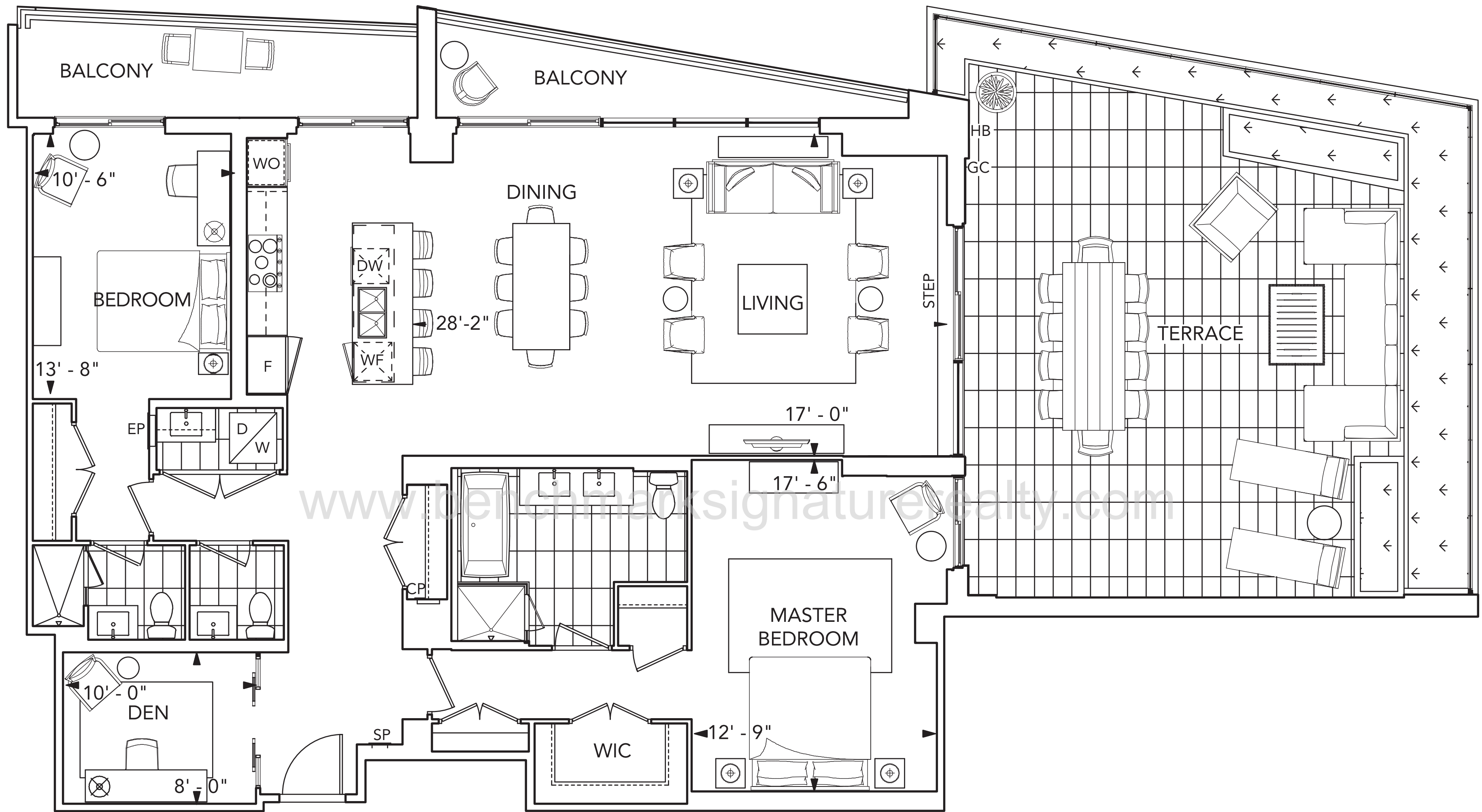
TRIDEL
BUILT FOR LIFE

AQUABELLA
BAYSIDE TORONTO



AQUABELLA
PENTHOUSE T2B+D
TERRACE COLLECTION





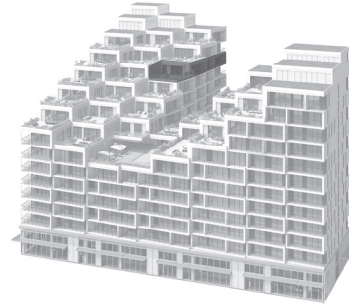
All dimensions are approximate and subject to normal construction variances. Dimensions may exceed the useable floor area. Sizes and specifications subject to change without notice. Furniture is displayed for illustration purposes only and does not necessarily reflect the electrical plan for the suite. Suites are sold unfurnished. Balcony and Façade Variations may apply, contact a sales representative for further details. Furniture, BBQs and planter locations on terraces are for illustration purposes only and subject to change. E.&O.E. Tridel®, Tridel Built for Life® and Tridel Built Green. Built for Life® are registered trademarks of Tridel and used under license. ©Tridel 2016. All rights reserved. October 2016.

AQUABELLA
BAYSIDE TORONTO

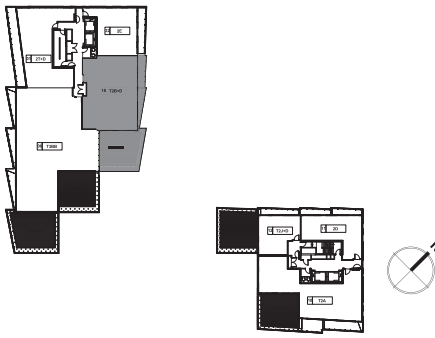
PENTHOUSE T2B+D

2 BEDROOM, 1 TERRACE, 2.5 BATH

FLOOR PH



LAKE VIEW



tridel.com