

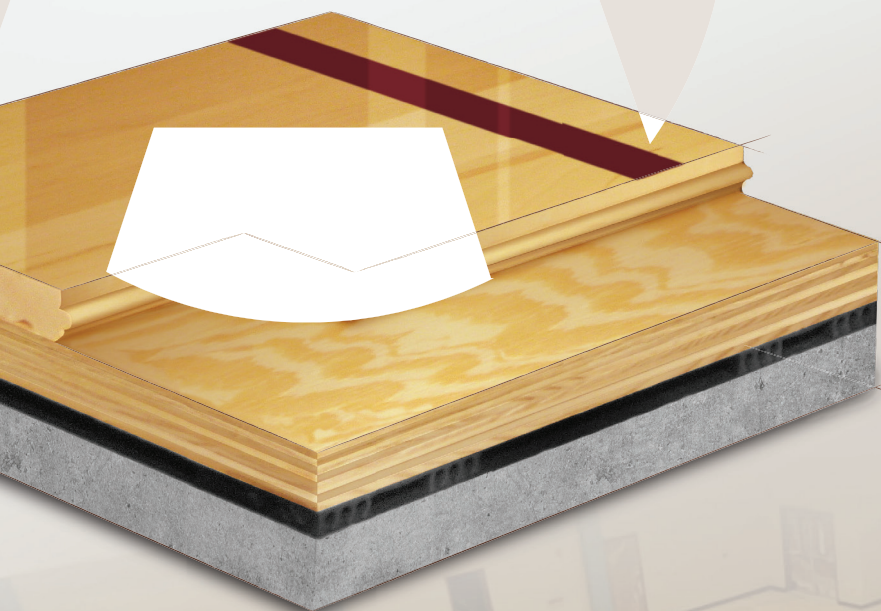


AACER

SPORTS FLOORING

AacerCush II

The AacerCush II floor system combines Aacer maple flooring with 2 layers of an APA plywood underlayment and resilient pads. The result is an economic, versatile athletic floor with increased shock absorbency and energy return that helps reduce injuries. This widely used floating sport floor system is ideal for field houses, gymnasiums, multipurpose rooms and dance floors.



see us at
Sweets.com

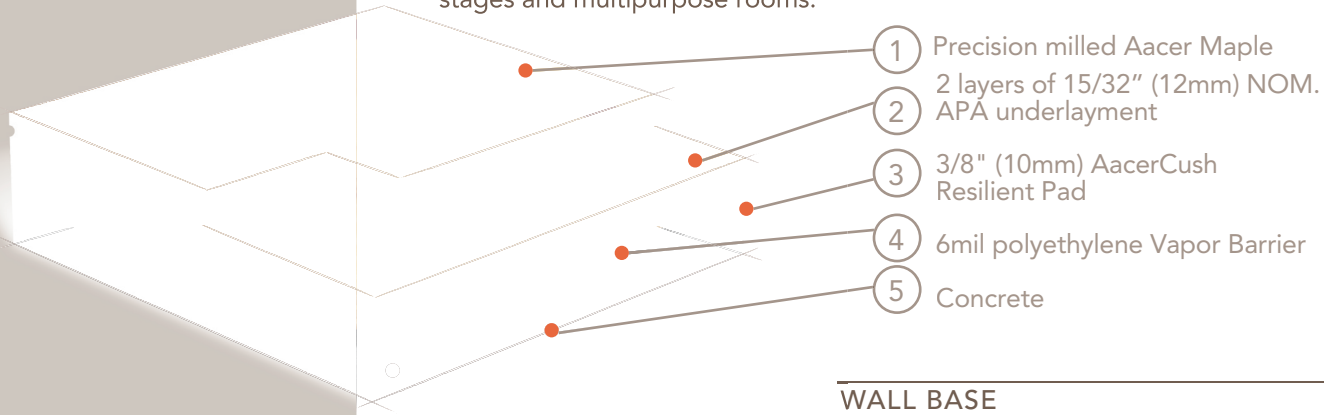


FLOATING



AacerCush II

Increased structural integrity, shock absorbency and energy return makes the AacerCush II one of the most widely accepted athletic flooring systems for field houses, combination synthetic and wood facilities, gymnasiums, dance floors, stages and multipurpose rooms.



Certified*

Green Status
LEED Contributors



FSC® Certified Maple - MRc7
FSC® Certified SubFloor Components - MRc7
EQ - MRc 4.2
Regional Materials - MRc5.1 & 5.2

Optional Versions

EcoDIN, 1/4" and 1/2" Performance Foam

Resilience

AacerCush PVC Pads

Slab Depression

3/8" (10 mm) PVC Pad
25/32" (20mm) flooring - 2 1/8" (54mm)
33/32" (26mm) flooring - 2 3/8" (60mm)

7/16" (11mm) EcoDIN Pad
25/32" (20mm) flooring - 2 1/8" (54mm)
33/32" (26mm) flooring - 2 3/8" (60mm)

1/4" (6mm) Performance Foam
25/32" (20mm) flooring - 2" (50mm)
33/32" (26mm) flooring - 2 1/4" (57mm)

1/2" (12mm) Performance Foam
25/32" (20mm) flooring - 2 1/4" (57mm)
33/32" (26mm) flooring - 2 1/2" (64mm)

Subfloor Construction

Plywood

System Type

Floating System

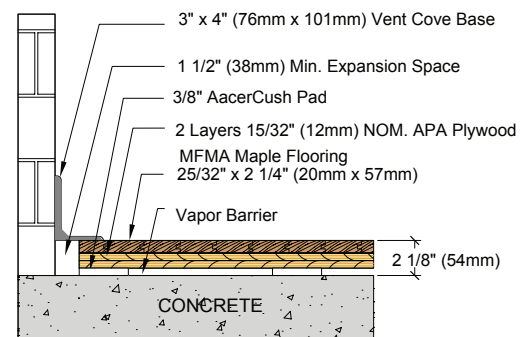
Testing Laboratory



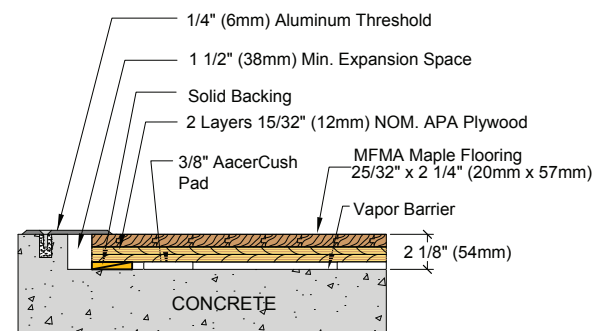
Warranty

Lifetime available

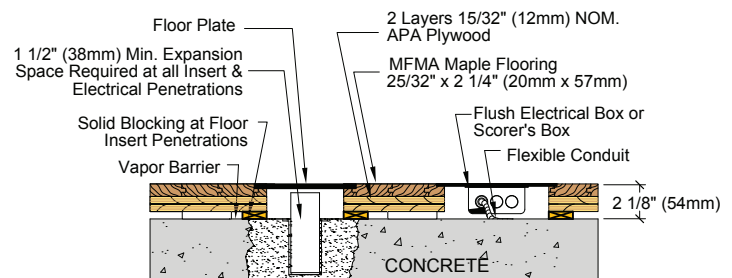
WALL BASE



THRESHOLD



EQUIPMENT



AacerFlooring.com

(877) 582-1181

It is the policy of Aacer Flooring to continuously improve its line of products. Therefore, Aacer Flooring reserves the right to change, modify or discontinue systems, specifications and accessories of all products at any time without notice or obligation to purchaser.

October 2014