

## *Birtle's Quest Suite*

### *Main Level*

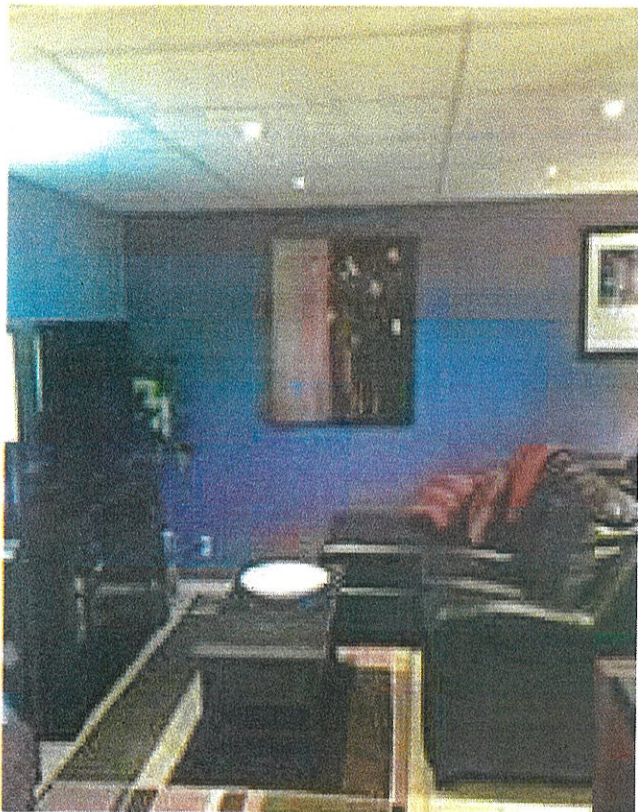
Sleeps 4 and is conveniently located on Main Street. Includes 1 bedroom with queen bed and a double sofa bed in the living room. Beautifully decorated and equipped with all the amenities including a full kitchen essentials, bedding, washer and drier, and more. It has access to outside space with a deck, patio furniture and BBQ. Includes 50" and a 42" TV that have access to satellite TV package, Netflix, Prime Video, and Crave. Wi-Fi



## *Birtle's Quest Suite*

### *Basement Apartment*

Sleeps 4 including a 1 bedroom with a queen bed and a double sofa bed in the living room. Fully furnished with kitchen essentials, bedding, washer and dryer, and more. Includes a 50" and a 32" TV that have access to a satellite TV package, Netflix, Prime Video, and Crave. Wi-Fi. Has its own separate entrance.



*Available for rent daily, weekly, or monthly.*



## *Birtle's Quest House Main Level*

Sleeps 8 with 3 bedrooms.  
Includes 1 Queen bed, 2 double beds, and a double sofa bed.  
Conveniently equipped with all the amenities including a full kitchen, bedding, washer and drier, and more. Includes 60", 40", and a 32" Smart TV's that have access to a satellite TV package, Netflix, Prime Video and Crave. Wi-Fi.



## *Birtle's Quest House Basement Apartment*

Sleeps 4 with 2 bedrooms including a queen and a double bed. Equipped with full kitchen essentials, bedding, washer and dryer, and more.  
Includes a 55" and a 42" TV that have access to a satellite TV package, Netflix, Prime Video and Crave. Wi-fi. Separate Entrance

*Available for rent daily, weekly, or monthly.*



## *Birtle's Riverside Cabin*

1 bedroom all season cabin. Sleeps 4, including 1 queen bed and 1 double sofa bed. Beautifully located alongside the Birdtail river. This beautiful, cozy cabin comes fully furnished with all dishes, small appliances, towels, linens, etc. Includes 50" and 32" TV's with access to a satellite TV package, Netflix, Prime Video, and Crave. WIFI. Outdoor amenities include access to the Birdtail River, BBQ, firepit, and a large deck with mosquito netting.



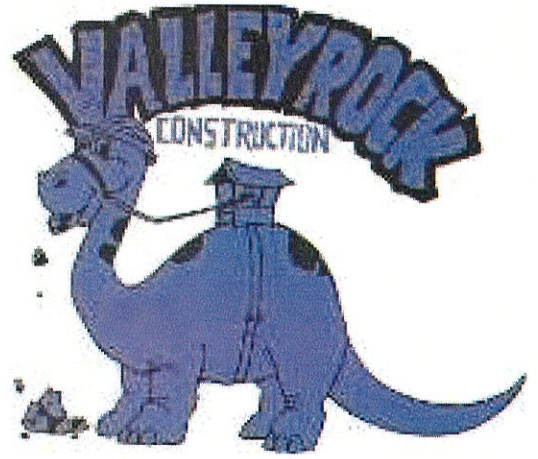
## *Camper Rental*

This 28 foot long camper with large slide sleeps 6 people. Includes 1 large bedroom with closet and dresser, double pull out couch, and fold down table. Comes fully furnished. Full bathroom includes all bathroom essentials. Includes 2 TV's one in main area and one in bedroom with access to a satellite TV package. WIFI. Outside amenities include access to the Birdtail River, BBQ and firepit.

*Available for rent daily, weekly, or monthly.*



# *Valley Rock Construction*



We are a heavy construction company located in Birtle, MB, serving a 100 km radius. We have been in the gravel construction industry for over 30 years. Custom crushing and screening of aggregate include sand, gravel, rock, clay, and topsoil. Supplying aggregate and equipment for earth work and road building, excavation, snow removal, foundations, leases, pipelines, flow lines, sewer, and water. Truck repairs and heavy truck inspections.



*Kent and Pam Naylor*

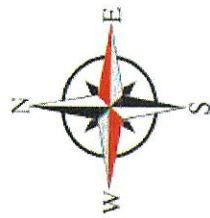
Office located at: SE 4-17-26W

Office: 204-842-5173

Kent's Cell: 204-773-6870

*[www.valleyrockconstruction.com](http://www.valleyrockconstruction.com)*





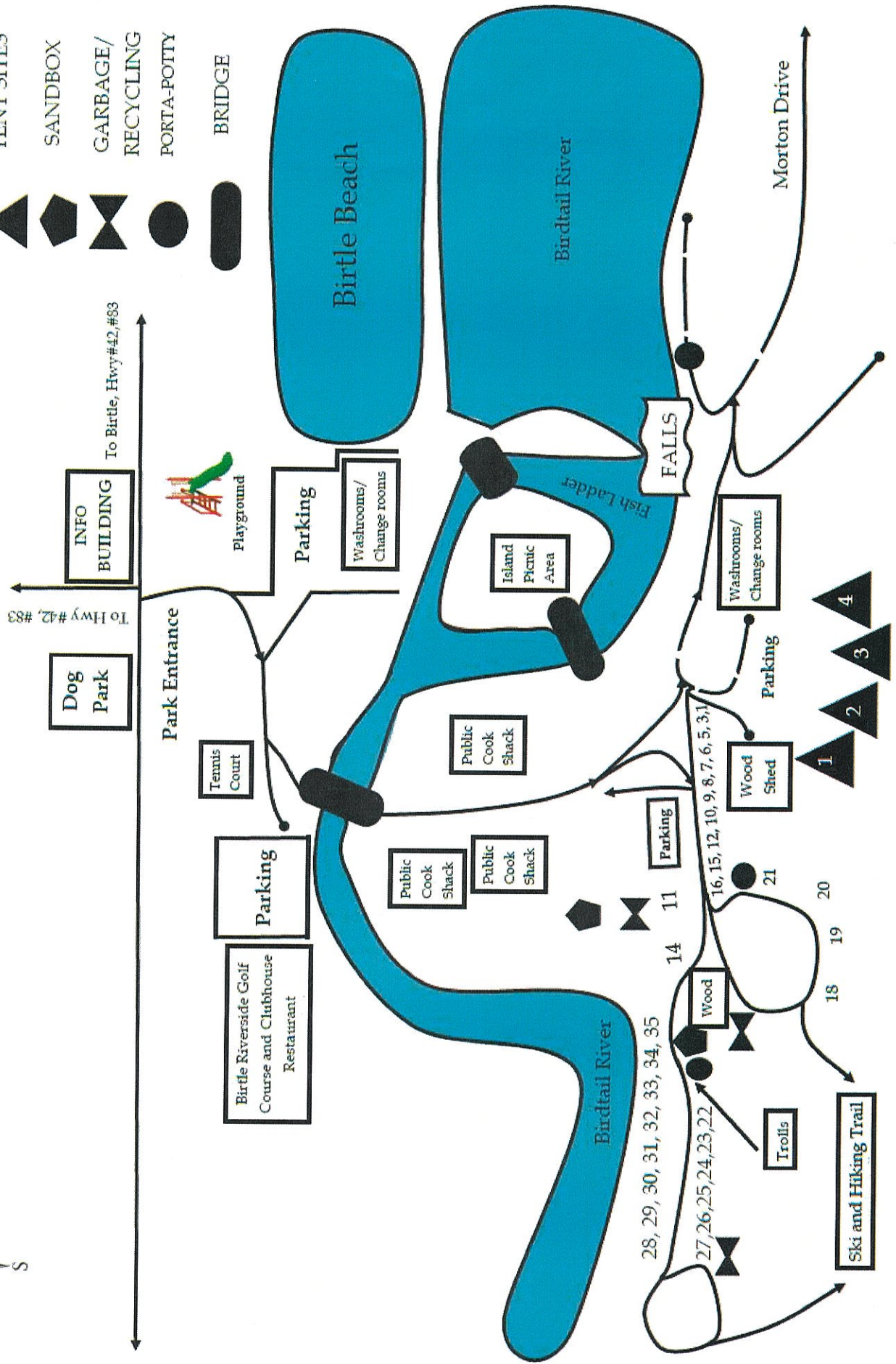
# Birtle Riverside Park & Campground Map

To book during camping season: 204-842-3830 or email [birtletouristbooth1@hotmail.com](mailto:birtletouristbooth1@hotmail.com).

Off season: 1-800-417-1122 or 204-842-3234 [www.myprairieview.ca](http://www.myprairieview.ca)

## MAP LEGEND

- TENT SITES
- SANDBOX
- GARBAGE/RECYCLING
- PORTA-POTTY
- BRIDGE





# Hooper's Lake Camping Pass

Pay for 4 nights of camping at  
Hooper's Lake and receive the  
5th night FREE!

Hooper's Lake Night 1 \$15	Hooper's Lake Night 2 \$15	Hooper's Lake Night 3 \$15	Hooper's Lake Night 4 \$15	Hooper's Lake Night 5 FREE
-------------------------------------	-------------------------------------	-------------------------------------	-------------------------------------	-------------------------------------

\$15 value

Located 3 miles West, and 2 miles North of Beulah.

Hooper's Lake provides camping, fishing, boating, kayaking, water skiing, and more.

Camping spots are on a first come, first serve basis, as no reservations are taken.

Wifi available





### Silver Bend Trail

8.2km moderate, looped trail, located near Miniota, Manitoba. Approximately 15 minutes away. Features a forest setting primarily used for hiking, walking, and nature trips. Includes beautiful views from the top of the valley.

Enjoy year round.

### Wakpa Tanka Look-Out

Campsite of the Sioux First Nations during the buffalo hunt and fur trade. One of its kind in Canada. Site lookout of surrounding area of the early lives of both Indigenous peoples, and early settlers. Located at the beginning of the Silver Bend Trail. Shows a glimpse of the Aboriginal heritage and culture from 700-1100 years ago, while enjoying views from the beautiful Assiniboine Valley.



### Uno Bridge

Located a few miles West of Beulah, Manitoba, which is just South of Birtle. The 1915 disaster of this present day 1,533 foot long bridge with steel trestles. Constructed in 1929. Original frame built in 1907. This bridge runs on the CNR main line, across the Minnewasta Creek and joins to the Assiniboine River. Enjoy the beautiful landscape while visiting the impressive piece of history.

For more information and directions, please visit the Prairie View Municipality website under the Visiting tab, and under Trails & Tours.

<http://myprairieview.ca>





# *Birtle Riverside Golf*

204-842-5364

This golf course is a beautifully situated 9 hole golf course situated in the heart of the valley, and alongside the Birdtail River in Birtle. Located in the heart of the park, beside the campground, tennis court, swimming pool, kids play park, walking trails, and more. Newly updated, licensed clubhouse with daily lunch and weekend specials available.

Memberships available for the season, as well as golf cart rentals and shed rentals. Tournaments throughout the summer. Featured men's, ladies, and mixed nights throughout the week.





# Birtle Golf Course Menu

## WRAPS

<b>Chicken Caesar</b> <i>chicken, lettuce, parmesan cheese, croutons</i>	\$8.50
<b>Beef</b> <i>ground beef, lettuce, tomato, gr. Onion, salsa &amp; sour cream</i>	\$9.25
<b>Quesadilla</b> <i>chicken or beef, cheese, gr. Onion tomato, salsa, sour cream</i>	\$9.00

## DINNERS

<b>Chicken Finger Dinner</b> <i>3 chicken fingers, fries &amp; dipping sauce</i>	\$12.00
<b>Fish &amp; Chips</b> <i>2 pieces of fish, fries, lemon wedge &amp; tartar sauce</i>	\$13.50
<b>Hamburger Steak</b> <i>2 hamburger patties, topped with fried onions, mushrooms and gravy. Served with fries</i>	\$15.75

*upgrade any dinner with sweet potato fries, curly fries, onion rings or poutine for \$2.50*

## APPETIZERS

Mozza Sticks (6)	\$8.50
Pickel Spears	\$8.50
Battered Mushrooms	\$8.50
Dried Ribs	\$9.00
Breaded Shrimp	\$9.00
Popcorn Chicken	\$7.00
Popcorn Chicken Poutine	\$11.50
Chicken Fingers	\$3.00 each
Wings (8)	\$10.00
Wings (12)	\$14.00

## DRINKS

Canned Pop	\$1.77
Water	\$1.77
Poweraid	\$3.25
Energy Drinks	\$3.75
Coffee or Tea	\$1.77

## ALCOHOL

Domestic Beer	\$6.00
Imported Beer	\$6.35
Single Shot	\$6.00
Double Shot	\$8.50
Coolers	\$6.35
Paralyzer	\$8.50
Glass of Wine	\$6.75
Fish Bowl	\$12.00

*Alcohol is sold for consumption on the Birtle Golf Club property only.*

*White or Red*

Menu as of  
2021 season



**BREAKFAST****Classic Breakfast**

Bacon, Ham or sausage with 2 eggs, hashbrowns &amp; toast

\$9.00

**Breakfast Skillet**

A bed of hashbrowns, topped with scrambled eggs, melted cheese &amp; choice of 2 fillings

\$10.00

Omlette: 2 eggs, cheese, choice of 2 fillings, toast &amp; hashbrowns

\$9.00

French Toast: 3 slices of bread, dipped in batter &amp; grilled

\$9.00

Breakfast Sandwich: egg, cheese with choice of meat

\$6.00

Breakfast Wrap: 2 scrambled eggs, cheese, choice 2 fillings, sour cream &amp; salsa

\$9.00

**FILLINGS:**

Bacon, Ham, green onion, tomato, mushrooms.

Extra fillings \$1.50

Extra Cheese \$1.50

**SANDWICHES**

Any Sandwich can be made into a wrap at no extra charge

Club House

\$10.00

BLT

\$6.00

Denver

\$8.00

Grilled Cheese

\$5.00

Add ham or bacon for \$1.00

Egg Salad

\$6.00

Chicken Salad

\$6.00

**BURGERS:**

5 oz. homemade burger includes lettuce, tomato, onion, pickles, ketchup, mustard &amp; mayo

**Platter**

Classic Burger

\$6.50

\$9.00

Classic Cheeseburger

\$7.50

\$10.00

Bacon Cheesburger

\$8.50

\$11.00

Chicken Bacon Ranch

\$9.50

\$12.00

Riverside Burger

\$15.00

\$17.50

2 patties, cheese &amp; bacon

Chicken Burger

\$6.50

\$9.00

add cheese .50

add Bacon \$1.00

**SIDES**

Fries

small

\$3.25

large

\$5.75

Curly Fries

small

\$4.25

large

\$6.75

Sweet Potato fries

small

\$4.00

large

\$6.50

Onion Rings

small

\$4.00

large

\$6.50

Poutine

small

\$5.25

large

\$7.75

Poutine - Curly Frie

small

\$6.25

large

\$7.75

Gravy

\$1.75

Soup of the Day

\$4.50

**SALADS**

salads served with garlic toast. Upgrade to cheese toast for \$1.00

Caesar Salad

\$8.50

Tossed Salad

\$8.00

Taco Salad

\$11.75

add grilled chicken

\$2.00

Please see other side  
for drinks, wraps,  
appetizers & fries



# WELCOME TO BIRTLE!

## **ACTIVITY OPPORTUNITIES IN BIRTLE:**

- Camping
- Youth soccer
- Youth baseball
- Ice-Skating (youth to adult programs) includes Can Skate, hockey, figure skating
- High school Football & Rugby sports
- Golfing
- Tennis
- Volleyball ( adult non-competitive)
- Fitness Classes all ages, all levels
- Fitness Co-op (ages 14 and up)
- Summer Swim Programming
- Curling, Senior Floor Curling
- Hunting and Fishing
- Canoeing & Kayaking
- Hiking/Cross Country Ski Trails
- Archery
- Rumpled Quiltskins (Quilting Club)
- Various Recreational Programming and Educational Courses
- Adult Art Club
- Birtle Drop In Centre (ages 25 and up)
- Birtle Library and book clubs, writing club
- Playground and Beach
- Many more!

**Please contact CDC staff @842-3602 or  
Valley Rec @ 842-3460 for more information.**

*\*Please note that not all activities are offered all year long. Due mainly to weather, some programs may be offered at certain times of the year.*



# WELCOME TO BIRTLE!

## **VOLUNTEER ORGANIZATIONS IN BIRTLE:**

- \* Playground Committee
- \* Birdtail Country Museum Board
- \* Birtle Agricultural Society (Ag Fair, mud bog)
- \* Birtle Emergency Measures Organization (BEMO)
- \* Birdtail Fitness Coop
- \* Birtle Lions Club
- \* Birtle and Foxwarren Sports Committees /Clubs including  
*Tennis, Curling, Golf, Hockey, Figure Skating, Cross Country Ski, Trails*
- \* School sports coaches, managers and club leaders
- \* Birtle in Bloom committee
- \* Parent Advisory Councils for Schools
- \* Church committees and youth groups
- \* Palliative Care
- \* Food Bank Committee
- \* Snake Creek Wildlife Association
- \* The Value Shoppe
- \* The Classic Garden
- \* Fire Department
- \* MorningStar Daycare

**For more information on any of these groups or to find out how to participate, please contact:**

**CDC staff @842-3602 or  
Valley Rec @ 842-3460 .**



# ***ABOUT BIRTLE!***

## **INFORMATION:**



### **COME TO SEE US ON MAIN STREET**

**COMMUNITY DEVELOPMENT CORPORATION BUILDING  
684 Main Street, Birtle, MB**

***Our offices are here to help you find the information you need:***

- ◆ Valley Recreation: 9:00 to 5:00— Monday to Friday 204-842-3460
- ◆ Birtle and District Community Development Corp.  
9:00 to 5:00—Monday to Thursday 204-842-3602

**MUNICIPAL OFFICE FOR  
BIRTLE TOWN & RURAL MUNICIPALITY  
678 Main Street, Birtle, MB**

- ◆ Town Office: 8:30 am to 5:00 pm— Monday to Friday 204-842-3234



## BIRTLE, MANITOBA



*Also visit us at*  
***www.BIRTLE.ca***



This scenic valley community with its beautiful rolling landscapes and contagious community spirit beckons you to stay and make Birtle more than just a place to visit.

Come and enjoy *Scenery, Serenity and Safety.*

### RECREATION OPPORTUNITIES

The community of Birtle is nestled in the beautiful Birdtail Valley, which cuts deeply into the prairie landscape and is a beautiful backdrop for all outdoor activities in all seasons. Recreational amenities in the area are diverse and well developed.

The facilities for summer sports include:

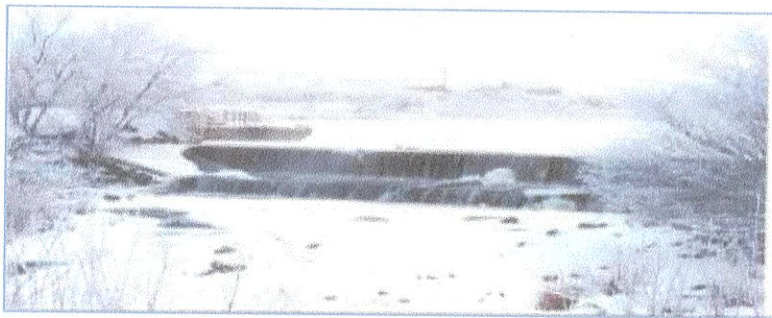
- Golf Course
- Tennis Courts
- Swimming Area and Beach
- Fair Grounds
- Ball Diamonds
- Play Grounds
- Soccer Pitch
- Basketball Court
- Hiking/Mountain bike Trails
- Park and Campground
- Football Field





The Winter sports and activities include:

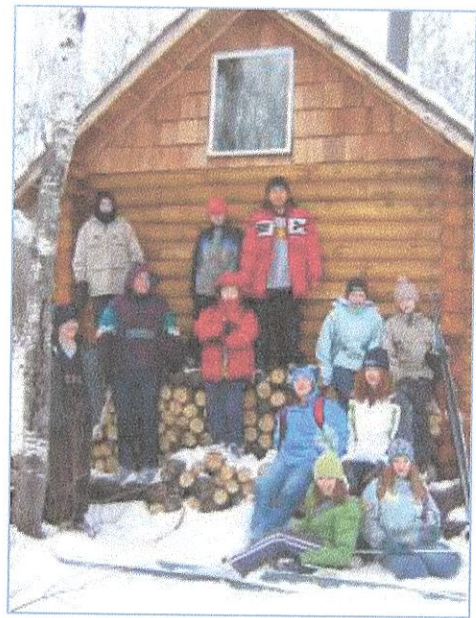
- Cross Country Ski Trails
- Snowmobile Trails
- Ice Fishing
- Ice Skating
- Hockey
- Curling
- Fitness & Zumba classes
- Fitness Centre
- Archery
- Adult Volleyball
- Adult Badminton
- Senior's Drop In Activities
- Sleigh rides



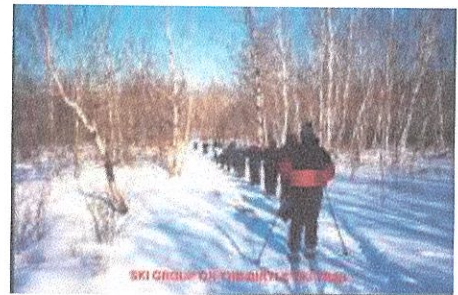
*Early winter in the park*



*Annual Agricultural Society Christmas Sleigh Ride*



*Ski out to the warm up cabin*



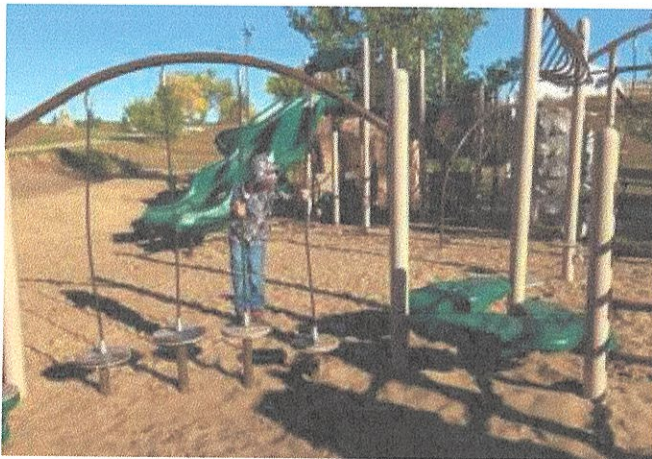
*A game of shinny on the River*



## GOLF COURSE

Birtle has a challenging, architecturally designed, irrigated nine hole Golf Course along the Birdtail River. The licensed clubhouse offers a place to relax while taking in the beautiful views.

The course is located in Birtle Riverside Park just two minutes from downtown. No line ups or need to book tee times makes it convenient for your lifestyle. Golf all day and season pass rates are available and very affordable. Check [www.birtle.ca](http://www.birtle.ca) for more details. After a round of golf you can take a break at the licensed restaurant with indoor, outdoor and screened in seating areas or enjoy swimming, tennis, camping or fishing just a pitching wedge away.



*NEW in 2013 - playground designed for all ages*



*Camping in Birtle Riverside Park*



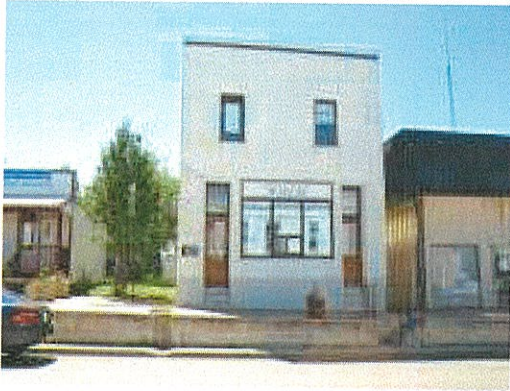
*Enjoy a leisurely paddle or sail*



*Tennis Courts in the Park*



## SERVICES/SHOPPING



Birtle provides the best of both worlds, being in the safety and serenity of a small rural community, and close to urban centres to enjoy additional amenities.

Major centers offer specialized shopping and a variety of cultural events etc.

Brandon, MB – 1.5 hours away

Yorkton, SK – 1.5 hours away

Winnipeg, MB – 3.5 hours away

Regina, SK – 2.8 hours away

Assessippi, MB – 1 hour

Clear Lake, MB 1.5 hours away

Cell Service and High Speed Internet in Birtle and the surrounding area keeps the world at your fingertips. A tower provides cell service to all areas of our valley community.

St. Lazare is a neighbouring French speaking community that is located approximately 15 minutes West of Birtle. They offer a K-12 School in French. This community is home to a major Furniture and Carpet store where you can purchase all your household appliances, flooring, and furniture. Free delivery for your convenience. St. Lazare also has a convenience store as well as bar with vendor.

The Community of Birtle has all necessary services and is in close proximity to other communities if your requirements cannot be met locally.

Our major services include medical services, financial institutions, post office, pharmacy, legal and accounting services, automobile dealership, service stations, accommodations, grocery store, restaurants, giftware, lumber, hardware, insurance, tire shop, agriculture supplier, trades, wellness and alternative health therapists and practitioners, plus more.



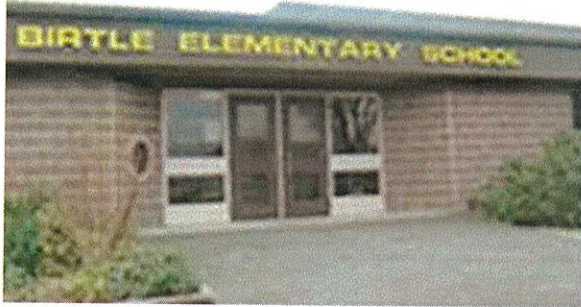
*Main Street in Birtle*

By Driving 45 Minutes or less to other communities you will be able to access/utilize:

- Movie theatres
- 7 Golf courses
- 4 Outdoor public swimming pools
- 1 Indoor public swimming pool
- Carpet Warehouse outlet
- 3 Furniture Stores
- 2 Home Decorating Stores
- Community College Satellite Campus
- Optometrists Clinics
- Chiropractor Offices
- Physiotherapy Practices
- Several Clothing Stores



Our local Birtle Branch of the Parkland Regional **Library** has a permanent selection of books, magazines, videos, talking books, and large print books. The Library has material that rotates every 3 months with other branches to ensure a new supply for readers of all ages to enjoy. Items not in stock can be requested.



Birtle **Elementary School** (K-4) and **Collegiate** (5-12) have all the amenities modern facilities have to offer. Well-equipped classrooms and organized extra curricular activities assist in offering quality education. A **Nursery School** and licensed **Day Care** facilities provide pre-schoolers an opportunity to develop social, physical, and creative skills.

The **Curling Rink** is the centre of much activity all winter. Four sheets of artificial ice and a junior curling program ensure everyone has an opportunity to take part.



The **Birtle and District Community Centre** is a modern arena with a large artificial ice surface, and a spacious indoor viewing area. Here you can observe or participate in Hockey or Figure Skating. You and your family can also enjoy a leisurely skate during public skating hours.

During the summer months, the Arena is the centre for the annual **Agriculture Society Fair**. On the grounds you have the opportunity to see a full slate of classes at the light and heavy horse rings and partake in many forms of entertainment.

The adjacent **Baseball Diamonds** are a hub of activity in the summer months where sport fans are able to watch minor ball.



## SAFETY

Birtle is a proactive community. Every effort is made to ensure that the high standard of safety in our community is maintained. The **Royal Canadian Mounted Police** (RCMP) detachment is situated 25 minutes east of Birtle, and offers full police service to the Birtle area. The community, with the cooperation of the RCMP, also run a Neighbourhood and Rural Crime Watch programs. These efforts further ensure safety for our neighbours, our children and ourselves.

A fully trained and equipped volunteer **fire-fighting** force services the Town and Rural Municipality of Birtle. A state of the art fire hall, equipped with modern equipment, services our community and area efficiently.

The local volunteer **Ambulance** service has personnel trained to EMT and First Responder levels. **Air Ambulance** is available from nearby airports, 25 and 35 minutes from Birtle.

*The department poses  
with their new truck!*

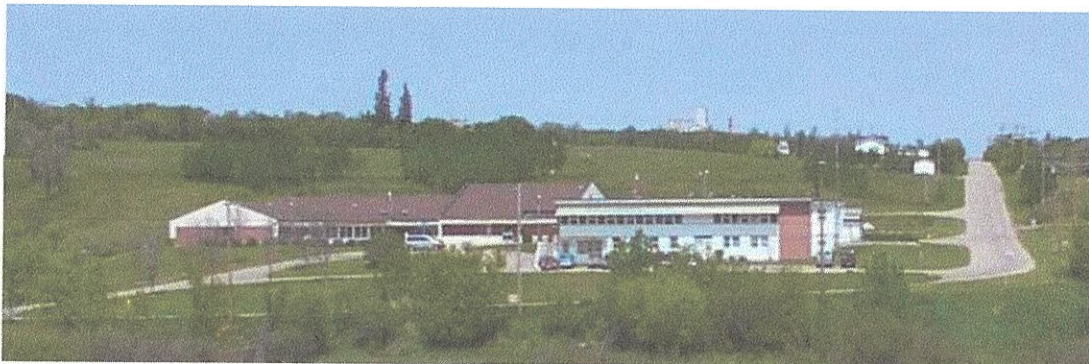


*Inside Birtle Fire Hall*



## FACILITIES

Birtle District **Health Services Centre** is an accredited facility housing the medical clinic, lab and x-ray, the personal care home, ambulance and community services.





*Falls at Birtle  
Riverside Park*



### SERVICE CLUBS AND ORGANIZATIONS

As in most small towns, it is our volunteers that keep many service and recreational groups and facilities going. Following is a partial listing of organizations that are run by local volunteers. There is an opportunity for people of all ages to become involved with any of these organizations.

- Golf Club
- Curling Club
- Tennis Club
- Cross Country Ski Club
- Figure Skating Club
- 4 – H Club
- Crop Club (Scrapbooking)
- Quiling Guild
- Birtle Lions Club
- Museum Board
- Birtle & District Community Development Corp.
- Recreational Men's and Women's Hockey
- Birtle Minor Hockey
- Birtle Minor Ball
- Snake Creek Wildlife Association
- Birtle In Bloom Committee
- Agricultural Society
- Royal Canadian Legion & its Auxiliary
- Food Bank
- Palliative Care Group
- Several Church Groups

**Valley Recreation District** organizes sports activities and short enrichment courses such as computer skills, craft workshops, dancing, cooking, first aid, etc.



The *Birtle in Bloom Committee* is committed to fostering civic pride, environmental responsibility and beautification throughout the Birtle community. This committee is a group of volunteers that exemplifies community spirit and shows what can be done through a committed organization.

Through their hard work and the involvement of everyone from seniors to youth, Birtle has successfully captured two National Communities in Bloom Titles, with special recognition for tidiness, pocket gardens and the Riverside Park and for environmental awareness.



The **Birtle Community Hall** is a facility marked for events such as dances, socials, weddings, concerts and Bingo.

The **Birdtail Fitness Club Co-op Inc.** is a fitness facility in the Birtle and District Community Development Centre. The member owned Co-operative facility is accessible 24 hours per day. It can be utilized by all individuals for a fee. The club has several cardio machines, weight machines and free weights. You can also enrol with a personal trainer if you choose.



A **Seniors Club** and **Drop Inn Centre** provide activities, games, entertainment and suppers to take part in.

The Birtle **Handi-van** is available for local or out of town trips.

#### **CONTACT INFORMATION:**

For more information on the community of Birtle please contact:

**Birtle and District CDC**

Box 598 Birtle, Manitoba R0M 0C0

Phone: (204) 842-3602

Email: [edo@birtle.ca](mailto:edo@birtle.ca)

OR

**Prairie View Municipality**

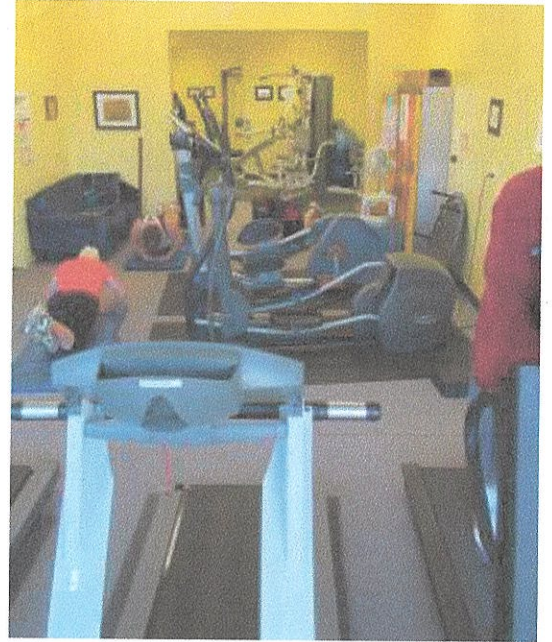
Box 70 Birtle, MB R0M 0C0

Phone: Toll Free 1-800-417-1022 or  
(204) 842-3234

Fax : (204) 842-3496

E-mail: [cao@birtle.ca](mailto:cao@birtle.ca)

Visit us online at [www.birtle.ca](http://www.birtle.ca)



*Fitness Facility*



*Morton Manor  
Senior Housing*

Birtle has five **Senior Housing Complexes** to ensure adequate facilities for this population group



*Lions Village 55+  
Life Lease Housing*



# *Birtle Centre for the Arts*

## *Gallery in the Garden*

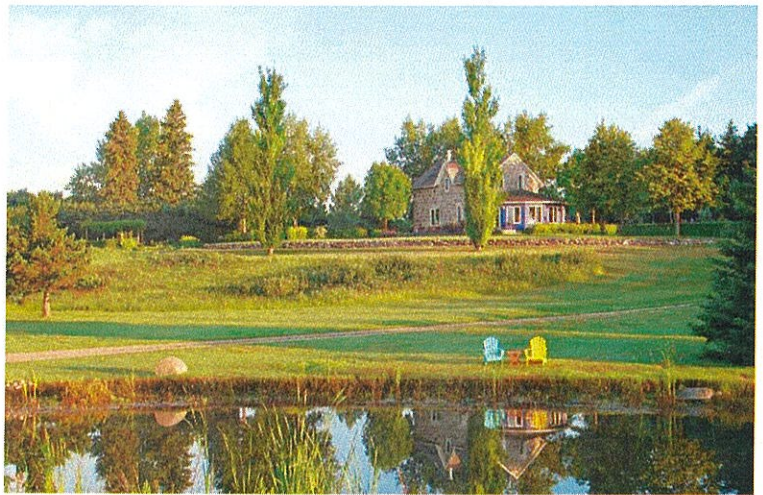
A way for local artists of Birtle to showcase their beautiful gardens and artwork. A way to promote and celebrate local artists and their hard work. A way to learn, practice, and share the love of art to others.

Local Artists: Val Thomson, Lucinda Doran, Heather Martens Rempel, Riel Benn, Mary Lowe, and Dar Strong.



## *Val's Garden*

Val first started her garden in 1984. This stunning 12 acre homestead garden has been featured on many cover magazines including Gardening Life, Gardens West, Manitoba Gardener, as well as Prairie Garden Annual. Val includes Perennial Borders, Labyrinth, Roes Garden, Dogwood Border, Goldfish Pong, White Garden, Piet Oudolf Garden, Japanese Garden, Circle Garden, Potager Garden, Mediterranean Garden, Herb Garden, Peony Garden, Grand Allee, Rock Garden, Shade Garden, View Point, Orchards, as well as a Wildflower Garden.



## *Country Market*

204-842-3660 Email: [info@birtlearts.ca](mailto:info@birtlearts.ca) 671 Main Street

Select Wednesdays of the summer, come and enjoy a blend of Farmer, Artisan, and Flea market on Main Street in Birtle. Enjoy homemade gifts, homemade cooking, baking, and canned goods, fresh garden produce, and more. Come and enjoy a cold drink as well as a famous, locally owned BBQ Austidog!

For more information, please visit: [www.birtlearts.ca](http://www.birtlearts.ca)



2. **944 Main St.** - This Eaton's Catalogue style home is identical to the packaged homes sold by Eaton's Catalogues, who sent out the whole kit, including nails for \$900 to \$1100.

3. **Walk east to Main St. & 10<sup>th</sup> St.** - Cenotaph.

4. **10<sup>th</sup> St. & Pearl St.** - Arrow Grist Mill storyboard. Look for a Main St. banner depicting it as it was.

5. **907 St. Clare St.** - This Queen Anne Victorian style home built in 1904 is the only remaining Birtle home built from cement blocks manufactured right here in Birtle. The beauty of the stained glass, unique woodwork and winding staircase remain as does the serenity that invites you to sit on the wrap around verandah. In the blocks you can see fossils of shells from the Birtle Riverbank sands that were used to form the clinker blocks.

6. **9<sup>th</sup> St. & St. Clare - Birtle's first home storyboard.** While here, look up the hill to the north. A large red brick building marks the skyline at the crest of the hill.

7. This brick structure was erected in 1931-32. Registration in this residential school was 142 - near capacity. Grades 1-8 pupils were mainly of Sioux, Cree, and Ojibway descent. Farm instruction was an integral part of school. With a motto "Learn by doing," they had enough meat and vegetables for students and staff. The flower garden was the pride and joy of the whole town. With changes in government policy came integration. By 1972, this once handsome structure stood empty and desolate.



8. **737 St. Clare Street** - This grand stone house was built in 1898 by Charles Dunham for Mr. J.M. Stewart. This home has been a landmark through the years and is still in wonderful condition.

9. **The Spring and Walker Park** - Beyond the white arches in the picket fence of this little park, you will find a storyboard for "The Spring." It was a source of drinking water from Birtle's earliest years until only a few years ago. The spring is located at the base of a flight of beautiful stone steps. Careful! Also in the park is a replica of a Red River Cart. This cart was built by Laurie Davison and has no metal parts. The originals would have leather wrapped around the wheels to support and protect them.

10. **691 St. Clare Street** - This craftsman style house has front and back porches built as essential parts of the structure. Rather than ornamental the cabinetry was simple and utilitarian.

11. **156 7th St.** - At this location, the renowned photographer A.J. Lawrence had his studio. The house now on this site was built inside the studio which was then pulled down. The museum collection includes hundreds of his photographs.

12. **Clare St. and Centre St.** - Birtle's first Post Office storyboard. (View from Centre Street) Walk north to Centre St. Bridge to find 2 storyboards

13. **The Saw Mill storyboard**

14. **The First Grist Mill storyboard.**

15. **240 Centre St.** - Known as the Edward's house, this turn of the century Queen Anne Victorian style home was built by Tom and John Patterson at the head of the old ravine road which is still visible to the West. A peony by the front path was there when the Edwards moved in, in 1943.

Once again, glance up the hill to the north. You will see a white house or what is left of "The Castle."

16. Built in 1881 for E.P. Leacock, docked as "The Castle," it was built to be a suitable home for a member of the provincial legislature. Unfortunately Mr. Leacock lost the election. The first tenant of the home was J. S. Crawford, Birtle's first mayor. Part of the home including the tower has been torn down.



17. **431 Kent St.** This house with its sweeping roofline enjoys a Birdtail River view. It was built by Mr. Henderson who

wanted a spacious open floor plan. It hosted many bridge and poker games. Music from the hoe-downs and soirees often drifted across the river.

18. **401 Kent St.** - This well kept stone house was also built by Charles Dunham in 1896. In 1909 John and Margaret Hatch settled in. Mrs. Hatch loved young children. They had eight children. Margaret assisted Dr. Head with 76 births - mostly in her home, thus the name "The Hatchery."

Walk south on 4<sup>th</sup> St. towards the highway

19. On the east side of 4<sup>th</sup> St. you will find a small hiking sign marking entrance to the river walkway. A short walk down the walkway slope and to the right you will find the lime kilns and storyboard. The building boom of the 1880's brought a high need for lime. Limestone rock was placed in the upper part of the kiln. A wood fire built in the lower part of the kiln produced heat over 1000 F which then caused the rock to break up leaving the whitish gray lime. This product was used in plaster for interior wall finishing and mortar for stone foundations of buildings.

Walk back up to the street. Follow the map or take a detour and travel the river walkway through Riverside Park and back to the corner of Centre St. and Main St.

*While in Birtle, have fun participating in the many activities available.*

*Explore Riverside Park and enjoy the scenery of our valley. Stop at the Birtle Information building and pick up a "Things to Do" pamphlet and more.*

- Take a relaxing break in the rest areas where you can enjoy the gardens and visit with friends.

- Have a round of golf at the beautiful Riverside Golf Course located near the entrance to the park or try out the tennis courts. Register at the Licensed Golf Club Restaurant.

- Hot day? Pick up an ice cream treat and head for the beach. Take a dip in the chlorinated man made swimming area.

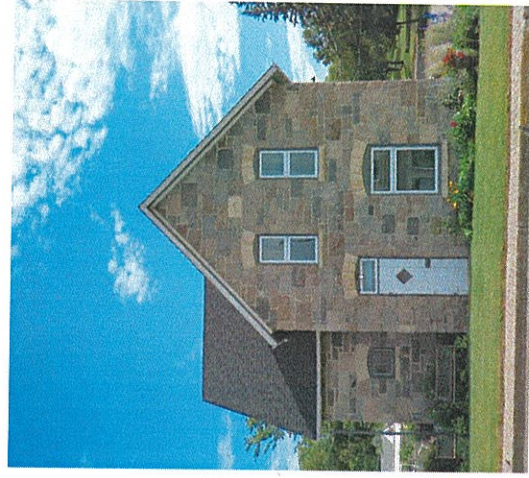


22. For many years the bell could be seen rising above the other buildings in the tower of the Town Hall which was located on this corner. The bell was mounted in the Memory Garden as a Birtle in Bloom Project in 2000.

*This brochure is a Birtle in Bloom project. Special thanks to the Prairie View Municipality for printing.*

## Self-Guided Heritage Walking Tour of Birtle

*Take a relaxing stroll through the town of Birtle and you will discover some finely crafted buildings and historic sites that tell the story of our past. This journey will take you through town, along the river walkway and back to where you started. A short drive will take you to additional sites noted on the map.*



1. **902 Main Street** - This beautifully built solid stone house was built for John Shepherd by stone mason, Charles Dunham in 1895. Substantial houses like this which use mass and solidity showed the confidence builders had in the future of the West.



## 21. United Church - storyboard

*The Anglican Church can be seen to the west. Make a short detour to read their storyboard.*

west of the Birtle and District CDC building (684 Main

St.). The stone is part of Birtle's History and serves as a bridge over the dry stream bed.



**building** was built in 1886 by

Manwaring & Wright. It was a hardware store until sold to Mr. Stubbs (lawyer). Many lawyers have practiced out of this Birtle law office - John W. Pratt, QC Geoffrey Fulton, M.D. Butcher and associates, and Sims and Co. to name a few. At one time hospital operated out of the second floor also had his dentistry office on

**storyboard.** The bell was given to the Town of

Birtle by J.S. Crawford when he became the first mayor of Birtle. The town was incorporated in 1884.

Continue east on Main St. to the museum.

Continue east on Main St. to the museum.

the Union Bank, is a treasure house rich in Birle's

History. Wander back in time through the carefully prepared rooms viewing thousands of generously donated bits and pieces of our forefathers. Be sure to have a look at the Mill Stone found outside the museum.

*We hope your have enjoyed your heritage walking*

*We hope you have enjoyed your heritage walking tour of Birle. Below are additional sites you may want to see but may want to drive to. They are*

marked on the map. Some have storyboards.

29. The Info Centre was a building on the move. The Ban-

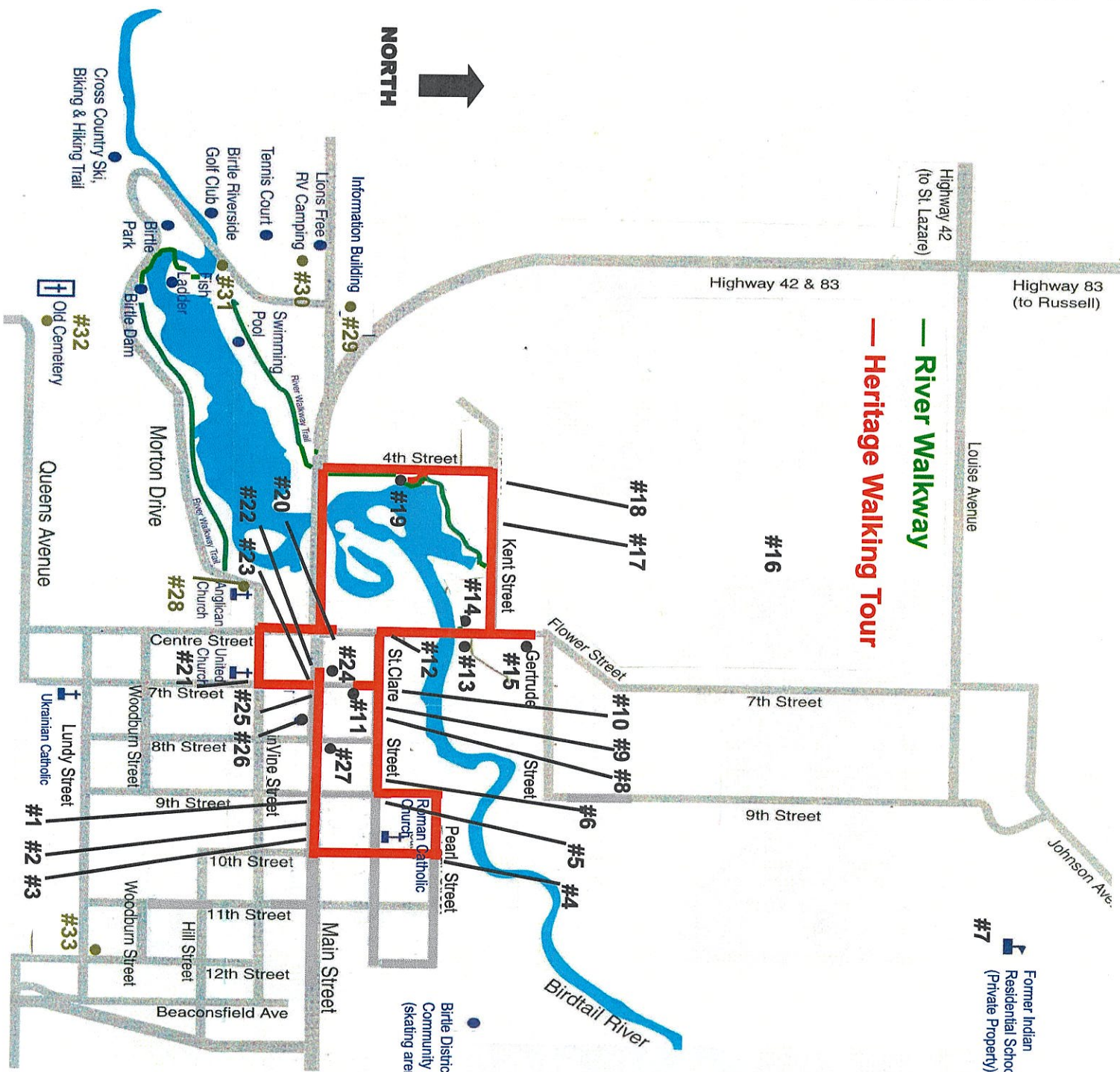
tist Church moved to Birtle from Newdale with horses in 1895 and was open until 1971. It was moved to its present location in the mid 1990's to be used as the Tourist Information Centre. It does not have a storyboard but its history is documented inside the building.

inside the gate of Birtle Riverside Park.

32. The old cemetery was established in 1884 and closed

in 1897 when a new cemetery was created at the present site East of town. - **storyboard**

### 34. The Birle Cemetery





# Birdtail Cross Country Ski Trail

## BIRTLE

Park Starting Point

Howard Access Point  
Flat Beginner Loop

Warmup Cabin

Billaney / Samchuk Access

Wady / Boyko AccessPoint

### Legend

- Katimavik Loop 5 Km
- Big Rock Loop 1.5 Km
- Valley View Loop 2.5 Km
- Wady Loop 5.5 Km
- Provincial Highways
- Municipal Roads

Ski Trail is not patrolled. USE REGULAR  
OUTDOOR SAFETY PRECAUTIONS.

0.5 Miles



**Birdtail Cross Country  
Ski Trail  
Big Rock and  
Valleyview Loops**



**Legend**

- Big Rock Loop 1.5 Km
- Valley View Loop 2.5 Km
- Katimavik Loop 5 Km
- Wady Loop 5.5 Km
- Provincial Highways
- Municipal Roads

0 200 400 Meters

Map Scale 1:6,500

Ski Trail is not patrolled. USE REGULAR  
OUTDOOR SAFETY PRECAUTIONS.



# Birdtail Cross Country Ski Trail

## BIRTLE

Park Starting Point

Howard Access Point  
Flat Beginner Loop

Warmup Cabin

Billaney / Samchuk Access

Wady / Boyko AccessPoint

### Legend

- Katimavik Loop 5 Km
- Big Rock Loop 1.5 Km
- Valley View Loop 2.5 Km
- Wady Loop 5.5 Km
- Provincial Highways
- Municipal Roads

Map Scale 1:21,000

Ski Trail is not patrolled. USE REGULAR  
OUTDOOR SAFETY PRECAUTIONS.

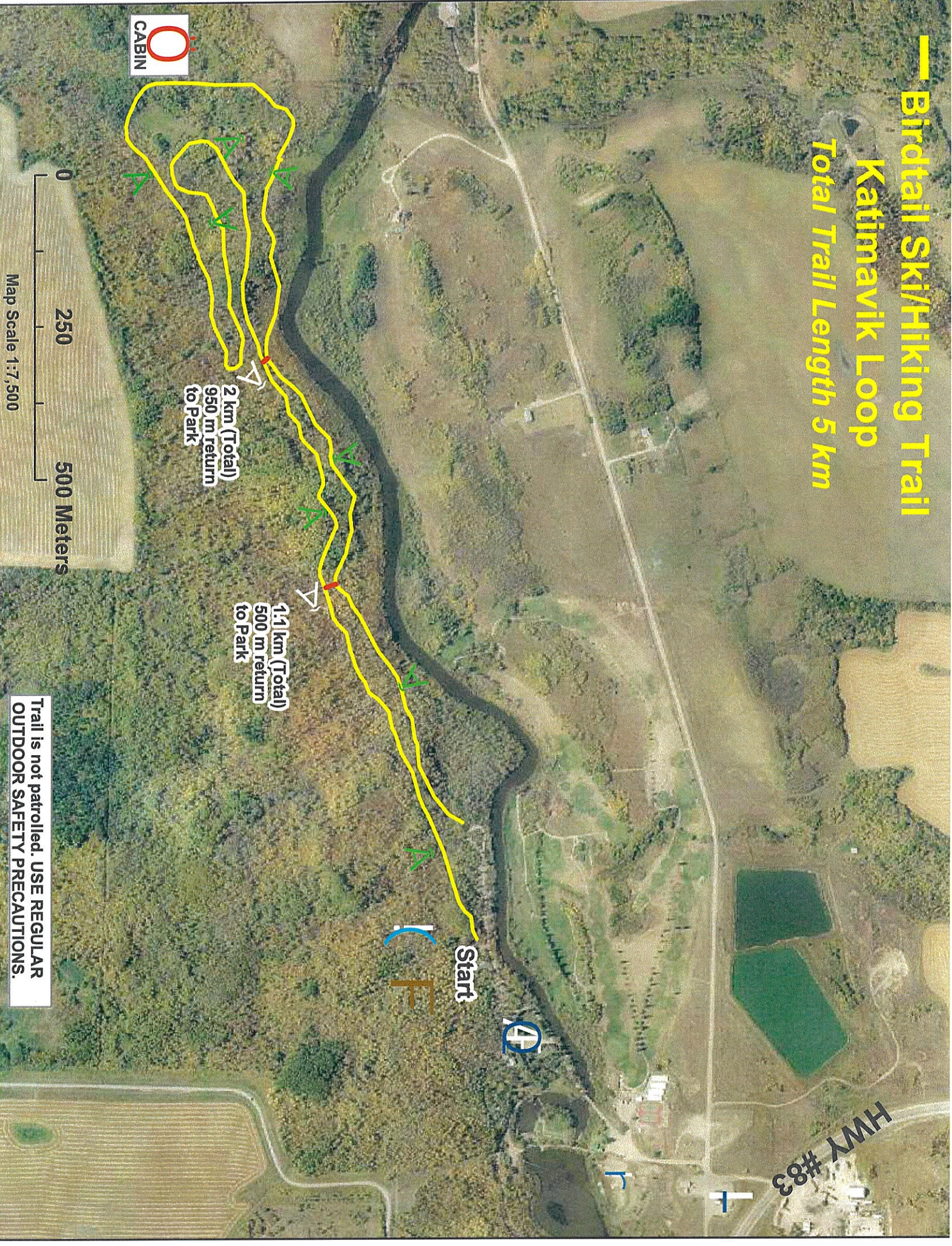
0 0.5 1 Miles



# Birdtail Ski/Hiking Trail

## Katimavik Loop

Total Trail Length 5 km



HWY #83



1:31



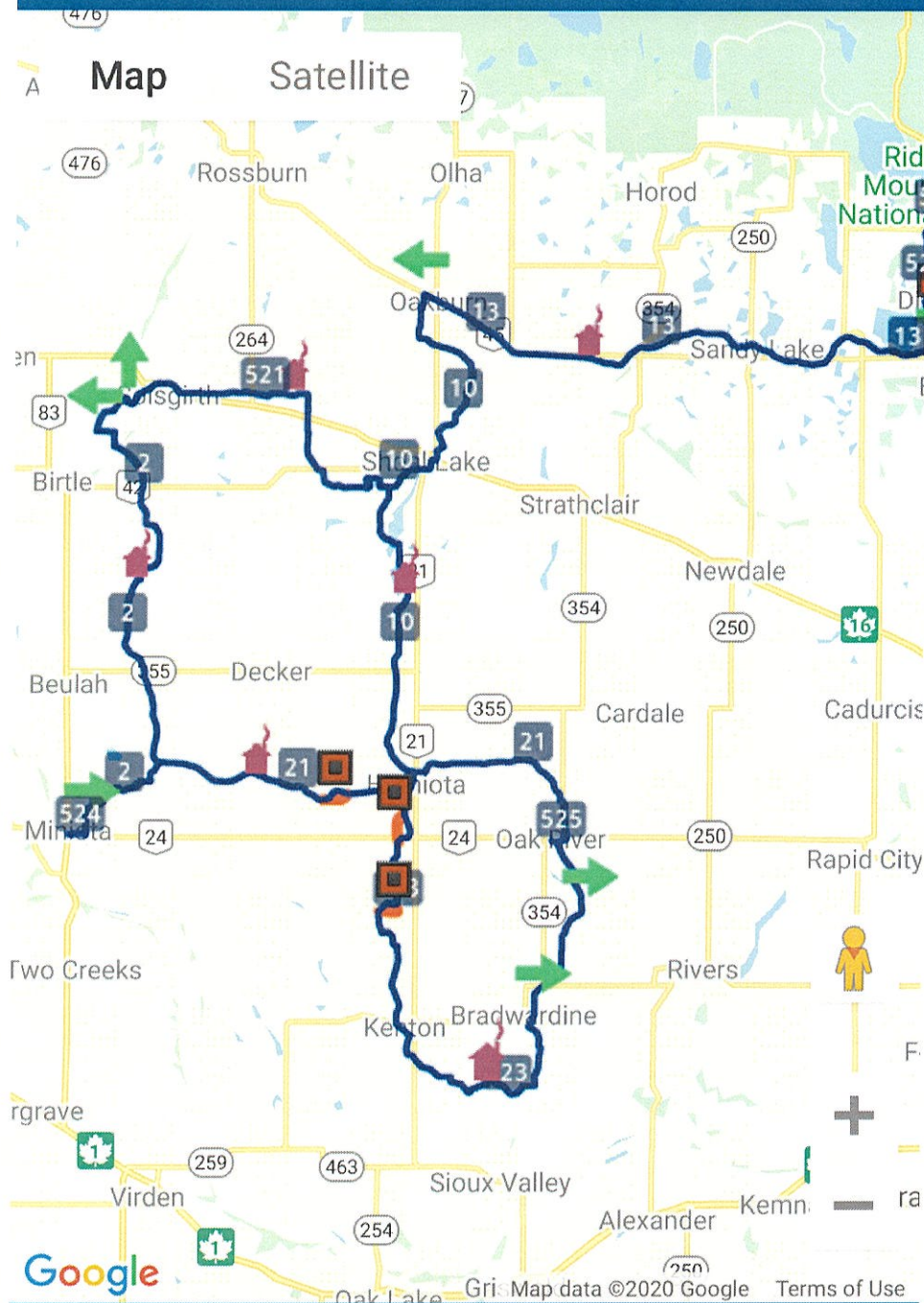
AA

🔒 snoman.mb.ca



## Thunder & Ice Snowmobile Club

NEW: [Click here](#) to see our new trail status conditions page.



Snoman Inc. does not warrant or make any representations or claims as to the validity,





1:30



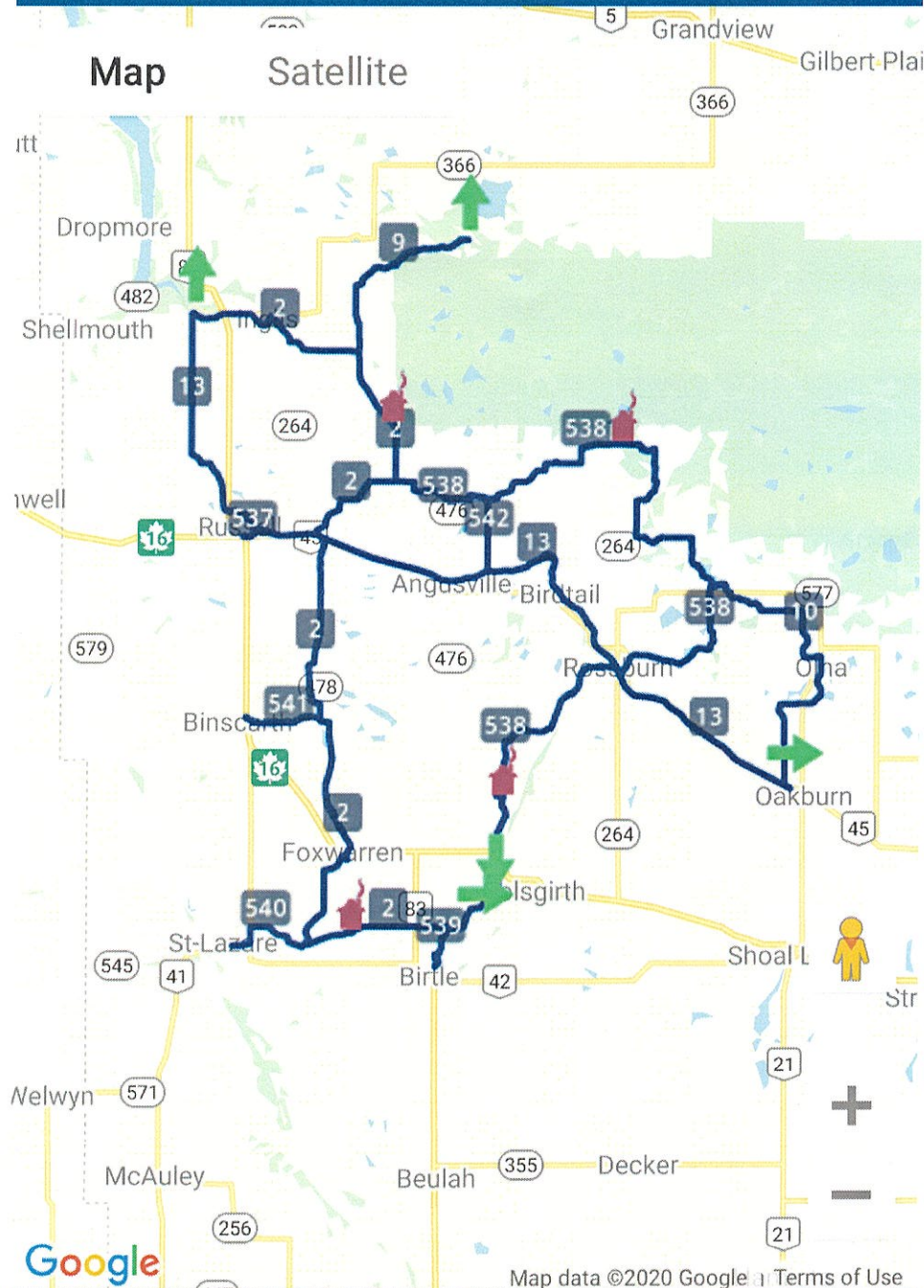
AA

snoman.mb.ca



## Snowtraxx Snowmobile Club Inc.

NEW: [Click here](#) to see our new trail status conditions page.



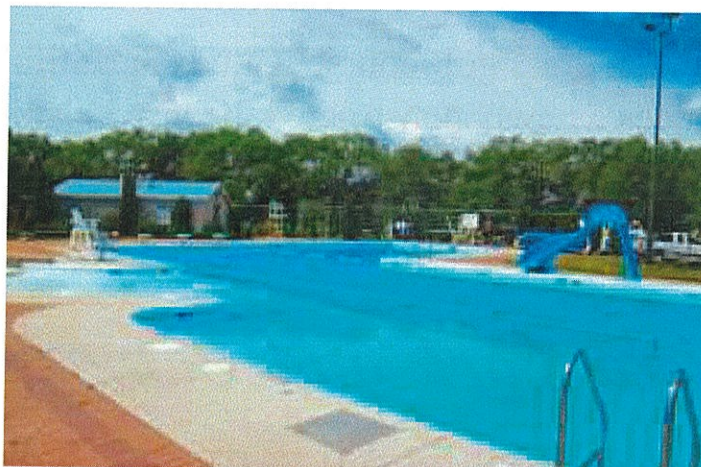
Snoman Inc. does not warrant or make any representations or claims as to the validity,





# *Hamiota Aquatic Centre*

204-764-3057



Come cool off and enjoy Hamiota's Aquatic Centre which includes a heated pool with 25 meter lanes, a one meter diving board, as well as two waterslides. Offering Red Cross swimming lessons, instructor and lifeguard courses, aqua fit, lap swim, and public swim times.

## Public swimming fees as of 2020

	<b>Family</b>	<b>Individual</b>
<b>Seasonal</b>	\$200	\$90
<b>Month</b>	\$150	\$70
<b>One Week</b>	\$100	\$70
<b>Day Pass</b>	\$20	\$8
<b>3 Day Pass</b>	\$50	\$20
<b>Aqua Fit</b>	----	\$5
<b>Single Swim</b>	----	\$5
<b>Preschool Age</b>	Free	Free



# *Hamiota Golf Course*

204-764-2341

This 9 hole green grass golf course features beautiful greens and fairways. Includes a newly constructed, licensed clubhouse. Season memberships are available for purchase. Tournaments for men, ladies, seniors, as well as mixed are held throughout the season.

## *Hamiota Park and Campground*

In season: 204-764-3057

Off season: 204-764-3050 ext. 106

Hamiota park and campground is located adjacent from the aquatic centre. Located in the park includes the aquatic centre, Lion's playground, golf course, agricultural building, Sports Complex, beach volleyball court, soccer field, ball diamonds, and equestrian arena.

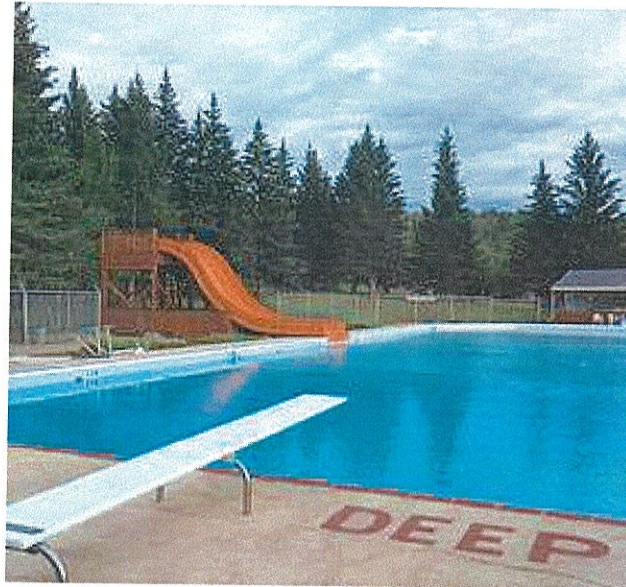
Campground offers 45 Full Service sites with water, hydro, and sewer hookup. 55 sites are equipped with firepits, picnic tables, and 30amp service. Firewood included in price.





# Binscarth Pool

(204) 532-2353



## Camping

Rates as of 2021

	<i>Daily</i>	<i>Weekly</i>	<i>Seasonal</i>
Unserviced	\$15	\$90	-----
15 amp	\$30	\$180	\$840
30 amp	\$35	\$210	\$980
50 amp	\$45	\$270	\$1260

## Swimming

Rates as of 2021

	<i>Daily</i>	<i>Weekly</i>	<i>Seasonal</i>
Preschool	Free with paid adult		
Student	\$5.50	\$33	\$90
Adult	\$6.50	\$39	\$105
Family		\$145	\$225

Book of 10 swims (adult or youth) \$55









# CONNIE'S PIZZA

FRESH DOUGH DAILY

204-842-3661

49 BEACONSFIELD AVE BIRTLE, MANITOBA

1 BLOCK WEST OF CO-OP AGRO HIGHWAY #83 SOUTH

TAKE OUT ONLY:

TERMS OF PAYMENT

**CASH ONLY**

3 ATMS ON MAIN STREET BIRTLE, MAN.

BUSINESS HOURS: **THURSDAY THRU SUNDAY**

**11 AM – 9 PM**

PLEASE USE MENU ON REVERSE TO ORDER

MENU PRICES ARE SUBJECT TO APPLICABLE TAXES

THANK YOU FOR YOUR PATRONAGE

Menu....over



# CONNIE'S PIZZA MENU

FRESH DOUGH DAILY

204-842-3661

49 BEACONSFIELD AVE BIRTLE, MAN. ONE BLOCK WEST OF HWY NO. 83 SOUTH

## PIZZA SPECIALS

	9"	12"	15"
1. <b>House:</b> Ham, pepperoni, salami, bacon, mushroom, onion, pineapple	14.95	18.95	22.95
2. <b>Full house:</b> Ham, pepperoni, salami, bacon, mushroom, green pepper, black olives, onion	15.95	19.95	23.95
3. <b>Hawaiian:</b> Ham, pineapple, mushroom, green pepper	11.95	15.95	19.95
4. <b>Mediterranean:</b> Bacon, shrimp, black olives, tomato, onion, green pepper	14.95	18.95	22.95
5. <b>Mexican:</b> Taco beef, black olives, tomato, onion, salsa, jalapeno pepper, cheddar	13.95	17.95	21.95
6. <b>Vegetarian:</b> Broccoli, cauliflower, mushroom, onion, green pepper, cheddar	12.95	16.95	20.95
7. <b>JP's Greek:</b> Feta cheese, Kalamata olives, red onion, green pepper, pineapple	12.95	16.95	20.95
8. <b>Meat and Cheese Lovers:</b> Ham, pepperoni, salami, bacon, cheddar, mozza, Monterey jack	15.95	19.95	23.95
9. <b>Three Cheese:</b> Cheddar, mozza, Monterey jack and two toppings of your choice	12.95	16.95	20.95
10. <b>Taco Cheese Burger:</b> Taco beef, bacon, tomato, onion, hamburger sliced dills, cheddar	12.95	16.95	20.95
11. <b>One Topping Pizza</b>	8.95	11.95	14.95
<b>Extra Cheese</b>	2.00	2.50	3.00
<b>Extra Toppings</b>	2.00	2.50	3.00

## TOPPINGS

### CREATE YOUR OWN PIZZA

Canned pop \$1.50 tax included

<b>Ham</b>	<b>Mushrooms</b>	<b>Jalapeno Peppers</b>
<b>Pepperoni</b>	<b>Onion</b>	<b>Broccoli</b>
<b>Salami</b>	<b>Pineapple</b>	<b>Cauliflower</b>
<b>Bacon</b>	<b>Green Peppers</b>	<b>Hamburger Sliced Dills</b>
<b>Taco Beef</b>	<b>Tomato</b>	<b>Feta Cheese</b>
<b>Shrimp</b>	<b>Black olives</b>	<b>Cheddar</b>
<b>Kalamata olives</b>	<b>Monterey jack</b>	<b>Red onion</b>

Please keep this menu to order.  
Pizza prices are subject to  
applicable taxes.  
Please see reverse for details.  
Prices subject to change.



# MARK'S CAFE

## CANADIAN & CHINESE CUISINE

737 MAIN STREET - BIRTLE, MB

**204-842-3888**

**ALL DISHES AVAILABLE MADE SPICY!**

### SHRIMP

- |                              |         |
|------------------------------|---------|
| 1. SWEET & SOUR SHRIMP       | \$12.99 |
| 2. HONEY GARLIC SHRIMP       | \$12.99 |
| 3. PAN-FRIED SHRIMP w/ONIONS | \$13.99 |
| 4. PAN-FRIED SHRIMP w/TOMATO | \$13.99 |
| 5. SHRIMP & VEGETABLES       | \$12.99 |
| 6. KUNG PAO SHRIMP (SPICY!)  | \$12.99 |

### VEGETABLES

- |   |         |
|---|---------|
| 7. MARK'S MIXED VEGETABLES<br>(with Shrimp and Chicken) | \$10.99 |
| 8. MIXED VEGETABLES                                     | \$8.99  |
| 9. CHICKEN CHOP SUEY                                    | \$8.99  |
| 10. PORK CHOP SUEY                                      | \$8.99  |
| 11. BEEF CHOP SUEY                                      | \$8.99  |
| 12. SHRIMP CHOP SUEY                                    | \$10.99 |
| 13. MUSHROOM CHOP SUEY                                  | \$8.99  |

### CHICKEN

- |  |         |
|--|---------|
| 14. CHICKEN WINGS<br>(salt & pepper, honey garlic) | \$9.99  |
| 15. SWEET & SOUR CHICKEN BALLS                     | \$9.99  |
| 16. S&S PINEAPPLE CHICKEN BALLS                    | \$10.99 |
| 17. HONEY GARLIC CHICKEN BALLS                     | \$10.99 |
| 18. LEMON CHICKEN                                  | \$10.99 |
| 19. SESAME CHICKEN                                 | \$10.99 |
| 20. HONEY GARLIC CHICKEN                           | \$10.99 |
| 21. PINEAPPLE SLICED CHICKEN                       | \$10.99 |
| 22. MUSHROOM CHICKEN                               | \$9.99  |
| 23. CHICKEN & MIXED VEGETABLES                     | \$10.99 |
| 24. CURRY CHICKEN                                  | \$10.99 |
| 25. KUNG PAO CHICKEN (SPICY!)                      | \$10.99 |

### CHOW MEIN (LONG EGG NOODLES)

- |                                |         |
|--------------------------------|---------|
| 26. MARK'S CANTONESE CHOW MEIN | \$11.99 |
| 27. CHICKEN CHOW MEIN          | \$8.99  |
| 28. PORK CHOW MEIN             | \$8.99  |
| 29. BEEF CHOW MEIN             | \$8.99  |
| 30. SHRIMP CHOW MEIN           | \$10.99 |
| 31. MUSHROOM CHOW MEIN         | \$8.99  |

### PORK & BEEF

- |   |         |
|---|---------|
| 32. SWEET & SOUR BREADED PORK               | \$9.99  |
| 33. BREADED PORK (S&S or honey garlic)      | \$10.99 |
| 34. BREADED SPARE RIBS(S&S or honey garlic) | \$10.99 |
| 35. DEEP-FRIED PORK WONTONS w/S&S           | \$7.99  |
| 36. STIR-FRIED BEEF & BROCCOLI              | \$12.99 |
| 37. STIR-FRIED BEEF & TOMATO                | \$12.99 |
| 38. CRISPY GINGER BEEF                      | \$10.99 |
| 39. CANTONESE SWEET & SOUR PORK             | \$10.99 |

### FRIED RICE

- |                               |         |
|-------------------------------|---------|
| 40. MARK'S SPECIAL FRIED RICE | \$9.99  |
| 41. CHICKEN FRIED RICE        | \$8.99  |
| 42. PORK FRIED RICE           | \$8.99  |
| 43. BEEF FRIED RICE           | \$8.99  |
| 44. SHRIMP FRIED RICE         | \$10.99 |
| 45. MUSHROOM FRIED RICE       | \$8.99  |
| 46. VEGETABLE FRIED RICE      | \$8.99  |

### EGG FOO YUNG

- |                           |         |
|---------------------------|---------|
| 47. MARK'S EGG FOO YUNG   | \$10.99 |
| 48. CHICKEN EGG FOO YUNG  | \$8.99  |
| 49. PORK EGG FOO YUNG     | \$8.99  |
| 50. BEEF EGG FOO YUNG     | \$8.99  |
| 51. SHRIMP EGG FOO YUNG   | \$10.99 |
| 52. MUSHROOM EGG FOO YUNG | \$8.99  |

### SIDE DISHES

- |   |                          |
|---|--------------------------|
| EGG ROLL  | \$1.99                   |
| STEAMED RICE  | (sm.) \$1.9 (lg.) \$4.99 |
| CONSOMME SOUP   | \$2.99                   |
| ASIAN NOODLE SOUP (chicken or shrimp)   | \$5.99                   |
| WONTON SOUP   | \$5.99                   |
| DELUXE WONTON SOUP  | \$8.99                   |
| (Jumbo stuffed wontons with noodles, vegetables, chicken & shrimp)                    |                          |
| APPETIZER PLATTER   | \$14.99                  |
| (An assortment of chicken balls, breaded pork, breaded shrimp and deep-fried wontons) |                          |

Tuesday - Sunday 9am - 8pm



# MARK'S CAFE

## CANADIAN & CHINESE CUISINE

737 MAIN STREET - BIRTLE, MB

**204-842-3888**

### DINNER FOR 2

2 EGG ROLLS  
S & S CHICKEN BALLS  
MIXED VEGETABLES  
BEEF CHOW MEIN...\$31.00

### DINNER FOR 3

3 EGG ROLLS  
S & S CHICKEN BALLS  
MIXED VEGETABLES  
CHICKEN FRIED RICE  
BREADED PORK.....\$44.00

### DINNER FOR 4

4 EGG ROLLS  
S & S CHICKEN BALLS  
MIXED VEGETABLES  
CANTONESE CHOW MEIN  
MARK'S SPECIAL FRIED RICE  
S & S BREADED SHRIMP.....\$55.00

### COMBINATION PLATES

- A SWEET & SOUR BREADED PORK  
SWEET & SOUR CHICKEN BALLS  
MIXED VEGETABLES  
FRIED RICE  
BREADED SHRIMP.....\$10.99
- B SWEET & SOUR BREADED PORK  
SWEET & SOUR CHICKEN BALLS  
MIXED VEGETABLES  
FRIED RICE.....\$9.99
- C SWEET & SOUR BREADED PORK  
SWEET & SOUR CHICKEN BALLS  
FRIED RICE.....\$8.99
- D EGG ROLL  
SWEET & SOUR BREADED PORK  
SWEET & SOUR CHICKEN BALLS  
MIXED VEGETABLES  
FRIED RICE  
BREADED SHRIMP.....\$11.99

### BURGERS

HAMBURGER with lettuce, tomato, relish, mustard,  
onion and ketchup \$4.99  
Add CHEESE \$5.50  
Add CHEESE and BACON \$6.50  
CHICKEN BURGER with lettuce and mayo \$4.99  
Add CHEESE \$5.50  
Add CHEESE and BACON \$6.50  
FISH AND CHIPS \$9.99

### SANDWICHES (white or brown)

DENVER (2 eggs, ham and onion) \$4.99  
BLT \$4.99  
FRIED HAM and EGG \$4.99  
GRILLED CHEESE \$3.99  
CLUBHOUSE (triple decker bacon, tomato,  
lettuce, ham, cheese and mayo) \$6.99

### ALL-DAY BREAKFAST

- A. (2) EGGS  
(3) PCS BACON, SAUSAGE or HAM  
HASHBROWNS  
TOAST (white or brown).....\$6.99
- B. FRENCH TOAST  
(3) PCS BACON, SAUSAGE or HAM.....\$5.99
- C. (3) EGG OMLETTE with your choice of  
Fillings: HAM, CHEESE, ONION, BACON,  
TOMATO, MUSHROOM, PEPPER  
TOAST (white or brown).....\$6.99

### SIDES

EGGS (2) \$2.99  
TOAST \$1.99  
BACON, HAM or SAUSAGES (3) \$2.99  
HASHBROWNS \$1.99  
TOAST (white, brown or rye) \$1.99  
SOUP OF THE DAY \$2.99  
ONION RINGS \$3.99  
FRENCH FRIES \$2.99  
GRAVY \$1.00  
CHICKEN FINGERS (3) \$4.99

ALL PRICES BEFORE TAXES



