



AACER

SPORTS FLOORING

ScissorLoc™

Aacer ScissorLoc's criss-cross, solid wood subfloor creates a dimensionally stable system with excellent natural ventilation capabilities. The option of the PowerVent™ Airflow system adds a feature which will detect moisture and start drying the system with mechanical airflow.



see us at
Sweets.com

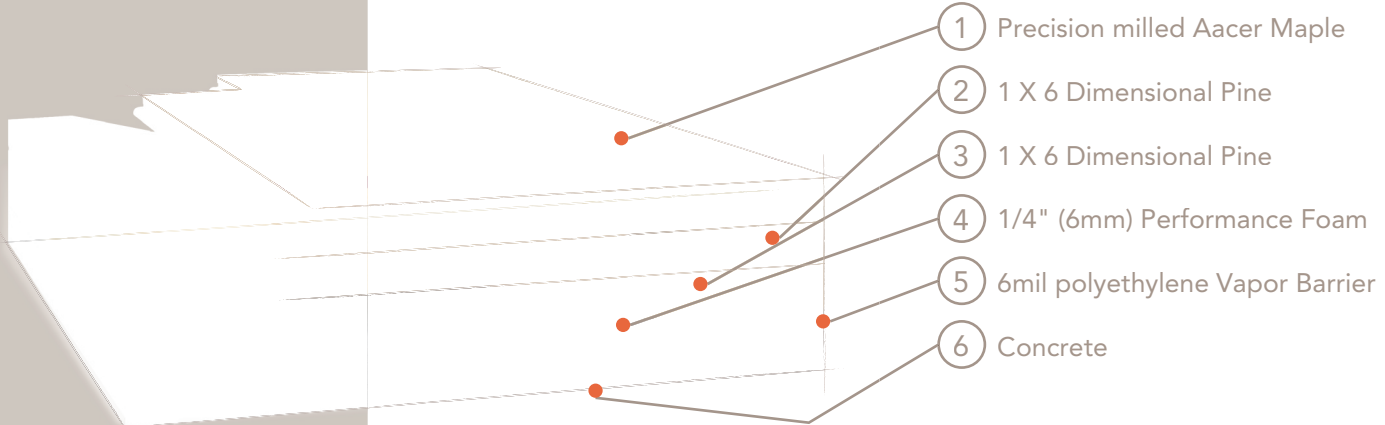


FLOATING



ScissorLoc™

Available ScissorLoc™ Floor Systems: I, II, III, DC and LP



Certified



Green Status
LEED Contributors



FSC® Certified Maple - MRc7
FSC® Certified SubFloor Components - MRc7
EQ - 4.2
Regional Materials - MRc5.1 & 5.2

Optional Versions

I, II, III, DC, LP, Powervent™

Resilience

1/4" Performance Foam
*other pad options available

Slab Depression

ScissorLoc™ I, II

25/32" (20 mm) flooring - 2 1/2" (64mm)
33/32" (26 mm) flooring - 2 3/4" (70mm)

ScissorLoc™ LP

25/32" (20 mm) flooring - 2" (51mm)
33/32" (26 mm) flooring - 2 1/4" (57mm)

ScissorLoc™ III with 3/4" TriPower™ Pad

25/32" (20 mm) flooring - 3" (76mm)
33/32" (26 mm) flooring - 3 1/4" (83mm)

ScissorLoc™ DC with 3/4" Performance Foam

25/32" (20 mm) flooring - 2 1/2" (64mm)
33/32" (26 mm) flooring - 2 3/4" (70mm)

Retrofit

System may be adjusted to fit any slab profile

Subfloor Construction

Solid Pine

System Type

Floating System

Testing Laboratory



U.S. Patent#

#5,299,401

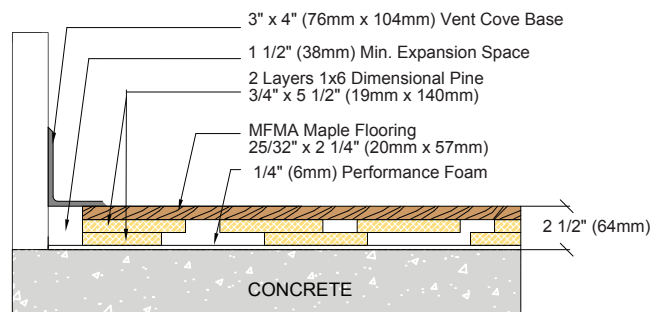
Warranty

Lifetime available

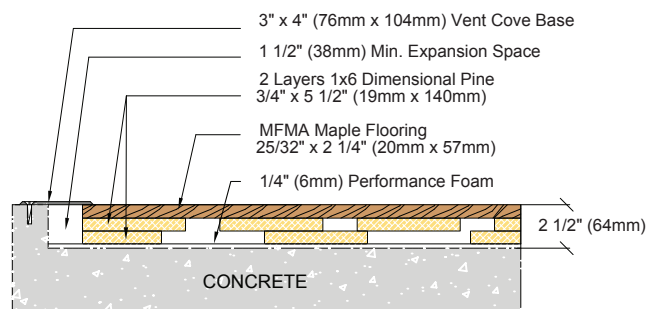
AacerFlooring.com

(877) 582-1181

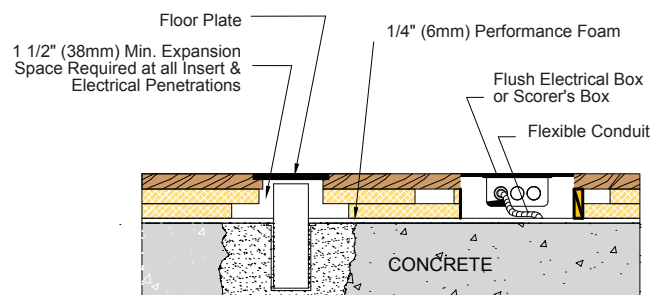
WALL BASE



THRESHOLD



EQUIPMENT



It is the policy of Aacer Flooring to continuously improve its line of products. Therefore, Aacer Flooring reserves the right to change, modify or discontinue systems, specifications and accessories of all products at any time without notice or obligation to purchaser.

October 2014