



tridel.com

# THE LAKESIDE

*collection*

BAYSIDE  
T O R O N T O | A HINES MASTER  
PLANNED COMMUNITY.



AQUABELLA

BAYSIDE TORONTO

LUXURY BY THE LAKE [www.benchmarksignaturerealty.com](http://www.benchmarksignaturerealty.com)



**Benchmark Signature Realty INC. Brokerage**

1020 Denison Street Unit 113

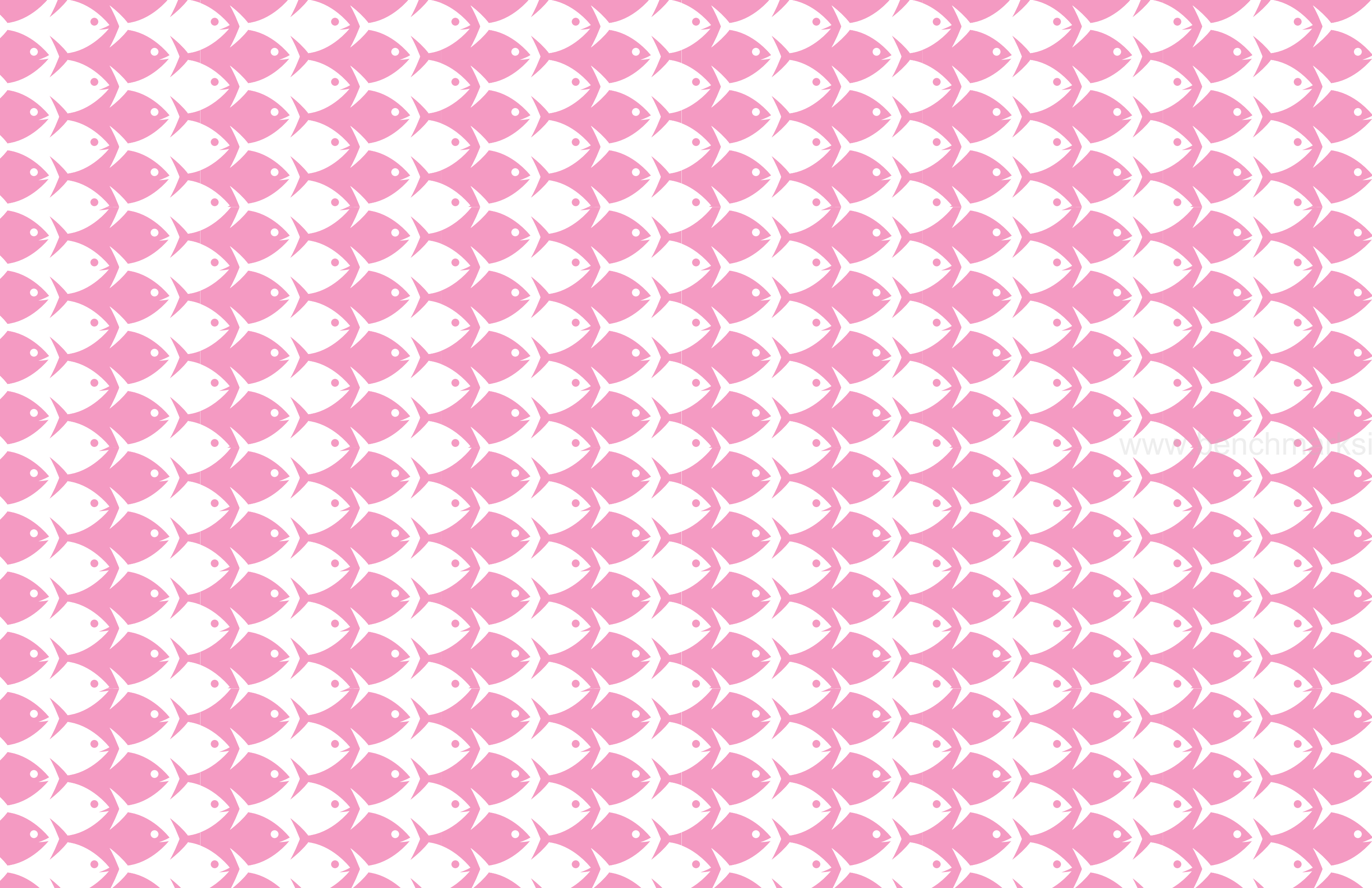
L3R 3W5 Markham Ontario

Tel 905 604 2299 Fax 905 604 0622

<http://www.benchmarksignaturerealty.com>







[www.benchmarksignaturerealty.com](http://www.benchmarksignaturerealty.com)

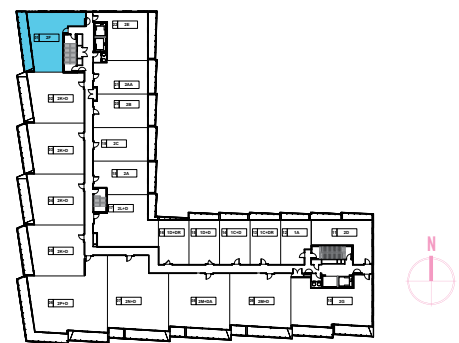
THE LAKESIDE  
*collection*





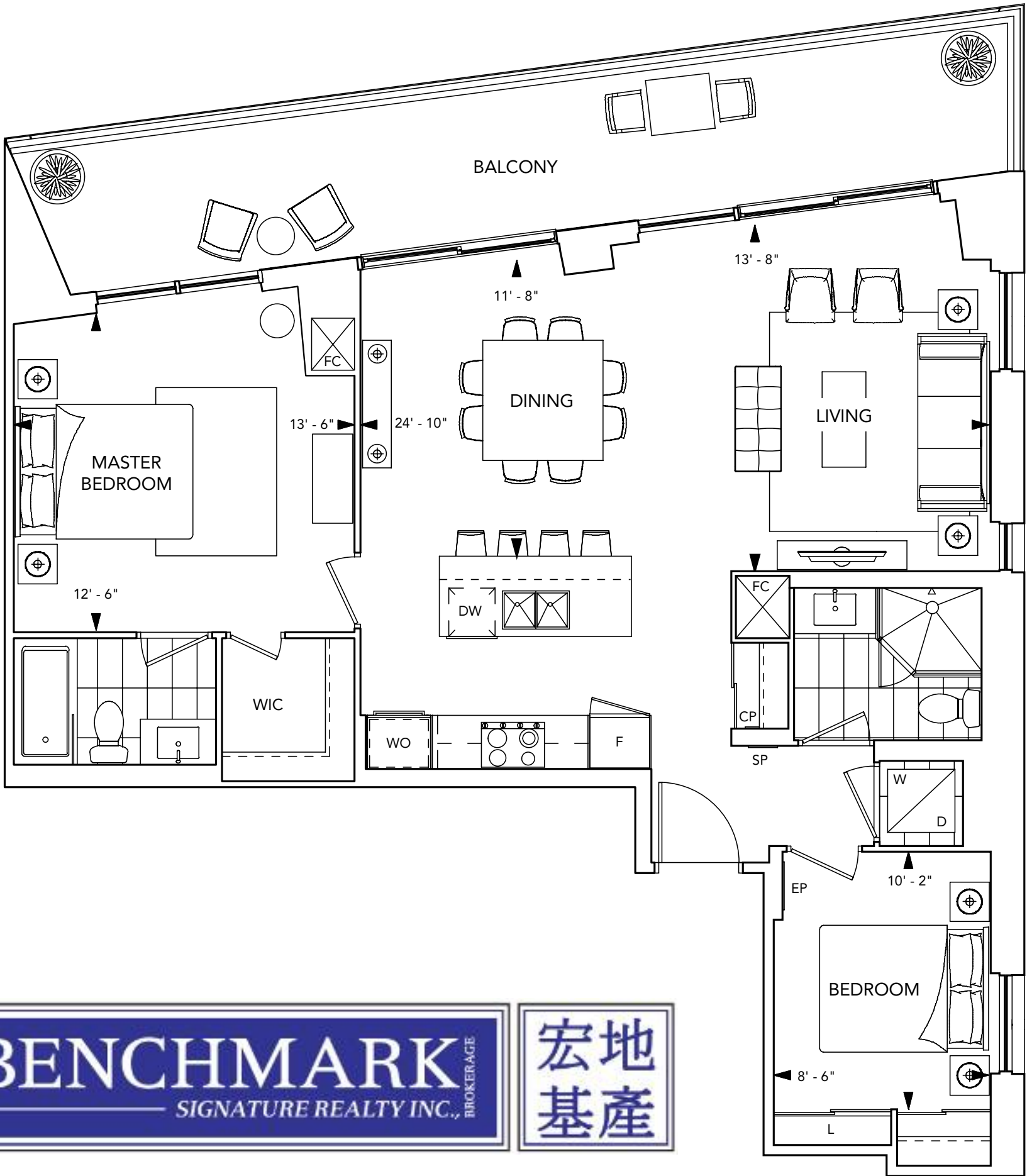
PARK VIEW

SUITE 2F  
2 BEDROOM



Floors 3-10

www.benchmarksignaturerealty.com





PARK VIEW

# SUITE 2K+D

2 BEDROOM + DEN



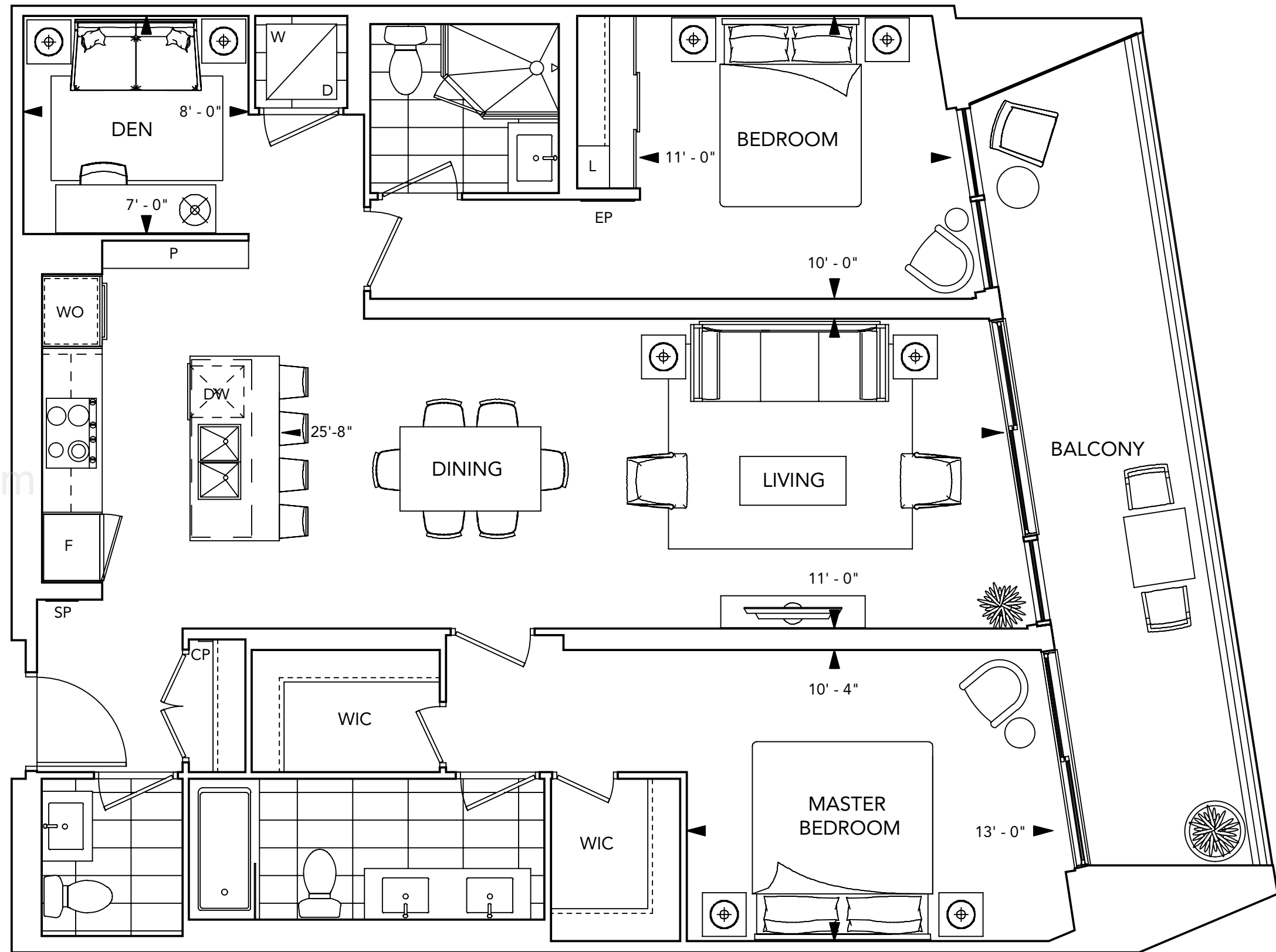
Floors 2-9



THE LAKESIDE  
collection

All dimensions are approximate and subject to normal construction variances. Dimensions may exceed the useable floor area. Sizes and specifications subject to change without notice. Furniture is displayed for illustration purposes only and does not necessarily reflect the electrical plan for the suite. Suites are sold unfurnished. Balcony and Façade Variations may apply, contact a sales representative for further details. E.&O.E. Tridel®, Tridel Built for Life® and Tridel Built Green. Built for Life® are registered trademarks of Tridel and used under license. ©Tridel 2016. All rights reserved. September 2016.

www.benchmarksignaturerealty.com



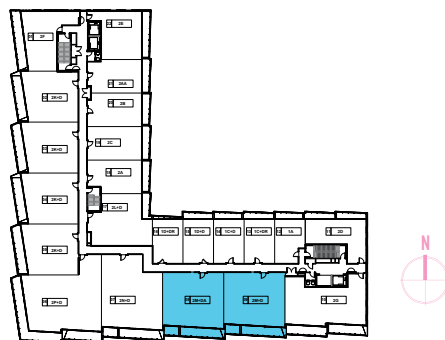




LAKE VIEW

# SUITE 2M+D

2 BEDROOM + DEN



Floors 2-7

BENCHMARK

SIGNATURE REALTY INC., BROKERAGE

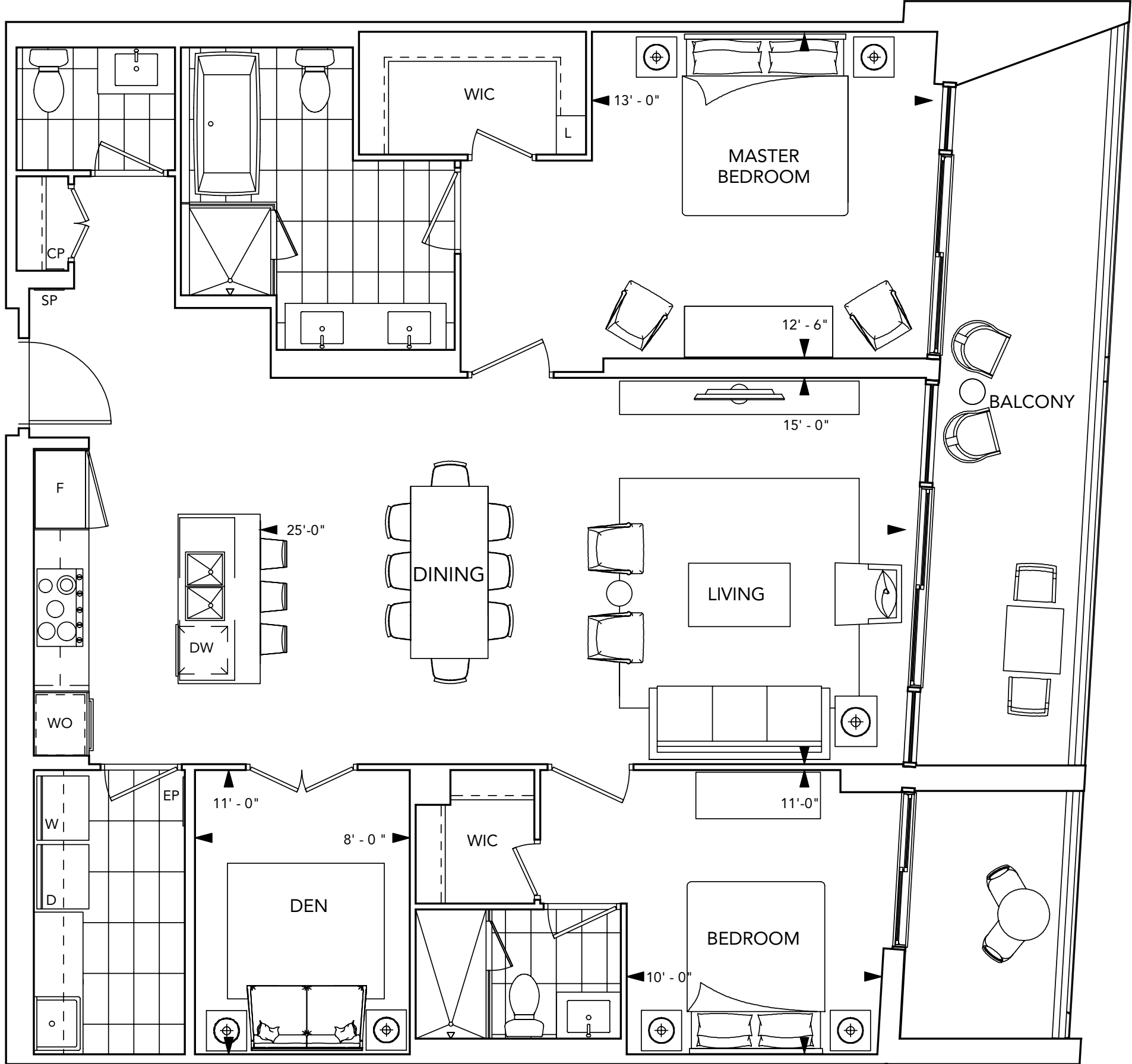
宏地

基產

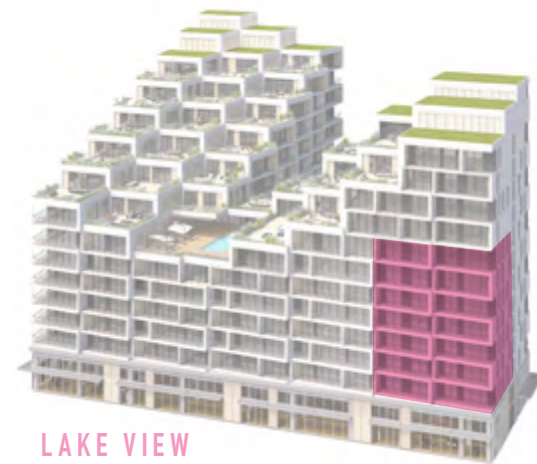
THE LAKESIDE  
collection

All dimensions are approximate and subject to normal construction variances. Dimensions may exceed the useable floor area. Sizes and specifications subject to change without notice. Furniture is displayed for illustration purposes only and does not necessarily reflect the electrical plan for the suite. Suites are sold unfurnished. Balcony and Faade Variations may apply, contact a sales representative for further details. E.&O.E. Tridel®, Tridel Built for Life® and Tridel Built Green. Built for Life® are registered trademarks of Tridel and used under license. ©Tridel 2016. All rights reserved. September 2016.

www.benchmarksignaturerealty.com



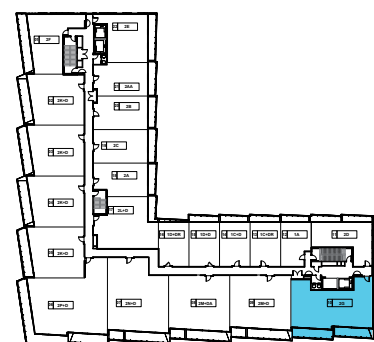




LAKE VIEW

# SUITE 2G

2 BEDROOM

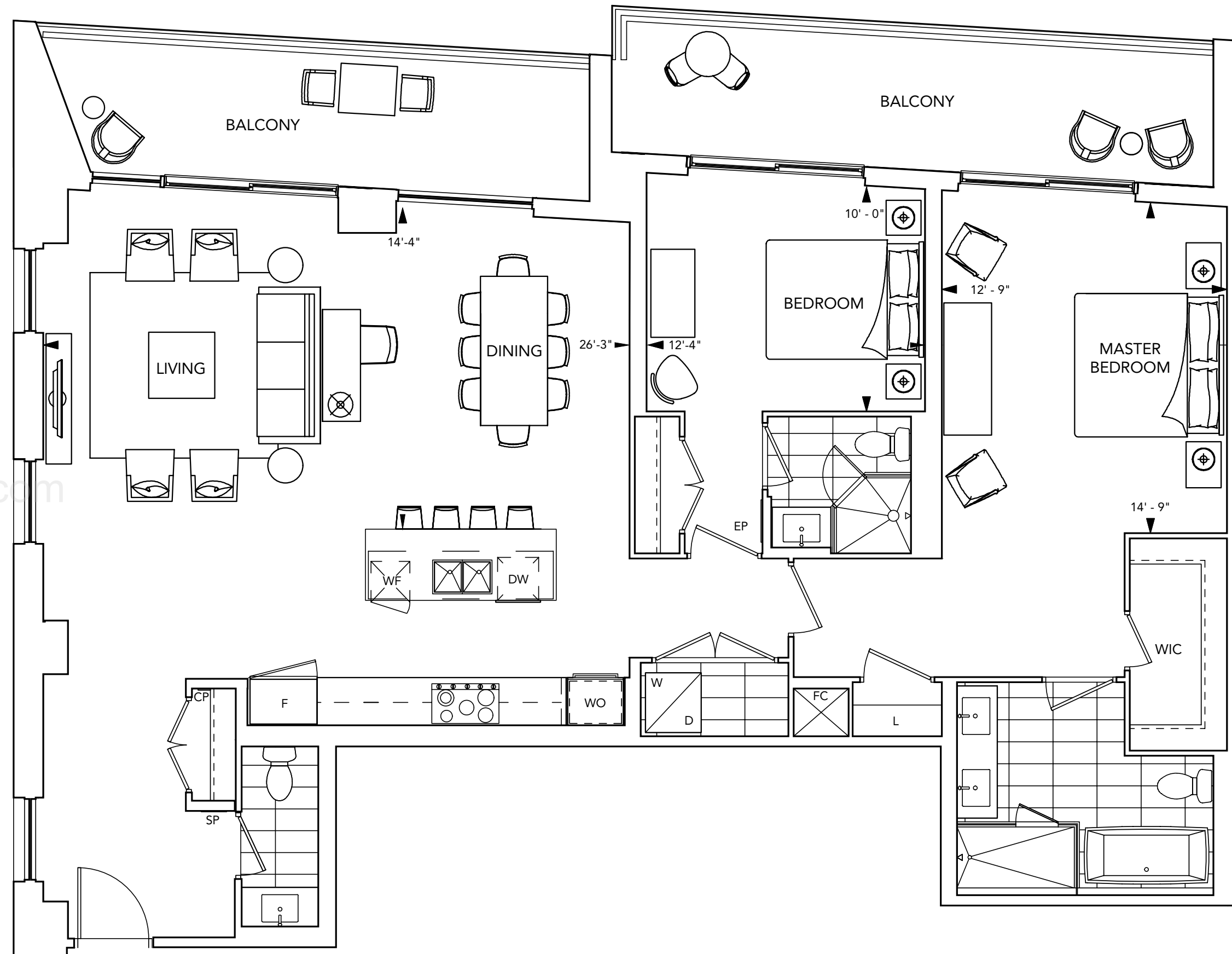


Floors 2-8



THE LAKESIDE  
collection

All dimensions are approximate and subject to normal construction variances. Dimensions may exceed the useable floor area. Sizes and specifications subject to change without notice. Furniture is displayed for illustration purposes only and does not necessarily reflect the electrical plan for the suite. Suites are sold unfurnished. Balcony and Faade Variations may apply, contact a sales representative for further details. E.&O.E. Tridel®, Tridel Built for Life® and Tridel Built Green. Built for Life® are registered trademarks of Tridel and used under license. ©Tridel 2016. All rights reserved. September 2016.





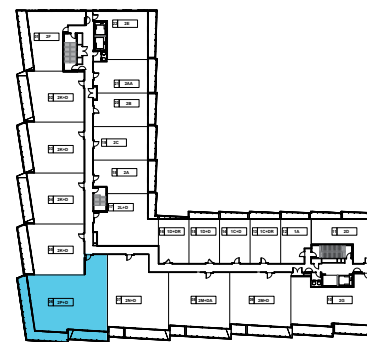


PARK VIEW

LAKE VIEW

## SUITE 2P+D

2 BEDROOM + DEN



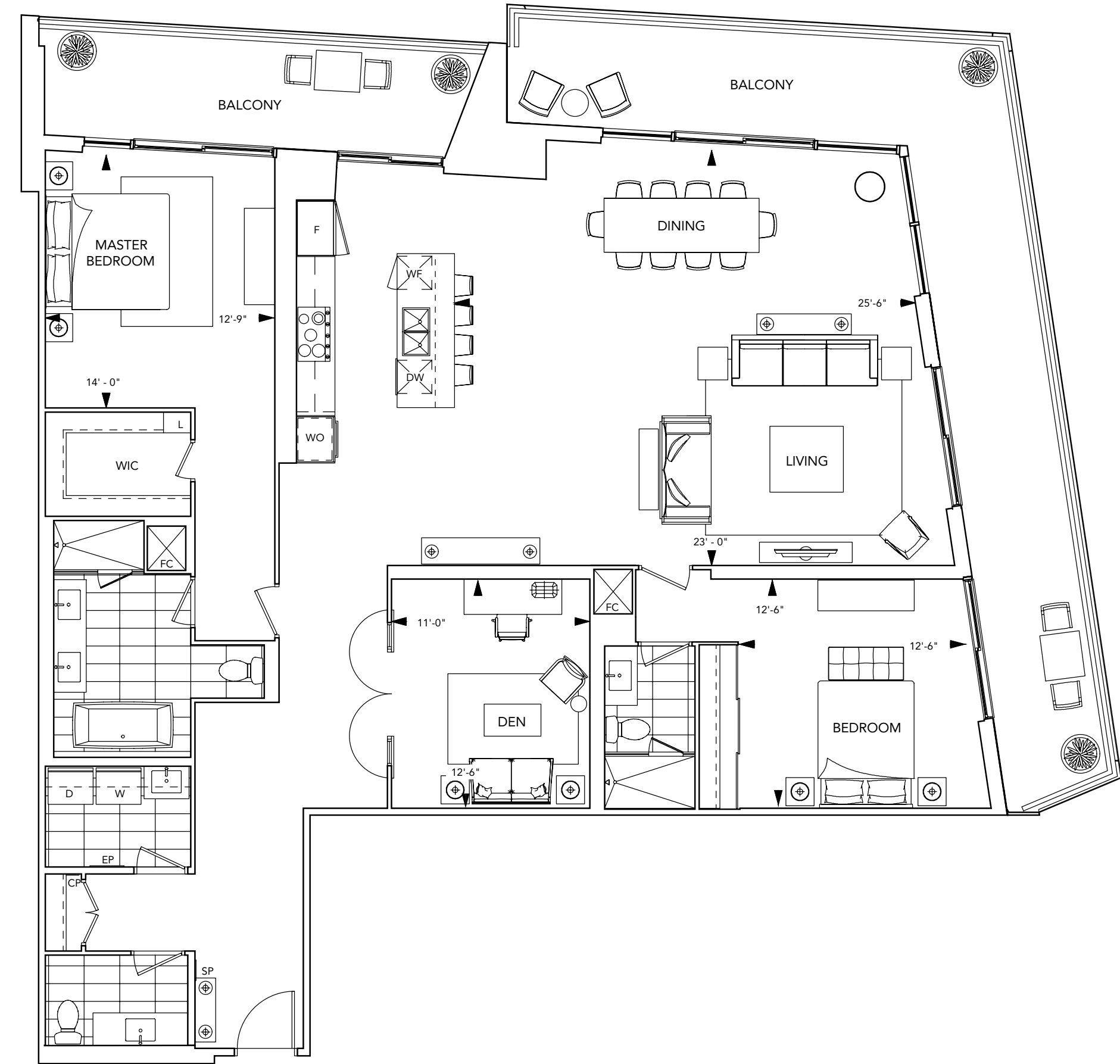
Floors 2-5



THE LAKESIDE  
collection

All dimensions are approximate and subject to normal construction variances. Dimensions may exceed the useable floor area. Sizes and specifications subject to change without notice. Furniture is displayed for illustration purposes only and does not necessarily reflect the electrical plan for the suite. Suites are sold unfurnished. Balcony and Façade Variations may apply, contact a sales representative for further details. E.&O.E. Tridel®, Tridel Built for Life® and Tridel Built Green. Built for Life® are registered trademarks of Tridel and used under license. ©Tridel 2016. All rights reserved. September 2016.

www.benchmarksignaturerealty.com



# SUITE FEATURES & FINISHES

## GENERAL

- Smooth ceilings painted white in all areas of suite.

## FLOOR COVERINGS

- Premium plank engineered floor with acoustic underlay in all rooms excluding bathrooms and laundry.
- Selection of porcelain / natural stone floor tiles for master ensuite and powder room(s). Designer selected premium porcelain floor tiles in other bathroom(s) and laundry.

## KITCHEN

- Designer kitchen cabinetry with contemporary, full height flat panel doors complete with built-in appliances. Finishes include a selection of matte finish and wood grain laminate or wood veneer.
- Granite or quartz kitchen countertop and matching backsplash with polished double square edge and deep undermount, stainless steel double bowl sink.
- Distinctive multitask island with waterfall edge, complete with granite or quartz countertop.
- Polished chrome, single lever Hansgrohe kitchen faucet with integrated pull down spray.

- Suites 2F, 2F1, 2K+D, 2K+DA, 2K+DB, 2K+D1, 2R+D, 2Y+D and 2T+D will feature:
  - Miele 30" built-in integrated refrigerator with matching panel door
  - Miele 30" built-in stainless steel convection wall oven
  - Miele 30" built-in gas cooktop
  - Miele 24" integrated dishwasher with matching panel door

- All other suites will feature:
  - Miele 36" built-in integrated refrigerator with matching panel door
  - Miele 30" built-in stainless steel convection wall oven
  - Miele 36" built-in gas cooktop
  - Miele 24" integrated dishwasher with matching panel door

- Built-in, stainless steel microwave complete with trim kit.
- Recessed hood fan insert.

- Energy saving LED under-cabinet lighting.
- Recessed LED lighting in kitchen area.

## BATHROOM(S)

- Master ensuite bathroom to feature custom vanity with choice of natural stone or quartz countertop with double square edge and undermount rectangular basin, featuring contemporary flat panel cabinetry. All other bathrooms to feature custom vanity with white quartz countertop.

- Master ensuite bathroom to feature vanity mirror with integrated lighting and storage cabinet. All other bathrooms to feature vanity mirror with wall sconce lighting above.

- 5' soaker tub with polished chrome single lever faucet and glass enclosure (no door). Master ensuite tub features 5'6" free-standing tub with wall mounted faucet where indicated on plan.

- Pressure balanced, temperature controlled chrome shower faucet.

- Porcelain tiles in tub and shower enclosure and toilet wall. Master ensuite bathrooms to feature a choice of porcelain or natural stone tiles.

- Shower light in ceiling of shower stalls and tub(s).

- Energy efficient, low-flow shower head(s).

- Polished chrome vanity faucet in bathroom(s).

- Low-flow high performance toilet(s).

- Shower stall(s) feature frameless glass enclosure with chrome hardware.

## POWDER ROOM(S)

- Custom vanity with choice of natural stone or quartz countertop with vessel sink, featuring flat panel cabinetry.

- Vanity mirror with wall sconce lighting above.

- Hansgrohe polished chrome vanity faucet in bathroom(s).

- Low-flow high performance toilet(s).



## Benchmark Signature Realty INC. Brokerage

1020 Denison Street Unit 113

L3R 3W5 Markham Ontario

Tel 905 604 2299 Fax 905 604 0622

<http://www.benchmarksignaturerealty.com>