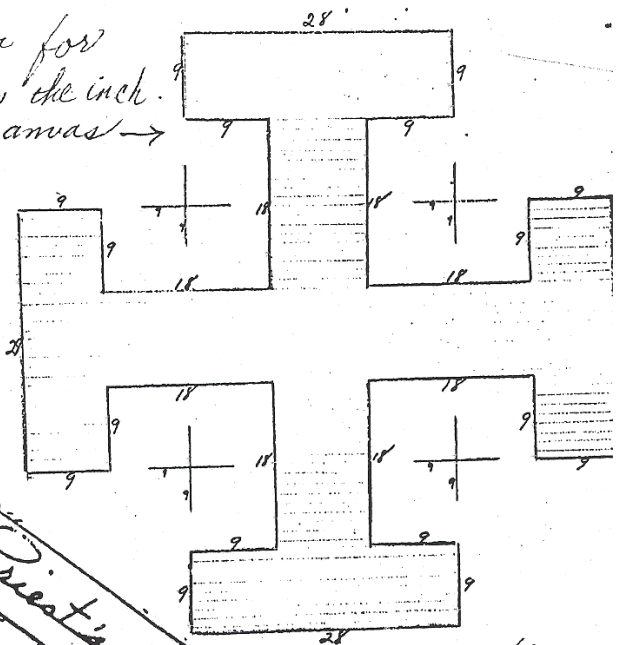


CUT 4

National Council Catholic Women's Priest's Stole Pattern & Instructions

Diagram for 14 stitches the inch. waste canvas ->



ASSEMBLE

After Embroidery

Seams, 5/8"

- a) Sew together 2 fronts at neck seam.
- b) Sew together 2 backs at neck seam.
- c) Sew front to back, leaving seam open at neck, 6 inches.
- d) Turn to right side, slip stitch opening, press well.
- e) optional - sew a 10" long white tape, or sutach, in the inside neck edge, 5" from center seam, both sides. (Some priest's feel it holds stole in place).

SUPPLIES

Material: White, 65% polyester & 35% cotton, 45" wide, or similar washable white cloth. 'Cloth World Fabric Stores' carry it under "wheelwing" 1 2/3 yds

Thread: (embroidery) D.M.C. #796 for outer edge of Jerusalem Cross. 1 skein

4 skeins, D.M.C. #995 for inside cross stitches, and small crosses, and N.C.C.W. letters on lower left bottom.

Waste Canvas: 1/6 yds of '12 stitches to the inch' waste canvas, sold in stitchery stores. cut into 4, 6" squares.

Questions??
call Dorothy Griffin
904-445-3935

EMBROIDERY Follow sample below for stitch count

- 1) Baste, centered 6"x6" canvas to cloth, allowing for canvas border, so that cross will start 12 inches from top of stole, measuring on short side, and 12" from bottom for lower crosses.
- 2) Separate thread. Use only 2 of 6 strands, or 1/3 thickness.
- 3) Sew, in cross-stitch, thru canvas and material, around entire outer edge of cross in dark blue thread, #796.
- 4) Sew, in cross-stitch, thru canvas and material, entire inside of cross in light blue thread #995.
- 5) Work small crosses, light blue, on two upper symbols, and on the right lower symbol. Stitch in N.C.C.W. on the lower left symbol.
- 6) Dampen work slightly, cold water, and pull threads of canvas out, (use tweezers if necessary), leaving only stitching on stole.

BACK