



## FLEX TAPE WARM WHITE 240 LED P/METER

For indoor use - including 3M adhesive tape  
2700K

**Ordercode:** 127-068  
**EAN:** 8714984908475  
**Input:** 24V  
**Power:** 96 Watt  
**PCB color:** White  
**LED Qty:** 1200

**LED distance:** 0,83cm  
**Cutting distance:** 5cm  
**Beam:** 120°  
**Lumen p/meter:** 1200  
**Length:** 5m  
**Width:** 8mm

**Height:** 2,5mm  
**Max. to connect:** 5 meter  
**Connection Type:** Striped wire  
**IP Rate:** IP20  
**LED:** 3528  
**Carton Quantity:** 20



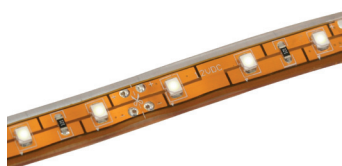
## FLEX TAPE RGB 60 LED P/METER HIGH BRIGHT

For indoor use - coating on top - including 3M adhesive tape  
LED's are encapsulated for a better protection against dust, cleaning, etc.

**Ordercode:** 127-010  
**EAN:** 8714984908482  
**Input:** 24V  
**Power:** 72 Watt  
**PCB color:** White  
**LED Qty:** 300

**LED distance:** 1,67cm  
**Cutting distance:** 10cm  
**Beam:** 120°  
**Lumen p/meter:** 564  
**Length:** 5m  
**Width:** 12mm

**Height:** 3mm  
**Max. to connect:** 8 meter  
**Connection Type:** Striped wire  
**IP Rate:** IP20  
**LED:** Tri Chip  
**Carton Quantity:** 25



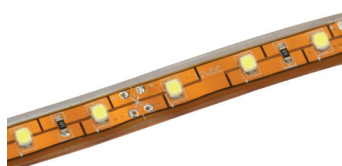
## FLEX TAPE WHITE 60 LED P/METER

For outdoor use  
6500K

**Ordercode:** 127-032  
**EAN:** 8714984905016  
**Input:** 12V  
**Power:** 20 Watt  
**PCB color:** Brown  
**LED Qty:** 300

**LED distance:** 1,67cm  
**Cutting distance:** 5cm  
**Beam:** 120°  
**Lumen p/meter:** 265  
**Length:** 5m  
**Width:** 10mm

**Height:** 3,8mm  
**Max. to connect:** 6 meter  
**Connection Type:** Plug connection  
**IP Rate:** IP65  
**LED:** 3528  
**Carton Quantity:** 3



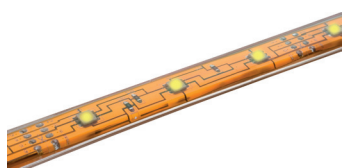
## FLEX TAPE WARM WHITE 60 LED P/METER

For outdoor use  
3000K

**Ordercode:** 127-039  
**EAN:** 8714984905023  
**Input:** 12V  
**Power:** 20 Watt  
**PCB color:** Brown  
**LED Qty:** 300

**LED distance:** 1,67cm  
**Cutting distance:** 5cm  
**Beam:** 120°  
**Lumen p/meter:** 235  
**Length:** 5m  
**Width:** 10mm

**Height:** 3,8mm  
**Max. to connect:** 6 meter  
**Connection Type:** Plug connection  
**IP Rate:** IP65  
**LED:** 3528  
**Carton Quantity:** 3



## FLEX TAPE WARM WHITE 50 LED P/METER HIGH BRIGHT

For outdoor use  
3000K

**Ordercode:** 127-028  
**EAN:** 8714984903876  
**Input:** 24V  
**Power:** 36 Watt  
**PCB color:** Brown  
**LED Qty:** 250

**LED distance:** 2cm  
**Cutting distance:** 10cm  
**Beam:** 120°  
**Lumen p/meter:** 650  
**Length:** 5m  
**Width:** 14 mm

**Height:** 5,5 mm  
**Max. to connect:** 9 meter  
**Connection Type:** Plug connection  
**IP Rate:** IP65  
**LED:** 5050  
**Carton Quantity:** 2x

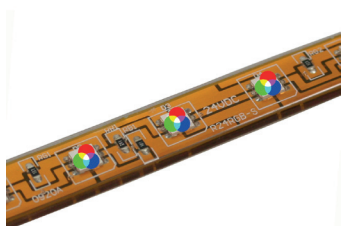


## CONNECTOR SET FOR 127-032, 127-039 AND 127-028

To connect two rolls

**Ordercode:** 127-203  
**EAN:** 8714984903968

**IP Rate:** IP65  
**Carton Quantity:** 10



## FLEX TAPE RGB 50 LED P/METER

For outdoor use

**Ordercode:** 127-105  
**EAN:** 8714984903883  
**Input:** 24V  
**Power:** 26,4 Watt  
**PCB color:** Brown  
**LED Qty:** 150

**LED distance:** 2cm  
**Cutting distance:** 12,5cm  
**Beam:** 120°  
**Length:** 3m  
**Width:** 14 mm

**Height:** 3,8mm  
**Max. to connect:** 6 meter  
**Connection Type:** Plug connection  
**IP Rate:** IP65  
**LED:** Tri Chip  
**Carton Quantity:** 2x



## CONNECTOR SET FOR 127-105

**Ordercode:** 127-201  
**EAN:** 8714984903951

**IP Rate:** IP65  
**Carton Quantity:** 10



## FLEXTAPE VERTICAL WHITE 60 LED P/METER

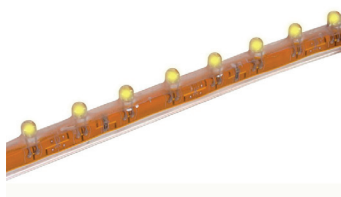
For outdoor use

6500K

**Ordercode:** 132-011  
**EAN:** 8714984903616  
**Input:** 12V  
**Power:** 14,4 Watt  
**PCB color:** Brown  
**LED Qty:** 180

**LED distance:** 1,67cm  
**Cutting distance:** 5cm  
**Beam:** 80°  
**Lumen p/meter:** 240  
**Length:** 3m  
**Width:** 15mm

**Height:** 8mm  
**Max. to connect:** 6 meter  
**Connection Type:** Plug Connection  
**IP Rate:** IP65  
**LED:** Top  
**Carton Quantity:** 2x



## FLEXTAPE VERTICAL WARM WHITE 60 LED P/METER

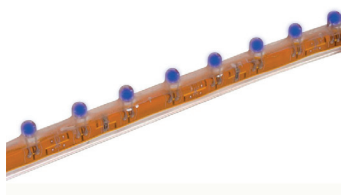
For outdoor use

3000K

**Ordercode:** 132-018  
**EAN:** 8714984903623  
**Input:** 12V  
**Power:** 14,4 Watt  
**PCB color:** Brown  
**LED Qty:** 180

**LED distance:** 1,67cm  
**Cutting distance:** 5cm  
**Beam:** 80°  
**Lumen p/meter:** 210  
**Length:** 3m  
**Width:** 15mm

**Height:** 8mm  
**Max. to connect:** 6 meter  
**Connection Type:** Plug Connection  
**IP Rate:** IP65  
**LED:** Top  
**Carton Quantity:** 2x



## FLEXTAPE VERTICAL BLUE 60 LED P/METER

For outdoor use

**Ordercode:** 132-012  
**EAN:** 8714984903630  
**Input:** 12V  
**Power:** 14,4 Watt  
**PCB color:** Brown  
**LED Qty:** 180

**LED distance:** 1,67cm  
**Cutting distance:** 5cm  
**Beam:** 80°  
**Length:** 3m  
**Width:** 15mm

**Height:** 8mm  
**Max. to connect:** 6 meter  
**Connection Type:** Plug Connection  
**IP Rate:** IP65  
**LED:** Top  
**Carton Quantity:** 2x



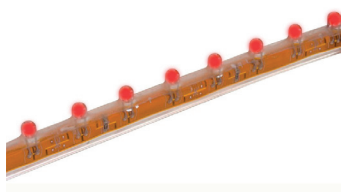
## FLEXTAPE VERTICAL GREEN 60 LED P/METER

For outdoor use

**Ordercode:** 132-013  
**EAN:** 8714984903647  
**Input:** 12V  
**Power:** 14,4 Watt  
**PCB color:** Brown  
**LED Qty:** 180

**LED distance:** 1,67cm  
**Cutting distance:** 5cm  
**Beam:** 80°  
**Length:** 3m  
**Width:** 15mm

**Height:** 8mm  
**Max. to connect:** 6 meter  
**Connection Type:** Plug Connection  
**IP Rate:** IP65  
**LED:** Top  
**Carton Quantity:** 2x



## FLEXTAPE VERTICAL RED 60 LED P/METER

For outdoor use

**Ordercode:** 132-014  
**EAN:** 8714984903654  
**Input:** 12V  
**Power:** 14,4 Watt  
**PCB color:** Brown  
**LED Qty:** 180

**LED distance:** 1,67cm  
**Cutting distance:** 5cm  
**Beam:** 80°  
**Length:** 3m  
**Width:** 15mm

**Height:** 8mm  
**Max. to connect:** 6 meter  
**Connection Type:** Plug Connection  
**IP Rate:** IP65  
**LED:** Top  
**Carton Quantity:** 2x



## FLEXTAPE VERTICAL YELLOW 60 LED P/METER

For outdoor use

**Ordercode:** 132-015  
**EAN:** 8714984903661  
**Input:** 12V  
**Power:** 14,4 Watt  
**PCB color:** Brown  
**LED Qty:** 180

**LED distance:** 1,67cm  
**Cutting distance:** 5cm  
**Beam:** 80°  
**Length:** 3m  
**Width:** 15mm

**Height:** 8mm  
**Max. to connect:** 6 meter  
**Connection Type:** Plug Connection  
**IP Rate:** IP65  
**LED:** Top  
**Carton Quantity:** 2x



## CONNECTOR SET FOR 132-SERIE

**Ordercode:** 127-203  
**EAN:** 8714984903968

**IP Rate:** IP65  
**Carton Quantity:** 10



## FLEX TAPE WARM WHITE IP68 60 LED P/METER

For outdoor use - under water

3000-3500K

**Ordercode:** 127-078  
**EAN:** 8714984907324  
**Input:** 24V  
**Power:** 24 Watt  
**PCB color:** White  
**LED Qty:** 300

**LED distance:** 1,67cm  
**Cutting distance:** 10cm  
**Beam:** 120°  
**Lumen p/meter:** 959  
**Length:** 5m  
**Width:** 10mm

**Height:** 5mm  
**Max. to connect:** 5 meter  
**Connection Type:** Plug Connector  
**IP Rate:** IP68  
**LED:** 3528  
**Carton Quantity:** 18x



## FLEX TAPE WARM WHITE IP68 120 LED P/METER

For outdoor use - under water

3000-3500K

**Ordercode:** 127-088  
**EAN:** 8714984907331  
**Input:** 24V  
**Power:** 48 Watt  
**PCB color:** White  
**LED Qty:** 600

**LED distance:** 0,83cm  
**Cutting distance:** 5cm  
**Beam:** 120°  
**Lumen p/meter:** 1491  
**Length:** 5m  
**Width:** 10mm

**Height:** 5mm  
**Max. to connect:** 5 meter  
**Connection Type:** Plug Connector  
**IP Rate:** IP68  
**LED:** 3528  
**Carton Quantity:** 18x



## FLEX TAPE WARM WHITE IP68 36 LED P/METER HIGH BRIGHT

For outdoor use - under water

3000-3500K

**Ordercode:** 127-098  
**EAN:** 8714984907348  
**Input:** 24V  
**Power:** 43 Watt  
**PCB color:** White  
**LED Qty:** 180

**LED distance:** 2,78cm  
**Cutting distance:** 16,6cm  
**Beam:** 120°  
**Lumen p/meter:** 1669  
**Length:** 5m  
**Width:** 12mm

**Height:** 5mm  
**Max. to connect:** 5 meter  
**Connection Type:** Plug Connector  
**IP Rate:** IP68  
**LED:** 5050  
**Carton Quantity:** 18x



## FLEX TAPE WARM WHITE IP68 60 LED P/METER HIGH BRIGHT

For outdoor use - under water

3000-3500K

**Ordercode:** 127-108  
**EAN:** 8714984907355  
**Input:** 24V  
**Power:** 72 Watt  
**PCB color:** White  
**LED Qty:** 300

**LED distance:** 1,67cm  
**Cutting distance:** 10cm  
**Beam:** 120°  
**Lumen p/meter:** 2769  
**Length:** 5m  
**Width:** 14mm

**Height:** 5mm  
**Max. to connect:** 5 meter  
**Connection Type:** Plug Connector  
**IP Rate:** IP68  
**LED:** 5050  
**Carton Quantity:** 18x



## FLEX TAPE RGB IP68 60 LED P/METER HIGH BRIGHT

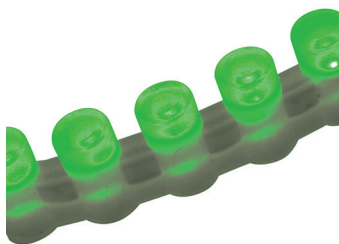
For outdoor use - under water

3000-3500K

**Ordercode:** 127-070  
**EAN:** 8714984907928  
**Input:** 24V  
**Power:** 72 Watt  
**PCB color:** White  
**LED Qty:** 300

**LED distance:** 1,67cm  
**Cutting distance:** 10cm  
**Beam:** 120°  
**Lumen p/meter:** 959  
**Length:** 5m  
**Width:** 14mm

**Height:** 5mm  
**Max. to connect:** 5 meter  
**Connection Type:** Plug Connector  
**IP Rate:** IP68  
**LED:** 50 50  
**Carton Quantity:** 18x



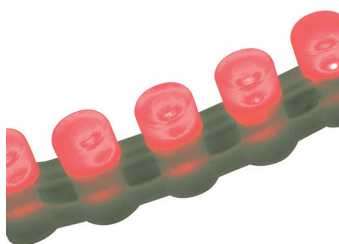
## SILICON FLEX STRING GREEN

for outdoor use

**Ordercode:** 132-003  
**EAN:** 8714984008991  
**Input:** 12V  
**Power:** 7,7 Watt  
**LED Qty:** 96

**LED distance:** 5mm  
**Cutting distance:** 3,3cm  
**Beam:** 100°  
**Lumen p/meter:** 315  
**Length:** 1m  
**Width:** 7mm

**Height:** 13mm  
**Max. to connect:** 1 meter  
**Connection Type:** Striped wire  
**IP Rate:** IP68  
**LED:** Top  
**Carton Quantity:** 2



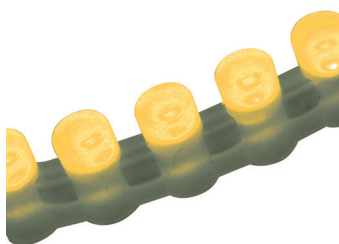
## SILICON FLEX STRING RED

for outdoor use

**Ordercode:** 132-004  
**EAN:** 8714984009004  
**Input:** 12V  
**Power:** 7,7 Watt  
**LED Qty:** 96

**LED distance:** 5mm  
**Cutting distance:** 3,3cm  
**Beam:** 100°  
**Lumen p/meter:** 315  
**Length:** 1m  
**Width:** 7mm

**Height:** 13mm  
**Max. to connect:** 1 meter  
**Connection Type:** Striped wire  
**IP Rate:** IP68  
**LED:** Top  
**Carton Quantity:** 2



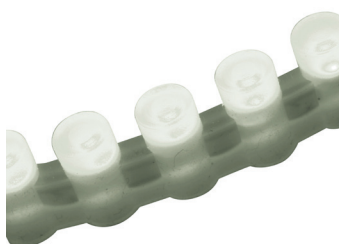
## SILICON FLEX STRING YELLOW

for outdoor use

**Ordercode:** 132-005  
**EAN:** 8714984009011  
**Input:** 12V  
**Power:** 7,7 Watt  
**LED Qty:** 96

**LED distance:** 5mm  
**Cutting distance:** 3,3cm  
**Beam:** 100°  
**Lumen p/meter:** 315  
**Length:** 1m  
**Width:** 7mm

**Height:** 13mm  
**Max. to connect:** 1 meter  
**Connection Type:** Striped wire  
**IP Rate:** IP68  
**LED:** Top  
**Carton Quantity:** 2



## SILICON FLEX STRING WHITE

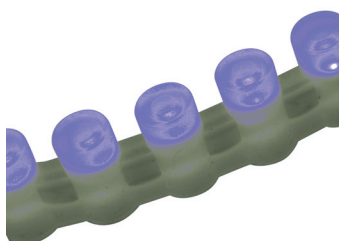
for outdoor use

6500K

**Ordercode:** 132-001  
**EAN:** 8714984008977  
**Input:** 12V  
**Power:** 7,7 Watt  
**LED Qty:** 96

**LED distance:** 5mm  
**Cutting distance:** 3,3cm  
**Beam:** 100°  
**Lumen p/meter:** 315  
**Length:** 1m  
**Width:** 7mm

**Height:** 13mm  
**Max. to connect:** 1 meter  
**Connection Type:** Striped wire  
**IP Rate:** IP68  
**LED:** Top  
**Carton Quantity:** 2



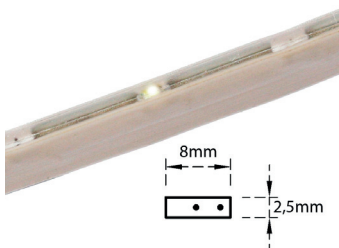
## SILICON FLEX STRING BLUE

for outdoor use

**Ordercode:** 132-002  
**EAN:** 8714984008984  
**Input:** 12V  
**Power:** 7,7 Watt  
**LED Qty:** 96

**LED distance:** 5mm  
**Cutting distance:** 3,3cm  
**Beam:** 100°  
**Lumen p/meter:** 315  
**Length:** 1m  
**Width:** 7mm

**Height:** 13mm  
**Max. to connect:** 1 meter  
**Connection Type:** Striped wire  
**IP Rate:** IP68  
**LED:** Top  
**Carton Quantity:** 2



## SUPER FLEX VERTICAL WHITE

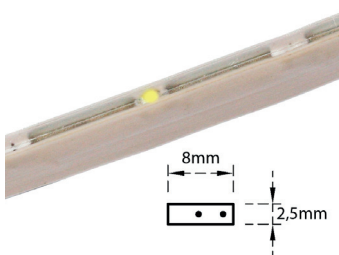
for outdoor use

6500K

**Ordercode:** 132-021  
**EAN:** 8714984905603  
**Input:** 24V  
**Power:** 44 Watt  
**LED Qty:** 720

**LED distance:** 2,78cm  
**Cutting distance:** 16,7cm  
**Beam:** 120°  
**Length:** 20m  
**Width:** 8mm

**Height:** 2,5mm  
**Max. to connect:** 20 meter  
**Connection Type:** Striped wire  
**IP Rate:** IP67  
**LED:** Top  
**Carton Quantity:** 1



## SUPER FLEX VERTICAL WARM WHITE

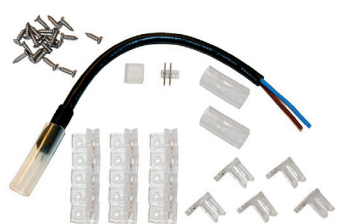
for outdoor use

3000K

**Ordercode:** 132-028  
**EAN:** 8714984905610  
**Input:** 24V  
**Power:** 44 Watt  
**LED Qty:** 720

**LED distance:** 2,78cm  
**Cutting distance:** 16,7cm  
**Beam:** 120°  
**Length:** 20m  
**Width:** 8mm

**Height:** 2,5mm  
**Max. to connect:** 20 meter  
**Connection Type:** Striped wire  
**IP Rate:** IP67  
**LED:** Top  
**Carton Quantity:** 1



## ACCESSORY KIT

power cable, splice connector, h-s tube, clips and end cap

**Ordercode:** 132-100  
**EAN:** 8714984905627

**Carton Quantity:** 1



## ALUMINIUM CHANNEL FOR SUPER FLEX VERTICAL

1 meter length

**Ordercode:** 132-101  
**EAN:** 8714984905634

**Max. to connect:** 1 meter  
**Carton Quantity:** 1



## SUPER FLEX MINI Ø3.5MM WHITE

for outdoor use - fixed length

6500K

**Ordercode:** 132-031  
**EAN:** 8714984905672  
**Input:** 24V  
**Power:** 44 Watt  
**LED Qty:** 720

**LED distance:** 2,78cm  
**Beam:** 120°  
**Length:** 20m  
**Width:** 3,5mm

**Height:** 3,5mm  
**Max. to connect:** 20 meter  
**Connection Type:** Striped wire  
**IP Rate:** IP67  
**LED:** Top  
**Carton Quantity:** 1





## SUPER FLEX MINI Ø3.5MM WARM WHITE

for outdoor use - fixed length

3000K

**Ordercode:** 132-038  
**EAN:** 8714984908789  
**Input:** 24V  
**Power:** 44 Watt  
**LED Qty:** 720

**LED distance:** 2,78cm  
**Beam:** 120°  
**Length:** 20m  
**Width:** 3,5mm

**Height:** 3,5mm  
**Max. to connect:** 20 meter  
**Connection Type:** Striped wire  
**IP Rate:** IP67  
**LED:** Top  
**Carton Quantity:** 1



## 20CM WIRE WITH DC MALE PLUG AND STRIPED WIRE

10 pcs in a bag - Price p/10 pcs

**Ordercode:** 120-107

**Length:** 20 cm

**IP Rate:** IP20  
**Carton Quantity:** 1



## 20CM WIRE WITH DC FEMALE PLUG AND STRIPED WIRE

10 pcs in a bag - Price p/10 pcs

**Ordercode:** 120-108

**Length:** 20 cm

**IP Rate:** IP20  
**Carton Quantity:** 1



## EXTENSION CABLE DC 75CM

2 pcs in a bag - Price per piece

**Ordercode:** 120-101

**Length:** 75 cm

**IP Rate:** IP20  
**Carton Quantity:** 18x



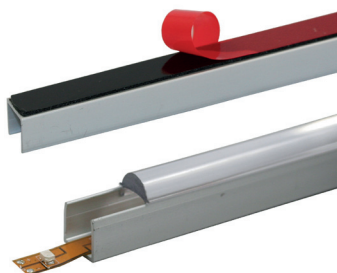
## EXTENSION CABLE DC 150CM

2 pcs in a bag - Price per piece

**Ordercode:** 120-104

**Length:** 150 cm

**IP Rate:** IP20  
**Carton Quantity:** 18x



## ALU CHANNEL - 2 METER

For flex tape (max. 12mm wide)

*Cover not included*

**Ordercode:** 127-220  
**EAN:** 8714984905924

**IP Rate:** IP20  
**Carton Quantity:** 50



## COVER POLYCARBONATE CLEAR - 1 METER

For Alu channel

**Ordercode:** 127-221  
**EAN:** 8714984907546

**IP Rate:** IP20  
**Carton Quantity:** 50



## COVER POLYCARBONATE FROSTED - 2 METER

For Alu channel

**Ordercode:** 127-223  
**EAN:** 8714984909458

**IP Rate:** IP20  
**Carton Quantity:** 50



## ALU CHANNEL - 2 METER

For flex tape (max. 12,2mm wide)

*Cover included*

**Ordercode:** 127-228  
**Inner size:** W12,2 x H15,8mm

**Cover:** Opal matt

**Carton Quantity:** 25

**End Cap available**



## ALU CHANNEL RECESSED - 2 METER

For flex tape (max. 12,4mm wide)

*Cover included*

**Ordercode:** 127-224  
**Inner size:** W12,40 x H7mm

**Cover:** Opal matt

**Carton Quantity:** 25

**End Cap available**





## ALU CHANNEL - 2 METER

For flex tape (max. 12,4mm wide)

*Cover included*

**Ordercode:** 127-225

**Inner size:** W12,4 x H7,3mm

**Cover:** Opal matt

**Carton Quantity:** 25

**End Cap available**  
**Mounting Clip available**



## ALU CHANNEL - 2 METER

For flex tape (max. 12,2mm wide)

*Cover included*

**Ordercode:** 127-226

**Inner size:** W12,2 x H18,5mm

**Cover:** Opal matt 45°

**Carton Quantity:** 25

**End Cap available**  
**Mounting Clip available**



## ALU CHANNEL - 2 METER

For flex tape (max. 12,2mm wide)

*Cover included*

**Ordercode:** 127-227

**Inner size:** W12,2 x H18,5mm

**Cover:** Opal semi matt 45°

**Carton Quantity:** 25

**End Cap available**  
**Mounting Clip available**

## FLEX TAPE

This is maybe the most versatile product in Led lighting and Tronix offers a wide range in high quality Flex Tape.

Some of the most used applications are as cove light, kitchen plint lighting and as lighting in showcases. We also offer a large range in aluminum and pvc channel which make the product even more usable.

## Background Modules



### 2 LED MINI MODULE OUTDOOR WHITE

100 modules on 5 meter cable  
max. to connect is 100 modules in one line

**Ordercode:** 125-021  
**EAN:** 8714984905474  
**Color:** White  
**Input:** 12V  
**Power:** 0,24 Watt  
**Beam:** 120°

**Lumen:** 8  
**Length:** 38mm  
**Width:** 15mm  
**Depth:** 5mm  
**Conn Type:** Striped Wire  
**Dimmable:** Yes

**IP Rate:** IP65  
**LED Brand:** Epistar  
**LED Type:** 3825  
**Carton Quantity:** 100



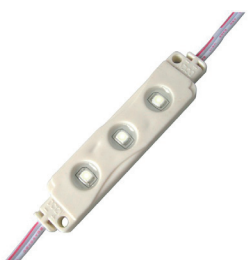
### 4 LED MODULE OUTDOOR WHITE

50 modules on 5 meter cable  
max. to connect is 50 modules in one line

**Ordercode:** 125-011  
**EAN:** 8714984007451  
**Color:** White  
**Input:** 12V  
**Power:** 0,48 Watt  
**Beam:** 120°

**Lumen:** 27,5  
**Length:** 41mm  
**Width:** 28mm  
**Depth:** 5,9mm  
**Conn Type:** Striped Wire  
**Dimmable:** Yes

**IP Rate:** IP65  
**LED Brand:** Epistar  
**LED Type:** 3825  
**Carton Quantity:** 50



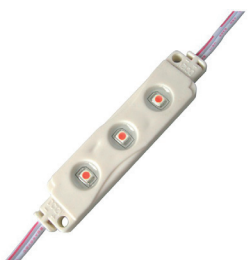
### 3 LED SUPER BRIGHT OUTDOOR WHITE

50 modules on 5 meter cable  
max. to connect is 50 modules in one line

**Ordercode:** 125-031  
**EAN:** 8714984904934  
**Color:** White  
**Input:** 12V  
**Power:** 0,6 Watt  
**Beam:** 120°

**Lumen:** 40  
**Length:** 62mm  
**Width:** 17mm  
**Depth:** 2,8mm  
**Conn Type:** Striped Wire  
**Dimmable:** Yes

**IP Rate:** IP65  
**LED Brand:** Epistar  
**LED Type:** 5050  
**Carton Quantity:** 50



### 3 LED SUPER BRIGHT OUTDOOR RED

50 modules on 5 meter cable  
max. to connect is 50 modules in one line

**Ordercode:** 125-034  
**EAN:** 8714984905054  
**Color:** Red  
**Input:** 12V  
**Power:** 0,6 Watt  
**Beam:** 120°

**Lumen:** 40  
**Length:** 62mm  
**Width:** 17mm  
**Depth:** 2,8mm  
**Conn Type:** Striped Wire  
**Dimmable:** Yes

**IP Rate:** IP65  
**LED Brand:** Epistar  
**LED Type:** 5050  
**Carton Quantity:** 50



### 3 LED SUPER BRIGHT OUTDOOR WARM WHITE

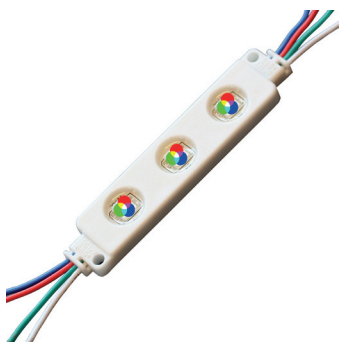
50 modules on 5 meter cable  
max. to connect is 50 modules in one line

**Ordercode:** 125-038  
**EAN:** 8714984904958  
**Color:** Warm White  
**Input:** 12V  
**Power:** 0,6 Watt  
**Beam:** 120°

**Lumen:** 30  
**Length:** 62mm  
**Width:** 17mm  
**Depth:** 2,8mm  
**Conn Type:** Striped Wire  
**Dimmable:** Yes

**IP Rate:** IP65  
**LED Brand:** Epistar  
**LED Type:** 5050  
**Carton Quantity:** 50

## Background Modules



### 3 LED SUPER BRIGHT OUTDOOR RGB

50 modules on 5 meter cable  
*max. to connect is 50 modules in one line*

**Ordercode:** 125-000  
**EAN:** 8714984905566  
**Color:** RGB  
**Input:** 12V  
**Power:** 0,6 Watt  
**Beam:** 120°

**Lumen:** 12  
**Length:** 82mm  
**Width:** 17mm  
**Depth:** 5,8mm  
**Conn Type:** Striped Wire  
**Dimmable:** Yes

**IP Rate:** IP65  
**LED Brand:** Epistar  
**LED Type:** 5050  
**Carton Quantity:** 50



### 1 LED HIGH POWER OUTDOOR WHITE

20 modules on 3 meter cable  
*max. to connect is 20 modules in one line*

**Ordercode:** 125-041  
**EAN:** 8714984904965  
**Color:** White  
**Input:** 12V  
**Power:** 1 Watt  
**Beam:** 120°

**Lumen:** 70  
**Length:** 67mm  
**Width:** 37mm  
**Depth:** 7,5mm  
**Conn Type:** Striped Wire  
**Dimmable:** Yes

**IP Rate:** IP65  
**LED Brand:** Nichia  
**LED Type:** High Power  
**Carton Quantity:** 20



### 1 LED HIGH POWER OUTDOOR WARM WHITE

20 modules on 3 meter cable  
*max. to connect is 20 modules in one line*

**Ordercode:** 125-048  
**EAN:** 8714984904972  
**Color:** Warm White  
**Input:** 12V  
**Power:** 1 Watt  
**Beam:** 120°

**Lumen:** 60  
**Length:** 67mm  
**Width:** 37mm  
**Depth:** 7,5mm  
**Conn Type:** Striped Wire  
**Dimmable:** Yes

**IP Rate:** IP65  
**LED Brand:** Nichia  
**LED Type:** High Power  
**Carton Quantity:** 20



### POWER SUPPLY 12V - 30W

Block Type Slim - Outdoor  
*perfect to use with background modules*

**Ordercode:** 215-090  
**EAN:** 8714984009493  
**Input:** 230V  
**Output:** 12V  
**Power:** 30 Watt

**Length:** 220mm  
**Width:** 30mm  
**Depth:** 21mm  
**Wire Length in:** 250mm

**Wire Length out:** 250mm  
**Conn Type:** Striped wire  
**IP Rate:** IP67  
**Carton Quantity:** 50



### POWER SUPPLY 12V - 45W

Block Type Slim - Outdoor  
*perfect to use with background modules*

**Ordercode:** 215-091  
**EAN:** 8714984905115  
**Input:** 230V  
**Output:** 12V  
**Power:** 45 Watt

**Length:** 220mm  
**Width:** 30mm  
**Depth:** 21mm  
**Wire Length in:** 250mm

**Wire Length out:** 250mm  
**Conn Type:** Striped wire  
**IP Rate:** IP67  
**Carton Quantity:** 50



## WATERPROOF LIGHTBAR WHITE

Connection cable + mounting clips included

**Ordercode:** 128-031  
**EAN:** 8714984903678  
**Color:** White  
**Input:** 12V  
**Power:** 2,4 Watt  
**LED Qty:** 30

**Max. to connect:** 12  
**Beam:** 120°  
**Lumen:** >1200mcd\*30  
**Length:** 520mm  
**Width:** 10mm  
**Height:** 5,2mm

**Connection type:** Plug  
**Dimmable:** Yes  
**LED:** SMD  
**IP rate:** IP54  
**Carton Quantity:** 40



## WATERPROOF LIGHTBAR WARM WHITE

Connection cable + mounting clips included

**Ordercode:** 128-018  
**EAN:** 8714984903685  
**Color:** Warm White  
**Input:** 12V  
**Power:** 2,4 Watt  
**LED Qty:** 30

**Max. to connect:** 12  
**Beam:** 120°  
**Lumen:** >1150mcd\*30  
**Length:** 520mm  
**Width:** 10mm  
**Height:** 5,2mm

**Connection type:** Plug  
**Dimmable:** Yes  
**LED:** SMD  
**IP rate:** IP54  
**Carton Quantity:** 40



## WATERPROOF LIGHTBAR BLUE

Connection cable + mounting clips included

**Ordercode:** 128-012  
**EAN:** 8714984903692  
**Color:** Blue  
**Input:** 12V  
**Power:** 2,4 Watt  
**LED Qty:** 30

**Max. to connect:** 12  
**Beam:** 120°  
**Lumen:** >250mcd\*30  
**Length:** 520mm  
**Width:** 10mm  
**Height:** 5,2mm

**Connection type:** Plug  
**Dimmable:** Yes  
**LED:** SMD  
**IP rate:** IP54  
**Carton Quantity:** 40



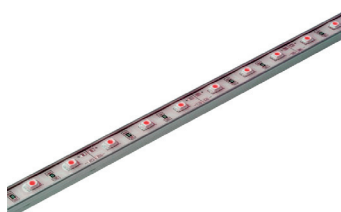
## WATERPROOF LIGHTBAR GREEN

Connection cable + mounting clips included

**Ordercode:** 128-013  
**EAN:** 8714984903708  
**Color:** Green  
**Input:** 12V  
**Power:** 2,4 Watt  
**LED Qty:** 30

**Max. to connect:** 12  
**Beam:** 120°  
**Lumen:** >700mcd\*30  
**Length:** 520mm  
**Width:** 10mm  
**Height:** 5,2mm

**Connection type:** Plug  
**Dimmable:** Yes  
**LED:** SMD  
**IP rate:** IP54  
**Carton Quantity:** 40



## WATERPROOF LIGHTBAR RED

Connection cable + mounting clips included

**Ordercode:** 128-014  
**EAN:** 8714984903715  
**Color:** Red  
**Input:** 12V  
**Power:** 2,4 Watt  
**LED Qty:** 30

**Max. to connect:** 12  
**Beam:** 120°  
**Lumen:** >600mcd\*30  
**Length:** 520mm  
**Width:** 10mm  
**Height:** 5,2mm

**Connection type:** Plug  
**Dimmable:** Yes  
**LED:** SMD  
**IP rate:** IP54  
**Carton Quantity:** 40



## WATERPROOF LIGHTBAR YELLOW

Connection cable + mounting clips included

**Ordercode:** 128-015  
**EAN:** 8714984903722  
**Color:** Yellow  
**Input:** 12V  
**Power:** 2,4 Watt  
**LED Qty:** 30

**Max. to connect:** 12  
**Beam:** 120°  
**Lumen:** >750mcd\*30  
**Length:** 520mm  
**Width:** 10mm  
**Height:** 5,2mm

**Connection type:** Plug  
**Dimmable:** Yes  
**LED:** SMD  
**IP rate:** IP54  
**Carton Quantity:** 40



## CONNECTOR SET FOR WATERPROOF LIGHTBAR

**Ordercode:** 127-203  
**EAN:** 8714984903968

**IP rate:** IP65  
**Carton Quantity:** 10



## LIGHT BAR 50CM WITH 45 SMD LEDs WHITE

incl. power-cable, connection cable, connector & mounting clips

**Ordercode:** 128-041  
**EAN:** 8714984904699  
**Color:** White  
**Input:** 24V  
**Power:** 4 Watt  
**LED Qty:** 45

**Max. to connect:** 10  
**Beam:** 120°  
**Lumen:** 270  
**Length:** 500mm  
**Width:** 19mm  
**Height:** 14mm

**Connection type:** Plug  
**Dimmable:** Yes  
**LED:** SMD  
**IP rate:** IP20  
**Carton Quantity:** 15



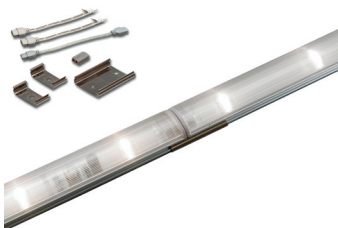
## LIGHT BAR 50CM WITH 45 SMD LEDs WARM WHITE

incl. power-cable, connection cable, connector & mounting clips

**Ordercode:** 128-028  
**EAN:** 8714984904668  
**Color:** Warm White  
**Input:** 24V  
**Power:** 4 Watt  
**LED Qty:** 45

**Max. to connect:** 10  
**Beam:** 120°  
**Lumen:** 200  
**Length:** 500mm  
**Width:** 19mm  
**Height:** 14mm

**Connection type:** Plug  
**Dimmable:** Yes  
**LED:** SMD  
**IP rate:** IP20  
**Carton Quantity:** 15



## LIGHT BAR 30CM WITH 5 HIGH POWER LEDs WHITE

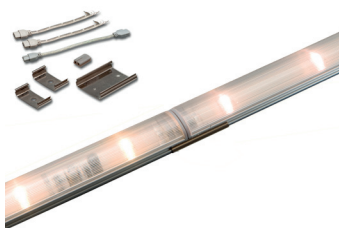
incl. power-cable, connection cable, connector & mounting clips

**Ordercode:** 128-051  
**EAN:** 8714984904712  
**Color:** White  
**Input:** 24V  
**Power:** 5 Watt  
**LED Qty:** 5

**Max. to connect:** 10  
**Beam:** 120°  
**Lumen:** 400  
**Length:** 300mm  
**Width:** 25mm  
**Height:** 15,5mm

**Connection type:** Plug  
**Dimmable:** Yes  
**LED:** Nichia High Power  
**IP rate:** IP20  
**Carton Quantity:** 12

## Light Bars



### LIGHT BAR 30CM WITH 5 HIGH POWER LEDS WARM WHITE

incl. p-cable, connection cable, connector & mounting clips

**Ordercode:** 128-038  
**EAN:** 8714984904729  
**Color:** Warm White  
**Input:** 24V  
**Power:** 5 Watt  
**LED Qty:** 5

**Max. to connect:** 10  
**Beam:** 120°  
**Lumen:** 350  
**Length:** 300mm  
**Width:** 25mm  
**Height:** 15,5mm

**Connection type:** Plug  
**Dimmable:** Yes  
**LED:** Nichia High Power  
**IP rate:** IP20  
**Carton Quantity:** 12





## Ground Spots & Marker Lights



### GROUND SPOT 2,5 WATT WHITE

Ø120 x 165mm with 2,5 Watt Cree White (module 148-101)

*Adjustable, replaceable lens - driver (700mA) not included*

**Ordercode:** 140-025  
**EAN:** 8714984909250  
**Color:** White  
**Input:** 700mA  
**Power:** 2,5 Watt

**Color temp:** 6500K  
**Beam:** 40°  
**LED Qty:** 1  
**Lumen:** 120  
**Mounting hole:** 105mm

**Cable length:** 200cm  
**IP Rate:** IP65  
**LED brand:** Cree  
**LED type:** XP  
**Carton Quantity:** 1



### GROUND SPOT 2,5 WATT WARM WHITE

Ø120 x 165mm with 2,5 Watt Cree Warm White (module 148-108)

*Adjustable, replaceable lens - driver (700mA) not included*

**Ordercode:** 140-026  
**EAN:** 8714984909267  
**Color:** Warm White  
**Input:** 700mA  
**Power:** 2,5 Watt

**Color temp:** 3150K  
**Beam:** 40°  
**LED Qty:** 1  
**Lumen:** 111  
**Mounting hole:** 105mm

**Cable length:** 200cm  
**IP Rate:** IP65  
**LED brand:** Cree  
**LED type:** XP  
**Carton Quantity:** 1



### GROUND SPOT 2,5 WATT GREEN

Ø120 x 165mm with 2,5 Watt Cree Green (module 148-103)

*Adjustable, replaceable lens - driver (700mA) not included*

**Ordercode:** 140-027  
**EAN:** 8714984909274  
**Color:** Green  
**Input:** 700mA  
**Power:** 2,5 Watt

**Beam:** 40°  
**LED Qty:** 1  
**Mounting hole:** 105mm

**Cable length:** 200cm  
**IP Rate:** IP65  
**LED brand:** Cree  
**LED type:** XP  
**Carton Quantity:** 1



### GROUND SPOT 3 LED WARM WHITE

Ø120 x 206mm with 3 LED Cree XP Warm White

*Internal driver included*

**Ordercode:** 140-051  
**EAN:** 8714984908796  
**Color:** Warm White  
**Input:** 100-230V  
**Power:** 6,5 Watt

**Color temp:** 3000K  
**Beam:** 33°  
**LED Qty:** 3  
**Lumen:** 350  
**Mounting hole:** 118mm

**Cable length:** 200cm  
**IP Rate:** IP65  
**LED brand:** Cree  
**LED type:** XP  
**Carton Quantity:** 10



### GROUND SPOT 9 LED WARM WHITE

Ø160 x 248mm with 9 LED Cree XP Warm White

*Internal driver included*

**Ordercode:** 140-055  
**EAN:** 8714984908802  
**Color:** Warm White  
**Input:** 100-230V  
**Power:** 16 Watt

**Color temp:** 3000K  
**Beam:** 17°  
**LED Qty:** 9  
**Lumen:** 1100  
**Mounting hole:** 155mm

**Cable length:** 200cm  
**IP Rate:** IP65  
**LED brand:** Cree  
**LED type:** XP  
**Carton Quantity:** 5



# Ground Spots & Marker Lights



## GROUND SPOT 15 LED WARM WHITE

Ø193 x 248mm with 15 LED Cree XP Warm White  
*Internal driver included*

**Ordercode:** 140-059  
**EAN:** 8714984908819  
**Color:** Warm White  
**Input:** 100-230V  
**Power:** 26 Watt

**Color temp:** 3000K  
**Beam:** 33°  
**LED Qty:** 15  
**Lumen:** 1750  
**Mounting hole:** 190mm

**Cable length:** 200cm  
**IP Rate:** IP65  
**LED brand:** Cree  
**LED type:** XP  
**Carton Quantity:** 1



## GROUND SPOT 21 LED WARM WHITE

Ø250 x 267mm with 21 LED Cree XP Warm White  
*Internal driver included*

**Ordercode:** 140-063  
**EAN:** 8714984908826  
**Color:** Warm White  
**Input:** 100-230V  
**Power:** 38 Watt

**Color temp:** 3000K  
**Beam:** 45°  
**LED Qty:** 21  
**Lumen:** 2300  
**Mounting hole:** 245mm

**Cable length:** 200cm  
**IP Rate:** IP65  
**LED brand:** Cree  
**LED type:** XP  
**Carton Quantity:** 1



## GROUND SPOT RGB 7,5 WATT

Ø150 x 205mm with High Power RGB 7,5 Watt spot and 700mA driver  
*With spot 148-200 - excl. controller*

**Ordercode:** 140-032  
**EAN:** 8714984904538  
**Color:** RGB  
**Input:** 24V  
**Power:** 7,5 Watt

**Beam:** 40°  
**LED Qty:** 3  
**Mounting hole:** 142mm

**Cable length:** 200cm  
**IP Rate:** IP65  
**LED brand:** Cree  
**LED type:** XP  
**Carton Quantity:** 1



## GROUND SPOT EMPTY HOUSING

Ø120 x 165mm for 50mm spots

**Ordercode:** 140-020  
**EAN:** 8714984008502

**Mounting hole:** 105mm

**Cable length:** 200cm  
**IP Rate:** IP65  
**Carton Quantity:** 20



## GROUND SPOT EMPTY HOUSING ADJUSTABLE

Ø150 x 205mm for 50mm spots Adjustable

**Ordercode:** 140-030  
**EAN:** 8714984006829

**Mounting hole:** 142mm

**Cable length:** 200cm  
**IP Rate:** IP65  
**Carton Quantity:** 6

# Ground Spots & Marker Lights



## GROUND SPOT MINI 1 X 3 WATT WARM WHITE

Ø28 x 58mm with 1 x 3 Watt Cree Warm White 45°

*Driver (350mA) not included - stainless steel 316*

**Ordercode:** 140-001  
**EAN:** 8714984904552  
**Color:** Warm White  
**Input:** 350mA  
**Power:** 1,5 Watt

**Color temp:** 3000K  
**Beam:** 45°  
**LED Qty:** 1  
**Lumen:** 80  
**Mounting hole:** 24mm

**Cable length:** 300cm  
**IP Rate:** IP67  
**LED brand:** Cree  
**LED type:** XP  
**Carton Quantity:** 60



## GROUND SPOT MEDI 1 X 3 WATT WARM WHITE

Ø40 x 93mm with 1 x 3 Watt Cree Warm White 45°

*Driver (700mA) not included - stainless steel 316*

**Ordercode:** 140-002  
**EAN:** 8714984904569  
**Color:** Warm White  
**Input:** 700mA  
**Power:** 2,5 Watt

**Color temp:** 3000K  
**Beam:** 45°  
**LED Qty:** 1  
**Lumen:** 111  
**Mounting hole:** 33mm

**Cable length:** 300cm  
**IP Rate:** IP67  
**LED brand:** Cree  
**LED type:** XP  
**Carton Quantity:** 30



## GROUND SPOT MEDI 1 X 3 WATT WARM WHITE

Ø40 x 93mm with 1 x 3 Watt Cree Warm White 10°

*Driver (700mA) not included - stainless steel 316*

**Ordercode:** 140-003  
**EAN:** 8714984908321  
**Color:** Warm White  
**Input:** 700mA  
**Power:** 2,5 Watt

**Color temp:** 3000K  
**Beam:** 10°  
**LED Qty:** 1  
**Lumen:** 111  
**Mounting hole:** 33mm

**Cable length:** 300cm  
**IP Rate:** IP67  
**LED brand:** Cree  
**LED type:** XP  
**Carton Quantity:** 30



## GROUND SPOT MEDI 1 X 3 WATT WARM WHITE

Ø42 x 93mm with 1 x 3 Watt Cree Warm White 120° (defuse)

*Driver (700mA) not included - stainless steel 316 - defuse cover*

**Ordercode:** 140-004  
**EAN:** 8714984909328  
**Color:** Warm White  
**Input:** 700mA  
**Power:** 2,5 Watt

**Color temp:** 3000K  
**Beam:** 120°  
**LED Qty:** 1  
**Lumen:** 111  
**Mounting hole:** 38,5mm

**Cable length:** 300cm  
**IP Rate:** IP67  
**LED brand:** Cree  
**LED type:** XP  
**Carton Quantity:** 30



## GROUND SPOT MEDI 1 X 3 WATT WARM WHITE

Ø59 x 103mm with 1 side light out 1 x 3 Watt

*Driver (700mA) not included*

**Ordercode:** 140-005  
**EAN:** 8714984909335  
**Color:** Warm White  
**Input:** 700mA  
**Power:** 2,5 Watt

**Color temp:** 3000K  
**Beam:** 120°  
**LED Qty:** 1  
**Lumen:** 111  
**Mounting hole:** 38,5mm

**Cable length:** 300cm  
**IP Rate:** IP67  
**LED brand:** Cree  
**LED type:** XP  
**Carton Quantity:** 1

# Ground Spots & Marker Lights



## GROUND SPOT MEDI 1 X 3 WATT WARM WHITE

Ø59 x 103mm with 2 side light out 1 x 3 Watt

*Driver (700mA) not included*

**Ordercode:** 140-006  
**EAN:** 8714984909342  
**Color:** Warm White  
**Input:** 700mA  
**Power:** 2,5 Watt

**Color temp:** 3000K  
**Beam:** 120°  
**LED Qty:** 1  
**Lumen:** 222  
**Mounting hole:** 38,5mm

**Cable length:** 300cm  
**IP Rate:** IP67  
**LED brand:** Cree  
**LED type:** XP  
**Carton Quantity:** 1



## MARKER LIGHT ROUND 78MM

Fits in universal recessed box

*Driver (700mA) not included*

**Ordercode:** 135-140  
**EAN:** 8714984909175  
**Color:** Warm White  
**Input:** 700mA  
**Power:** 2,5 Watt

**Color temp:** 3000K  
**Beam:** 120°  
**LED Qty:** 1

**IP Rate:** IP65  
**LED brand:** Cree  
**LED type:** XP  
**Carton Quantity:** 1



## MARKER LIGHT SQUARE 78MM

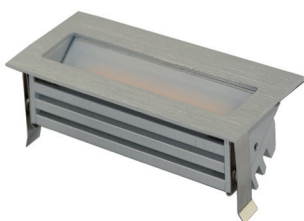
Fits in universal recessed box

*Driver (700mA) not included*

**Ordercode:** 135-141  
**EAN:** 8714984909182  
**Color:** Warm White  
**Input:** 700mA  
**Power:** 2,5 Watt

**Color temp:** 3000K  
**Beam:** 120°  
**LED Qty:** 1

**IP Rate:** IP65  
**LED brand:** Cree  
**LED type:** XP  
**Carton Quantity:** 1



## MARKER LIGHT RECTANGULAR 50 X 83MM

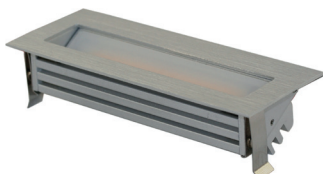
Including recessed box

*Driver (350mA) not included*

**Ordercode:** 135-142  
**EAN:** 8714984909199  
**Color:** Warm White  
**Input:** 350mA  
**Power:** 1 Watt

**Color temp:** 3000K  
**Beam:** 120°  
**LED Qty:** 1  
**Mounting hole:** 40 x 72mm

**IP Rate:** IP20  
**LED type:** MCOB  
**Carton Quantity:** 1



## MARKER LIGHT RECTANGULAR 50 X 135MM

Including recessed box

*Driver (350mA) not included*

**Ordercode:** 135-143  
**EAN:** 8714984909205  
**Color:** Warm White  
**Input:** 350mA  
**Power:** 3 Watt

**Color temp:** 3000K  
**Beam:** 120°  
**LED Qty:** 1  
**Mounting hole:** 40 x 125mm

**IP Rate:** IP20  
**LED type:** MCOB  
**Carton Quantity:** 1

# Ground Spots & Marker Lights



## 3 WAY CONNECTION BOX

**Ordercode:** 142-006  
**EAN:** 8714984008809

**IP Rate:** IP67  
**Carton Quantity:** 1



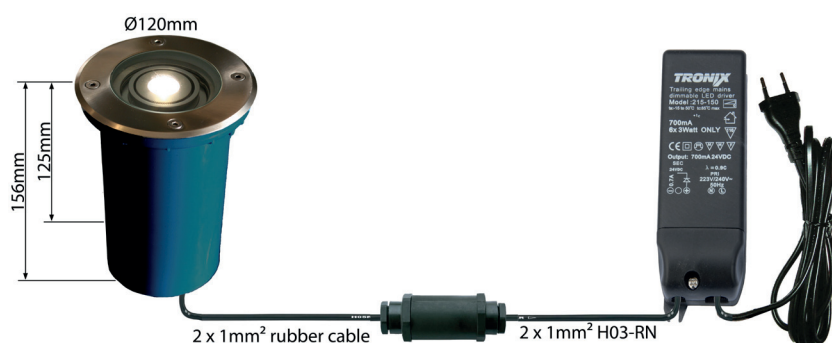
## 2 WAY CONNECTION TUBE

**Ordercode:** 142-007  
**EAN:** 8714984008816

**IP Rate:** IP67  
**Carton Quantity:** 1

Use of the Ground Spot 2.5 Watt with changeable lenses and different available colors (for small trees and walls up to 5 meter):

*The used LED is  
Tronix Universal module 2,5 Watt  
(Chapter 1).*



The ground spot 2.5 Watt is standard available in white, warm white and green and with 40° lens. Other lenses available (15°/25°/60°). Ground Spot comes with 2 meter rubber cable 2 x 1mm, which can be connected to the 2 Way Connection Tube (142-007)

For a good waterproof connection, screw on the gland carefully. From connection tube to driver, you can use 2 x 1mm H03-RN cable, due to the low voltage this cable is safe.

Place a LED driver, for example the 215-111 (20 Watt – 700mA for max 6pcs of 2.5 Watt), to a dry place like a garden house or garage, and bring the cable of each spot separate to the driver and connect them serial to this driver. In this way, driver and LED module are separate, which will extend the lifetime of the both of them.

### EASILY

Everybody can install this kind of system.

### SAFE

Because of the low voltage, very safe for human and animals.

### LONG TIME SERVING

Working this way, the spot will work for years without problems.

### MONEY SAVING

No need to use expensive ground cable

## Aluminium Garden Lighting 230V



### ALUMINIUM POLE 30CM

with 4 x 1 Watt CREE LED

**Ordercode:** 149-300  
**EAN:** 8714984904880  
**Color:** Warm White  
**Input:** 230V  
**Power:** 4 Watt  
**LED Qty:** 4

**Color temp:** 3000K  
**Height:** 30cm  
**Diameter:** 15mm

**Conn Type:** Screw Connection  
**Dimmable:** No  
**LED:** CREE  
**IP Rate:** IP54  
**Carton Quantity:** 2



### ALUMINIUM POLE 60CM

with 4 x 1 Watt CREE LED

**Ordercode:** 149-301  
**EAN:** 8714984904897  
**Color:** Warm White  
**Input:** 230V  
**Power:** 4 Watt  
**LED Qty:** 4

**Color temp:** 3000K  
**Height:** 60cm  
**Diameter:** 15mm

**Conn Type:** Screw Connection  
**Dimmable:** No  
**LED:** CREE  
**IP Rate:** IP54  
**Carton Quantity:** 2



### ALUMINIUM TOWER 60CM

with 1 x 1 Watt CREE LED

**Ordercode:** 149-302  
**EAN:** 8714984904903  
**Color:** Warm White  
**Input:** 230V  
**Power:** 1 Watt  
**LED Qty:** 1

**Color temp:** 3000K  
**Height:** 60cm  
**Diameter:** 8mm

**Conn Type:** Screw Connection  
**Dimmable:** No  
**LED:** CREE  
**IP Rate:** IP54  
**Carton Quantity:** 4



### ALUMINIUM POLE 60CM WITH OVAL LIGHT

with 1 x 3 Watt CREE LED

**Ordercode:** 149-303  
**EAN:** 8714984904910  
**Color:** Warm White  
**Input:** 230V  
**Power:** 3 Watt  
**LED Qty:** 1

**Color temp:** 3000K  
**Height:** 60cm  
**Diameter:** 9mm

**Conn Type:** Screw Connection  
**Dimmable:** No  
**LED:** CREE  
**IP Rate:** IP54  
**Carton Quantity:** 4



### ALUMINIUM SPOTLIGHT 35CM

with 1 x 3 Watt CREE LED

**Ordercode:** 149-304  
**EAN:** 8714984904927  
**Color:** Warm White  
**Input:** 230V  
**Power:** 3 Watt  
**LED Qty:** 1

**Beam:** 40°  
**Lumen:** 162  
**Color temp:** 3000K  
**Height:** 35cm

**Depth:** 9mm  
**Conn Type:** Screw Connection  
**Dimmable:** No  
**LED:** CREE  
**IP Rate:** IP54  
**Carton Quantity:** 4