

13 DOWNLOAD AND APPLICATION SETUP

13.1 WEBSITE DOWNLOAD OF INSTALLATION FILES

Instrument Specs and Index Setup.zip file can be downloaded from the Website <https://instrumentspecsandindex.com> and saved to the computer's Downloads folder.

Instrument Specs and Index

[Home/About](#) [Download](#) [Samples](#) [Terms of Use](#) [Contact](#)

RLH 1

FREE Instrument Specification Forms and Integrated Index

- 200+ Product Driven Device Forms for ALL Industries
- 1500+ instrument Types with 2017-2020 Manufacturers Data
- 80+ Integrated Fields Plus 30 Manual Entry Instrument Index Table
- Dashboard User Interface
- OSHA Compliant "Suitable for Use" Documentation
- Extensive Documentation and Tutorials
- *Macro Enabled Microsoft® Word Forms and Excel Spreadsheet*

[Preview Sample Forms and Listings](#) [FREE Download Now!](#)

- Clicking the “FREE Download Now!” button will immediately start the download process.
- Clicking the Download tab will open with the option to Preview Download and Installation Actions as well as the FREE Download Now button.


Clicking the “FREE Download Now! Button” will open the Google Drive download window.

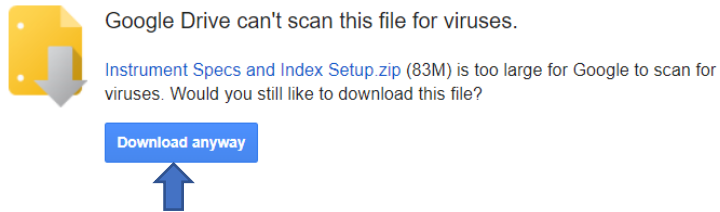
Instrument Specs and Index Setup.exe

Open with


Instrument Specs and Index Setup.e... 3 items

- Installation Readme.docx
- Instrument Specs and Index Setup.exe
- Quick Start Tour.docx

Clicking the download icon  will open the Google Drive can't scan file that is too large window.

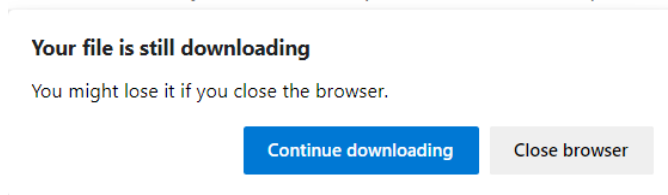


Clicking the “Download anyway” button will download the *Instrument Specs and Index Setup.zip* file.

 **Note:** Depending upon what web browser is being used, the download progress may be displayed; above the download window, below the window or inferred by a flashing browser icon.

The Google Drive download window can be closed.

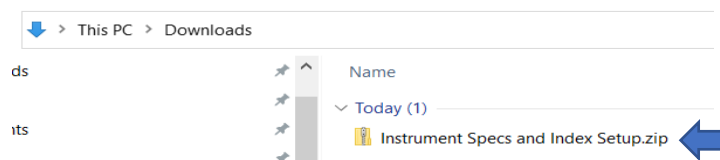
 **Note:** If the download is not complete a browser warning message will appear.



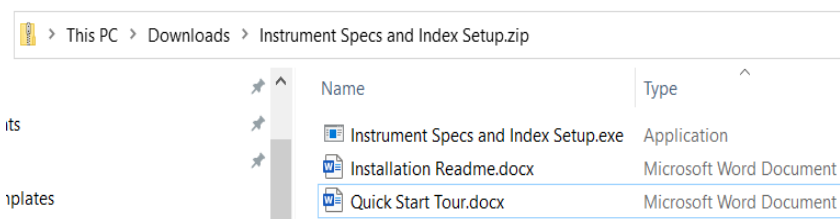
Clicking the “Continue downloading” button will allow completion of the download.

13.2 WORKING WITH THE DOWNLOADED INSTALLATION FILES

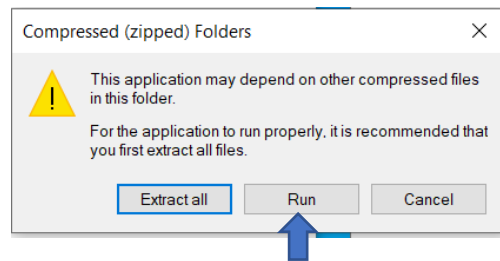
- Navigating to the computer’s Downloads folder will allow access to the *Instrument Specs and Index Setup.zip* file.



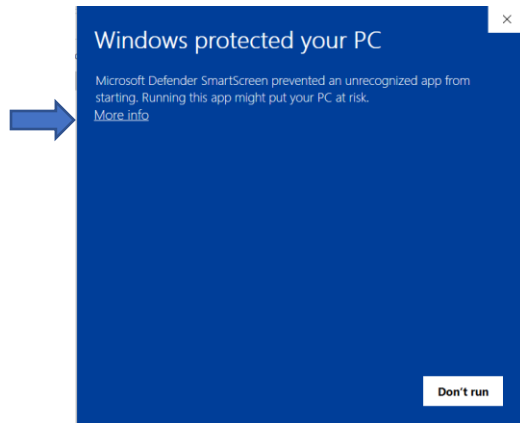
- Double clicking, or right mouse click and choose the “open” menu option of the *Instrument Specs and Index Setup.zip* file, will open the compressed file and display its content.



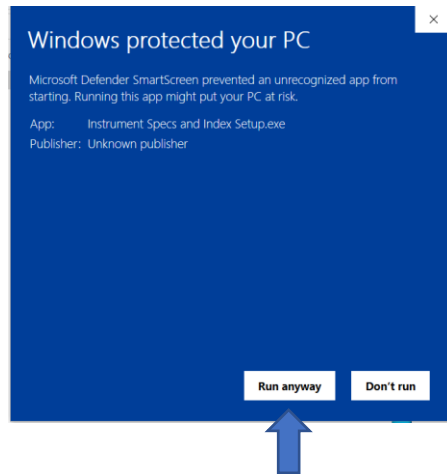
- This *Installation Readme.docx* file can be opened to preview the installation actions or copied to a temporary location for later referencing.
- The *Quick Start Tour.docx* file is a step-by-step guideline that is highly recommended for users that do not have previous experience with this application. It is recommended that new users copy and paste this file to the Desktop for use until they become familiar with how access the file from within the Dashboard interface.
- Double clicking on the *Specs and Instrument Index Setup.exe* file, will open the Compressed (zipped) folders action window.



This information warning does not apply to our application, therefore clicking on the “Run button” will open the “Windows Protected your PC” window.



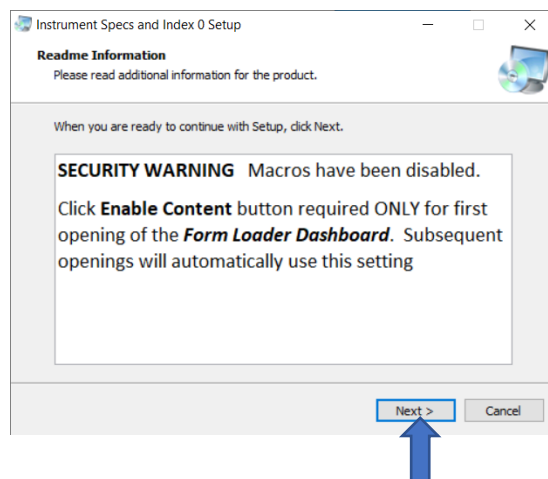
This well intended warning does not apply to our application, therefore Clicking the “More info” icon will add our desired option to “Run anyway”.



- 📌 Note: If your computer has an additional third-party virus protection, then you will get an additional window offering the option to “Run this program anyway”.
- 📌 A warning message about unknown source material may appear depending on computer operating system and virus protection software.
- 📌 Click to proceed with installation.


13.3 INITIAL INSTALLATION

After all the virus protection software has been acknowledged, the Instrument Specs and Index Setup “Readme information” window will open.

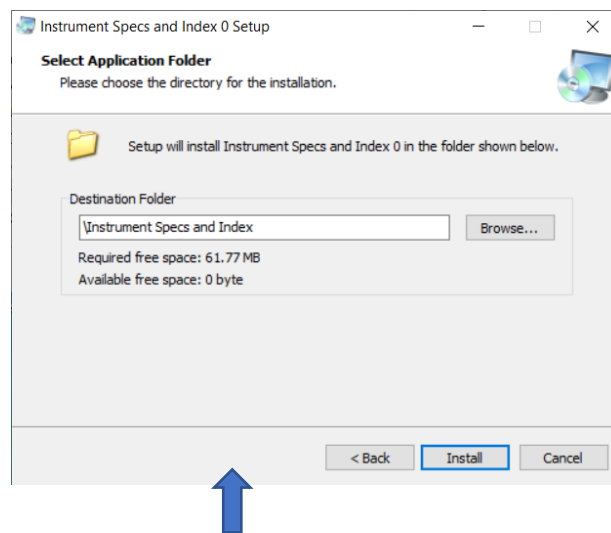


This information window is warning that the application files include Microsoft® macros that will be disabled during installation, but will need to be enabled by the user, the first time that the application is run.

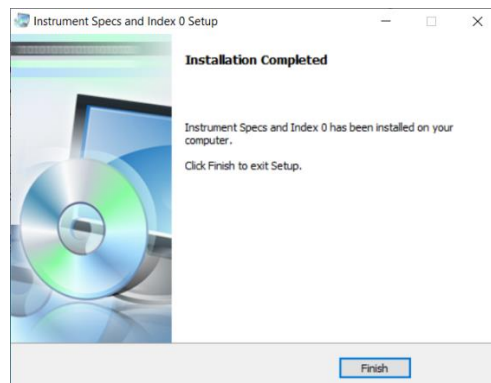
- Clicking the Next button will open the “Select Application Folder” window.

 Note: These Microsoft® Word specification forms are designed for electronic file editing and integration with Microsoft® Excel and external software applications, using integrated XML technology. For their effective use, all files need to be located at a drive and folder location accessible to all intended internal project users.

- If a network location is appropriate, then use the Browse button to navigate to that drive/folder location.
- The default installation is in the root directly of the active drive/folder. This should be appropriate because there are no “Program Files” present in this application. (Microsoft® Word and Excel are the associated application program files)



- Click the **Install** button to proceed with copying the files to the drive
- The Installation complete window will display.



- Click the **Finish** button to return to your Desktop and verify the application shortcut.



- The Windows Start list will also display the Instrument Specs and Index program and its uninstall program.