

Basset Creek Estates Homeowners Association, Inc.

Community Fencing Plan

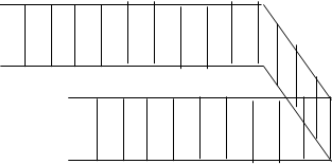
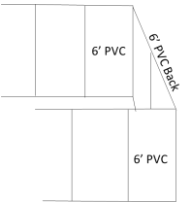
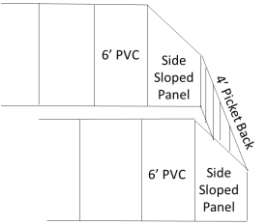
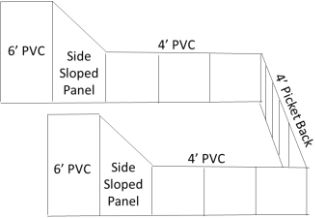
An Addendum to the
Book of Standards for
Community Living

Revision 1
Effective October 15, 2019

Contents

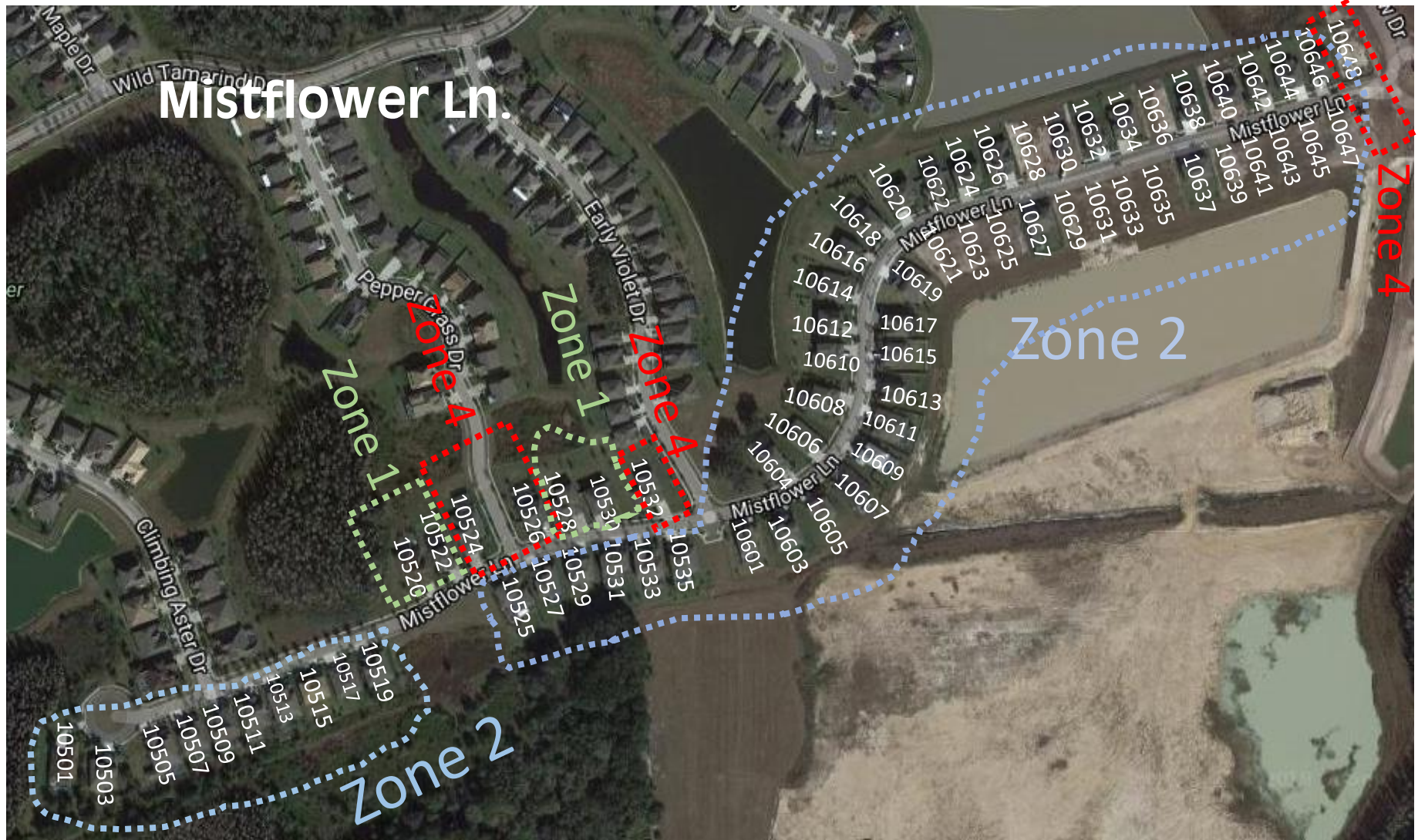
- Community Fencing Plan, including:
 - Approved Fencing Per Fencing Zone.
 - Satellite view of Fencing Zones – by Street.
 - Summary of Revisions

Fencing Matrix

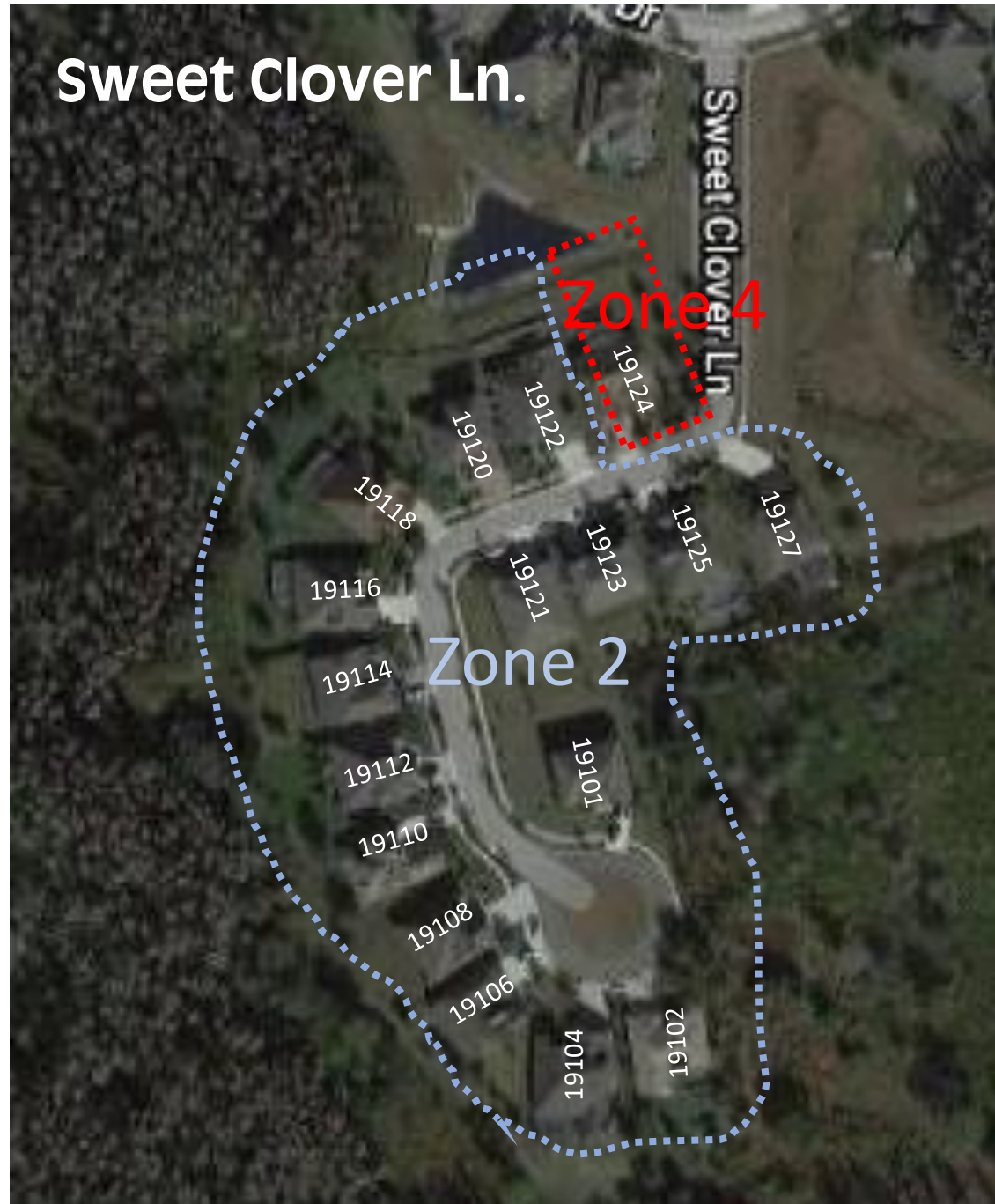
Approved Fencing Per Zone	Zone 1	Zone 2	Zone 3	Zone 4
	View Corridor	Non-View Corridor	Non-View Corridor	Corner Lot or Unusually Shaped Yards (Approved subject to review)
 <p>4' Black Aluminum Fence</p>	✓	✓	✓	✓
 <p>6' White PVC Fence</p>			✓	✓
 <p>6' side panels slope down panel on sides 4' back fence</p>		✓		✓
 <p>6' side panels slope down panel on sides 4' side panels 4' back fence</p>	✓			
<p>Stand-alone Privacy Fence</p> <p>Conditional allowance for privacy issues that don't result in interference problems.</p>				✓

Fence Zoning by Street

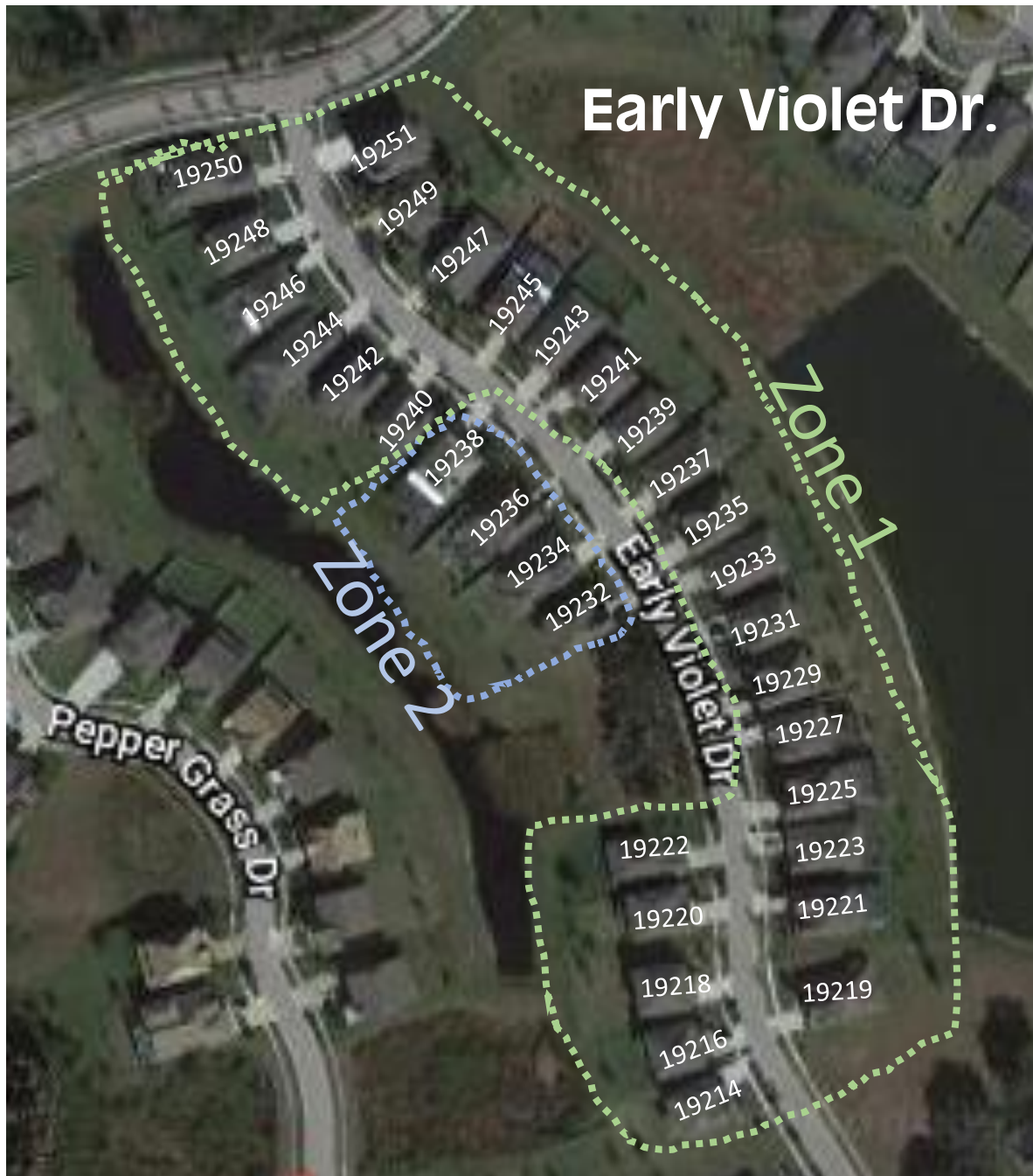




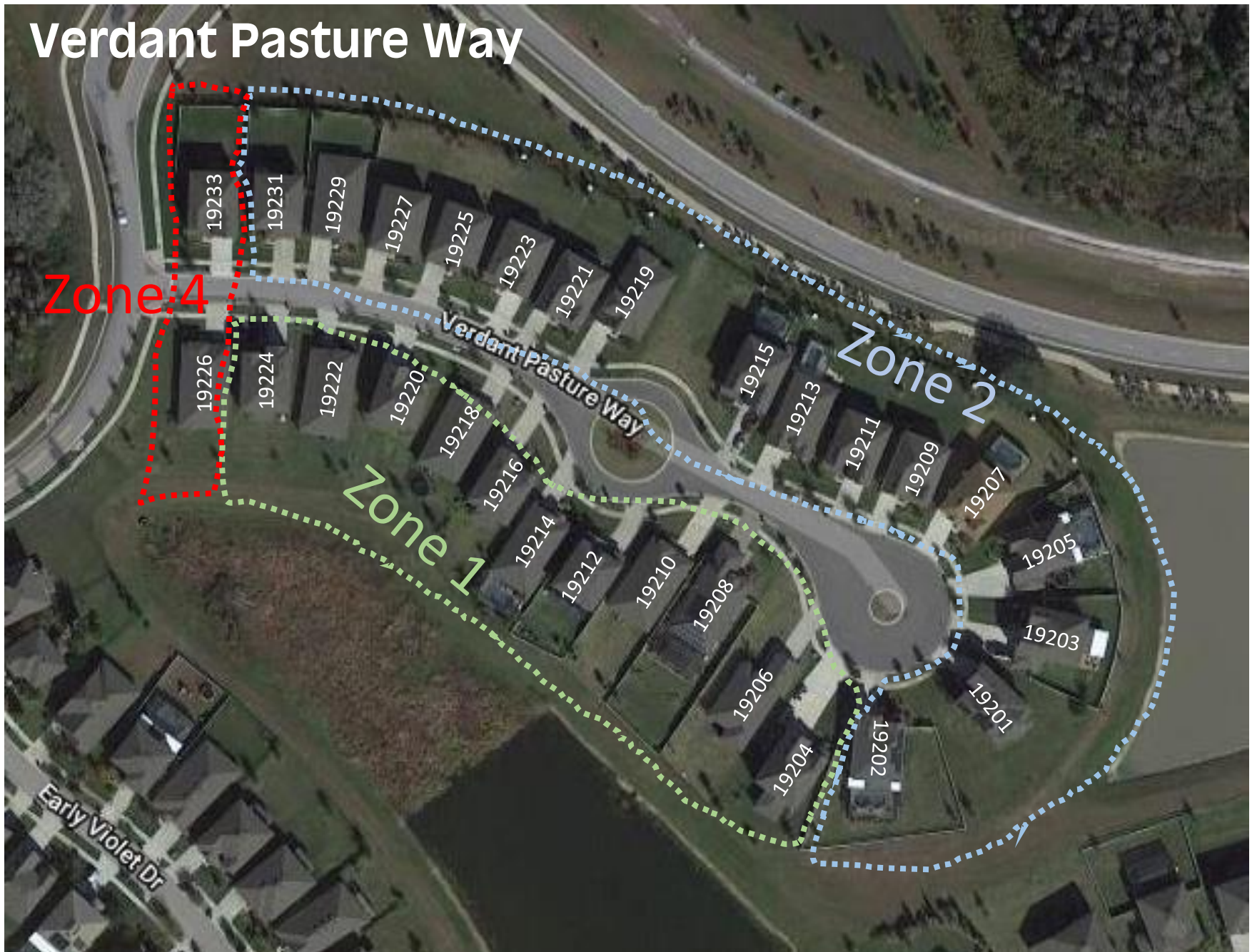
Sweet Clover Ln.







Verdant Pasture Way







Summary of Revisions

- Revision 1, issued 10-15-19
 - Water Maple Drive: Previous Zone 2 changed to Zone 3.