



Diocese of Chester



**STOCKPORT PARISH CHURCH**  
**St Mary's in the Marketplace**  
Churchgate Stockport SK1 1YG  
Tel: 0161 480 1815

e-mail: [st.marysstockport@gmail.com](mailto:st.marysstockport@gmail.com)  
www. [stmarysinthemarketplace.com](http://stmarysinthemarketplace.com)

#### Service times at St Mary's

**Sunday: 10:30am Holy Communion or  
Morning Prayer**

Normally the first and third Sunday is Holy Communion with Morning on the second and fourth.

**Tuesday: 10.00am Holy Communion  
12.15pm Lunchtime Service**

Wedding, Baptism, Funeral and other services by arrangement.

**St Mary's and the Nave Café is open – Tuesday, Thursday, Friday & Saturday from 9.00am – 3.00**



## STOCKPORT PARISH CHURCH

### St Mary's in the Marketplace



Parish Magazine

February 2017

50p

DIARY FOR FEBRUARY 2017			
Sunday	5 <sup>th</sup> February	Holy Communion Rev David Parker	10.30am
Tuesday	7 <sup>th</sup> February	Holy Communion Rev Andy Williams	10.00am
		Lunch-time Service Rev Canon John Briggs	12.15pm
Thursday	9 <sup>th</sup> February	PCC Meeting (St Mary's)	7.30pm
Sunday	12 <sup>th</sup> February	Morning Prayer Rita Waters	10.30am
		Sunday Lunch at the Nave Cafe	1.00pm
Tuesday	14 <sup>th</sup> February	Holy Communion Rev Ken Kenrick	10.00am
		Lunch-time Service Rev Canon John Briggs	12.15pm
Sunday	19 <sup>th</sup> February	Holy Communion Rev David Parker	10.30am
		Baptism Rev David Parker	12.00
Tuesday	21 <sup>st</sup> February	Holy Communion Rev Andy Williams	10.00am
		Lunch-time Service Rev Canon John Briggs	12.15pm
Sunday	26 <sup>th</sup> February	Morning Prayer Lynn Keeley	10.30am
Tuesday	28 <sup>th</sup> February	Holy Communion Rev Andy Williams	10.00am
		Lunch-time Service Rev Canon John Briggs	12.15pm
		Shrove Tuesday Pancake Party at the Nave Cafe	5.00pm

**Going.... Going... and now it has actually gone!**



The ramp at the West Doors has been “going” for quite awhile in that rot has been setting underneath out of sight. Our last inspection showed that it was nearing the end of its days and we have now (for safety reasons) had to remove it. It was not of course our official disabled entrance, this being at the side entrance. It was a lovely gift from our former contractors and has served us well.

Seen above, our friends from Stockport Heritage Trust taking it away ready for disposal.

## **Nave Café**

The Nave Café, as most of you will know, is run by the Parochial Church Council of St Mary's in partnership (in part) with Pure Innovations (Stockport).

When working out how much "profit" the café is making, we take two figures into consideration (a) the amount taken over the counter and (b) cost of the purchase of food. We exclude the amount spent on electricity, water services and other associated costs. We also exclude the cost of replacing equipment.

We rely on a steady weekly income from the café and thank everyone who supports us. All the income received is retained by St Mary's towards our general upkeep etc. A wonderful £10,700 "profit" or thereabouts this last year with Nave Café Event "profit" of around £941. It's a good little "earner" although it needs to be more – of course!

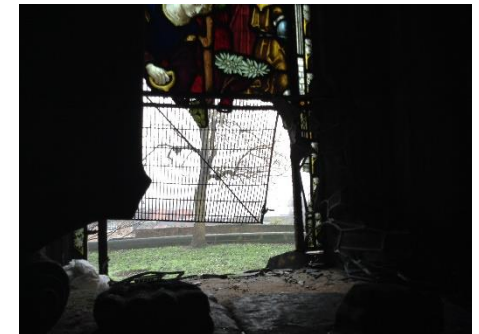
A dark cloud! Well may be just a little one!! It's not official until we are audited and issue the year-end accounts, but at first sight the figures seem to prove, what I suppose we have suspected for some time, that our takings are down on last year (weekly averages) and that we are not quite generating the amount of sales that we would have liked to have achieved during the last twelve months. To say that it is a little depressing (considering the amount of work it takes to keep the Nave Café open) is perhaps an under-statement, for us and for Pure Innovations, but we will be addressing these issues and look forward to a profitable year ahead and a revision of our "Business Plan" to attract new custom.

**Please continue to support us - and spread the word.**

SMH

## **Burglary at St Mary's**

This is not quite what you want to deal with at the beginning of a new year but once again we have been the "victim of crime" with not one but two mindless attacks on our beautiful historic church. We have substantial damage to two of our stained glass windows, a broken donations box, damage to the external door off the choir vestry and a small amount of cash has been taken, along with keys that were in a desk drawer. Time will tell if anything else is missing. Stockport Heritage Centre suffered more damage than us the second time around, with the removal of equipment thought to have been safely locked away.



My sincere thanks to Greater Manchester Police, New Charter (for GMP), Stockport Council, Carillion and Stockport Homes, all of which were so helpful making emergency arrangements to secure the premises etc. on both occasions. We will be reviewing our security arrangements, needless to say, in liaison with our Insurers and Chester Diocese. Thank You – for your support at this sad time.

SMH



### Shoe Boxes For Operation Christmas Child 2016



Thank you to all congregation and friends of St. Mary's who gift-filled their own shoe boxes, made items for the boxes or provided things for extra boxes.

Three huge lorries each with over 10,000 boxes were loaded for Albania, Romania and Ukraine. All the other boxes were loaded onto

two lorries which were going to Romania and Serbia.

We processed and packed nearly 27,000 boxes at the Ashton warehouse for the special children.

It was hard work at the warehouse but rewarding processing so many lovely boxes which will give love and hope to these children.

Thank you all for once again supporting this Christmas project

Margaret Forster



### Women's World Day of Prayer 2017 – Am I being Unfair to You?

**The Stockport Centre Group Service will be at 2pm on Friday 3<sup>rd</sup> March 2017 at St Joseph's RC Church, Tatton Street. Do come and join us!**

This is one of over 5000 services held in the UK on that day, and the 2017 service has been written by the Christian women of the Philippines, and translated into 1000 different languages and dialects to be used throughout the whole world. It starts at sunrise over the island of Samoa on 3<sup>rd</sup> March, and continues till sunset of the coast of American Samoa.

In 2013, Typhoon Haiyan – named locally as Yolanda – struck the Philippine Islands in the western Pacific Ocean. This is mentioned in the service and you will also hear stories of a girl, a mother and an older woman, recounting their experiences, hopes and fears. The focus of the service is the Bible Story of the workers in the vineyard: Matthew 20 v 1-16. This year, instead of a talk, there will be a thought-provoking reflection on the themes illustrated on the cover of the service booklet.

The Stockport Committee represents many of the local churches, Anglican, Methodist, Roman Catholic and Salvation Army – representatives from all denominations are more than welcome to be part of this truly ecumenical event.

Catriona Smith (Secretary of the Stockport Centre Group)

## Thank You – “Planned Givers”

Be it a brown envelope or a bank mandate your regular contribution to the coffers of St Mary’s on a weekly or monthly basis is greatly received. Please take this as our official “acknowledgement” for supporting the work of St Mary’s and where possible for “gift-aiding” your contributions using our “Planned Giving” system.

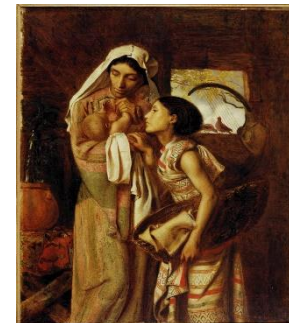
For 2016 we had 11 regular brown envelope users and 13 bank mandates in place. Also one-off cheques are received and regular donations using our “white” gift aid envelopes – whatever your preferred option(s) – thank you very much.

**Anyone wishing to join our planned giving scheme, spare envelopes are available for 2017 or better still why not ask your bank to made regular payments on your behalf.** Either way, your gift can be “gift aided” on completion of the appropriate documentation. The beauty of the bank mandate is the simplicity of the whole system (especially for the Treasurer with the knowledge that the money will be in the bank on a specific date, most helpful planning cash-flow).

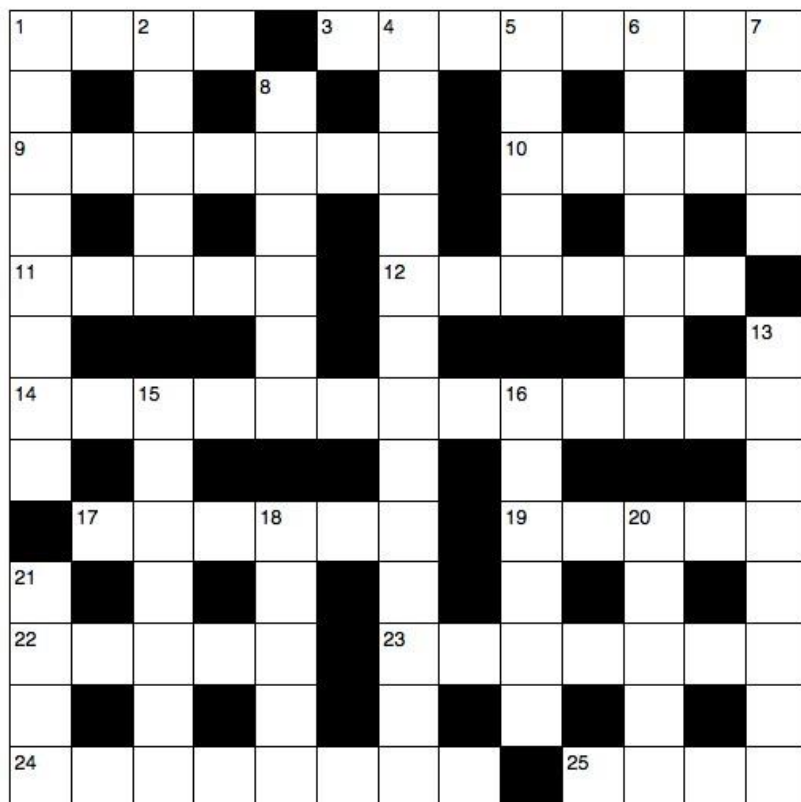
Of course we still like “cash” – and the decision to take a Tuesday lunch-time collection most beneficial. Thank You (Sunday and Tuesday) for your gifts of money to St Mary’s.

SMH

## **God in the Arts** - *Michael Burgess considers Moses and his sister, Miriam, as painted by the Pre-Raphaelite artist, Simeon Solomon.*



One of the first stories that impressed me at Sunday School was about Moses as a baby placed in a basket into the river Nile and rescued by Pharaoh’s daughter. Moses grew up to become a great leader of God’s people in the Exodus. But there was one person whose courage and ingenuity was vital in his survival as a baby – his sister, Miriam. She is there with her mother in this tender scene painted by Simeon Solomon, the Pre-Raphaelite artist, in 1860. Jochabed cradles her son, and Miriam looks on with care and concern as she holds the basket that will keep her brother safe. Birds on the window ledge, a potted plant and a lyre provide a gentle background to the drama that will soon unfold. Like Noah, whom we looked at last month, the story of Miriam is linked to water: helping to save Moses from the waters of the Nile; with the people as the Red Sea parted; and the spring that came up from the earth to give abundant water after her death. All that is still to come when we look at this painting. Here Miriam is about to take her brother and the basket to the Nile to begin the journey that will eventually take God’s people from slavery and oppression to new life in the promised land. The Exodus is an inspiring pilgrimage of faith and trust, and Miriam played her part in it as a courageous leader of the women. To celebrate, she sang a hymn. ‘Then the prophet Miriam took a tambourine in her hand; and all the women went out after her with tambourines and with dancing. And Miriam sang to them, ‘Sing to the Lord, for he has triumphed gloriously; horse and rider he has thrown into the sea.’ (Exodus 15). It is a story that can inspire us to sing and even dance when we recall this victory at each Easter.



**Across**

- 1 Salary (Isaiah 19:10) (4)
- 3 Question Jesus asked of those healed of leprosy, 'Were not all ten — ?' (Luke 17:17) (8)
- 9 Wide, elevated level area of land (Joshua 13:9) (7)
- 10 'So you also must be — , because the Son of Man will come... when you do not expect him' (Matthew 24:44) (5)
- 11 '[He] said to the man, "Stretch out your hand." He — — , and his hand was completely restored' (Luke 6:10) (3,2)
- 12 'Who has gathered up the wind in the — of his hand?' (Proverbs 30:4) (6)

- 14 Not born again (13)
- 17 'Again and again he — the same sacrifices, which can never take away sins' (Hebrews 10:11) (6)
- 19 Mails (anag.) (5)
- 22 'He — — here; he has risen' (Matthew 28:6) (2,3)
- 23 Defeated (Judges 20:43) (7)
- 24 Soldiers' quarters (Acts 21:34) (8)
- 25 'Pillars of marble' were how the Beloved described those of her Lover (Song of Songs 5:15) (4)

**Down**

- 1 Totally destroyed (Genesis 7:23) (5,3)
- 2 What the Philippian jailer was told to do with his prisoners Paul and Silas (Acts 16:23) (5)
- 4 Object of ridicule (Job 12:4) (8-5)
- 5 In most years, the month in which Easter falls (5)
- 6 For example, Caesarea, Joppa, Tyre, Sidon (7)
- 7 '[Jesus] was in the desert for forty — , being tempted by Satan' (Mark 1:13) (4)
- 8 'Hallelujah! Salvation and glory and power — to our God' (Revelation 19:1) (6)
- 13 Mend dots (anag.) (8)
- 15 Purifier (Malachi 3:3) (7)
- 16 Attacked (1 Samuel 27:8) (6)
- 18 The good Samaritan to the innkeeper: 'When I return, I will reimburse you for any — expense you may have' (Luke 10:35) (5)
- 20 How Matthew described the crowds who followed Jesus (Matthew 4:25) (5)
- 21 For example, one of 25 Across (Judges 19:29) (4)

*The Rev Paul Hardingham considers Love...* **How will you express love this Valentine's Day?**

Valentines' Day reminds us of the importance of expressing our love to those close to us. But how can we go beyond simply flowers and a card? Jesus says: 'A new command I give you: Love one another. As I have loved you, so you must love one another' (John 13:34). How can we express love in our everyday relationships like Jesus i.e. spouse, children, neighbours or work colleagues?

**Listening** We need to listen to others, just as Jesus did. He asked questions of people and waited for them to process their answer. According to James, 'everyone should be quick to listen, slow to speak and slow to become angry' (James 1:19). How well do we listen to others? When with somebody, do we find ourselves already thinking of what we want to say before they've finished speaking? Listening takes time; you can't rush it!

**Touching** Jesus reached out to touch the untouchables in his world, including lepers, the sick and children. This was completely out of character for rabbis of his day. One survey has suggested that we all need at least 8-10 meaningful touches a day to maintain emotional health! A warm handshake, touch on the arm or hug can be of real value. Of course, it should be appropriate touch – helpful for the other person, not just for ourselves. Speaking Jesus' conversation was always full of grace and truth (John 1:14). Do we speak words of grace, by offering comfort, giving encouragement or expressing care and concern? However, we should also be ready to speak words of truth, in asking for forgiveness, seeking reconciliation or addressing conflict. As Paul urges us, don't avoid: 'speaking the truth in love'.

Where is the challenge for us in expressing love this Valentine's Day?

*David Winter considers the major impact of the famous Dead Sea Scrolls.* **A Priceless Find – by accident!**

70 years ago this month a couple of shepherds in the hills above Qumran near the Dead Sea idly threw a stone into what they thought was an empty cave. When they heard the sound of smashing pottery they searched inside, and found the most important biblical discovery of the century.

Their stone had led them to what became known as the Dead Sea Scrolls, manuscripts of the entire Hebrew Bible except for the book of Esther, stored in clay vessels. The scrolls were the work of a religious community called the Essenes, who lived near that site before and during the life of Jesus.

As scholars slowly unraveled them – and that task took decades - they discovered that they were handling manuscripts of the Bible which were hundreds of years older than any we had previously possessed. Most of the biblical manuscripts on which our translations had previously been based were copies of copies, carefully crafted in monasteries over the centuries by people dedicated to preserving the sacred text. But inevitably, in the process, there were occasional slips in the copying, and at times it's obvious that those who were doing it didn't understand the words they were copying. So, in February 1947, the world had access to a much older and therefore more accurate record of the Jewish Scriptures – the Bible of Jesus and the first Christians. The most remarkable thing is actually how few 'mistakes' there were, seeing the centuries of copying – and not one that seriously affects our fundamental understanding of the Bible. Those two shepherds 70 years ago ensured that we today have a Bible text which is as close to the original as one could ever hope to get. I'm glad they threw the stone into the right cave!

## Dates for your diary:

Sunday Lunch at the Nave Café

12 February 1pm

Bruschetta

Stuffed Chicken Breast wrapped in Pancetta

Sweet Selection

Shrove Tuesday “Pancake Party”

at the Nave Café

Tuesday, 28 February 5pm

Pancakes with a variety of fillings

Saturday “High Tea” at the Nave Café

4 March 5pm

A main course and selection of sweet delights

Saturday, 18<sup>th</sup> March

Concert: The Manchester Chorale (details to follow)

Sunday Lunch at the Nave Café

with an Irish Theme

19 March 1pm

Scallion Champ Soup

Guinness Beef Stew with Colcannon

Sweet Selection

Sunday Lunch at the Nave Café

for St George’s Day

23 April 1pm

Prawn Cocktail

Roast Pork with Sage & Onion Stuffing

Sweet Selection

## A Milestone in our History By Megan Carter

From 6th February 1952

For threescore years and five,  
Our Queen has ruled this land of ours  
With love, devotion and grace besides.

Her coronation the following year,  
With the Oath and the oil of consecration,  
As St. Edward’s crown was placed on her head  
Our Queen was anointed to rule this nation

Tudor Elizabeth, Victoria too  
Great queens that ruled this island race,  
But as the longest reigning monarch  
It’s Elizabeth II that takes this place.

Loved and revered throughout the world,  
Fulfilling her duties with visits of state,  
Wherever she travels her poise and her presence  
Has served to make Great Britain – great.

### Crossword answers:

**ACROSS:** 1, Wage. 3, Cleansed. 9, Plateau. 10, Ready. 11, Did so. 12, Hollow. 14, Unregenerated. 17, Offers. 19, Islam. 22, Is not. 23, Overran. 24, Barracks. 25, Legs.

**DOWN:** 1, Wiped out. 2, Guard. 4, Laughing-stock. 5, April. 6, Seaport. 7, Days. 8, Belong. 13, Oddments. 15, Refiner. 16, Raided. 18, Extra. 20, Large. 21, Limb.



## St Valentine's Day

There are two confusing things about this day of romance and anonymous love-cards strewn with lace, cupids and ribbon: firstly, there seems to have been two different Valentines in the 4th century - one a priest martyred on the Flaminian Way, under the emperor Claudius, the other a bishop of Terni martyred at Rome. And neither seems to have had any clear connection with lovers or courting couples.

So why has Valentine become the patron saint of romantic love? By Chaucer's time the link was assumed to be because on these saints' day -14 February - the birds are supposed to pair. Or perhaps the custom of seeking a partner on St Valentine's Day is a surviving scrap of the old Roman Lupercalia festival, which took place in the middle of February. One of the Roman gods honoured during this Festival was Pan, the god of nature. Another was Juno, the goddess of women and marriage. During the Lupercalia it was a popular custom for young men to draw the name of a young unmarried woman from a name-box. The two would then be partners or 'sweethearts' during the time of the celebrations. Even modern Valentine decorations bear an ancient symbol of love - Roman cupids with their bows and love-arrows.

There are no churches in England dedicated to Valentine, but since 1835 his relics have been claimed by the Carmelite church in Dublin.

## The Nave Café

### Birthday Buffet

It was a Happy Birthday to Anne Mather recently and a huge thank you from the Nave Café for allowing us to provide a celebration lunchtime buffet.

In addition to our normal café service we would be delighted to hear from anyone who would like to celebrate a special occasion such as this at St Mary's.

We are open to suggestions to expand our café operation - coming soon a local walking group will be arriving for a "Hot Pot" lunch and later

in the Spring we will be catering for a symposium to be held in Church. We are happy to discuss funeral teas, baptism celebrations, wedding receptions, corporate events etc. Just give us a call! AND – don't forget our own programme "Sunday Lunch at the Nave Café" and event afternoons/evenings.



**Sunday Lunch at the Nave Café**

**12<sup>th</sup> February 2017**

**1.00pm**

Bruschetta

:

Stuffed Chicken Breast wrapped in Pancetta  
with seasonal vegetables

:

Sweet Selection

:

Tea/Coffee

Please book in advance

£15.00

All proceeds to St Mary's in the Marketplace.

---

**Your invitation**

**to our Shrove Tuesday "Pancake Party"**

**at the Nave Café**

**Tuesday, 28 February 5pm**

**Pancakes with a variety of fillings**

RSVP for catering purposes – add your name to the list.

There is no fixed charge for this event – donations appreciated.

All proceeds to St Mary's in the Marketplace.

**Tuesday Lunch-time service** **12.15pm**

**A new way of living - The Sermon on the Mount**

**Rev Canon John Briggs**

**February 7<sup>th</sup>**

People in the middle

How we serve (Matthew 5: 9-12)

**February 14<sup>th</sup>**

Question Time

**February 21<sup>st</sup>**

People who are different (Matthew 5: 13)

**February 28<sup>th</sup>**

People who get noticed (Matthew 5:14-16)

**March 7<sup>th</sup>**

The Law filled out (Matthew 5: 17-26)

**March 14<sup>th</sup>**

Love without limit (Matthew 5: 38-48)

**March 21<sup>st</sup>**

Prayer without pretending (Matthew 6: 11-15)

**March 28<sup>th</sup>**

Free from worry (Matthew 6: 19-34)

**April 4<sup>th</sup>**

Big choices (Matthew 7: 1-14)

**April 11<sup>th</sup>**

Solid ground (Matthew 7: 15-29)