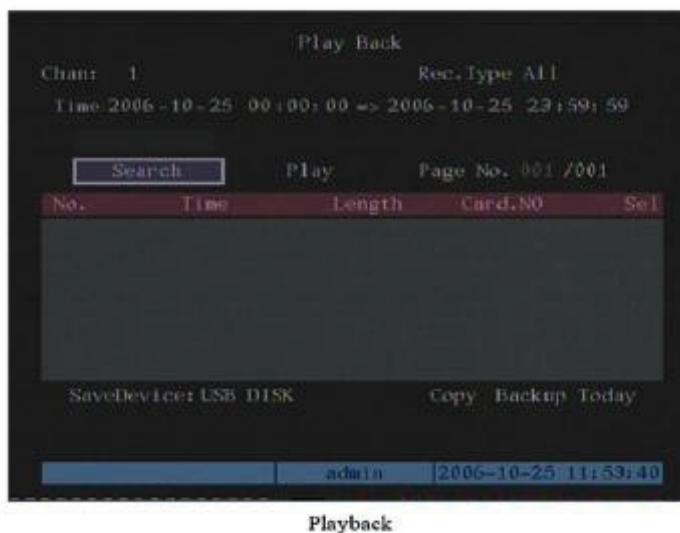


4.4 Playback



The user must have playback rights. In preview mode press the PLAY key, select username and password to enter playback interface. In menu mode press the PLAY key and enter playback interface directly.

Note that this DVR only supports one channel playback.

Chan: Use \uparrow or \downarrow keys to select one channel.

Rec. Type: Use \uparrow or \downarrow keys to select recorded files. There are 5 file types that can be selected:

All	=	All files
All Time	=	All schedule recordings
Motion Detect	=	Motion detection files
Alarm	=	Alarm recorded files
Manual	=	Manually recorded files

Time: Enter the “From and To” date and time selected

Search: Search the matched recorded files and display them in list box. If no files are found a corresponding dialogue box is displayed.

Play by Time: Playback the recorded channel based on time section.

Select Page: In the file list box, only 8 files are displayed per page. If the selection covers more than 8 files these can be seen by selecting further pages. Up to 500 pages containing a maximum of 4000 files can be searched at one time. Use the numeric keys or the up and down arrow buttons to selected the required page.

File List Box: This lists the matched files. File start time and file size are displayed. Use the up and down arrow keys to move the scroll bar to select file.

Backup Devices: You can select USB memory stick, USB HDD or USB CD-R/W to backup files.

Copy: Starts backup

Backup Today: Backup all recorded files from today.

There are two kinds of playback mode. Search and playback file, and playback by time.

Search and playback file: In the playback interface you can select only one channel playback but using the client software you can playback up to 4 channels.

Select channel, record type and time from and to. Now click on Search and the files found for that period will be listed in the matched files list. If you click on one file and then press the PLAY key the recorded file will play back. If the DVR cannot find matched files a failure dialogue will be displayed.



1. Adjust play progress backwards or forwards
2. Adjust play speed. Normal = 1x. Decrease to 1/2x, 1/4x, 1/8x and single frame. Increase to 2x, 4x, 8x and MAX.
3. Pause/continue. If setting single frame press Enter to display each frame.
4. Audio
5. Copy segment. Press EDIT to start copy.
6. Go backwards.
7. Select enlarged segment for viewing.
8. Press the ESC button to return to preview mode.

NOTE: When DVR is busy and you select high speed playback you may find actual speed can be reduced.

4.5 Backup Recorded Files

NOTE: The user must have the necessary playback rights. Before starting the backup process ensure that the backup device is connected to the unit.

In playback mode you can backup recorded files. In preview mode press the PLAY key and log in to enter the playback interface. In menu mode just press the PLAY key.

Backup intraday recorded files (Backup Today)

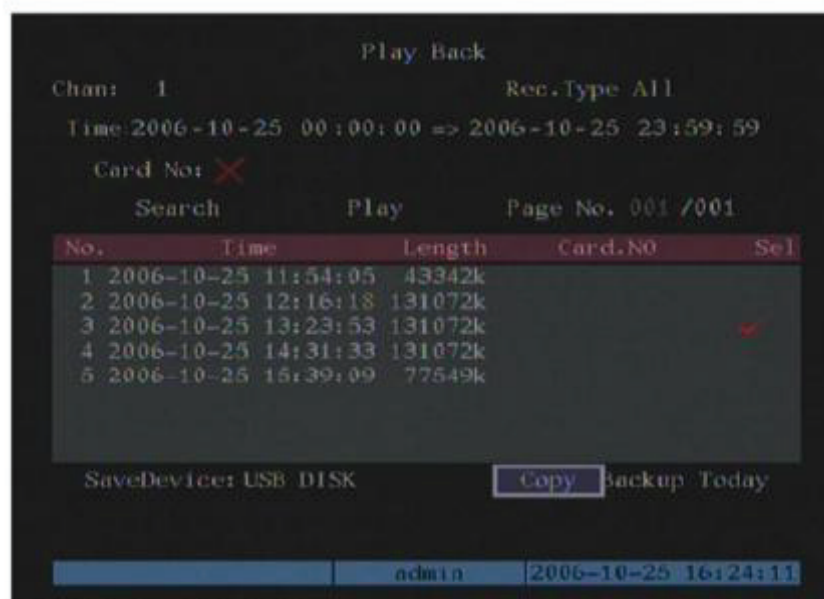
This option allows the user to backup all recorded files for all channels for one day. Just select Backup Today and press the Enter key. A dialogue device will display the backup status.

If backup device is not connected correctly or the DVR does not detect the unit, the following dialogue box will be displayed.



Backup Process

1. In playback mode select one channel and record type and then input the time selection. Now press the Search key and press Enter. The DVR will now start to find and list the matched files.



2. In the file list box use the up and down arrow key to move the scrollbar. At the required file press the Enter key to select it. The file will be

ticked. You can use the same method to select other files to backup. When you have selected the files to backup go to the next step.

3. At this point select the required backup device. You can select from the following devices: USB memory stick or USB CD-R/W.
4. Press the Save button and press the Enter key to start backup. When backup starts the corresponding message box will indicate the result.

Backup video segment

An additional facility is available to backup parts of an incident. This may be useful when there is a part of the recording not required. The following steps need to be followed:

1. Start playback or select playback by time.
2. Press the Edit key to start selecting the current playback image and press Edit again to stop selecting the segment required.
3. Repeat step 2 to select up to 30 segments maximum.
4. On completion of the selection of segments press the ESC key and a dialogue box will be displayed. If you press the Confirm key the DVR will start to backup the selected segments. If you press the Cancel button the DVR will abort the backup.