

motor mounting

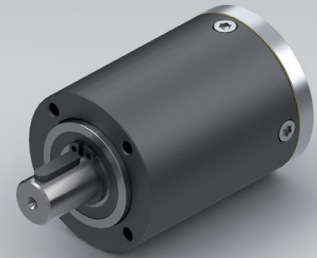


Standard scope of delivery Gearbox lubricated for duration of service life, dust-proof package, motor pinion, mounting screws, paper gasket and assembly instructions (adapter plate optional).

Customized versions also available for small quantities.

Stainless steel version on request.

PLANETARY GEARBOX GPL042K



		1-STAGE		2-STAGE		3-STAGE	
Ratio i:1	Max. motor shaft-ØD	Ratio i:1	Max. motor shaft-ØD	Ratio i:1		Max. motor shaft-ØD	
				49	8	56	8
3.5	8	12.25	8	64	8	184	8
4	8	14	8	70	8	235.11	8
5	6	16	8	80	8	38.33	6
6	4	20	8	100	8	46	4
7.67	3	24	8	120	8	58.78	3
		25	6	144	8	352.67	4
		30	6	184	8	450.63	3

Rated torque continuous	Type Standard	Type R	Nm	0.7	4	15
Rated torque intermittent	Type Standard	Type R	Nm	1.4	8	30
Rated torque continuous	Type V	Type S	Nm	1.4	8	15
Rated torque intermittent	Type V	Type S	Nm	3	15	30
Max. efficiency at rated torque			%	90	85	80
Average backlash at no load	Type Standard	Type V	arcmin ≤	20	35	50
Average backlash at no load	Type R		arcmin ≤	12	20	30
Average backlash at no load	Type S		arcmin ≤	8	12	15
Weight without adapter plate			g	315	400	485
Dimension L			mm	38	50.5	63
Dimension A			mm		7.5	
Dimension B			mm		20.5	
Max. radial load	F _R	8.5 mm from shaft end	N		250	
Max. axial load	F _A		N		200	
Max. continuous rated speed at drive			min ⁻¹		5000	
Max. intermittent rated speed at drive			min ⁻¹		8000	
Temperature range			°C		-25 / +90	

Type V = heavy duty version | Type R = reduced backlash version | Type S = low backlash version

Changes reserved © GYSIN AG | 05/2015