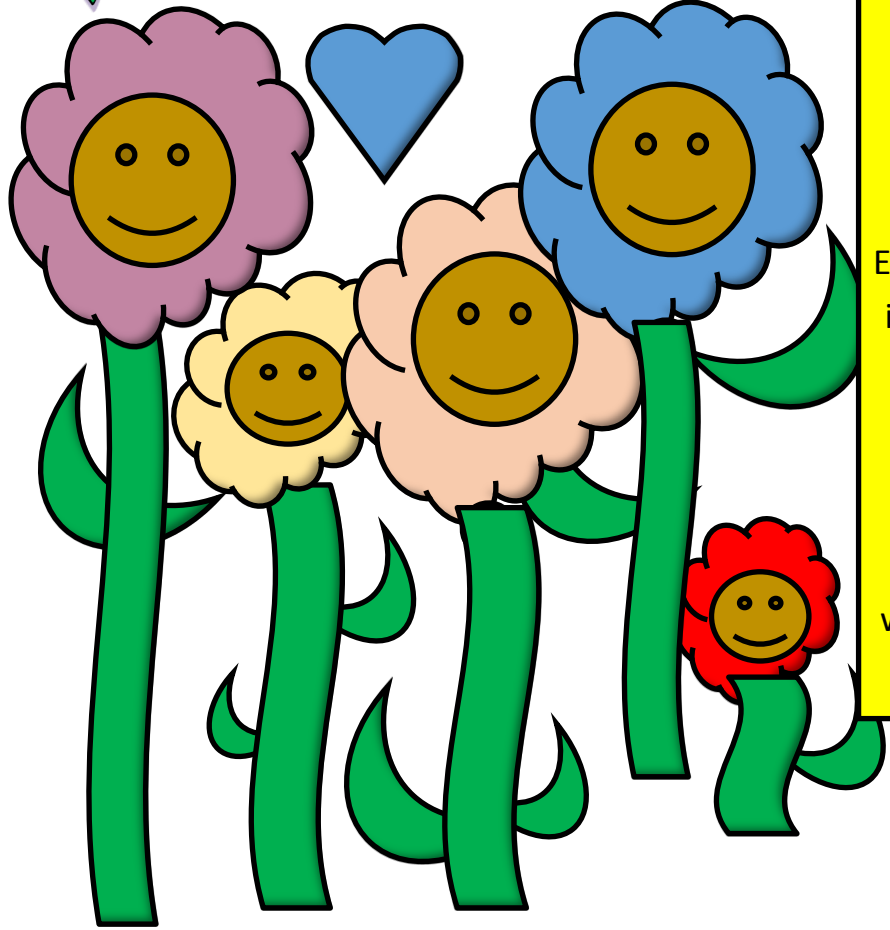
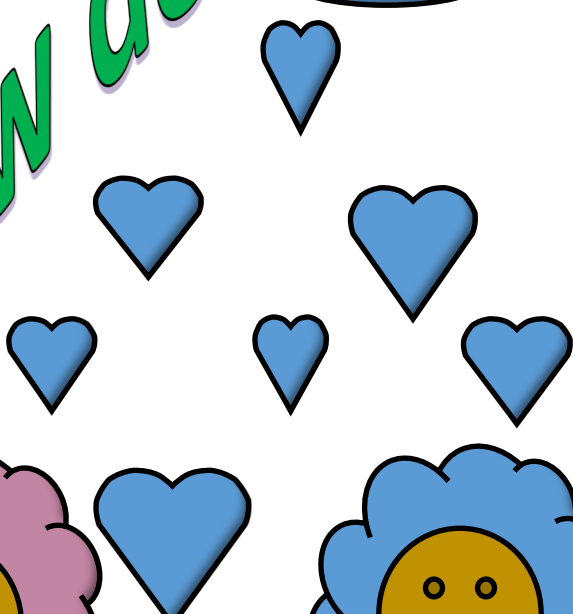
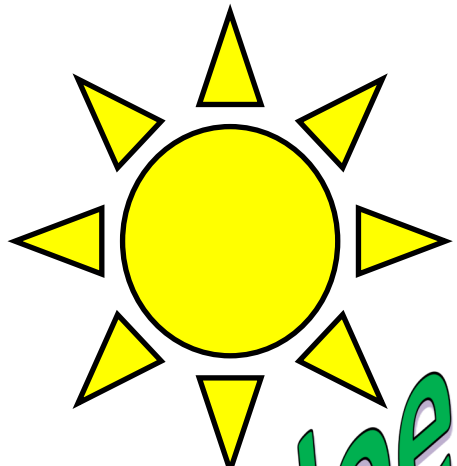


# How does a family bloom?



There are services that can help you create the best environment possible for your child and work with you to figure out what that looks like for your household.

Each program is a little bit different, but in general, services are free, voluntary and based on each family's needs.

On the back of this flyer is a list of agencies that are ready to get started when you are ready. Happy Parenting!

# Free Family Support Referrals

## NM Statewide: 1-800-691-9067

### Free Family Support Services in Valencia County

#### **CHI, St. Joseph's Children Home Based Health Education and Enhanced Referral Services Program:**

Call Marisol Aviles at 924-8006 to begin intake. For first-time parents (at least one). Services can begin prenatally through infants less than 2 mos. old and can continue until child is 3 yrs. old. Multi-lingual services provided regardless of income or documentation status.

#### **Parents as Teachers through UNM Center for Development and Disability**

Call Damaris Donado at 250-8881 to begin intake. Services can begin prenatally through child's entrance into kindergarten. Trained parent educators meet families in the home to develop goals and strategies toward healthy child development and resource referral. Multi-lingual services provided regardless of income or documentation status.

#### **Families First Program, Dept. of Health**

Call Anita Lozano at 222-0977 or 864-7743 opt. 5. This voluntary service is a Medicaid funded program that provides targeted case management by nurses to Medicaid eligible pregnant women and children 0-3 years old. Services can take place in the home, office or community setting. Bi-lingual provider.

### Free Early Intervention Services in Valencia County

#### **La Vida Felicidad**

Call 865-4651 to begin intake process. Early Intervention services are family-centered services delivered to eligible infants and toddlers birth-age 3 who have or are at risk for disabilities/developmental delays. Services include service coordination, special instruction with developmental specialists, nursing, occupational therapy, physical therapy, respite and speech-language therapy.

#### **NAPPR**

Call Sherise Yoe at 345-6289. Any ethnicity may be served and multi-lingual services available. Family-centered Early Intervention services are provided to infants and toddlers with delays or at risk for delays from birth-age 3.