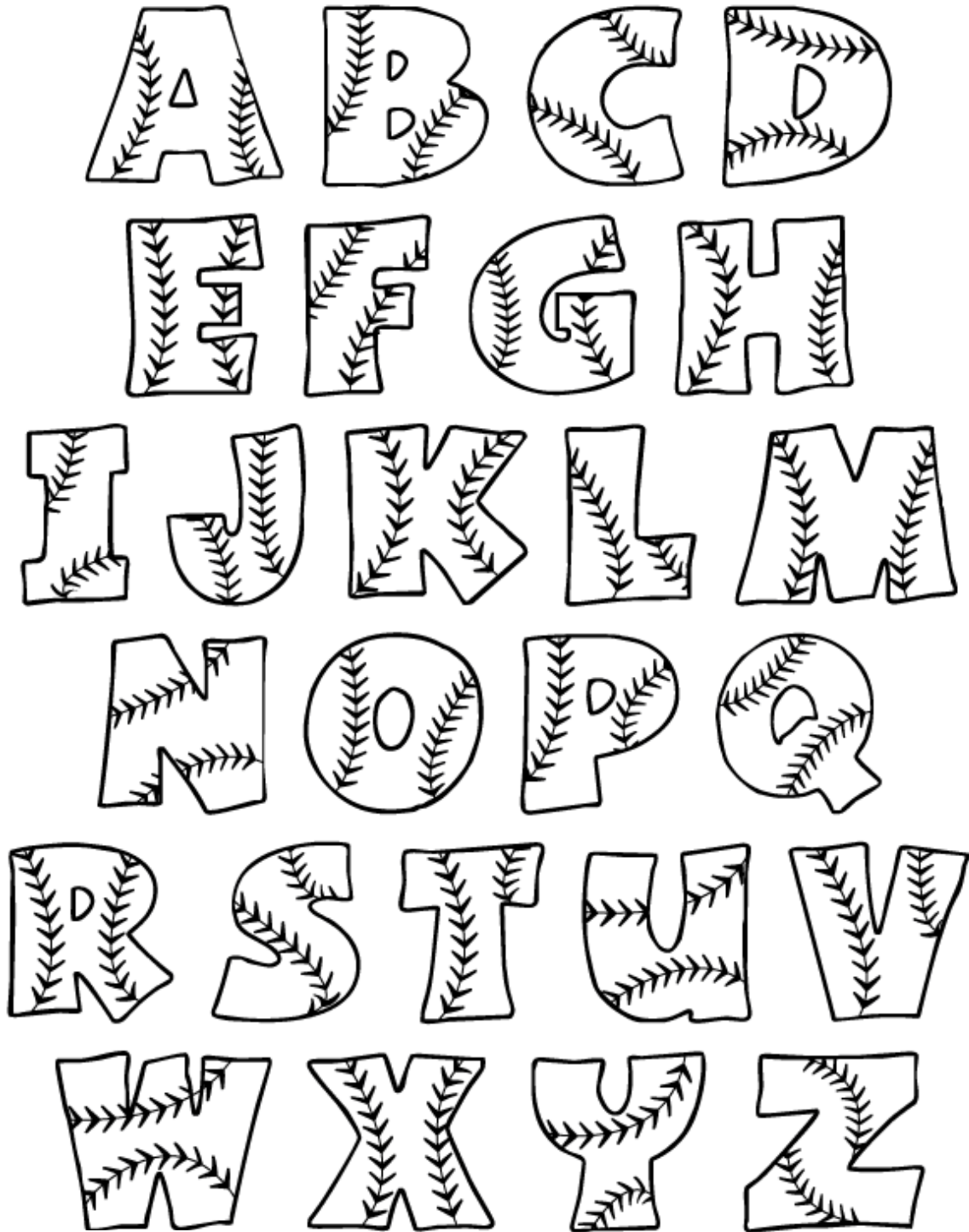


Coloring the Alphabet Vowel Sounds



A is grey

B, C, D & E are green

F is red

G is green

H is grey

I is white

J & K are grey

L, M & N are red

O is rose

P is green

Q is blue

R is brown

S is red

T is green

U is blue

V is green

W is blue

X is red

Y is white

Z is green (or red in British English)