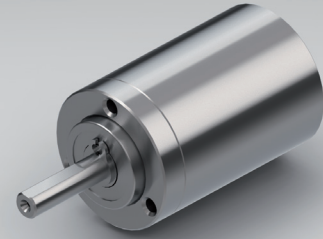


Standard scope of delivery Gearbox lubricated for duration of service life, dust-proof package, motor pinion and assembly instructions (adapter plate optional).

Customized versions also available for small quantities.

PLANETARY GEARBOX GPL016

stainless steel version



		1-STAGE	2-STAGE	3-STAGE	
Ratio i:1	Max. motor shaft-∅D	Ratio i:1	Max. motor shaft-∅D	Ratio i:1	
				36	5
				48	5
				64	3
				84	5
12	5	112	3		
3	5	16	3	147	5
4	3	21	5	196	3
7	1	28	3	343	1
Max. rated torque continuous		Nm	0.1	0.3	0.5
Max. efficiency at max. rated torque continuous		%	90	85	80
Average backlash at no load		arcmin ≤	20	35	50
Weight without adapter plate		g	20	25	30
Dimension L		mm	18.5	23.5	28.5
Dimension A		mm	3		
Dimension B		mm	7.2		
Max. radial load	FR	5 mm from shaft end	N	30	
Max. axial load	FA		N	10	
Max. continuous rated speed at drive		min ⁻¹	6000		
Max. intermittent rated speed at drive		min ⁻¹	10000		
Temperature range	Type Standard	°C	-30 / +90		
Temperature range	Type V	°C	-40 / +90		

Type V = heavy duty version

Changes reserved © GYSIN AG | 05/2015